



BIOLOGY

BOOKS - NTA MOCK TESTS

NEET MOCK TEST 07

Biology

1. Which one of the following statements is true regarding digestion and absorption of food in humans?

A. About 60 % of starch is hydrolysed by salivary amylase in our mouth.

B. Chylomicrons are small lipoprotein particles that are transported from the intestine into blood capillaries.

C. Fructose and amino acids are absorbed through intestinal mucosa with the help of carrier ions like Na^+ .

D. Oxyntic cells in our stomach secrete the proenzyme pepsinogen.

Answer: C



Watch Video Solution

2. The basic unit of study in ecology is:

A. Population

B. Organism

C. Community

D. Species

Answer: B



Watch Video Solution

3. Which option is incorrectly matched ?

- A. EcoRI - Production of sticky ends
- B. DNA ligase - Multiplication of DNA molecules
- C. ori - copy number
- D. Selectable marker - Identification of transformants

Answer: B



[Watch Video Solution](#)

4. Which of the following is the correct description of the mechanism of action of a combined pill ?

- A. These inhibit ovulation and implantation as well as alter the quality of cervical mucus to prevent the entry of sperms.
- B. These prevent the physical meeting of sperm and ovum.

C. These increase the phagocytosis of sperms within the uterus .

These also suppress sperm motility and the fertilizing capacity of sperms.

D. These prevent conception by blocking the entry of sperms through the cervix.

Answer: A



Watch Video Solution

5. In 1963, several varieties such as Sonalika and Kalyan Sona, which were high yielding and disease resistant, were variety of

A. Wheat

B. Bajra

C. Rice

D. All the above

Answer: A



Watch Video Solution

6. If the heartbeat of a person is about 75 beats per minute, and stroke volume is 70 mL per minute, then the cardiac output will be

- A. 5000 mL
- B. 5250 mL
- C. 5500 mL
- D. 5150 mL

Answer: B



Watch Video Solution

7. In Amoeba the ____ (i) ____ vacuole is important for osmoregulation and excretion. In many cells, as in protists, _____ (ii) _____ vacuoles are

formed by engulfing the particles.

- A. (i) food, (ii) contractile
- B. (i) osmoregulatory, (ii) contractile
- C. (i) food, (ii) osmoregulatory
- D. (i) contractile, (ii) food

Answer: D



Watch Video Solution

8. Match the following column I with column II and choose the option with the accurate matches.

	Column I		Column II
(a)	Operator site	(i)	The binding site for RNA polymerase
(b)	Promoter site	(ii)	The binding site for repressor molecule
(c)	Regulator gene	(iii)	Codes for protein/enzyme
(d)	Structural gene	(iv)	Codes for repressor molecule

- A. *a b c d*
(ii) (i) (iii) (iv)
- B. *a b c d*
(ii) (i) (iv) (iii)
- C. *a b c d*
(iv) (iii) (i) (ii)
- D. *a b c d*
(ii) (iii) (i) (iv)

Answer: B



Watch Video Solution

9. Baculoviruses are pathogens that attack

- A. Insects
- B. Arthropods
- C. Aphids
- D. Both (a) and (b)

Answer: D

 [Watch Video Solution](#)

10. Which one of the following statements is incorrect for the interphase stage?

- A. Period of great metabolic activity
- B. Also called as preparatory phase
- C. Absence of replication of DNA
- D. It covers over 95% of the total duration of cell cycle

Answer: C

 [Watch Video Solution](#)

11. The common molecule between the Krebs cycle and C_4 pathway is

- A. Phosphoenolpyruvate
- B. Ribulose 1, 5-diphosphate
- C. Oxalo-acetic acid
- D. Phosphoglyceric acid

Answer: C

 [Watch Video Solution](#)

12. What are flocs?

- A. Masses of fungi with root of higher plants
- B. Association of fungi with algae
- C. Masses of bacteria with fungi

D. Masses of bacteria with leguminous plants

Answer: C

 [Watch Video Solution](#)

13. Which of the following is correct with respect to Euro-III norms?

- A. Sulphur to be controlled at 150 ppm in diesel and 350 ppm in petrol.
- B. Aromatic hydrocarbons are to be contained at 42% of the concerned fuel.
- C. The goal, according to the roadmap, is to reduce sulphur to 150 ppm in petrol and 50 ppm in diesel.
- D. All of these

Answer: B

 [Watch Video Solution](#)

14. Which of the following is/are example(s) of passive immunity?

- A. Antibodies present in colostrum
- B. Antibodies received by foetus through placenta
- C. Antibodies against the snake venom injected in patients
- D. All of these

Answer: D



[Watch Video Solution](#)

15. The deficiencies of micronutrients not only affects growth of plants, but also vital functions such as photosynthetic and mitochondrial electron flow. Among the list given below, which group of three elements shall affect the most, both photosynthetic and mitochondrial electron transport ?

A. Cu, Mn, and Fe

B. Co, Ni, and Mo

C. Mn, Co, and Ca

D. Ca, K, and Na

Answer: A



[Watch Video Solution](#)

16. A vein possesses a larger lumen because

A. Tunica media and tunica externa form a single coat

B. Tunica interna and tunica media form a single coat

C. Tunica interna, tunica media and tunica externa are thin

D. Tunica media is a thin coat

Answer: D



[Watch Video Solution](#)

17. Osteoporosis, an age related disease of skeletal system, may occur due to

- A. Immune disorder affecting neuromuscular junction leading to fatigue
- B. High concentration of Ca^{++} and Na^{+}
- C. Decreased level of estrogen
- D. Accumulation of uric acid leading to inflammation of joints

Answer: C



[Watch Video Solution](#)

18. The most widely accepted theory for ascent of sap in trees is

- A. Capillarity
- B. Role of atmospheric pressure

C. Pulsating action of living cell

D. Cohesion-tension-transpiration pull model

Answer: D



Watch Video Solution

19. Which of the following statements is true?

A. Spores are always diploid.

B. Spores and gametes are diploid.

C. Gametes are always haploid.

D. Spores are gametes.

Answer: C



Watch Video Solution

20. Which is/are correct statement/s?

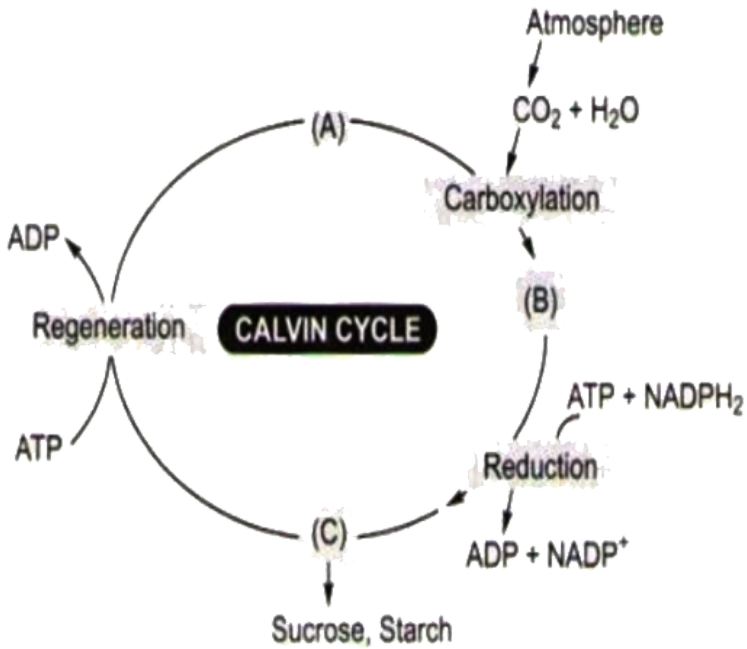
- A. In flowering plants, tracheids and vessels are the main water transporting elements.
- B. In gymnosperms, tracheids are the chief water transporting elements
- C. The companion cells play an important role in the maintenance of a pressure gradient in the sieve tubes
- D. All of these

Answer: D



[Watch Video Solution](#)

21. Choose the correct combination of labels for the molecules involved in Calvin cycle.



- A. A-RuBP, B-Triose phosphate, C-PGA
- B. A-PGA, B-RuBP, C-Triose phosphate
- C. A-PGA, B-Triose phosphate, C-RuBP
- D. A-RuBP, B-PGA, C-Triose phosphate

Answer: D

[Watch Video Solution](#)

22. There are various types of reproduction. The type of reproduction adopted by an organism depends on

- A. The habitat and morphology of the organism
- B. Morphology of the organism
- C. Morphology and physiology of the organism
- D. The organism's habitat, physiology and genetic makeup

Answer: D



[Watch Video Solution](#)

23. Select the option that is correct with respect to Trypanosoma.

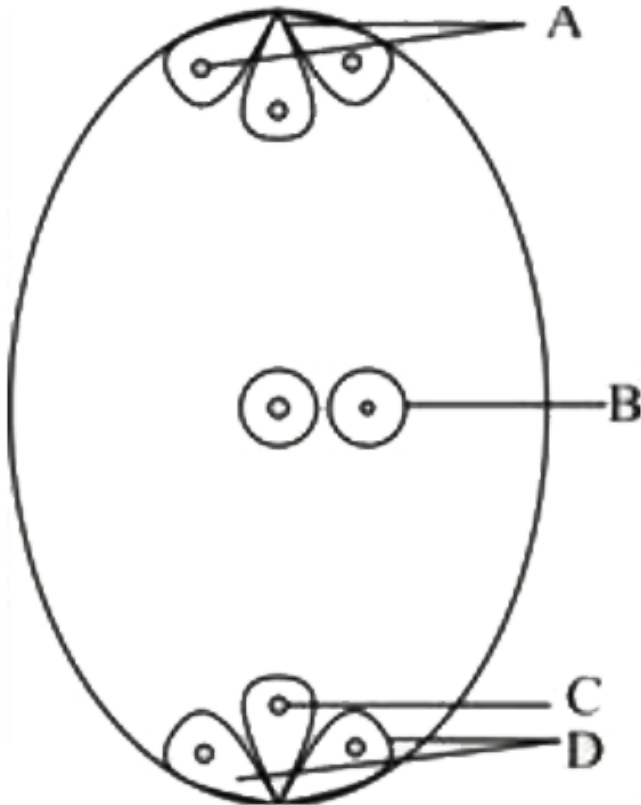
- A. They are flagellated protozoans.
- B. They are parasites.
- C. They cause sleeping sickness.
- D. All of the above

Answer: D

 Watch Video Solution

24. Given below is the diagram of the embryo sac with certain labels (A-D).

Select the option that correctly identifies the labels.



A. A - Three antipodal cells.

B - Two polar nuclei

C - Two synergid

D - Egg cell

B. A - Three antipodal cells.

B - Two polar nuclei

C - Egg cell

D - Two synergid

C. A - Two antipodal cells.

B - Three polar nuclei

C - Two synergid

D - Egg cell

D. None of these

Answer: B



Watch Video Solution

25. Select the correct statement regarding post-transcriptional modification.

- A. In capping, methyl guanosine triphosphate is added at the 3' end.
- B. In tailing, adenylate residues (200- 300) are added at 3'-end in a template- dependent manner.
- C. It is a process of conversion of mRNA to hnRNA.
- D. It involves removal of introns and joining of exons.

Answer: D



Watch Video Solution

26. When food energy passes from herbivores to carnivores,

- A. Some energy is increased
- B. Some energy is decreased

C. Energy remain unchanged

D. Not relevant.

Answer: B



Watch Video Solution

27. Select the incorrect statement.

- A. The countercurrent mechanism changes the isotonic glomerular filtrate into hypertonic urine by increasing salt concentration around the nephron and collecting tubule.
- B. The wall of collecting tubule is permeable to water whereas, ascending limb is impermeable to water.
- C. The absorption of water in DCT is facultative.
- D. As the filtrate passes through the ascending limb, sodium is transported passively in the ascending thick segment.

Answer: D



[Watch Video Solution](#)

28. In an organism, enzymes generally have

- A. Same pH and temperature optima
- B. Same pH but different temperature optima
- C. Different pH but same temperature optima
- D. Different pH and different temperature optima

Answer: C



[Watch Video Solution](#)

29. The statements gives below describe certain features that are observed in the pistil of flowers.

- i. Pistil may have many carpels .

ii. Each carpel may have more than one ovule.

iii. Each carpel has only one ovule.

iv. Pistil have only one carpel

Choose the correct answer from the options given below:

A. i and ii

B. iii and ii

C. ii and iv

D. iii and iv

Answer: A



Watch Video Solution

30. Read the following statements for lac operon:

i. Each operon has its specific operator and specific repressor.

ii. The y gene codes permease, which increases the permeability of the cell to beta-galactosides.

iii. Regulation of lac operon can be visualized as regulation of enzyme

synthesis by its substrate.

Select the option with the correct statements.

- A. All statements are correct.
- B. All statements are incorrect.
- C. Only i is correct and ii & iii are incorrect.
- D. Only i & ii are correct

Answer: A



Watch Video Solution

31. Which type of population interaction is found between clown fish and sea anemone?

- A. Brood parasitism
- B. Parasitism
- C. Mutualism

D. Commensalism

Answer: D



[Watch Video Solution](#)

32. In vertebrates, the notochord is modified into

- A. Vertebral column
- B. Centrum of vertebrae
- C. Body of vertebrae
- D. Transverse process of vertebrae

Answer: A



[Watch Video Solution](#)

33. The hormone released during post-ovulatory phase helps in

- A. Maintenance of pregnancy
- B. Development of secondary sexual characters
- C. Ovulation
- D. Increase in production of FSH and LH

Answer: A

 [Watch Video Solution](#)

34. In mung bean, resistance to yellow mosaic virus and powdery mildew were induced by

- A. Biofortification
- B. Hybrid breeding
- C. Mutation breeding
- D. Conventional breeding

Answer: B

35. Given below is an incomplete table about certain hormones, their source glands and one major effect on each one the body in humans.

Identify the correct option for the three blanks A, B and C

Glands	Secretion	Effect on body
A	Oestrogen	Maintenance of secondary sexual character
Alpha cells of Islets of Langerhans	B	Raises blood sugar level
Anterior pituitary	C	Over secretion leads to gigantism

- A. A-Ovary, B-Glucagon, C-Growth hormone
- B. A-Placenta, B-Insulin, C-Vasopressin
- C. A-Ovary, B-Insulin, C-Calcitonin
- D. A-Placenta, B-Glucagon, C- Calcitonin

Answer: A

36. One set of a plant was grown at 12 hours day and 12 hours night period cycles and it flowered while in the other set night phase was interrupted by flash of light and it did not produce flower. Under which one of the following categories will you place this plant?

- A. Long-day
- B. Darkness neutral
- C. Day neutral
- D. Short-day

Answer: D



Watch Video Solution

37. What is correct regarding ecological succession?

- A. The decrease in biodiversity at each transitional level.

- B. Primary succession is faster than secondary succession.
- C. Change of environmental condition from extreme to mesic.
- D. The climax community is most stable with the environment as the niche and food web complexity is less.

Answer: C

 [Watch Video Solution](#)

38. A taxon which is facing an extremely high risk of extinction in the wild in immediate future is known as

- A. Exotic
- B. Vulnerable
- C. Endangered
- D. Critically endangered

Answer: D

 [Watch Video Solution](#)

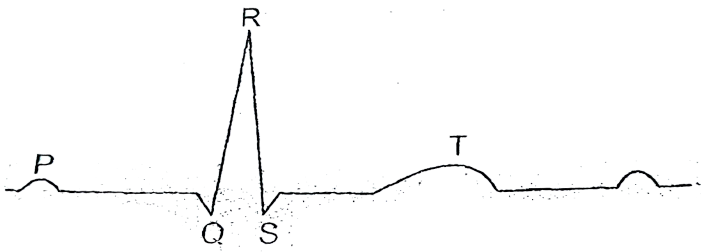
39. One of the important consequences of geographical isolation is

- A. Preventing speciation
- B. Speciation through reproductive isolation
- C. Random creation of new species
- D. No change in the isolated fauna

Answer: B

 [Watch Video Solution](#)

40. Given below is the ECG of a normal human. Which of its components is correctly interpreted below ?



- A. Peak P - Initiation of left atrial contraction only.
- B. Peak T - Initiation of total cardiac contraction.
- C. Peak P and peak R together - Systolic and diastolic blood pressure.
- D. Complex QRS - One complete pulse.

Answer: D

[▶ Watch Video Solution](#)

41. Which one of the following is categorised as a parasite in true sense

- A. The female Anopheles bites and sucks blood from humans.
- B. Human foetus developing inside the uterus draws nourishment from the mother.

C. Head louse living on the human scalp as well as laying eggs on human hair

D. The cuckoo (koel) lays its eggs crow's nest.

Answer: C

 [Watch Video Solution](#)

42. Many freshwater animals cannot live for long in sea water and vice versa mainly because of the:

A. Change in nitrogen levels

B. Change in the levels of thermal tolerance

C. Variations in light intensity

D. Osmotic problems

Answer: D

 [Watch Video Solution](#)

43. Which of the following is the most abundant protein in animals?

- A. Haemoglobin
- B. Keratin
- C. RuBisCO
- D. Collagen

Answer: D



[Watch Video Solution](#)

44. Select the incorrect statement.

- A. Every 100 ml of deoxygenated blood, delivers approximately 4 ml of CO_2 to the alveoli.
- B. Carbonic anhydrase is present in very high concentration in RBC.
- C. High pCO_2 and low pO_2 in tissue help in binding of carbon dioxide.

D. CO_2 is carried in haemoglobin as carboxyhemoglobin.

Answer: D



[Watch Video Solution](#)

45. During the resting state of the neural membrane, if diffusion occurs due to concentration gradients, it would drive

- A. K^+ into the cell
- B. K^+ and Na^+ out of the cell
- C. Na^+ into the cell
- D. Na^+ out of the cell

Answer: C



[Watch Video Solution](#)

46. Cold - blooded animals fall under the category of

- A. Ectotherms
- B. Psychrotherms
- C. Endotherms
- D. Thermophiles

Answer: A



[Watch Video Solution](#)

47. In the F_2 generation, genotypic and phenotypic ratios are identical in case of

- A. Complementary genes
- B. Mendelian dihybrids
- C. Mendelian monohybrids
- D. Incomplete dominance

Answer: D



Watch Video Solution

48. Which of the following is a macronutrient?

A. Molybdenum

B. Calcium

C. Zinc

D. Manganese

Answer: B



Watch Video Solution

49. Which of the following is correct with respect to tools of RDT?

- A. Presence of more than one recognition site for one enzyme, within a vector, generate several fragments, which will complicate gene cloning.
- B. Ligation of alien DNA is carried out at a restriction site present in 'Ori' .
- C. In pBR322, two antibiotic resistance gene helps in selection of transformants, whereas the other helps in cloning.
- D. Rop codes for proteins involved in ligation of foreign DNA.

Answer: A



[Watch Video Solution](#)

50. Which one of the following systems is commonly used in alcoholic fermentation?

A. Bacterial system

B. Algal system

C. Fungal system

D. Viral system

Answer: C



Watch Video Solution

51. The movement of mineral ions into plant root cells as a result of diffusion is called

A. Osmosis

B. Active absorption

C. Passive absorption

D. Endocytosis

Answer: C



Watch Video Solution

52. In which one of the following, do both the names refer to the same thing?

- A. Tricarboxylic acid cycle and urea cycle
- B. Krebs cycle and Calvin cycle
- C. Tricarboxylic acid cycle and citric acid cycle
- D. Citric acid cycle and Calvin cycle

Answer: C



Watch Video Solution

53. A small protein that is attached to the outer surface of the inner membrane of mitochondria and acts as a mobile carrier for electron transfer in oxidative phosphorylation is

- A. Ubiquinone that receives electron from complex I only

B. Cytochrome c_1 between complex III and complex IV

C. Cytochrome c between complex III and complex IV

D. Plastocyanin

Answer: C



[Watch Video Solution](#)

54. Find the odd one out, with respect to Chargaff's rule.

A. $A + T = C + G$

B. $A + G = C + T$

C. $\frac{A + G}{C + T} = 1$

D. Base ratio A/T is close to unity and C/G is also close to unity

Answer: A



[Watch Video Solution](#)

55. Maximum trapping of solar energy is observed in,

- A. Planting trees
- B. Cultivating crops
- C. Growing algae in tanks
- D. Growing grasses

Answer: C



Watch Video Solution

56. Homeothermy is found in

- A. Rat
- B. Fish
- C. Frog
- D. Lizard

Answer: A



Watch Video Solution

57. Which of the following disease is called kusht rog ?

A. Whooping cough

B. Plague

C. Diphtheria

D. Leprosy

Answer: D



Watch Video Solution

58. Which of the following feature of halophiles, is used to differentiate them from eubacteria?

- A. Having different cell wall and cell membrane structure.
- B. Their survival in extreme conditions.
- C. They belong to archaebacteria.
- D. All are correct.

Answer: D

 [Watch Video Solution](#)

59. Which of the following factors regulate human life with reference to population density ?

- A. Availability of food, housing and health facilities
- B. Urbanisation
- C. Climatic conditions
- D. All the above

Answer: D

 [Watch Video Solution](#)

60. Which of the following is correct regarding the separation of DNA fragments during gel electrophoresis?

- A. Smallest fragment will move to the farthest point towards cathode.
- B. Smallest fragment will move to the farthest point towards anode.
- C. Largest fragment will move to the farthest point towards anode.
- D. Largest fragment will move to the farthest point towards cathode.

Answer: B

 [Watch Video Solution](#)

61. Endosperm is consumed by developing embryo in the seed of

- A. Pea
- B. Maize

C. Coconut

D. Castor

Answer: A



Watch Video Solution

62. In a cell, the number of chromosomes is the same, but the amount of DNA content has changed from C to 2C. Also, the amount of histones in the cell becomes double. In which stage of the cell cycle, this process could have happened?

A. G_1 phase

B. S phase

C. G_2 phase

D. G_0 phase

Answer: B



Watch Video Solution

63. Which of the following statement is correct?

- A. Extensive use of chemical fertilizers may lead to eutrophication of nearby water bodies
- B. Both Azotobacter and Rhizobium fix atmospheric nitrogen in root nodules of plants
- C. Cyanobacteria such as Anabaena and Nostoc are important mobilizers of phosphates and potassium for plant nutrition in the soil.
- D. At present, it is not possible to grow maize without chemical fertilizers.

Answer: A



Watch Video Solution

64. Erythroblastosis foetalis can be seen in marriage between

- A. $Rh - ve$ male and $Rh + ve$ female
- B. $Rh + ve$ male and $Rh - ve$ female
- C. $Rh - ve$ male and $Rh - ve$ female
- D. $Rh + ve$ male and $Rh + ve$ female

Answer: B



Watch Video Solution

65. The situation where indigenous knowledge of nature, originating with indigenous people, is used by others for profit, without taking proper permission from them and with little or no compensation or recognition to the indigenous people themselves is known as

- A. Biopatents
- B. Biopiracy

C. Biological diversity

D. Ethical issues

Answer: B



Watch Video Solution

66. The region of chromatin that is stained lightly is

A. Heterochromatin

B. Transcriptionally inactive region

C. Centromere

D. Transcriptionally active region

Answer: D



Watch Video Solution

67. Select the correct option regarding respiratory volumes.

A. Total capacity of lungs = Vital capacity + Tidal air

B. Vital capacity of lungs = Total lung capacity – Residual air

C. Vital capacity of lungs = Tidal air + Complemental air

D.

Total capacity of lungs = Tidal air + Complemental air + Supp

Answer: B



[Watch Video Solution](#)

68. In photosynthesis, the light-independent reactions take place in

A. Photosystem I

B. Photosystem II

C. Stromal matrix

D. Both (A) and (B)

Answer: C



Watch Video Solution

69. In microsporangium, cells of which layer have more than one nucleus?

A. Epidermis

B. Tapetum

C. Middle layers

D. Endothecium

Answer: B



Watch Video Solution

70. If a female has a rudimentary ovary but can provide a suitable environment for the growth of the foetus, the ART technique that can be used is

- A. IVF-ET
- B. Artificial insemination
- C. GIFT
- D. ICSI

Answer: C



[Watch Video Solution](#)

71. Which of the following is correct about association areas of brain?

- A. They are large regions that are neither clearly sensory nor motor in function.
- B. They are responsible for communication and memory.

C. They control several emotional reactions.

D. Both (A) and (B)

Answer: B

 [Watch Video Solution](#)

72. Which of the following option explains the correct function of cortisol

?

A. Reabsorption of Na^+ and water and excretion of K^+ and phosphate ions.

B. To produce anti-inflammatory reactions

C. To carry out glycolysis, lipogenesis, and proteolysis.

D. To increase cellular uptake and utilization of amino acids.

Answer: B

 [Watch Video Solution](#)

73. In which class of fungi, asexual spores are produced exogenously, while sexual spores are produced endogenously?

- A. Deuteromycetes
- B. Ascomycetes
- C. Phycomycetes
- D. Basidiomycetes

Answer: B



Watch Video Solution

74. In a prokaryotic cell, mesosomes function in

- A. DNA replication and distribution to daughter cells.
- B. Formation of cell wall, increase the surface area of the plasma membrane and enzymatic content.

C. Respiration and secretion processes.

D. All of these

Answer: D



Watch Video Solution

75. In Spirogyra, meiosis occurs during

A. Vegetative reproduction

B. Zoospore formation

C. Zygosporangium formation

D. Gamete formation

Answer: C



Watch Video Solution

76. Amnion helps in

- A. Exchange of gases and respiration in the foetus
- B. Excretion of waste material produced by the foetus
- C. Provide nourishment to the foetus
- D. Protection of the foetus from mechanical shock

Answer: D



[Watch Video Solution](#)

77. In stems, the protoxylem lies towards the centre (pith) and the metaxylem lies towards the periphery of the organ. This type of primary xylem is called

- A. Exarch
- B. Endarch
- C. Both (A) and (B)

D. None of these

Answer: B



Watch Video Solution

78. Which of the following correctly characterizes the plant body of Funaria?

- A. Predominantly gametophyte with dependent sporophyte
- B. Completely gametophyte
- C. Predominantly sporophyte with dependent gametophyte
- D. Completely sporophyte

Answer: A



Watch Video Solution

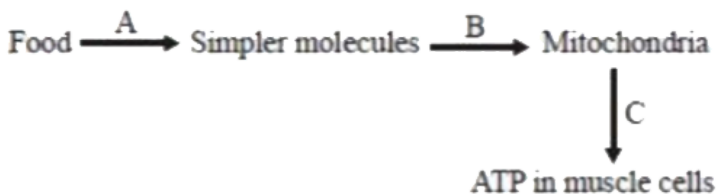
79. Plants can be cultivated in soil less medium where all required nutrients are supplied from the outside in water solution, this method comes under

- A. Aeroponics
- B. Hydroponics
- C. Hybrid culture
- D. Critical culture media

Answer: B

 [Watch Video Solution](#)

80. The correct sequence of processes represented by A, B, and C are:-



A. Diffusion → Synthesis → Active transport

B. Digestion → Excretion → Cellular respiration

C. Synthesis → Active transport → Excretion

D. Digestion → Diffusion → Cellular respiration

Answer: D

 [Watch Video Solution](#)

81. Identify the correct sequence through which the inhaled air moves?

A. Trachea - lungs - larynx - pharynx- alveoli

B. Nose - larynx - pharynx - bronchus - alveoli - bronchioles

C. Nostrils - pharynx - larynx - trachea - bronchi - bronchioles - alveoli

D. Nose - mouth - lungs

Answer: C

 [Watch Video Solution](#)

82. Which of the following features is not present in the phylum Arthropoda

- A. Chitinous exoskeleton
- B. Metameric segmentation
- C. Parapodia
- D. Jointed appendages

Answer: C



Watch Video Solution

83. Cytochromes are found in

- A. Matrix of mitochondria
- B. Outer wall of mitochondria
- C. Cristae of mitochondria

D. Lysosomes

Answer: C



Watch Video Solution

84. Path of water movement from soil to exarch xylem is

A. Soil → root hair → cortex → pericycle → endodermis →

metaxylem → protoxylem

B. Soil → root hair → cortex → endodermis → pericycle →

protoxylem → metaxylem

C. Soil → root hair → epidermis → endodermis → phloem →

xylem

D. Soil → root hair → epidermis → cortex → phloem →

xylem

Answer: B



[Watch Video Solution](#)

85. Which of the following is incorrectly paired?

- A. Homo sapiens - Mammalia
- B. Musca domestica- Insecta
- C. Triticum aestivum - Dicotyledonae
- D. Mangifera indica - Dicotyledonae

Answer: C



[Watch Video Solution](#)

86. Which of the following technique is not required for DNA fingerprinting?

- A. Polymerase chain reaction
- B. ELISA

C. Restriction enzymes

D. DNA - DNA hybridization

Answer: B



[Watch Video Solution](#)

87. Transgenic plants are the one that are

A. Generated by introducing foreign DNA into a cell and regenerating a plant from that cell.

B. Produced after protoplast fusion in artificial medium.

C. Grown in artificial medium after hybridization in the field

D. Produced by a somatic embryo in artificial medium.

Answer: A



[Watch Video Solution](#)

88. Which of the following flowers is unisexual ?

- A. Cucumber
- B. China rose
- C. Onion
- D. Pea

Answer: A



[Watch Video Solution](#)

89. The process of development of more than one embryo in seeds of citrus fruits is called

- A. Apospory
- B. Polyembryony
- C. Apogamy
- D. Vegetative reproduction

Answer: B



Watch Video Solution

90. Pneumatophores are seen in

A. Sweet potato

B. Turnip

C. Rhizophora

D. Carrot

Answer: C



Watch Video Solution