



BIOLOGY

BOOKS - NTA MOCK TESTS

NEET MOCK TEST 10

Biology

1. _____ is used to speed up the malting process in the brewing industry.

A. GA_1

B. GA_2

C. GA_3

D. GA_4

Answer: C



Watch Video Solution

2. Identify the following statements as true (T) or false (F) for genetic diversity and select the correct option :

(A) Genetic diversity is a diversity shown by a single species at genetic level

(B) It is total genetic information contained in all individuals of a community.

(C) *Rauwolfia vomitoria* shows the variation in the term of concentration of active chemical reserpine.

(D) India has more than 50000 genetically different strains of mango.

A. (A-T), (B-T) , (C -F) , (D - F)

B. (A - T) , (B - F) , (C -T) , (D - F)

C. (A-F), (B-F), (C-T), (D-T)

D. (A-F), (B-F), (C-T), (D-T)

Answer: B

 [Watch Video Solution](#)

3. In flowering plants, meiosis takes place during

A. Seed germination

B. Bud formation

C. Formation of pollen grains

D. Formation of root tip

Answer: C

 [Watch Video Solution](#)

4. C_2 cycle is studied in

- A. C_4 plants
- B. Those showing photorespiration
- C. Both C_4 plants and those showing photorespiration
- D. None of the above

Answer: B



[Watch Video Solution](#)

5. Which of the following statement is correctly paired?

- A. Zn^{2+} -It is an activator of nitrogenase during nitrogen fixation.
- B. Mo- Activator of alcohol dehydrogenase

C. Mg^{2+} - Activator of phosphoenol pyruvate carboxylase

D. Cu- Activator of RuBisCo

Answer: C

 [Watch Video Solution](#)

6. The back flow of faecal matter in the large intestine is prevented by the presence of

A. Sphincter of Oddi

B. Ileo-caecal valve

C. Gastric-oesophageal sphincter

D. pyloric sphincter

Answer: B

 [Watch Video Solution](#)

7. Which of the following is correct with respect to the sperms of fertile males ?

- A. At least 40 % of sperms must have a normal shape and size
- B. At least 60% of sperms must have motility
- C. At least 60% of sperms must have a normal shape and size.
- D. Both (A) and (B)

Answer: C



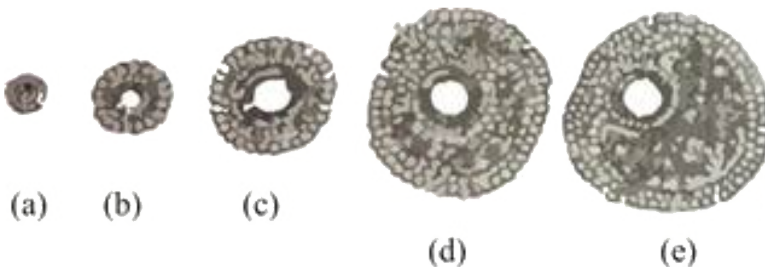
8. Which of the following statement /s is / are correct for aerobic muscles ?

- A. Such muscle contains red coloured oxygen storing pigment called myoglobin.
- B. Such muscles contain a large number of mitochondria
- C. They are also called red fibres
- D. All of these

Answer: D

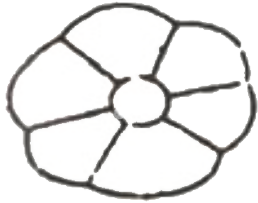
 [Watch Video Solution](#)

9. The following is the illustration of the sequence of ovarian events "a" to "l" in a human female :





(f)



(g)



(h)



(l)

Identify developing follicle, mature follicles and corpus luteum.

A. (a) to (d) - mature follicle , (e) to (f) developing follicle , (g) - (l) corpus luteum

B. (a) to (d) - developing follicle ,(e) to (f) mature follicle, (g) - (l) corpus luteum

C. (a) to (d) - corpus luteum (e) to (f) mature follicle , (g) - (l) developing follicle

D. None of these

Answer: B

 [Watch Video Solution](#)

10. In the electron transport system present in the inner mitochondrial membrane, complexes I and IV are respectively

- A. NADH dehydrogenase and $FADH_2$
- B. $NADH_2$ and NADH dehydrogenase
- C. NADH dehydrogenase and cytochrome-c oxidase complex
- D. NADH dehydrogenase and ATP synthase

Answer: C

 [Watch Video Solution](#)

11. Which of the following is known as living fossil

- A. Locusta
- B. Dentalium
- C. Limulus
- D. Ascidia

Answer:



[Watch Video Solution](#)

12. Which of the following is a common characteristic between earthworm, leech, and a centipede ?

- A. They have Malpighian tubules
- B. They are hermaphrodite

C. They have a ventral nerve cord

D. They have no legs

Answer: C

 [Watch Video Solution](#)

13. Emergency contraceptives are effective if used within

A. 72 hrs of coitus

B. 72 hrs of ovulation

C. 72 hrs of menstruation

D. 72 hrs of implantation

Answer: A

 [Watch Video Solution](#)

14. Chronic disorder in which alveolar walls are damaged is

- A. Asthma
- B. Emphysema
- C. Occupational respiratory disorders
- D. Pneumonia

Answer: B



[Watch Video Solution](#)

15. The main function of phloem is translocation of

- A. Water
- B. Mineral
- C. Air

D. Food

Answer: D

 [Watch Video Solution](#)

16. BOD is

- A. Directly proportional to the amount of organic waste.
- B. Directly proportional to the amount of DO
- C. Inversely proportional to the amount of DO.
- D. Both (A) and (C)

Answer: D

 [Watch Video Solution](#)

17. A transgenic food crop which may help in solving the problem of night blindness in developing countries is

- A. Flavr Savr tomatoes
- B. Starlink maize
- C. Bt Soybean
- D. Golden rice

Answer: D

 [Watch Video Solution](#)

18. A plant cell that has the potential to develop into a full plant is called

- A. Totipotency
- B. Unipotency

C. Multipotency

D. Regeneration

Answer: A

 [Watch Video Solution](#)

19. Generative cell was destroyed by laser but a normal pollen tube was still formed because

A. Vegetative cell is not damaged

B. Laser beam stimulates growth of pollen tube

C. Contents of killed generative cell stimulate pollen growth

D. None of the above

Answer: A

 [Watch Video Solution](#)

 Watch Video Solution

20. The frequency of recessive allele in a population is 0.2. The number of heterozygotes in a population of 500 is

- A. 150
- B. 240
- C. 160
- D. 64

Answer: C



Watch Video Solution

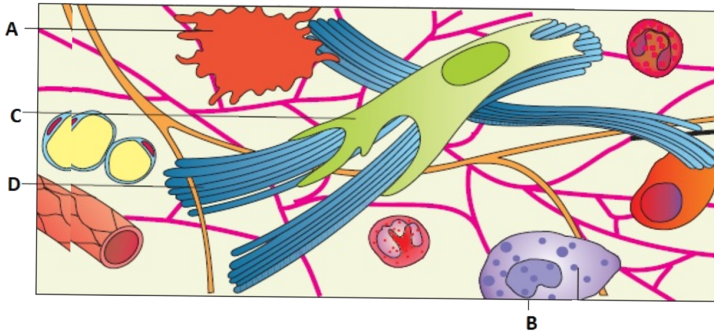
21. What is correct about self-incompatibility ?

- A. It is due to the non-synchronization of pollen release and stigma receptivity
- B. It is a genetic mechanism
- C. It is seen only in unisexual flowers.
- D. It is due to the placement of anther and stigma at different positions.

Answer: B

 [Watch Video Solution](#)

22. In the given diagram of areolar connective tissue, identify parts labeled A-D.



A.

<i>A</i>	<i>B</i>	<i>C</i>	<i>D</i>
Mast cell	Macrophage	Fibroblast	Collagen fibres

B.

<i>A</i>	<i>B</i>	<i>C</i>	<i>D</i>
Macrophage	Mast cell	Fibroblast	Collagen fibres

C.

<i>A</i>	<i>B</i>	<i>C</i>	<i>D</i>
Macrophage	Mast cell	Collagen fibres	Fibroblast

D.

<i>A</i>	<i>B</i>	<i>C</i>	<i>D</i>
Mast cell	Macrophage	Collagen fibres	Fibroblast

Answer: B



[Watch Video Solution](#)

23. What is true about ribosomes

- A. The prokaryotic ribosomes are 80S, where "S" stands for sedimentation differentiation.
- B. These are composed of ribonucleic acid and proteins.
- C. These are found only in eukaryotic cells.
- D. These are self-splicing introns of some RNAs

Answer: B



[Watch Video Solution](#)

24. Which of the following is the Pribnow box?

A. 5'TATAAT 3'

B. 5' TAATTA 3'

C. 5' AATAAT 3'

D. 5' ATATTA 3'

Answer: A



[Watch Video Solution](#)

25. Every 100ml deoxygenated blood delivers around _____ CO_2 to alveoli : —

A. 20 ml

B. 4 ml

C. 5 ml

D. 25 ml

Answer: B

 [Watch Video Solution](#)

26. Choose the correct statement.

- A. Vasa recta is well developed in cortical nephrons
- B. The PCT and DCT are situated in the medulla of the kidney
- C. The glomerulus enclosed the Bowman's capsule
- D. The ascending limb of the Henle's loop extends as the DCT

Answer: D

 [Watch Video Solution](#)

27. The chemical released by *Penicillium notatum* inhibited the growth of which microbe?

- A. *Clostridium*
- B. *Streptomyces*
- C. *Staphylococci*
- D. *Saccharomyces*

Answer: C

 [Watch Video Solution](#)

28. For bacterial cell which divides in every 1 minute, it takes one hour to fill up a cup. How much time will be taken to fill half the cup?

A. 59 minutes

B. 30 minutes

C. 60minutes

D. 20 minutes

Answer: A



Watch Video Solution

29. The breeding of the unrelated animals, which may be between individuals of the same breed but having no common ancestors for 4-6 generations is called

A. Inbreeding

B. Cross-breeding

C. Out-crossing

D. Inter-specific hybridization

Answer: C

 [Watch Video Solution](#)

30. Flowers are zygomorphic in :-

A. Aloe

B. Indigofera

C. Solanum nigrum

D. Colchicum

Answer:

 [Watch Video Solution](#)

31. Both the lobes of thyroid gland are interconnected with

- A. Connective tissue called the stromal tissue
- B. Connective tissue called the thyroid tissue
- C. Connective tissue called follicle tissue
- D. Connective tissue called the isthmus tissue

Answer: D



Watch Video Solution

32. Which of the following statements is correct regarding foetal development in humans?

- A. By the end of the first month of pregnancy, the foetus develops limbs and digits

- B. By the end of 12 weeks (second trimester), most of the major organ systems are formed .
- C. The first movements of the foetus and appearance of hair on the head is usually observed during the fifth month.
- D. By the end of about 26 weeks (end of the second trimester), the body is covered with fine hair, eye-lids separate, and eye lashes are formed.

Answer: C

 [Watch Video Solution](#)

33. Desert plants are generally

- A. Viviparous
- B. Succulent

C. Herbaceous

D. Heterophyllus

Answer: B



[Watch Video Solution](#)

34. Ideal cloning vector should have

A. Restriction sites

B. Selectable marker

C. Origin of replication

D. All of these

Answer: D



[Watch Video Solution](#)

35. Which one of the following pairs is not correctly matched ?

- A. Recombinant DNA- DNA formed by the joining of segments of DNA from different sources
- B. Purine - Nitrogenous bases cytosine, thymine and uracil
- C. ATP- The principal energy carrying compound in the cell
- D. r-RNA- RNA molecules found in ribosomes

Answer: B

 [Watch Video Solution](#)

36. Wine is prepared by fermentation of grape juice by

- A. *Bacillus liquifaciens*
- B. *Penicillium roqueforti*

C. *Saccharomyces cerevisiae*

D. *Streptococcus aureus*

Answer: C

 [Watch Video Solution](#)

37. Synapsides evolved around

A. 500 mya

B. 300mya

C. 650 mya

D. 800mya

Answer: B

 [Watch Video Solution](#)

38. Which of the following pigments is purplish-red and contains a vitamin derivative?

- A. Rhodopsin
- B. Iodopsin
- C. Melanin
- D. None of the above

Answer: A

 [Watch Video Solution](#)

39. Bast fibres are made up of

- A. Parenchyma cells
- B. Collenchyma cells

C. Sclerenchyma cells

D. Chlorenchyma cells

Answer: C

 [Watch Video Solution](#)

40. Which of the following does not happen during embryogenesis?

A. Cell multiplication

B. Cell differentiation

C. Equational division

D. Reduction division

Answer: D

 [Watch Video Solution](#)

41. All the following statements are correct, except

- A. Interphase is the shortest period of cell cycle
- B. Cell growth, in terms of cytoplasmic increase, is a continuous process
- C. Cycles of growth and division allow a single cell to form a structure consisting of millions of cell
- D. The replicated DNA are distributed to daughter nuclei by a complex series of event during cell division.

Answer: A



Watch Video Solution

42. The following statements are given about different plant growth hormones :

I. Cytokinin suppresses the synthesis of chlorophyll.

II. Auxins control apical dominance.

III. Gibberellins promote shoot elongation.

IV. Abscisic acid enables seeds to withstand desiccation.

Which of the above statements are correct?

A. I and II

B. II and III

C. I and III

D. II,III and IV

Answer: D

 [Watch Video Solution](#)

43. Which of the following will decay faster?

- A. Sapwood
- B. Softwood
- C. Wood with lot of fibres
- D. Heartwood

Answer: A

 [Watch Video Solution](#)

44. A high density of tiger population in an area can result in :

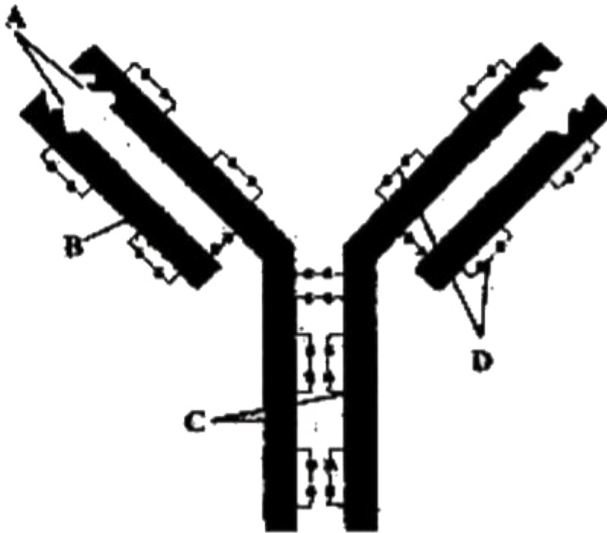
- A. Migration
- B. Interspecific competition
- C. Intraspecific competition

D. Proto cooperation

Answer: C

[Watch Video Solution](#)

45. Choose the option which rightly labels A,B, C and D in the figure given



- A. A-light chains,B-heavy chain, C-antigen binding sites, D-disulphide bonds
- B. A-disulphide bonds, B-antigen binding site, C-heavy chains, D-light chains
- C. A-antigen binding sites, B-light chain, C-heavy chains,D-disulphide bonds
- D. A-antigen binding sites, B-disulphide bonds, C-light chains, D-heavy chains

Answer: C

 [Watch Video Solution](#)

46. In the electron transport system, a molecule of ATP is formed when an electron passes from :

- A. Cytochrome -c to cytochrome-a
- B. Cytochrome-a to cytochrome -c
- C. Cytochrome-b to cytochrome- c_1
- D. Cytochrome-c to cytochrome-b

Answer: C

 [Watch Video Solution](#)

47. In the wall of alimentary canal which is the true sequence from outer to inner side

- A. Serosa, longitudinal muscle, mucosa, submucosa
- B. Mucosa, serosa, longitudinal muscle
- C. Serosa, longitudinal muscle, circular muscle, submucosa, mucosa

D. Serosa, circular muscle, submucosa, mucosa

Answer: C

 [Watch Video Solution](#)

48. Read the following sentences :

(a) In elution, the separated bands of DNA are cut out from agarose gel & extracted from the gel piece.

(b) E coil cloning vector pBR322 have several restriction sites, Ori, antibiotic resistance genes & ROP.

(c) The downstream processing and quality control testing vary from product to product.

(d) Competent bacterial cells cannot take up the plasmid.

A. All are correct

B. Only (b) is correct

C. Only (d) is correct

D. All are incorrect

Answer: A

 [Watch Video Solution](#)

49. Which of the following statements is false?

A. Aqueous humor leak out by canal of schlemm into blood capillaries and again reach upto their veins.

B. A transparent, biconvex lens is present just after iris.

C. Iris divides the vitreous chamber into two parts, anterior chamber and posterior chamber.

D. Aqueous and vitreous humor both the fluids are secreted by the glands of ciliary body.

Answer: C



Watch Video Solution

50. During ventricular systole

- A. Oxygenated blood is pumped into the pulmonary artery and deoxygenated blood is pumped into the artery
- B. Oxygenated blood is pumped into the aorta and deoxygenated blood is pumped into the pulmonary vein
- C. Oxygenated blood is pumped into the pulmonary vein and deoxygenated blood is pumped into the pulmonary artery
- D. Oxygenated blood is pumped into the aorta and deoxygenated blood is pumped into the pulmonary artery

Answer: D

 [Watch Video Solution](#)

51. Which of the following is correct regarding glycolysis ?

- A. It occurs in the cytoplasm of the cell.
- B. Hydrogen atoms are removed from NAD^+ and transferred to PGAL.
- C. ATP is consumed during the conversion of PEP to pyruvic acid.
- D. Conversion of BPGA to PGA is an energy-yielding process.

Answer:

 [Watch Video Solution](#)

52. Which one of the following statements is correct for secondary succession?

A. It begins on a bare rock.

B. It occurs on a deforested site.

C. It follows primary succession.

D. It is similar to primary succession except that it has a relatively fast pace.

Answer: B



[Watch Video Solution](#)

53. During ionic flux, uptake of ions into inner space is

A. Active

B. Passive

C. Energy-dependent

D. Both active and energy-dependent

Answer: B



Watch Video Solution

54. Which of the following factors play a role in primary productivity?

A. Light and temperature

B. Water and nutrients

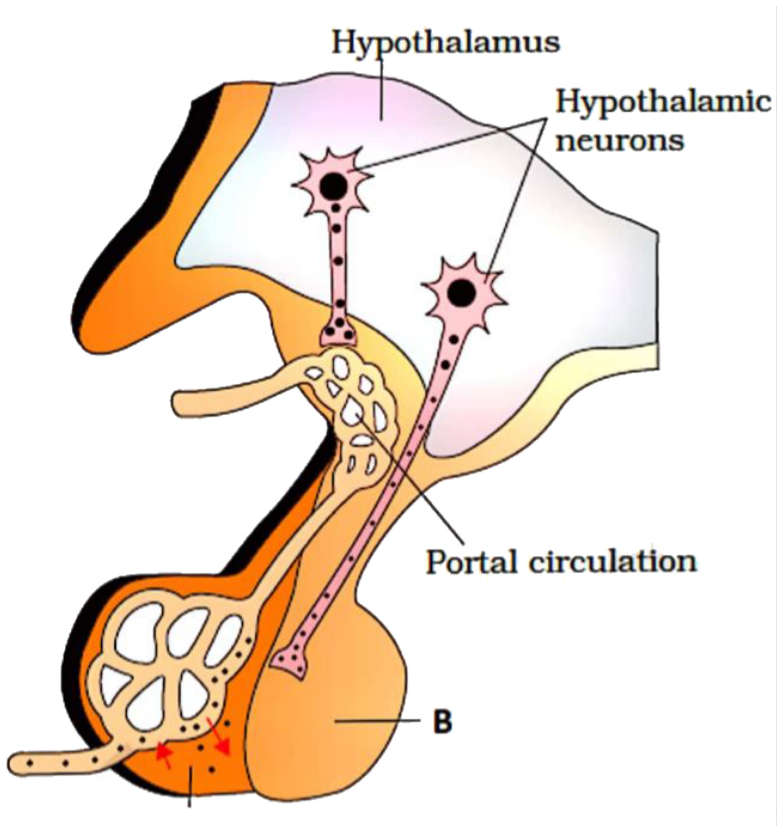
C. Photosynthetic capacity of producers

D. All of these

Answer: D

 Watch Video Solution

55. Which of the following hormones pass-through "route-B" in the given figure ?



- A. Oxytocin and vasopressin
- B. TSH and prolactin
- C. GnRH and somatostatin
- D. GH and gonadotropin

Answer: A

 [Watch Video Solution](#)

56. Find out wrong statement regarding Cycas.

- A. It has an unbranched stem.
- B. It possesses pinnately compound leaves
- C. It is a dioecious plant.
- D. It is a non-archegonial plant

Answer: D

 [Watch Video Solution](#)

57. Variable number of tandem repeats (VTNRs) in the DNA molecule are highly useful in :

- A. Monoclonal antibody production
- B. DNA fingerprinting
- C. Recombinant DNA technology
- D. Stem cell culture

Answer: B

 [Watch Video Solution](#)

58. Parturition is induced by

- A. A complex neuroendocrine mechanism
- B. A neuroexocrine mechanism
- C. A physio-chemical mechanism
- D. None of the above

Answer: A



[Watch Video Solution](#)

59. All the following involves osmosis, except

- A. Water entering from soil to root hair
- B. Water passing from root hair to adjacent cells
- C. Water movement into the xylem vessel element.

D. Water entering a mesophyll cell from xylem vessel element

Answer: C



[Watch Video Solution](#)

60. When fungi feed on dead organic matter, they are known as

A. Dimorphic

B. Parasites

C. Saprophytes

D. None of these

Answer: C



[Watch Video Solution](#)

61. Consider the following statements and select the option stating which ones are true (T) and which ones are false (F)

(i) Abortions could happen spontaneously too

(ii) Infertility is the inability to produce viable offspring due to defects in the female partner only.

(iii) Complete lactation could help in contraception

(iv) Creating awareness can help to create a reproductively healthy society.

A. $\begin{matrix} i & ii & iii & iv \\ F & F & T & T \end{matrix}$

B. $\begin{matrix} i & ii & iii & iv \\ F & T & F & T \end{matrix}$

C. $\begin{matrix} i & ii & iii & iv \\ T & F & T & T \end{matrix}$

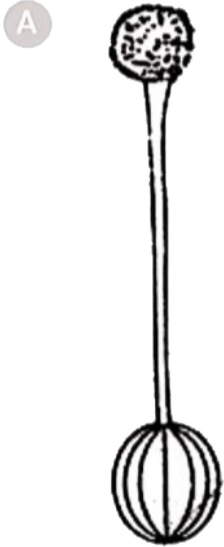
D. $\begin{matrix} i & ii & iii & iv \\ T & T & F & F \end{matrix}$

Answer: C



Watch Video Solution

62. Which of the following type of gynoecium is associated with wind pollination



A.



B.

C



C.

D



D.

Answer: B



Watch Video Solution

63. A reduction in the quantity of oxygen evolution during photosynthesis may be observed at

- A. Light having wavelength more than 680 nm
- B. Light having wavelength less than 680 nm
- C. Light having wavelength 560nm
- D. Light having wavelength less than 360nm

Answer: A

 [Watch Video Solution](#)

64. Read the below given statements with respect to three important steps of decomposition: Fragmentation, leaching and catabolism. select the correct option.

(i) Detritivores (e.g., earthworm) breakdown detritus into smaller particles.

(ii) Water soluble inorganic nutrients go down into soil horizon and get precipitated as unavailable salts.

(iii) Decomposers (e.g., bacteria and fungi) secrete digestive enzymes and degrade detritus into simpler inorganic substances.

A. B

B. A

C. C

D. D

Answer: C



Watch Video Solution

65. The correct statements about the working of oral pills are:

(i) Inhibit ovulation and implantation

(ii) Alter the quality of cervical mucus to prevent or retard the entry of sperms

(iii) Inhibit spermatogenesis

A. I,II and III

B. I and II

C. II only

D. III only

Answer: B



Watch Video Solution

66. Species diversity generally increases as one proceeds from

A. Low altitude to high altitude, and from low latitudes to high latitudes

B. High altitude to low altitude, and from low latitudes to high latitudes

C. High altitude to low altitude, and from high latitudes to low latitudes

D. Low altitude to high altitude, and from high latitudes to low latitudes

Answer: C

 [Watch Video Solution](#)

67. In tissue culture experiments of tobacco callus, it was seen that when the culture medium contains 2 ppm of IAA and 2ppm of kinetin, an undifferentiated mass of callus is produced. If the ratio of kinetin to IAA is increased, then

A. The callus size would increase by repeated cell divisions

B. Root initiation would take place

C. Shoot initiation would occur

D. The callus would die

Answer: C

 [Watch Video Solution](#)

68. In human beings, the color of skin is controlled by

A. Multiple alleles

B. Lethal genes

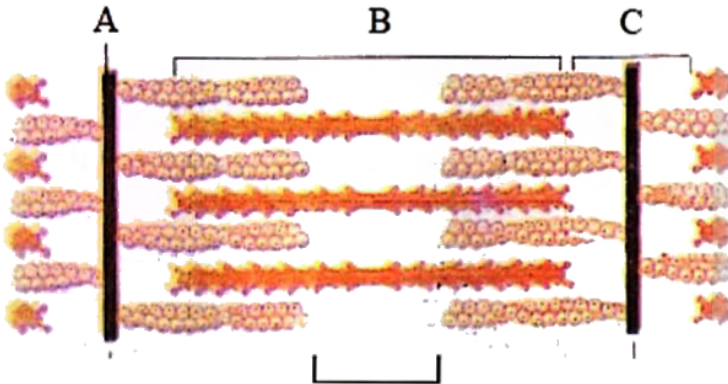
C. Polygenic effect

D. None of these

Answer: C

 [Watch Video Solution](#)

69. Given below is the diagrammatic representation of a sarcomere. Mark the option with a correct description of the structure labelled as A, B, C and D in the same.



A. A- Elastic fibre that bisects I-band

B-Width of this band reduces during muscle contraction

B. B-Consists of myosin filaments

C- Width of this band remains same during muscle contraction

C. C-Light band that contains actin filaments

D- Don't exist when the sacromere get contracted maximally

D. A-Z - line to which thin filaments are firmly attached

D-H - zone which can be seen in a maximally contracted muscle fiber also

Answer: C



[Watch Video Solution](#)

70. A nematode *Meloidogyne* infects the roots of tobacco plants and causes a great reduction in the yield. A novel strategy was adopted to prevent this infestation which was based on the process of

A. RNAi

B. mRNA silencing

C. Anti-sense RNA technology

D. All of these

Answer: A



Watch Video Solution

71. Which one of the following is correctly matched?

A. Ginger-Sucker

B. Chlamydomonas -Conidia

C. Yeast-Zoospores

D. Onion-Bulb

Answer: D



[Watch Video Solution](#)

72. Transgenic crops are modified through genetic engineering to develop natural resistance to insect pests. Which of these pairs consist of transgenic crops?

- A. Bt Tobacco and Bt Cotton
- B. Tomato and Bt rice
- C. Maize and sugarcane
- D. Bt Tomato and Wheat

Answer: A



[Watch Video Solution](#)

73. Given below is a list of various diseases / disorders.

a. Phenylketonuria, b. Grave's disease, c. Thalassemia, d. Rheumatoid arthritis, e. Myasthenia gravis, f. Colour blindness, g. Blindness

Which one of the following represents hereditary disease ?

A. a,b,d, and e

B. a,c,f and g

C. c,f, and g

D. a,c and f

Answer: B



Watch Video Solution

74. Which of the following set of coenzymes are nucleotides of vitamin niacin?

A. NAD, NADP

B. FMN, FAD

C. ATP, ADP

D. ATP, FAD

Answer: A

 [Watch Video Solution](#)

75. The classification of organisms based on chromosome number is called

A. Cytotaxonomy

B. Numerical taxonomy

C. Karyotaxonomy

D. Biochemistry

Answer: A



Watch Video Solution

76. Biological oxygen demand (BOD) is a measure of

A. Industrial wastes poured into water bodies

B. Extent to which water is polluted with organic compounds

C. Amount of carbon monoxide inseparably combined with
haemoglobin

D. Amount of oxygen needed by green plants during night

Answer: B

 [Watch Video Solution](#)

77. Which of the following statement / s is / are correct about crack?

- A. It interferes with transport of neurotransmitter dopamine.
- B. It produces a sense of euphoria
- C. Excessive dosage causes hallucinations.
- D. All of these

Answer: D

 [Watch Video Solution](#)

78. In many cells ribosomes occur in chains along messenger RNA.

What is the advantage of this arrangement as compared to a situation in which ribosomes occur singly?

- A. Fewer tRNA molecules are used in protein synthesis
- B. Polypeptides can be produced more easily.
- C. A greater variety of polypeptides can be produced
- D. Probability of gene mutation occurring is less

Answer: B



Watch Video Solution

79. $NADP^+$ is reduced to NADPH in

- A. Cyclic photophosphorylation

B. In PS II

C. Calvin cycle

D. Non-cycle photophosphorylation

Answer:



Watch Video Solution

80. Which type of white blood cells are concerned with the release of histamine and the natural anticoagulant heparin ?

A. Neutrophils

B. Basophils

C. Eosinophils

D. Monocytes

Answer: B



Watch Video Solution

81. The macronutrient which is an essential component of all organic compounds, yet not obtained by plants from soil is

- A. Nitrogen
- B. Carbon
- C. Phosphorous
- D. Magnesium

Answer: B



Watch Video Solution

82. Water potential in leaf tissue is 'positive' (near zero) during

- A. Excessive transpiration
- B. Low transpiration
- C. Excessive absorption
- D. Guttation

Answer: D



[Watch Video Solution](#)

83. The living component of phloem tissue is

- A. Sieve tube
- B. Companion cells
- C. Bast parenchyma

D. All of these

Answer: D



Watch Video Solution

84. Taxonomy refers to

A. Plant classification

B. Plant nomenclature

C. Plant affinity

D. All of these

Answer: D



Watch Video Solution

85. Which among the following is the most abundant protein in animal world

A. Haemoglobin

B. Keratin

C. RuBisCO

D. Collagen

Answer: D



[Watch Video Solution](#)

86. Select the wrong statement from the following

A. Both chloroplasts and mitochondria have an internal compartment, bounded by the thylakoid membrane.

B. Both chloroplasts and mitochondria contain DNA.

C. The chloroplasts are generally much larger than mitochondria

D. Both chloroplasts and mitochondria contain an inner and an outer membrane.

Answer: A

 [Watch Video Solution](#)

87. The nephridia of earthworm are concerned with

A. Locomotion

B. Excretion of nitrogenous wastes

C. Digestion

D. Respiration

Answer: B

 [Watch Video Solution](#)

88. Primary roots and its branches constitute

- A. Tap root system
- B. Adventitious root system
- C. Tertiary root system
- D. Fibrous root system

Answer: A

 [Watch Video Solution](#)

89. 'Bhang' and 'Ganja' are

- A. Extract of hemp plant -Cannabis sativa
- B. Ripe poppy fruits and leaves
- C. Dried leaves, flowers and buds of Cannabis indica plant
- D. None of the above

Answer: A

 [Watch Video Solution](#)

90. Which of the following are common freshwater fishes?

- A. Mackerel and Rohu
- B. Rohu, common carp and Catla
- C. Hilsa and Sardine
- D. None of these

Answer: B



Watch Video Solution