



## BIOLOGY

### BOOKS - NTA MOCK TESTS

### NEET MOCK TEST 11

#### Biology

1. An undifferentiated layer, mesoglea, is present in

- A. Fasciola
- B. Ancylostoma
- C. Hirudinaria
- D. Adamsia

**Answer:**



[Watch Video Solution](#)

2. A variety effective against shoot and fruit borer is

- A. Pusa Gaurav
- B. Pusa Sawani
- C. Pusa Sem 2
- D. Pusa Sem 3

**Answer:**



[Watch Video Solution](#)

3. Butyric acid is produced by

- A. *Aspergillus niger*
- B. *Acetobacter aceti*

C. *Clostridium butylicum*

D. *Lactobacillus*

**Answer:**

 [Watch Video Solution](#)

4. Every 100 ml oxygenated blood can deliver around

A. 5 ml of  $O_2$  to the alveoli

B. 5 ml of  $O_2$  to the tissues

C. 4 ml of  $CO_2$  to the tissues

D. 4 ml of  $CO_2$  to the alveoli

**Answer:**

 [Watch Video Solution](#)

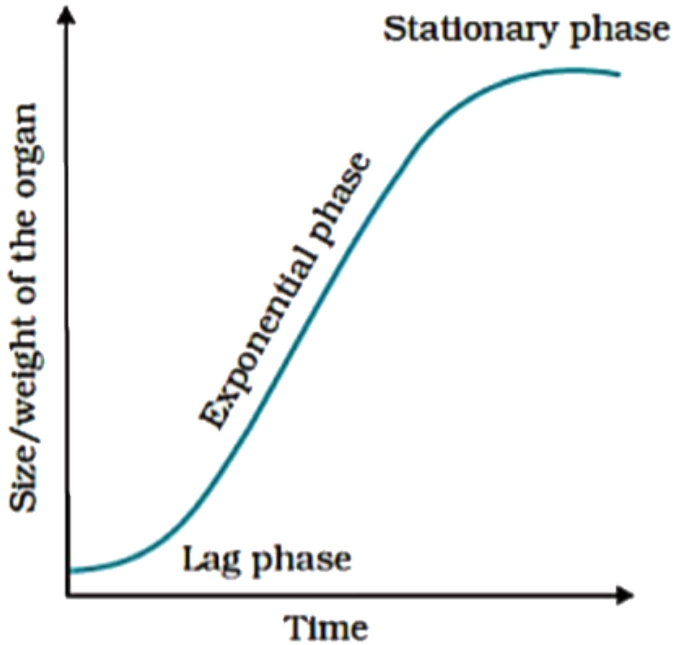
5. Sometimes a few chromosomes have non-staining secondary constrictions at a constant location. This gives the appearance of small fragment called the

- A. Satellite
- B. Centromere
- C. Telomere
- D. Kinetochore

**Answer:**

 [Watch Video Solution](#)

6. A growth curve of a plant is shown below. The mathematical expression for growth curve will be:



A.  $L_t = L_0 + rt$

B.  $W_1 = W_0 e^t$

C.  $W_1 = W_0 e^{rt}$

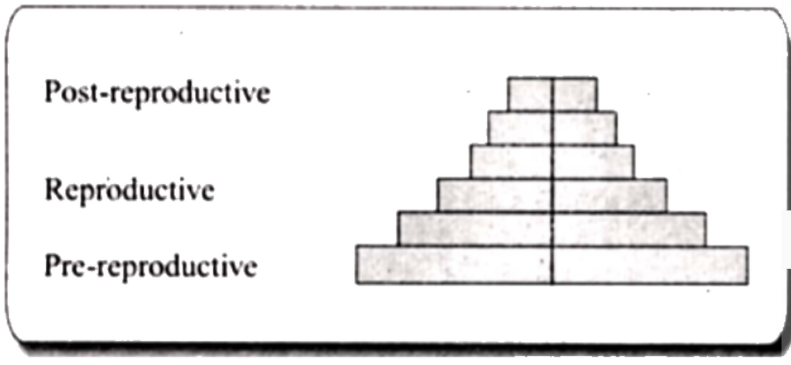
D.  $L_t = L_0 + t$

**Answer:**



[Watch Video Solution](#)

7. The age pyramid for human population is shown below



Which of the following conclusion can be drawn from the given age pyramid?

- A. It represents that the population is young the growing.
- B. It is a pyramid of declining population
- C. It shows that the population is stable.
- D. It shows that the population size is fluctuating.

**Answer:**

 [Watch Video Solution](#)

8. Aggregates of lymphoid tissue present in the distal portion of the small intestine are known as

- A. Villi
- B. Peyer's patches
- C. Rugae
- D. Choroid plexus

**Answer:**

 [Watch Video Solution](#)

9. What is correct about the compound epithelium?

- A. It is multi-layered
- B. Its main function is protection against chemical and mechanical stress.

C. They cover inner lining of ducts of salivary glands.

D. all of these

**Answer:**



[Watch Video Solution](#)

**10.** Felidae and Canidae are examples of which taxonomical category?

A. Genus

B. Order

C. Family

D. Class

**Answer:**



[Watch Video Solution](#)



11. Which one of the following is not a micronutrient?

- A. Molybdenum
- B. Magnesium
- C. Zinc
- D. Boron

**Answer:**

 [Watch Video Solution](#)

12. A scrubber in the exhaust of a chemical industrial plant removes:

- A. Gases like  $SO_2$ .
- B. Particulate matter of the size  $5 \mu m$  or above.
- C. Gases like ozone and methane.
- D. Particulate matter of the size  $2.5 \mu m$  or less.

**Answer:**



[Watch Video Solution](#)

**13.** Find incorrect statement w.r.t. pollen grains.

- A. Generally spherical measuring about 25-50 micro meters
- B. Exineless areas in pollen wall are called germ pore
- C. The vegetative cell is bigger has abundant food reserves and a large irregularly shaped nucleus.
- D. The generative cell has abundant cytoplasm and an irregular shaped nucleus

**Answer:**



[Watch Video Solution](#)

14. Which part of human brain is concerned with the regulation of body temperature?

- A. Cerebellum
- B. Cerebrum
- C. Hypothalamus
- D. Medulla oblongata

**Answer:**

 [Watch Video Solution](#)

15. Vector for dengue and chikungunya is

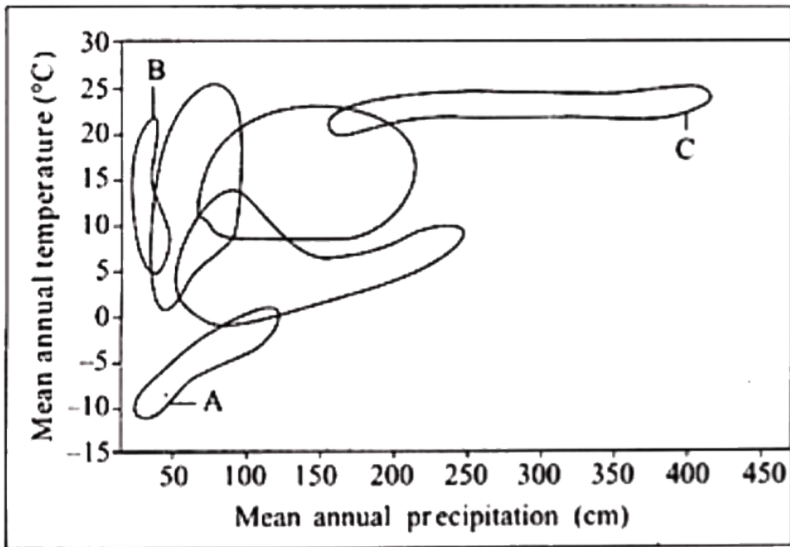
- A. Female Anopheles mosquito
- B. Male anopheles mosquito
- C. Culex mosquito

D. Aedes mosquito

Answer:

 [Watch Video Solution](#)

16. The graph given below is showing biome distribution with respect to annual temperature and precipitation. Identify A, B and C, respectively.



A. A-Desert, B-Arctic tundra: C-Coniferous forest

B. A-Arctic tundra, B-Desert, C-Tropical forest

C. A-Temperate forest, B-arctic tundra, C-Desert

D. A-Temperate forest, B-Arctic tundra, C-Grassland

**Answer:**

 [Watch Video Solution](#)

**17.** In EcoRI, the letter 'R' is derived from

A. Genus

B. Species

C. Strain

D. Class

**Answer:**

 [Watch Video Solution](#)

**18.** Ascaris is characterized by

- A. Absence of true coelom but presence of metamerism
- B. Presence of neither true coelom nor metamerism
- C. Presence of true coelom and metamerism
- D. Presence of true coelom but the absence of metamerism

**Answer:**



[Watch Video Solution](#)

**19.** The anterior pituitary hormone that does not stimulate another endocrine gland is

- A. somatotropin
- B. Thyrotropin

C. Gonadotropin

D. Adrenocorticotropin

**Answer:**



[Watch Video Solution](#)

20. Mark the ODD one out.

A. Oxaloacetic acid

B. Malic acid

C. Citric acid

D. Succinic acid

**Answer:**



[Watch Video Solution](#)

21. Isogamous reproduction and flagellated gametes can be observed in

- A. Polysiphonia
- B. Fucus
- C. Ulothrix
- D. Spirogyra

**Answer:**

 [Watch Video Solution](#)

22. Receptors with aortic arch and carotid artery can recognise changes in

- A. Only  $CO_2$  concentration in blood
- B.  $H^+$  and  $O_2$  concentration in blood



C.  $CO_2$  and  $H^+$  concentration in blood

D.  $O_2$  concentration in blood

**Answer:**

 [Watch Video Solution](#)

**23.** Which of the following organisms are correctly paired with its life span?

A. Crow-15 years

B. Butterfly-3 weeks

C. Parrot-40 years

D. Crocodile-100-150 years

**Answer:**

 [Watch Video Solution](#)

24. The packaging of chromatin at a higher level requires an additional set of proteins that collectively are referred to as

- A. Histones
- B. NHC proteins
- C. Tubulin
- D. Actin

**Answer:**

 [Watch Video Solution](#)

25. Which of the following statement is incorrect?

- A. Basmati rice is distinct for its unique aroma and flavour and 27 documented varieties of basmati are grown in india.

B. Biopiracy is the term used to refer to the use of bio-resources by multinational companies and other organizations without proper authorization from the countries and people concerned without compensatory payment.

C. Transgenic animals that produce useful biological products can be created by the introduction of the portion of DNA (or genes) which codes for a particular product such as human protein (alpha-1-antitrypsin) used to treat Phenylketonuria.

D. The Indian government has set up organizations such as GEAC (Genetic Engineering Approval Committee), which will make decisions regarding the validity of GM research and the safety of introducing GM-organisms for public services.

**Answer:**

 [Watch Video Solution](#)

26. Select the incorrect statement regarding the transport of gases in the blood.

- A. About 97% of  $O_2$  is transported by RBCs in the blood.
- B. Carbonic anhydrase is present in very high concentration in RBC
- C. High  $pCO_2$  and low  $pO_2$  in tissue help in binding of carbon dioxide
- D.  $CO_2$  is carried in haemoglobin as carboxyhemoglobin

**Answer:**

 [Watch Video Solution](#)

27. The mathematical expression of diffusion pressure deficit is

A.  $DPD = OP - TP$

B.  $DPD = OP + WP$

C.  $DPD = WP - OP$

D.  $DPD = TP + OP$

**Answer:**



**Watch Video Solution**

**28.** In which technique, to form embryo in the laboratory a sperm is directly injected into the ovum?

A. IVF-EF

B. ICSI

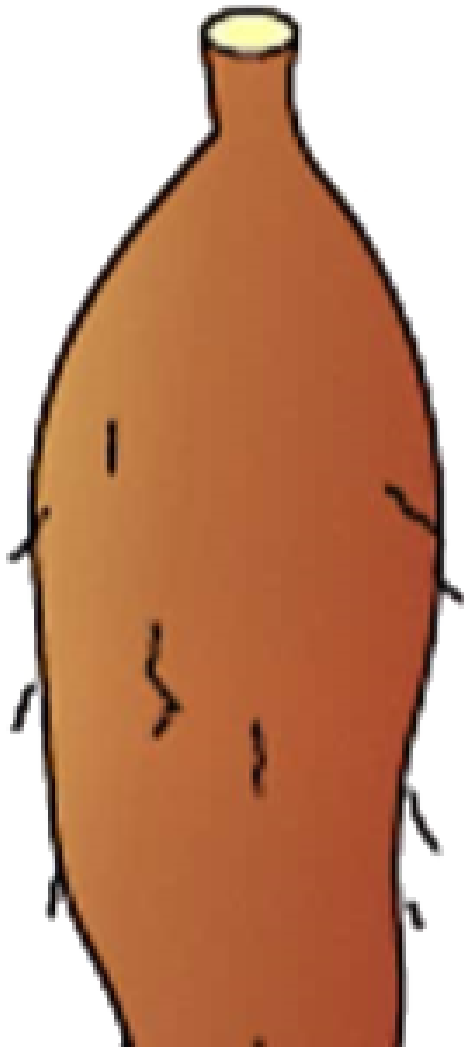
C. GIFT

D. IUI

Answer:

[Watch Video Solution](#)

29. Which kind of modification is seen in the given diagram?





- A. Tap root for storage
- B. Adventitious roots for supports
- C. Adventitious root for storage
- D. Tap root for respiration

**Answer:**



**Watch Video Solution**

**30.** Kingdom Plantae includes

A. Algae, Bryophytes and Pteridophytes only

B. Algae, Bryophytes, Pteridophytes, Gymnosperms and Angiosperms only.

C. Algae, Fungi, Pteridophytes, Gymnosperms and Angiosperms only.

D. Algae, Pteridophytes, Gymnosperms and Angiosperms only.

**Answer:**



**Watch Video Solution**

**31.** A change in the relative abundance of an allele (the allelic frequency) within a population, over a succession of generations, is called



- A. Micro-evolution
- B. Macro-evolution
- C. Co-evolution
- D. Phylogenetic evolution

**Answer:**

 [Watch Video Solution](#)

**32.** "The formation of life was preceded by chemical evolution". This statement was given by,

- A. Urey and Miller
- B. Jacob and Monod
- C. Fischer and Huxley
- D. Oparin and Haldane

**Answer: D**

 [Watch Video Solution](#)

**33.** Foetal ejection reflex is produced by

- A. Fully developed foetus only
- B. Placenta only
- C. Fully devepoled foetus and placenta
- D. Fully developed foetus, placenta and endometrium

**Answer: C**

 [Watch Video Solution](#)

**34.** Algae used by Calvin and associated from photosynthetic research is

- A. Chlorella
- B. Chlamydomonas
- C. Volvox
- D. All the above

**Answer:**

 [Watch Video Solution](#)

**35. Biofertilizers include**

- A. Nitrogen fixing bacteria
- B. Nitrogen fixing cyanobacteria
- C. Mycorrhiza
- D. All of these

**Answer:**



[Watch Video Solution](#)

36. The enzyme used to join the DNA fragments is :

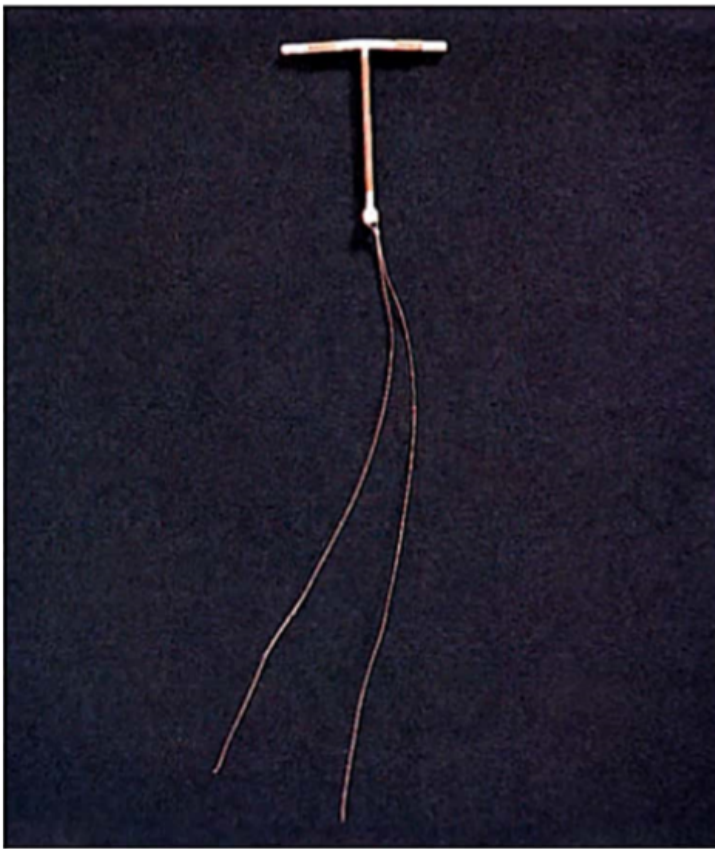
- A. Topoisomerase
- B. Adenosine deaminase
- C. DNA ligase
- D. DNA polymerase

**Answer:**



[Watch Video Solution](#)

37. What is correct about the contraceptive method shown in the diagram below?



- A. It releases Ca ions that suppress sperm motility
- B. It releases Cu ions that suppress sperm motility
- C. It is a hormone-releasing IUDs, that make the uterus unsuitable for implantation.
- D. It prevents the entry of sperm in the uterus.

**Answer: B**



**Watch Video Solution**

**38.** Uric acid is nitrogenous waste in

- A. Birds and lizards
- B. Insects and bony fishes
- C. Frog and cartilaginous fishes
- D. Mammals and molluscs

**Answer:**



**Watch Video Solution**

**39.** Holoenzyme is

- A. Non-protein and apoenzyme
- B. Protein and apoenzyme
- C. Enzyme, protein and coenzyme
- D. Enzyme, non-protein and coenzyme

**Answer:**

 [Watch Video Solution](#)

**40.** Which of the following is grown to provide human food rich in proteins, lipids, carbohydrates, vitamins and minerals

- A. Spirogyra
- B. Ulothrix
- C. Oscillatoria
- D. Chlorella

**Answer:**



**Watch Video Solution**

**41.** What is an eye of potato?

- A. Axillary bud
- B. Accessory bud
- C. Adventitious bud
- D. Apical bud

**Answer:**



**Watch Video Solution**

**42.** The waste products produced in man are



A. Carbon dioxide

B. Urea and salts

C. Excess of water

D. All of these

**Answer:**



**Watch Video Solution**

**43.** Which type of organism are PPLO?

A. Virus

B. Viroid

C. Mycoplasma-like

D. Bacteria

**Answer:**



[Watch Video Solution](#)

44. Under what condition, the upright pyramid of biomass becomes inverted?

- A. Grassland ecosystem
- B. Terrestrial ecosystem
- C. Pond ecosystem
- D. Tree ecosystem

**Answer:**



[Watch Video Solution](#)

45. Match List I and List II and select the correct answer using the code given below in the lists:

List I (Phase of meiosis)

List II (Event that occurs)

Prophase I

Crossing over occurs

Metaphase I

Sister chromatids migrate to opposite poles

Anaphase I

Homologous line up at equator in pairs

- A. 1,2 and 3 are correct
- B. 1 and 2 are correct, 3 is false
- C. 1 is correct, 2 and 3 are false
- D. 1 and 3 are correct, 2 is false.

**Answer:**



[Watch Video Solution](#)

**46.** A root was described as adventitious root because it

- A. Arose from plumule
- B. Was used variously for storage of food
- C. was swollen

D. Was growing in marshy place

**Answer:**

 [Watch Video Solution](#)

47. Osmosis is the passage of water through a semipermeable membrane from

A. A higher concentration of water molecules to lower concentration

B. Lower concentration of water molecules to higher concentration

C. Equal concentration of water molecules

D. None of these

**Answer:**

48. Which of the following strategy is not a correct approach to reduce global warming ?

- A. Reducing the green-house gas emission by limiting the use of fossil fuels.
- B. Increase the vegetation cover particularly the forest for photosynthetic utilization of  $CO_2$ .
- C. Minimising the use of nitrogen fertilizers, in agriculture for reducing  $NO_2$  emission.
- D. Increasing the use of air conditoners, refrigeration units, and production of plastic.

**Answer:**

49. Which type of cell division occurs in the gonads

- A. Mitosis only
- B. Meiosis
- C. Both mitosis and Meiosis
- D. Amitosis and meiosis

**Answer:**

 [Watch Video Solution](#)

50. Gigantism and dwarfism are the disease related to

- A. Prolactin hormone of mammary gland
- B. Growth hormone of adenohypophysis
- C. Luteinising hormone of pituitary gland

D. Thyroid stimulating hormone of thyroid

**Answer:**

 [Watch Video Solution](#)

51. What is PAR range?

A. 200nm-800nm

B. 400nm-700nm

C. 350nm-550nm

D. 600nm-100nm

**Answer:**

 [Watch Video Solution](#)

52. The respiratory quotient during cellular respiration would depend on

- A. Nature of enzymes involved
- B. Nature of the substrate
- C. Amount of carbon dioxide released
- D. Amount of oxygen utilized

**Answer:**

 [Watch Video Solution](#)

53. Allergy is due to release of which of the chemical from mast cells and basophils?

- A. Histamine
- B. Heparin
- C. Serotonin



A. A only

B. A & B

C. A & C

D. B & C

**Answer:**

 [Watch Video Solution](#)

**54.** How many ATP molecules are generated in Calvin cycle ?

A. 18

B. 12

C. 6

D. 0

**Answer:**



[Watch Video Solution](#)

55. Somatostatin is a

- A. Peptide hormone
- B. An enzyme
- C. A steroid
- D. A carbohydrate

**Answer:**



[Watch Video Solution](#)

56. Which of the following sets is of flightless birds

- A. Columba and Psittacula
- B. Struthio and Aptenodytes

C. Corvus and Columba

D. Pavo and Neophron

**Answer:**

 [Watch Video Solution](#)

**57.** Which is the common character between all the mammals

A. They are oviparous

B. They are herbivorous

C. They are carnivorous

D. They have seven cervical vertebrae

**Answer:**

 [Watch Video Solution](#)

58. Biofortification involves breeding crops with higher levels of vitamins, proteins, minerals and healthier fats. Which of the following vegetable crop has been produced by IARI that has been enriched with Vitamin C?

- A. Bitter gourd, bathua, mustard, tomato
- B. Spinach and bathua
- C. Pumpkin, carrot and mustard
- D. French bean

**Answer:**

 [Watch Video Solution](#)

59. a plant requires magnesium for :

- A. Protein synthesis

- B. Chlorophyll synthesis
- C. Cell wall development
- D. Holding cells together

**Answer:**

 [Watch Video Solution](#)

**60.** The gastric juice contains

- A. Trypsin, pepsin, lipase
- B. pepsin, lipase, rennin
- C. Pepsin, amylase, trypsin
- D. Trypsin, pepsin, rennin

**Answer:**

 [Watch Video Solution](#)

**61.** Select the correct statement about biodiversity

A. Large scale planting of Bt cotton has no adverse effect on biodiversity.

B. Western Ghats have a very high degree of species richness and endemism.

C. Conservation of biodiversity is just a fad pursued by the developed countries.

D. The desert areas of Rajasthan and Gujarat have a very high level of desert animal species as well as numerous are animals

**Answer:**



**Watch Video Solution**

**62.** Mark the correct statement with respect to ZIFT.

- A. Ova collected from a female donor are transferred to the fallopian tube to facilitate zygote formation.
- B. Woman's egg is fertilized outside the body and then zygote is transferred to the fallopian tube.
- C. Woman's egg is fertilized outside the body and then zygote is transferred to the uterus.
- D. Ova collected from a female donor and transferred to the uterus.

**Answer: B**

 [Watch Video Solution](#)

63. Which of the following is a correct match between crop, variety and resistance to diseases ?

A.

Crops	Variety	Resistance to diseases
Wheat	Himgiri	White rust

B.

Crops	Variety	Resistance to diseases
Brassica	Pusa Sadabahar	Black rot

C.

Crops	Variety	Resistance to diseases
Cowpea	Pusa komal	Bacterial blight

D.

Crops	Variety	Resistance to diseases
Chilli	Pusa swarnim	Chilli mosaic virus

**Answer:**

 [Watch Video Solution](#)

64. Which of the following is not a correct statement?

A. A herbarium houses dried, pressed and preserved plant specimens.



B. Botanical gardens have a collection of living plants for reference.

C. A museum has a collection of photographs of plants and animals

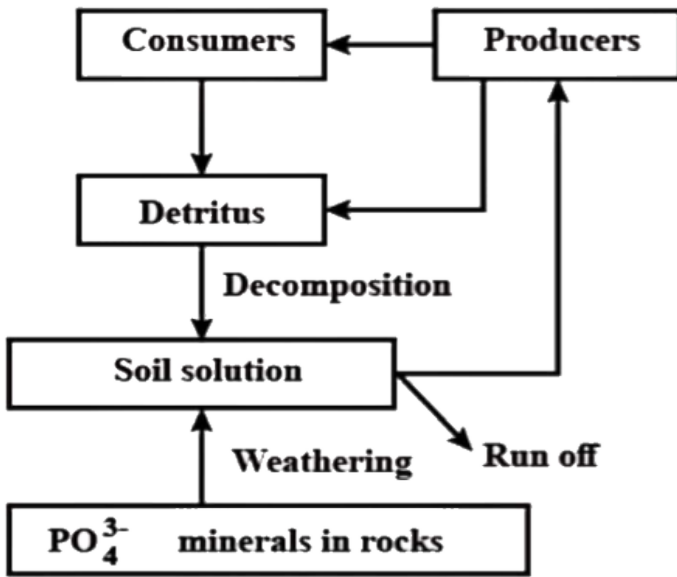
D. Key is a taxonomic aid for identification of specimens.

**Answer:**



**Watch Video Solution**

**65.** Given below is a phosphorus cycle. Select the incorrect statements from the following:



- (i) It represents phosphorus cyclic in an aquatic ecosystem.
- (ii) It represents phosphorus cyclic in a terrestrial ecosystem.
- (iii) The natural reservoir of phosphorus is forest ecosystem.
- (iii) The natural reservoir of phosphorus is forest rocks.
- (iv) There is a respiratory release of phosphorus into the atmosphere.
- (v) Gaseous exchange of phosphorus between organisms and the environment does not occur.

A. (i),(ii) and (v)

B. (i),(iii) and (iv)

C. (ii), (iii) and (iv)

D. (i), (iii), (iv) and (v)

**Answer:**

 [Watch Video Solution](#)

**66.** Which of the following pairs has a haploid structure?

A. Nucellus and antipodal cells

B. Antipodal cells and egg cell

C. Antipodal cells and megaspore mother cell

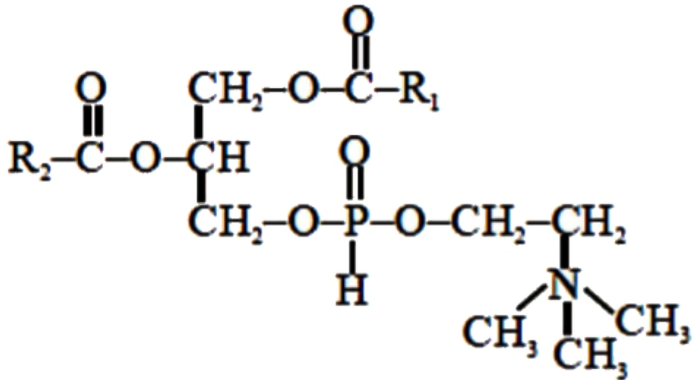
D. Nucellus and primary endosperm nucleus

**Answer:**

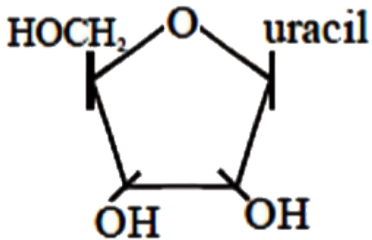
 [Watch Video Solution](#)

67. Identify the molecule (a) and (b) shown below and select the right option giving their name and occurrence.

(a)



(b)



A. (a) Lecithin-Cell membrane

B. (b) Uridylic acid-RNA

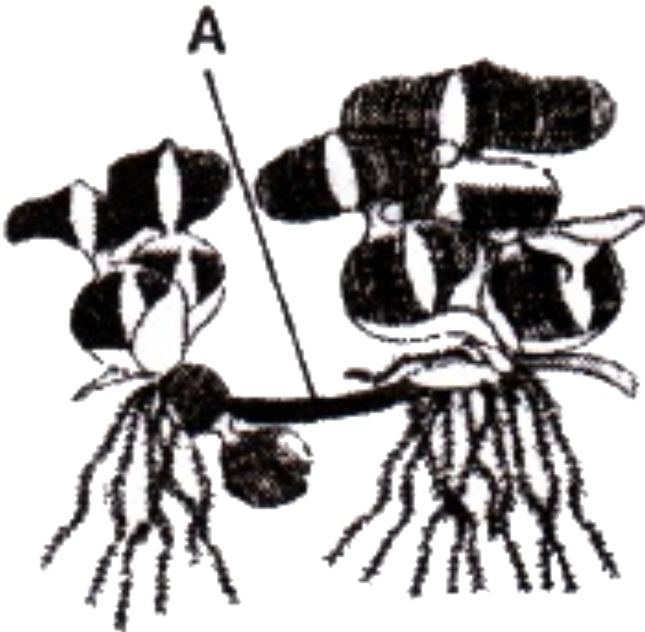
C. (a) Triglyceride-DNA

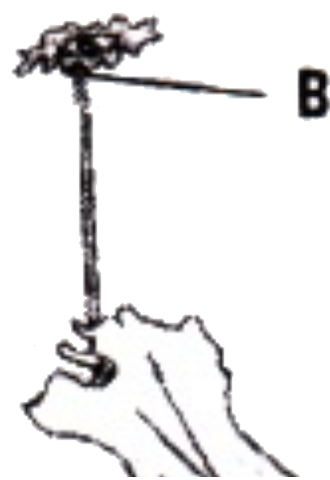
D. (b) Uracil-DNA

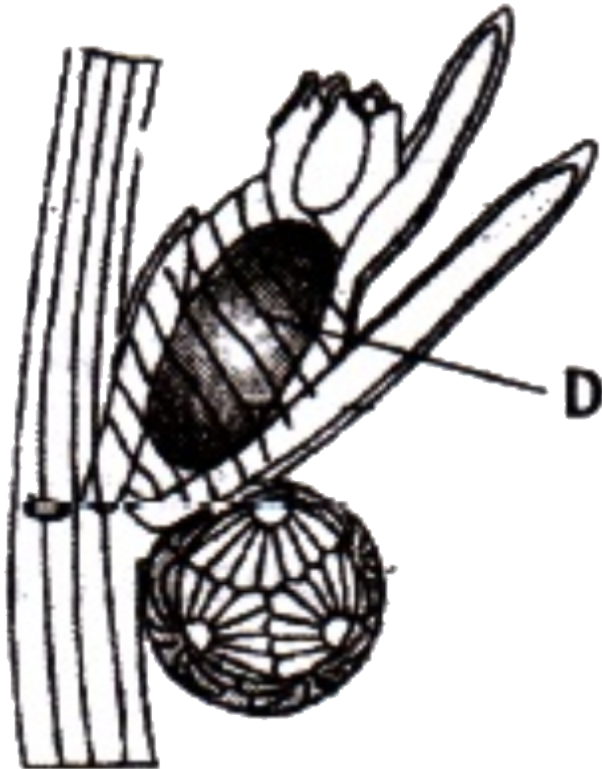
Answer:

 [Watch Video Solution](#)

68. Examine the figures (A-D) given below and select the right option out of (a-d), in which all the four structures A, B, C and D are identified correctly.







A. A-Rhizome, B-Sporangiophore, C-Polar cell, D-Globule

B. A-Runner, B-Archegoniophore, C-Synerid, D-Antheridium

C. A-Offset, B-Antheridiophore, C-Antipodals, D-Oogonium

D. A-Sucker, B-Seta, C-Megaspore mother cell, D-Gemma cup

**Answer:**



[Watch Video Solution](#)

**69.** Which of the following groups of organisms are ecologically similar?

A. Producer protists and consumer protists

B. Monerans and producer protists

C. Consumer protists and fungi

D. Monerans and fungi

**Answer:**



 [Watch Video Solution](#)

70. The longest bone of the human body is

- A. Humerus
- B. Tibia
- C. Vertebra
- D. Femur

**Answer:**

 [Watch Video Solution](#)

71. Amongst the following, which characteristic feature is not applicable to Bt cotton?

- A. Bt is the abbreviated term for botulinum toxin

B. Such cotton is resistant to armyworm and beetles.

C. The toxin is activated in the body of the insect

D. The toxin is coded by a gene called 'cry'.

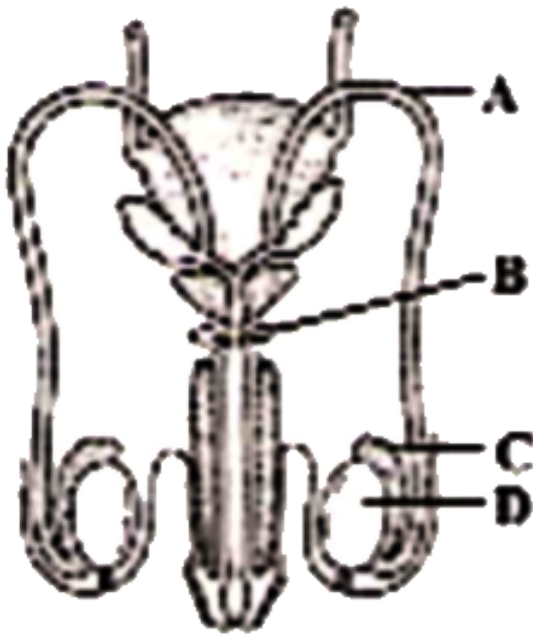
**Answer:**



**Watch Video Solution**

**72.** Observe the given diagram and read the statements carefully.

Identify the correct ones.



(i) A carries urine and sperms.

(ii) B secretes a fluid that helps in the lubrication of penis.

(iii) D produces testosterone but not sperms.

(iv) C stores sperms.

A. (i) and (ii)

B. (ii) and (iii)

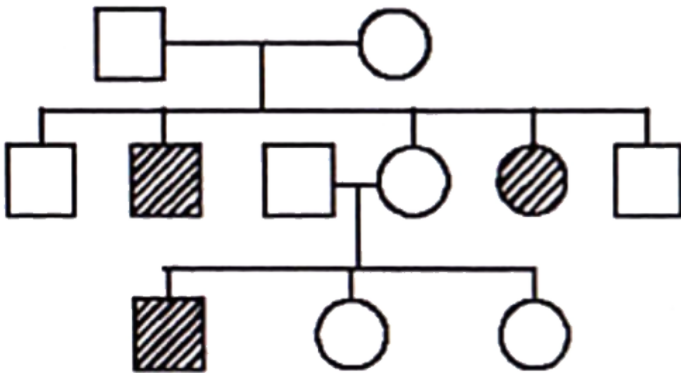
C. (ii) and (iv)

D. (i) and (iv)

Answer: C

 Watch Video Solution

73. Study the pedigree chart given below:



what does it show?

- A. Inheritance of a condition like phenylketonuria as an autosomal recessive trait.
- B. The pedigree chart is wrong as this is not possible
- C. Inheritance of a recessive sex-linked disease like haemophilia.

D. inheritance of a sex-linked inborn error of metabolism like phenylketonuria.

**Answer:**

 [Watch Video Solution](#)

**74.** Which of the following is a wrongly matched pair?

- A. Tuber-Potato
- B. Rhizome-Ginger
- C. Bulbil-Agave
- D. Leaf buds-Banana

**Answer:**

 [Watch Video Solution](#)

75. Three of the following pairs of the human skeletal parts are correctly matched with their respective inclusive skeletal category and one pair is not matched. Identify the non-matching pair

A.

Pairs of skeletal parts	Category
(a) Sternum and Ribs	Axial skeleton

B.

Pairs of skeletal parts	Category
(b) Clavicle and Glenoid cavity	Pelvic girdle

C.

Pairs of skeletal parts	Category
(c) Humerus and Ulna	Appendicular skeleton

D.

Pairs of skeletal parts	Category
(d) Malleus and Stapes	Ear ossicles

**Answer:**

 [Watch Video Solution](#)

76. Which one of the following statement is wrong with respect to RMS (restriction modification system) as the foundation of r-DNA technology?

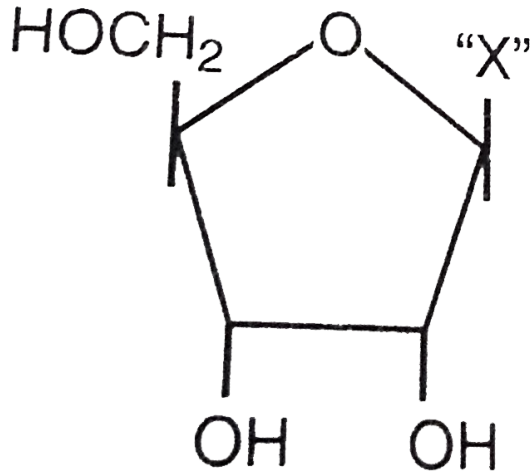
- A. Restriction endonuclease identifies introduced foreign DNA and cuts it into pieces.
- B. Modification enzymes add a methyl group to one or two bases usually within the recognition site of restriction endonuclease enzymes.
- C. Restriction endonuclease can cleave any palindromic sequence
- D. Restriction enzymes restriction the propagation of foreign DNA of bacteriophages in the host bacterium.

**Answer:**

 [Watch Video Solution](#)

77. The given diagrammatic representation shows one of the categories of small molecular weight organic compounds in the living tissues. Identify the category shown and the one blank

component "X" in it :



- A. Category Component
- B. Amino acid  $\text{NH}_2$
- C. Nucleotide Adenine
- D. Nucleoside Uracil

**Answer:**

 [Watch Video Solution](#)



78. A leaf peeling of Tradescantia is kept in a medium having 10% NaCl. After a few minutes, if we observe the leaf peel under microscope, we are likely to see

- A. Entry of water into the cell
- B. The cells bursting out
- C. Diffusion of NaCl into the cell
- D. Exit of water from the cell

**Answer:**

 [Watch Video Solution](#)

79. What are the adaptations seen in animals that live in water scarcity conditions?

- A. Having a thick coat to minimise evaporative desiccation

- B. Oxidising stored fat to produce water as by product
- C. Producing very concentrated urine and solid faeces
- D. All of these

**Answer:**

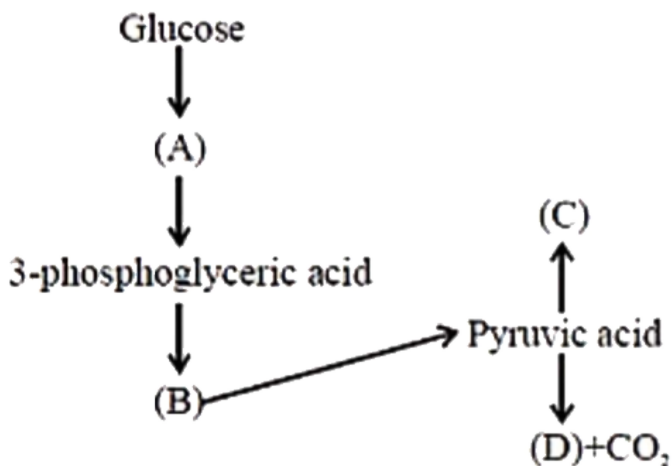
 [Watch Video Solution](#)

**80.** Mark the non-invasive technique without any side effects to diagnose the cancer of internal organs.

- A. Radiography
- B. Computed tomography
- C. Histopathological studies
- D. Magnetic resonance imaging (MRI)

**Answer: B**

81. Based on the given process, identify the correct match for A,B,C and D from the following options.



A. 

A	B	C	D
PGAL	PEP	C <sub>2</sub> H <sub>5</sub> OH	Lactic acid

B. 

A	B	C	D
PGAL	PEP	Lactic acid	C <sub>2</sub> H <sub>5</sub> OH

C. 

A	B	C	D
G-6-P	2-PGA	C <sub>2</sub> H <sub>5</sub> OH	Lactic acid

D. 

A	B	C	D
PEP	F-6-P	Lactic acid	C <sub>2</sub> H <sub>5</sub> OH

**Answer:**

 [Watch Video Solution](#)

**82.** Which kind of plants are required for uninterrupted dark-period flowering?

- A. Short day plants
- B. Long day plants
- C. Short night plants
- D. Day neutral plants

**Answer:**

 [Watch Video Solution](#)

**83.** Phenylketonuria (PKU) is an inherited disease which refers to

- A. Decrease in phenylalanine in tissue and blood
- B. Increase in phenylpyruvic acid in tissue and blood
- C. Elimination of sugar in urine
- D. Elimination of genetics acid in urine

**Answer:**

 [Watch Video Solution](#)

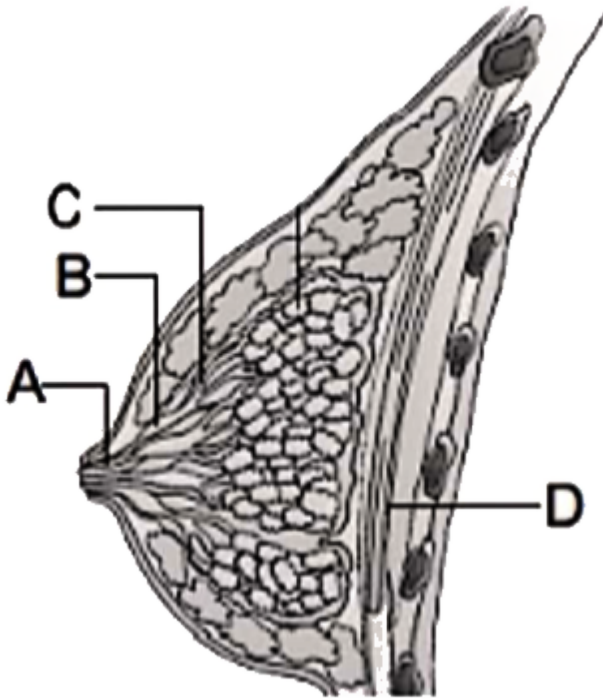
**84.** What is not true about sclereids ?

- A. These are parenchyma cells with thickened lignified walls.
- B. These are elongated and flexible with tapered ends.
- C. These are commonly found in the shells of nuts and in the pulp of guava, pear, etc.
- D. These cells also provide support.

Answer:

[Watch Video Solution](#)

85. Given below is a diagrammatic sectional view of the mammary gland. Select the option which indicates the correct labeling.



A. A-Ampulla

B. B-Mammary alveolus

C. C-Lactiferous duct

D. D-Pectoralis major muscle

**Answer: D**



[Watch Video Solution](#)

**86.** The blood of cockroach contains no respiratory pigment. It means that:

A. Cockroach does not respire

B. Respiration is anaerobic

C.  $O_2$  goes directly into tissues by diffusion

D.  $O_2$  goes into tissue by intracellular capillary system

**Answer:**



[Watch Video Solution](#)

**87.** Select the match ones.

I. nitrosomonas-Nitrite to nitrate II. Thiobacillus-Denitrification.

III. Nostoc-Free-living nitrogen-fixer

IV. Azotobacter-Anaerobic nitrogen-fixer

A. I and II

B. III and IV

C. II and III

D. II and IV

**Answer:**



[Watch Video Solution](#)



88. In flowering plants archesporium gives rise to

- A. only the wall of the sporangium
- B. Both wall and the sporogenous cells
- C. wall and the tapetum
- D. Only tapetum and sporogenous cells

**Answer:**



[Watch Video Solution](#)

89. Which of the following is a restriction endonuclease?

- A. Hind II
- B. Protease
- C. Dnase I
- D. Rnase

**Answer:**

 [Watch Video Solution](#)

**90.** Zeatin has been obtained from

A. Wheat

B. Rice

C. Maize

D. Oat

**Answer:**

 [Watch Video Solution](#)