



# BIOLOGY

## BOOKS - NTA MOCK TESTS

### NEET MOCK TEST 13

#### Mcqs Biology

1. Spindle fibres are made up of

A. Proteins

B. Cellulose

C. Lipids

D. Pectin

**Answer: A**



**Watch Video Solution**

2. Which of the following types of RNA molecule can be described as soluble, relatively small and having a folded compact shape

A. rRNA

B. tRNA

C. mRNA

D. Nucleolar RNA

**Answer: B**



**Watch Video Solution**

**3. Plant nomenclature means :-**

A. to give names of plants without any rules

B. Nomenclature of plants under the international rules

C. Nomenclature of plants in local language

D. Nomenclature of plants in english language

**Answer: B**



**Watch Video Solution**

4. Which of the following is used for bolting in beet?

A. Kinetin

B. Xylene

C. Ethylene

D. gibberellin

**Answer: D**



**Watch Video Solution**

5. A polypeptide of five amino acids is synthesized during protein synthesis in eukaryotic cells. Which one of the following can be the correct polypeptide?

A. Glycine-valine-methionine-histidine-lysine

B. Methionine-glycine-histidine-lysine-valine

C. Valine-methionine-glycine-histidine-lysine

D. histidine-lysine-methionine-valine-glycine

**Answer: B**



**Watch Video Solution**

**6. What is true for cyanobacteria?**

- A. Non-oxygenic without nitrogenase
- B. Non-oxygenic with nitrogenase
- C. Oxygenic with nitrogenase
- D. Oxygenic without nitrogenase

**Answer: C**



Watch Video Solution

7. To determine whether  $F_1$  hybrid is homozygous or heterozygous for a particular trait \_\_\_\_ Cross is performed.

A. Monohybrid

B. Test

C. Back

D. Reciprocal

**Answer: B**





Watch Video Solution

8. How many pigment molecules constitute a single photosystem?

A. 2500

B. 250-400

C. 2000

D. 2

**Answer: B**



9. Antihistamine pills are to nullify:

A. Allergic reaction

B. Malaria

C. Typhoid

D. None of these.

**Answer: A**



10. A cell swells up when kept in

- A. Hypotonic solution
- B. Hyperrrtonic solution
- C. Isotonic solution
- D. all of the above

**Answer: A**



**Watch Video Solution**

11. Sphenoid bone is found in :

A. Hindi limb

B. Lower jaw

C. Pelvic girdle

D. skull

**Answer: D**



**Watch Video Solution**

12. One of the free-living, anaerobic nitrogenfixer is

- A. Beijernickia
- B. Rhodospirillum
- C. Rhizobium
- D. Azotobacter

**Answer: B**



**Watch Video Solution**

**13.** Which of the following material is not safe to prepare carry bags?

A. Cloth

B. Paper

C. Jute

D. Polythene

**Answer: D**



**Watch Video Solution**

14. Ribosomal RNA is actively synthesized in :-

A. Lysosomes

B. Nucleolus

C. Nucleoplasm

D. Ribosomes

**Answer: B**



**Watch Video Solution**

15. In Kreb's cycle, the conversion of oxalosuccinate into  $\alpha$ -ketoglutrurate involves \_\_\_\_\_ reaction.

- A. Oxidation
- B. Reduction
- C. Hydration
- D. Decarboxylation

**Answer: D**



**Watch Video Solution**



**16.** Given below are some of the stages of the hydrarch.

(A) March-meadow stage

(B) Reed-swamp stage

(C ) submerged plant stage (D) Phytoplankton stage

Select the option that represents the correct sequence of these stages.

A. IV,III,V,II and I

B. III,V,I,II and IV

C. II,IV,III,I and V

D. IV,V,III,II and I

**Answer: A**



**Watch Video Solution**

**17. Mule is an example of\_\_\_\_\_**

A. cross-breeding

B. Interspecific hybridisation

C. Out-breeding

D. Out-crossing

**Answer: B**



**Watch Video Solution**

**18.** During rDNA technology, which one of the following enzymes is used for cleaving DNA molecule?

A. Exonuclease

B. Endonuclease

C. Restriction endonuclease

D. Helicase

**Answer: C**



**Watch Video Solution**

**19.** The chemical method of contraception includes

A. Jellies only

B. Creams and foams only

C. Oral contraceptives only

D. All of above

**Answer: D**



**Watch Video Solution**

**20.** Consider the following statements regarding photosynthesis

(A) ATP formation during photosynthesis is termed as photophosphorylation

(B) Kranz anatomy pertains to leaf

(C) Reduction of  $NADP^+$  to NADPH occurs during Calvin cycle

(D) In a chlorophyll molecule manganese is present in phytol tail

A. I and II correct

B. III and IV are correct

C. I and III are correct

D. I and IV correct

**Answer: A**



**Watch Video Solution**

21. Pollen tube at the time of entering embryo sac has

- A. Four gametes
- B. Three male gametes
- C. Two male gametes
- D. One gametic nucleus

**Answer: C**



**Watch Video Solution**

22. Knee joint and elbow joints are examples of

- A. Hinge joint
- B. Gliding joint
- C. Ball and socket joint
- D. Pivot joint

**Answer: A**



**Watch Video Solution**



**23.** Read the following statement and choose the correct option:

I. *Agrobacterium tumefaciens*, a pathogen of several monocot plants, is able to deliver a piece of DNA known as "T-DNA".

II. The tumor inducing (Ti) plasmid of *Agrobacterium tumefaciens* has been modified into a cloning vector, which is more pathogenic to the plants.

A. Both *i* and *ii* are correct

B. *i* is correct, while *ii* is incorrect

C. *i* is incorrect, while *ii* is correct

D. Both *i* and *ii* are incorrect

**Answer: C**



**Watch Video Solution**

**24.** The conversion of nitrate to nitrogen is called

A. Nitrification

B. Denitrification

C. Ammonification

D. Nitrogen fixation

**Answer: B**



**Watch Video Solution**

**25.** In man, recessive characters like haemophilia are mainly transmitted through

A. Y-chromosome

B. Chromosome number 12

C. X-chromosome

D. Chromosome number 11

**Answer: C**



**Watch Video Solution**

**26.** Sertoli cells are regulated by the pituitary hormone known as

A. GH

B. Prolactin

C. LH

D. FSH

**Answer: D**



**Watch Video Solution**

**27.** The biogeographic region in india having maximum endemism for amphibians is

A. The westerns Ghats

B. The indo-Burma region

C. The himalayan range

D. The gangetic plains

**Answer: A**



**Watch Video Solution**

**28.** Biosphere reserves are different from National Park as

A. Humans are not integral part of biosphere reserve

B. Plants and animals are protected in biosphere reserves

C. Humans are an integral part of the biosphere reserve

D. Only plants are protected in-situ environment

**Answer: C**



**Watch Video Solution**

29. The chemotherapeutic substance derived from living organisms that has an inhibitory effect on parasitic organisms is known as

- A. Exotoxin
- B. Bactericide
- C. Antibody
- D. Antibiotic

**Answer: D**



**Watch Video Solution**



**30.** Phyllode is an adaptation to

A. Heterophytic environment

B. Halophytic environment

C. Mesophytic environment

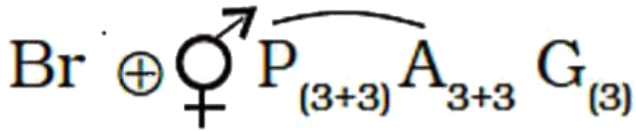
D. Xerophytic environment

**Answer: D**



**Watch Video Solution**

31. Analyze the floral formula given below.



The floral formula corresponding to which of the following?

- A. Croton and Astragalus
- B. Lepidium and Ibaeris
- C. Allium and Asparagus
- D. Vetiveria and Cymbopogon

**Answer: C**



**Watch Video Solution**

**32.** During the propagation of a nerve impulse, the action potential results from the movement of

A.  $K^+$  ions from extracellular fluid to intracellular fluid

B.  $Na^+$  ions from extracellular fluid to intracellular fluid

C.  $K^+$  ions from intracellular fluid to extracellular fluid

D.  $Na^+$  ions from intracellular fluid to extracellular fluid

**Answer: B**



**Watch Video Solution**

**33.** The hardest part of the animal body is

A. Bone

B. Har

C. Dentine

D. Enamel

**Answer: D**



**Watch Video Solution**

**34.** Why is insulin not orally administered to the patient?

A. Insulin is a steroid

B. It is bitter in taste

C. Its activity increases after digestion

D. It will be digested in the stomach and  
will become non-functional

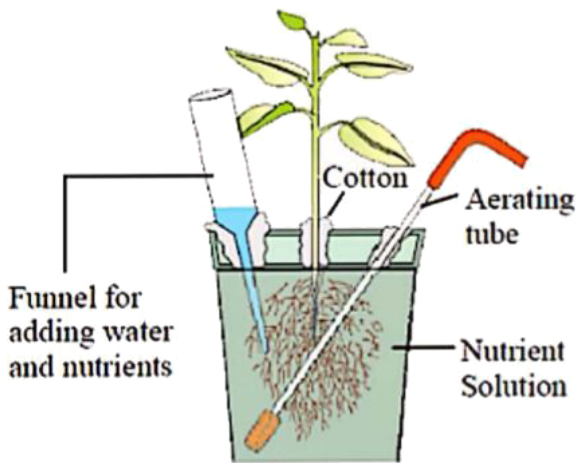
**Answer: D**



**Watch Video Solution**

**35.** Below diagram showing a technique for the culture of plants. This technique has been successfully employed for the production of

which of the following?



A. Tomato, apple, guava and Fig

B. Cucumber, Potato and Banyan

C. Cucumber, Lettuce and Tomato

D. Lettuce, apple, Potato and Mango

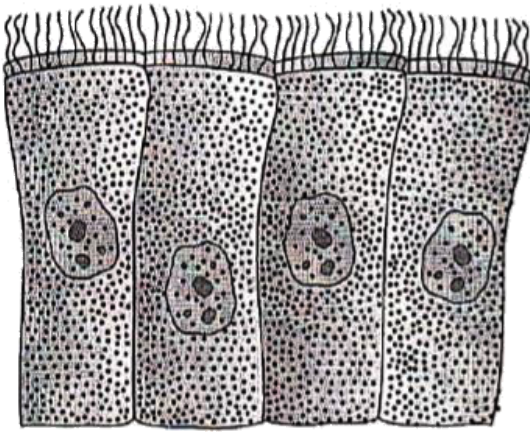
**Answer: C**



**Watch Video Solution**

**36.** Identify the given epithelium in the diagram with its correct location





	Epithelium	Location
a)	Ciliated columnar	Nephron
b)	Ciliated cuboidal	Trachea
c)	Ciliated columnar	Fallopian tube
d)	Compound	Skin

- A. Epithelium                      Location  
 Ciliated columnar      Nephron
- B. Epithelium                      Location  
 Ciliated cuboidal      Trachea
- C. Epithelium                      Location  
 Ciliated columnar      Fallopian tube

	Epithelium	Location
D.	Compound	Skin

**Answer: C**



**Watch Video Solution**

**37.** In a standard ECG which one of the following alphabets is the correct representation of the respective activity of the human heart ?

A. S-start of systole

B. T-end of diastole

C. P-depolarisation of the atria

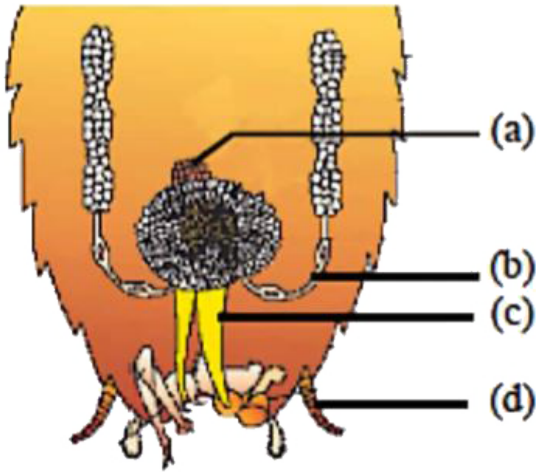
D. R-repolarisation of ventricles

**Answer: C**



**Watch Video Solution**

**38.** Consider the diagram below and label the structures (a-d).



A.

a	b	c	d
Collateral gland	Vas deferens	Ejaculatory duct	Anal cercus

B.

a	b	c	d
Phallic gland	Vas deferens	Ejaculatory duct	Anal cercus

C.

a	b	c	d
Phallic gland	Ejaculatory deferens	Vas duct	Caudal style

D.

a	b	c	d
Phallic gland	Vas deferens	Ejaculatory duct	Titillator

**Answer: B**



Watch Video Solution

39. A jawless fish which lays eggs in fresh water and whose ammocoete larve after metamorphosis return to ocean is

A. Rohu

B. Neomyxine

C. Petromyzon

D. Eptatretus

**Answer: C**



[Watch Video Solution](#)

**40.** Afferent nerve fibres carry impulses from

- A. Effector organs to CNS
- B. Receptors of CNS
- C. CNS to receptors
- D. CNS to muscles

**Answer: B**



[Watch Video Solution](#)

41. Water potential is equal to

A.  $\Psi_S + O. P.$

B.  $\Psi_S + T. P.$

C.  $\Psi_P + \Psi_W$

D.  $\Psi_S + \Psi_P$

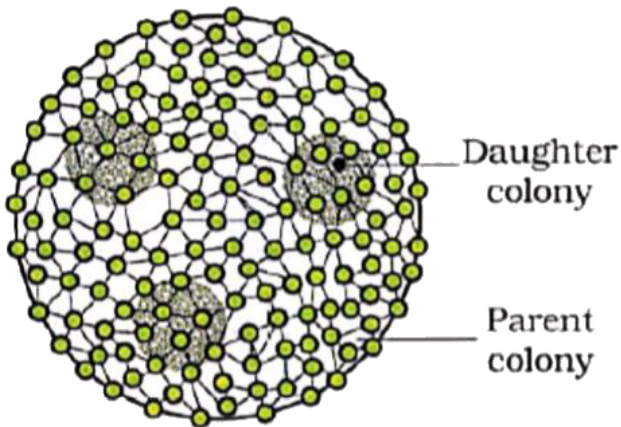
**Answer: D**



**Watch Video Solution**

42. The organism shown in the given diagram

is



A. Spirogyra

B. Ulothrix

C. Oscillatoria

D. Volvox



**Answer: D**



**Watch Video Solution**

**43.** Which of the following STIs are not completely curable ?

A. Genital herpes

B. Hepatitis-B

C. AIDS

D. All of these

**Answer: D**



**Watch Video Solution**

**44. Which was the biggest land dinosaur ?**

A. Stegosaurus

B. Tyrannosaurus

C. Brachiosaurus

D. Triceraptops

**Answer: B**



Watch Video Solution

45. Synaptonemal complex is formed during

A. Pachytene

B. Zygotene

C. Leptotene

D. Diplotene

**Answer: B**



Watch Video Solution

**46.** Why is carbon monoxide (CO) poisonous for man?

A. It affects the nerves of the lungs.

B. It affects the diaphragm and intercostal muscles.

C. It reacts with the oxygen-reducing percentage of oxygen in the air.

D. haemoglobin combines with carbon monoxide instead of oxygen and the

produce cannot dissociate.

**Answer: D**



**Watch Video Solution**

**47.** Organisms which can tolerate and thrive in wide range of temperature are called

A. Stenothermal

B. Homeotherms

C. Poikilotherms

D. Eurythermal

**Answer: D**



**Watch Video Solution**

**48.** A person suffering from cancer is treated with radiotherapy. Which of the following techniques is used in this treatment?

A. All tumour cells and surroundings normal cells get killed.

B. It is meant to cure damaged DNA

C. radiations activated p53 gene of tumour  
cell

D. tumour cells are irradiated lethally

**Answer: D**



**Watch Video Solution**

**49.** An example of gene therapy is

A. Production of injectable hepatitis B vaccine

B. Production of vaccines in food crops like potatoes which can be eaten

C. Introduction of the gene for adenosine deaminase in persons suffering from severe combined immunodeficiency (SCID)

D. Production of test-tube babies by artificial insemination and implantation



of fertilized eggs

**Answer: C**



**Watch Video Solution**

**50.** Which is incorrect regarding Hisardale?

- A. It is developed through cross-breeding.
- B. It is a hybrid breed
- C. It is a milch breed.
- D. It is a high wool-producing crossbreed.

**Answer: C**



**Watch Video Solution**

**51.** Grave's disease is characterised by the following, except

- A. Deposition of fats in eye sockets
- B. Enlargement of thyroid gland
- C. Weight loss
- D. Weigh gain

**Answer: D**



**Watch Video Solution**

**52.** Which one of following is complex V of the ETS of inner mitochondrial membrane?

- A. NADH Dehydrogenase
- B. Cytochrome oxidase
- C. Ubiquinone
- D. ATP synthase

**Answer: D**



**Watch Video Solution**

**53.** Which combination of gases is suitable for fruit ripening

A.  $CO_2$  and  $C_2H_6$

B.  $CH_4$  and  $CO_2$

C.  $CO_2$  and  $O_2$

D.  $C_2H_4$  and  $CO_2$

**Answer: D**



**Watch Video Solution**

**54.** Which one of the following is a matching pair of certain organism(s) and the kind of association?

A. Sea anemone and clownfish-

commensalism

B. Red algae and fungi in lichens-

mutualism

C. orchids growing on trees-parasitism

D. Cuscuta (dodder) growing on other  
flowering plants-Epiphytism

**Answer: A**



**Watch Video Solution**

**55.** The correct sequence of reactions in Krebs cycle is:

A. Isocitric acid  $\rightarrow$   $\alpha$  - ketoglutaric acid

$\rightarrow$  oxalosuccinic acid

B. Isocitric acid  $\rightarrow$  oxalosuccinic acid  $\rightarrow$   $\alpha$

-ketoglutaric acid

C. Oxalosuccinic acid  $\rightarrow$  citric acid  $\rightarrow$   $\alpha$ -

ketoglutaric acid

D.  $\alpha$ -ketoglutaric acid  $\rightarrow$  isocitric acid

**Answer: B**



**Watch Video Solution**

56. The process of spermiogenesis involves all of the following, except

A. Formation of mitochondrial sheath

B. Formation of proximal and distal centrioles

C. Formation of acrosomes

D. Shortening of sperm

**Answer: D**



**Watch Video Solution**



57. What is common between vegetative reproduction and Apomixis

A. Both are a sexual method of reproduction

B. Both produce progeny identical to the parent

C. Both are applicable to only dicot plants

D. Both bypass the flowering plant

**Answer: B**



**58.** Protists are:

1. Unicellular and prokaryote
2. Unicellular and eukaryote
3. Multicellular and eukaryote
4. Autotroph and heterotroph

A. 1,2 and 3

B. 2,3 and 4

C. 3 and 4

D. 2 and 4

**Answer: D**



**Watch Video Solution**

**59.** Which of the following are surface structures of a prokaryotic cell, but does not facilitate motility?

A. Pili

B. Flagella

C. Fimbriae

D. Both (A) and (C)

**Answer: D**



**Watch Video Solution**

**60.** Which of the following types of bacteria were used in Griffith's transformation experiment?

- A. Diplococcus, R-III and S-II type
- B. Pneumococcus,  $T_2$  phase
- C. Streptococcus, R-II and S-III type
- D. Diplococcus, E. coli

**Answer: C**



**Watch Video Solution**

**61.** Read the different components from (A) to (D) in the list given below and tell the correct order of the components with reference to their arrangement from outer side to inner side in a woody dicot stem

(A) Secondary cortex , (B) Wood

(C) Secondary phloem , (D) Pith

A. (i),(ii),(iv),(iii)

B. (iv),(i),(iii),(ii)

C. (iv),(iii),(i),(ii)

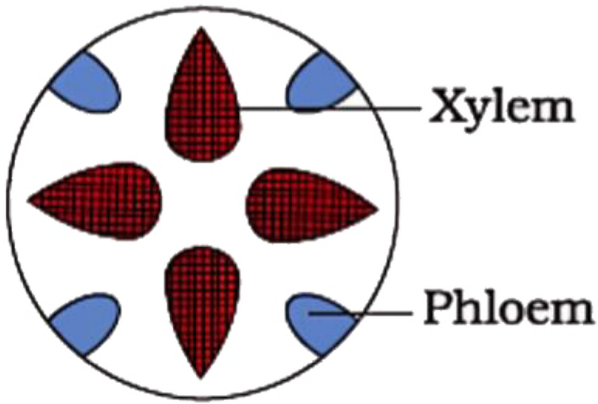
D. (iii),(iv),(ii),(i)

**Answer: B**



**Watch Video Solution**

**62.** Which type of arrangement is shown by the vascular bundle in the given diagram?



- A. Open vascular bundles
- B. Closed vascular bundles
- C. Conjoint vascular bundles
- D. Radial vascular bundles

**Answer: D**



**Watch Video Solution**

**63.** Select the correct statements with respect to poultry farm management.

A. The word poultry is often used to refer to the meat of only birds.

B. They typically include chicken and ducks, and sometimes turkey and geese.

C. Leghorn is an improved breed of chicken

D. All of these



**Answer: D**



**Watch Video Solution**

**64.** Which one is the cofactor of carboxypeptidase?

A. Iron

B. Zinc

C. Copper

D. Magnesium

**Answer: B**



**Watch Video Solution**

**65.** which of the following forms the pioneer community in hydrarch succession?

A. Wolffia

B. Phytoplankton

C. Lichen

D. Submerged free-floating plants

**Answer: B**



**Watch Video Solution**

**66.** The egrets always forage close to where the cattle are grazing. The interaction between them can be called

A. Brood Parasitism

B. Parasitism

C. Mutualism

D. Commensalism

**Answer: D**



**Watch Video Solution**

**67.** Each of the following statements concerning the seminiferous epithelium is true except.

A. Before puberty, it contains spermatids

B. It consists of sertoli cells and spermatogenic cells

C. It has a robust basement membrane

D. Its basal compartment contains spermatogonia

**Answer: A**



**Watch Video Solution**

**68.** Find the mismatched pair.

A. Physical barriers-mucus coating of the epithelium lining the gastrointestinal tracts.

B. Physiological barriers-acid in the stomach

C. Cellular barriers-PMNL-neutrophils

D. Cytokine barriers-saliva in mouth

**Answer: D**



**Watch Video Solution**

**69.** How many of the daughter cells obtained from a megaspore mother cell result in the formation of monosporic embryo sac?

A. Four

B. Three

C. Two

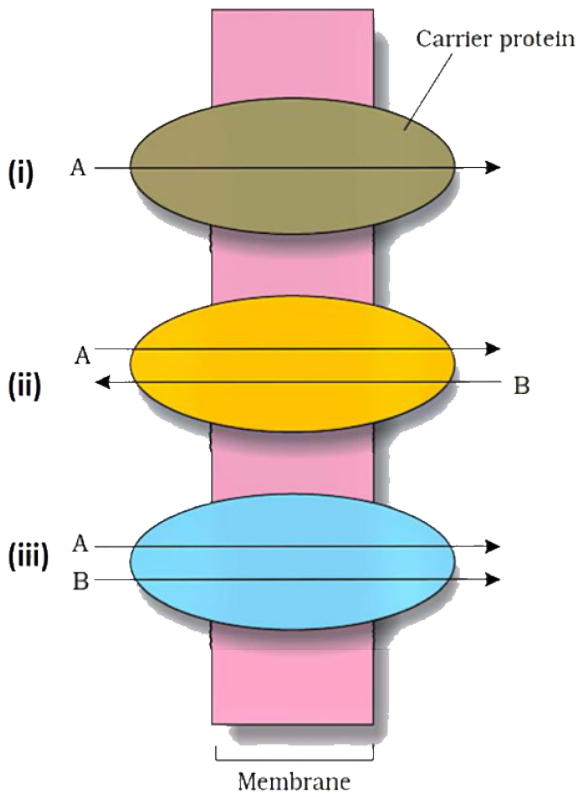
D. One

**Answer: D**



**Watch Video Solution**

**70.** Identify the type of transport labelled (i), (ii) and (iii) in the diagram given below:



A.

(i)	(ii)	(iii)
Passive	Active	Facilitated

B.

(i)	(ii)	(iii)
Symport	Antiport	Uniport

C.

(i)	(ii)	(iii)
Uniport	Antiport	Symport



D.

(i)	(ii)	(iii)
Uniport	Symport	Antiport

**Answer: C**



**Watch Video Solution**

71. The mode of excretion in which animal excrete urea as major excretory waste is called

A. Ureotelism

B. Uricotelism

C. Ammonotelism

D. Aminotelism

**Answer: A**



**Watch Video Solution**

**72.** Industrial melanism is an example of

A. Protective resemblance with the surroundings

B. Defensive adaptation of skin against ultraviolet radiations

C. Drug resistance

D. Artificial selection

**Answer: A**



**Watch Video Solution**

**73.** Which of the following is correctly matched?

A. pbR322-Enzyme

B. Ligase-Molecular glue

C. Agrobacterium-Production of insulin

D. EcoRI-Plamid vector

**Answer: B**



**Watch Video Solution**

**74.** The part of nephron involved in active reabsorption of sodium is

A. Distal convoluted tubule

B. Proximal convoluted tubule

C. Bowman's capsule

D. Descending limb of Henle's loop

**Answer: A**



**Watch Video Solution**

**75.** The serial arrangement of taxon/taxonomic category is known as

A. Category

B. Classification

C. Hierarchy

D. Taxonomy

**Answer: C**



**Watch Video Solution**

**76.** The pro-hormone insulin is processed to become a fully mature and functional insulin hormone by removal of

A. C peptide

B. A peptide

C. B peptide

D. Both (A) and (B)

**Answer: A**



**Watch Video Solution**

77. The green alga used by T.W Engelmann in his prism experiment is

A. Chlorella

B. Spirogyra

C. Cladophora

D. Ulothrix

**Answer: C**



**Watch Video Solution**

**78.** Which of the following does not match?

A. Pancreas-Largest exocrine gland

B. Antigen-Antibody



C. Thyroid-Goitre

D. Enzyme-Substrate

**Answer: A**



**Watch Video Solution**

**79.** In five kingdom classification, ascomycetes are included in

A. Monera

B. Protista

C. Animalia

D. Fungi

**Answer: D**



**Watch Video Solution**

**80.** Apical dominance in higher plants is due to

A. Auxin

B. Gibberellins

C. Ethylene

D. ABA

**Answer: A**



**Watch Video Solution**

**81.** Regeneration of a plant cell to give rise to new plant is called:

A. Reproduction

B. Budding

C. Totipotency

## D. Pleuripotency

**Answer: C**



**Watch Video Solution**

**82.** The end of juvenile phase marks the beginning of

A. Vegetative phase

B. Reproductive phase

C. Senescence

## D. Ageing

**Answer: B**



**Watch Video Solution**

**83.** Each testicular lobule contains \_\_\_ convoluted seminiferous tubules.

A. 1 to 3

B. 5 to 7

C. 8 to 10

D. 11 to 14

**Answer: A**



**Watch Video Solution**

**84.** Maximum bioconcentration of pesticide residue is usually found in birds that exclusively feed on:

A. Fish

B. Seeds

C. Worms

D. Meat

**Answer: A**



**Watch Video Solution**

**85.** Which one of the following groups of three animals is correctly matched with their one characteristic morphological feature?

A. Columba, Equus, and Balaenoptera-

Dorsal hollow nerve cord and

poikilothermous

B. Pteropus, Pavo, Macropus and Psittacula-

4 chambered heart and homeothermy

C. Ascaris, Wuchereria and Pheretima-

Pseudocoelomates and metamerism

D. Dentalium, octopus, apis, and bombyx-

open circulatory system and dorsal

nerve cord



**Answer: B**



**Watch Video Solution**

**86.** Find the correct pair.

- A. Arthritis-Decreased bone mass
- B. Diabetes mellitus-Deficiency of ADH
- C. Angina pectoris-acute chest pain
- D. Emphysema-Inflammation of bronchi

**Answer: C**



Watch Video Solution

87. Antherozoids of both funaria and pteris were released together near the archegonia of pteris. Only its sperms enter the archegonia as

A. Pteris archegonia repel funaria sperms

B. Funaria sperms get killed by pteris sperms

C. Funaria sperms are less mobile

D. Pteris achegonia release chemical to attract its pserms

**Answer: D**



**Watch Video Solution**

**88.** The gynocium may have more than one pistil. Such a condition is called

A. Monocarpellary

B. Apocarpous

C. Syncarpous

D. Multicarpellary

**Answer: D**



**Watch Video Solution**

**89.** Select the incorrect statement.

A. Large holes in Swiss cheese are due to production of a large amount of  $CO_2$

B. Protease and pectinase is used to clarify the bottles juices

C. Penicillin was discovered by florey

D. In mycorrhiza, the fungi help in the absorption of nutrients

**Answer: C**



**Watch Video Solution**

**90. Which one is polymer?**

A. Sucrose

B. Glycogen

C. Fructose

D. Lactose

**Answer: B**



**Watch Video Solution**