



BIOLOGY

BOOKS - NTA MOCK TESTS

NEET MOCK TEST 18

Biology

1. Asexual reproduction in sponges occurs by

- A. Parthenogenesis
- B. Budding
- C. Fragmentation
- D. Spores

Answer: C



Watch Video Solution

2. The development of male gametophyte in angiosperms is

- A. Partly in-situ in anther and partly ex-situ on stigma.
- B. Fully in-situ in anther
- C. Fully Ex-situ on stigma
- D. In-vitro only

Answer: A



Watch Video Solution

3. Which of the following is the correct description of follicular phase of menstrual cycle?

- A. Primary follicles in the ovary grow to become a fully mature Graafian follicle and simultaneously and endometrium of uterus

regenerates through proliferation.

B. The corpus luteum secretes large amounts of progesterone which is essential for maintenance of the endometrium

C. Both LH and FSH attain a peak level about 10th day leading to rupture of Graafin follicle.

D. These change in the ovary and the uterus and induced by changes in the levels of adrenal gland.

Answer: A



[Watch Video Solution](#)

4. A total of 512 seeds are collected from the cross between $AaBb \times AaBb$. Find the number of plants produced with the genotype $Aabb$ and $Aabb$.

A. 35

B. 350

C. 96

D. 285

Answer: C



Watch Video Solution

5. Modern Homo sapiens arose during ice age between

A. 15,000 - 5000 years ago

B. 5 million years ago

C. 15 million years ago

D. 75,000 - 10,000 years ago

Answer: D



Watch Video Solution

6. A. The conditions primitive on earth (before the origin of life) were : low temperature, volcanic storms, reducing atmosphere containing Ch_4 , NH_3 , etc.

B. Cheetah and humans share similarities in the pattern of bones of forelimbs.

C. In a collection of moths made in the 1850s i.e., before industrialization set in, it was observed that there were more dark-winged moths on trees than white-winged moths.

D. Branching descent and natural selection are the two key concepts of Darwinian theory of evolution.

E. The Neanderthal man with a brain size of 1400 cc lived in east and central Asia 25,000-10,000 years ago.

Which set of given statements are correct ?

A. A , B, E

B. B,D

C. A,C,E

D. B,C,D

Answer: B



Watch Video Solution

7. Select the incorrect information given regarding ascariasis.

- A. Common name of causative agent: Round worm
- B. Organ in which adult pathogen is found-Colon
- C. Symptoms: Internal bleeding, muscular pain, fever anemia and blockage of the intestinal passage.
- D. Mode of infection: Contaminated soil, water and plants.

Answer: B



Watch Video Solution

8. Fishery is an industry devoted to the catching, processing or selling of fish, shellfish or other aquatic animals. Some of the very common

freshwater fishes include

- A. Catla, rohu and common carp
- B. Hilsa, common carp and pomfrets
- C. Catla, rohu and sardine
- D. Hilsa, sardines , mackerel and pomfrets

Answer: A



[Watch Video Solution](#)

9. In biolistic method of gene transfer, the microparticles coated with foreign DNA are bombarded into target cells at a very high velocity. These microparticles are made up of

- A. silver or tungsten
- B. Arsenic or silver
- C. Gold or tungsten

D. None of these

Answer: C



[Watch Video Solution](#)

10. The number of death and birth in the last stage of sigmoid growth curve of a population will be

- A. Similar to lag phase
- B. Unequal with more deaths
- C. Unequal with less deaths
- D. Equal

Answer: D



[Watch Video Solution](#)

11. Which of the following is correct regarding the ecosystem?

- A. There is cyclic exchange of materials between living beings and environment.
- B. The flow of energy is unidirectional
- C. It is a self-regulating unit
- D. All of these

Answer: D



Watch Video Solution

12. Select the incorrect match from the following:

- A. *Musca domestica* : Diptera (Order)
- B. *Mangifera indica*: Anacardiaceae (Family)
- C. *Solanum melogena*: Polymoniales (Order)

D. Panthera tigris-Canidae(Family)

Answer: D



[Watch Video Solution](#)

13. Which one of the following statements about viruses is correct?

A. Viruses possess their own metabolic system

B. Viruses contain either DNA or RNA

C. Viruses are facultative parasites

D. Viruses are readily killed by antibodies

Answer: B



[Watch Video Solution](#)

14. Excretory system is absent in

A. Echinodermata

B. Mollusca

C. Annelids

D. Arthropods

Answer: A

 [Watch Video Solution](#)

15. In the given table, each phylum is paired with a set of characters. Select the option with an incorrect set of information about the given phyla of animals.

I. Echinodermata	P - Radula for feeding; Q - Water vascular system
II. Aschelminthes	R - Complete alimentary canal with muscular pharynx; S - Internal fertilization
III. Ctenophora	T - Internal fertilization; U - Sexual reproduction only

A. R,S,T

B. P,T

C. P,S,T

D. P,Q,U

Answer: B



[Watch Video Solution](#)

16. In cymose inflorescence

A. Main axis terminates in a flower

B. Main axis is of indefinite growth

C. Flower are borne in basipetal order

D. Both [a] and [c]

Answer: D



[Watch Video Solution](#)

17. As a tree grows very old, which of the following increases more rapidly in thickness?

- A. Cortex
- B. Heartwood
- C. Phloem
- D. Pericycle

Answer: B



[Watch Video Solution](#)

18. The transverse section of a plant material shows the following anatomical features, (a) the vascular bundles are conjoint, scattered and surrounded by clerenchymatous undule sheaths (b) phloem parenchyma is absent. What will you identify it as?

A. Dicot stem

B. Monocot stem

C. Dicot root

D. Monocot root

Answer: B



[Watch Video Solution](#)

19. *Periplaneta americana* is a very common species of cockroach. It is

A. Ureotelic

B. Uricotelic

C. Ammonotelic

D. Guanotelic

Answer: B



[Watch Video Solution](#)

20. Read the following statements.

A. Cartilage is present in between atlas and axis.

B. In epithelium, cells are compactly arranged with the little intercellular matrix.

C. The simple epithemlium consists of a two or more layer of cells.

How many of the above statement are incorrect ?

A. None

B. One

C. Two

D. All

Answer: C



Watch Video Solution

21. Which of the following cell organelles are involved in the manufacturing of various substances?

- A. Lysosome, Vacuole, Ribosome
- B. Ribosomes, RER, SER
- C. Vacuole, RER, SER
- D. SER, Ribosome, Centriole

Answer: B



[Watch Video Solution](#)

22. Select the incorrect statement.

- A. Lipid are insoluble in water
- B. Glycerol is trihydroxy propane
- C. Lecithin is a glycoprotein
- D. Adenosine is a nucleoside

Answer: C

 [Watch Video Solution](#)

23. The X-shaped structures formed during the largest stage of meiosis-I are called

- A. Bivalent
- B. Chiasmata
- C. Cross-overs
- D. More than one option is correct

Answer: B

 [Watch Video Solution](#)

24. Transpiration has more than one purpose. Which of the following is not the purpose of transpiration?

- A. Creates transpiration pull for absorption and transport in plants.
- B. Cools leaf surfaces by evaporative cooling
- C. Transports minerals from the soil to all parts of the plant.
- D. Gives high tensile strength to water column present in xylem.

Answer: D

 [Watch Video Solution](#)

25. Manganese toxicity causes:

- A. Reduces uptake of magnesium and iron
- B. Inhibit translocation of Ca^{2+}
- C. Yellow spots surrounding chlorotic veins
- D. Both (a) and (b)

Answer: D

 [Watch Video Solution](#)

26. Effectiveness of different wavelength of light on photosynthesis is measured by

- A. Quantum yield
- B. Quantum requirement
- C. Absorption spectrum
- D. Fluorescence

Answer: C



[Watch Video Solution](#)

27. Number of oxygen atoms required for oxidation of $2NADH_2$ molecules in ETS is

- A. 1
- B. 2

C. 3

D. 4

Answer: B



[Watch Video Solution](#)

28. Arithmetic growth curve is represented by which of the following equation?

A. $w_t = w_0 e^{rt}$

B. $L_0 = L_t + rt$

C. $L_t = L_0 + rt$

D. $2L_t = L_0 - rt$

Answer: C



[Watch Video Solution](#)

29. Which of the following disease is the result of the reflex action of medulla oblongata?

- A. Indigestion
- B. Vomiting
- C. Constipation
- D. Diarrhoea

Answer: B



[Watch Video Solution](#)

30. Which of the following is most suitable description for trachea?

- A. Straight tube, extending upto the mid-thoracic cavity and divides at the level of 5th thoracic vertebra.
- B. Straight tube, extending upto the mid-thoracic cavity and divides at the level of 3rd thoracic vertebra.

C. Straight tube, extending upto the neck and divides at the level of

5th cervical vertebra

D. Curved tube, extending upto the mid-thoracic cavity and divides at

the level of 5th thoracic vertebra.

Answer: A



Watch Video Solution

31. In which disease does a symptom of acute chest pain appear due to enough oxygen not reaching the muscle ?

A. Angina pectoris

B. Atherosclerosis

C. Arteriosclerosis

D. Hypertension

Answer: A

32. Read the following statements about the excretory system in humans:

I. A fall in GFR can activate the JG cells to release renin.

II. ADH can also affect the kidney function by its constrictory effects on blood vessels.

III. The proximity between the Henle's loop and vasa recta, as well as the counter-current in them help in maintaining an increasing osmolarity towards the outer medullary interstitium.

IV Our lungs remove large amounts of CO_2 (108 litres/day).

V. Renal calculi are the stone or insoluble mass of crystallised salts like oxalates within the kidney.

How many of these are correct?

A. None

B. One

C. Two

D. Three

Answer: C



Watch Video Solution

33. Which of the following organs is not a part of the limbic system?

- A. Amygdala
- B. Hippocampus
- C. Inner pars of cerebral hemispheres
- D. Cerebellum

Answer: D



Watch Video Solution

34. Which of the following is not the function of parathormone (PTH)?

- A. Increases calcium level in blood

- B. Decreases the reabsorption of calcium from the renal tubules
- C. increases the calcium absorption from GIT
- D. Decreases the movement of calcium to bones.

Answer: B



[Watch Video Solution](#)

35. Which of the following sets of elements delays flowering if their concentration in plants is low?

- A. N, K, Mg , S
- B. N , S, P
- C. Ca, Mg , Cu
- D. N, S, Mo

Answer: D



[Watch Video Solution](#)

36. The part of large intestine which appears as a blind sac and harbours some microorganisms is called :

- A. Caecum
- B. Vermiform appendix
- C. Colon
- D. Rectum

Answer: A

 [Watch Video Solution](#)

37. Match the columns with their respective matches.

Column I	Column II
P. Inspiratory Capacity	I. ERV + RV
Q. Expiratory Capacity	II. TV + ERV
R. Functional Residual Capacity	III. ERV + TV + IRV
S. Vital Capacity	IV. TV + IRV

A. P-III, Q-II, R-IV, S-I

B. P-IV, Q-I, R-III, S-II

C. P-III, Q-IV, R-I, S-II

D. P-IV, Q-II, R-I, S-III

Answer: D



[Watch Video Solution](#)

38. Citrus canker is a

A. Bacterial disease

B. Fungal disease

C. Viral disease

D. Prion disease

Answer: A



[Watch Video Solution](#)

39. Which of the following is correct about non-living objects?

- A. Doesn't grow
- B. Show intrinsic growth
- C. Show extrinsic growth
- D. Show both extrinsic and intrinsic growth

Answer: C



[Watch Video Solution](#)

40. Respiratory organs like gills, book gills, book lungs or tracheal system are found in phylum

- A. Arthropoda
- B. Aschelminthes
- C. Mollusca

D. Chordata

Answer: A



Watch Video Solution

41. Nissl's granules are located in

A. Cyton and Dendrites

B. Dendrites and Axon

C. Axon and Cyton

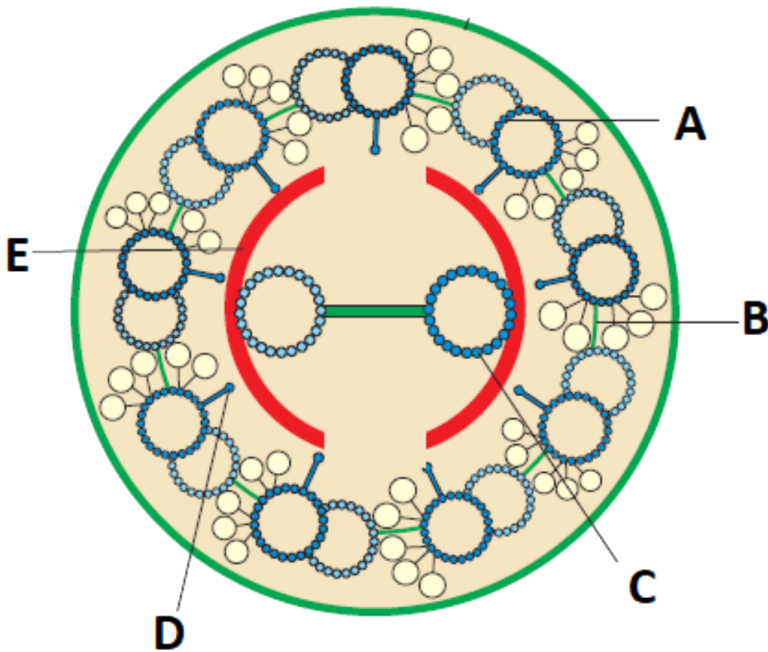
D. Axon and Axon terminal

Answer: A



Watch Video Solution

42. Identify parts labeled A - E in the given figure.



A.

A

Peripheral microtubules

B

Interdoublet bridge

C

Central microtubule

B.

A

Peripheral microtubules

B

Intertriplet bridge

C

Central microtubule

C.

A

Peripheral microtubules

B

Interdoublet bridge

C

Central microtubule

D.

A

B

C

Peripheral microtubules Intertriplet bridge Central microtubule

Answer: C



Watch Video Solution

43. Water constitutes _____% of the total cellular mass.

A. 10

B. 30

C. 50

D. 90

Answer: D



Watch Video Solution

44. In mitosis, the centromeres split and chromatids separate during :

A. Metaphase

B. Anaphase

C. Prophase

D. Telophase

Answer: B



[Watch Video Solution](#)

45. A particular mineral element P activates various enzymes, especially nitrate reductase, Identify P.

A. Cu

B. Mo

C. Mg

D. Mn

Answer: B



Watch Video Solution

46. The serum has all of the following except

- A. Ions
- B. Glucose
- C. Clotting factors
- D. Amino acids

Answer: C



Watch Video Solution

47. Which of the following is not a part of renal tubules?

- A. Glomerulus

B. PCT

C. DCT

D. Loop of Henle

Answer: A



[Watch Video Solution](#)

48. Photosynthesis is a

A. Physico-chemical process

B. Physical process

C. Chemical process

D. Catabolic process

Answer: A



[Watch Video Solution](#)

49. In males, FSH stimulates

- A. Sertoli cells
- B. Spermatogonia
- C. Interstitial cells
- D. cells of ejaculatory duct

Answer: A



Watch Video Solution

50. Milk yield is primarily dependent on

- A. Quality of breed
- B. Absence of disease
- C. Quantity of roughage given to animal
- D. Quantity of concentrate given to animal

Answer: A



Watch Video Solution

51. The number of chloroplast in chlamydomonas is _ _ _ _ _ and in a mesophyll cell, it ranges between _ _ _ _ _.

- A. 1, 2 - 4
- B. 2, 20 - 40
- C. 20 - 40, 1
- D. 1, 20 - 40

Answer: D



Watch Video Solution

52. Different cells have different sizes. Arrange the following cells in an ascending of their size and select the correct option.

(i) Mycoplasma (ii) Ostrich egg

(iii) Human RBCs (iv) Bacteria

A. (i) → (iv) → (iii) → (ii)

B. (i) → (iii) → (iv) → (ii)

C. (ii) → (i) → (iii) → (iv)

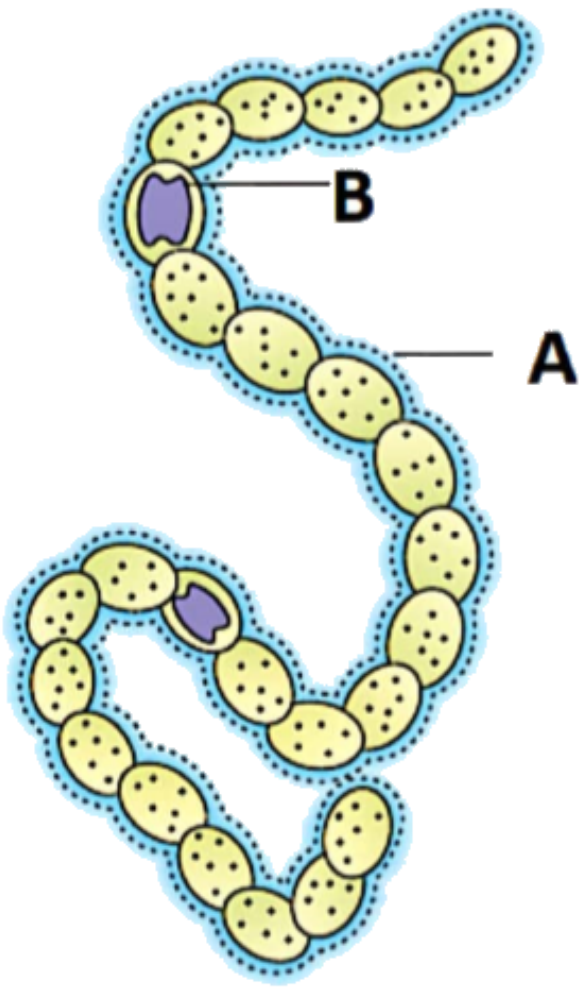
D. (iii) → (ii) → (i) → (iv)

Answer: A



Watch Video Solution

53. Identify parts labeled *A* and *B* in the given diagram and select the correct option.



A. Anabaena-A: Heterocyst, B-Mucilagenous sheath

B. Nostoc - A: Hetercyst, B - Mucilagenous sheath

C. Azonspirillum - A: Mucilagenous sheath, B : - Heterocyst

D. Anabaena-A: Mucilagenous sheath, B : - Heterocyst

Answer: D



Watch Video Solution

54. Identify the correct option:

Biological Name	Family	Order	Class
Mangifera indica	<i>A</i>	<i>B</i>	<i>C</i>
Triticum aestivum	<i>D</i>	<i>E</i>	<i>F</i>

A. A-Anacardiaceae, B-Sapindales, C- Monocotyledonae, D-Poaceae, E-

Poales, F- Dicotyledonae

B. A-Anacardiaceae, B-Sapindales, C- Dicotyledonae, D-Poaceae, E-

Poales, F- Monocotyledonae

C. A-Poaceae, B-Sapindales, C- Dicotyledonae, D-Anacardiaceae, E-

Poales, F- Monocotyledonae

D. A-Anacardiaceae, B-Poales, C- Dicotyledonae, D-Poaceae, E-

Sapindales, F- Monocotyledonae

Answer: B



[Watch Video Solution](#)

55. Identify the incorrect pair.

- A. Trypanosoma - protozoan
- B. Plankton-Float passively
- C. Gonyaulax - Chitinous cell wall
- D. Slime moulds - Saprophytic protists

Answer: C



[Watch Video Solution](#)

56. Identify the mismatch among the following.

- A. Reptiles - Cleidoic eggs
- B. Amphibians- Epidermal scales
- C. Mammals - Corpus callosum

D. Aves - Pneumatic bones

Answer: B



[Watch Video Solution](#)

57. What set of characters belongs to the same phylum?

- A. First true coelomates and nephridia as the excretory structures.
- B. Pseudocoelomates and flame cells as the excretory structures
- C. Acoelomates and metanephridia cells as the excretory structures
- D. Eucoelomates and flame cells as the excretory structures.

Answer: A



[Watch Video Solution](#)

58. How many of the following statements are not correct?

[I] In a flowering plant the substances that would need to be transported are water, mineral nutrients, organic nutrients and plant growth regulators.

[II] Over small distances, substances move by diffusion and by cytoplasmic streaming supplemented only by passive transport.

[III] Organic and mineral nutrients undergo multidirectional transport through the xylem.

[IV] From the storage organs, organic compounds are later re-exported.

[V] Phytohormones and other chemical signals are transported to maintain and regulate the plant functions.

A. Two

B. Three

C. Four

D. Five

Answer: A

59. Mark out the number of incorrect statement/s:

[I] Some essential elements can alter the osmotic potential of a cell.

[II] Nitrogen is required by the meristematic tissue and the metabolically active cells only.

[III] Mg^{2+} is needed by several respiratory enzymes.

[IV] Mo is essential for the water-splitting reaction in photosynthesis, a reaction that leads to oxygen evolution.

[V] Sulphur is the main constituent of several coenzymes, vitamins (thiamine, biotin, coenzyme-A) and ferredoxin.

A. Two

B. Three

C. Four

D. Five

Answer: A

60. Which of the following are the structural and functional units of liver?

- A. Hepatic peritoneum
- B. Hepatic lobules
- C. Ligamentum teres
- D. Falciform ligament

Answer: B

 Watch Video Solution

61. The most notable diseases caused by prions are A _____ commonly called B _____ in cattle and its analogous variant C _____ in humans.

- A. A - Cr- Jacob disease, B - Mad cow disease, C - Bovine spongiform encephalopathy

B. A - Bovine spongiform encephalopathy, B - Mad cow diseases, C -

PSTV d

C. A - Bovine spongiform encephalopathy, B - Mad cow diseases, C - Cr-

Jacob disease

D. A - Cr- Jacob disease, B - Mad cow disease, C - PSTV d

Answer: C



Watch Video Solution

62. Select the incorrect statement.

A. Jawless fishes have 6-15 pairs of gill slits.

B. Reptiles have three-chambered heart except crocodile and cleidoic
eggs

C. Chordates have a solid dorsal nerve cord & notochord

D. Urochordata and Cephalochordata are often referred to as protochordates.

Answer: C

 [Watch Video Solution](#)

63. Plants with edible roots include:

A. Turnip, Banyan , Asparagus

B. Radish , Carrot , Rhizophora

C. Carrot, Turnip, Maize

D. Carrot, Radish, Sweet potato

Answer: D

 [Watch Video Solution](#)

64. Which of the following is not the feature of cardiac muscle?

- A. Communication junctions are intervertebral disc
- B. They show branching pattern
- C. Stimulation received by one cell is passed to neighbouring cells
- D. They are striated in nature

Answer: A



[Watch Video Solution](#)

65. Which of the following set represent the members of Solanaceae family?

- A. Belladonna, Ashwagandha, Petunia
- B. Datura, Indigofera, Tomato
- C. Brinjal, Chilli, Sunhemp
- D. Potato, Brinjal, Lupin

Answer: A



Watch Video Solution

66. Companion cells are present in the phloem of

- A. Pteriophytes
- B. Gymnosperms
- C. Angiosperms
- D. Both 1 and 2

Answer: C



Watch Video Solution

67. Vision in cockroach is

- A. Internal

- B. External, in the water
- C. external , in the cocoon
- D. Internal , in the cocoon

Answer: A



[Watch Video Solution](#)

68. Vessels differ from tracheids in having

- A. In being living
- B. Presence of perforation plates at both ends
- C. Eucleated condition
- D. All of the above

Answer: B



[Watch Video Solution](#)

69. During muscle contraction, what could be the correct sequence ?

- A. Release of calcium ions into the sarcoplasm.
- B. Release of Acetylcholine.
- C. Sliding of actin filaments over each other.
- D. Break down of ATP to form a cross bridge.

A. A-D-B-C

B. A-B-D-C

C. B-A-C-D

D. B-A-D-C

Answer: D



Watch Video Solution

70. Which of the following is correct about metaphase - I ?

- A. Bivalents are arranged at equator

- B. Univalents are arranged at equator
- C. Non-homologous chromosomes forms pair
- D. Spindle fibers are attached at chromomere

Answer: A



[Watch Video Solution](#)

71. Which of the following is correct about organism develop through parthenogenesis?

- A. They show a 50% similarity to father
- B. They show a 50% similarity to mother
- C. They show a 100% similarity to father
- D. They show a 100% similarity to mother

Answer: D



[Watch Video Solution](#)

72. Which of the following is an important function of cortisol ?

- A. Maintains cardio - vascular system as well as the kidney functions .
- B. Absorption of calcium from gut.
- C. Absorption of water in PCT
- D. Absorption of iron from gut

Answer: A



[Watch Video Solution](#)

73. Angiotensin-II will perform all the following except

- A. Vasoconstriction
- B. Hypernatremia
- C. Increasing GFR
- D. Excretion of Na^+ in urine

Answer: D



Watch Video Solution

74. The human placenta does not secrete which of the following hormone?

- A. Human chorionic gonadotropin (hCG)
- B. Human placental lactogen (hPL)
- C. Androgens
- D. Progestogens

Answer: C



Watch Video Solution

75. Inner layer of male gametophyte in Angiosperm is mainly composed of

A. Polymer of amino acids

B. Polymer of nucleotide

C. Polymer of lipid

D. Polymer of carbohydrate

Answer: D



Watch Video Solution

76. During embryonic development of human, limbs, and digits are formed during

A. First month of pregnancy

B. Second month of pregnancy

C. Third month of pregnancy

D. Seventh month of pregnancy

Answer: B

 [Watch Video Solution](#)

77. Barr body is absent in

- A. Klinefelter's syndrome
- B. Turner's syndrome
- C. Normal female
- D. Down syndrome in female

Answer: B

 [Watch Video Solution](#)

78. The frequency of crossing over between any two linked genes is

- A. Higher if they are recessive
- B. Determined by their relative dominance
- C. The same as if they were not linked

D. Directly proportional to the distance between them

Answer: D



Watch Video Solution

79. Saheli' is a contraceptive drug. Select the incorrect statement about it

A. Oral drug

B. Non-steroidal

C. Once a month pill

D. High contraceptive value

Answer: C



Watch Video Solution

80. Experimental proof of theory of chemical evolution of life was given by

A. Hershey and Chase

B. Oparin and Haldane

C. Urey and Miller

D. Alfred Wallace

Answer: C



Watch Video Solution

81. Biotic potential refers to

A. Increase of population under optimum conditions

B. Increase of population under given conditions

C. Increase of population under natural conditions

D. Increase of population under climatic conditions

Answer: A



Watch Video Solution

82. Which of the following factors may result in introduction of new variations ?

- A. Gene mutation
- B. Genetic recombination
- C. Stabilizing natural selection
- D. Immigration of individuals

Answer: A



Watch Video Solution

83. Identify the correct sequence of stages in the evolution of modern humans.

- I. Neanderthal man
- II. Cro-Magnon man
- III. Australopithecines

IV. Homo habilis

V. Homo erectus

VI Modern human

A. IV, III, V, II, I, VI

B. III,V,IV,II,I,VI

C. III,IV,V,I,II,VI

D. III,IV,V,II,I,VI

Answer: C



Watch Video Solution

84. The female mosquito is the vector for which of the following diseases?

A. Typhoid and Polio

B. Plague and Rabies

C. Common cold and Ringworm

D. Filariasis and Malaria

Answer: D



[Watch Video Solution](#)

85. Which of the following statement is not correct?

- A. Ecosystem is an open system
- B. Ecosystem is self-sustaining and dynamic structure
- C. Sun is the ultimate source of energy for any ecosystem
- D. In an artificial ecosystem flow of energy is not unidirectional

Answer: D



[Watch Video Solution](#)

86. Which of the following is not true about succession?

- A. It is a natural process of change in species structure and community with time
- B. It is a gradual and predictable change
- C. Progressive increase in the amount of living biomass as succession proceeds
- D. Food chain relationship becomes less complex as succession proceeds

Answer: D



[Watch Video Solution](#)

87. Which of the following is an autoimmune disease?

- A. Muscular dystrophy
- B. Gout
- C. Myasthenia gravis

D. Osteoporosis

Answer: C



Watch Video Solution

88. How many of the given statements are not incorrect?

I. The plasmid is autonomously replicating circular extra-chromosomal DNA.

II. Ligase enzyme belongs to a larger class of enzymes called nucleases.

III. DNA fragments are negatively-charged molecules.

IV. E.coli always has genes encoding resistance to antibiotics such as ampicillin and chloramphenicol.

A. One

B. Two

C. Three

D. Four

Answer: B



Watch Video Solution

89. Mark the incorrect pair

- A. Bt cotton - Genes from Agrobacterium
- B. SCID - ADA defucuebcy
- C. Rosie - a lactalbumin
- D. Ely-lily-Humulin

Answer: A



Watch Video Solution

90. Match the column-I with column-II.

	Column-I		Column-II
A	Wheat	I	Pusa Shubhra
B	Cauliflower	II	Pusa Gaurav
C	<i>Brassica</i>	III	Pusa Komal
D	Chilli	IV	Sonalika
		V	Pusa Sadabahar

A. A-IV, B-I, C-II, D-III

B. A-IV, B-III, C-II, D-V

C. A-IV, B-I, C-II, D-V

D. A-III, B-I, C-II, D-IV

Answer: C



Watch Video Solution