



## BIOLOGY

### BOOKS - NTA MOCK TESTS

#### NTA NEET SET 100

#### Biology

1. Fatty liver syndrome is due to excessive intake of

A. tobacco

B. alcohol

C. aspirin

D. morphine

**Answer: B**



**Watch Video Solution**

2. Match the following for PGR and their chemical nature and select the correct option.

|            | Column I        |             | Column II           |
|------------|-----------------|-------------|---------------------|
| A.         | IAA             | <i>i.</i>   | Carotenoids         |
| B.         | Kinetin         | <i>ii.</i>  | Terpenes            |
| C.         | ABA             | <i>iii.</i> | Indole compounds    |
| <i>iv.</i> | GA <sub>3</sub> | <i>iv.</i>  | Adenine derivatives |

A.  $(A - iii), (B - iv)(C - i)(D - ii)$

B.  $(A - i), (B - iii)(C - ii)(D - iv)$

C.  $(A - iv), (B - ii)(C - iii)(D - i)$

$$D. (A - ii), (B - i)(C - iv)(D - iii)$$

**Answer: A**



**Watch Video Solution**

**3. The enzyme present in RBC at higher concentration is**

.....

- A. DNA gyrase
- B. Pepsin
- C. DNA polymerase
- D. Carbonic anhydrase

**Answer: D**



[Watch Video Solution](#)

4. In humans the two different harmful species of

*Mycobacterium* causes

- A. Cholera and Diarrhoea
- B. Pneumoniae and Diphtheria
- C. Tetanus and Plague
- D. Leprosy and Tuberculosis

**Answer: D**



[Watch Video Solution](#)

5. cDNA is synthesised from RNA by the enzyme

- A. RNA dependent RNA polymerase
- B. DNA dependent RNA synthetase
- C. DNA depending DNA convertase
- D. RNA dependent DNA polymerase

**Answer: D**



[Watch Video Solution](#)

6. Which one of the following structures is considered as a secondary lymphoid organ ?

A. Tonsil

B. Payer's patches

C. Appendix

D. All of these

**Answer: D**



**Watch Video Solution**

7. The mRNA codon which codes for the amino acid valine is

A. GUC

B. UGG

C. CCA

D. TTG

**Answer: A**



**Watch Video Solution**

**8.** ELISA is a technique used for early diagnosis of pathogen and is based on

A. using radio labelled second antibody

B. detecting the RBCs

C. complement-mediated cell lysis

D. detecting the antibodies synthesized against the pathogen

**Answer: D**

 [Watch Video Solution](#)

9. The second meiotic division of .....P ..... is unequal and results in the formation of ..... Q .....

Select the appropriate option for P and Q.

- A. P-secondary spermatocytes, Q-spermatids
- B. P-primary oocyte, Q-ovum
- C. P-secondary oocyte, Q-polar body



D. P-primary spermatocytes, Q-spermatids

**Answer: C**



**Watch Video Solution**

**10.** Which of the following bacteria is not a source of restriction endonuclease

- A. Haemophilus influenzae
- B. Escherichia coli
- C. Agrobacterium tumefaciens
- D. Bacillus amyloliquefaciens

**Answer: C**



[Watch Video Solution](#)

11. The trees occupy the top vertical strata of a forest , shrubs the second and herbs and grasses occupy the bottom layers , this represents

A. landifilling

B. productivity

C. stratification

D. all of the above

**Answer: C**



[Watch Video Solution](#)

**12. Select the correct Statement :**

- A. The first movements of foetus and appearance of hairs on the head are usually observed during sixth month of pregnancy.
- B. The mammary glands of the female undergo differentiation before puberty and start producing milk at the end of pregnancy.
- C. Trophoblast cells contain specialised stem cells which have the potency to give rise all the tissue and organs.

D. After implantation , finger-like projection appears on the trophoblast which is surrounded by uterine tissue and meternal blood.

**Answer: D**



**Watch Video Solution**

**13.** Which government Act of India has passed in 1986 to protect and improve the quality of our environment (air, water, and soil)?

A. NEPA (National Environment Protection Act)

B. CPCB (Central pollution control Board)

C. Euro II norms

D. PCP (Prevention and control of pollution Act)

**Answer: A**



**Watch Video Solution**

**14.** Which of the following hotspot not present in India?

A. Western ghat

B. The Himalaya

C. Eastern ghat

D. Indo-Burma

**Answer: C**



**Watch Video Solution**

15. Which of the following process will bring about genetic variation?

- A. Autogamy
- B. Out-crossing
- C. Cross pollination
- D. Both (b) and (c)

**Answer: D**



**Watch Video Solution**

16. Menstrual flow occurs due to lack of

A. oxytocin

B. estrogen

C. progesterone

D. prolactin

**Answer: C**



**Watch Video Solution**

17. Long-distance transport of water , minerals , and food is generally carried out by

A. diffusion only

B. active transport only

C. mass flow system

D. cytoplasmic streaming supplemented by active transport

**Answer: C**



**Watch Video Solution**

**18.** Inbreeding depression is overcome by employing

A. out-crossing

B. interspecific hybridization



C. intarspecific hybridization

D. inbreeding

**Answer: A**



**Watch Video Solution**

**19.** Thalassemia and sickle cell anemia are caused due to a problem in globin molecule synthesis. Select the correct statement

A. Both are due to a quantitative defect in globin chain synthesis

B. Thalassemia is due to less synthesis of globin molecules

C. Sickle cell anemia is due to a quantitative problem of globin molecules

D. Both are due to a qualitative defect in globin chain synthesis

**Answer: B**



**Watch Video Solution**

**20.** The infertility in male due to very low sperm counts in the ejaculates or inability to inseminate the female

partner, can be corrected by:

- A. artificial insemination
- B. intra-uterine insemination
- C. zygote intra Fallopian transfer
- D. both (a) and (b) are used

**Answer: D**



**Watch Video Solution**

**21.** According Robert Constanza, 50 % of the total cost for ecosystem services goes to:

- A. soil formation

B. nutrient cycling

C. recreation

D. climate regulation

**Answer: A**



**Watch Video Solution**

**22. Which of the following is correct for the sterilization technique ?**

A. Surgical method for female only

B. Surgical method for male only

C. Tubectomy in male and vasectomy in female

D. vasectomy in male and tubectomy in female

**Answer: D**



**Watch Video Solution**

**23.** when resources in the habitat are un-limited ?

A. Population grows in an exponential or geometric fashion

B. Impact of natality and mortality becomes zero

C. Biotic potential will be minimum

D. Population always shown Verhulst pearl-logistic growth

**Answer: A**



**Watch Video Solution**

24. The monarch butterfly is highly distasteful to its predator because

- A. a special chemical is present in its body
- B. Cardiac glycosides is stored in its body
- C. it feeds on poisonous weed
- D. both a and b

**Answer: D**



**Watch Video Solution**

**25.** Read the featured given below and select the option for animals which correctly describes the features mentioned:

I. All are exclusively marine, triploblastic, coelomate organism with a water vascular system.

II. A small group of worm-like marine animals with the organ system levels of the organization.

III. The body is covered by a calcareous shell and is unsegmented with a distinct head, muscular foot, and visceral hump.

IV. Triploblastic, pseudocoelomate animals in which alimentary canal is complete with a well developed muscular pharynx.

A. I-Asterias, II-Balanoglossus, III-Ascaris, IV-  
Ancylostoma

B. I-Ascaris, II-Ophiura, III-Pila, IV-Sepia

C. I-Ascaris, II-Saccoglossus, III-Sepia, IV-Ophiura

D. I-Asterias, II-Balanoglossus, III-Pila, IV-Ascaris

**Answer: D**



**Watch Video Solution**

**26.** During the treatment of sewage water, the chemical process is carried out in which step of water treatment?

A. Tertiary



B. Secondary

C. Primary

D. Quaternary

**Answer: A**



**Watch Video Solution**

**27.** Which of the following is true about the chromatids?

A. It is a haploid chromosome

B. It is a complete chromosome

C. It is a duplicate chromosome

D. It is one-half of the replicated chromosome

**Answer: D**



**Watch Video Solution**

28. Which of the following group of animals is homeothermal, has single occipital condyle, 12 pairs of cranial nerves, pneumatic bones, and four-chambered heart ?

A. Pteropus, Macropus, Delphinous

B. Psittacula, Neoprene Columba

C. Calotes, Testudo , Chameleon

D. Hyla, Bufo , Bufo

**Answer: B**



**Watch Video Solution**

29. A process in which the fitness of one species is significantly decreased in the presence of another species is

- A. mutualism
- B. proto-cooperation
- C. competition
- D. commensalism

**Answer: C**



[Watch Video Solution](#)

30. Which of the following systems of classification involves usage of one or few morphological characters for grouping of organisms ?

- A. Artificial classification
- B. Natural classification
- C. Phylogenetic classification
- D. Both ( A ) and ( B )

**Answer: A**



[Watch Video Solution](#)

**31.** In which type of natural selection two peaks are form:

- A. Stabilising or normalising selection
- B. Directional or progressive selection
- C. Diversifying or disruptive selection
- D. Balancing selection

**Answer: C**



**Watch Video Solution**

**32.** Free RNA as infectious particle and of low molecular weight

A. has 2130 capsomeres in capsid

B. is large than viruses

C. is a pathogen of both plants and animals

D. was discovered by T.O Diener in 1971

**Answer: D**



**Watch Video Solution**

**33.** Prolonged diakaryotic stage is observed in

A. Phycomycetes

B. Ascomycetes

C. Deuteromycetes

## D. Basidiomycetes

**Answer: D**



**Watch Video Solution**

**34.** How many of the following belongs to Ascomycota ?

Aspergillus, Rhizopus, Agaricus , Claviceps, Neurospora ,

Albugo , Erysiphae, Alternaria, Penicillium

A. 3

B. 4

C. 5

D. 6

**Answer: C**



**Watch Video Solution**

**35.** Read the following statements regarding evolution :

A. The Therapsids were synapsids who gave rise to mammals .

B. The seed ferns were the common ancestors of all gymnosperms and angiosperms.

C. The seed siltation was given by Darwin for single-step large mutation.

D. The work of Thomas Malthus on pollution influenced Darwin .



Choose the correct option based on the accuracy of these statements.

- A. A, C and D are correct
- B. Only B ,and C are incorrect
- C. A, C and D are incorrect
- D. Only C ,and D are incorrect

**Answer: B**

 [Watch Video Solution](#)

**36.** Select the correct option of organelle with its function.

- A. Golgi apparatus - packaging and transportation of proteins
- B. Lysosomes- excretion in some organisms like Amoeba
- C. RER- synthesis and breakdown of lipids
- D. Cilia - hair-like appendage which plays a role in bacterial conjugation

**Answer: A**



**Watch Video Solution**

**37. Find the incorrect statement from the following .**

- A. Integral proteins are present on the surface of the membrane.
- B. Phospholipids are arranged in a bilayer, which is the major constitution of the cell membrane .
- C. The cell membrane of RBCs consists of 40% lipids and 52% protein
- D. Both (B) and (C)

**Answer: A**



**Watch Video Solution**

38. The fossils of the java man discovered in 1891 belonged to the species of. ....They had a larger brain capacity than its ancestors of about .....cc.

A. Homo erectus, 900

B. Homo habilis , 750

C. Homo sapiens neanderthalensis, 1400

D. Homo sapiens fossilis , 350

**Answer: A**



**Watch Video Solution**

39. Which of the following arrangements of xylem is observed in a stem ?

- A. Protoxylem lies towards pith in the centre
- B. metaxylem lies towards the periphery of the organ
- C. an endarch arrangement is present
- D. All the above

**Answer: D**



[Watch Video Solution](#)

40. Which of the following types of vascular bundles are found in a monocot root ?

- A. Collateral , conjoint and closed
- B. Radial vascular bundle with exarch xylem
- C. Bicollateral, conjoint and closed
- D. Radial vascular bundle with endarch xylem

**Answer: B**



**Watch Video Solution**

**41.** Rearrange the following zones as seen in the root in vertical section and choose the correct option.

- A.Root hair zone , B.Zone of meristems
- C.Root cap zone , D.Zone of maturation
- E.Zone of elongation

A. C,B,E,A,D

B. A,B,C,D,E

C. D,E,A,C,B

D. E,D,C,B,A

**Answer: A**



**Watch Video Solution**

**42.** Which of the following factors are favorable for the formation of oxyhemoglobin ?

(a) High  $p_{O_2}$ , low  $p_{CO_2}$

(b) Lesser  $H^+$  concentration, lower temperature

(c) Low  $p_{O_2}$ , high  $CO_2$

(d) High  $H^+$ , higher temperature

A. A and B

B. A and C

C. A and D

D. A only

**Answer: B**



**Watch Video Solution**

**43.** How many plants in the list given below have marginal placentation : Mustard, Gram, Tulip, Asparagus,



Arhar, Sun hemp, Chilli, Chochicine, onion, Moong, Pea,  
Tobacco, Lupin

A. Five

B. Six

C. Seven

D. Eight

**Answer: D**



**Watch Video Solution**

**44.** The perigynous condition of ovary is present in  
flowers of :

A. Cucumber

B. Cotton

C. Guava

D. Peach

**Answer: D**



**Watch Video Solution**

**45.** Select the correct statement from the following

A. Osmotic pressure is the negative pressure applied on hypertonic solution to stop osmosis .

B. Osmosis potential is positive.

C. More is the solute concentration of solution , more will be the pressure required to prevent water from diffusing in.

D. The net direction and the rate of osmosis does not depend on the pressure gradient nor on concentration gradient .

**Answer: C**



**Watch Video Solution**

**46.** Calvin cycle or dark reaction of photosynthesis is a light-independent reaction in which products of the

light reaction are consumed . In which step of the Calvin cycle these products are not consumed ?

- A. Carboxylation
- B. Reduction
- C. Regeneration
- D. Both (B) and (C)

**Answer: A**



**Watch Video Solution**

**47.** All of following structure of the human respiratory system contains incomplete cartilaginous rings , except :

- A. Secondary bronchi and tertiary bronchi.
- B. Trachea and primary bronchi
- C. Initial bronchioles and tertiary bronchi
- D. Distal bronchioles and terminal bronchioles

**Answer: D**



**Watch Video Solution**

**48.** Carbon dioxide is the major limiting factor for photosynthesis. With respect to this . choose the correct Statement from the following.

- A. Crops like tomato and bell pepper use increased levels of  $CO_2$  for higher productivity and are hence called greenhouse crops.
- B. The current availability of  $CO_2$  levels is limiting to  $C_4$  plants .
- C.  $C_4$  plants show saturation at about  $450p \pm$  while  $C_3$  responds to increased  $CO_2$  concentration and saturation is seen only beyond  $360p \pm$  .
- D. Increase in concentration up to 0.03 per cent can cause an increases in  $CO_2$  fixation rates.

**Answer: A**



**Watch Video Solution**

49. When one molecule of glucose undergoes oxidation in glycolysis, it produces

A. 2 molecules of pyruvic acid

B. 1 molecule of pyruvic acid

C. 2 molecules of  $CO_2$

D. 2 molecules of  $O_2$

**Answer: A**



**Watch Video Solution**

50. Match column I with column II :

| Column I            | Column II                                  |
|---------------------|--|
| A. Jaundice         | i. Small blind sac, host-symbiont microbes |
| B. Chylomicrons     | ii. Deposition of bile pigments            |
| C. Succus entericus | iii. Protein coated fat globules           |
| D. Caecum           | iv. Intestinal juice                       |

A. A - IV , B - III C - II, D - I

B. A - II , B - I C - IV, D - III

C. A - II , B - III C - IV, D - I

D. A - IV , B - II C - III, D - I

**Answer: C**



**Watch Video Solution**



51. Which of the following is the only 5-carbon compound formed during Krebs cycle

- A. Oxaloacetic acid
- B. Citric acid
- C.  $\alpha$  ketoglutaric acid
- D. Succinic acid

**Answer: C**



**Watch Video Solution**

52. In RAAS mechanism of kidney regulation , angiotensin II increases the blood volume and blood

pressure by :

A. Activating adrenal cortex to release aldosterone hormone.

B. Signalling renal tubule of nephron to reabsorb more NaCl and water.

C. Causing relaxation of glomerular blood vessels of arterioles .

D. Both (A) and (B)

**Answer: D**



**Watch Video Solution**

53. Taylor is heterozygous for two autosomal gene pair ( CcDd ). He is colour - blind . What is the probability of gametes having c, d and colour - blind genes ?

A.  $\frac{1}{2}$

B.  $\frac{1}{4}$

C.  $\frac{1}{8}$

D.  $\frac{1}{16}$

**Answer: C**



**Watch Video Solution**

54. When the heart is not pumping the blood effectively enough to meet the needs of the body, it is called

- A. Heart attach
- B. Heart block
- C. Heart failure
- D. Cardiac arrest

**Answer: C**



**Watch Video Solution**

55. What is the nature of the two strands of a DNA duplex :-

- A. Anti-parallel and complementary
- B. Identical and complementary
- C. Anti-parallel and non-complementary
- D. Dissimilar and non-complementary

**Answer: A**



**Watch Video Solution**

**56.** Which of the following statements is false regarding the " law of segregation " ?

- A. Law of segregation is also called the law of purity of genes.

B. Alleles separate from each other during gametogenesis.

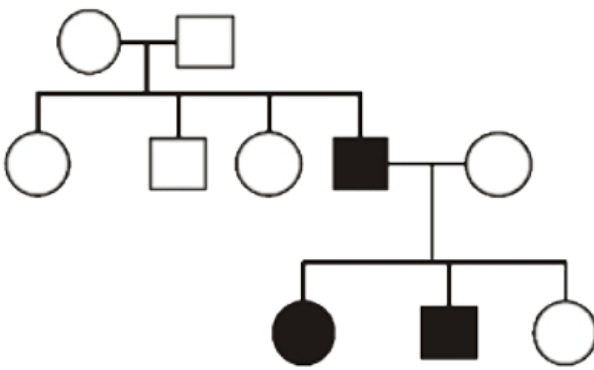
C. Segregation of factors is due to the segregation of chromosomes during meiosis.

D. Alleles show blending and only one of the characters are recovered in  $F_2$

**Answer: D**

 [Watch Video Solution](#)

57. Inheritance of genetic trait in given pedigree chart is controlled by



- A. Autosomal recessive gene
- B. Allosomal dominant gene
- C. Holandric gene
- D. Autosomal dominant gene

**Answer: A**



**Watch Video Solution**

58. Read the following statements about the internal structure of the human heart.

I. Humans have a an auto - excitable , chambered , muscular and myogenic heart.

II. The heart is mesodermal in origin and is present symmetrically between two lungs in the thoracic cavity.

III. The opening between the right atrium and left ventricle is guarded by a tricuspid valve.

IV. Only the sino - atrial node of the heart has the ability to generate action potentials without any external stimuli.

How many statement/s is/ are incorrect from the above ?

A. Two



B. Three

C. Four

D. One

**Answer: B**



**Watch Video Solution**

59. ....is defined as an ecological state of a species being unique to a specific geographic location.

A. Exotic species

B. Endemic species

C. Ecosystem

D. Endangered species

**Answer: B**



**Watch Video Solution**

**60.** The protein haemoglobin found in humans can be described having a .....structure.

A. primary

B. secondary

C. tertiary

D. quaternary

**Answer: D**



[Watch Video Solution](#)

61. Which of the following compound present in the blood is associated with immunity response ?

- A. Gamma globulin protein
- B. Albumin protein
- C. Alpha globulin protein
- D. Both (A) and (C)

**Answer: A**



[Watch Video Solution](#)

62. Which of the following is used as a substrate for the production of  $CH_3CH_2OH$  ?

- A. Maize
- B. Malted cereals
- C. Lactose
- D. None of the above

**Answer: B**

 [Watch Video Solution](#)

63. During the synthesis phase, if the initial amount of DNA in the cell is 15 ng, then after the synthesis phase

the amount of DNA in the cell will be .....

A. 15 ng

B. 30 ng

C. 45 ng

D. 60 ng

**Answer: B**



**Watch Video Solution**

**64.** The set of hormones which lead to the formation of secondary messengers like cyclic AMP during their mode of action is:

A. LH, FSH, ACTH

B. Estrogen , oxytocin , FSH

C. Cortisol , estrogen , progesterone

D. Thyroxine , estradiol, LH

**Answer: A**



**Watch Video Solution**

**65.** Read the following statements and select the correct option:-

A. Gymnosperm does not show xerophytic character.

B. In Cycas , coralloid roots are associated with fungi.

C. All gymnosperms are heterosporous.

D. In conifers , needle - like leaves reduce the surface area.

How many above statement are correct ?

A. A, B and C

B. B, C and D

C. C and D

D. A and D

**Answer: C**



**Watch Video Solution**

**66.** Which of the following pair of hormones are antagonistic in action ?

A. Calcitonin and parathormone

B. Somatostatin and GHRH

C. Adrenaline and insulin

D. All of the above

**Answer: D**



**Watch Video Solution**

**67.** Which of the following algae is used to prepare culture medium to grow microbe ?

A. Gelidium

B. Laminaria



C. Chlorella

D. Both (A) and (B)

**Answer: A**



**Watch Video Solution**

**68.** How many plants in the list given below are wind -  
pollinated plants ?

Coconut , Vallisneria , Ophrys, Amorphophallus,  
Commelina, bamboo, wheat , rice , Yucca.

A. Seven

B. Ten

C. Four

D. Five

**Answer: C**



**Watch Video Solution**

**69.** Match the column :

| Column I    | Column II        |
|-------------|------------------|
| A. Acidic   | 1. Valine        |
| B. Basic    | 2. Lysine        |
| C. Neural   | 3. Glutamic acid |
| D. Aromatic | 4. Phenylalanine |

A. A - 3, B - 2, C - 1, D - 4

B. A - 2, B - 3, C - 4, D - 1

C. A - 4, B - 1, C - 2, D - 3

D. A - 1, B - 2, C - 3, D - 4

**Answer: A**



**Watch Video Solution**

**70.** Find the odd one out with respect to the mode of chemical secretion.

A. Pineal gland

B. Pituitary gland

C. Thyroid gland

D. Mammary gland

**Answer: D**



**Watch Video Solution**

71. The gametes of female determines the sex of a child in :

A. Grasshopper

B. Drosophila

C. Cockroach

D. Peacock

**Answer: D**



**Watch Video Solution**

**72.** Select the option which describes the correct matching between bones and examples mentioned below :

I. Skull bones : Facial bone , cranial bones and hyoid

II. Axial bones : Sternum, ribs and clavicle

III. Long bones : Humerus and femur

IV. Girdle : Scapula and coxal

A. I, II and III

B. II , III and IV

C. I, III and IV

D. Only II and IV

**Answer: C**



**Watch Video Solution**

**73.** Find the true statement from the following

A. Ori means origin of transcription.

B. Some bacterial cell may have copy number of plasmid that varies from 15 - 100.

C. Vector should have many recognition sites for commonly used restriction enzymes so that alien DNA can attach to any one of the sites easily.

D. An ideal vector should have ori, site restriction site for different REN but not a selectable marker.

**Answer: B**

 [Watch Video Solution](#)

74. If alien DNA is introduced using Pst I in pBR322 then transformant will grow on :

- A. Ampicillin
- B. Tetracycline
- C. Both (A) and (B)
- D. None of these

**Answer: B**



**Watch Video Solution**

75. A common collagenous connective tissue layer which hold the number of muscle bundles of skeletal muscle is called :

- A. Fascia
- B. Fascicles
- C. Endomysium
- D. Perimysium

**Answer: A**





[Watch Video Solution](#)

76. The enzyme ADA, that is crucial for the immune system to function is abbreviated as :

- A. Adenosine deoxyaminase
- B. Adenosine deaminase
- C. Aspartate deaminase
- D. Arginine deaminase

**Answer: B**



[Watch Video Solution](#)

77. A group of individuals from different species living in the same habitat and exhibiting functional interaction is called :

A. Biotic community

B. Population

C. Ecosystem

D. None of the above

**Answer: A**



**Watch Video Solution**

**78.** Read the following statements about the nervous system:

I. The neural organisation in Hydra is composed of a network of neurons.

II. A neuron is a macroscopic structure composed of three major parts

III. Nissl's granules are present in dendrites and cell body.

IV. The axons transmit nerve impulses towards the cell body.

How many from the many from the above is/are correct ?

A. Four

B. Three

C. Two

D. One

**Answer: C**



**Watch Video Solution**

**79.** Select the correct option.

Column I

Column II

A. Synapsis

1. Pachtene

B. Centromere split

2. Zygotene

C. The action of enzyme recombinase

3. Anaphase II

D. Centromeres do not split

4. Anaphase I

A. A : 2, B : 1, C : 3, D : 4

B. A : 2, B : 3 , C : 1 , D : 4

C. A : 1, B : 2 , C : 3 , D : 4

D. A : 2, B : 3 , C : 4 , D : 1

**Answer: B**



**Watch Video Solution**

**80.** In the given structure of the human brain below :

Cerebral cortex, thalamus, limbic system , corpora quadrigemina , hypothalamus, brain stem, cerebral aqueduct, cerebellar hemisphere.

How many structures are associated with the forebrain of human ?

A. Three

B. Four

C. Five

D. Six

**Answer: B**



**Watch Video Solution**

**81.** Choose the correct statement from the following .

A. Dioecious organisms are seen only in animals.

B. Dioecious organisms are seen only in plants.

C. Dioecious organisms are seen in both plants and animals.

D. Dioecious organisms are seen only in vertebrates.

**Answer: C**



**Watch Video Solution**

**82.** Arrange the following layers of microporangium according to outside .

(A) Endothecium

(B) Middle layer

(C) Tapetum

(D) Epidermis

A. D, A, B ,C

B. B, A, C, D

C. D, C, B , A

D. C, B , A, D

**Answer: A**



**Watch Video Solution**

**83.** Read the following statements about the cockroach and select the option :

I. Forewings (mesothoracic) called tegmina are opaque dark and leathery and cover the hind wings .

II. Head is formed by the fusion of eight segments and



shows little mobility .

III. Genital pouch in male is formed by 9<sup>th</sup> and 10<sup>th</sup> terga and 9<sup>th</sup> sternum.

A. I, II and III are correct

B. II and III are incorrect

C. Only I is correct

D. Only II is incorrect

**Answer: D**



**Watch Video Solution**

**84.** Choose the correct statement from the following .

- A. Embryo sac is formed by the reduction division in megaspore .
- B. Typical female gametophyte is 6 - celled 8 nucleate.
- C. The cells located at chalazal ends of embryo sac are called as antipodals
- D. Filiform apparatus is a characteristic feature of antipodals.

**Answer: C**



**Watch Video Solution**

85. How many plants have gynoecium that is bicarpellary obligately placed and syncarpous with placenta swollen with many ovules ?

Brinjal, gram , tulip , Asparagus, arhar, petunia, chilli, Colchicum autumnale, muliathi, Aloe pea , tobacco, lupin

A. Four

B. Five

C. Six

D. Three

**Answer: A**



**Watch Video Solution**

**86.** Which one of the following is incorrect regarding compound epithelium ?

A. Multi - layered with no stretchability.

B. Cover the moist surface of buccal cavity and pharynx.

C. Provide protection against chemical and mechanical stress.

D. They play a vital role in secretion and absorption.

**Answer: D**



**Watch Video Solution**

87. Select the incorrect statement about photoperiodism.

A. The site of perception of light / dark duration are the leaves.

B. Flowering in certain plants depends not only on a combination of light and dark exposures but also their relative durations.

C. The hypothesised hormonal substance migrates from shoot apices to leaves for inducing flowering .

D. Shoot apices modify themselves into flowering apices prior to flowering .

**Answer: C**



**Watch Video Solution**

**88.** The appearance of brown spots surrounded by chlorotic veins is the prominent symptom of:-

- A. Copper deficiency
- B. Molybdenum deficiency
- C. Magnesium toxicity
- D. Manganese toxicity

**Answer: D**



**Watch Video Solution**

**89.** Find out the correct match from the following table and select the option with all the correct one.

|       | Act   | Year |
|-------|---|------|
| (i)   | The National Forest policy                        | 1981 |
| (ii)  | The Montreal Protocol                             | 1987 |
| (iii) | The water (Prevention & Control of Pollution) Act | 1974 |
| (iv)  | The air (Prevention & Control of Pollution) Act   | 1986 |

- A. (i), (ii) and (iii)
- B. (ii) and (iv)
- C. (ii) and (iii) only
- D. (i), (iii) and (iv)

**Answer: C**



90. Match the column and select the correct option.

| Column - I       |       | Column - II   |
|------------------|-------|---------------|
| (1) Leaf tendril | (i)   | Cactus        |
| (2) Leaf Spine   | (ii)  | Pea           |
| (3) Stem tendril | (iii) | Bougainvillea |
| (4) Stem thorn   | (iv)  | Gourds        |
|                  | (v)   | Turmeric      |

A. 1 - v, 2- iii, 3 - ii, 4 - i

B. 1 - ii, 2- iii, 3 - iv, 4 - i

C. 1 - iv, 2- i, 3 - v, 4 - iii

D. 1 - ii, 2- i, 3 - iv, 4 - iii

**Answer: D**



