



## BIOLOGY

### BOOKS - NTA MOCK TESTS

#### NTA NEET SET 106

#### Biology

1. Which of the following pairs of muscles undergo contraction during the process of inspiration in human ?

A. Phrenic muscle of diaphragm and external inter - costal muscles

B. Phrenic muscle of diaphragm and internal inter - costal muscles

C. External inter - costal and internal inter - costal muscles

D. Abdominal muscles and external inter- costal muscles costal muscles

**Answer: A**



**Watch Video Solution**

2. Griffith performed an experiment to prove the chemical nature of genetic material. In Griffith's experiment .

A. the protein coat from pathogenic cell was able to transform non - pathogenic cells.

B. heat killed pathogenic cells caused pneumonia.

C. some substance from pathogenic cells was transferred to non - pathogenic cells and causes transformation.

D. the polysaccharide coat of bacteria caused Pheumonia.

**Answer: C**

 [Watch Video Solution](#)

3. Which of the following is the structural and functional unit of liver in humans ?

- A. Hepatocyte
- B. Hepatic cord
- C. Hepatic lobule without Gillsson's capsule
- D. Hepatic lobule with Gillsson's capsule

**Answer: D**

 [Watch Video Solution](#)

4. Net gain of ATP molecules , during aerobic respiration , is

- A. 40 molecules
- B. 48 molecules
- C. 36 molecules
- D. 38 molecules

**Answer: C**



[Watch Video Solution](#)

5. Where is the location of both kidneys inside the human body ?

- A. Between 5th thoracic and 12th thoracic vertebra in retroperitoneal

B. Between 7th thoracic and 5th lumbar vertebra in retroperitoneal

C. Between 12th thoracic and 3rd lumbar vertebra in retroperitoneal

D. Between 5th thoracic and 3rd thoracic vertebra in retroperitoneal

**Answer: C**

 [Watch Video Solution](#)

6. How many chromosomes will the cell have at G<sub>1</sub> , after S , the after M - phase respectively , if it has 21 chromosomes at interphone ?

A. 22,22,11

B. 22,22,22

C. 11,11,11

D. 11,22,22

**Answer: B**



**Watch Video Solution**

7. Which of the following statement is incorrect about coronary artery disease in man ?

A. CAD is often referred to as atherosclerosis , which affects the vessels that supply blood to the heart muscle.

B. It is caused by deposits lipid - cholesterol , calcium and fibrous tissue in the wall of major arteries.

C. It makes the lumen of carotid arteries narrower.

D. All of the above are correct

**Answer: C**

 [Watch Video Solution](#)

8. Starch grain in pea plant shows

A. complete dominance

B. incomplete dominance

C. co - dominance

D. epistasis

**Answer: B**

 [Watch Video Solution](#)

9. A population growing in a habitat with limited resources shows four phases of growth in the following sequence -

- A. Acceleration - Deceleration - Lag phase Asymptote
- B. Asymptote - Acceleration - Deceleration - Lag phase
- C. Lag phase - Acceleration - Deceleration - Asymptote
- D. Acceleration - Lag phase - Deceleration - Asymptote

**Answer: C**

 [Watch Video Solution](#)

10. Read the following statements regarding the human circulatory system.

A . The systemic circulation provides nutrients , oxygen, and other essential substances to all the tissues including the lungs.



B. A unique vascular connection exists between the digestive tract and the liver is called the hepatic portal system.

A. A is true and B is false

B. Both A and B are true

C. A is false and B is true

D. Both A and B are false

**Answer: C**



**Watch Video Solution**

**11.** Necrosis in crops is due to the deficiency of

A. Ca, K, Mg and Cu

B. N, K, S and Mo

C. N, S, Fe and Zn

D. Mg, S , Mn and Ca

**Answer: A**

 [Watch Video Solution](#)

**12.** Match the following and choose the correct option from the below table.

	Column-I		Column-II
[A]	Meristem	(i)	Photosynthesis, storage
[B]	Parenchyma	(ii)	Mechanical support
[C]	Collenchyma	(iii)	Actively dividing cells
[D]	Sclerenchyma	(iv)	Stomata
[E]	Epidermal tissue	(v)	Sclereids

A. (A) - (i), (B) - (iii) , (C) - (v) , (D) - (ii) , (E) - (iv)

B. (A) - (iii), (B) - (i) , (C) - (ii) , (D) - (v) , (E) - (iv)

C. (A) - (ii), (B) - (iv) , (C) - (v) , (D) - (i) , (E) - (iii)

D. (A) - (v), (B) - (iv) , (C) - (iii) , (D) - (ii) , (E) - (i)

**Answer: B**



**Watch Video Solution**

**13.** Match of the following types of leucocyte with their shape of nuclei.

	Leucocyte		The shape of the nucleus
A.	Neutrophil	I.	Rounded
B.	Monocytes	II.	Bilobed
C.	Lymphocytes	III.	Multilobed
D.	Eosinophil	IV.	Kidney shape

A. C - I , D - II , A - II , B - IV

B. C - I , B - II , D - III , A - IV

C. D - I , C - II , A - III , B - IV

D. C - I , D - II , B - III , A - IV

**Answer: A**



**Watch Video Solution**

14. In " rivet - popper hypothesis " , the wing rivets are compared with

- A. dominant species
- B. critical link species
- C. rare species
- D. key stone species

**Answer: D**



**Watch Video Solution**

15. Why predators in nature are prudent ?

- A. They all kill prey
- B. They feed on dead organism
- C. They do not over exploit its prey
- D. They are too efficient to kill their prey

**Answer: C**

 [Watch Video Solution](#)

16. Match the column I and II identify the correct option.

	Column I (Microbes)		Column-II (Use)
[A]	Streptococcus	(i)	Biogas
[B]	Methenobacterium	(ii)	Biofertilizer
[C]	Azospirillum	(iii)	Ethanol
[D]	Yeast	(iv)	Streptokinase

A. [A] - (i) , [B] - (ii) , [C] - (iii) , [D] - (iv)

B. [A] - (iv) , [B] - (i) , [C] - (ii) , [D] - (iii)

C. [A] - (iv) , [B] - (i) , [C] - (iii) , [D] - (ii)

D. [A] - (i) , [B] - (iv) , [C] - (ii) , [D] - (iii)

**Answer: B**



**Watch Video Solution**

**17. Microinjection is a method used in genetic engineering for**

A. DNA fingerprinting

B. transformation of animal cells

C. transformation of plant cells

D. transformation of bacteria

**Answer: B**

 [Watch Video Solution](#)

**18.** The specific DNA sequence where EcoRI cuts is

A. GATTCG

B. GAATTC

C. GTTCAA

D. TTCCAA

**Answer: B**

 [Watch Video Solution](#)

19. Which of the following endocrine gland's hormones binds to their specific receptors present inside the target cells to form hormone - receptor complex ?

- A. Pituitary hormones
- B. Adrenal medulla hormones
- C. Hypothalamic hormones
- D. Adrenal cortex hormones

**Answer: D**



**Watch Video Solution**

20. Select the wrong statement from the following .



- A. There is now enough evidence that essential process like metabolism , translation and splicing evolved around DNA.
- B. DNA does not act as catalyst
- C. RNA can splice itself and also able to act as a catalyst
- D. DNA stores genetic information

**Answer: A**

 [Watch Video Solution](#)

**21.** Select the odd one among the following options about the least possible adverse effect of global warming.

- A. Retreat of glaciers
- B. An increase of UV - B - radiation
- C. Sea - level rise

D. Extraordinary weather patterns

**Answer: B**

 [Watch Video Solution](#)

22. Which of the following character is wrong regarding brown algae ?

- A. Presence of chlorophyll 'a' and 'b'
- B. They remain attached to the surface by holdfast
- C. presence of chlorophyll 'a' and 'c'
- D. presence of fucoxanthin which gives brown colour

**Answer: A**

 [Watch Video Solution](#)

23. The least constancy of shape is exhibited by .....

A. white blood cells

B. blood platelets

C. epithelial cells

D. red blood cells

**Answer: A**

 [Watch Video Solution](#)

24. Rapid inter - nodal elongation is caused due to which hormone

?

A. Gibberrllin

B. Auxin

C. Cytokinin

D. Abscisic acid

**Answer: A**



**Watch Video Solution**

**25.** Prolonged .....X.....leads to lead to complex disorder called diabetes mellitus , associated with loss of .....through urine.

Select the correct option for X and Y.

A. X - hyperglycemia, Y - glucose

B. X - hypoglycemia, Y - glucose

C. X - hyperglycemia, Y - ketone bodies

D. both (a) and (c)

**Answer: D**



[Watch Video Solution](#)

26. The secretion of endocrine gland's hormones are chemically

- A. protein or polypeptides
- B. glycoproteins
- C. steroids
- D. all of the above

**Answer: D**



[Watch Video Solution](#)

27. The certain endodermal cell which is present opposite to the xylem bundle remain thin - walled , these cells are

- A. bulliform cells

B. passage cells

C. companion cells

D. subsidiary cells

**Answer: B**



**Watch Video Solution**

**28.** Extension of plasma membrane in prokaryotic cell is :

A. mesosome

B. nucleoid

C. ribosome

D. none of these

**Answer: A**



**Watch Video Solution**

29. Late blight of potato is caused by :

- A. Phytophthora infestans
- B. Xanthomonas oryzae
- C. Puccinia graminis
- D. TMV

**Answer: A**



Watch Video Solution

30. Double fertilization involves :-

- A. Fusion of male and female gametes only
- B. Fertilization of egg cell with two male gametes.

C. development of antipodal cells

D. syngamy + triple fusion

**Answer: D**



**Watch Video Solution**

**31.** 3-PGA is the first step stable product in ...(i) ..and is formed when initial CO<sub>2</sub> acceptor ....(iii) ... take CO<sub>2</sub> in presence of enzyme RuBisCO.

A. (i) carbon -reduction cycle, (ii) PEP

B. (i) Calvin cycle , (ii) RuBP

C. (i) Calvin cycle , (ii) Malic acid

D. (i) Hatch and slack cycle , (ii) PEP

**Answer: B**





**32.** Read the following statements and select the correct option :

- I. In the skeletal muscles fibre, large number of myofilaments are arranged in the sarcoplasmic .
- II. The central part of an anisotropic band where the only thick , filament is present and thin filament is absent is called 'A' band.
- III. In the resting state , a tropomyosin protein masks the active b binding sites for myosin on the active filaments .
- IV. The junction between a motor neuron and the sarcolemma of the muscle fibres is called motor-end plate.

A. I , II and IV are true

B. II, III and IV are true

C. I and IV are true

D. only IV true

**Answer: C**



**Watch Video Solution**

**33.** Nodule formation in leguminous plants occur due to

(i) Cytokinins produced by invading bacteria

(ii) Auxins produced by plant cell.

(iii) Auxins produced by invading bacteria.

(iv) Cytokinin produced by plant cell.

A. (i) and (ii) only

B. (i) and (iii) only

C. (iii) and (iv) only

D. (ii) and (iv) only

**Answer: A**



**Watch Video Solution**

34. Which of the following is unique to mitosis and not a part of meiosis

- A. Homologous chromosomes behave independently
- B. Chromatids are separated during anaphase
- C. Homologous chromosomes pair and form bivalents
- D. Homologous chromosomes crossover .

**Answer: B**

 [Watch Video Solution](#)

35. Fluid model of plasma membranes shows. that

- A. quasi -fluid nature of lipid enables lateral movement of proteins. within the overall bilayer.
- B. the lateral movement within the membrane is measured as fluidity .
- C. the fluid natural of membrane is important for growth , formation of intercellular junctions, secretion , endocytosis, cell division , etc.
- D. All of the above

**Answer: D**

 [Watch Video Solution](#)

**36.** Which of the following is an age related bone disorder characterised by decreased bone mass and increased chances of fractures ?

- A. Arthritis
- B. Osteoarthritis
- C. Osteoporosis
- D. Gout

**Answer: C**



**Watch Video Solution**

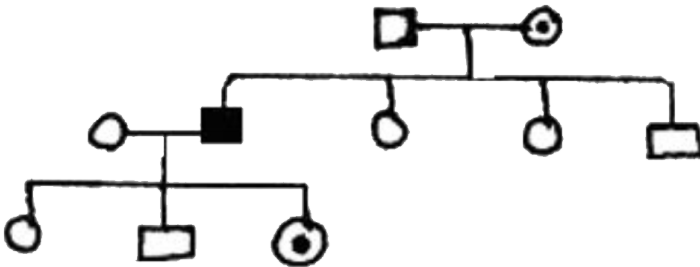
**37.** Deserts , grasslands, forests and tundra are the examples of :

- A. Biomes
- B. Biogeographical regions
- C. Ecosystems
- D. Biospheres

Answer: A

 Watch Video Solution

38. Predict the correct conclusion from the following chart.



- A. character is dominant and carried by x chromosome
- B. Character is carried by y chromosome
- C. Character is sex linked recessive
- D. Character is recessive autosomal

Answer: C



[Watch Video Solution](#)

**39.** The "lock and key" model of enzyme action illustrates that a particular enzyme molecule

- A. May be destroyed and resynthesised several times
- B. Interacts with a specific type of substrate molecule
- C. Reacts at identical rates under all conditions
- D. Forms a permanent enzyme-substrate complex

**Answer: B**



[Watch Video Solution](#)

40. Match the column - I with column - II :

	Column I		Column II
A.	Bipolar neuron	I.	Cerebral cortex
B.	Multipolar neuron	II.	Axon of neuron
C.	Pseudo-unipolar neuron	III.	Retina of eye
D.	Schwann cells	IV.	Spinal cord

A. A - IV , B - I , C - III, D - II

B. A - III , B - II , C - IV , D - I

C. A - III , B - I , C - IV , D - II

D. A - III , B - I , C - II , D - IV

**Answer: C**



**Watch Video Solution**

41. Oxidative phosphorylation refers to



- A. Anaerobic production of ATP
- B. The citric acid cycle production of ATP
- C. Production of ATP by chemiosmosis
- D. Alcoholic fermentation

**Answer: C**



**Watch Video Solution**

**42.** How many activities from the following are controlled by the hypothalamus ?

Body temperature, respiration, cardiovascular reflexes, secretion sexual drive.

- A. Two
- B. Three

C. Four

D. Five

**Answer: B**



[Watch Video Solution](#)

**43.** In an aquatic ecosystem, the trophic level equivalent to cows in grasslands is

A. Phytoplankton

B. Zooplankton

C. Nekton

D. Benthos

**Answer: B**



[Watch Video Solution](#)

44. Which of the following statements is false ?

- A. TMV has a double - stranded RNA molecule.
- B. Most plant viruses are RNA viruses.
- C. The bacteriophage has a double - stranded DNA molecule.
- D. Most animal viruses lack ssDNA and can have dsDNA as their genetic material.

**Answer: A**

 [Watch Video Solution](#)

45. Select the correct match .

- A. *Entamoeba histolytica*: protozoan parasite in the small intestine of man
- B. *Wuchereria bancrofti* : is a direct parasite of the small intestine of man.
- C. *Plasmodium falciparum* : exo - erythrocytic schizogony / cycle is absent .
- D. *Ancylostoma duodenale* : aschelminthes

**Answer: C**

 [Watch Video Solution](#)

**46.** Read the following and select the only true statement about cockroach.

- A . Each Malpighian tubule is lined by glandular and ciliated cells.
- B. A characteristic mushroom gland is present in the female

cockroach in the 6th - 7th abdominal segments .

C. Both compound eye consists of about 2000 hexagonal ommatidia.

D. The development of *P. americana* is paurometabolous through the nymphal stage.

A. A & B

B. C & D

C. B & D

D. A & D

**Answer: D**



**Watch Video Solution**

**47.** Find out the correct pair .

- A. About 15 mya , Australopithecus were probably lived in African grassland and were essentially ate fruit.
- B. The first human like being the hominid was called Homo erectus with capacity 650 - 800cc.
- C. Between 1,00,00 - 40,00 years back, the Neanderthal man were evolved which were brain size of 1400cc.
- D. The skull of body human is more like adult chimpanzee skull than adult human skull.

**Answer: C**



**Watch Video Solution**

**48.** Jute fibres are obtained from the :

- A. Secondary phloem

B. Pith

C. Xylem

D. Endodermis

**Answer: A**



**Watch Video Solution**

**49.** How many ova are released in the case of maternal twins and fraternal twins respectively in human ?

A. 2,2

B. 1,1

C. 1,2

D. 2,1

**Answer: C**



[Watch Video Solution](#)

50. In an annual ring, the light coloured part is known as

- A. Early wood
- B. Late wood
- C. Heartwood
- D. Sapwood .

**Answer: A**



[Watch Video Solution](#)

51. Which of the following pair of assisted reproductive techniques involves In-vivo fertilization ?

- A. GIFT & ZIFT



B. ZIFT & ICSI

C. IUI & GIFT

D. IUI & ICSI

**Answer: C**



**Watch Video Solution**

**52.** The chief component of the middle lamella in plant cell is :

A. Potassium

B. Calcium

C. Magnesium

D. Phosphorus

**Answer: B**



**Watch Video Solution**

53. Select the correct match about vertebrates with their features :

- A. Teeth of Scoliodon → modified cycloid scales
- B. Electric organ of Torpedo → modified muscles on dorsal side
- C. Sting of Trygon → modified pelvic fin
- D. All of the above

**Answer: B**

 [Watch Video Solution](#)

54. Potato spindle tuber disease is caused by

- A. A nematode

B. A virus

C. A bacterium

D. A viroid

**Answer: D**



**Watch Video Solution**

**55.** Read the following statements about human reproduction :

I. A tertiary follicle is characterized by the presence of a fluid - filled cavity called the antrum .

II. The labia minora are fleshy folds of tissue , extend down the mons pubis , and surround the vaginal orifice .

III. Most of the major organ systems of the fetus formed by the end of the second month of pregnancy .

IV. The mammary glands of the female start producing milk during

pregnancy.

How many statements are incorrect from from the above

- A. One
- B. Two
- C. Three
- D. Four

**Answer: C**



**Watch Video Solution**

**56.** In  $C_4$  plants , the bundle sheath cells

- A. have thin walls of facilitate gaseous exchange
- B. have large intercellular spaces
- C. are rich in PEP carboxylase

D. have a high density of Chloroplast

**Answer: D**

 [Watch Video Solution](#)

57. The original Darwin's Finches on Galapagos islands was :

A. Seed eater

B. Fruit eater

C. Castus eater

D. Insect eater

**Answer: A**

 [Watch Video Solution](#)

58. Pollination is essential in angiospermic plants because

A. It decreases the time required for fertilization.

B. both of the male and female gametes are non-motile and they need to be brought together for fertilization .

C. it is useless process that does not affect the time of fertilization.

D. Both A and B

**Answer: B**



[Watch Video Solution](#)

59. Pineapple fruit develops from

A. Unilocular polycarpellary flower

- B. Multipostillate syncarpous flower
- C. Multilocular monocarpellary flower
- D. A cluster of compactly borne flowers on an axis

**Answer: D**



**Watch Video Solution**

**60.** A sewage treatment process in which anaerobic decomposer bacteria present in the waste is used to further carry out the breakdown of organic matter is called :

- A. Cyclic treatment
- B. Activated sludge treatment
- C. Primary treatment
- D. Tertiary treatment

**Answer: B**



**Watch Video Solution**

**61.** An example of Competitive inhibitor is :

- A. Succinic dehydrogenase and malonate
- B. Hexokinase by glucose 6 phosphate
- C. Cytochrome oxidase /Cyanide
- D. More than one option is correct

**Answer: A**



**Watch Video Solution**

**62.** In india , hotspots are found in :



- A. Himalaya and Eastern Ghats
- B. Indo-Burma and Northern Himalayas
- C. Eastern Himalaya and the Western Ghats
- D. Both Eastern and Western Ghats

**Answer: C**



**Watch Video Solution**

**63.** Select the incorrect statement w.r.t decomposition .

- A. Bacterial and fungal enzyme degrade detritus into simpler inorganic substances in a process is called catabolism.
- B. Humans is less resistant to microbial action and undergoes decomposition at an extremely slow rate.

- C. By the process of leaching , watersoluble inorganic nutrients go down into the soil horizon and get precipitated as unavailable salts.
- D. Decomposition is largely an oxygen requiring process.

**Answer: B**



**Watch Video Solution**

**64.** Turner syndrome in human is caused by :

- A. Autosomal aneuploidy
- B. Sex chromosomes aneuploidy
- C. Polyploidy
- D. Point mutation

**Answer: B**



**Watch Video Solution**

**65.** Match the following and select the correct option

	Column I	Column-II
[A]	Vegetative cell	1. Sporopollenin
[B]	Generative cell	2. Spindle-shaped cell
[C]	Exine	3. Large sized and has abundant food reserve
[D]	Intine	4. Cellulose and pectin

A. A : 1 , B : 2 , C : 3 , D : 4

B. A : 3 , B : 4 , C : 2 , D : 1

C. A : 3 , B : 2 , C : 1 , D : 4

D. A : 2 , B : 1 , C : 4 , D : 3

**Answer: C**



**Watch Video Solution**

**66.** Which one of used in the production of insulin by genetic engineering ?

- A. *Saccharomyces cerevisiae*
- B. *Escherichia coli*
- C. *Agrobacterium tumefactions*
- D. Both ( A) and ( B)

**Answer: B**



**Watch Video Solution**

67. Which of the following method would not produce clones ?

- A. Double fertilization
- B. Apomixis
- C. Vegetative reproduction
- D. Tissue culture

**Answer: A**

 [Watch Video Solution](#)

68. The most abundant protein in the animal world is :

- A. Trypsin
- B. Hemoglobin
- C. Collagen

D. Insulin

**Answer: C**

 [Watch Video Solution](#)

**69.** Endosperm, a product of double fertilization in angiosperms is absent in the seeds of

A. Wheat

B. Orchids

C. Maize

D. Castor

**Answer: B**

 [Watch Video Solution](#)

70. The statement , " if a chemical process is affected by more than one factor , than its rate will be determined by the factor which directly affects the process of its quantity is changed " was proposed by

A. Von Mayer

B. Arnon

C. Blackman

D. Hill

**Answer: C**



**Watch Video Solution**

71. Phyllode is present in :

A. Asparagus

B. Euphorbia

C. Australian Acacia

D. Opuntia

**Answer: C**



**Watch Video Solution**

**72.** What is the effect on biodiversity as we move from equator to polar region ?

A. In increase

B. First decreases than increase

C. It decreases

D. It remains unchanged

**Answer: C**





Watch Video Solution

73. Which of the following statements is wrong regarding the rules of nomenclature ?

- A. The first word denoting the genus starts a capital latter.
- B. The specific epithet starts with a small latter.
- C. Biological names are printed in italics to indicate their Latin origin .
- D. In the biological name - *Mangifera indica* L., ' L ' denotes the language ' Latin '

**Answer: D**



Watch Video Solution

74. Which one of the following statements is incorrect regarding regarding diffusion pressure deficit ( DPD ) ?

- A. DPD is directly proportional to the solute concentration of the system .
- B. DPD of fully turgid cell becomes zero
- C. DPD for a plasmolysed cell is highest
- D. DPD of a flaccid cell is always more than osmotic pressure .

**Answer: A**

 [Watch Video Solution](#)

75. All the following are correct , except :

- A. i-gene codes for the repressor of lac operon

B. z-gene codes for the beta-galactosidase

C. y-gene codes for transacetylase

D. three gene products are required for

**Answer: C**



**Watch Video Solution**

**76.** Which of the following is correct about the transport of carbon dioxide from the tissue to lung alveoli ?

A.

Carbomino - Hb form	As Dissolved plasma	As Bicarbonate
20 – 25 %	70 %	5 – 7 %

B.

Carbomino - Hb form	As Dissolved plasma	As Bicarbonate
70 %	5 – 7 %	20 – 25 %

C.

Carbomino - Hb form	As Dissolved plasma	As Bicarbonate
5 – 7 %	20 – 25 %	70 %

D.

Carbomino - Hb form	As Dissolved plasma	As Bicarbonate
20 – 25 %	5 – 7 %	70 %

**Answer: D**



[Watch Video Solution](#)

77. In a monoecious plant :

- A. Male and female sex organ are on different individuals
- B. Male and female gametes are of two morphologically distinct types
- C. Male and female sex organs are on the same individual
- D. All the stamens are fused to form one unit

**Answer: C**



**Watch Video Solution**

**78.** Read the following statements about evolution :

Homology is based on convergent evolution whereas analogy refers to a situation exactly opposite .

Industrial melanism in England is one of best examples of comparative anatomy.

Disturbance in genetic equilibrium in a population indicates the evolution have occurred .

- A. A ,B ,and C are true
- B. A ,B ,and C are false
- C. B and C are true , A is false
- D. A and B are false , C is true

**Answer: D**



**Watch Video Solution**

**79.** One advantage of cleistogamy is 0

- A. It leads to greater genetic diversity
- B. Seed dispersal is more effected widespread
- C. Seed set is not dependent on pollinators
- D. Each visit of a pollinator results in transfer of hundreds of pollen grains

**Answer: C**



**Watch Video Solution**

80. How many from the following phylum has external fertilisation with indirect development ?

{Porifera, Ctenophora , Echinodermata, Hemichordata }

- A. Four
- B. Three
- C. Two
- D. One

**Answer: B**



[Watch Video Solution](#)

81. Tonoplast is a membrane surrounding the

- A. cytoplasm

B. vacuole

C. nucleus

D. Mitochondria

**Answer: B**



**Watch Video Solution**

**82.** Which of the following contraceptive devices also protect the users against sexually transmitted diseases ?

A. Condom

B. Diaphragm

C. IUD

D. Both A and C

**Answer: A**





Watch Video Solution

83. Which of the following is the incorrect statement regarding animal tissue?

- A. Epithelial cells are compactly packed with little intercellular matrix.
- B. Tight junctions perform cementing to keep neighbouring cells together .
- C. Connective tissue rangas from muscle fibres together and are covered by connective tissue sheath.
- D. Cell junctions hold smooth muscle fibres together and are covered by connective tissue sheath.

**Answer: B**



Watch Video Solution

84. IARI , New Delhi developed which variety of beans which is protein enriched :-

- A. Pusa sawni
- B. Pusa Gaurav
- C. Pusa A - 4
- D. Lablab

**Answer: D**



85. If a primary root continues to grow. the type of root system will be known as :

A. Secondary

B. Fibrous

C. Tap

D. Stilt

**Answer: C**



**Watch Video Solution**

**86. Match the following :**

Column - I	Column - II
A. Milk synthesizing hormone	I. Progesterone
B. Pregnancy hormone	II. LH
C. Milk let-down hormone	III. Prolactin
D. Formation of corpus luteum	IV. Oxytocin

A. A-IV, B-III, C-II, D-I

B. A-III, B-IV, C-II, D-I

C. A-III, B-I, C-IV, D-II

D. A-III, B-IV, C-I, D-II

**Answer: C**

 [Watch Video Solution](#)

**87.** In which of the following, belongs to the same class of algae?

A. Chara, Fucus, Polysiphonia

B. Volvox, Spirogyra, Chlamydomonas

C. Porphyra, Ectocarpus, Ulothrix

D. Sargassum, Laminaria, Gracillaria

**Answer: B**

 [Watch Video Solution](#)

88. Primary lymphoid organs of the human body are

- A. bone marrow and thymus
- B. thymus and lymph nodes
- C. bursa of Fabricius and thymus
- D. both a and c

**Answer: A**

 [Watch Video Solution](#)

89. A chromosome in which the centromere is situated close to its end so that one arm is very short and the other very long is :

- A. Acrocentric
- B. Metacentric

C. Sub-metacentric

D. Telocentric

**Answer: A**



**Watch Video Solution**

**90.** Which of the following drug is a very effective sedative and pain killer, and is very useful in patients who have undergoes surgery ?

A. Cocaine

B. Amphetamine

C. Morphine

D. Heroin

**Answer: C**



**Watch Video Solution**

