



BIOLOGY

BOOKS - NTA MOCK TESTS

NTA NEET SET 109

Biology

1. Identify the correct value.

A. RBC count = 5.5 million/ mm^3 of blood

B. Hb count = 12 - 16 gm/100 ml of blood

C. Platelet count = 1.5 to 3.5 lac/100 ml of blood

D. Neutrophils = 60 - 65% of total WBC.

Answer: C



Watch Video Solution

2. Blood cholesterol reducing agent is:

A. Statins

B. lipase

C. protease

D. zymase

Answer: A



Watch Video Solution

3. A method of vectorless DNA transfer is:

A. Microinjection

B. electroporation

C. biolistics

D. all of these

Answer: D



Watch Video Solution

4. Statement A: Atherosclerosis is a type of Coronary Artery Diseases(CAD).

Statement B: Monocytes are the least abundant granulocytes,

A. Only statement A is correct

B. only statement B is correct

C. Both statements A and B are correct

D. Both statements A and B are incorrect

Answer: A



Watch Video Solution

5. In which of the following option correct example of plants are represented respectively

showing alternate, opposite, and whorled phyllotaxy?

- A. Alstonia, Calotropis and China rose
- B. China rose, Alstonia and Calotropis
- C. Calotropis China rose and Alstonia
- D. China rose, Calotropis and Alstonia

Answer: D



Watch Video Solution

6. What is the correct location of the human kidneys?

- A. Between last lumbar and second sacral
- B. Between third thoracic and last lumbar
- C. Between last thoracic and third sacral
- D. Between last thoracic and third lumbar

Answer: D



Watch Video Solution

7. Read the following statements -

A - Speciation in microbes may occur within a few days.

B. Anteater and numbat show convergent evolution.

C. Branching descent is the concept of Darwin.

How many statements are incorrect?

A. None

B. One

C. Two

D. All

Answer: A



Watch Video Solution

8. Which of the following statement is correct regarding biodiversity ?

A. Medicinal plant *Rauwolfia vomitoria* growing in the Himalayan range show diversity in the synthesis of chemical

colchicine in higher concentration and potential .

B. Eastern Ghat have greater species diversity of amphibians than Western ghat.

C. At the ecosystem level, India , has greater ecosystem diversity than a Scandivavian country like Norway.

D. Biodiversity is the term popularised by the sociobiologist David Tilman.

Answer: C



Watch Video Solution

9. Which of the following cry gene codes for a protein which can control the cotton bollworms?

A. cry I Ac

B. cry II Ab

C. both (a) and (b)

D. cry I Ab

Answer: C



Watch Video Solution

10. Matthias Schleiden examined a sizable amount of plants and revealed the presence of

- A. a - cell which forms tissue
- B. a nucleus inside the cell
- C. a centromere in the chromosome
- D. all of these

Answer: A



Watch Video Solution

11. "The Evil Quartet" is sobriquet used to describe

- A. four major causes of biodiversity losses
- B. four major causes of forest loss
- C. four major causes of air population

D. four major causes of population explosion

Answer: A



Watch Video Solution

12. Select the correct statement-

A. Miller experiment is related to organic evolution.

B. Placental mammals in Australia are result of adaptive radiation.

C. Mutations are directional.

D. Vertebrate hearts represent Analogous organs.

Answer: B



Watch Video Solution

13. In alimentary cannal , pyloric sphincter prevents the entry of food from -

A. oesophagus to stomach

B. stomach to intestine

C. ileum to colon

D. bile duct to the intestine

Answer: B



Watch Video Solution

14. The plasma membrane was discovered by whom and in which year?

A. M. Schleiden , 1839

B. T. Swchwann , 1839

C. Robert Hook, 1838

D. Robert brown, 1839

Answer: B



Watch Video Solution

15. The RNAi process, found only in eukaryotes, is initiated by

- A. ds RNA fragments
- B. ds DNA fragments
- C. ss DNA fragments
- D. ss RNA fragments

Answer: A



Watch Video Solution

16. Match the column I(Ecologist with column II (Concept) and choose the correct option.

	Column I (Ecologist)		Column II (Concept)
(a)	R. May	1.	Effect of species richness on productivity
(b)	A. V. Humboldt	2.	Effect of area exploration on species richness
(c)	D. Tilman	3.	Global species estimation
(d)	P. Ehrlich	4.	Effect of the decline of species on ecosystem

A. a - 1, b - 2, c - 3, d - 4

B. a - 2, b - 1, c - 4 , d - 3

C. a - 1 , b - 2 , c - 4, d - 3

D. a - 3, b - 2, c - 1, d - 4

Answer: D



Watch Video Solution

17. What are the modes of exchange of gases (O_2 and CO_2) at the level of alveoli and tissue respectively ?

A. Active transport, active transport

B. Diffusion, diffusion

C. Diffusion, active transport

D. Active transport, diffusion

Answer: B



Watch Video Solution

18. Mature male gametophyte of Angiosperm shows :

- A. 7 celled, 8 nucleate condition
- B. 8 celled, 7 nucleate condition
- C. 3 celled condition
- D. 6 celled condition

Answer: C



Watch Video Solution

19. Which of the following statement is incorrect?

A. isolated metabolic reactions in vitro are not living things but surely living reactions

B. All organisms from the prokaryotes to the most complex eukaryotes have self-consciousness.

C. The sum total of all the chemical reactions occurring in our body is metabolism.

D. Metabolic reactions can be demonstrated outside the body in cell-free system

Answer: B



Watch Video Solution

20. During decomposition, the process of mineralization by micro-organisms helps in the release of

A. Organic nutrient from the humans

B. Inorganic nutrients from detritus and formation of humas

C. Both organic and inorganic nutrients from detritus

D. Inorganic nutrients from humus

Answer: D



Watch Video Solution

21. Identify the incorrect statement

A. External nostrils leads to nasal chamber.

B. Inner pleural membrane is in contact
with thoracic lining.

C. Rights from the lateral boundary of thoracic chamber.

D. Exchange of gases in alveoli occurs by simple diffusion

Answer: B



Watch Video Solution

22. First cellular form of life on earth appeared

A. 2000 mya

B. 500 mya

C. 4500 mya

D. 3000 mya

Answer: A



Watch Video Solution

23. Which of the following statement is not true ?

A. Food chains are generally short with a few trophic levels as only 10% of the energy is transferred to higher trophic level from lower one.

B. The pyramid of biomass in the sea is generally inverted as the biomass of fish for exceeds that phytoplankton.

C. Pyramid of energy is mostly upright but sometimes it may be inverted

D. Pyramid of numbers and biomass may be either upright or inverted

Answer: C



Watch Video Solution

24. Exine of pollen contains large amount of :

A. Lecithin

B. Sporopollenin

C. Lignin

D. Suberin

Answer: B



Watch Video Solution

25. Causative agents of sleeping sickness and malaria are included respectively in which classes of protozoa?

A. Flagellated and amoeboid protozoa

B. Ciliated protozoa and sporozoa

C. Flagellated protozoa and sporozoa

D. Amoeboid and ciliated protozoa

Answer: C



Watch Video Solution

26. Identify the correct set of a genus of animals represent eutherians-

A. Eryx, Balenoptera, Pan

B. Cavia, Felis, Pteropus

C. Macropus, Desmodus, Leo

D. Rhea, Elephas, Delphinus

Answer: B



Watch Video Solution

27. Which of the following is not the function of tapetum?

A. Secretion of enzyme and hormone

B. Formation of ubisch's body

C. Release of pollen

D. Secretion of pollen kit substance.

Answer: C



Watch Video Solution

28. The complex tissues are made up of

A. same type of cell

B. more than one type of cell

C. cell haivng different structure

D. None of these

Answer: B



Watch Video Solution

29. Among the following statements, incorrect statement is

A. The oceanic reservoir regulate the amount of carbon dioxide in the atmosphere

B. It is estimated that 4×10^{10} kg of carbon is fixed in the biosphere through photosynthesis annually

C. Of the total quantity of global carbon, 71% carbon is found dissolved in ocean

D. Carbon constitutes 49% of the dry weight of organism and is next to the water

Answer: B



Watch Video Solution

30. Some bacteria oxidize various inorganic substances such as nitrates, nitrites , and ammonia and use the released energy for their ATP production? These bacteria are called

- A. archaebacteria
- B. photosynthetic autotrophs
- C. chemosynthetic autotrophs
- D. heterotrophs

Answer: C



Watch Video Solution

31. The cells in the embryo sac located at the micropylar end are :

A. Synergids only

B. Antipodals

C. Egg apparatus

D. Funicle

Answer: C



Watch Video Solution

32. Who concluded from his studies that the presence of a cell wall is a unique feature of plant cells?

A. M. Schleiden

B. T. Swchwann

C. A. V. Leeuwenhoek

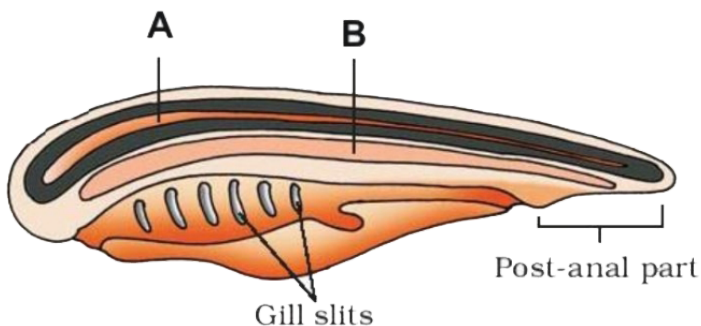
D. Robert Hook

Answer: B



Watch Video Solution

33. The typical body plan of a chordate is given in the following diagram. Given labellings A and B , respectively, are :



A. Nerve cord and notochord

B. Nerve cord and myotomes

C. Notochord and vertebral column

D. Notochord and nerve cord

Answer: A



Watch Video Solution

34. Agaricus, alternaria and Aspergillus are genera of fungi which are included in three different classes. The respective order of these classes will be:

A. Phycomycetes, Ascomycetes and Basidiomycetes

B. Basidiomycetes, Deuteromycetes and Ascomycetes

C. Ascomycetes, Basidiomycetes and Deuteromycetes

D. Basidiomycetes, Phycomycetes and Ascomycetes.

Answer: B



Watch Video Solution

35. Choose the correct option with respect to the genetic makeup of the ABO blood grouping system in humans.

- A. 4 Alleles, 4 phenotype and 6 genotype
- B. 3 Alleles, 6 phenotype and 4 genotypes
- C. 4 Alleles, 6 phenotype and 4 genotypes
- D. 3 Alleles, 4 phenotypes and 6 genotypes

Answer: D



Watch Video Solution

36. The edosperm is completely consumed by the developing embryo in the seeds of :

- A. Maize and rice
- B. Rice and castor
- C. Castor and maize
- D. Pea and beans

Answer: D



Watch Video Solution

37. Given below are four methods (A-D) and their modes of action (i)- (iv) in achieving contraception. Select their correct matching from the four options that follow

Method	Mode of Action
(A) The pill	(i) Prevents sperms reaching cervix
(B) Condom	(ii) Prevents implantation
(C) Vasectomy	(iii) Prevents ovulation
(D) Copper T	(iv) Semen contains no sperms

A. A - (iii) , B - (iv) , C - (i) , D - (ii)

B. A - (ii), B - (iii) , C - (i), D - (iv)

C. A - (iv), B - (i) , C - (ii), D - (iii)

D. A -(iii), B - (i), C - (iv) , D - (ii)

Answer: D



Watch Video Solution

38. Find out the correctly matched option of the causative agent and their disease.

A. Prion-Bovine

Spongiform

Encephalopathy

B. Virus - Citrus Canker disease

C. Viroids - Cr- Jacob disease in human

D. Bacteria- small pox

Answer: A



Watch Video Solution

39. Select the incorrect statement from the following.

A. Other than sexual intercourse, STDs can be transmitted through infected medical

devices, blood transfusion or from mother to foetus

B. Infected females may often be asymptomatic and hence, may remain undetected for long

C. Failure of timely detection and treatment may lead to ectopic pregnancies, pelvic inflammatory diseases and infertility

D. Except HIV, all STIs are completely curable with proper treatment

Answer: D



Watch Video Solution

40. In *Drosophila melanogaster*, what percentage of recombination is shown between the genes white and yellow, and what percentage of linkage is shown between the genes white and miniature wing, respectively?

A. 98.7% and 62.8 %

B. 1.3 % and 37.2%

C. 1.3 % and 62.8%

D. 98.7% and 37.2%

Answer: C



Watch Video Solution

41. Choose the incorrectly matched plant with its vegetative propagule.

A. Eichhornia - offsets

B. Agave - bulbil

C. Kalanchoe - suckers

D. Banana - rhizomes

Answer: C



Watch Video Solution

42. The following three kinds of leaves were exposed to light :

I. Variegated leaf

II. Green leaves partially covered with black paper

III. Green leaf

Presence of starch was seen in

A. Only in the green leaves

B. Both green and variegated leaves

C. All the leaves in which green parts
exposed to light

D. Only variegated leaf

Answer: C





[Watch Video Solution](#)

43. Clot buster is obtained from a genetically modified bacterium belonging to the genus

A. *Saccharomyces*

B. *Monascus*

C. *Trichoderma*

D. *Streptococcus*

Answer: D



[Watch Video Solution](#)

44. Which of the following statements is incorrect regarding sex determination in animals?

A. Grasshoppers , male = autosomes + XO,

female - autosomes +XX

B. Drosophila, males = autosomes + XY,

female = autosomes +XX

C. Birds , females = autosomes + ZW, males

= autosomes + ZZ

D. Insects (XO type), all sperms = one set of
autosomes + X

Answer: D



Watch Video Solution

45. Which of the following statements is not true for class phaeophyceae?

A. Vegetative reproduction takes place by
fragmentation

B. The protoplast contains, in addition to plastids, a centrally located vacuole and nucleus.

C. Sexual reproduction may be isogamous, anisogamous or oogamous.

D. Asexual reproductive by uniflagellate zoospores

Answer: D



Watch Video Solution

46. In the process of transformation, divalent ions are used to make the host component.

The function of such ions is to

A. increase the efficiency of DNA entering the bacterium

B. make the DNA hydrophobic so that it enters the bacterium

C. force the DNA inside the bacterium by applying heat

D. break the DNA into smaller fragments
for better uptake into the bacterium

Answer: A



Watch Video Solution

47. Which of the following shows point mutation?

A. Alteration in DNA sequence

B. Deletion of segment of DNA

C. Change in a single base pair of DNA

D. Gain of a segment of DNA

Answer: C



Watch Video Solution

48. Select the incorrect statement from the following.

A. Bird flu, which is normally seen as a common disease of domesticated fowls,

is a viral disease.

B. Outcrossing is the practice of animal mating within the same breed, with no common ancestors on either side of their pedigree up to 4-6 generations.

C. Rohu and common carp are some common freshwater fishes used for consumption.

D. Pusa komal is a crop variety of chilli which is resistant to bacterial blight.

Answer: D



Watch Video Solution

49. Read the following statements and choose the correct option

I. Failure of segregation of chromatids during cell division results in aneuploidy

(II) Chromosomal disorders are mainly determined by alteration or mutation in a single gene

(III) Thalassemia and cystic fibrosis are

Mendelian disorders

(IV) Sickle cell anemia is an X- linked trait

Itbvrgrt (V) Haemophilia is an autosome linked recessive disease

A. A and C are correct

B. C and D are correct

C. B and D are correct

D. A, C and D are correct

Answer: A



Watch Video Solution

50. In Engelmann's experiment, bacteria were used to

A. split light into its spectral components.

B. detect the sites of O_2 evolution.

C. absorb the spectra of chlorophyll is a and b using *Cladophora*.

D. detect the sites of CO_2 evolution and monitor the algal photosynthesis.

Answer: B



Watch Video Solution

51. Most herbaceous plants have only about _____ of its weight as dry matter.

- A. 10-15%
- B. 90-92%
- C. 30-40%
- D. 1-5%

Answer: A



52. Among the following groups of plants, the correct set of archegoniate plants is:

A. Bryophyta, pteridophyta,

Gymnosperms, angiosperms

B. Algae, bryophyte, pteridophyte

C. Bryophyta, pteridophyte, angiosperm

D. Bryophyta, pteridophyta, gymnosperm

Answer: D



Watch Video Solution

53. "A disease which shows its transmission from unaffected carrier female to some of the male progeny". Find the nature of the trait.

A. Autosomal dominate

B. Autosomal recessive

C. Sex- linked dominant

D. Sex-linked recessive

Answer: D



Watch Video Solution

54. Read the given statement about the human reproductive system.

(A) The uterus is an inverted pear-shaped organ.

(B) Each testis possesses 150 testicular tubules.

(C) Mammary tubules open into the mammary ducts.

How many of the given statements are incorrect ?

A. None

B. One

C. Two

D. Three

Answer: B



Watch Video Solution

55. Select the correct statement about the RNAi method.

A. RNAi strategy was taken up to prevent the infestation of nematodes in the roots maize plants.

B. This method involves the use of a complementary dsRNA molecule that binds to and prevents translation of the mRNA

C. Only RNA genomes of viruses can be used as a source for the complementary RNA

D. Mobile genetic elements called

transposons can replicate only through

a DNA intermediate

Answer: B



Watch Video Solution

56. Resource partitioning is a mechanism which has been used to promote co-existence among closely related species rather than exclusion. In MacArthur's studies, he showed

that species of warblers living on the same tree avoided competition due to

A. behavioural difference in foraging patterns.

B. Timing differences in their feeding patterns.

C. Both behavioural and timing differences in foraging and feeding patterns, respectively.

D. Certain differences in behaviour which had nothing to do with foraging for feeding

Answer: A



Watch Video Solution

57. The index to the plant species found in a particular area is provide in:

A. Flora

B. Monographs

C. Manuals

D. Catalogue

Answer: A



Watch Video Solution

58. Match the columns:

Column - A	Column - B
A. Hypothyroidism	1. Sleep awake cycle
B. Vasopressin	2. Source pituitary gland
C. Melatonin	3. Reduction in water loss from the body
D. MSH	4. Irregular menstrual cycle

A. A-3, B-4 ,C-1, D-2

B. A-3, B-4 ,C-2, D-1

C. A-4, B-3 ,C-1, D-2

D. A-4, B-3 ,C-2, D-1

Answer: C



Watch Video Solution

59. In a eukaryotic cell during transcription enzymes RNA polymerase I, II and III are used respectively for the formation of:

A. m- RNA , t - RNA and 5S r- RNA

B. t-RNA, 28S r- RNA and m-RNA

C. 5.8S r-RNA, hn- RHA and and t- RNA

D. 18Sr- RNA , t-RNA and m- RNA

Answer: C



Watch Video Solution

60. Which of the following is not related to follicular phase of the menstrual cycle?

- A. Development of Graafian follicle
- B. Regeneration of lost endometrium
- C. Release of estrogen hormone
- D. Endometrium becomes secretory

Answer: D



Watch Video Solution

61. Insulin acts upon:

- A. Hepatocytes but no effect on adipocytes

B. Adipocytes but no effect on hepatocytes

C. Hepatocytes and adipocytes both

D. Neither hepatocytes nor on adipocytes

Answer: C



Watch Video Solution

62. Read the following statements and choose the incorrect statement.

A. Mango tree do not and cannot grow in tropical countries like Canada and Germany.

B. Snow leopards are not found in Kerala forests

C. Tuna fish are rarely caught beyond tropical latitudes in the ocean.

D. Both (B) and (C) are correct

Answer: A



Watch Video Solution

63. All of the following hormones are released from GIT except:

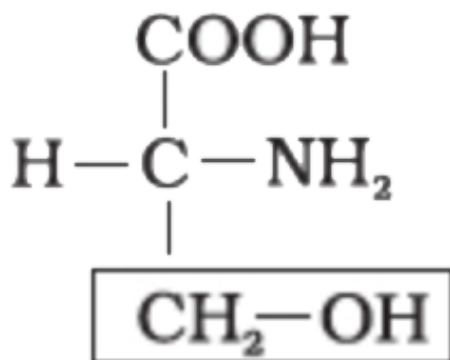
- A. Gastrin
- B. CCK
- C. Erythropoetin
- D. Secretin

Answer: C



Watch Video Solution

64. The given structure corresponds to :



A. Glycine

B. Alanine

C. Serine

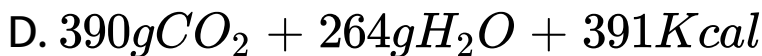
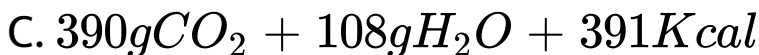
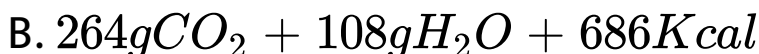
D. None of these

Answer: C



Watch Video Solution

65. In cellular respiration, from 180 g of glucose which of the following is formed ?



Answer: B



66. Which of the following can result in breaking of hymen?

- A. Sports like riding or cycling
- B. Intercourse
- C. Sudden fall
- D. More than one option is correct

Answer: D



67. Corpora quadrigemina is found inportion of

A. Ventral , Forebrain

B. Ventral, Midbrain

C. Dorsal, Forebrain

D. Dorsal, Midbrain

Answer: D



Watch Video Solution

68. How many nucleosomes are present in DNA of a human cell?

A. 6.6×10^9

B. 3.3×10^9

C. 6.6×10^7

D. 3.3×10^7

Answer: D



Watch Video Solution

69. In which animal, nerve cell is present but brain is absent ?

A. Sponge

B. Earthworm

C. Cockroach

D. Hydra

Answer: D



Watch Video Solution

70. Suppose the gene of interest is inserted as PstI site in pBR322, the resulting plasmid will confer resistance to :

A. Ampicillin

B. Penicillin

C. Ampicillin and tetracycline

D. Tetracycline

Answer: D



Watch Video Solution

71. Select incorrect pairing:

A. Apocarpous - carpels free - lotus, rose

B. Syncarpous - carpels fused - mustard,
tomato

C. Axile Placentation - lemon, tomato

D. Formation of false septum - mustard,
Dianthus

Answer: D



Watch Video Solution

72. In Arcata marshes, cleaning of wastewater involves :

A. Utilization of microorganism only for pollution control

B. Filtration chlorination like chemical process

C. Removal of dissolved heavy metals through biological process

D. Only conventional method sewage treatment

Answer: C



Watch Video Solution

73. Macronutrients are present in plant tissue in an amount :

A. gt 10 mol/kg of dry matter

B. gt 10 mmol/kg of dry matter

C. It 10 nmol/kg of dry matter

D. It 10 mmol/kg of dry matter

Answer: B



Watch Video Solution

74. Which set of sign and symptoms are related to pneumonia?

A. Infection in nasal cavity, headache, pain in stomach

B. Infection in alveoli, chills , fever and cough

C. Sore throat, nasal discharge and constipation

D. Intestinal infection, persistent fever.

Answer: B



Watch Video Solution

75. Match the following and mark the correct option.

	Column I		Column II
(A)	Fast muscle fibres	(i)	Myoglobin
(B)	Slow muscle fibres	(ii)	Lactic acid
(C)	Actin filament	(iii)	Contractile unit
(D)	Sarcomere	(iv)	I-band

A. A - i, B - ii, C - iv, D - iii

B. A - ii, B - i, C - iii, D - iv

C. A - ii, B - i, C - iv, D - iii

D. A - iii, B - ii, C - iv, D - i

Answer: C



Watch Video Solution

76. Ti plasmid is being used as cloning vectors for:

A. Animals

B. Plants

C. Bacteria

D. Both (A) and (B)

Answer: B



77. Read the following statements carefully and find the incorrect statements:

- A. More than 1 percent impurities make domestic sewage unfit for human use.
- B. Less BOD causes mortality of fish and other aquatic creatures.
- C. Presence of large amounts of nutrients in water also causes excessive growth of planktonic algae, called an algal bloom.
- D. Algal bloom causes deterioration of the

water quality and decreases fish mortality.

E. Some bloom-forming algae are extremely toxic to human beings and animals.

F. *Eichhornia crassipes* is the world's most problematic aquatic weed.

A. A, C, E and F

B. C, E and F

C. A, B and D

D. All are correct

Answer: C



78. Which is the longest phase of cell cycle

- A. Interphase
- B. Mitotic phase
- C. Meiotic phase
- D. Both (B) and (C)

Answer: A



Watch Video Solution

79. Which of the following parts are used for the development of fruit in mango and coconut?

A. Polycarpellary superior ovaries and is one seeded

B. Polycarpellary superior ovaries and are many seeded

C. Monocarpellary superior ovaries and are one seeded

D. Monocarpellary inferior ovaries and are many seeded

Answer: C



Watch Video Solution

80. Which part of the skull is connected with the vertabral column?

A. Temporal bone

B. Occipital condyles

C. Parietal bone

D. Mandible

Answer: B



Watch Video Solution

81. Read the statements (A - E) and answer the question following them.

A - Rheumatoid arthritis is an auto-immune disease.

B - During allergy, IgA type antibodies

increases in plasma.

C- Injection given to patients of snakebite, possess antibiotics.

D- Humoral immunity is because of B-cells.

E- Interferons are an example of a cytokine barrier.

Identify the number of true statements?

A. One

B. Two

C. Three

D. Four

Answer: D



Watch Video Solution

82. In flowering plants, the substance that would need to be transported are :

- A. Water and mineral nutrients
- B. Organic nutrients
- C. Plant growth regulators
- D. All of these

Answer: D



Watch Video Solution

83. Select the incorrect statement.

- A. In each segment, the exoskeleton has hardened plates called sclerites, sternites dorsally and tergites ventrally
- B. The entire body is covered by a hard chitinous exoskeleton (brown in colour).

C. Head is triangular in shape and lies anteriorly at right angles to the longitudinal body axis.

D. A pair of thread - like antennae arise from membranous sockets lying in front of eyes.

Answer: A



Watch Video Solution

84. In which of the following option members of the same family are present?

A. Gram, Indigofera, petunia, colchicine

B. Soyabean, mulathi, ashwagandha and
Asparagus

C. Tomato, chilli, belladonna and tobacco

D. Gloriosa, Aloe, Seabania and Trifolium

Answer: C



Watch Video Solution

85. In prophase I, the stage that closely resembles prometaphase of mitosis is :

A. Diplotene

B. Chiasmata

C. Leptotene

D. Diakinesis

Answer: D



Watch Video Solution

86. Apical dominance can be overcome by application of :

A. GA

B. Cytokinin

C. Ethylene

D. Auxin

Answer: B



Watch Video Solution

87. Identify the given plants:



Plant A



Plant B

A.

Plant A	Plant B
<i>Erythroxylum coca</i>	<i>Datura</i>

B.

Plant A	Plant B
<i>Cannabis sativa</i>	<i>Datura</i>

C.

Plant A	Plant B
<i>Datura</i>	<i>Opium</i>

D.

Plant A	Plant B
<i>Datura</i>	<i>Cannabis sativa</i>

Answer: C



Watch Video Solution

88. The mucosal lining of which organ differs from others in concerned with the number of layers of the cell (simple/stratified):

- A. Stomach
- B. Small intestine
- C. PCT
- D. Oesophagus

Answer: D



[Watch Video Solution](#)

89. Environmental heterophylly is found in:

A. Cotton

B. Larkspur

C. Coriander

D. Buttercup

Answer: D



[Watch Video Solution](#)

90. Find the correct option :

	Column: A		Column: B
(A)	Parenchyma	1.	Living tissue that provides mechanical support
(B)	Collenchyma	2.	Food storage
(C)	Sclerenchyma	3.	Dead tissue that provides mechanical support

A. (A) - 1, (B) - 2, (C) - 3

B. (A) - 2, (B) - 1, (C) - 3

C. (A) - 1 & 2, (B) - 2, (C) - 3

D. None of these

Answer: D





Watch Video Solution