



## BIOLOGY

### BOOKS - NTA MOCK TESTS

#### NTA NEET SET 19

##### Biology

1. What happens during fertilization in humans after many sperms reach close to the ovum?

- A. All sperms except the one nearest to the ovum lose their tails
- B. Cells of corona radiata trap all the sperms except one
- C. Only two sperms nearest the ovum penetrate zona pellucida

D. Secretions of acrosome helps one sperm enter cytoplasm of ovum through zona pellucida

**Answer: D**



**Watch Video Solution**

2. The example of the trait that is controlled by many genes in human beings is

- A. skin colour
- B. phenylketonuria
- C. colour blindness
- D. sickle cell anaemia

**Answer: A**



**Watch Video Solution**

3. In a typical Mendelian cross, which is a dihybrid cross, one parent is homozygous for both dominant traits and another parent is homozygous for both recessive traits. In the  $F_2$  - generation, both parental combination and recombination appear. The phenotypic ratio of parental combinations to recombination is

A. 0.42083333333333

B. 0.50277777777778

C. 0.37986111111111

D. 0.62569444444444

**Answer: A**



**Watch Video Solution**

4. How many statement is/are true?

- i. The primary root and its branches constitute the tap root system.
- ii. In monocot the primary root is short lived.
- iii. The root that arises from other part of the plane other than radicle is called adventitious root

A. Two

B. Three

C. One

D. None of these

**Answer: B**



**Watch Video Solution**

5. Organ of corti is located on the \_\_\_\_\_

- A. Basilar membrane
- B. Basement membrane
- C. Reissner membrane
- D. synovial membrane

**Answer: A**



**Watch Video Solution**

6. The grade of organisation in sponges is

- A. cellular grade
- B. cell-tissue grade
- C. protoplasmic grade

D. organ-system grade

**Answer: A**



**Watch Video Solution**

7. Which of these cells are known to regulate cell-mediated immunity in the human body?

A. helper B-cells

B. killer B-cells

C. suppressor cells

D. suppressor T-cells

**Answer: D**



**Watch Video Solution**

8. The study of trends in human population growth and the prediction of future development is known as

- A. Sociology
- B. Geography
- C. Demography
- D. Anthropology

**Answer: C**



**Watch Video Solution**

9. Acromegaly is caused by :

- A. Excess of growth hormone
- B. Excess of thyroxin

C. Deficiency of thyroxin

D. Excess of adrenalin

**Answer: A**



**Watch Video Solution**

**10. Which of the following is hormone-releasing IUD ?**

A. LNG-20

B. Multiload-375

C. Lippes loop

D. Cu-7

**Answer: A**



**Watch Video Solution**



11. Pericycle of roots produces

- A. Mechanical support
- B. Lateral roots
- C. Vascular bundles
- D. Adventitious buds

**Answer: B**



**Watch Video Solution**

12. Roundworms are different from platyhelminthes in which of the following feature/s?

- A. Roundworms are triploblastic
- B. Roundworms have a complete digestive system

C. Roundworms have flame cells

D. All of the above

**Answer: B**



**Watch Video Solution**

**13.** Which one of the following is not a gaseous biogeochemical cycle in ecosystem?

A. Oxygen cycle

B. Phosphorus cycle

C. Nitrogen cycle

D. Carbon cycle

**Answer: B**



**Watch Video Solution**

14. The new varieties of plants are produced by

- A. Selection and hybridisation
- B. Mutation and selection
- C. Introduction and mutation
- D. Selection and introduction

**Answer: A**



Watch Video Solution

15. Photochemical smog does not contain

- A. Nitrogen dioxide
- B. Carbon dioxide

C. PAN (peroxy acyl nitrate)

D. Ozone

**Answer: B**



**Watch Video Solution**

**16.** The telomeres of eukaryotic chromosomes consist of short sequences of

A. Thymine rich repeats

B. Cytosine rich repeats

C. Adenine rich repeats

D. Guanine rich repeats

**Answer: D**



**Watch Video Solution**

17. Which one is a true statement regarding DNA polymerase used in PCR

- A. It is used to ligate introduced DNA in recipient cell
- B. It serves as a selectable marker
- C. It is isolated from a virus
- D. It remains active at high temperature

**Answer: D**



Watch Video Solution

18. Biodiversity of a geographical region represents

- A. Endangered species found in the region.

- B. The diversity in the organisms living in the region
- C. Genetic diversity present in the dominant species of the region
- D. Species endemic to the region

**Answer: B**



**Watch Video Solution**

**19. Movement of sperm is due to**

- A. Sperm tail
- B. Sperm head
- C. Acrosome of the sperm
- D. Middle piece of the sperm

**Answer: A**



**Watch Video Solution**

**20. The wings of pigeon, butterfly and bat show**

- A. Divergent evolution
- B. Atavism
- C. Convergent evolution
- D. All of these

**Answer: C**



**Watch Video Solution**

**21. Extermities of long bones possess cartilage**

A. Calcified

B. Fibrous

C. Elastic

D. Hyaline

**Answer: D**



**Watch Video Solution**

**22. Which one of the following is not a biofertilizer?**

A. Agrobacterium

B. Rhizobium

C. Nostoc

D. Mycorrhiza



**Answer: A**



**Watch Video Solution**

**23.** Ribulose diphosphate carboxylase oxygenase is location in

A. Mitochondria

B. Chloroplasts

C. Peroxisomes

D. Golgi bodies

**Answer: B**



**Watch Video Solution**

24. The process of migration of chloride ions from plasma to RBC and of carbonate ions from RBC to plasma is

- A. Chloride shift
- B. Ionic shift
- C. Atomic shift
- D. Na pump

**Answer: A**



**Watch Video Solution**

25. The polio virus enters the human body through

- A. Mosquito bite
- B. Tick bite

C. Saliva and secretions from the nose

D. Contaminated food and water

**Answer: D**



**Watch Video Solution**

**26. Which is the basis of evolution?**

A. cellular grade

B. Individual

C. Population

D. Species endemic to the region

**Answer: D**



**Watch Video Solution**

27. The  $C_4$  plants are different from  $C_3$  plants with reference to the

- A. Primary  $CO_2$  acceptor
- B. End product of photosynthesis
- C. Types of pigments involved in photosynthesis
- D. Both end products of photosynthesis and types of photosynthetic pigments

**Answer: A**



**Watch Video Solution**

28. The population of an insect species shows an explosive increase in numbers during rainy season followed by its disappearance at the end of the season. What does this show ?

- A. S-shaped or sigmoid growth of this insect
- B. The food plants mature and die at the end of raint season
- C. Its population growth curve is of J-type
- D. The population of its predators increase enormously

**Answer: C**



**Watch Video Solution**

**29.** Pericarp is formed of

- A. Endosperm
- B. Ovary wall
- C. Tapetum
- D. Epidermis

**Answer: B**



**Watch Video Solution**

**30.** The dwarfness in plants of  $F_2$  feneration is

- A. Recessive
- B. Dominant
- C. Co-dominant
- D. In-complete dominance

**Answer: A**



**Watch Video Solution**

**31.** In higher vertebrates, the immune system can distinguish self-cells and non-self. If this property is lost due to genetic abnormality and it attacks self-cells, then it leads to

- A. Allergic response
- B. Graft rejection
- C. Autoimmune disease
- D. Active immunity

**Answer: C**



**Watch Video Solution**

**32.** Which of the following is the correct sequence of events in the origin of life

- I. Formation of protobionts

II. Synthesis of organic monomers

III. Synthesis of organic polymers

IV. Formation of DNA-based genetic systems

A. I,ii,iii,iv

B. I,iii,ii,iv

C. ii,iii,i,iv

D. ii,iii,iv,i

**Answer: C**



**Watch Video Solution**

**33.** How many different types of gametes will be formed by a pea plant with genotype TtYy upon self fertilization?

A. 16



B. 8

C. 6

D. 4

**Answer: D**



**Watch Video Solution**

**34.** Which one of the following pairs of terms/names mean one and the same thing

A. Gene pool-genome

B. Cistron-triplet

C. DNA fingerprinting-DNA profiling

D. Codon-gene

**Answer: C**



**Watch Video Solution**

**35.** Which one of the following is the incorrect matching of the events occurring during the menstrual cycle?

- A. The tertiary follicle further changes into the mature follicle or Graafian follicle.
- B. Development of corpus luteum in the proliferative phase with increased secretion of progesterone.
- C. The secondary oocyte forms a new membrane called zona pellucida.
- D. The Graafian follicle ruptures to release the secondary oocyte (ovum) from the ovary by the process called

ovulation.

**Answer: B**



**Watch Video Solution**

**36.** The latest trend in plant disease control is

- A. Chemical control
- B. Biological control
- C. Good manure and fertilizer
- D. Breeding for disease resistance

**Answer: B**



**Watch Video Solution**

**37.** The birth control measure that is related to males is

- A. Oral pill
- B. Tubectomy
- C. Vasectomy
- D. None of these

**Answer: C**



**Watch Video Solution**

**38.** Two organs which are similar in structure and origin, but not necessarily in function are called

Or

The organs of different species that are related to each other through common descent though becomes functionally different are called

- A. Homologous
- B. Analogous
- C. Apocrine
- D. None of these

**Answer: A**



**Watch Video Solution**

**39.** In the five kingdom system of classification which single kingdom out of the following can include blue - green algae, nitrogen fixing bacteria and methanogenic archaebacteria

- A. Fungi
- B. Plantae
- C. Protista

D. Monera

**Answer: D**



**Watch Video Solution**

**40.** The shoulder blade is called as

A. Clavicle

B. Humerus

C. Ilium

D. Scapula

**Answer: D**



**Watch Video Solution**

**41.** Disjunction is

- A. Chromosomes separation during mitosis
- B. Chromosomes separation during prophase I
- C. Chromosomes separation in anaphase I
- D. Chromosomes separation during metaphase I

**Answer: C**



**Watch Video Solution**

**42.** In progressive senescence, the leaves fall

- A. Immediately
- B. Gradually
- C. No falling

D. Leaf become permanently affixed

**Answer: B**



**Watch Video Solution**

**43.** The characteristics of a molecular probe are  
(I) Very long molecule

(II) Double stranded

(III) DNA or RNA

(IV) Complementary to a part of desired gene the correct pair is

A. I and ii

B. ii and iii

C. iii and iv

D. iv and i



**Answer: C**



**Watch Video Solution**

**44.** Identify the correct type of food chain.

Dead animal → Blowfly maggots → Common frog → Snake:

- A. Grazing food chain
- B. Detritus food chain
- C. Decomposer food chain
- D. Predator food chain

**Answer: B**



**Watch Video Solution**

**45. What is not true for the genetic code?**

- A. It is nearly universal
- B. It is degenerate
- C. It is unambiguous
- D. A codon in mRNA is read in a non-contiguous fashion

**Answer: D**



**Watch Video Solution**

**46. Parthenogenesis is a form of :**

- A. Sexual reproduction
- B. Asexual reproduction
- C. Budding

D. Regeneration

**Answer: B**



**Watch Video Solution**

**47. Keel is characteristic of the flower of**

A. Gulmohur

B. Cassia

C. Calotropis

D. Bean

**Answer: D**



**Watch Video Solution**

48. How many factors shift the oxygen dissociation curve to the right shift?

- i Low partial pressure of oxygen
- ii High concentration of carbon dioxide
- iii High number of hydrogen ions
- iv Low body temperature
- v Daily exercise
- vi Haemoglobin of babies or fetal haemoglobin

A. 6

B. 5

C. 4

D. 3

**Answer: C**



**Watch Video Solution**

**49.** Select the incorrect statement with respect to centrioles.

- A. Cartwheel-like organization
- B. They are made up of nine evenly spaced peripheral fibrils of tubulin
- C. The central part is non-proteinaceous and called the hub
- D. They form the basal body of cilia or flagella.

**Answer: C**



**Watch Video Solution**

**50.** Read the following statements carefully and select correct option

(a) In zoological parks, conditions similar to natural habitats are provided to animals

- (b) Keys are generally analytical in nature
- (c) In herbarium sheet, local names are not mentioned
- (d) Taxonomical aids are useful in knowing bioresources

- A. Only (a) and (b)
- B. (a), (c) and (d)
- C. (a), (b) and (d)
- D. All of the above

**Answer: C**



**Watch Video Solution**

**51. The role of molybdenum is:**

- A. Nitrogen metabolism
- B. Carbon assimilation

C. Flowering induction

D. Chromosome contraction

**Answer: A**



**Watch Video Solution**

**52.** Trypsinogen is converted into active trypsin by the action of

A. Cholecystokinin

B. Enterogastrogen

C. Enterokinase

D. Secretin

**Answer: C**



**Watch Video Solution**

**53.** The outer layer of pollen is made up of :

- A. Pollenin
- B. Sporopollenin
- C. Pectin
- D. Cellulose

**Answer: B**



**Watch Video Solution**

**54.** Which of the following is an example of saprophytes?

- A. Agraricus
- B. Lichen
- C. Chlamydomonas



D. Ferns

**Answer: A**



**Watch Video Solution**

**55.** In the thin filament of skeletal muscle fibre, a small globular protein, that masks the active sites on the F-actin is

A. G-actin

B. Actin

C. tropomyosin

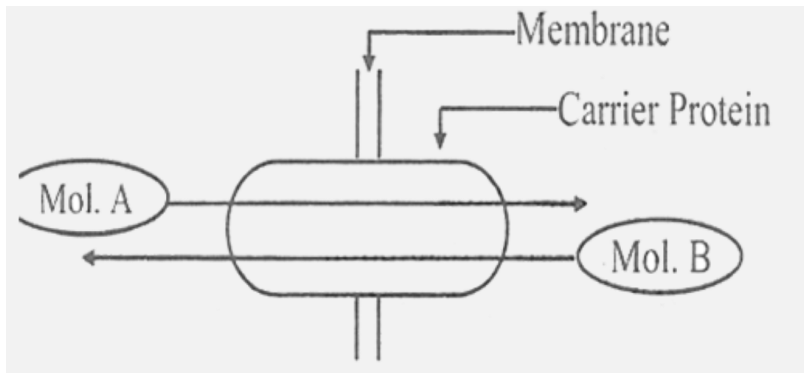
D. Troponin

**Answer: D**



**Watch Video Solution**

56. Look at the following diagram showing facilitated diffusion across the membrane. Identify its type.



- A. Symport
- B. Uniport
- C. Antiport
- D. Multiport

**Answer: C**



**Watch Video Solution**

**57.** The intrameiotic interphase is called:

- A. interphase
- B. cytokinesis
- C. Interkinesis
- D. Karyokinesis

**Answer: C**



**Watch Video Solution**

**58.** Which one of the following pairs of plant structures has haploid number of chromosomes

- A. Nucellus and antipodal cells
- B. Egg nucleus and secondary nucleus
- C. Megaspore mother cell and antipodal cells

D. Egg cell and antipodal cells

**Answer: D**



**Watch Video Solution**

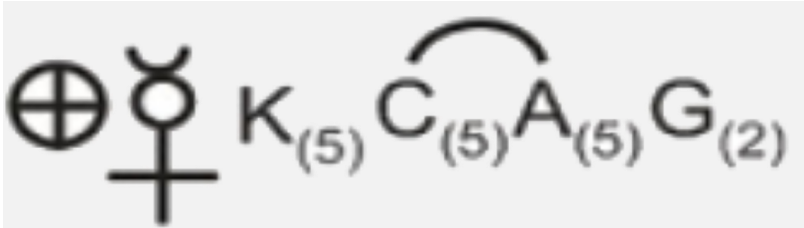
**59.** Which of the following statements is not true for retroviruses

- A. Retroviruses are causative agents for certain kinds of cancer in man.
- B. The genetic material in mature retroviruses is RNA.
- C. Retroviruses carry the gene for RNA - dependent DNA polymerase.
- D. DNA is not present at any stage in the life cycle of retroviruses.

Answer: D



Watch Video Solution



60. is the floral formula of :

- A. Liliaceae
- B. Solanaceae
- C. Asteraceae
- D. Fabaceae

Answer: B



Watch Video Solution

**61.** In the chemistry of vision in mammals, the photosensitive substance is called

- A. Melatonin
- B. Retinol
- C. Rhodopsin
- D. Melanin

**Answer: C**



**Watch Video Solution**

**62.** Seed and bud dormancy can be induced by

- A. IAA

B. GA

C. ABA

D. Ethylene

**Answer: C**



**Watch Video Solution**

**63.** Which of the following processes and techniques are included under biotechnology?

A. Silencing of the gene to develop pestresistant plants.

B. Synthesizing gene and using it.

C. Developing a DNA vaccine.

D. Correcting a defective gene.

A. C and D only

B. B, C and D

C. A and B

D. A, B, C and D

**Answer: D**



**Watch Video Solution**

**64.** The enzyme activity can be completely stopped by

A. Removing its product as fast as it is formed

B. Doubling its concentration

C. Decreasing its concentration

D. Blocking its active site

**Answer: D**



**Watch Video Solution**



**65.** The fusion of male and female gamete in *Chlamydomonas* is called

- A. Syngamy
- B. Oogamy
- C. Isogamy
- D. Anisogamy

**Answer: D**



**Watch Video Solution**

**66.** Which of the following is absorbed in the stomach?

- A. Fatty acid
- B. Amino acid

C. Drugs

D. Simple sugars

**Answer: D**



**Watch Video Solution**

**67.** In glycogen, the right end of the polysaccharide chain is called

A. Non - reducing end

B. C - terminal

C. Reducing end

D. N - terminal

**Answer: C**



**Watch Video Solution**

68. In human beings, the membrane of the erythrocyte has approximately \_\_\_\_\_(i)\_\_\_\_\_ protein and \_\_\_\_\_(ii)\_\_\_\_\_ lipids.

A. (i) 40%, (ii) 52%

B. (i) 34%, (ii) 58%

C. (i) 52%, (ii) 40%

D. (i) 58%, (ii) 34%

**Answer: C**



**Watch Video Solution**

69. Which of the following organism is likely to have more concentration of D.D.T. in its body?

- A. Herbivores
- B. Carnivores
- C. Top carnivores
- D. Primary producers

**Answer: C**



**Watch Video Solution**

**70.** In the following which one is the example of Bryophyta that has elaborate mechanism of spore dispersal?

- A. Polysiphonia
- B. Polytrichum
- C. Dictyota
- D. Marchantia

**Answer: B**



**Watch Video Solution**

**71. Ginger is a**

- A. Bulb
- B. Tuber
- C. Rhizome
- D. Corn

**Answer: C**



**Watch Video Solution**

**72. The number of chromosome in meiocyte of butterfly is**

A. 1260

B. 20

C. 380

D. 8

**Answer: C**



**Watch Video Solution**

**73.** Some of the enzymes, which are associated with the digestion of proteins, lipids and nucleic acids, are present in

A. Lysosomes

B. Liposomes

C. Microsomes

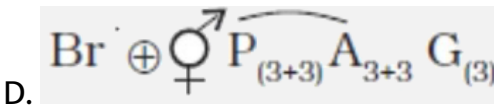
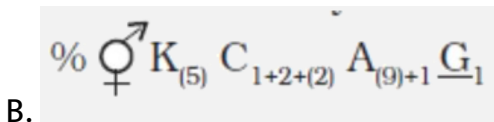
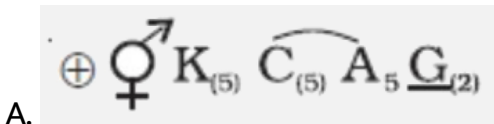
D. Glyoxysomes

Answer: A



Watch Video Solution

74. The floral formula for Brassicaceae family is



Answer: C



Watch Video Solution

75. When a tall plant was self - pollinated, one - fourth of the progeny were dwarf. The genotypes of the parent and dwarf progenies are

A. TT, Tt

B. Tt, tt

C. Tt, Tt

D. TT, TT

**Answer: B**



**Watch Video Solution**

76. In which of the following organism, pigments are similar to that found in higher plants?

A. Nostoc



B. Euglena

C. Gonyaulax

D. Slime mould

**Answer: B**



**Watch Video Solution**

77. for respiratory enzymes are given below. Arrange them in increasing order of the carbon number of the substrates on which they act

Enolase (ii) Aconitase

(iii) fumerase (iv) Alcohol dehydrogenase

A. II, IV, III, I

B. IV, I, II, III

C. I, IV, III, II

D. IV, I, III, II

**Answer: D**



**Watch Video Solution**

**78.** Lenticles are formed by rupturing of the epidermis by

A. Collenchyma cells

B. Parenchyma cells

C. Sclerenchyma cells

D. Vascular cambium

**Answer: B**



**Watch Video Solution**

**79.** Which of the following hormones of the human body are not secreted by an endocrine gland?

- A. Parathyroid hormone
- B. Growth hormone
- C. ANF
- D. Thyroxine

**Answer: C**



**Watch Video Solution**

**80.** Which organism behaves like plants in the presence of light and absence of organic food, but in reverse conditions behaves like animals?

A. Archaeobacteria

B. Euglena

C. Nostoc

D. Paramecium

**Answer: B**



**Watch Video Solution**

**81.** Which of the following statements are true/false ?

- i. Thyrocalcitonin regulates the homeostasis of blood calcium levels.
- ii. Oxytocin stimulates contraction of uterine muscles during birth.
- iii. "Grave's disease" is caused by malfunctioning of the adrenal gland.

iv. ADH stimulates the absorption of water and increase urine production.

A. I and ii are true , ii and iv are false

B. I and ii are true , iii and iv are false

C. I and iv are false, ii and iii are true

D. I, ii, iii, are true iv only false

**Answer: B**



**Watch Video Solution**

**82.** Each artery and vein consists of three layers: an inner lining of \_\_\_\_\_(i)\_\_\_\_\_ endothelium, the tunica intima, a middle layer of \_\_\_\_\_(ii)\_\_\_\_\_ and \_\_\_\_\_(iii)\_\_\_\_\_ fibres, the tunica media, and an external layer of \_\_\_\_\_(iv)\_\_\_\_\_ tissue with \_\_\_\_\_(v)\_\_\_\_\_ fibres, the tunica externa.

A.

(i)	(ii)	(iii)	(iv)	(v)
squamous	smooth muscles	collagen	connective	elastic

B.

(i)	(ii)	(iii)	(iv)	(v)
squamous	smooth muscles	elastic	connective	collagen

C.

(i)	(ii)	(iii)	(iv)	(v)
squamous	connective	collagen	smooth muscles	elastic

D.

(i)	(ii)	(iii)	(iv)	(v)
squamous	connective	elastic	smooth muscles	collagen

**Answer: B**



**Watch Video Solution**

**83.** Which of the following set represent the effect of noise pollution on human health?

- A. Sleeplessness, increased heart beat, and altered breathing pattern
- B. Sleeplessness decreased heart beat, and altered breathing pattern
- C. Sleeplessness, irritation of respiratory system, and altered breathing pattern
- D. Sleeplessness, irritation of respiratory system, and inflammed lungs

**Answer: D**



**Watch Video Solution**

**84.** Which of the following types of leucocytes is characterized by the presence of the S - shaped nucleus?

A. Eosinophil

B. Basophil

C. Neutrophil

D. Monocyte

**Answer: B**



**Watch Video Solution**

**85.** Select the correct option.

Cause (s) of species extinction is/are :

a. Introduction of exotic species

b. Habitat destruction

c. Overexploitation

A. Options a and b only



B. Options a and c only

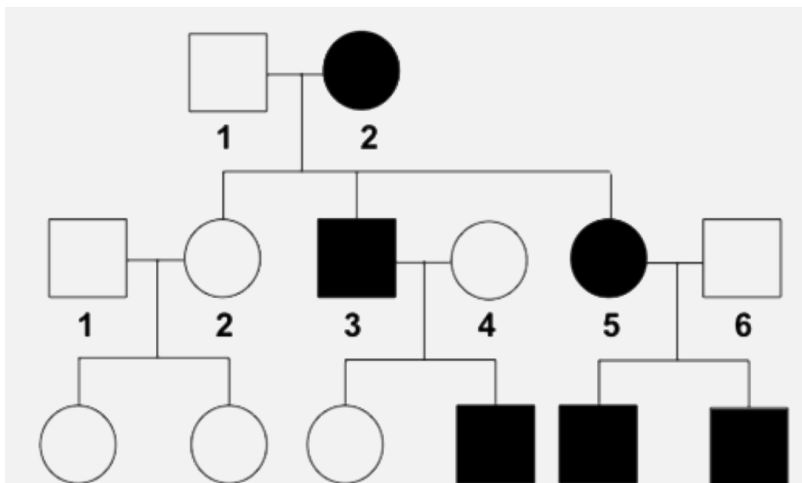
C. Options b and c only

D. All the 3 options

**Answer: D**

 **Watch Video Solution**

**86.** Analyze the given pedigree chart and select the option that is correct regarding it.



- A. Autosomal dominant trait - Crystic fibrosis
- B. Sex - linked dominant trait - Myotonic dystrophy
- C. Autosomal dominant trait - Myotonic dystrophy
- D. Autosomal recessive trait - Phenylketonuria

**Answer: C**



**Watch Video Solution**

**87. Antennary glands of crustaceans are meant for**

- A. Excretion
- B. Respiration
- C. Digestion
- D. Circulation

**Answer: A**



**Watch Video Solution**

**88.** Three of the following statements regarding cell organelles are correct while one is wrong. Which one is wrong.

A. Lysosomes are single - membrane vesicles budded off from Golgi apparatus and contain digestive enzymes

B. Endoplasmic reticulum consists of a network of membranous tubules and helps in transport, synthesis, and secretion

C. Leucoplasts are bound by a single membrane, lack pigment but contain their own DNA and protein - synthesizing machinery.

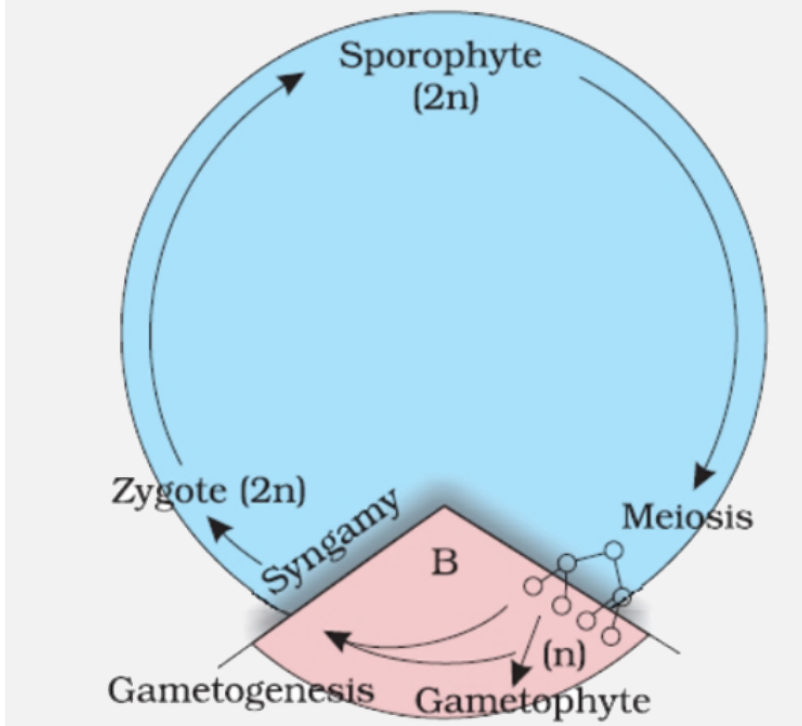
D. Sphaerosomes are single membrane - bound and are associated with synthesis and storage of lipids

**Answer: C**



**Watch Video Solution**

**89.** Analyze the given life cycle of plants and select the plants which represent such a life cycle.



- A. Volvox
- B. Fucus
- C. Spirogyra
- D. Chlamydomonas

**Answer: B**



**Watch Video Solution**

90. Asci are sexually reproductive structures formed in

- A. Morels
- B. Saccharomyces
- C. Calviceps
- D. All the above

**Answer: D**



**Watch Video Solution**