

BIOLOGY

BOOKS - NTA MOCK TESTS

NTA NEET SET 35

Biology

1. Viroids have

- A. double stranded DNA enclosed by a protein coat
- B. double stranded RNA enclosed by a protein coat
- C. single stranded RNA not enclosed by a protein coat
- D. single stranded DNA not enclosed by a protein coat

Answer: C



Watch Video Solution

2. Fungi imperfecti (Deuteromycetes) lack

A. spores

B. sexual reproduction

C. asexual reproduction

D. hyphae

Answer: B



Watch Video Solution

3. To enter or leave a cell, the substance must pass throughand its structure was explained by in the year

A. *P* *Q* *R*
the cell wall the cell theory 1978

B. *P* *Q* *R*
the plasma membrane, the cell theory 1942

C. *P* *Q* *R*
the cell wall the fluid mosaic model 1975

D.

P *Q* *R*
the plasma membrane, the fluid mosaic model 1972

Answer: D



Watch Video Solution

4. Which of the following statements is not correct regarding circulation of cockroaches ?

- A. Blood vascular system in open type.
- B. Blood vascular are poorly developed.
- C. Blood vascular open into haemocoel.
- D. Visceral organs do not bath in haemolymph.

Answer: D



Watch Video Solution

5. Find incorrect match with respect to cell organelles given

below.

- a. ER
- b. Golgi bodies
- C. Plastids
- d. Mitochondria

e. Vacuole

f. Peroxisome

g. Lysosome

A. Endomembrane system - a, b, e and g

B. Glycoproteins , glycolipids and lysosomes formation ,
site of phosphorylation - b, c,d

C. Acid phosphatase , heterophagosome , glycolate
metabolism , tonoplast - g, f, e

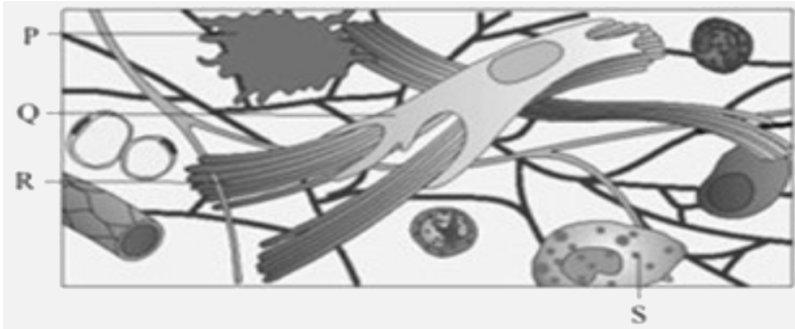
D. Binary fission , circular DNA , 80 S ribosome , double
membranous - c , d

Answer: A



Watch Video Solution

6. A diagram of areolar connective tissue is given below.



Identify the option with correct labeling .

- A. P = Fibroblast , R = Collagen fibers
- B. R = Collagen fibers , S = Macrophages
- C. Q = Fibroblast , S = Mast cell
- D. P = Macrophage , S = Fibroblast .

Answer: C

 [Watch Video Solution](#)

7. The(i) ...is a spherical structure present in the nucleoplasm and it is site for(ii) synthesis .

- A. (i) Nucleus (ii) DNA
- B. (i) Ribosome (ii) Protein
- C. (i) Centromere (ii) Kinetochore
- D. (i) Nucleolus (ii) rRNA

Answer: D



Watch Video Solution

8. Air is breathed through

- A. Trachea - lungs - larynx - pharynx - alveoli

B. Nose - larynx - pharynx - bronchus - alveoli - bronchioles

C. Nostrils - pharynx - larynx - trachea - bronchi -
bronchioles - alveoli

D. Nose - mouth - lungs

Answer: C



Watch Video Solution

9. In some prokaryotes like..... There are other membranous extension in the cytoplasm called Which contain pigments .

A. Cyanobacteria and phycobilisomes

B. Cyanobacteria and chromatophores

C. Cyanobacteria and heterocysts

D. archaebacteria and heterocysts

Answer: B



Watch Video Solution

10. Lichens are ecologically important as they

A. Purify air

B. Are pioneers on barren rocks

C. Are symbionts of algae and fungi

D. Are associated with mycorrhizal roots

Answer: B



Watch Video Solution

11. Zygomorphic flower and diadelphous condition are found in the family

- A. Fabaceae
- B. Caesalpinaceae
- C. Mimosaceae
- D. Solanaaceae

Answer: A



[Watch Video Solution](#)

12. The sacculle and utricle contain a projecting ridge called

A. Macula

B. Ampulla

C. Cristae

D. Both B & C

Answer: A



Watch Video Solution

13. What is not correct about mitosis ?

A. Usually restricted to the diploid cells and haploid cells of some social insects

B. Furrow extends centripetally and microfilament ring brings about cleavage in plant cells .

C. Growth in multicellular organisms is a result of Mitosis

D. Meristematic tissues show mitosis

Answer: B



Watch Video Solution

14. Match the columns.

Column -I Column -I

- | | |
|---------------|--------------------------------------------|
| (a) Leptotene | (i) Chiasmata |
| (b) Zygotene | (ii) Chromosomes visible |
| (c) Pachytene | (iii) The pairing of homologous chromosome |
| (d) Diplotene | (iv) Clear appearance of tetrads |

A. (a) - (i),(b)-(ii),(c) -(iv),(d) -(iii)

B. (a) - (ii),(b)-(iii),(c) -(iv),(d) -(i)

C. (a) - (ii),(b)-(iii),(c) -(i),(d) -(iv)

D. (a) - (iv),(b)-(iii),(c) -(ii),(d) -(i)

Answer: B



Watch Video Solution

15. Which of the following statements is not true regarding ribs in humans ?

- A. Rib is a flat bone connected dorsally to vertebral column
- B. Ribs are ventrally connected to sternum through hyaline cartilage
- C. Vertebro - chondral ribs directly articulate with sternum with the help of hyaline cartilage
- D. In humans ribs are bicephalic

Answer: C



[Watch Video Solution](#)

16. Find out a set of common N_2 fixing fodder plants

- A. Trifolium , Atropa
- B. Withania , Abrus
- C. Sesbania , Trifolium
- D. Aloe , Gloriosa

Answer: C



[Watch Video Solution](#)

17. Polymerase chain reaction was developed by

- A. Kerry Muller

B. Kary B. Muller

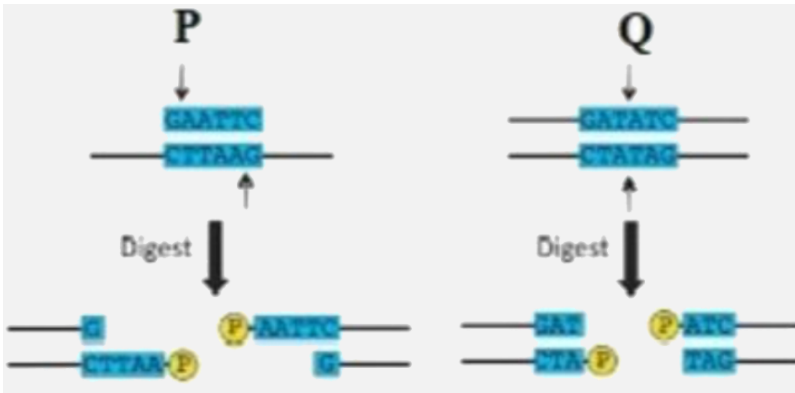
C. Kary B. Mullis

D. Kent Mullis

Answer: C

 [Watch Video Solution](#)

18. Analyze the action of restriction endonuclease in the given below diagram represented as P and Q .



- A. *P* *Q*
Sticky ends Blunt ends
- B. *P* *Q*
Blunt ends Sticky ends
- C. *P* *Q*
Blunt ends Staggered ends
- D. *P* *Q*
Sticky ends Cohesive ends

Answer: A



Watch Video Solution

19. Golden rice is a promising transgenic crop. When released for cultivation , it will help in:

- A. Correction of vitamin A deficiency
- B. Pest resistance
- C. Herbicide tolerance

D. Producing a petrol - like fuel

Answer: A



Watch Video Solution

20. Pericycle is present in

A. monocot stem , but absent in dicot stem.

B. dicot stem , but absent in monocot stem.

C. monocot root , dicot root and dicot stem, but absent in monocot stem.

D. monocot stem , but absent in monocot root, dicot root and dicot stem.

Answer: C



[Watch Video Solution](#)

21. Type of joint present between carpal and metacarpal of thumb is

- A. Saddle joint
- B. Gliding joint
- C. Hinge joint
- D. Pivot joint

Answer: A



[Watch Video Solution](#)

22. Epimysium perimysium and endomysium occur in

A. Nerve

B. Blood vessel

C. Striated muscle

D. Uterus

Answer: C



Watch Video Solution

23. Which of the following is correct about the natural of hormones ?

1. Hormones are non - nutrient chemicals.

Hormone act as intercellular messengers

3. Hormones are reusable

4. A hormone is produced by exocrine glands

A. I and II

B. III and IV

C. I and III

D. I and IV

Answer: A



Watch Video Solution

24. Oxygenic photosynthesis occurs in

A. Oscillatoria

B. Rhodospirillum

C. Chlorobium

D. Chromatium

Answer: A



Watch Video Solution

25. Which of the following structure receives and integrates with visual, tactile and auditory inputs ?

- A. Cerebellum
- B. Pons
- C. Mid brain
- D. Medulla

Answer: C



Watch Video Solution

26. what is antisense technology

- A. When a piece of RNA that is complementary in sequence is used to stop expression of a specific gene
- B. RNA polymerase producing DNA
- C. A cell displaying a foreign antigen used for synthesis of antigens
- D. Production of somaclonal variants in tissue culture.

Answer: A



Watch Video Solution

27. The polymerase chain reaction is a technique that

- A. Is used for in vivo replication of DNA

B. Is used for in vivo synthesis of mRNA

C. Is used for in vitro synthesis of mRNA

D. Is used for in vitro replication of specific DNA sequence
using thermostable DNA polymerase.

Answer: D



Watch Video Solution

28. Find out the incorrect match.

A. Biosphere reserves in India - 18

B. Hotspots in India - 35

C. National Parks in India - 104

D. wildlife sanctuaries in India - 551

Answer: B



Watch Video Solution

29. Which of the following statements is not correct regarding ACTH?

- A. It is secreted by the anterior lobe of pituitary .
- B. It regulates skin pigmentation in human beings
- C. It acts on the adrenal cortex and it mainly stimulates the secretion of mineralocorticoids .
- D. Its hypersecretion causes bronze - like pigmentation of skin.

Answer: C

30. Assertion: Pregnant women may show some presence of glucose in their postprandial urine although they have no diabetes.

Reason: In pregnant women the glomerular filtration rate is slightly increased. As a result the tubular load of glucose exceeds the tubular maximum for glucose reabsorption.

- A. Both the statement are true
- B. Both the statement are false
- C. Statement I is true and Statement II is false
- D. Statement I is true and Statement II is true

Answer: A

31. Among the following , the set of critical elements are :

A. Na , K and Ca

B. N , P and Mg

C. N, P and K

D. Mn , B and Mo

Answer: C

 Watch Video Solution

32. Which of the following described the nature of parathormone ?

A. Hypercalcemic

B. Hypocalcemic

C. Hyperkalemic

D. Hypokalemic

Answer: A



Watch Video Solution

33. Cell 'A' with O . P = 10 atm and T .P. = 5 atm is in contact with a cell ' B ' having O . P = 15 atm and T. P = 12 atm . The flow of water will be :

A. From A to B

B. Equal flow

C. From B to A

D. No flow

Answer: C



Watch Video Solution

34. The normal range of thrombocytes in the blood is :

A. 1,50,000 - 3,50,000/ mm^3

B. 1,00,000 - 150,000/ mm^3

C. 15,000 - 35,000 / mm^3

D. 3,50,000- 4,50,000 / mm^3

Answer: A



Watch Video Solution

35. Select the correct statement from the following .

- A. Valves guard the openings in the septum through which the atrium and ventricle are interconnected .
- B. Inter - atrial septum and inter - ventricular septum are thick partitions while atrio - ventricular partitions are thin.
- C. Mitral valve has two fibrous non - muscular cusps.
- D. All of the above .

Answer: A



[Watch Video Solution](#)

36. Subterranean cleistogamous flower is formed in :

- A. Viola
- B. Ficus
- C. Oxalis
- D. Commelina

Answer: D



[Watch Video Solution](#)

37. Formation of embryo directly from nucellus and integument is

- A. Apogamy
- B. Apospory

C. Adventive embryony

D. Diplospory

Answer: C



Watch Video Solution

38. In each microsporangium , pollen grains formed , are released with the_____ of anther. These pollen grains of some plants, like_____ cause allergies and bronchial afflictions.

Choose the option with the pair of words which correctly fills the above blanks.

A. dissociation , Hibiscus

B. dehydration , Viola

C. dehiscence, parthenium

D. dehiscence , Rose

Answer: C



Watch Video Solution

39. The sequence of development of embryo sac is :

A. Archesporium - Megaspore mother cell - Megaspore -
Embryo sac

B. Archesporium - Megaspore -Megaspore mother cell -
Embryo sac

C. Archesporium - Megaspore -Megasporophyte - Embryo
sac

D. None of the above

Answer: A



Watch Video Solution

40. Commonly in a mature fertilised ovule n , $2n$ and 3 condition is respectively found in :

- A. Antipodals , synergids and integuments
- B. Antipodals , zygote and PEN
- C. Egg , nucellus and endosperm
- D. Endosperm , nucellus and egg

Answer: B



Watch Video Solution

41. 0.1% of the composition of wastewater is contributed by three different types of materials. Choose the set of substances from the following which depicts all the three types of impurities found in wastewater.

- A. Clay , faecal matter and glass
- B. Cement , cloth fibers and calcium
- C. Clay , paper fibers and ammonia
- D. Silt , sand and faecal matter

Answer: C



Watch Video Solution

42. Which of the following hormones is responsible for the excretion of sodium in urine ?

A. Angiotensin II

B. ADH

C. Aldosterone

D. ANF

Answer: D



Watch Video Solution

43. Which of the following enzymes is found in pancreatic juice

?

A. Nuclease

B. Enterokinase

C. Aminopeptidase

D. Dipeptidase

Answer: A

 [Watch Video Solution](#)

44. The thickness of ozone in the atmospheric layer is measured in :

A. dB

B. atm

C. DU

D. ppm

Answer: C

 [Watch Video Solution](#)

45. The total lung capacity including which of the following volumes ?

A. IRV + ERV +RV+TV

B. ERV+TV+IRV

C. IRV+TV+FRC

D. IC+EC+FRC

Answer: A



[Watch Video Solution](#)

46. Which of the following is/are considered as limitations of the ecological pyramids ?

- A. It does not take into account the same species belonging to two or more trophic levels
- B. It assumes a simple food chain.
- C. Saprophytes are not given any place in ecological pyramids despite playing an important role in the ecosystem.
- D. All of the above .

Answer: D

 [Watch Video Solution](#)

47. The disorder in which walls of the alveoli gets damaged , resulting in a decrease in the surface area, is called :

A. Asthma

B. Allergy

C. Emphysema

D. Pneumonia

Answer: C



Watch Video Solution

48. In an aquatic ecosystem , is the major conduit for energy flow.

A. Detritus food chain

B. Plankton food chain

C. Grazing food chain

D. Food web

Answer: C



Watch Video Solution

49. Select the incorrect statement .

- A. Animal species are more than plant species on earth.
- B. Prokaryotic species are more in number in comparison to animal species.
- C. More than 90,000 species of animals are found in India.
- D. India is one of the 12 megadiversity countries in the world.

Answer: B



[Watch Video Solution](#)

50. Which of the following factors has not aided in the high species diversity of tropics

- A. Less seasonal variation promoting niche specialisation
- B. Availability of more solar energy
- C. More pest pressure
- D. Less migration

Answer: D



[Watch Video Solution](#)

51. Which of the following organisms is associated with the production of blood - cholesterol lowering agents ?

A. Trichoderma

B. Lactobacillus

C. Monascus

D. Clostridium

Answer: C



[Watch Video Solution](#)

52. Citric acid is industrially best produced by :

A. Streptococcus lactis

B. *Aspergillus niger*

C. *Penicillium purpogenum*

D. *Lactobacillus*

Answer: B



Watch Video Solution

53. Pyramid of number in a pond ecosystem is

A. inverted

B. upright

C. spindle - shaped

D. irregular

Answer: B



[Watch Video Solution](#)

54. Which one of the following mRNA sequences can be translated completely ?

A. AUG UUC UCC UGG UAA UAU

B. AUG UUC UCC UGA UGG UAU

C. AUG ACG UAU UUC UGA CUC

D. AUG UAU UUC UGC CUC UAG

Answer: D



[Watch Video Solution](#)

55. In which type of natural selection does the peak get higher and narrower ?

- A. Balancing selection
- B. Directional selection
- C. Stabilizing selection
- D. Both A & C

Answer: C



Watch Video Solution

56. Which of the following sequences is correct in a hydrarch succession ?

- A. Zooplankton , free - floating plants , reed swamp , scrub , forest
- B. Phytoplankton , rooted submerged plants , free - floating plants , marsh meadow, scrub, forest
- C. Phytoplankton , free - floating plants , marsh meadow , reed swamp , scrub, forest
- D. Phytoplankton , free - floating plants , rooted submerged plants, reed swamp , scrub, forest .

Answer: B



Watch Video Solution

57. Which of the following reptiles is the most current ancestor of modern mammals ?

A. Therapsid

B. Plecosaurus

C. Sauropsids

D. Synapsid

Answer: A



[Watch Video Solution](#)

58. Compare the statements A and B .

Statement A : RNA produced during transcription in eukaryotic cells cannot be straight away used in

photosynthesis. Statement B : RAN splicing phenomena help in the removal of exons .

Choose the correct description.

- A. Both the statement A and B are wrong
- B. Both the statement A and B are correct
- C. Statement A is correct and B is wrong
- D. Statement A is correct and B is correct

Answer: A



Watch Video Solution

59. t - RNA is also known as

- A. Adapter molecule

B. Messenger RNA

C. Soluble RNA

D. Both (A) and (C)

Answer: D



Watch Video Solution

60. In eukaryotic rRNA and tRNA synthesis is catalysed by :

A. RNA polymerase I and DNA polymerase I

B. RNA polymerase II and DNA polymerase II

C. DNA polymerase I and II

D. RNA polymerase I and II

Answer: D



[Watch Video Solution](#)

61. If the majority of offsprings exhibit a dominant character, then the parents must be:

- A. Both hybrids
- B. One dominant and one recessive
- C. Both recessive
- D. Both dominant

Answer: A



[Watch Video Solution](#)

62. Which of the following disease is characterized by constipation, abdominal pain, cramps ,stool with excess mucus and blood clots ?

- A. Amoebiasis
- B. Kala azar
- C. Filariasis
- D. Ringworm

Answer: A



Watch Video Solution

63. How many phenotype and genotypes are possible for ABO blood groups ?

- | | | |
|----|-----------------|----------------|
| A. | Phenotypes
4 | Genotypes
4 |
| B. | Phenotypes
6 | Genotypes
4 |
| C. | Phenotypes
4 | Genotypes
7 |
| D. | Phenotypes
4 | Genotypes
6 |

Answer: D



Watch Video Solution

64. Proportion of reproductive age group is higher than pre-reproductive groups in

- A. triangular age pyramid
- B. urn- shaped pyramid
- C. bell - shaped age pyramid

D. More than one option is correct

Answer: B

 [Watch Video Solution](#)

65. Development of the human brain and language over the course of human evolution represent

- A. Divergent evolution
- B. Convergent evolution
- C. Parallel evolution
- D. Mutation

Answer: C

 [Watch Video Solution](#)

66. The term phyllotaxy is used to describe

- A. type of ovary in a plant
- B. mode of arrangement of leaves on the axis or stem
- C. the type of roots
- D. arrangement of sepals and petals in a flower.

Answer: B



[Watch Video Solution](#)

67. Which of the following flowers are pollinated by honey bees ?

A. Mulberry

B. Fig

C. Pear

D. More than one option is correct

Answer: C



Watch Video Solution

68. Which of the following is characteristic of phylum Ctenophora ?

A. Diploblastic with tissue grade body organization

B. Only sexual method of reproduction but organisms are hermaphrodites

C. The body bears eight external rows of ciliated comb plates and shows bioluminescence

D. All of these

Answer: D



Watch Video Solution

69. Sickle - cell anemia trait is adaptation against malaria. It is due to substitution (point mutation) in which

A. instead of an acidic amino acid valine , a neutral amino acid valine comes at the number 6th position in one of the β - chain of Hb

- B. instead of neutral amino acid valine, acidic amino acid glutamic acid is inserted at the number 6th position of β chain Hb
- C. instead of neutral amino acid glutamic acid , an acidic amino acid valine comes at 6th position in one of the β - chain of Hb
- D. instead of an acidic amino acid glutamic acid , a neutral amino acid valine comes at 6th position in one of the β - chain of Hb

Answer: D



Watch Video Solution

70. Oxidation of one molecule of glucose yields 38 mols of ATP in the proportion of

A. All 36 ATP in mitochondria

B. 6 ATP outside the mitochondria and 30 inside mitochondria.

C. 2 ATP in glycolysis and 34 ATP in Kreb's cycle

D. 2 ATP outside the mitochondria and 34 inside mitochondria.

Answer: D



Watch Video Solution

71. Ovary is half-inferior in the flowers of

A. Guava

B. Plum

C. Brinjal

D. Cucumber

Answer: B



Watch Video Solution

72. Which of the following contraceptive devices makes the uterus unsuitable for implantation and the cervix hostile to the sperms ?

A. Lippe's loop

B. Copper releasing IUDs

C. Hormone releasing IUDs

D. Multiload 375 IUDs

Answer: C



Watch Video Solution

73. Which of the following can lead to infertility in males

A. Any kind of reproductive tract infection like filariasis

B. Undersecretion of hormones like FSH and adrenaline

C. Improper structure of sperm produced in Leydig cells

D. Damaged to accessory duct

Answer: D



Watch Video Solution

74. In which of the following photolysis of water takes place ?

A. PS I

B. PS II

C. Both PS I and PS II

D. Occurs in stroma of chloroplast

Answer: B



Watch Video Solution

75. Hisardale a new breed of sheep is developed in Punjab which is the result of

- A. Outbreeding
- B. Outcrossing
- C. Cross breeding
- D. Interspecific hybridization

Answer: C



Watch Video Solution

76. Rhodophyta are red in colour due to

- A. Carotenes
- B. Xanthophylls
- C. Phycoerythrin
- D. Phycocyanin

Answer: C



Watch Video Solution

77. Which of the following set is a biopolymer of glucose ?

- A. Glycogen , sucrose , maltose
- B. Glycogen , cellulose , starch
- C. Sucrose, inulin , pectin
- D. Glycogen, sucrose , lactose

Answer: B



Watch Video Solution

78. The modified stem of opuntia is

- A. Phyllode
- B. Phylloclade
- C. Cladode
- D. Staminode

Answer: B



Watch Video Solution

79. Which is the following statements is not correct about spermatogenesis ?

- A. Spermatogonia multiply by mitotic division and increase in number
- B. Each spermatogonium is diploid and contains 46 chromosomes
- C. Some spermatogonia periodically undergo mitosis
- D. A primary spermatocyte completes first meiotic division leading to formation of two equal haploid cells called secondary spermatocyte

Answer: C



Watch Video Solution

80. Which of the following characteristics are found in a healthy cell ?

- A. Metastasis
- B. Presence of contact inhibition
- C. Presence of proto - oncogenes
- D. Uncontrolled cell division

A. D+C

B. A+C

C. B+C

D. B+D

Answer: C



Watch Video Solution

81. Which of the following plant's productivity of photosynthesis decreases due to photorespiration ?

A. C_3 plants

B. C_4 plants

C. CAM plants

D. Both (A) and (B)

Answer: A



[Watch Video Solution](#)

82. An individual heterozygous for two alleles ($AaBb$) produces two million sperms. How many of the sperms will have both recessive alleles

A. 0.5 million

B. 1 million

C. 2 million

D. 0.25 million

Answer: A



Watch Video Solution

83. Chemically , auxin is

A. Indole acetic acid

B. Kinetin

C. Diterpenes

D. Amino purine

Answer: A



Watch Video Solution

84. Which of the following antibody can be characterized by the following features ?

1. It is the heaviest antibody.
2. The first antibody which come into action after entry of the pathogen.
3. It is a pentamer.

A. IgA

B. IgC

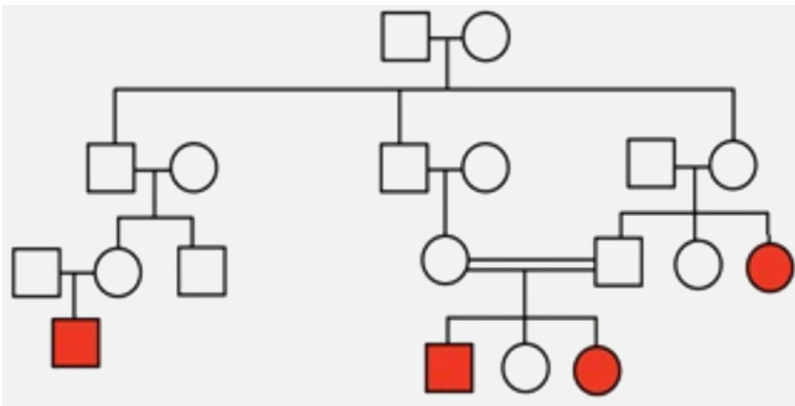
C. IgM

D. IgE

Answer: C

 Watch Video Solution

85. Analyze the pedigree chart given below and draw the conclusion for the genotype of parents undergoing consanguineous marriage.



A. Both of them are homozygous recessive

B. The female is homozygous recessive while the male is heterozygous dominant

C. The female is heterozygous carrier while the male is homozygous recessive

D. Both of them are heterozygous

Answer: D



Watch Video Solution

86. Which step is important for continuity of glycolysis in anaerobic respiration ?

A. Oxidation of PGAL

B. Substrate level phosphorylation

C. Oxidation of NADN

D. Formation pyruvic acid.

Answer: C



Watch Video Solution

87. Foetal ejection reflex is produced by

- A. Well developed foetus
- B. Placenta
- C. Undeveloped foetus
- D. Both (A) & (B)

Answer: D



Watch Video Solution

88. The foetal ejection reflex is induced by

- A. Gymnosperms are both homosporous and heterosporous .
- B. Marsilea , Ginkgo , and Pinus all are gymnosperms
- C. The leaves of gymnosperms are not well adapted to extremes of climate
- D. Sequoia is the tallest gymnosperm and is known as the father of the forest.

Answer: D



Watch Video Solution

89. Which of the following male accessory gland is not found in pairs ?

- A. Prostate Gland
- B. Seminal Vesicle
- C. Bulbourethral Gland
- D. Both (B) & (C)

Answer: A



Watch Video Solution

90. Which of the following is not the task under the Reproductive and child health care (RCH) program ?

- A. Providing facilities to build up a reproductively health society.
- B. Creating awareness regarding reproduction - related aspects.
- C. Awareness regarding water borne disease
- D. Awareness regarding contraceptive measures.

Answer: C



Watch Video Solution