



## BIOLOGY

### BOOKS - NTA MOCK TESTS

#### NTA NEET SET 46

#### Biology

1. Fill in the blanks for the statement given below.

i. Collection of actual specimens of plant / animal species is essential and the prime source of.....a.....

ii. presence of notochord and dorsal hollow neural system are features of .....b.....

iii. Stuffed and preserved terms are associated with .....c.....

iv. ....d..... represents the choice made between two opposite options.

v. The number and type of organism present on earth known as .....e.....

A.

a	b	c	d	e
Museum	Chordata	Couplet	Biodiversity	Taxonomy
			study	

B.

a	b	c	d	e
Couplet	Museum	Chordata	Taxonomy	Biodiversity
			study	

C.

a	b	c	d	e
Taxonomy	Chordata	Museum	Couplet	Biodiversity
study				

D.

a	b	c	d	e
Biodiversity	Taxonomy	Museum	Couplet	Chordata
	study			

**Answer: C**

 [Watch Video Solution](#)

2. Nervous system of ctenophores is similar to

A. Cnidaria

B. Platyhelminthes

C. Nemathelminthes

D. Annelida

**Answer: A**

 [Watch Video Solution](#)

3. Who for the first time explained that the new cells are derived /formed from pre - existing cells and in which year ?

A. Matthias Scheiden (1838)

B. T.Schwann (1939)

C. C. Nageli (1938)

D. Rudolph Virchow (1855)

**Answer: D**



[Watch Video Solution](#)

4. (a.) Small , circular non - history DNA also present in mitochondria and chloroplast.

(b.) The extension of plasma membranes mesosomes into, the cell can be present in the form of tubules , lamellae and vesicles.

(c.) The quasi fluid nature of lipid enables flip flop movement of proteins

at a specific place.

(d.) Components of the endomembrane system associated with secretion , packaging of material and capable of digestion of several macro organic compounds.

(e.) Palade particles forming a peptide bond between amino acids is a membrane - bounded organelle.

A. a and c

B. b and d

C. b,c , d and e

D. c and e

**Answer: D**



**Watch Video Solution**

**5. The larva of Sycon is**

A. Parenchymula

B. redia

C. Planula

D. amphiblastula

**Answer: D**



**Watch Video Solution**

6. a. The passage through which movement of RAN and protein molecules takes place in both directions in a nuclear pore.

b. A disc-shaped structure is kinetochore is present as a lateral side of centromere

c. DNA moves easily in both directions through the nuclear pore

Read the following and select the correct option

A. a and b are true .

B. b and c are true.

C. c and a are true .

D. a , b and c are true.

**Answer: A**



**Watch Video Solution**

7. Pinctada is commonly called as

A. Pearl oyster

B. Sea hare

C. Chiton

D. Salpa

**Answer: A**



**Watch Video Solution**

8. In sunflower stem, the pericycle is present in the form of patches and they are formed by

- A. Parenchymatous cell
- B. Sclerenchymatous cells
- C. Collenchymatous cells
- D. Both (a) and (b)

**Answer: B**



[Watch Video Solution](#)

9. (a.) In the young dicot stem, cambium present in patches as a single layer between xylem and y.

(b.) Vascular and cork cambium both are form the lateral meristem.

(C.) The medullary cells are derived from the interfascicular cambium.

In given statements, which of the following are correct ?

A. a and c

B. a and b

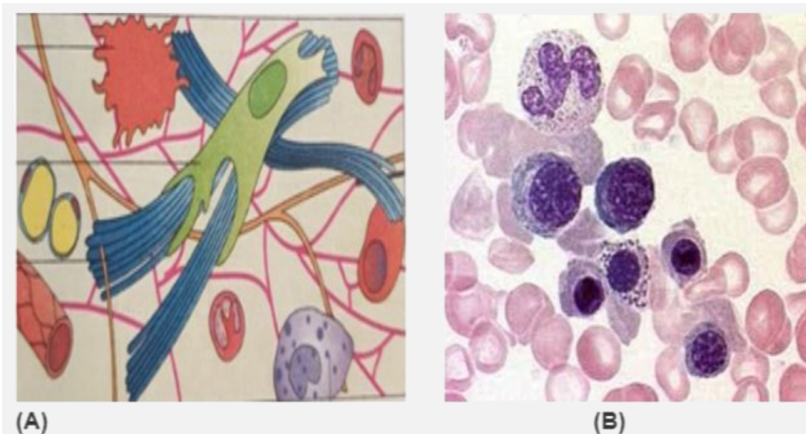
C. b and c

D. a, b and c

**Answer: D**

 [Watch Video Solution](#)

**10.** Identify these connective tissue (A) and (B) and their location in the body.





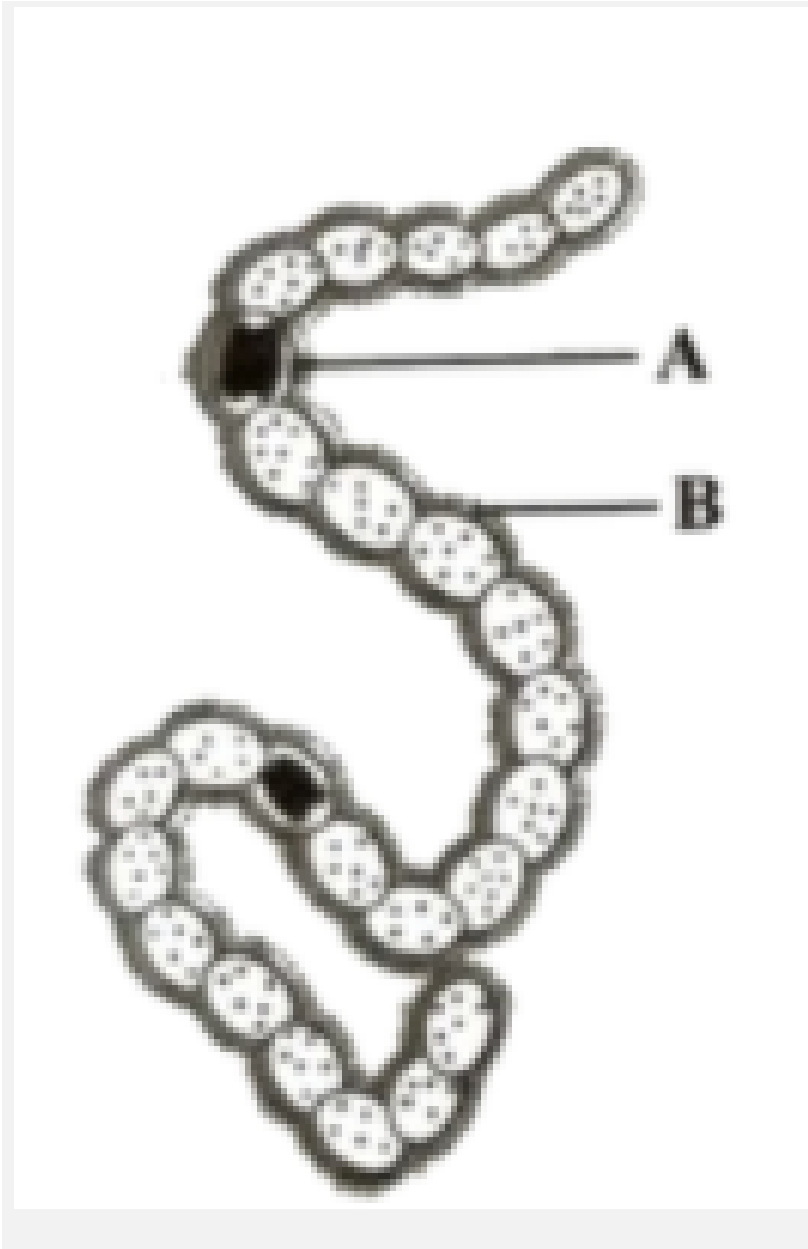
- A. (A) - Areolar connective tissue , beneath the skin
- (B) - Adipose tissue , beneath skin
- B. (A) - Areolar connective tissue, beneath the skin.
- (B) - Fluid connective tissue, blood vessels
- C. (A) - Fluid connective tissue , blood vessels
- (B) - Dense connective tissue , tendons
- D. (A) - Dense connective tissue , blood vessels
- (B) - Specialized connective tissue, blood

**Answer: B**



**Watch Video Solution**

11. observed given figure and identify with name and labelled A and B .



A. Anabaena , A - Akinete , B - Heterocyst

B. Nostoc , A - Heterocyst, B - Mucilaginous sheath

C. Nostoc , A - Akinete , B - Vegetative cells

D. Anabaena , A - Heterocyst , B - Mucilaginous sheath .

**Answer: B**



[Watch Video Solution](#)

**12. Liver stores**

A. Vitamin A

B. Vitamin D

C. Vitamin E

D. All of the above

**Answer: D**



[Watch Video Solution](#)

13. (i) Aristotle classified plants into herbs , shrubs and trees on the basis of morphology.

(ii) Linnaeus two Kingdom classification was based on presence or absence of cell wall.

(iii) R.H. Whittaker include heterotrophic and chitinous cell wall organisms in animals.

Select the correct options.

A. a and c are correct .

B. b and c are correct .

C. b is incorrect .

D. c is incorrect

**Answer: D**



**Watch Video Solution**

14. The cartilaginous structure/s ,lined with mucous membrane is/ are

- A. Larynx
- B. Pharynx
- C. Trachea
- D. Both (a) and (c)

**Answer: D**

 [Watch Video Solution](#)

**15.** Which of the following statement/s is/are not the characteristic feature of kingdom Protista?

- (a) They include chrysophytes, dinoflagellates, euglenoids, slime molds, and protozoans
- (b) Chief producers in the ocean are diatoms.
- (c) Toxins are released by some of the members of this kingdom.
- (d) They are either unicellular or multicellular.

A. a and c

B. b and d

C. b and c

D. Only d

**Answer: D**



**Watch Video Solution**

**16. Which of the following is not the correct match with respect to fungi ?**

A.

Class	Common name	Mycelium	Member
Phycomycetes	Aquatic fungi	Aseptate	<i>Mucor/Albugo</i>

B.

Class	Common name	Mycelium	Member
Ascomycetes	Sac fungi	Aseptate	Morels, truffles, <i>Aspergillus</i> , <i>Neurospora</i>

C.

Class	Common name	Mycelium	Member
Basidiomycetes	Club fungi	Septate	Rust fungi, smut fungi, <i>Agaricus</i>

D.

Class	Common name	Mycelium	Member
Deuteromycetes	Imperfect fungi	Septate	<i>Trichoderma</i> red rot, early blight

**Answer: B**



[Watch Video Solution](#)

17. Which of the following mechanism /s help to increase the volume of the thoracic chamber ?

- A. The contraction of diaphragm
- B. Contraction of external intercostal muscle
- C. The uplifting of sternum
- D. All of the above

**Answer: D**



[Watch Video Solution](#)

18. Analyze the statements and select the correct option.

- a) The cell cycle gets completed in G1-S-G2-M phase.
- b) G1 phase corresponds to the interval between mitosis and initiation of

DNA replication.

c) In the G1 phase, the cell is metabolically active and DNA replicates.

A. a and b are correct .

B. only c is incorrect

C. only b is correct

D. a and c are incorrect

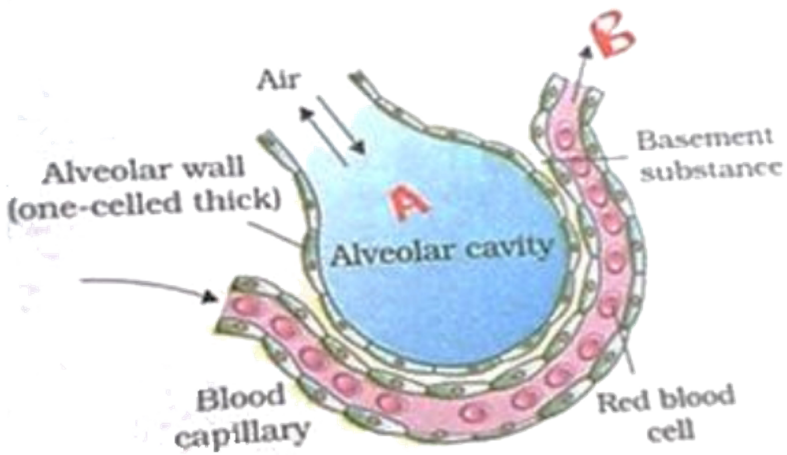
**Answer: B**



**Watch Video Solution**

**19.** The partial pressure of oxygen at the site A and B in the following figure is





A. A : 104 mm Hg B : 95 mm Hg

B. A : 159 mm Hg B : 95 mm Hg

C. A : 104 mm Hg B : 40 mm Hg

D. A : 159 mm Hg B : 95 mm Hg

**Answer: A**

[Watch Video Solution](#)

20. In meiosis the actual haploid in terms of DNA come in

A. Metaphase - I

B. Anaphase - II

C. Metaphase - II

D. Telophase - I

**Answer: B**



[Watch Video Solution](#)

**21.** The matrix of blood is known as

A. Plasma

B. Serum

C. RBC and WBC

D. WBC and platelets

**Answer: A**



[Watch Video Solution](#)

22. Alexander von Humboldt is associated with

(a.) species - area relationship

(b.)  $\log S = \log C + z \log A$

(c.) Within a region , species richness increases with the increasing limited explored area.

(d.) Increased diversity contributes to higher productivity.

(e.) Species diversity increases with the loss of keystone species.

A. a and e

B. a , b and d

C. a,b,c

D. b,c and d

**Answer: C**



**Watch Video Solution**

23. The ventricular muscles relax and the ventricular pressure falls causing the closure of semilunar valves. These events are related to

- A. atrial depolarization
- B. ventricular systole
- C. ventricular diastole
- D. joint diastole

**Answer: C**



[Watch Video Solution](#)

24. Due to over exploitation one of the endangered species of Indian medicinal plants is that of

- A. Garlic
- B. Nepenthes
- C. Podophyllum

D. Ocimum

**Answer: C**



**Watch Video Solution**

**25.** The selective secretion of hydrogen ion, ammonia and potassium into the filtrate takes place mainly in

- A. Proximal convoluted tubule
- B. Henle's loop
- C. Distal convoluted tubules
- D. Collecting duct

**Answer: A**



**Watch Video Solution**

26. Which of the following is not correct with respect to sacred grooves in India?

- A. Sarguja , Chanda and Bastar - Madhya Pradesh
- B. Aravelli hills - Uttar Pradesh
- C. Khasi and Jaintia hills - Meghalaya
- D. Western Ghats - Karnataka

**Answer: B**



[Watch Video Solution](#)

27. Which of the following is an example of movement?

- A. Streaming of Protoplasm
- B. Winking of eyelids
- C. Flexing of arms
- D. All of the above

**Answer: D**



**Watch Video Solution**

**28.** Fill in the blanks.

I. The western Ghats have a greater amphibian diversity than the Eastern Ghats .

The is an example of .....a.....

II. India had more than 50 thousand strains of rice. This is an example of .....b .....

III. Coral reef , mangroves and rain forest have greater diversity. This is the example of .....c.....

A. a - ecological diversity , b - species diversity , c - genetic diversity

B. a - species diversity , b - genetic diversity , c - ecological diversity

C. a - genetic diversity , b - ecological diversity , c - species diversity

D. a - species diversity , b - ecological diversity , c - genetic diversity

**Answer: B**

 [Watch Video Solution](#)

**29.** Heavy and light meromyosin are components of

- A. Actin filament
- B. Myosin filament
- C. Troponin protein
- D. Tropomyosin protein

**Answer: B**

 [Watch Video Solution](#)

**30.** (I) The formation of microspore from microspore mother cells by meiosis is called .....a .....

(II) Formation of megaspore from megaspore mother cell by meiosis is



called .....b.....

(III ) The formation of male gamete from generative cell by mitosis is called .....C.....

(IV ) The formation of a zygote by the fusion of male and female gametes is called ..... d.....

Write correct terms for a, b, c and d.

A.

<i>A</i>	<i>B</i>	<i>C</i>	<i>D</i>
Megasporogenesis	Microsporogenesis	Fertilization	Gametogenesis

B.

<i>A</i>	<i>B</i>	<i>C</i>	<i>D</i>
Microsporogenesis	Megasporogenesis	Microgametogenesis	Fertilization

C.

<i>A</i>	<i>B</i>	<i>C</i>	<i>D</i>
Microgametogenesis	Megasporogenesis	Microsporogenesis	Syngamy

D.

<i>A</i>	<i>B</i>	<i>C</i>	<i>D</i>
Syngamy	Microgametogenesis	Microsporogenesis	Microgametogenesis

**Answer: B**



**Watch Video Solution**

31. In flowering plants , arrange the following steps in their correct sequence .

- (a) Formation of the embryo sac
- (b) Megasporogenesis
- (c) Formation of endosperm
- (d) Fertilization
- (e) Development of embryo

A.  $a \rightarrow b \rightarrow c \rightarrow d \rightarrow e$

B.  $b \rightarrow a \rightarrow d \rightarrow c \rightarrow e$

C.  $b \rightarrow a \rightarrow e \rightarrow c \rightarrow d$

D.  $b \rightarrow a \rightarrow c \rightarrow d \rightarrow e$

**Answer: B**



**Watch Video Solution**

32. The point where the optic nerve leaves the eye and the retinal blood vessels enter is referred to as

- A. Blind spot
- B. Fovea
- C. Aqueous chamber
- D. Vitreous chamber

**Answer: A**



[Watch Video Solution](#)

33. From the following, select the process which take place during the development of embryo sac.

- (a.) Functional megaspore divides by three mitotic divisions.
- (b.) Type of nuclear division is free , where no cell wall formation takes place.

(c.) Among eight nuclei. Six are surrounded by a cell wall.

(d.) Central cell is situated below the egg apparatus .

A. a and b

B. b and d

C. c and d

D. All are correct

**Answer: D**



**Watch Video Solution**

**34.** Select the incorrect statement in the following.

A. Multipolar neurons are found in the cerebral cortex.

B. Unipolar neurons have cell body with one axon only .

C. The myelinated nerve fibres are enveloped with Schwann cells .

D. The postsynaptic neurons are filled throughout with neurotransmitters- containing vesicles .

**Answer: D**



**Watch Video Solution**

35. Transfer of pollen grains to the stigma of the pistil is termed as .....a..... .

II. Transfer of pollen grains from the anther to the stigma of the same flower is termed as .....b.....

III . Transfer of pollen grains from the anther to the stigma of another flower of the same plant is termed as .....c.....

Transfer of pollen grains from the anther to the stigma of a different plant is termed as .....d.....

Fill in the blanks a, b, ,c and d with given terms .

A.	<i>A</i>	<i>B</i>	<i>C</i>	<i>D</i>
	Autpgamy	Geitonogamy	Pollination	Xenogamy

B.	<i>A</i>	<i>B</i>	<i>C</i>	<i>D</i>
	Geitonogamy	Pollination	Autpgamy	Xenogamy

- |    |             |          |             |             |
|----|-------------|----------|-------------|-------------|
|    | <i>A</i>    | <i>B</i> | <i>C</i>    | <i>D</i>    |
| C. | Pollination | Autpgamy | Xenogamy    | Geitonogamy |
|    | <i>A</i>    | <i>B</i> | <i>C</i>    | <i>D</i>    |
| D. | Pollination | Autpgamy | Geitonogamy | Xenogamy    |

**Answer: D**



[Watch Video Solution](#)

**36.** The gonadotropin - releasing hormones stimulates the release of

- A. LH and FSH from pituitary gland
- B. Testosterone from testis
- C. Melatonin from pineal gland
- D. Thyroxine from thyroid gland

**Answer: A**



[Watch Video Solution](#)

37. Which of the following flowers produce assured seed set even in the absence of pollinators ?

- A. Viola , Commelina - Xenogamous flowers
- B. Viola , Oxalis - Cleistogamous flowers
- C. Tomato , chilli - Cleistogamous flowers
- D. Capsella , Brassica - Cleistogamous flowers

**Answer: B**



[Watch Video Solution](#)

38. Which of the following statements are correct ?

- a. The gamete transfer is a crucial step of sexual reproductive .
- b. In algae and fungi , both gametes are mostly non - motile
- c. In most of higher organisms, the female gamete is stationary
- d . In most of the organisms, fertilization is internal.

A. a and c are correct .

B. b and d are correct

C. a , c and d are correct

D. a, c and d are correct

**Answer: C**



**Watch Video Solution**

**39.** How many of the following hormones were synthesised and secreted by pituitary gland ?

\* growth hormone

\* prolactin

\* thyroxine

\* aldosterone

\* luteinizing hormone

\* follicle - stimulating hormone

**A. Two**



B. Four

C. Six

D. One

**Answer: B**



**Watch Video Solution**

**40.** Which of the following is not related to the chromosomes theory of inheritance ?

A. Chromosomes as well as genes occur in pairs .

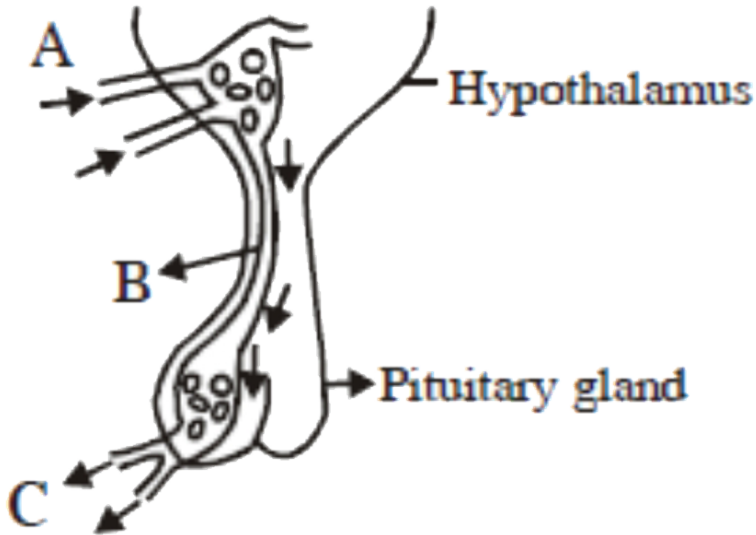
B. Behaviour of chromosomes is parallel to the behaviour of genes.

C. The two alleles of genes pair are located on homologous sites on homologous chromosomes .

D. Pairing and separation of a pair of chromosomes would lead to the segregation of a factor they carried.

Answer: D

 Watch Video Solution



41.

In a given above representation, the point A ,B and C respectively , are

- A. Hypophyseal artery , hypophyseal portal vein , Hypophyseal vein.
- B. Hypophyseal vein, Hypophyseal portal vein , Hypophyseal artery.
- C. Hepatic artery , Hypophyseal vein, Hepatic vein
- D. Hypophyseal portal vein, Hypophyseal artery, Hypophyseal vein

**Answer: A**



**Watch Video Solution**

**42.** Which one of the following statements about morula in humans is correct ?

- A. It has almost equal quantity of cytoplasm as an uncleaved zygote but much more DNA.
- B. It has far less cytoplasm as well as less DNA than in an uncleaved zygote.
- C. It has more or less equal quantity of cytoplasm and DNA as in uncleaved zygote.
- D. It has more cytoplasm and more DNA than an uncleaved zygote .

**Answer: A**



**Watch Video Solution**

**43.** A test cross is carried out to

- A. find the number of alleles of a gene
- B. determine two species will breed successfully
- C. Predict whether two traits are linked
- D. determine the genotype of a plant in F<sub>2</sub> generation.

**Answer: D**



**Watch Video Solution**

**44.** Each of the following statements concerning testosterone is true, except

- A. It is synthesized by Leydig cells.
- B. It is required for spermatogenesis .
- C. It is required for secondary development in males.

D. It is excluded from the adluminal compartment of the seminiferous epithelium.

**Answer: D**

 [Watch Video Solution](#)

**45.** Alfred Sturtevant is associated with

- A. Cytoplasmic inheritance
- B. Linkage theory
- C. Chromosomal Theory of Inheritance
- D. Genetic map

**Answer: D**

 [Watch Video Solution](#)

46. Inheritance in which female and male parents transfer an X - linked character to granddaughter or grandson through the offspring of the opposite sex is defined as

- A. Criss - cross inheritance
- B. Non Criss - cross inheritance
- C. Sex influenced inheritance
- D. Sex limited inheritance

**Answer: A**



[Watch Video Solution](#)

47. Which of the following hormones is produced only during pregnancy ?

- A. Prolactin
- B. FSH
- C. hPL

D. Cortisol

**Answer: C**



**Watch Video Solution**

**48.** In Punjab, the famous sahiwal cows were developed through

- A. Artificial selection and domestication of wild cows.
- B. Artificial selection and European wild cows.
- C. Artificial selection and domestication from ancestral wild cows.
- D. Artificial selection and domestication from American cows.

**Answer: C**



**Watch Video Solution**

**49.** Vernalization is defined as

- A. all changes that an organism goes through during its life cycle.
- B. flowering that is either quantitatively or qualitatively dependent on the exposure to low temperature.
- C. flowering induced only when a plant is exposed to certain duration of photoperiod .
- D. presence of different kinds of structure in response to environment or phases of life .

**Answer: B**



[Watch Video Solution](#)

**50.** Which of the following contraceptive protect the user from contracting STDs and AIDS ?

- A. Condoms
- B. Copper T



C. Saheli

D. Norplant

**Answer: A**



[Watch Video Solution](#)

51. The absolute growth rate is

A. measurement and the comparison of total growth rate per unit time.

B. growth rate in whole life .

C. growth from birth to death

D. per unit initial parameters

**Answer: A**



[Watch Video Solution](#)

52. A procedure in which sperm is directly injected into the ovum is

A. ICSI

B. Artificial insemination

C. GIFT

D. ZIFT

**Answer: A**



**Watch Video Solution**

53. The sequence of reactions involved in the production of biogas is

A. Hydrolysis - Methanogenesis - Hydrolysis

B. Acetogenesis - Methanogenesis - Hydrolysis

C. Hydrolysis - Hydrolysis - Acetogenesis

D. Hydrolysis - Acetogenesis - Methanogenesis

**Answer: D**



**Watch Video Solution**

**54.** Select the incorrect match from the following.

- A. Lipase - removes oily stains
- B. Streptokinase - bottled juice clarification
- C. Proteases - used in detergents
- D. Statins - blood cholesterol- lowering agents

**Answer: B**



**Watch Video Solution**

**55.** In case of evolution, which of the following statements is not correct ?

A. Fossilized animals provide important information to trace evolution

.

B. Wing of birds and forelimbs of cows are homologous.

C. In higher animals , early development stages are similar.

D. Variation among individuals are not important in natural selection .

**Answer: D**



**Watch Video Solution**

**56.** Which of the following pairs of countries have taken up the initiative to introduce ecological sanitation in several areas ?

A. USA and Canada

B. India and Sri Lanka

C. Spain and Germany

D. Sri Lanka and Myanmar

**Answer: B**



[Watch Video Solution](#)

57. When the same structure evolves in a different direction due to adaptation to a different need , it is referred to as

- A. Adaptive convergence
- B. Divergent evolution
- C. Convergent evolution
- D. Analogy

**Answer: B**



[Watch Video Solution](#)

58. According to the roadmap , the goal of the Euro III norms is to reduce. ....(a) ....to .....(b) ..... ppm in petrol and diesel .

A. a - carbon monoxide , b - 60

B. a - sulphur , b - 50

C. a - lead , b - 60

D. a - carbon monoxide , b - 50

**Answer: B**

 [Watch Video Solution](#)

**59.** Which of the following is a feature of genetic equilibrium ?

A. The gene pool remains constant

B. Alleles frequency of a population is stable

C. The total sum of all the allele frequency is 1.

D. All of the above

**Answer: D**

 [Watch Video Solution](#)

60. Match the following columns.

Column -I

(A) Underground stem

(B) Stem tendril

(C) Stem thorns

(D) Flattened stem

(E) Fleshy cylindrical stem

Column-II

(1) Euphorbia

(2) Opuntia

(3) Potato

(4) Citrus

(5) Cucumber

A. 

<i>A</i>	<i>B</i>	<i>C</i>	<i>D</i>	<i>E</i>
1	2	3	5	4

B. 

<i>A</i>	<i>B</i>	<i>C</i>	<i>D</i>	<i>E</i>
2	3	4	5	1

C. 

<i>A</i>	<i>B</i>	<i>C</i>	<i>D</i>	<i>E</i>
3	4	5	1	2

D. 

<i>A</i>	<i>B</i>	<i>C</i>	<i>D</i>	<i>E</i>
3	5	4	2	1

Answer: D



Watch Video Solution

61. Which of the following group of viruses infect the respiratory passage but not the lungs ?

A. Rhinovirus

B. Coronavirus

C. Pneumococcus

D. Streptococcus

**Answer: A**



**Watch Video Solution**

**62.** Which of the following parameters are responsible for increasing and decreasing the size of the population ?

A. natality and mortality

B. mortality and natality

C. natality + immigration and mortality + emigration

D. natality + emigration and mortality + immigration

**Answer: C**



 [Watch Video Solution](#)

63. Which of the following causes malignant malaria ?

- A. Plasmodium vivax
- B. Plasmodium falciparum
- C. Plasmodium ovale
- D. Plasmodium malaria

**Answer: B**

 [Watch Video Solution](#)

64. Match the following ( with respect to flowers and family ) .

I	II
(1) Actinomorphic, trimerous	(a) Solanaceae
(2) Zygomorphic, pentamerous	(b) Liliaceae
(3) Actinomorphic, pentamerous	(c) Cruciferae
(4) Actinomorphic, tetramerous	( d ) Fabaceae

A. 1-a,2-b,3-c,4-d

B. 1-a,2-c,3-c,4-b

C. 1-b,2-d,3-a,4-c

D. 1-d,2-c,3-a,4-b

**Answer: C**



**Watch Video Solution**

65. Which of the following is not a character of racemose ?

- (a.) The floral axis shows continuous growth
- (b.) The basal flower is older , and the apical flower is younger.
- (c.) The flower opens from th periphery to the center .
- (d.) The arrangement is basipetal.

A. a and c

B. b and d

C. Only c

D. Only d

**Answer: D**



[Watch Video Solution](#)

66. Which one of the following statements is correct ?

- A. Patients , who had undergone surgery are given cannabinoids to relieve pain
- B. Benign tumours show the property of metastasis
- C. Heroin accelerates body functions
- D. Malignant tumours may exhibit

**Answer: D**



**Watch Video Solution**

**67.** Identify blanks A, B ,C and D.

- i. The arrangement of leaves on branches and stem is called ....A .....
- ii. The arrangement of the ovule in the ovary is called .....B.....
- iii. The arrangement of the lateral root on the taproot is .....C.....
- iv. The arrangement of flowers on the floral axis is called .....D.....

A. *A*                      *B*                      *C*                      *D*  
 Inflorescence    Phyllotaxy    Placentation    Acropetal

B. *A*                      *B*                      *C*                      *D*  
 Acropetal    Phyllotaxy    Inflorescence    Placentation

- C. *A*                      *B*                      *C*                      *D*  
Phyllotaxy   Placentation   Acropetal   Inflorescence
- D. *A*                      *B*                      *C*                      *D*  
Placentation   Inflorescence   Placentation   Acropetal

**Answer: C**



[Watch Video Solution](#)

68. Which of the following is an example of stem and leaf tendril , respectively ?

- A. Peas and cucumber
- B. Cucumber and peas
- C. peas and pumpkin
- D. Hibiscus and cucumber

**Answer: B**



[Watch Video Solution](#)

69. Match column I with column II , choose the answer Which given the correct combination of the alphabets of the two columns

<u>Column I</u>	<u>column II</u>
A. Wheat	p. Pusa Komal
B. Chilli	q. Himgiri
C. Cauliflower	r. Pusa Sadabahar
D. Cowpea	s. Pusa Shubhra

A. A = s, B = q, C = r, D = p

B. A = q, B = r, C = s, D = p

C. A = s, B = r, C = q, D = p

D. A = r, B = q, C = s, D = p

**Answer: B**

 [Watch Video Solution](#)

70. Fill in the blanks with a suitable word .

i. The vertical distribution of different species occupying different levels is called .....a.....

ii. The breakdown of detritus into smaller particles is called .....b.....

iii. In each trophic level , a certain mass of living material at a particular time is called .....c.....

- |    |                            |                            |                           |
|----|----------------------------|----------------------------|---------------------------|
| A. | <i>a</i><br>Stratification | <i>b</i><br>Fragmentation  | <i>c</i><br>Standing crop |
| B. | <i>a</i><br>Fragmentation  | <i>b</i><br>Stratification | <i>c</i><br>Standing crop |
| C. | <i>a</i><br>Standing crop  | <i>b</i><br>Mineralization | <i>c</i><br>Decomposition |
| D. | <i>a</i><br>Standing crop  | <i>b</i><br>Humification   | <i>c</i><br>Production    |

**Answer: A**



**Watch Video Solution**

71. Which one of the following statements is true regarding digestion and absorption of food in humans?

- A. Oxyntic cells in our stomach secrete the proenzyme pepsinogen.
- B. Fructose and amino acids are absorbed through intestinal mucosa with the help of carrier ions like  $K^+$  .

C. Chylomicrons are small lipoprotein particles that are transported from the intestine into lacteals .

D. About 60 % of starch is hydrolysed by salivary amylase in our mouth .

**Answer: C**

 [Watch Video Solution](#)

**72.** Which one of the following statements is correct for secondary succession?

A. It begins on bare rock It occurs on a deforested site

B. It occurs on a deforested site

C. It follows primary succession

D. It is similar to primary succession except that it has a relatively fast pace



**Answer: B**



**Watch Video Solution**

**73.** According to Robert Contanza, what percentage of the total cost of various ecosystem services is used for nutrient recycling and recreation activity?

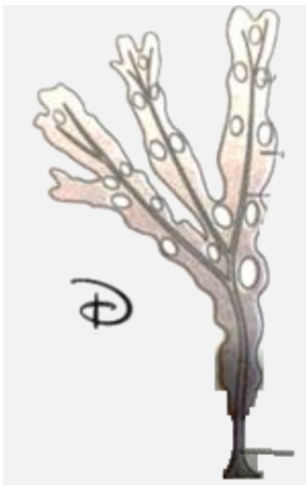
- |    |                                     |                             |
|----|-------------------------------------|-----------------------------|
| A. | Nutrient recycling<br>Less than 10% | Recreation<br>More than 10% |
| B. | Nutrient recycling<br>Less than 10% | Recreation<br>Less than 10% |
| C. | Nutrient recycling<br>More than 10% | Recreation<br>More than 10% |
| D. | Nutrient recycling<br>6%            | Recreation<br>6%            |

**Answer: B**



**Watch Video Solution**

74. Identify the figures.



	<i>A</i>	<i>B</i>	<i>C</i>	<i>D</i>
A.	Ginkgo (Pteridophyte) <i>A</i>	Salvinia (Gymnosperm) <i>B</i>	Sphagnum (Algae) <i>C</i>	Fucus (Bryophyte) <i>D</i>
B.	Ginkgo (Gymnosperm) <i>A</i>	Salvinia (Pteridophyte) <i>B</i>	Sphagnum (Bryophyte) <i>C</i>	Fucus (Algae) <i>D</i>
C.	Salvinia (Pteridophyte) <i>A</i>	Ginkgo (Gymnosperm) <i>B</i>	Fucus (Algae) <i>C</i>	Sphagnum (Bryophyte) <i>D</i>
D.	Ginkgo (Gymnosperm)	Sphagnum (Bryophyte)	Salvinia (Pteridophyte)	Fucus (Algae)

**Answer: B**



**Watch Video Solution**

**75.** Which of the following is correct with respect to kingdom Plantae?

- (a.) All plants are heterosporous.
- (b.) All plants contain vascular tissue.
- (c.) In plants, antheridia are the female sex organ.
- (d.) Except for algae, all plants bear embryo.

A. a and c

B. b and d

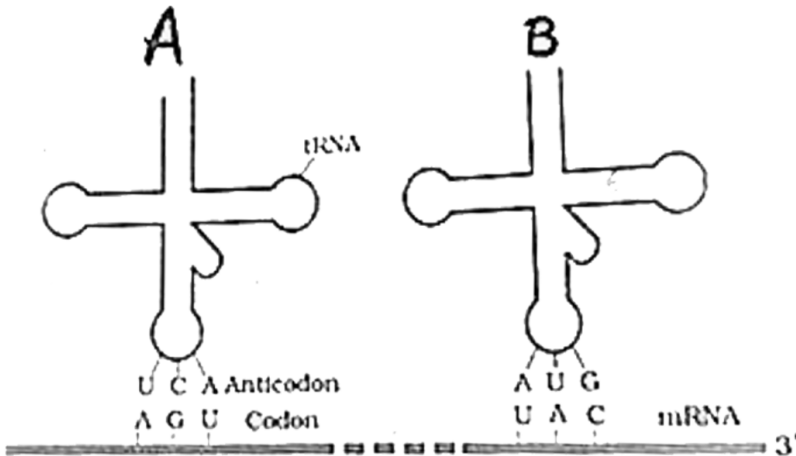
C. a , b and c

D. Only d

**Answer: D**

 [Watch Video Solution](#)

76. Which amino acid will be carried at the acceptor arm of A and B tRNA in the figure given below?



A. A - tyrosine , B - serine

B. A - serine , B - tyrosine

C. A - methionine , B - tryptophan

D. A - tryptophan , B - serine

**Answer: B**



[Watch Video Solution](#)

77. In prokaryotes, the regulation of gene expression occurs at

A. transcriptional level.

B. transport of mRNA from nucleus to the cytoplasm.

C. translation level .

D. more than one option is correct.

**Answer: A**



[Watch Video Solution](#)

78. The given figure can be corresponded to:



- A. Packaging of DNA helix
- B. Reverse flow of information
- C. Central dogma
- D. Updated central dogma

**Answer: C**

[▶ Watch Video Solution](#)

79. Which of the following is incorrect regarding oxidative phosphorylation?

- A. Oxidation of 1 molecule of NADH gives 3 molecules of ATP.
- B. The role of oxygen is limited to the terminal stage of the process.

C. Oxygen acts as the final hydrogen acceptor .

D. Cytochrome c is located towards the inner side (matrix) of the inner mitochondrial membrane.

**Answer: D**



[Watch Video Solution](#)

**80.** In the presence of dilute salt solution, rate of respiration in a respiring tissue

A. Increases

B. Decreases

C. Remains constant

D. None of the above

**Answer: A**



[Watch Video Solution](#)

81. Which of the following statements with regard to photosynthesis is/are correct?

I. In  $C_3$  plants, the primary  $CO_2$  acceptor is RuBP.

II. In the photosynthetic process, PS-II absorbs energy at or just below 680 nm.

III. The chlorophyll-a that is present in the photosystem-I has absorption maxima at 680nm.

A. II and III only

B. I only

C. III only

D. I and II only

**Answer: D**



**Watch Video Solution**



82. In the Hatch and Slack pathway, malic acid is formed in

- A. Mesophyll cell maize leaf
- B. Mesophyll cell of tomato
- C. Mesophyll cell of banana
- D. Mesophyll of cactus

**Answer: A**



[Watch Video Solution](#)

83. In soybean, the fixed nitrogen is transported in the form of

- A. nitrite
- B. ureides
- C. molecular nitrogen.
- D. Protein

**Answer: B**



**Watch Video Solution**

**84.** In plants, most diffusible sugar from source to sink is

- A. Glucose
- B. Sucrose
- C. Starch
- D. Fructose

**Answer: B**



**Watch Video Solution**

**85.** Vinblastin and curcumin are

- A. Drugs

B. Toxins

C. Terpenoids

D. Essential oils

**Answer: A**



**Watch Video Solution**

**86.** In genetic engineering, after the creation of recombinant DNA, it has to be transferred into the host using a vector. Which of the following agents can be used as a vector?

A. pBR322

B. E.coli

C. Transposons

D. Mosquito

E. A disarmed Ti plasmid

A. A, C, and E

B. A, B, and E

C. A , B , and C

D. A, B, C , D and E

**Answer: A**



**Watch Video Solution**

**87.** Correct statement about restriction endonuclease.

(I) It is the enzyme which cuts DNA at a particular point.

(II) The first restriction endonuclease was HindIII.

(III) Overall,900 restriction enzymes have been isolated from about 200 strains.

(IV) Each restriction endonuclease recognizes a specific palindromic sequence.

A. I and IV are correct

B. I and II are incorrect

C. I and III are incorrect

D. I,II and IV are correct

**Answer: D**



**Watch Video Solution**

**88.** Analyze the statement given below regarding the thermal cyclor and select the option that shows incorrect statements.

I. Annealing is also called the hybridization of oligonucleotide (primer).

II. During extension, DNA polymerase polymerizes nucleotides in 5' → 3' direction.

III. Denaturation is a process of formation of H- bonds.

A. I and III

B. Only II

C. Only III

D. I and II

**Answer: C**



[Watch Video Solution](#)

89. Which of the following is incorrect about genetically modified crops?

- A. GMO crops have increased the efficiency of mineral usage by plants.
- B. Transgenic crops are more tolerant to abiotic stress.
- C. GMO crops have reduced reliance on chemical pesticides.
- D. Biofortified golden rice having high vitamin A content is an example of this.

**Answer: D**



[Watch Video Solution](#)

90. Gene therapy is the insertion of genes used in

- A. Treating especially hereditary diseases
- B. Treating communicable diseases

C. Treating accidental diseases

D. None of these

**Answer: A**



**Watch Video Solution**