



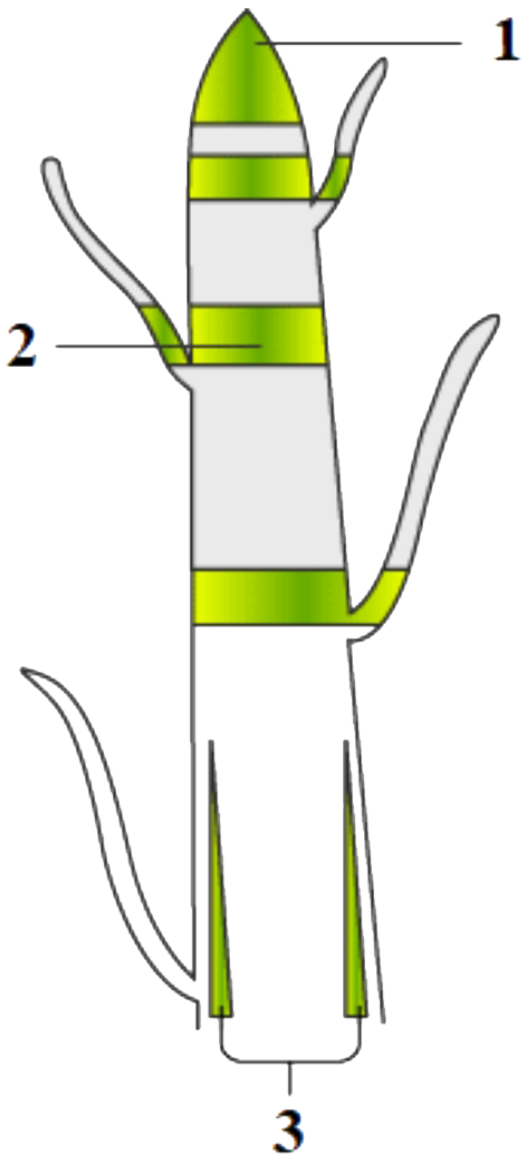
## BIOLOGY

### BOOKS - NTA MOCK TESTS

#### NTA NEET SET 49

#### Biology

1. Which of these meristems help in increasing the girth of the plant?



A. 1, Secondary meristem

B. 1, Apical meristem

C. 2, Intercalary meristem

D. 3, Lateral meristem

**Answer: D**



**Watch Video Solution**

2. Form the following select the characteristic features that is not correct for Balanoglossus?

A. Belongs to phylum that links non-chordates to chordates.

B. Excretory organ is proboscis gland.

C. Circulatory system is closed type.

D. Fertilisation is external.

**Answer: C**



**Watch Video Solution**

**3. Match the animals given in column A with their location in column B.**

| Column A               | Column B     |
|------------------------|--------------|
| (i) Dodo               | A. Africa    |
| (ii) Quagga            | B. Russia    |
| (iii) Thylacine        | C. Mauritius |
| (iv) Stellar's sea cow | D. Australia |

Choose the correct match from the following.

A. (I)-(i) , (II) - (ii) , (III) - (iii) , (IV) - (iv)

B. (I)-(iv) , (II) - (iii) , (III) - (ii) , (IV) - (i)

C. (I)-(iv) , (II) - (ii) , (III) - (iii) , (IV) - (i)

D. (I)-(iv) , (II) - (i) , (III) - (ii) , (IV) - (iii)

**Answer: B**



**Watch Video Solution**

4. By identifying the shape of the potato, select the option that represents the causative agent for this condition

A. Virus

B. Virion

C. Viroid

D. Prion

**Answer: C**



**Watch Video Solution**

**5. Select the nucleoside**

(I) Adenosine

(II) Uridylic acid (III) Uridine

(IV) Cytidylic acid

A. I and II only

B. I and III only

C. III and IV only

D. II and III only

**Answer: B**



**Watch Video Solution**

**6.** The formation of bicarbonate ion and hydrogen ion is fast near

- A. the alveolar site
- B. the tissue site
- C. in the pulmonary veins
- D. in umbilical vein

**Answer: B**



Watch Video Solution

7. Carbonic anhydrase enzyme is present in ....., ..... and for its activity the enzyme required..... as a cofactor.

- A. RBC, pancreatic cell and  $Zn^{2+}$
- B. Plasma, WBC and  $Mn^{2+}$
- C. RBC, plasma and  $Ca^{2+}$
- D. Leukocytes, macrophages and  $Zn^{2+}$

**Answer: A**



Watch Video Solution



8. Which of the following statements suggest the reason for the skin of humans to not perform as the respiratory organ?

(I) It is dry

(II) It is not thick

(III) It is not permeable to water and gases

(IV) It shows pigmentation

A. All except III

B. All except IV

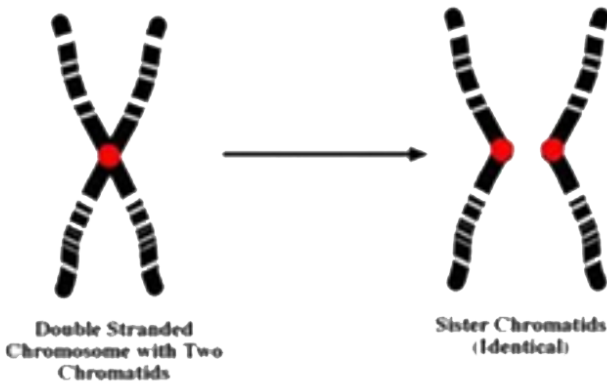
C. All except I and III

D. All except I and IV

**Answer: B**



9. Select the option regarding this diagrammatic representation.



- A. Chromosomes division during anaphase
- B. Centrosome division during metaphase
- C. Centrosome division during anaphase
- D. Chromatin division during anaphase

**Answer: C**



**Watch Video Solution**

**10.** From the following pairs determine the correctly described cellular parts.

A. Thylakoids - Flattened membranous sacs forming the grana of chloroplast.

B. Centrioles - Sites for active RNA synthesis

C. Ribosomes - Those in chloroplasts are large (80 s) while those in the cytoplasm are smaller (70 s)

D. Lysosomes - Optically active at a pH of about 8.5

**Answer: A**



**Watch Video Solution**

**11.** Select the right match of endocrine gland and their hormones among the options given below

|   |                 |     |                    |
|---|-----------------|-----|--------------------|
| A | Pineal          | i   | Epinephrine        |
| B | Thyroid         | ii  | Melatonin          |
| C | Ovary           | iii | Estrogen           |
| D | Adrenal medulla | iv  | Tetraiodothyronine |

A. a - iv , b - ii , c - iii , d - i

B. a - ii , b - iv , c - i , d - iii

C. a - iv , b - ii , c - i , d - iii

D. a - ii , b - iv , c - iii , d - i

**Answer: D**



**Watch Video Solution**

**12.** Part of the small and large intestine absorbs water and via feces, it is expected. Arrange these in order of the amount of water absorbed or secreted from greatest to smallest.

- A. Colon, jejunum, ileum
- B. Colon, ileum, jejunum
- C. Jejunum, ileum, colon
- D. Ileum, jejunum, colon

**Answer: C**



[Watch Video Solution](#)

13. Select the option from the following that relates to the statement given:

"The mass of living material at a trophic level at a particular time,"

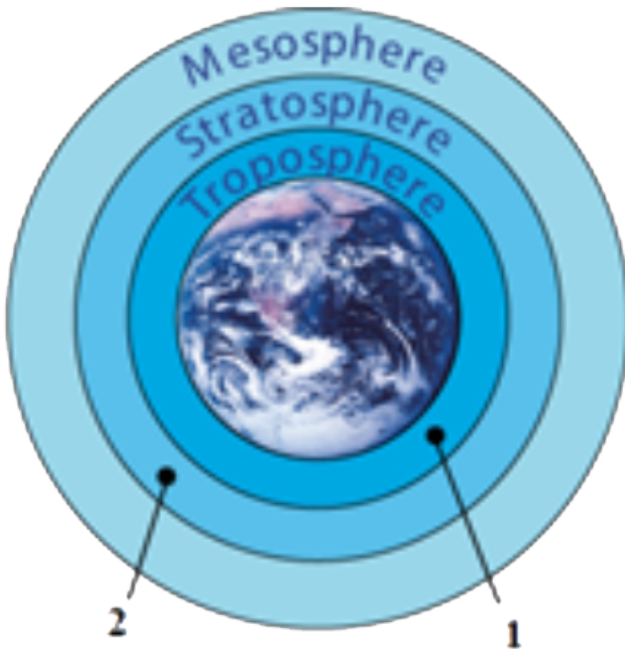
- A. Gross primary productivity
- B. Standing state
- C. Net primary productivity
- D. Standing crop

**Answer: D**



[Watch Video Solution](#)

14. Identify the labeling 1 and 2 with significance to the zone or layer of the atmosphere.



A. 1: Good zone (Mesosphere), 2: Bad zone (Stratosphere)

B. 1: Good zone (Troposphere), 2: Bad zone (Stratosphere)

C. 1: Bad zone (Troposphere), 2: Good zone (Stratosphere)

D. 1: Good zone (Troposphere), 2: Bad zone (Mesosphere)

**Answer: C**

 [Watch Video Solution](#)

**15.** Identify the one that relates to one of the key concepts of the Darwinian theory of evolution, the branching descent



A. Homology

B. Analogy

C. Vestigeal organs

D. Atavism

**Answer: A**



**Watch Video Solution**

**16.** Which one of the following parts of the nephron are lined with cuboidal epithelium with very few microvilli?

A. Proximal convoluted Tubule

B. Distal convoluted Tubule

C. Bowman's capsule

D. Glomerulus

**Answer: B**

 [Watch Video Solution](#)

17. An HIV infected individual will show a negative result for an antibody-antigen based test if the body has not produced antibodies. For such a situation, which of the following test could be used to confirm the presence of HIV?

A. MRI

B. PCR

C. ELISA

D. Widal test

**Answer: B**



**Watch Video Solution**

**18.** hCG is produced by

A. Uterus and ovary

B. Corpus luteum and Graffian follicle

C. Trophoblasts and corpus albicans

D. Syncytiotrophoblastic cells of the placenta

**Answer: D**



[Watch Video Solution](#)

19. Elbow, knee, finger joints, toe joints, ankles are good examples for

A. Saddle joint

B. Hinge joint

C. Gliding joint

D. Pivot joint

**Answer: B**



[Watch Video Solution](#)

20. Biogas is a composition of certain gases. Select the one that is not correct.

A. 30 – 40 %  $CO_2$

B. 30 – 40 %  $CO$

C. 50 – 70 %  $CH_4$

D. 1 – 5 %  $H_2$

**Answer: B**



**Watch Video Solution**

21. The correct inorganic contact of enzyme nitrogenase is

- A. Mo-Fe protein
- B. Mo-Mn protein
- C. Mn-Fe protein
- D. Cu-Fe protein

**Answer: A**

 [Watch Video Solution](#)

**22.** Select the statement that is not correct for mRNA.

- A. Monocistronic mRNA encodes only one protein
- B. A non-interrupted gene is also called a split gene

C. The mature mRNA consists exclusively of exons and has all introns removed

D. Eukaryotic RNA formed after transcription is known as precursor messenger RNA

**Answer: B**



**Watch Video Solution**

**23.** Satellite DNA has proven to have a huge application in the

A. genetic engineering

B. organ transplantation

C. sex determination

D. forensic science

**Answer: D**



**Watch Video Solution**

**24.** Identify the correct pairing from below .

(i) Cassia - Imbricate aestivation

(ii) Lady finger - Twisted aestivation

(iii) Calotropis - Vexillary aestivation

(iv) Lily - Epipetalous stamens

(v) Alsotonia - Whorled phyllotaxy

(vi) Silk cotton - Pinnately compound leaf



A. (i) , (ii) , (v)

B. (i) , (ii) , (v) , (vi)

C. (ii) , (iv) , (v) , (vi)

D. (iii) , (iv) , (v) , (vi)

**Answer: A**



**Watch Video Solution**

**25.** Select the combination that correctly matches both columns (Either structurally, functionally , or based on

location).

| Column-I                 | Column - II               |
|--------------------------|---------------------------|
| (I) Fovea centralis      | (i) Inner ear             |
| (II) Perilymph           | (ii) Blindspot            |
| (III) Vitreous humor     | (iii) Vestibular membrane |
| (IV) Reissner's membrane | (iv) Gelatinous tissue    |

A. I - i, II - ii , III - iii, IV - iv

B. I - iv, II - iii , III - ii, IV - i

C. I - ii, II - i , III - iv, IV - iii

D. I - iii, II - iv , III - i, IV - ii

**Answer: C**



**Watch Video Solution**

26. Use the below pair of names of fill the gaps in the given statement.

"Connell's elegant field experiments showed that on rock sea coasts of Scotland , the larger and competitively superior barnacle .....dominates the intertidal area, and exclude smaller barnacle ..... from that zone"

- A. Chathamalus, Balanus
- B. Balanus, Balanus
- C. Chathamalus, chhathamalus
- D. Balanus , Chathamalus

**Answer: D**



[Watch Video Solution](#)

27. Identify the reason for photorespiration not occurring in  $C_4$  plant

A.  $O_2$  is not released in  $C_4$  plant during photosynthesis

B. intracellular concentration of  $CO_2$  is high in bundle sheath

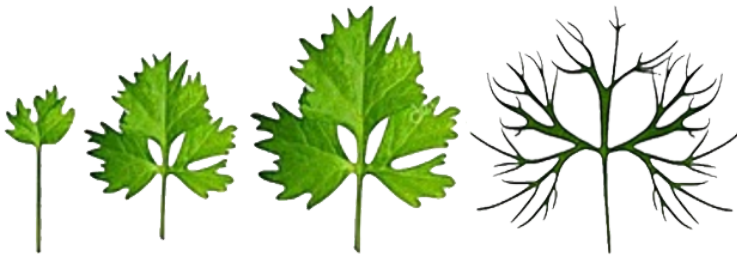
C. the intracellular concentration of  $CO_2$  is low in bundle sheath cells

D. the intracellular concentration of  $CO_2$  is high in bundle sheath and mesophyll cells

**Answer: B**



28. From the following diagram select that plant whose leaves show this type of heterophylly.



A. Cotton

B. Coriander

C. Larkspur

D. Buttercup

**Answer: D**



**Watch Video Solution**

**29.** Artificial system of classification gave equal weightage to

- A. morphological and anatomical characters
- B. vegetative and sexual characters
- C. vegetative and anatomical characters
- D. genetical and sexual characters

**Answer: B**



**Watch Video Solution**

30. Pure tall pea plant with round seeds is crossed with pure dwarf pea plant with wrinkled seeds . The probability of genotype ttRR in  $F_2$  generation is

A.  $\frac{1}{16}$

B.  $\frac{3}{16}$

C.  $\frac{9}{16}$

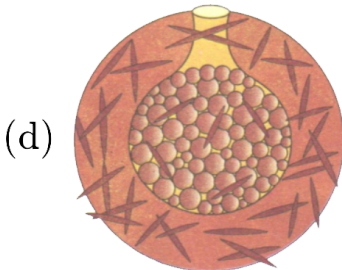
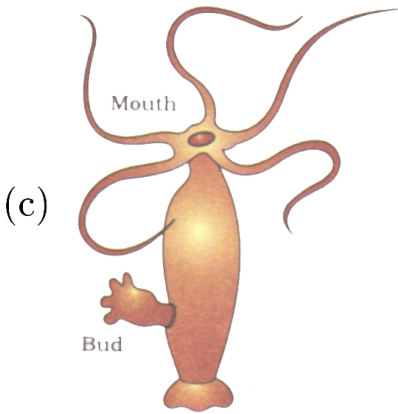
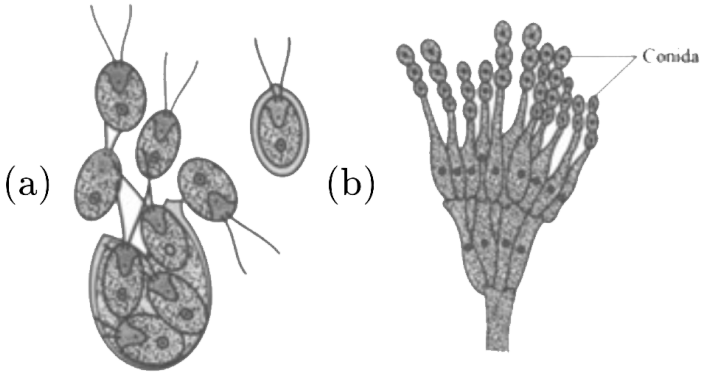
D.  $\frac{6}{16}$

**Answer: A**



**Watch Video Solution**

31. Select the correct statements regarding the figures given below





(i) (a) shows asexual reproduction through zoospores in Chlamydomonas.

(ii) (b) shows sexual reproduction through conidiophores in Penicillium.

(iii) (c) shows buds in Hydra.

(iv) (d) shows gemmules in sponge

A. (i) and (ii)

B. (i) and (iii)

C. (ii) , (iii) and (iv)

D. (i) , (iii) and (iv)

**Answer: D**



**Watch Video Solution**

32. MTP is a process to get rid of unwanted pregnancy.

Which of the following statements is not correct for MTP?

A. MTP account for nearly 1/5th of the total number of conceived pregnancies in a year all over the world.

B. MTP has a significant role in decreasing the population.

C. MTP has not a significant role in decreasing the population.

D. MTP is an important contraceptive method to control the size of the population.

**Answer: C**



**Watch Video Solution**

**33.** What the net amount of ATP produced in an aerobic glycolysis process ?

A. 2

B. 8

C. 12

D. 36

**Answer: B**



**Watch Video Solution**

**34.** How many microsporangia are present in an angiospermic anther?

A. 2

B. 3

C. 4

D. 5

**Answer: C**



**Watch Video Solution**

**35.** Somatic hybrids are created by

- A. Fusion of hybrid cells
- B. Fusion of cell walls of two somatic cells
- C. Fusion of isolated protoplast
- D. Fusion of gametes

**Answer: C**



**Watch Video Solution**

**36.** From the following determine which one is connected by areolar connective tissue ?

- A. Bone to bone
- B. Integument with muscle

C. Bone to muscle

D. Muscles to nerve

**Answer: B**

 [Watch Video Solution](#)

**37.** Select the correct statement from the following given statements.

(I) Properties of tissues are present in the constituent cell and arise as a result of interaction among them.

(II) Properties of cellular organelles are present in the molecular constituents of the organelles and arise as a result of interactions among them.

(III) Living organisms are system capable of responding to external stimuli.

A. I, II and III are correct

B. I and are correct

C. Only II is correct

D. Only III is correct

**Answer: D**



**Watch Video Solution**

**38.** Organic substances such as sugars are translocated in the phloem. This phenomenon was shown by

- A. Girdling experiment
- B. Root pressure theory
- C. Experiment by Dixon and Jolly
- D. Munch hypothesis

**Answer: A**



**Watch Video Solution**

**39.** Angiosperms are the most diverse group of plants in the plant kingdom. Select the statement from below that is correct related to them.



A. Within angiosperms, monocot & dicot are anatomically different.

B. Within angiosperms, monocot & dicot are morphologically different.

C. Within angiosperms, monocot & dicot are anatomically similar but morphologically different.

D. Within angiosperms, monocot & dicot are anatomically & morphologically same.

**Answer: B**



**Watch Video Solution**

40. Which microbe helps in providing the antibiotics erythromycin and chloramphenicol?

- A. Penicillium species
- B. Aspergillus species
- C. Streptomyces species
- D. Bacillus species

**Answer: C**



**Watch Video Solution**

41. Some structures with their function are given below, mark the wrongly matched one.

A. Choanocytes - Generation of water current

B. Pneumatic bones - Skeletal support

C. Radula - feeding

D. Statocyst - Balance organs

**Answer: B**



**Watch Video Solution**

**42.** Which one of the following will not be considered to be broadly utilitarian?

A. Pollination

B. Photosynthesis

C. Climate moderation

D. Medicines

**Answer: D**

 [Watch Video Solution](#)

**43.** Complete the sentence. Presence of ..... in the soil helps in polishing, filtration of oils and syrups.

A. cellulosic plates on surface of dinoflagellates .

B. cell wall of chrysophytes

C. Cell body of desmids

D. extremely resistant spores of slime moulds

**Answer: B**



**Watch Video Solution**

**44.** Which of the following is not correct regarding competitive inhibition?

- A. The inhibitor closely resembles the substrate in its molecules and inhibits the activity of the enzyme.
- B. They cannot be used to control bacterial pathogens.
- C. Inhibition of succinic dehydrogenase by malonate which closely resembles the substance succinate in structure is an example of it.

D. Substrate cannot bind in such type of inhibition  
thus enzyme activity declines.

**Answer: B**

 [Watch Video Solution](#)

**45.** Which of the following statements about molecular diagnosis is correct?

A. PCR can detect high amounts of viral DNA present in the diseased patient.

B. ELISA incorporates the use of a radioactive probe which is allowed to hybridise to its complementary

DNA.

C. PCR is powerful technique to identify different genetic disorders and is also used in the detection of mutated genes in suspected cancer patients,

D. Recombinant DNA technology is a risky method and hence is not used in molecular diagnosis.

**Answer: C**

 [Watch Video Solution](#)

**46.** Which of the following structures help in the absorption of fats through lymph ?

- A. Lacteals of intestinal villi
- B. Bile salts in the liver
- C. Bile acids in the stomach.
- D. Chylomicrons

**Answer: A**



**Watch Video Solution**

47. Select the one that supports the dissociation of oxyhaemoglobin in tissues .

- A. High  $pO_2$
- B. Low  $pO_2$



C. Equal  $pO_2$

D. Not dependent on  $pO_2$

**Answer: B**



**Watch Video Solution**

**48.** A typical process of cell division in a human cell approximately lasts for

A. only about an hour

B. about 12 hours

C. only about 24 hours

D. about 6 hours

**Answer: A**



**Watch Video Solution**

**49.** Identify the correct pairing regarding the structure of heterochromatin.

- A. Loosely packed, Stain light
- B. Loosely packed, Stain dark
- C. Densely packed, Stain light
- D. Densely packed, Stain dark

**Answer: D**



**Watch Video Solution**

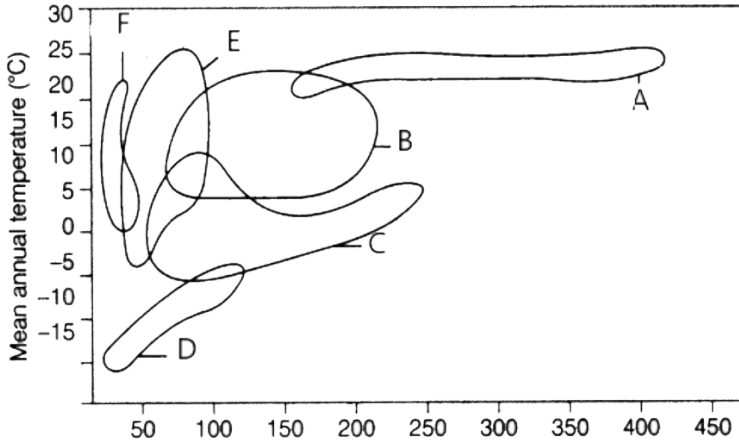
50. The some peptide hormone will show variation in response to different cells because

- A. different target cells have different sets of genes
- B. a target cell's response is determined by the components of its signal transduction pathways
- C. the circulatory system regulates response to hormone by routing the hormone to specific targets
- D. the hormone is chemically altered in different ways as it travels through the circulatory system

**Answer: B**

 [Watch Video Solution](#)

51. Choose the option with the correct labels of the diagram given below.



A. A - Desert , B - Grassland , C - Tundra

B. B - Desert , D - Tundra, F - Tropical forest

C. C - Coniferous forest , D - Tundra , E - Desert

D. A - Tropical forest , B - Temperate forest , E -  
Grassland

**Answer: D**



**Watch Video Solution**

**52.** Which one the following is not correct?

- A. The work done on the evening primrose by Hugo deVries laid the foundation of the mutation theory.
- B. Single-step large mutations are known as saltation and were considered to be the main factor in causing speciation.
- C. Darwin advocated that variations are always large but heritable changes.

D. Branching descent and natural selection are the two key concepts of the Darwinian Theory of Evolution.

**Answer: C**



**Watch Video Solution**

**53.** Determine the activity where a interferon, a biological response modifier, is involved

A. Activation of immune system

B. Suppression of immune system

C. Making cancerous cells detectable by immune system

D. Both (A) and (c)

**Answer: D**

 **Watch Video Solution**

**54.** Below figure represents one of the stages of embryo development in human. Determine the row that correctly identifies the labels *A* and *B* with their respective functions.

|     | <i>A</i>        | <i>B</i>        | Function of <i>A</i>          | Function of <i>B</i>          |
|-----|-----------------|-----------------|-------------------------------|-------------------------------|
| (1) | Ectoderm        | Endoderm        | Differentiated as embryo      | Get attach to the endometrium |
| (2) | Trophoblast     | Inner cell mass | Differentiated as embryo      | Get attach to the endometrium |
| (3) | Inner cell mass | Trophoblast     | Differentiated as embryo      | Get attach to the endometrium |
| (4) | Trophoblast     | Inner cell mass | Get attach to the endometrium | Differentiated as embryo      |

A. 1

B. 2

C. 3

D. 4

**Answer: C**



**Watch Video Solution**

**55.** A person is found to be suffering from neuromuscular junctions leading to fatigue, weakening and and muscular paralysis of muscles possible via autoimmune disorder. Which of the following disease is the patient most likely suffering from?



A. Muscular dystrophy

B. Muscular tetany

C. Myasthenia gravis

D. Poliomyelitis

**Answer: C**



**Watch Video Solution**

**56.** Select the option that correctly represents: coding sequence of DNA and Non- coding sequence of DNA, respectively.

A. exon, intron

B. intron, exon

C. cistron, exon

D. exon, cistron

**Answer: A**



**Watch Video Solution**

**57.** Which of these fruits are obtained from polycarpellary apocarpous gynoecium?

A. composite fruit

B. simple fruit

C. aggregate fruit

D. false fruit

**Answer: C**



**Watch Video Solution**

**58.** Select the statements that are correct for conditioned reflex.

- (1) Acquired by practice or learning
- (2) Does not abolish by lack of practice
- (3) Participation of cerebral cortex.
- (4) Originates spontaneously.

A. 1,2,3

B. 1 & 3

C. Only 1

D. 2 & 4

**Answer: B**

 [Watch Video Solution](#)

**59.** From the following, identify the pair of species that shows co-evolution.

A. Fig trees and pollinator species of wasp

B. Fungus and cyanobacteria

C. Sea anemone and clown fish

D. All of them

**Answer: A**



**Watch Video Solution**

**60.** Which of the following is not correctly matched?

A. Calvin cycle in bundle sheath cells - Maize

B. HSK pathway -OAA

C. Photorespiration - Less productivity

D. RuBisCO - kranz anatomy

**Answer: D**



**Watch Video Solution**

**61.** To increase the length of grape stalks gibberellin are applied. The mechanism of action of gibberellin exploited in this case is its

- A. ability to increase length of apex.
- B. ability to increase in the length of the axis.
- C. ability to avoid apical dominance.
- D. all of these.

**Answer: B**



**Watch Video Solution**

**62.** Read the following statements and use one of the combinations to fill the gaps. In *Chlamydomonas*, *Volvox*,

& spirogyra fusion of gametes is..... , .....& .....  
respectively

- A. isogamous , anisogamous & oogamous
- B. oogamous ,isogamous & anisogamous
- C. anisogamous ,oogamous & isogamous
- D. isogamous , isogamous & anisogamous

**Answer: C**

 [Watch Video Solution](#)

**63.** In which of the following female is heterogametic ?

- A. Drosophila

B. Human

C. Fowl

D. Honey bee

**Answer: C**



**Watch Video Solution**

**64.** CDRI is created for developing

A. Saheli

B. Genetically engineered insulin

C. MALA-D

D. Vasectomy



**Answer: A**

 [Watch Video Solution](#)

**65.** Which of the following will produce adenosine triphosphate by substrate - level phosphorylation ?

- A. 2 - phosphoglycerate to 2 - phosphoenol pyruvate
- B. Glucose to Glucose - 6 - phosphate
- C. Phosphoenol pyruvic acid to pyruvic acid
- D. Fructose 1 , 6 - biphosphate to PGAL and DHAP C

**Answer: C**

 [Watch Video Solution](#)

66. Select the statement that is not correct.

- A. In aquatic plants like water hyacinth, pollination is carried out by insect or wind
- B. In Vallisneria , the male flowers reach the surface of the water by a long stalk to liberate pollen grains.
- C. In seagrasses , female flowers remain submerged in water.
- D. Vallisneria and Hydrilla grow in freshwater while Zostera grows in seawater.

**Answer: B**



**Watch Video Solution**

67. What would be the genotype of :

(i) An individual who is carrier of sickle cell anaemia gene but apparently unaffected .

(ii) An individual affected with the disease .

A. (i)  $Hb^A Hb^S$

(ii)  $Hb^A Hb^S$

B. (i)  $Hb^A Hb^S$

(ii)  $Hb^S Hb^S$

C. (i)  $Hb^S Hb^S$

(ii)  $Hb^A Hb^S$

D. (i)  $Hb^A Hb^A$

(ii)  $Hb^A Hb^S$

**Answer: B**



**Watch Video Solution**

**68.** Which of the following is correct about embryo development in *Periplaneta americana* ?

- A. No metamorphosis
- B. Direct metamorphosis
- C. Complete metamorphosis
- D. Paurometaboly

**Answer: D**



**Watch Video Solution**

**69.** Select the correct combination of true and false for the given statements about pollen grain cells.

(1) The vegetative cell has an abundant food reserve.

(2) The vegetative cell has large irregularly shaped nucleus.

(3) The generative cell is small and is fixed in the cytoplasm of the vegetative cells.

(4) The generative cell is spindle - shaped and has dense cytoplasm .

A. 1 - True , 2 - True , 3 - True and 4 - True

B. 1 - True , 2 - True , 3 - False and 4 - True

C. 1 - True , 2 - False , 3 - True and 4 - True

D. 1 - False , 2 - True , 3 - True and 4 - False

**Answer: B**



**Watch Video Solution**

**70.** In 1992 , a biological diversity convention was held in Rio de Janeiro , also known as .....

- A. CITES Convention
- B. The Earth Summit
- C. G - 16 Summit
- D. MAB Programme

**Answer: B**



**Watch Video Solution**

71. R.H . Whittaker used certain criteria for making the five - kingdom classification From the following how many are not a part of those criteria?

Cell Structure , Thallus organization , mode of nutrition , reproduction , phylogenetic relationships , body organization , locomotion

A. 1

B. 2

C. 3

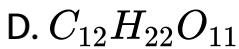
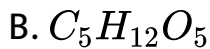
D. 4

**Answer: B**



**Watch Video Solution**

72. Which one will be the molecular formula for the sugar involved in making RNA ?



**Answer: A**



**Watch Video Solution**

73. Which if the following is not applicable for Bt - cotton ?



- A. It is a GM plant .
- B. It shows insect resistance
- C. It has a bacterial gene expressing in its system.
- D. It is resistant to all pesticides .

**Answer: D**



**Watch Video Solution**

**74.** Which of the following helps in the storage of reserve materials in the cytoplasm of a bacterial cell ?

- A. Vacuoles
- B. Leucoplast

C. Inclusion bodies

D. Polysomes

**Answer: C**

 [Watch Video Solution](#)

**75.** Match the organs with their disease and select the appropriate combination .

- |                       |                      |
|-----------------------|----------------------|
| (a) Addison's disease | (i) Pituitary        |
| (b) Tetany            | (ii) Thyroid         |
| (c) Acromegaly        | (iii) Adrenal cortex |
| (d) Myxedema          | (iv) Parathyroid     |

A. (a) - (iii) , (b) - (ii) , (c) - (i) , (d) - (iv)

B. (a) - (i) , (b) - (iii) , (c) - (ii) , (d) - (iv)

C. (a) - (iii) , (b) - (iv) , (c) - (i) , (d) - (ii)

D. (a) - (iii) , (b) - (iv) , (c) - (ii) , (d) - (i)

**Answer: C**

 [Watch Video Solution](#)

**76.** Which of the following will relate to vertical distribution of different species occupying different levels of ecosystem ?

A. Physiognomy

B. Pyramid of numbers

C. Stratification

D. Succession

**Answer: C**



**Watch Video Solution**

77. Sequences of DNA can be removed from a genome with the help of

- A. Molecular glue
- B. Molecular scissors
- C. Ligases
- D. Nucleases

**Answer: B**



[Watch Video Solution](#)

78. In which of the following , replum can be seen ?

A. Brassica

B. Pisum

C. Hibiscus

D. Dianthus

**Answer: A**



[Watch Video Solution](#)

**79.** Match the disease / condition with their characteristics .

|     | Disease                |       | Symptom                                     |
|-----|------------------------|-------|---|
| (1) | Haemophilia            | (i)   | Broad palm with characteristic palm creased |
| (2) | Down's syndrome        | (ii)  | Delayed clotting of blood                   |
| (3) | Klinefelter's syndrome | (iii) | Gynaecomastia                               |
| (4) | Turner's Syndrome      | (iv)  | Rudimentary ovaries                         |

A. 1 -i, 2- iii, 3 - ii, 4 - iv

B. 1 -ii, 2- i, 3 - iii, 4 - iv

C. 1 -iv, 2- ii, 3 - i, 4 - iii

D. 1 -i, 2- ii, 3 - iii, 4 - iv

**Answer: B**



**Watch Video Solution**

**80.** Which of the following provides the enzyme required to dissolve the callose plugs of pollen tetrads ?

- A. Epithelium
- B. Tapetum
- C. Middle layer
- D. Endothecium

**Answer: B**



**Watch Video Solution**

**81.** In which of the following pair the occurrence of dikaryophase of fungus can be observed ?

- A. Ascomycetes and Basidiomycetes
- B. Phycomycetes and Ascomycetes
- C. Phycomycetes and Basidiomycetes
- D. Basidiomycetes and Deuteromycetes

**Answer: A**



**Watch Video Solution**

**82.** There are certain sequences of DNA that are termed as mobile or jumping genes and are useful as vectors. Such



sequences are called as

A. YAC

B. Plasmid

C. Transposons

D. Phasmid

**Answer: C**



**Watch Video Solution**

**83.** The electronic appliances that are not in use will eventually form part of

A. Radioactive wastes

B. Chemical weed

C. e - wastes

D. Mist

**Answer: C**



**Watch Video Solution**

**84.** The map distance between genes A and B is 3 units, between B and C is 10 units and between C and A is 7 units. Which of the following shows the correct order of the genes in a linkage map on the above data ?

A. A,B,C

B. A,C,B

C. B,C,A

D. C,A,B

**Answer: D**



**Watch Video Solution**

**85.** Which of the following is not a vestigial organ ?

A. Presence of tail newly born human baby

B. Wisdom teeth of human

C. Appendix of human

D. Hind limb bones and pelvic girdle in Python and whale

**Answer: A**



**Watch Video Solution**

**86.** Gambusia fish is successfully utilized for

- A. Kill causative agent of malaria
- B. Destroy the vector agent of malaria
- C. Destroy larval stage vector of malaria responsible for transmitting the disease.
- D. Make the environment unfavorable for growth of vector agent of malaria

**Answer: C**



**87.** The organs involved in the reproductive system can be grouped as primary and secondary. Which of the following is not a secondary sex organ ?

(1) Prostate gland

(2) Mammary gland

(3) Seminal vesicle

(4) Ovary

A. Only (2)

B. Both (2) & (4)

C. Only (4)

D. (1) , (2) & (3)

**Answer: C**



**Watch Video Solution**

**88.** Venation relates to

- A. floral organs.
- B. flower in inflorescence.
- C. veins and veinlets in a lamina .
- D. All of them

**Answer: C**



**Watch Video Solution**

**89.** The zygosity of an organism for a particular phenotype can be identified by crossing it with

A. AaBb

B. aabb

C. aaBb

D. Aabb

**Answer: B**



**Watch Video Solution**

**90. Match Column I with Column II.**

|     | Column I    |       | Column II  |
|-----|-------------|-------|--|
| (1) | Xenogamy    | (i)   | Transfer of pollen grain from the anther to the stigma of another flower of the same plant |
| (2) | Autogamy    | (ii)  | Transfer of pollen grain from the anther to the stigma of the same flower                  |
| (3) | Cleistogamy | (iii) | Transfer of pollen grain from the anther to the stigma of different plant                  |
| (4) | Geitonogamy | (iv)  | Flowers are invariably autogamous which do not open at all                                 |

A. (1) – (iv), (2) – (iii), (3) – (i), (4) – (ii)

B. (1) – (iii), (2) – (ii), (3) – (i), (4) – (iv)



C. (1) – (iii), (2) – (ii), (3) – (iv), (4) – (i)

D. (1) – (i), (2) – (iii), (3) – (iv), (4) – (ii)

**Answer: C**



**Watch Video Solution**