



# BIOLOGY

## BOOKS - NTA MOCK TESTS

### NTA NEET SET 54

#### Biology

1. Which of the following is not relevant to the structure of double helical DNA

A. The helix makes one complete spiral turn every  $34\text{\AA}$

B. The diameter of the helix is  $20\text{\AA}$

C. The distance between adjacent nucleotide is  $3.4\text{\AA}$

D. Each strands of helix has a backbone made up of alternating ribose sugar and phosphate

**Answer: D**



**Watch Video Solution**

2. Choose the incorrect statement about phycomycetes.

A. Members are found in aquatic habitats.

B. Spores are endogenously produced in sporangium.

C. A zygospore is formed by reduction division.

D. They show all type of syngamy.

**Answer: C**



**Watch Video Solution**

**3. Some characters are given below**

- i. Bilaterally symmetrical
- ii. Triploblastic
- iii. Segmented
- iv. Coelomate

Which of the two phyla are characterized by the above all characters?

A. Annelida and Arthropoda

B. Annelida and Mollusca

C. Arthropoda and Mollusca

D. Arthropoda and Echinodermata

**Answer: A**



**Watch Video Solution**

**4. In  $C_4$  plants, Calvin cycle operates in**

A. Stroma of bundle sheath chloroplasts

B. Grana of bundle sheath chloroplasts

C. Grana of mesophyll chloroplasts

D. Stroma of mesophyll chloroplasts

**Answer: A**



**Watch Video Solution**

**5.** as compared to a dicot root, a monocot root has

A. Many xylem bundles.

B. Relatively thicker periderm.

C. Inconspicuous annual rings.

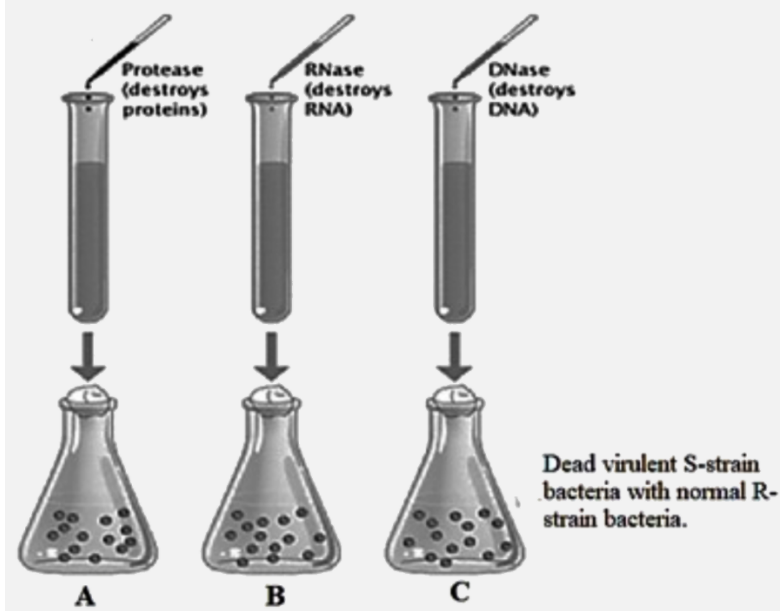
D. More abundant secondary xylem

**Answer: A**



**Watch Video Solution**

**6.** Examine the diagram and identify the correction option.



A. C-Transformation does not occur, no change and only R-strain will be observed.

B. A-Transformation occurs and new R-strain will be converted to S-strain



C. B-Transformation occurs and all the S-strain will be transformed to R-strain

D. B-Transformation does not occur and new - S - strain appears mixed with R - strain

**Answer: A**



**Watch Video Solution**

**7. Potatoes are**

- A. Collenchymatous tubers
- B. Parenchymatous tubers
- C. Sclerenchymatous tubers
- D. None of these

**Answer: B**



**Watch Video Solution**

**8. Nor epinephrine is secreted from**

- A. Zona glomerulosa

B. Zona fasciculata

C. Zona reticularis

D. Suprarenal medulla

**Answer: D**



**Watch Video Solution**

9. The volume of air in the dead space for human lungs is normally

A. 230 mL

B. 210 mL

C. 190 mL

D. 159mL

**Answer: D**



**Watch Video Solution**

**10.** Which one of the following is not characteristic feature of bryophytes ?

A. Dominant gametophytic generation

B. Filamentous rhizoids

C. Amphibious habitat

D. Formation of accessory spores

**Answer: D**



**Watch Video Solution**

**11.** Which of the following option is incorrect w.r.t. to the given diagram?



- A. Well exposed stamens
- B. Pollen grains are light and sticky
- C. Feathery stigma to trap pollen grains
- D. It is quite common in grasses

**Answer: B**



**Watch Video Solution**

**12.** What is true about Nereis, scorpion, cockroach and silver fish ?

- A. They all posses dorsal heart
- B. None of them in aquatic
- C. They all belong to the same phylum
- D. They all have joined paired appendages

**Answer: A**



**Watch Video Solution**

**13.** The table below gives the populations (in thousands) of ten species (A-J) in four areas (a-d) consisting of the number of habitats given

within brackets against each. Study given  
within brackets against each. Study the table  
and answer the question which follows



Which area out of a to d shows maximum  
species diversity ?

A. b

B. c

C. d

D. a

**Answer: C**





[Watch Video Solution](#)

**14. Ozone hole is maximum over**

A. India

B. Europe

C. Antarctica

D. Africa

**Answer: C**



[Watch Video Solution](#)

15. column I lists the components of body defense and column II lists the corresponding descriptions. Match the two columns. Choose the correct option from those given

**Column I**

**Column II**

- |                             |   |
|-----------------------------|---|
| A. Active natural immunity  | p. Injection of gamma globulins                               |
| B. First line of defense    | q. Complement proteins and interferons                        |
| C. Passive natural immunity | r. Direct contact with the pathogens that have entered inside |
| D. Second line of defense   | s. Surface barriers   |
|                             | t. Antibodies transferred through the placenta                |

A. *A B C D*  
4 3 5 2

B. *A B C D*  
3 4 2 5

C. 

<i>A</i>	<i>B</i>	<i>C</i>	<i>D</i>
3	4	5	2

D. 

<i>A</i>	<i>B</i>	<i>C</i>	<i>D</i>
5	3	2	1

**Answer: C**



**Watch Video Solution**

**16.** In *Funaria*, the number of peristome teeth in exostome is

A. 8

B. 16

C. 32

D. 64

**Answer: C**



**Watch Video Solution**

**17.** which of the following taxonomical ranks contain organisms least similar to one another

A. Class

B. Genu

C. Family

D. Species

**Answer: A**



**Watch Video Solution**

**18.** Which of the following is not found in birds?

A. Hind limb

B. Fore limb

C. Pelvic girdle

D. Pectoral girdle

**Answer: B**



**Watch Video Solution**

**19.** The ovary is half inferior in flowers of

A. Peach

B. Cucumber

C. Cotton

D. Guava

**Answer: B**



**Watch Video Solution**

**20.** Given below are four matchings of an animal and its kind of respiratory organ

(i). Silverfish - Trachea

(ii). Scorpion - Book lung

(iii). Sea squirt - pharyngeal gills

(iv). Dolphin - Gills

The correct matchings are

A. II and IV

B. III and IV

C. I and IV

D. I , II and III

**Answer: D**



**Watch Video Solution**



21. Bacteriophage is made up to

A. Carbon and nitrogen

B. DNA

C. Nucleoprotein ( Nucleic acid + protein )

D. Protein only

**Answer: C**



**Watch Video Solution**

**22. Choose the correct statement**

A. All Proteins have 18 amino acids

B. Both ends of a protein are similar

C. All proteins are soluble

D. Proteins are formed by amide C - N  
bonds

**Answer: D**



**Watch Video Solution**

23. Which is related with ringworm

(i) Microsporum

(ii) Trichophyton

(iii) Epidermophyton

A. i

B. i,ii

C. i,iii

D. i,ii, iii

**Answer: D**



**Watch Video Solution**

24. Single cell protein can be useful in all, except

- A. Reducing environmental pollution
- B. Decreasing pressure on agriculture
- C. Preventing shift from meat to grain as diet by human beings
- D. Being acceptable as food in future

**Answer: C**



25. Which one of the following statements is totally wrong about the occurrence of notochord, while the other three are correct?

A. It is present only in larval tail in

Ascidians

B. It is replaced by a vertebral column in

adult frog

C. It is absent throughout life in humans  
from the very beginning

D. It is present throughout life in  
Amphioxus

**Answer: C**



**Watch Video Solution**

**26.** In which one of the following reactions,  
oxidative decarboxylation does not occur ?

A. Malic acid  $\rightarrow$  Pyruvic acid

B. Pyruvic acid  $\rightarrow$  Acetyl Co - A

C. Glyceraldehyde 3- phosphate  $\rightarrow$  1,3  
bisphosphoglyceric acid

D.  $\alpha$  ketoglutaric acid  $\rightarrow$  Succinyl Co - A

**Answer: C**



**Watch Video Solution**

**27. Stratified squamous epithelium is found in**

A. Pharynx

B. Trachea

C. Ileum

D. Bowman's capsule

**Answer: A**



**Watch Video Solution**

**28.** The entry in the table is wrongly matched ,  
identify





A. a

B. b

C. c

D. d

**Answer: C**



**Watch Video Solution**

**29. Heterospory is found in**

A. Selaginella

B. Isoetes

C. Marselia

D. All the above

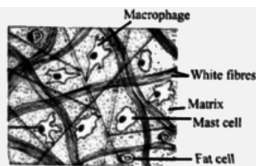
**Answer: D**

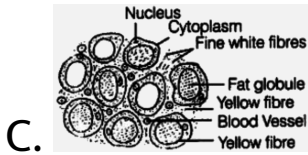
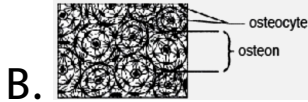


**Watch Video Solution**

**30.** The blubber is formed by

**A.**





**Answer: C**



**Watch Video Solution**

**31.** If producer is a large tree that supports a number of herbivorous animals which are

further attacked by ectoparasites, the pyramid of number shall be

- A. Inverted
- B. Upright
- C. Irregular
- D. Spindle shaped

**Answer: A**



**Watch Video Solution**

32. Superovulation and embryo transplantation techniques are being used for improving

A. the quality of milk in various breeds of cows.

B. the quality of meat in various breeds of bull.

C. breeds of rabbits and sheep.

D. All of these

**Answer: D**



**Watch Video Solution**

**33.** Find the correctly matched pair.

A. Pineal gland - doesn't influence  
menstrual cycle

B. Interstitial cells - erythropoietic

C. Corpus luteum - secretes oxytocin

D. Cholecystokinin - stimulates pancreatic  
enzyme secretions

**Answer: D**



**Watch Video Solution**

**34.** How many amino acids will be coded by  
following given or more than one cytosine  
represent the intron?

AUG CCC CAC CAC UUA UAU AUA GGC GAC AAA

GCG UUU CAU UAA

A. 7

B. 8

C. 10

D. 11

**Answer: A**



**Watch Video Solution**

**35.** The number of sex chromosomes is found to be normal in



- A. Super female
- B. Turner's syndrome
- C. Klinefelter's syndrome
- D. Down's syndrome

**Answer: D**



**Watch Video Solution**

**36.** The scapula is a large triangular flat bone situated in the dorsal part of the thorax between

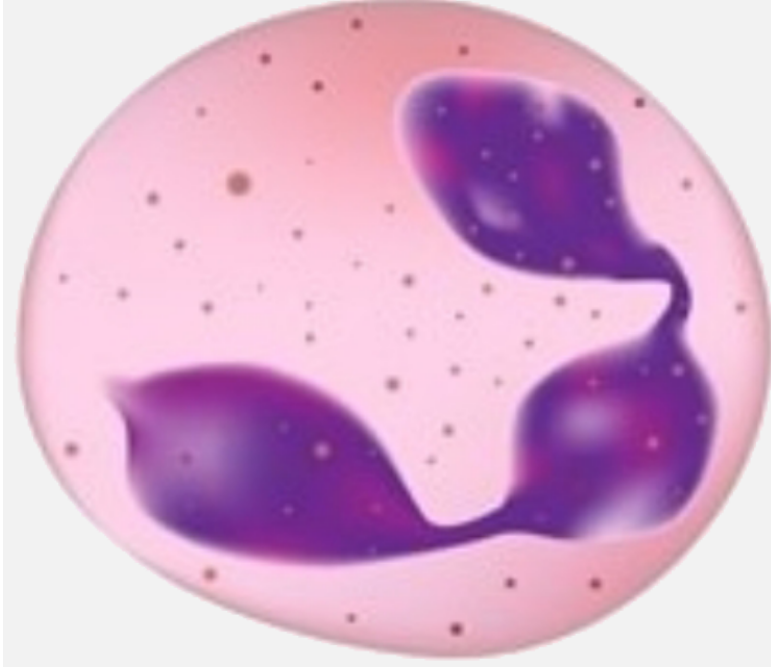
- A. Second and fifth ribs
- B. Second and seventh ribs
- C. Third and eighth ribs
- D. Fourth and seventh ribs

**Answer: B**



**Watch Video Solution**

**37.** Given below a diagram of a type of WBC.  
Identify and select the correct option.



A. It is basophil and its (i) No. = 0.5 - 1 %

(ii) function - To secrete histamine,

Heparin and serotonin

B. It is Neutrophils and its (i) No. = 60 - 65

%

(ii) function :- To destruct microbes

C. It is Eosinophils and its (i) No. = 2-3 %

(ii) function - protection against  
infection

D. It is neutrophils and its (i) No. = 6-8 %

(ii) function - phagocytosis

**Answer: B**



**Watch Video Solution**

**38.** The logistic population growth is expressed by the equation

A.  $dt / dN = Nr \left( \frac{k - N}{K} \right)$

B.  $dN / dt = rN \left( \frac{k - N}{K} \right)$

C.  $dN/dt = rN$

D.  $dN / dt = rN \left( \frac{N - K}{N} \right)$

**Answer: B**



**Watch Video Solution**

**39.** Find out the wrongly matched pair.

A. Secondary metabolite - Anthocyanin

B. Protein - Insulin

C. Chitin - polysaccharide

D. Cellulose - Heteropolymer

**Answer: D**



**Watch Video Solution**

**40.** The first movements of the foetus and appearance of hair on its head are usually observed during which month of pregnancy ?

A. Fourth month

B. Sixth month

C. Third month

D. Fifth month

**Answer: D**



**Watch Video Solution**

**41.** Two crosses between the same pair of genotypes or phenotypes in which the source of the gametes are reversed in one cross, is known as–

- A. Reverse cross
- B. Test cross
- C. Reciprocal cross
- D. Dihybrid cross

**Answer: C**



**Watch Video Solution**



42. A plant placed near a window bends outward because

- A. Its tip is able to get more oxygen
- B. Its tip is able to obtain more light
- C. Its tip is able to receive necessary warmth
- D. Its tip has auxin which is responsible for phototropic movement.

**Answer: D**



Watch Video Solution

**43.** Which one of the following pairs is mismatched ?

A. Fossil fuel burning - release of  $CO_2$

B. Nuclear power - radioactive wastes

C. Solar energy - green house effect

D. Biomass burning - release of  $CO_2$

**Answer: C**



Watch Video Solution

**44.** Which one of the following correctly matches a sexually transmitted disease (STD) with its pathogen?

A. AIDS – *Bacillus anthracis*

B. Syphilis – *Treponema pallidum*

C. Urethritis – *Entamoeba gingivalis*

D. Gonorrhoea – *Leishmania donovani*

**Answer: B**



[Watch Video Solution](#)

**45.** Biolistics (gene-gun) is suitable for

- A. DNA finger printing
- B. disarming pathogen vectors
- C. transformation of plant cells
- D. Constructing recombinant DNA by joining with vectors .

**Answer: C**



[Watch Video Solution](#)

**46.** Select the correct set of statements with respect to biodiversity .

a. Diversity increases from lower to higher latitude .

b. The most important cause of "The Evil Quarter " is habitat loss.

c. The IUCN Red list documents the extinction of 87 plants species .

d. Indigenous plants of aquatic habitat are eliminated by exotic species Clarias.

A. b & c

B. a & d

C. a & c

D. c & d

**Answer: A**



**Watch Video Solution**

**47. Match the following columns**

**Column I**

1. Photolysis of water
2. Diazotrophy
3. Cytochrome-C oxidase
- D.* biosynthesis of IAA

**Column II**

- i.* zinc
- ii.* Copper
- iii.* Manganese
- iv.* Molybdenum
- v.* Boron

A.    *A*   *B*   *C*   *D*  
      3    2    1    5

B.    *A*   *B*   *C*   *D*  
      3    4    2    1

C.    *A*   *B*   *C*   *D*  
      5    2    3    4

D.    *A*   *B*   *C*   *D*  
      4    1    3    2

**Answer: B**



**48.** Which of the following statements are false / true

(A) Calcitonin regulates the metabolism of calcium

(B) Oxytocin stimulates contraction of uterine muscles during birth

(C ) Grave's disease is caused by malfunctioning of adrenal gland

(D) ADH stimulates absorption of water and increase the urine productions



A. I and III are true , II and IV are false

B. I and II are true , III and IV are false

C. I and IV are false , II and IV are true

D. I, II and III are true , IV only false

**Answer: B**



**Watch Video Solution**

**49. DNA fingerprinting refers to**

A. Analysis of DNA samples using imprinting devices

B. Techniques uses for the amplification of different specimens of DNA

C. Techniques used for identification of fingerprinting of individuals

D. Molecular analysis of profiles of DNA samples

**Answer: D**



**Watch Video Solution**

**50.** Population growth curve in most animals ,  
except humans, is

A. S - shaped

B. J - shaped

C. J - shaped with tail

D. S - shaped with tail

**Answer: A**



**Watch Video Solution**

**51.** Which one of the following experiments suggests that simplest living organisms could not have originated spontaneously from non-living matter?

A. Larvae could appear in decaying organic matter

B. Microbes could appear in stored meat

C. Microbes appeared , from unsterilized organic matter

D. Meat was not spoiled , when heated and kept sealed in a vessel .

**Answer: D**



**Watch Video Solution**

**52. Fever in malaria is due to**

A. enter of cryptomerozoites into red blood corpuscles .

B. entry of sporozoites into blood capillaries.

C. enter of merozoites into red blood corpuscles.

D. release of merozoites from red blood corpuscles .

**Answer: D**



**Watch Video Solution**

**53.** Choose an option with the correct statements from the list below :

- i. The telomere is heterochromatic in nature.
- ii. The telocentric chromosome has centromere close to its end.
- iii. Satellite is located near primary constriction.
- iv. Submetacentric chromosomes are L-shaped.

A. i & ii

B. ii & iii

C. iii & iv

D. i, ii & iv

**Answer: D**



**Watch Video Solution**

**54.** Castor is a .....seed .

A. Monocot and endospermic

B. Dicot and albuminous

C. Dicot and perispermic

D. Monocot and Albuminous



**Answer: B**



**Watch Video Solution**

**55.** In India, human population is heavily weighed towards the younger age groups as a result of

A. Short life span of individuals and low birth rate

B. Long life span of individuals and low birth rate

C. Short life span of individuals and high birth rate

D. Long life span of individuals and high birth rate

**Answer: C**



**Watch Video Solution**

**56.** A condition where an individual heterozygous for two pairs of linked genes (  $AaBb$  ) possesses the two dominant genes on

one homologous chromosomes pair and two recessive on the other it is said to be

- A. Cis - arrangement
- B. Trans - arrangement
- C. Partly cis partly trans
- D. More than one option is correct

**Answer: A**



**Watch Video Solution**

57. In which one of the following pollination is autogamous ?

A. Geitonogamy

B. Xenogamy

C. Anemophily

D. Cleistogamy

**Answer: D**



**Watch Video Solution**

**58. Mustard contains**

A. Alternate phyllotaxy and actinomorphic  
flower

B. Opposite phyllotaxy and zygomorphic  
flower

C. Whorled phyllotaxy and actinomorphic  
flower

D. Opposite phyllotaxy and actinomorphic  
flower

**Answer: A**



**Watch Video Solution**

**59.** When the pollens of one flower falls on the stigma of another flower of the same plant then genetically it is known as

- A. Dichogamy
- B. Herkogamy
- C. Geitonogamy
- D. Autogamy

**Answer: C**



**Watch Video Solution**

**60.** Match the column:

	Column-(A)		Column-(B)
(i)	Use & disuse Theory	(A)	Hugo-de-Vries
(ii)	Survival of the fittest	(B)	Lamarck
(iii)	Spark Discharge apparatus	(C)	Darwin
(iv)	Mutation	(D)	Stanley Miller

A. i - B ,ii - C, iii - A , iv - D

B. i - B , ii - C , iii - D, iv - A

C. i - C , ii - D , iii - A , iv - B

D. i - B , ii - D , iii - C , iv - A

**Answer: B**



**Watch Video Solution**

**61.** Which one of the following organs in the human body is most affected due to shortage of oxygen?

A. Lungs

B. Heart



C. Kidney

D. Brain

**Answer: D**



**Watch Video Solution**

**62.** In which of the following the pollen tube enters via chalaza ?

A. Ottelia

B. Casuarina

C. Cucurbita

D. Both ( A) and ( C)

**Answer: B**



**Watch Video Solution**

**63.** Which of the following statements is false regarding proteins ?

A. A Protein is heteropolymer and not a homopolymer

B. Collagen is the most abundant protein  
in the animal world

C. RUBISCO is the most abundant protein  
in the whole biosphere

D. The first amino acid in the polypeptide  
chain is called as C - terminal amino acid  
and the last. amino acid is called as N -  
terminal amino acid.

**Answer: D**



**Watch Video Solution**

**64.** In the developmental history of mammalian heart, it is observed that it passes through a two-chambered fish-like heart, three-chambered frog-like heart and finally four-chambered stage. To which hypothesis can this above cited statement be approximated

- A. Biogenetic law
- B. Hardy-Weinberg law
- C. Lamarck's principal

## D. Mendelian principles

**Answer: A**



**Watch Video Solution**

**65.** One of the example of the action of the autonomous nervous system is

A. Swallowing of food

B. Pupillary reflex

C. Peristalsis of the intestine

D. Knee-jerk response

**Answer: C**



**Watch Video Solution**

**66.** If you suspect major deficiency of antibodies in a person, to which of the following would you look for confirmatory evidence

A. Serum globulins

B. Fibrinogen in the plasma

C. Haemocytes

D. Serum albumins

**Answer: A**



**Watch Video Solution**

**67.** In vitro fertilization is a technique that involves the transfer of which one of the following into the fallopian tube ?

A. Embryo only , upto 8 cell stage

B. Embryo of 32 cell stage

C. Sperm and ovum

D. Either zygote or early embryo upto 8 cell  
stage

**Answer: D**



**Watch Video Solution**



**68.** Which of the following microorganisms is best suited as a cloning vector to introduce nematode specific genes in plants ?

A. Phage  $\lambda$

B. Retrovirus

C. E. Coil

D. *Agrobacterium tumefaciens*

**Answer: D**



**Watch Video Solution**

**69.** Select the correct statement .

- A. The contraction of internal intercostal muscles lifts up the ribs
- B. The RBCs transport oxygen only
- C. The thoracic cavity is anatomically an air tight chamber
- D. Healthy man can inspire approximately 5000 mL of air per minute

**Answer: C**

---



[Watch Video Solution](#)

**70.** Basal metabolic rate is under control of

A. Thyroxine

B. ADH

C. Aldosterone

D. Growth hormone

**Answer: A**



[Watch Video Solution](#)

71. Most active phagocytic white blood cells are

- A. Neutrophils and eosinophils
- B. Lymphocytes and macrophages
- C. Eosinophils and lymphocytes
- D. Neutrophils and monocytes

**Answer: D**



**Watch Video Solution**

**72.** Fertilization is internal in

A. Toads

B. Frogs

C. Dog fish

D. Cat fish

**Answer: C**



**Watch Video Solution**

**73.** The R.Q. for anaerobic respiration is

A. 1

B. 0

C. 0.9

D. Infinity

**Answer: D**



**Watch Video Solution**

**74.** In humans , deoxygenated blood flows from:

A. Left auricle to left ventricle during  
auricular systole

B. Right auricle to right ventricle during  
atrial systole

C. Right ventricle to aorta during  
ventricular systole

D. Pulmonary vein to left auricle during  
auricular systole

**Answer: B**



**Watch Video Solution**

**75.** Which one of the following is a most efficient device to eliminate particular matters from the industrial emissions?

A. Scrubbers

B. Pyrolysis

C. Incineration

D. Electrostatic precipitator

**Answer: D**



**Watch Video Solution**



76. Overlapping region between two ecosystems is called

- A. Biome
- B. Ecotone
- C. Niche
- D. Photic zone

**Answer: B**



**Watch Video Solution**

77. Water lost in guttation is

A. Pure water

B. Impure water

C. In the form of vapour from

D. Either ( pure water ) or (Impure water )

**Answer: B**



**Watch Video Solution**

78. Which statement is true for angiosperms ?

A. Microspore is the resultant of mitotic division.

B. Microspore is the 1<sup>st</sup> cell of gametophytic generation .

C. Microspore is the resultant of double fertilization.

D. Microspore is the first cell of endosperm

**Answer: B**



**Watch Video Solution**

**79.** Tricarpellary syncarpous gynoecium is found in flowers of

A. Liliaceae

B. Solanaceae

C. Fabaceae

D. Poaceae

**Answer: A**



**Watch Video Solution**

**80.** Effective filtration pressure in glomerulus is maintained due to

A. Powerful pumping action of the heart.

B. Secretion of adrenaline

C. afferent arteriole being slightly larger than efferent arteriole .

D. Vacuum develops in collecting duct and sucks the blood .

**Answer: C**



[Watch Video Solution](#)

**81.** Most gymnosperms are

- A. Xerophytic
- B. Hydrophytic
- C. Halophytic
- D. Epiphytic

**Answer: A**



[Watch Video Solution](#)

**82.** Which stage of Plasmodium is infective for Mosquito

A. Trophozoite

B. Gametocyte

C. Ookinete

D. Sporozoite

**Answer: B**



**Watch Video Solution**

**83.** Mitosis occurs in

A. Haploid individuals

B. Diploid individuals

C. Both haploid individuals and diploid individuals

D. In bacteria only

**Answer: C**



**Watch Video Solution**



**84.** Which of the following statements is correct about the working of steroid hormone?

- A. They enter into target cells and binds with the specific receptors and activates specific genes to form a protein .
- B. They bind to cell membrane receptors.
- C. They catalyze the formation of cAMP
- D. None of the above

**Answer: A**



Watch Video Solution

**85.** Most cancers are treated by combination of :-

(a) Surgery

(b) Radiotherapy

(c) Chemotherapy

A. i and ii

B. i and iii

C. ii and iii

D. i, ii and iii

**Answer: D**



**Watch Video Solution**

**86.** What is meant by the degeneracy of codons

A. One amino acid is coded by one code

B. One amino acid can be coded by more than one code

C. One code controls one code

D. One code can control more than one  
amino acid

**Answer: B**



**Watch Video Solution**

**87.** An organic substance that can withstand environmental extremes and cannot be degraded by any enzyme is

A. Cuticle

B. Sporopollenin

C. Lignin

D. Cellulose

**Answer: B**



**Watch Video Solution**

**88.** Several hormones like hCG, hPL, estrogen, progesterone are produced by

A. Ovary

B. Placenta

C. Fallopian tube

D. Pituitary

**Answer: B**



**Watch Video Solution**

**89.** One of the following is used in the baking of the bread

A. *Rhizopus stolonifer*

B. *Zygosaccharomyces octosporous*

C. *Saccharomyces cerevisiae*

D. *Saccharomyces ludwigii*

**Answer: C**



**Watch Video Solution**

**90.** A person is wearing spectacles with concave lenses for correcting vision. While not

using the glasses the image of a distant object in his case will be formed .

- A. One the blind spot.
- B. behind the retina.
- C. In front of the retina .
- D. On the yellow spot

**Answer: C**



**Watch Video Solution**