



## BIOLOGY

### BOOKS - NTA MOCK TESTS

#### NTA NEET SET 55

#### Biology

1. The portion of the embryonal axis above the level of attachment of scutellum is

A. Hypocotyl

B. Epicotyl

C. Radical

D. Coleorhiza

**Answer: B**



**Watch Video Solution**

2. The fruit juices available commercially are clearer than ones which are homemade . Which ingredient is added in commercially available fruit juices ?

A. Lipase and protease

B. Pectinase and hydrolase

C. Pectinase and protease

D. Hydrolase and protease

**Answer: C**



**Watch Video Solution**

**3. Consider the following disorders :**

Haemophilia, sickle cell anemia , cystic fibrosis,  
Thalassemia, phenylketonuria, polydactyly, klinefelter's  
syndrome, Turner's syndrome

How Many of the above disorders are Mendelian  
Autosomal disorders

A. One

B. Two

C. Five

D. Eight

**Answer: C**



**Watch Video Solution**

4. The condition in which there are more than two complete set of chromosome is called

A. Aneuploidy

B. Polypoid

C. Monoploidy

D. Haploidy

**Answer: A**



**Watch Video Solution**

**5. Select the incorrect statement .**

A. More than 900 restriction enzymes have been isolated from over 230 strains of bacteria .

B. In the year 1963 , the two enzymes responsible for restricting the growth of bacteriophage in *Escherichia coli* were isolated .

C. Some key tools recombinant DNA technology are restriction enzyme , polymerase enzyme , ligase ,

ligase , vectors and host root organisms.

D. EcoRI cut the DNA between bases A and T only

when the sequence GAATTC is present in the DNA .

**Answer: D**



[Watch Video Solution](#)

6. In a experiment , in pBR322 an alien DNA is introduced using sal I. The transformant will grow on

A. Ampicillin

B. Tetracycline

C. Both (a) and (b)

D. None of these

**Answer: A**



**Watch Video Solution**

7. A polysaccharide of cartilage is

A. Chondroitin sulphate

B. Chondritin

C. Ossein

D. Cartilagin

**Answer: A**



**Watch Video Solution**

8. Observe the picture given below and identify the disease-causing nematode that causes a great reduction in yield of tobacco plants



- A. *Ancylostoma duodenale*
- B. *Wuchereria bancrofti*
- C. *Meloidogyne incognita*



D. *Ascaris lumbricoides*

**Answer: C**



**Watch Video Solution**

**9.** Genetically altered bacterium used in the control of environment pollution is

A. *E. coli*

B. *Bacillus anthracis*

C. *Pseudomonas putida*

D. *Agrobacterium tumefaciens*

**Answer: C**



**Watch Video Solution**

**10.** What type of gametes will be formed by genotype RrYy ?

A. RY, Ry, rY, ry

B. RY, Ry, ry, ry

C. RY, Ry, Yy, ry

D. Rr, RR, Yy, YY

**Answer: A**



**Watch Video Solution**

11. If a cell A with OP 10 bars and TP 4 bars is connected to cells, B, C and D having OP and TP respectively 4 and 4, 10 and 5 and 7 and 3 bars, the flow of water will be

A. C to A ,B and D

B. B to A ,C and D

C. A to D ,B and C

D. A to B , C and D

**Answer: B**



**Watch Video Solution**

12. A decrease in intrapulmonary pressure to less than atmospheric pressure causes

- A. inspiration
- B. expiration
- C. emphysema
- D. infarction

**Answer: A**



**Watch Video Solution**

13. I. ER divide the intracellular space into two distinct compartments.

II. SER is a major site for the synthesis of lipids.

III. ER is also called the control center of the cell.

IV. The ER modified chemicals that are toxin to the cell.

V. The ER with ribosomes in their surface is called RER.

Which of the following statements is /are about the ER ?

A. None

B. All except III , IV

C. All except III

D. All

**Answer: C**



**Watch Video Solution**

14. Choose the incorrect statement regarding hemoglobin .

- A. It is red coloured pigment
- B. It contains iron
- C. It is present inside RBC
- D. It binds with oxygen irreversibly

**Answer: D**



**Watch Video Solution**

### 15. Match the columns :

|     | Column-I  |       | Column-II                           |
|-----|-----------|-------|-------------------------------------|
| (A) | Telophase | (i)   | Occurs after $G_2$ interphase       |
| (B) | Anaphase  | (ii)  | Checkpoint in the middle of mitosis |
| (C) | Metaphase | (iii) | Disjunction                         |
| (D) | Prophase  | (iv)  | Followed by cytokinesis             |

A. A – (i), B – (ii), C – (iii) , D – (iv)

B. A – (ii) , B – (iii), C – (iv) , D – (i)

C. A – ( iii) , B – (iii) , C – (iv) , D – (i)

D. A – (iv) , B – (iii), C – (ii) , D – (i)

**Answer: B**



**Watch Video Solution**

16. Forcible peristaltic movements of short duration occur in

A. intestine

B. heart

C. fallopian tube

D. Uterus

**Answer: A**



**Watch Video Solution**

17. Find the correct match.



- A. Amyloplast - store lipids
- B. Aleuroplast - store protein
- C. Pyrenoid - store protein
- D. Elaioplast - store petroleum

**Answer: B**



**Watch Video Solution**

**18. Pericardium is a**

- A. Double walled membranous bag
- B. Single walled membranous bag
- C. Double walled cartilaginous cavity

D. Double walled coelomic cavity

**Answer: A**



**Watch Video Solution**

**19.** Chlorophyceae are grass green due to the dominance of pigment

A. Chlorophyll a, c

B. Chlorophyll b, a

C. Chlorophyll d, c

D. Chlorophyll a, d

**Answer: B**



**Watch Video Solution**

**20.** Which of the following is correct regarding tricuspid valve

- A. It has three muscular flaps
- B. It guards the opening between right atrium and right ventricle
- C. It is an uni -directional valve.
- D. All of the above

**Answer: D**



[Watch Video Solution](#)

21. Migration of ..... towards the opposite poles is characteristic feature of anaphase during mitosis.

- A. Single chromatid chromosomes
- B. double chromatid chromosomes
- C. tetrad chromosomes
- D. dyad chromosomes

**Answer: A**



[Watch Video Solution](#)

22. High content of carboxyhemoglobin in blood is associated with

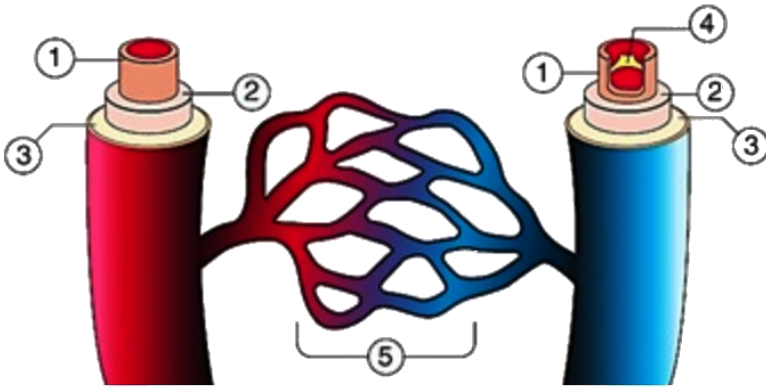
- A. Smoking
- B. Alcoholism
- C. Opiates
- D. Radiation therapy

**Answer: A**



**Watch Video Solution**

23. Select the option with the correct labeling



A. 1. epithelial tissue

2. Smooth muscle

3. Connective tissue

4. Valve

C. capillaries

B. 1. Smooth muscle

2. epithelial tissue

3. Connective tissue

4. Valve

5. capillaries

C. 1. Connective tissue

2. Smooth muscle

3. epithelial tissue

4. Valve

5. capillaries

D. 1. Smooth muscle

2. Connective tissue

3. epithelial tissue

4. Valve

5. capillaries

**Answer: A**



**Watch Video Solution**

**24.** The structures that remain separate with forming a layer is

A. Epithelial cells

B. Muscle cells

C. Nervous cells



D. Glands

**Answer: C**



**Watch Video Solution**

**25.** The statements are given below suits for,

- 1 . Possess a protective shell or exoskeleton
2. Small-sized
3. Ability to fly
4. produce large numbers of offsprings quickly .

A. birds

B. insects

C. mammals

D. reptiles

**Answer: B**



**Watch Video Solution**

**26.** Which of the following addictive habit could lead to danger of urinary bladder, throat and lungs cancer ?

A. Tar

B. Morphine

C. Heroin

D. LSD

**Answer: A**



**Watch Video Solution**

**27. Which of the statement is true regarding  $K_m$ ?**

- A. It is the measure of the stability of the ES complex
- B. It is the measure of the stability of the affinity of an enzyme for its substrate
- C. A high  $K_m$  indicates weak substrate binding
- D. All of these

**Answer: D**



**Watch Video Solution**

28. An individual molecular structure within an antigen to which an individual antibody binds is an :

A. hinge region

B. epitope

C. Fab region

D. FC region

**Answer: B**



**Watch Video Solution**

29. Which of the following is incorrect statement .

A. Vascular bundle of dicot Stem said to be open

B. In dicot stem endodermis is referred as starch sheath

C. Intrafascicular cambium is primary lateral meristem .

D. All tissue lying inside vascular cambium are called as bark.

**Answer: D**



**Watch Video Solution**

30. Apis, Bombyx , Culex and Limulus belongs to

A. the largest phylum of animalia

B. the smallest group of animalia

C. the second-largest animal phylum

D. the animals have an endoskeleton of calcareous  
ossicles

**Answer: A**



**Watch Video Solution**

31. I. Cell are living and thin-walled and their cell walls are made up to cellulose.

II. They store food material

III. The radial conduction of water in plants takes place by the help of these tissues.

Which of the above features belongs to xylem parenchyma ?

A. I and II

B. II and III

C. III and I

D. I, II and III

**Answer: D**



**Watch Video Solution**

32. Lichens are symbiotic associations of an algal and fungal component . Respectively, they are termed as

- A. algobiont and mycobiont .
- B. algobiont and fungibiont.
- C. Mycobiont and phycobiont.
- D. Phycobiont and mycobiont .

**Answer: D**



**Watch Video Solution**

33. Which of the following expanded forms of the following acronyms is correct ?



A. IPCC = International panel for climate

B. UNEP = United Nations Environmental policy

C. EPA = Environmental pollution Agency

D. IUCN = International Union Conservation of  
Natural and Natural Resources

**Answer: D**



**Watch Video Solution**

**34.** Identify the structure which represents homology in the following picture.



*Bougainvillea*



*Cucurbita*

A. Axillary buds

B. leaves

C. Stem

D. aerial roots

**Answer: A**



**Watch Video Solution**

35. In 'Rivet popper hypothesis', rivets of wings are considered as

- A. Dominant species
- B. Critical link species
- C. Rare species
- D. Keystone species

**Answer: D**



**Watch Video Solution**

36. The consequences of the industrial Revolution which took place in England was

- A. White colour moths were more in rural area
- B. Black coloured moths were more in urban area
- C. No variant was completely wiped out
- D. All of the above

**Answer: D**



**Watch Video Solution**

**37.** Currently , more than 15, 500 species worldwide are facing the threat of extinction. Out of these , what is the percentage of threatened mammalian species

- A. 12 %

B. 32 %

C. 31 %

D. 23 %

**Answer: D**



**Watch Video Solution**

**38.** Which of the following will inactivate the process of catalysis in the catalytic converters fitted in automobiles ?

A. Running very fast

B. Use of leaded petrol

C. Using BS IV fuel

D. Use of low sulphur fuel

**Answer: B**



**Watch Video Solution**

**39.** Choose the incorrect match .

A. Male. external genitalia : penis

B. Male accessory gland : seminal vesicle and prostate

C. Lubrication : bulbourethral gland

D. Scrotum : situated inside testis

**Answer: D**



**Watch Video Solution**

**40.** The organization created by FOAM is related to

- A. Integrated wastewater treatment
- B. Solid waste management
- C. Bhopal Gas tragedy
- D. Terror of Bengal .

**Answer: A**



**Watch Video Solution**

41. If birth rate = B , Death rate = D, Emigration = E, Immigration = I, then choose the correct match

|    | Column I                       |       | Column II       |
|----|--------------------------------|-------|-----------------|
| a. | Population is stable           | (i)   | $B + I > D + E$ |
| b. | Population is increasing       | (ii)  | $B + I = D + E$ |
| c. | Population is increasing       | (iii) | $B + I < D + E$ |
| d. | Population equation is invalid | (iv)  | $B + E > D + I$ |

- A. a(ii), b(i), c(iii), d(iv)
- B. a(ii), b(iv), c (iii), d(i)
- C. a(iii), b(iv), c (i), d (ii)
- D. a(i), b(ii), c (iv), d (iii)

**Answer: A**



**Watch Video Solution**



**42. Identify the correct statement.**

A. The testes are situated outside the abdominal cavity

B. The male germ cells undergo mitotic divisions

C. The interstitial space of seminiferous tubule contains Leydig cells which secrete testosterone

D. Testicular hormone are called androgens

**Answer: C**



**Watch Video Solution**

43. Which of the following is not a role of predation ?

A. Acts as 'conduits' of energy transfer across trophic levels.

B. Keep prey population under control

C. Helps in maintaining species diversity in a community .

D. It is a potent force of organic evolution .

**Answer: D**



**Watch Video Solution**

44. Humans semen is liquid at ejaculation but it soon coagulates and then undergo secondary liquefaction under the influence of .... Secretion released by .... gland.

- A. Fibrinogen, seminal vesicle
- B. Uterine milk, mucus
- C. Fibrinolysin , prostate gland
- D. Alkaline phosphatase , uterus

**Answer: C**



**Watch Video Solution**

45. The rate of decomposition is controlled by

A. Chemical composition of detritus

B. Climatic factor

C. both a)and b)

D. natural of detrivores

**Answer: C**



**Watch Video Solution**

**46. ICSI stands for**

A. Intracytoplasmic semen injection

B. Intracytoplasmic sperm injection

C. Interstitial cells stimulates inhibitors

D. Interstitial cell sperm injection

**Answer: B**



**Watch Video Solution**

47. The species that invade a bare area to start the process of succession is called

- A. Climax community
- B. Pioneer community
- C. Ecological species
- D. Standing crop

**Answer: B**



**Watch Video Solution**

**48.** Which of the following artificial techniques uses cryogenically preserved sperm?

A. Artificial insemination

B. GIFT

C. Vasectomy

D. Superovulation

**Answer: A**



**Watch Video Solution**

**49.** Select the incorrect statement from the following .

A. All animals depends on plants directly for their food needs

B. Death of the organism is the beginning of the detritus food chain/web

C. Those animals that depends on thee primary carnivores for food are labeled as secondary consumers

D. Primary producers an aquatic ecosystem are various species like phytoplanktons ,algae and

higher plants

**Answer: A**



**Watch Video Solution**

**50.** Which of the following is a pair of freshwater variety of fish ?

[Rohu, catla, Mackerel, pomfret ,Bombay duck)

- A. Rohu and catla
- B. Mackerel and catla
- C. Mackerel and pomfret
- D. Bombay Duck and pomfret



**Answer: A**



**Watch Video Solution**

51. Select the correct match based on the type of aestivation of corolla and their examples.

A. Valvate - cassia

B. Twisted - China rose, ladyfinger , Calotropis

C. Imbricate - cassia and Gulmohar

D. Vexillary - pea , Bean , Aloe Tulip

**Answer: C**



**Watch Video Solution**

52. Which of the following responses is taken up by some animals to avoid detection by predators ?

A. Mutation

B. anthropogenic action

C. industrial pollution

D. camouflage

**Answer: D**



**Watch Video Solution**

53. Genetic engineering has been successfully used for producing

A. Transgenic mice for testing safety of polio vaccine before use in humans

B. Transgenic models for studying new treatment for certain cardiac diseases

C. Transgenic cow - Rosie which produces high fat milk for making ghee

D. Animals like bulls for farm work as they have super power

**Answer: A**

---



C. C and D

D. A and D

**Answer: D**



**Watch Video Solution**

55. Which is false for vexillary or papilionaceous aestivation ?

A. Two smallest anterior petals are known as keel.

B. Two lateral petals are known as wing .

C. The largest standard petal is posterior.

D. The largest standard petal is anterior and overlaps wing

**Answer: D**



**Watch Video Solution**

**56.** How much volume of neural tissue in our body is contributed by neuroglia ?

A.  $< 25\%$

B.  $> 50\%$

C.  $> 75\%$

D.  $90\%$

**Answer: B**



**Watch Video Solution**

57. Select from the following the total number of plant having epipetalous stamens.

Gram, Arhar, Moong, Sesbania , Lupin , Mullathi, soyabean , Tomato , Brinjal , Belladonna, petunia, Tobacco, Tulip , Aloe, colchicine, Asparagus , chilli, Groundnuts, Indigofera , sunhemp

A. 7

B. 6

C. 8

D. 10

**Answer: B**



**Watch Video Solution**

**58.** Select the correct information about American cockroach (*Periplaneta americana*).

A. Head    Restricted mobility

B. Spiracles    12 pairs

C. Malpighian tubules    50-60 in number

D.

Anal styles    Sternum of 9<sup>th</sup> abdominal segment



**Answer: D**



**Watch Video Solution**

**59.** Which of the following pairs have different types of roots ?

A. Bean, Mustard

B. Wheat, mower

C. Maize , Mustard

D. grass, Monstera

**Answer: C**



**Watch Video Solution**

60. Which one of the following is correct pairing of a body part and the kind of muscle tissue that moves it

- A. Biceps of upper arm-Smooth muscle fibres
- B. Abdominal wall-Smooth muscle
- C. Iris-involuntary smooth muscle
- D. Heart wall-Involuntary instructed muscle

**Answer: C**



**Watch Video Solution**

61. Select the incorrect statement with respect to the prothallus of pteridophyta.

- A. It is gametophytic phase .
- B. It is multicellular and free-living .
- C. It is well differentiated with vascular tissue .
- D. It is small and undifferentiated.

**Answer: C**



**Watch Video Solution**

62. How many of the given statements are incorrect ?

- A. The sternum is the part of the axial skeleton.

B. 5 pairs of ribs are not true ribs.

C. Limbs are part of the appendicular skeleton.

D. pectoral girdle connects sternum to the femur .

A. None

B. One

C. Two

D. All

**Answer: A**



**Watch Video Solution**

63. Which of the following pairs of plants represents conifers ?

- A. Cycas and Ginkgo
- B. Pinus and Cedrus
- C. Pinus and Eucalyptus
- D. Cycas and wolffia

**Answer: B**



**Watch Video Solution**

64. The gap between the membranes of two neurons is termed as

A. Synaptic knob

B. Synaptic cleft

C. Cyton

D. Axon hillock

**Answer: B**



**Watch Video Solution**

**65.** Rules for Nomenclature are given by certain organizations and are universal . Which one is the following is not a rule for naming an organism ?

A. Biological names can be written in any language

B. The first word in a biological name represents the genus name, and the second is a specific epithet .

C. The names are writing in Latin and are italicized

D. When written by hand the names are to be underlined separately.

**Answer: A**



**Watch Video Solution**

**66.** During complete oxidation of glucose oxidative decarboxylation occurs in

A. Cytoplasm

B. Inner membrane of mitochondria

C. Matrix of mitochondria

D. Both (A) and (C)

**Answer: C**



**Watch Video Solution**

**67. Match the columns.**

Column A

Column B

1. Cochlea

A. Bipolar cells

2. Retina

B. Tectorial membrane

3. Forebrain

C. Corpus callosum

D. White matter

E. Hair cells

A. 1 – B, E, 2–A, D, 3 – C



B. 1 – B 2 – E, A, 3 – C, D

C. 1 – B E, 2– C, D, 3– A

D. 1 – B E, 2 – A , 3– C, D

**Answer: D**



**Watch Video Solution**

**68.** Which of the following statements about anaerobic respiration is incorrect ?

A. In animal cells, like muscles during exercise, when oxygen is inadequate for cellular respiration

pyruvic acid is reduced to lactic acid by lactate dehydrogenase .

B. The net gain of ATP is 2 molecules.

C. In this process , less than seven percent of the energy in glucose is released .

D. If the concentration of alcohol is seven percent, it becomes toxic to yeast .

**Answer: D**



**Watch Video Solution**

69. An endocrine gland, which secretes melatonin , is located at

- A. Dorsal side of forebrain
- B. Middle side of forebrain
- C. Dorsal side of midbrain
- D. Middle side of midbrain

**Answer: A**



**Watch Video Solution**

70. Which of the following statements is incorrect in relation to leghaemoglobin ?

- A. Leghaemoglobin functions as oxygen scavenger .
- B. It is synthesized by host cell.
- C. It makes nodules pink coloured .
- D. It oxidizes enzyme nitrogenase .

**Answer: D**



**Watch Video Solution**

**71. Select the incorrect match .**

- A. ANF - Atria of heart
- B. Erythropoietin - kidney
- C. Glucocorticoids - zone glomerulosa

D. Estrogen - placenta

**Answer: C**



**Watch Video Solution**

72. Loss of water in the form of liquid droplets around special openings of veins near the tip of grass blades is called

A. Exudation

B. Guttation

C. Transpiration

D. Imbibition

**Answer: B**



**Watch Video Solution**

**73.** Read the following statements ( A – E ) and answer the question that follows them:

A. Thyrocalcitonin is a hypocalcaemic hormone .

B. Isthmus in the thyroid is a thin flat of connective tissue .

C. The ovulation from the Graafian follicles is mediated by LH.

D. The source of FSH and TSH is the same.

E. Hormones are non-nutrient chemicals.

How many of the above statement are incorrect ?

A. None

B. One

C. Two

D. Three

**Answer: A**



**Watch Video Solution**

**74.** The correct sequence of flow of electrons in the light reaction is

A. PS II → Plastoquinone → Cytochromes → PS I  
→ Ferredoxin

B. PS

I → Plastoquinone → Cytochromes → PS II  
→ Ferredoxin

C. PS I → Ferredoxin → PS II → Cytochromes  
→ Plastoquinone

D. PS

I → Plastoquinone → Cytochromes → PS II  
→ Ferredoxin

**Answer: A**



**Watch Video Solution**



75. In photosynthesis, the light-independent reactions take place in

- A. Photosystem I
- B. Photosystem II
- C. Stroma
- D. Thylakoid lumen

**Answer: C**



**Watch Video Solution**

76. The cut flowers and vegetables are kept fresh for a long period by which of the following plant hormone ?

A. Auxin

B. Gibberellin

C. Cytokinin

D. Ethylene

**Answer: C**



**Watch Video Solution**

**77. Cell of maturation phase show**

A. Thickening of cell walls

B. Protoplasmic modification

C. Both (A) and (B)

D. None of these

**Answer: C**



**Watch Video Solution**

**78.** Which fungi are commonly used in biochemical and genetic work ?

A. Claviceps and puccinia

B. Neurospora and Saccharomyces

C. Aspergillus and Alternaria

D. Penicillium and Rhizopus

**Answer: B**



**Watch Video Solution**

**79.** Which of group includes diatoms and golden algae ?

A. Dinoflagellates

B. Chrysophytes

C. Euglenoids

D. Slime moulds

**Answer: B**



**Watch Video Solution**

**80.** Viruses are considered as a living organism because it

- A. reproduces inside the host cell.
- B. Can multiple outside the host cell.
- C. respond to touch stimuli.
- D. respire

**Answer: A**



**Watch Video Solution**

**81.** Which of the following is incorrect about methanogens ?

- A. They are archaeobacteria .
- B. They live in marshy area.
- C. Methane is their preferred carbon source .
- D. They persist in guts of several ruminant animals and they produce biogas from their dung.

**Answer: C**



**Watch Video Solution**

**82.** Replication in E.coli DNA starts in a definite region known as

- A. Promoter region

B. Origin of replication

C. Replication fork

D. Template strand

**Answer: B**



**Watch Video Solution**

**83.** Lactose is the substrate for the enzyme  $\beta$ -galactosidase and it regulates switching on and off of the operon. Hence it is termed as

A. Inducer

B. Repressor

C. Aporepressor

D. Co-repressor

**Answer: A**



**Watch Video Solution**

**84.** The enzyme that catalyses peptide bonding is located in :

A. In DHU loop of tRNA

B. Smaller subunit of ribosome

C. Large subunit of ribosome

D. On mRNA



**Answer: C**



**Watch Video Solution**

**85.** Which is the vital link that ensures continuity of species between organisms of one generation and the next?

- A. Zygote
- B. Gametes
- C. Meocytes
- D. Embryo

**Answer: A**



[Watch Video Solution](#)

86. The innermost wall layer of microsporangia which provides nutrition to the developing pollen grain is

- A. Epidermis
- B. Endothelium
- C. Middle layer
- D. Tapetum

**Answer: D**



[Watch Video Solution](#)

87. In which of the following condition, autogamy is prevented but not geitonogamy ?

- A. Self - incompatibility of pollen and stigma .
- B. Non-synchronization of pollen and anther release .
- C. Monoecious condition
- D. Dioecious condition

**Answer: C**



**Watch Video Solution**

88. Which of the following is incorrect ?

- A. Double fertilization is characteristics of angiosperm
- B. Double fertilization was discovered by Nawaschin
- C. Pollen tube shows apical growth and chemotropic movement
- D. Wind pollination is common in legumes

**Answer: D**



**Watch Video Solution**

**89.** Basal part of ovule which lies opposite to micropyle is

A. Hilum

B. Micropyle

C. Chalaza

D. Nucellus

**Answer: C**



**Watch Video Solution**

**90.** Identify the tissue that commonly performs the function of being supporting framework for epithelium.

A. Dense regular connective tissue

B. Dense irregular connective tissue

C. Areolar tissue

D. Adipose tissue

**Answer: C**



**Watch Video Solution**