



BIOLOGY

BOOKS - NTA MOCK TESTS

NTA NEET SET 67

Biology

1. Presence of bundle sheath is a characteristic of

A. Carbon-oxidation pathway

B. C2 pathway

C. C4 pathway

D. C3 pathway

Answer: C



Watch Video Solution

2. Which one of the following statement is wrong in case of Bhopal tragedy ?

A. Methyl Isocyanate gas leakage took place

B. Thousands of human beings died

C. Radioactive fall out engulfed Bhopal

D. It took place in the night of December 2/3 1984 .

Answer: C



Watch Video Solution

3. The diagram given below represents the sectional view of



A. Amphitropous ovule

B. Campylotropous ovule

C. Anatropous ovule

D. Orthotropous ovule

Answer: D



Watch Video Solution

4. The correct sequence of the arrangement of following parts in the mammary glands is

A. Mammary alveolus , mammary duct ,
ampulla and mammary lobe

B. Ampulla, mammary lobes , mammary
alveolus and mammary ducts

C. Mammary lobes , mammary ducts
mammary alveolus and ampulla

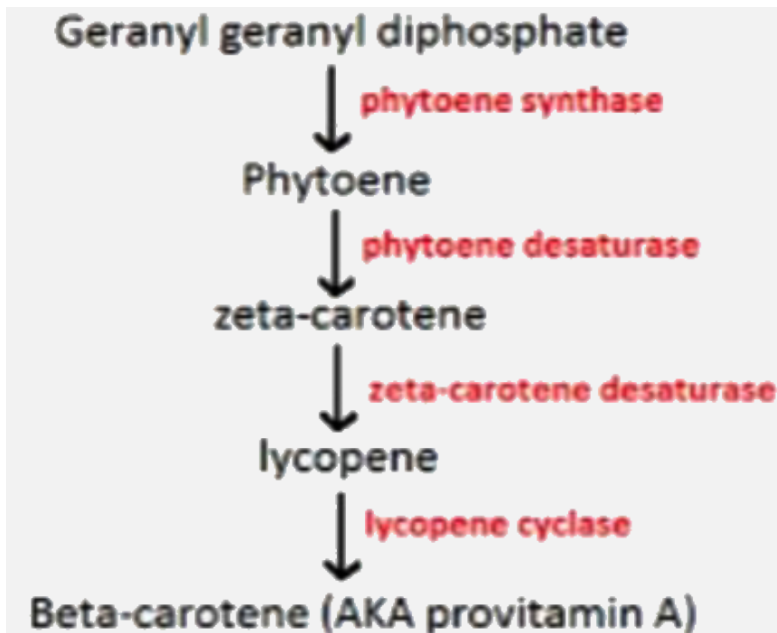
D. Ampulla , mammary duct , mammary
alveolus and mammary lobe

Answer: D



Watch Video Solution

5. The below pathway is observed in which of the following option?



A. 'Flaver Savr' tomato

B. Canolla

C. Golden rice

D. Bt - Brinjal

Answer: C



Watch Video Solution

6. Among the following, increase in body mass can be taken as criterion for growth

A. in living organisms

B. in non-living objects

C. both 1 and 2

D. none of the above

Answer: C



Watch Video Solution

7. Which of the following pairs of hormones are not antagonistic (having opposite effects) to each other ?

A. Parathormone - Calcitonin

B. Insulin - Glucagon

C. Aldosterone - Atrial Natriuretic Factor

D. Relaxin - Inibin

Answer: D



Watch Video Solution

8. Seedlings grown in darkness

A. They are of the same size as those
grown in light

B. They are much healthier than those grown in light

C. They are similar to those grown in light

D. They are taller than those grown in light

Answer: D



Watch Video Solution

9. Match the column-I and column-II

	Column-I		Column-II
(i)	Auxin	(A)	Adenine derivatives
(ii)	Gibberellin	(B)	Carotenoid derivatives
(iii)	Cytokinin	(C)	Terpenes
(iv)	ABA	(D)	Indole compounds

A. i- B ,ii- A, iii- D ,iv-C

B. i-D , ii- B ,iii- A ,iv- C

C. i- B , ii- A, iii- C , iv- D

D. i- D , ii-C, iii-A, iv- B

Answer: D



Watch Video Solution

10. Which one of the following metallic ion does not occur as prosthetic group in any enzyme

A. Mg

B. Cu

C. Zn

D. Ag

Answer: D



Watch Video Solution

11. When breast feeding is replaced by less nutritive food low in proteins and calories, the infants below the age of one year are likely to suffer from

A. Marasmus

B. Rickets

C. Kwashiorkor

D. Pellagra

Answer: A



Watch Video Solution

12. A leaf peeling of *Tradescantia* is kept in a medium having 10% NaCl. After a few minutes, if we observe the leaf peel under microscope, we are likely to see

- A. Enter of water into the cell
- B. The cells bursting out
- C. Diffusion of NaCl into the cell
- D. Exit of water from the cell

Answer: D



Watch Video Solution

13. Malarial parasite can be best obtained from the patient

A. An hour before rise of temperature

B. When temperature rises with rigor when temperature rises with rigor

C. When temperature comes to normal

D. Five hours after the temperature reaches to normal

Answer: B



Watch Video Solution

14. Amniocentesis involves the analysis of

A. Amnion

B. Body fluid of amniotes

C. Amino acids of protein

D. Amniotic fluid

Answer: D



Watch Video Solution

15. Which one of the following is not a living fossil?

A. Peripatus

B. King crab

C. Sphenodon

D. Archaeopteryx

Answer: D



Watch Video Solution

16. Read the following matches regarding the placentation

(i) Argemone - Axile

(ii) China rose - Free central

(iii) Lemon - Axile

(iv) Mustard - Parietal

Which of these are correct ?

A. i and ii only

B. i and ii only

C. ii only

D. iv only

Answer: D



Watch Video Solution

17. Aerobic respiration is called

A. Fermentation

B. Chemosynthesis

C. Bio-oxidation

D. Photorespiration

Answer: C



Watch Video Solution

18. An enzyme that can stimulate germination of barley seeds is

A. Lipase

B. Protease

C. Invertase

D. α -amylase

Answer: D



Watch Video Solution

19. The total number of vertebrae in man is

A. Cervical = 8 , Thoracic = 12 , Lumbar = 4 ,

sacrum = , (1)5 Coccyx = (1)4

Total No . Of bones 33

B. Cervical = 6 , Thoracic = 12 , Lumbar = 5,

sacrum =(1)4 , Coccyx = (1)4

Total No . Of bones 31

C. Cervical = 6, Thoracic =12 , Lumbar = 5,

sacrum = (1)4 Coccyx = (1)4

Total No . Of bones 32

D. Cervical = 7 , Thoracic =12 , Lumbar = 5,

Sacrum =(1)5 , Coccyx = (1)4

Total No . of bones 33

Answer: D



Watch Video Solution

20. Relative Biological Effectiveness (RBE)

usually refers to damage caused by

A. Low temperature

B. High temperature

C. Encephalitis

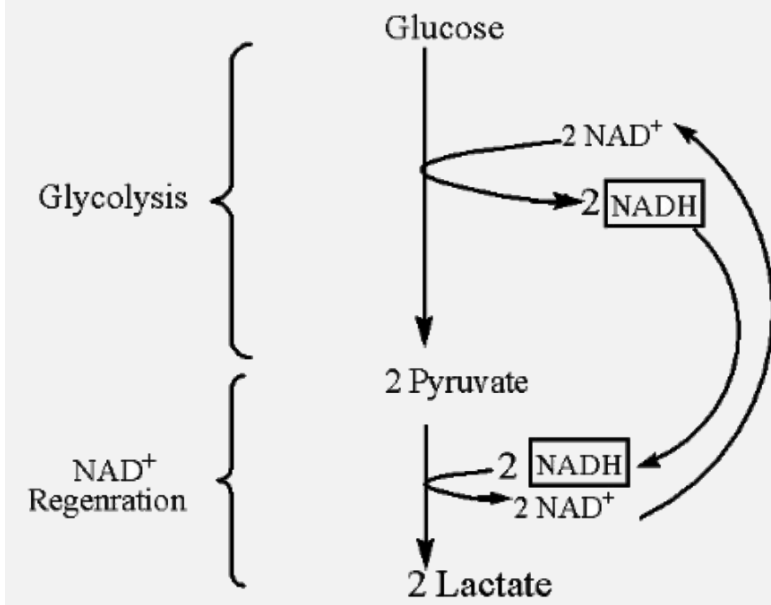
D. Radiation

Answer: D



Watch Video Solution

21. What is the total gain of energy during this process ?



- A. One molecule of ATP
- B. Two molecule of ATP
- C. Four molecule of ATP
- D. Eight molecule of ATP

Answer: B



Watch Video Solution

22. The first human hormone produced by recombinant DNA technology is

- A. Insulin
- B. Estrogen
- C. Thyroxin
- D. progesterone

Answer: A



Watch Video Solution

23. If all nitrogenase enzyme are inactivated ,
than there will be no

A. Fixation of in legumes

B. Fixation of atmospheric nitrogen

C. Conversion from nitrate to nitrite in
legumes

D. Conversion from ammonium to nitrite in
soil

Answer: A



Watch Video Solution

24. In negative operon

- A. Co-repressor binds with repressor
- B. Co-repressor does not bind with repressor
- C. Co-repressor binds with inducer
- D. cAMP has negative effect on lac operon

Answer: A



Watch Video Solution

25. Which one of the following vertebrae organs receives the oxygenated blood only ?

A. Gill

B. Lung

C. Liver

D. Spleen

Answer: D



Watch Video Solution

26. Wine turns sour because of :-

A. Heat

B. Aerobic bacteria

C. Anaerobic bacteria

D. Exposure to light

Answer: D



Watch Video Solution

27. Select the statements regarding "Good soil"

a. The maximum amount of water soil can hold and it is called field capacity.

b. The loamy soil has high field capacity and it has more amount of hygroscopic water.

c. Gravitational water is runaway water.

d. capillary water is present inside the microspores of soil and is the water that is available to plant roots.

A. a and b

B. a and d

C. b and c

D. c and d

Answer: B



Watch Video Solution

28. Jurassic period of the Mesozoic era is characterised by

A. Gymnosperms are dominant plants and first bird appear

B. Radiation of reptiles and origin of mammals like reptiles

C. Dinosaurs become extinct and angiosperms appear

D. Flowering plants and first dinosaurs appear

Answer: A



Watch Video Solution

29. Reason of diversity in living being is due to

A. Mutation

B. Long term evolutionary change

C. Gradual Change

D. Short term evolutionary change

Answer: B



Watch Video Solution

30. Reindeer moss is

A. Sphagnum

B. Marchantia

C. Cladonia

D. None of these

Answer: C



Watch Video Solution

31. If for some reason, the vasa efferentia in the human reproductive system get blocked, the gametes will not be transported from

A. Epididymis to vasa deferens

B. Ovary to uterus

C. Vagina to uterus

D. Testes to epididymis

Answer: D



Watch Video Solution

32. Read the following statement (I,ii, iii and iv)and select the right shoes with respect to coconut.

i. The fruit the is developed from inferior ovary

ii The middle fleshy mesocarp is edible .

iii The fruit is is known as a drupe.

iv Endocarp is stony .

A. i,ii & iii are correct

B. Only iii is correct

C. iii & iv are correct

D. i & ii are correct

Answer: C



Watch Video Solution

33. In Dryopteris, meiosis occurs at the of

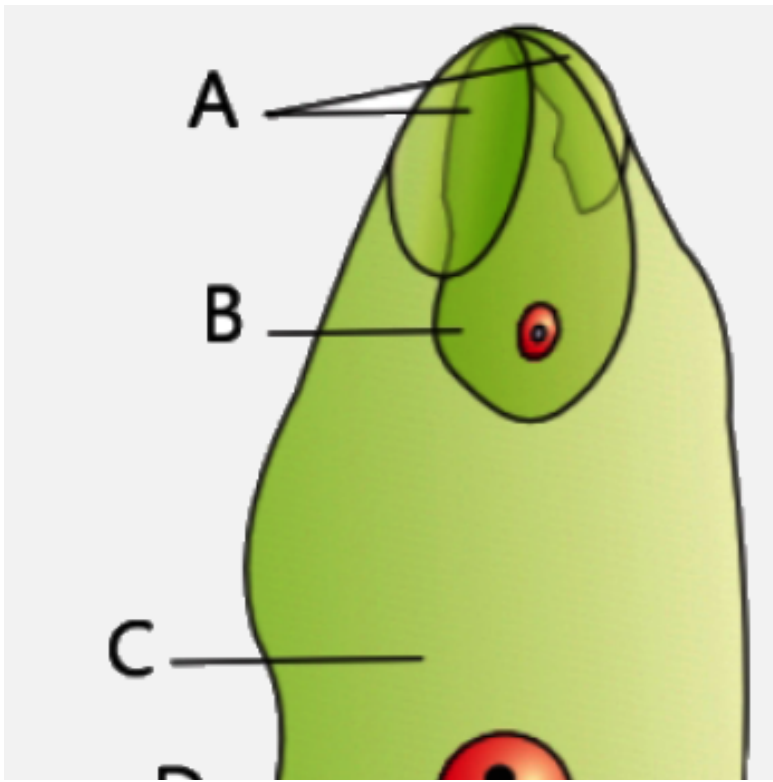
- A. Gamete formation
- B. Spore formation
- C. Formation of prothallus
- D. Formation of sex organs

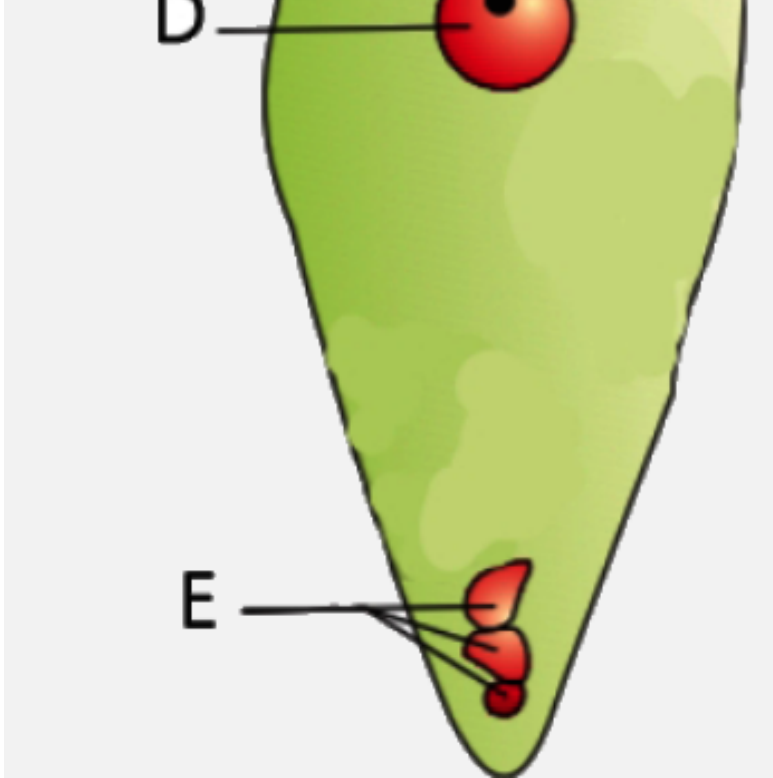
Answer: B



Watch Video Solution

34. Based on the diagram given below what is the ploidy of the structure labeled D?





A. n

B. $2n$

C. $3n$

D. $4n$

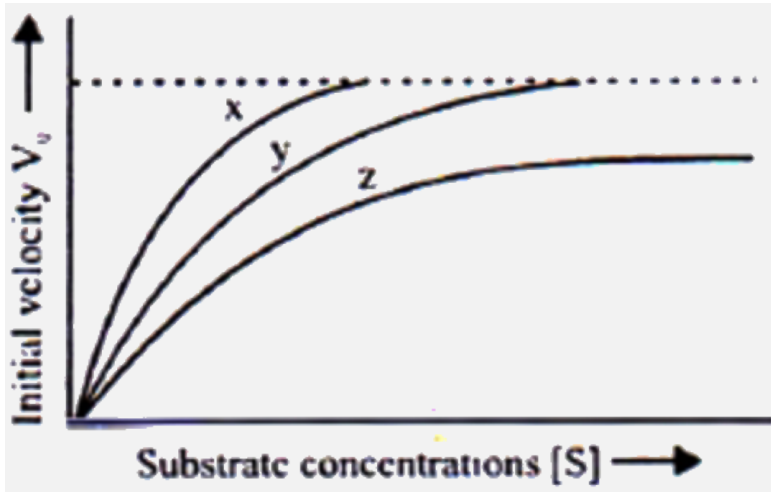
Answer: C



Watch Video Solution

35. The Given figure shows three velocity-substrate concentration curves of an enzyme reaction. What do the curves X Y and Z depict

respectively ?



A. x - Normal enzyme reaction, y - competitive inhibition, z - Non-competitive inhibition

B. x - Enzyme with an allosteric modulator added, y - Normal enzyme, z -

Competitive inhibition

C. x - Enzyme with an allosteric stimulator ,

y- Competitive inhibition added , z-

Normal enzyme reaction

D. x - Normal enzyme reaction , y - Non-

competitive inhibitor added , z -

Allosteric inhibition added

Answer: A



Watch Video Solution

36. Eli Lilly an American company is famous for

A. Producing vitamin ' A ' enriched rice

B. Producing pest resistant plants by RNA interference

C. Producing transgenic Soybean for herbicide resistance

D. Preparing two DNA sequence corresponding to A and B chains of

human insulin and introduced them in the plasmids of E.coli to produce insulin

Answer: D



Watch Video Solution

37. Which of the following sequence represent a possible pathway in the production of a secretory protein ?

A. Rough ER → Secretory vesicle →

Ribosomes → Golgi apparatus

B. Ribosomes → Rough ER → Golgi

apparatus → Secretory vesicle

C. Secretory vesicle → Golgi apparatus

→ Ribosomes → Rough ER

D. Rough ER → Ribosomes → Secretory

vesicle → Golgi apparatus

Answer: B



Watch Video Solution

38. Which of the following is an aquatic fern and an excellent bio- Fertilizer ?

A. Azolla

B. Salvinia

C. Marsilia

D. Pteridium

Answer: A



Watch Video Solution

39. Choose the incorrect statement about Ascomycetes.

A. Mycelium is branched and septate

B. Sexual spores are produced endogenously

C. They have sac like structure in which karyogamy takes place

D. Reduction division occurs in fruiting bodies and forms conidia

Answer: D



Watch Video Solution

40. If by radiation all the nitrogenase enzymes are inactivated, then which of the following will not occur?

(i) Fixation of atmospheric NO_2

(ii) Conversion from nitrate to nitrite in legumes

(iii) Fixation of nitrogen in legumes

(iv) Conversion from ammonium to nitrate in soil

A. (ii) and (iii)

B. (i) and (iii)

C. (ii) and (iv)

D. (iii) only

Answer: D



Watch Video Solution

41. Choose the mismatched pair from the following .

A. IgG - The most abundant type of serum

B. IgG - Major antibody in secretions such as saliva , tears and breast milk

C. IgD - plays an important role in protecting against pathogens that invade through the gut or respiratory mucosa

D. IgE - Least abundant and latest isotope

Which plays an important role in hypersensitivity

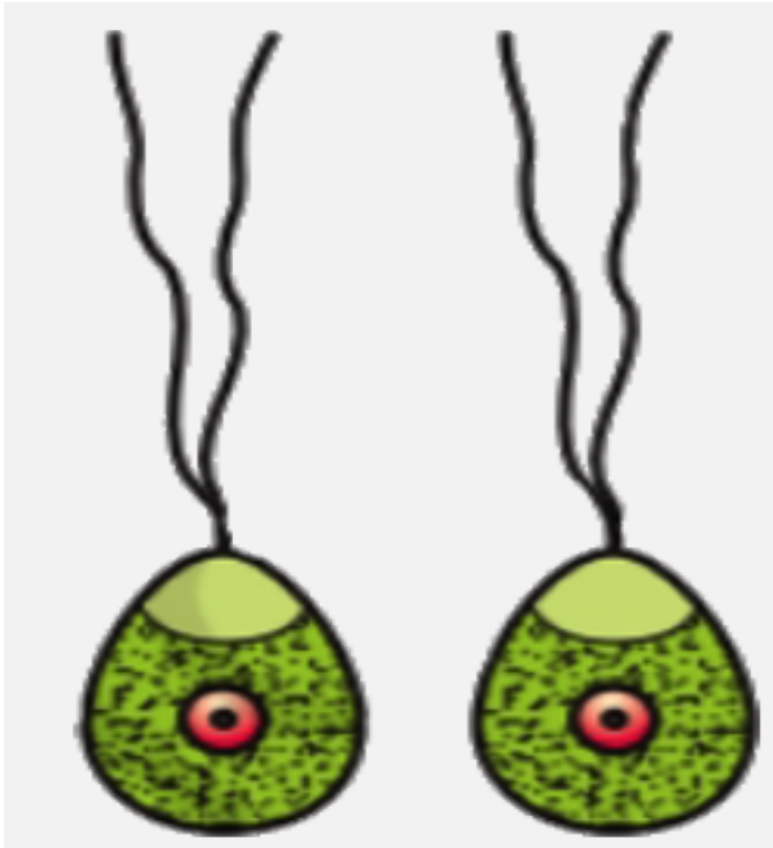
Answer: C



Watch Video Solution

42. Given below is a diagram of gametes produced by a particular organism. Identify

the organism .



A. Fucus

B. Marchantia

C. Cladophora

D. Chlamydomonas

Answer: C



Watch Video Solution

43. Ribosomes are particles about 200\AA units in diameter consisting of protein and RNA . The percentage of Protein and RNA in eukaryotes is

A. 80% and 20%

B. 60 % and 40 %

C. 50 % and 50 %

D. 40 % and 60 %

Answer: D



Watch Video Solution

44. Choose the incorrect statement about cockroaches from the following.

A. Antennae have sensory receptors that help in monitoring the environment.

B. The head is formed by the fusion of six segments and show great mobility in all directions due to flexible neck .

C. The first pair of wings arise from the mesothorax and the second pair from the metathorax.

D. In males , the genital pouch or chamber lies at the hind end of abdomen

bounded ventrally by 9th and 10th terga
and dorsally by the 9th sternum.

Answer: D



Watch Video Solution

45. The photosensitive Compound in the human eye is made up of :

A. Guanosine and Retinol

B. Opsin and Retinal

C. Opsin and Retinol

D. Transducin and Retinene

Answer: B



Watch Video Solution

46. which of the following statements regarding enzyme inhibition is correct ?

A. Non-competitive inhibition of an enzyme can be overcome by adding large

amount of substrate

B. Competitive inhibition is seen when a substrate competes with an enzyme for binding to an inhibition protein

C. Competitive inhibition is seen when the substrate and the inhibitor compete with

D. Non- competitive inhibitions often bind to the enzyme irreversibly

Answer: C



Watch Video Solution

47. In a given DNA segment ATACC AGG ACC CCA ACA the first base gets mutated. The affect of this on coding by this DNA segment will result in

- A. Complete change in the type as well as sequence of amino acid
- B. Change the first amino acid only
- C. No change in the sequence

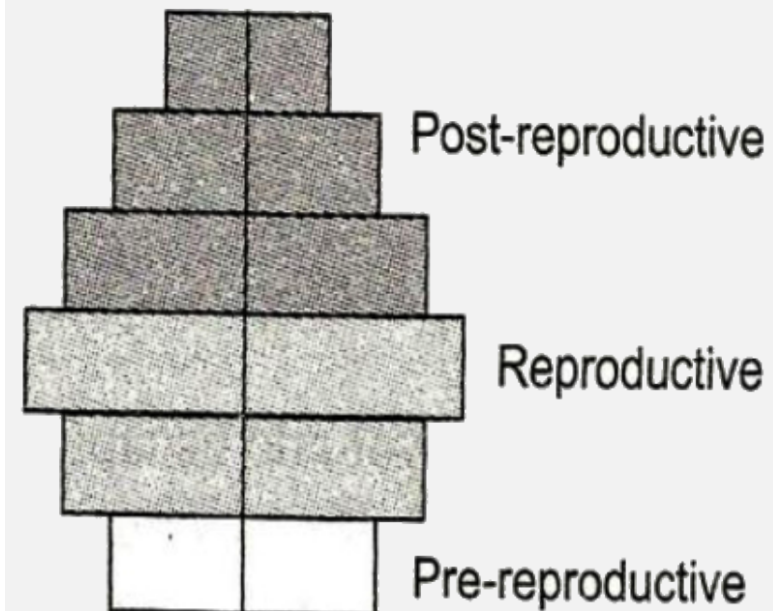
D. One amino acid less in the protein

Answer: B



Watch Video Solution

48. What type of human population is represented by the following age pyramid ?



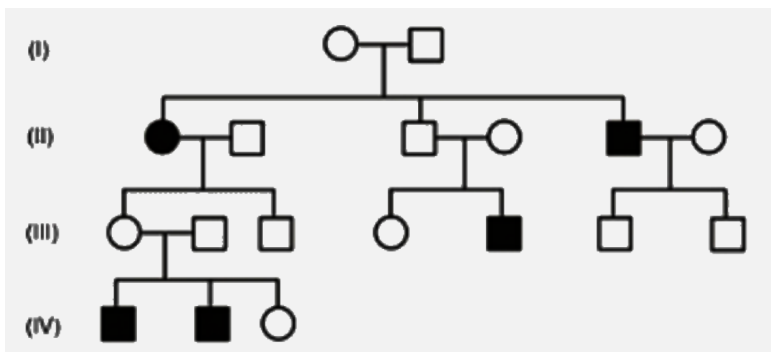
- A. Stable population
- B. Declining population
- C. Expanding population
- D. Vanishing population

Answer: B



Watch Video Solution

49. In the following humans pedigree , the filled symbols represents the affected individuals . Identify the type of given pedigree .



A. X - linked recessive

B. Autosomal recessive

C. X - linked dominant

D. Autosomal dominant

Answer: B



Watch Video Solution

50. The vascular cambium is generally more active on the A and product more.... B.....

What is A and B respectively ?

A. A - out side

B - secondary xylem

B. A - Inner side

B - secondary xylem

C. A - Inner side

B - secondary phloem

D. A - outer side

B - secondary phloem

Answer: B



Watch Video Solution

51. The extinct subspecies of zebra , Quagga, was originally found in

A. Russia

B. South Africa

C. Mauritius

D. India

Answer: B



Watch Video Solution

52. What happens during vascularisation in plants ?

A. Differentiation of procambium is immediately followed by the development of secondary xylem and phloem

B. Differentiation of procambium followed by the development of xylem and phloem

C. Differentiation of procambium , xylem and phloem is simultaneous

D. Differentiation of procambium followed by the development of primary phloem and then by primary xylem

Answer: B



Watch Video Solution

53. Read the following statement .

a) High H^+ concentration and higher temperature are favourable for dissociation of oxygen from oxyhaemoglobin.

b) Partial pressure of oxygen in alveoli is higher than in tissue .

c) The maximum volume of air a person can breathe in after a forced expiration is vital capacity.

d) In alveoli PCO_2 low and PO_2 high are for dissociation of CO_2 from carbamino

haemoglobin .

How many of the above statement are true ?

A. One

B. Two

C. Three

D. Four

Answer: D



Watch Video Solution

54. The correct sequence of plants in a hydrosere is

A. Oak → Lantana → Scirpus → Pistia

→ Hydrilla → Volvox

B. Volvox → Hydrilla → Pistia →

Scirpus → Lantana → Oak

C. Pistia → Volvox → Scirpus →

Hydrilla → Oak → Lantana

D. Oak → Lantana → Volvox →

Hydrilla → Pistia → Scirpus

Answer: B



Watch Video Solution

55. Out of the following , which , is an example of convergent evolution ?

- (i) Eyes of octopus and mammals
- (ii) Flipper of penguins and Dolphins
- (iii) Sweet potato and potato

A. i and iii

B. i and ii

C. ii and iii

D. i ,ii and iii

Answer: D



Watch Video Solution

56. The synthesis of replisome takes place during which stage of the cell cycle ?

A. G_1 phase

B. G_2 phase

C. S - phase

D. Interphase II

Answer: A



Watch Video Solution

57. Parasympathetic nervous system increases the activity of

A. Gut , iris and urinary bladder

B. Heat , adrenal and sweat gland

C. Heart , pancreas and lachrymal gland

D. Lachrymal gland and sweat gland

Answer: A



Watch Video Solution

58. Which of the following represents the floral characters of Liliaceae

A. Six tepals , zygomorphic , six stamens,
bilocular ovary, axile placentation

B. Tetramerous , actinomorphic
polyphyllous , unilocular ovary , axile
placentation

C. Tetramerous , actinomorphic
polyphyllous , superior , axile
placentation

D. Bisexual , zygomorphic , , gamophyllous,
inferior ovary , axile , placentation

Answer: C



Watch Video Solution

59. which of the following is a part of the pectoral girdle ?

A. Glenoid cavity

B. Sternum

C. Sternum Ilium

D. Acetabulum

Answer: A



Watch Video Solution

60. Which of the following is a chronic respiratory in which alveolar walls are damaged due to which respiratory surface is decreased ?

A. Asthma

B. Emphysema

C. Silicosis

D. Pneumonia

Answer: B



Watch Video Solution

61. Gene controls

A. heredity but not protein synthesis

B. protein synthesis but not heredity.

C. both heredity and protein synthesis .

D. neither heredity nor protein synthesis

Answer: C



Watch Video Solution

62. During interphase, RNA and proteins are synthesized in

A. S phase

B. G_1 phase

C. G_2 phase

D. Both G_1 and G_2 phase

Answer: D



Watch Video Solution

63. CAM pathway operates in

- A. Drought escaping mesophytes
- B. Drought resisting xerophytes
- C. Drought enduring hydrophytes
- D. None of these

Answer: B



Watch Video Solution

64. Monerans with both carbon and nitrogen reducing enzymes are

A. All photosynthetic bacteria

B. Heterocystous BGA and some photosynthetic bacteria

C. Heterocystous BGA but no eubacteria

D. All photoautotrophic bacteria and some BGA

Answer: B



Watch Video Solution

65. Sickle cell anaemia is induced by :

A. Change of amino acid in α - chain of
haemoglobin

B. Change of amino acid in β - chain of
haemoglobin

C. Change of amino acid in both

α – and β - chain of haemoglobin

D. Change of amino acid in either

α – or β - chain of haemoglobin

Answer: B



Watch Video Solution

66. The white fibres are chemically formed of

A. Collagen

B. Elastin

C. Myosin

D. Reticulin

Answer: A



Watch Video Solution

67. The trophic level of *Cuscuta*, *Orobancha* and *Albugo* is

A. Decomposer

- B. Primary producer
- C. Primary consumer
- D. Secondary consumer

Answer: C



Watch Video Solution

68. Which of the following has maximum genetic diversity in India?

A. Rice

B. Maize

C. Mango

D. Groundnut

Answer: A



Watch Video Solution

69. In pteridophytes, phloem is without

A. sieve cells.

B. bast fibres

C. companion cells.

D. More than one option is correct

Answer: C



Watch Video Solution

70. Genetically active area of chromosome is called

A. Chromatin

B. Heterochromatin

C. Heptan

D. Cistron

Answer: A



Watch Video Solution

71. Device for self - pollination is :

A. Hetrostyly

B. Dicliny

C. Unisexuality

D. none of the above

Answer: D



Watch Video Solution

72. Given below are five statements (i-v) regarding contrivances to ensure cross-pollination in plants

(i) **Dichogamy** - Anthers and stigmas mature at different times in a bisexual flower.

(ii) **Dichogamy** - Flowers are unisexual.

(iii) Prepotency - Pollen grains of the same flower germinate more rapidly over the stigma than the pollen grains another flower.

(iv) Heterostyly - Two or three types of flowers with different heights of styles.

(v) Herkogamy - A mechanical device to prevent self - pollination

which of the above statement are correct ?

A. (i) and (ii)

B. (i), (ii) and (iii)

C. (iii) , (iv) and (v)

D. (iv) and (v)

Answer: D

 [Watch Video Solution](#)

73. Which one of the following classes is incorrectly matched with its two general characters ?

	Class	Characteristics
(i)	Amphibia	Urinary bladder present, fertilization external
(ii)	Chondrichthyes	Air bladder, operculum
(iii)	Cyclostomata	Closed circulation, 6-15 pairs of gill slits
(iv)	Reptiles	Cornified skin, direct development

A. (i)

B. (ii)

C. (iii)

D. (iv)

Answer: B



Watch Video Solution

74. A collection of all the alleles of all the genes of a crop plant is called

A. Germplasm collection

B. Protoplasm collection

C. Somaclonal collection

D. Herbarium

Answer: A



Watch Video Solution

75. In heterozygous condition , the individual expression of both the alleles in the phenotype is exemplified by

A. Colour blindness

B. AB blood group

C. Rh factor

D. A and B blood group

Answer: B



Watch Video Solution

76. Which one the following hormone stimulates the secretion of milk form the mother's breasts when the baby is sucking ?

A. Progesterone

B. Oxytocin

C. Prolactin

D. Relaxin

Answer: B



Watch Video Solution

77. Coconut water from a tender coconut is:

A. Free nuclear endosperm

B. Innermost layers of the seed coat

C. Degenerated nucellus

D. Immature embryo

Answer: A



Watch Video Solution

78. Obstacle to large scale transplantation of organs is

A. immunological rejection of foreign bodies by B - lymphocytes

B. immunological rejection of foreign bodies by T - lymphocytes

C. immunological rejection of foreign bodies by basophils

D. immunological rejection of foreign bodies by monocytes.

Answer: B



Watch Video Solution

79. The hormone released by the pineal gland of the human brain is concerned with :

A. Anger

B. Body temperature

C. Colouration of skin

D. Sleep

Answer: D



Watch Video Solution

80. A foreign DNA and plasmid cut by the same restriction endonuclease can be joined to form a recombinant plasmid using

A. EcoRI

B. Taq polymerase

C. Polymerase III

D. Ligase

Answer: D



Watch Video Solution

81. To which of the following, bundles of His passes stimulus for contraction ?

A. AV node

B. SA node

C. Purkinje fibre

D. Atrium

Answer: C



Watch Video Solution

82. Flower in angiosperms

A. Is a modified reproductive shoot

B. Posses different floral appendages at successive nodes

C. Have floral appendages which are modified leaves

D. More than one option is correct

Answer: D



Watch Video Solution

83. A molecule that can act as a genetic material must fulfill the traits given below, except

A. It should be able to express itself in the form of 'Mendelian characters'

B. It should be able to generate its replica

C. It should be stable structurally but not chemically

D. It should provide the scope for slow changes that are required for evolution

Answer: C



Watch Video Solution

84. Which of the following combinations of characters is true for slime moulds?

A. Parasitic , plasmodium with true , walls

spores dispersed by air currents

B. Saprophytic , plasmodium with walls ,

spores dispersed by water

C. Parasitic , plasmodium without walls ,
spores dispersed by water

D. Saprophytic , plasmodium without walls ,
spores dispersed by air currents

Answer: D



Watch Video Solution

85. Function of filiform apparatus is to

A. Recognize the suitable pollen at stigma

B. Stimulate division of generative cell

C. Producer nectar

D. Guide the entry of pollen tube

Answer: D



Watch Video Solution

86. Select correct statements related to the human female reproductive system

i. The wall of the uterus has three layers of tissue i.e., mesometrium,

ii. The endometrium is the inner glandular layers that lines the uterine cavity.

iii. Myometrium is the middle thick layer of smooth muscle which exhibits strong contraction during delivery of the baby.

iv. The endometrium undergoes cyclical changes during the menstrual cycle.

A. i and iv

B. ii and iv

C. ii, iii and iv

D. i,ii,iii and iv

Answer: C



Watch Video Solution

87. Which of the following statement is incorrect ?

A. Cosmid contains gene coding for viral protein

B. Cosmid replicates like plasmids

C. Cosmid has antibiotic resistant marker gene

D. Cos site has 12 bases helping to join complete genome to make it circular

Answer: A



Watch Video Solution

88. In the monocotyledon seeds , the endosperm is separated from the embryo by a distinct layer known as :

A. Testa

B. Aleurone

C. Tegmen

D. Hilum

Answer: B



Watch Video Solution

89. Pick out the correct statements:

(i) Colour blindness is a sex - linked recessive gene disorder

(ii) Klinefelter's syndrome is 18th chromosomal trisomy

(iii) Phenylketonuria is an autosomal dominant gene disorder

(iv) Down's syndrome is due to aneuploidy

A. i,ii, and iii are correct

B. i and ii are correct

C. ii, iii and iv are correct

D. i, ii and iv are correct

Answer: D



90. An advantage of excreting nitrogenous wastes in the form of uric acid is that

A. Uric acid can be excreted in almost solid form .

B. The formation of uric acid requires a least amount of energy

C. Uric acid is the first metabolic breakdown product of acids

D. Uric acid may be excreted through the
lungs

Answer: A



Watch Video Solution