



## BIOLOGY

### BOOKS - NTA MOCK TESTS

#### NTA NEET SET 70

#### Biology

1. Read the following statements about protists and state how many of them are true

- (I) Euglenoids have a Carbohydrate rich layer called pellicle.
- (II) Slime moulds are Saprophytic fungi .
- (III) Dinoflagellates are mostly found in fresh water and are

photosynthetic

(IV) spores of slime moulds are dispersed by water.

A. One

B. Two

C. Three

D. zero

**Answer: D**



**Watch Video Solution**

2. Mahesh (who is colourblind) and soni (who is not colourblind) have a daughter Alia. Rish ( who is not colourblind) and Neetu (who is a carrier ) have a son

Ranbeer . Alia and Ranbeer get married . What is the probability that their daughter will be colourblind ?

A. 0 %

B. 25 %

C. 50 %

D. 75 %

**Answer: B**



**Watch Video Solution**

**3.** All the statements about the members of the Liliaceae family are false except

- A. The length of filaments in all stamens is the same
- B. They have leaves without stipules but show parallel venation .
- C. They have trilobular superior ovary with three ovules
- D. They have fruits which are mostly berries and rarely capsule

**Answer: B**

 [Watch Video Solution](#)

4. Exine and pollen tubes of pollen grains of dicotyledonous plants are respectively made up of

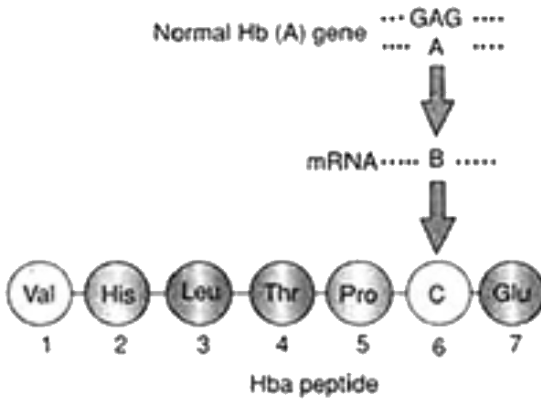
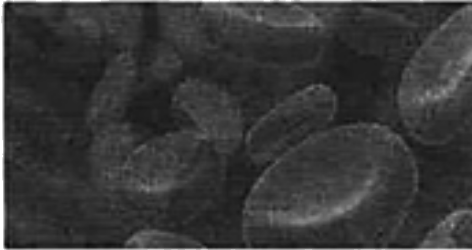
- A. Sporopollenin, glycerol
- B. Cellulose, pectinase
- C. Sporopollenin , cellulose
- D. Pectin , cellulose

**Answer: C**



**Watch Video Solution**

## 5. Identify A,B,C



A. A : CTC, B: GAG, C : Glu

B. A : GAG, B: CTC , C: Pro

C. A :CAC, B: GAG , C : Thr

D. A : CTC , B : GAG , C : Leu

**Answer: A**



**Watch Video Solution**

6. Match the items given in column I with those listed in column. II choose the answer with the correct combination of the alphabets of the two columns.

	Column-I		Column- II
(A)	Monohybrid cross	(1)	T and t
(B)	Test cross	(2)	TT
(C)	Alleles	(3)	Tt×Tt
(D)	Homozygous tall	(4)	tt
		(5)	Tt×tt

A.  $A \ B \ C \ D$   
3 5 4 2

B.  $A \ B \ C \ D$   
5 3 2 4

C.  $A \ B \ C \ D$   
3 5 1 2

D.  $A \ B \ C \ D$   
3 1 5 2

**Answer: C**



**Watch Video Solution**

7. In maize , a meiocyte has 20 chromosomes . What will be the number of chromosomes in its vegetative of pollen grain and nucellus cell of ovule respectively?

A. 20,40

B. 20,10

C. 10,20

D. 40,20

**Answer: C**



**Watch Video Solution**



8. Which of these statements about TCA cycle is false ?

A. There are three points in the cycle where  $NAD^+$  is reduced to  $NADH + H$  and one point where  $FAD +$  is reduced to  $FADH_2$

B. During the conversion of succinyl - CoA to succinic acid a molecule of GTP is synthesized.

C. It involves condensation of acetyl group with oxaloacetate acid (OAA) and water to yield citric acid

D. It involves two steps of decarboxylation, one leads to formation of alpha ketoglutaric acid while the other leads to the formation of succinic acid

**Answer: D**



**Watch Video Solution**

**9.** Which of these plants is correctly matched with its reproductive characteristics ?

(i) Sphagnum : Male sex organ called antheridium produce biflagellate antherozoids while the female sex organ called archesporium produces a single egg .

(ii) sequoia : One of the megaspores enclosed within the megasporangium develops into a multicellular female gametophyte that bears two or more archegonia or female sex organs

(iii) Wolffia : one of the male gametes fuses with the egg cell to form a zygote while the other male gamete fuses

with the diploid secondary nucleus to produce the triploid primary endosperm nucleus .

(iv) polysiphonia . Sexual reproduction is oogamous with non-motile gametes and accompanied by complex post-fertilization developments

A. i and ii

B. i , ii and iv

C. ii,iii and iv

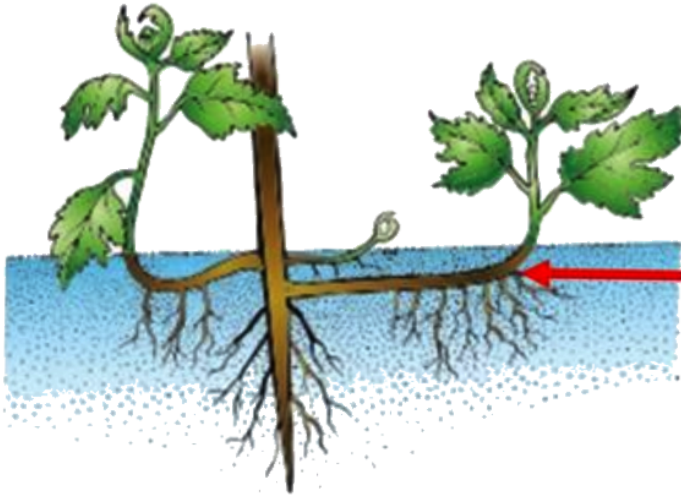
D. i ,ii, iii and iv

**Answer: D**



**Watch Video Solution**

10. Which of these plants have a modification of stem as indicated by the red arrow, in this diagram ?



- A. Pistia and Eicchornia
- B. Pineapple and Chrysanthemum
- C. Mint and jasmine
- D. Grass and Strawberry

**Answer: B**



[Watch Video Solution](#)

11. In Z - scheme , Z - shape is formed when

- A. carriers are placed uphill
- B. carriers are placed downhill
- C. carriers are placed in sequence on a redox potential scale
- D. carriers are placed in increasing order of energy

**Answer: C**



[Watch Video Solution](#)

12. How many of the following fungi belong to Ascomycetes ?

Ustilago, Aspergillus, Neurospora, Trichoderma, Albugo, Claviceps, Saccharomyces, Colletotrichum

A. Two

B. Four

C. Five

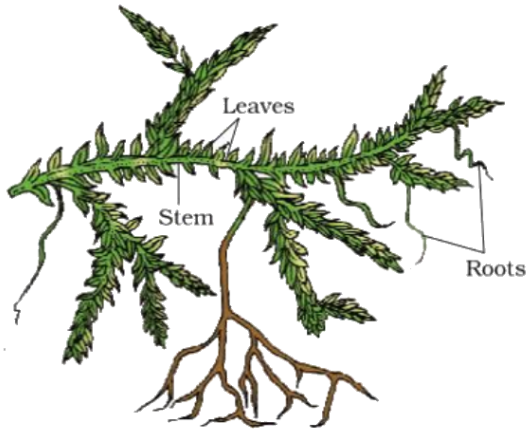
D. Three

**Answer: B**



**Watch Video Solution**

13. Which of the following statements about the Plant depicted in the following image is incorrect ?



- A. The plant produces two types of spore one large and the other small
- B. The development of the zygote into young embryo take place outside its female

C. It has strobilus or cone which are distinct compact structures from sporophylls

D. This plant is placed in the same class as Lycopodium

**Answer: B**

 [Watch Video Solution](#)

**14.** Rose has

A. Perigynous flowers with polycarpellary gynoecium

B. Perigynous flowers with polycarpellary apocarpous gynoecium



C. Epigynous flowers with polycarpellary syncarpous gynoecium

D. Epigynous flowers with polycarpellary apocarpous gynoecium

**Answer: B**



**Watch Video Solution**

15. The ratio of F<sub>2</sub> generation of a dihybrid cross having pure , monohybrids , dihybrids plants is

A. 1 : 2 : 1

B. 1 : 2 : 4

C. 1:4:8

D. 1:1:2

**Answer: A**



**Watch Video Solution**

**16.** Dicot stem has open vascular bundles . They are called 'open' because they

A. Are surrounding by pericycle but no endodermis

B. Are capable of producing secondary xylem and phloem

C. Possess conjunctive tissue between xylem and phloem

D. Are not surrounded by Pericycle

**Answer: B**

 [Watch Video Solution](#)

17. What will be the ratio of the number of male gametes produced from one microspore mother cell to number of female gametes produced from the megaspore mother cell in flowering plants ?

A. 4 : 1

B. 1 : 1

C. 8: 1

D. 16: 1

**Answer: C**

 [Watch Video Solution](#)

**18.** Observe the following disease screen the lime . It is caused by an organism which is



A. Spindle shaped , bi fungi flagellated ,and classified under kingdom Protista

B. Rod shaped , flagellated and classified under kingdom Protista

C. Rod shaped , flagellated and classified under kingdom Monera

D. Spindle non- flagellated ,and classified under kingdom

**Answer: C**



**Watch Video Solution**

**19.** A large white flower which blooms in the night having a scent of rotting fruit and producing a capious amount of nectar is most likely to be pollinated by

A. insects

B. birds

C. Snakes

D. bats

**Answer: D**



**Watch Video Solution**

20. Spraying of conifers with which hormone hastens the maturity period and thus leading to early seed production ?

A. The hormone which also causes bolting in some plants

B. The hormone which is activated during deficiency of water

C. The hormone which responsible for apical dominance

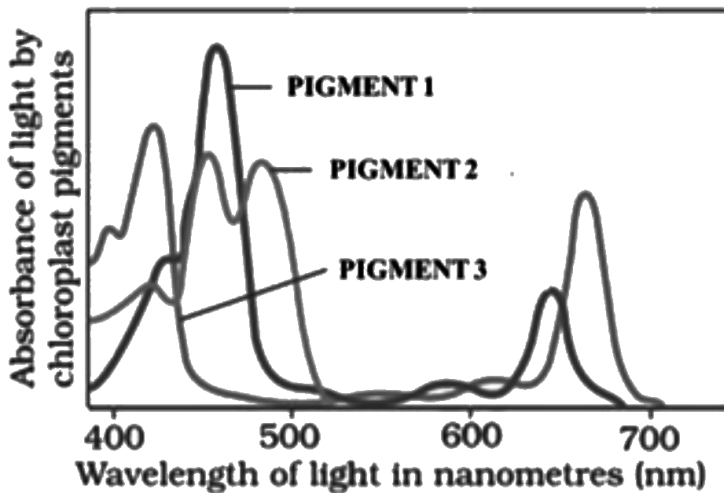
D. The hormone which prevents apical dominance is plants

**Answer: A**



Watch Video Solution

21. Observe the graphs given below and choose the options correctly describing the color of pigments 1,2,and 3 in a chromatogram .



A. Pigment 1: yellow green , pigment 2 : yellow orange  
and pigment 3 : blue green



B. Pigment 1: yellow - orange , pigment 2 : blue green  
and pigment 3 : yellow green

C. Pigment 1:blue green, Pigment 2 : yellow green and  
Pigment 3 : yellow - orange

D. Pigment 1: yellow green , pigment 2 : blue green and  
pigment 3 : yellow - orange

**Answer: A**

 [Watch Video Solution](#)

**22.** Following are the differences between monocot and dicot stem . Which ones are correct ?

	Phylloclade	Phyllode	Cladode
(i)	Opuntia	Asparagus	Acacia
(ii)	Xylem	Exarch	Endarch
(iii)	Pith	absent	Present
(iv)	Bundle sheath	Sclerenchymatous	Parenchymatous

A. i and ii

B. iii and iv

C. i and iii

D. ii and iv

**Answer: C**



**Watch Video Solution**

**23.** A couple has a child whose blood group is different from his mother as well as his father. The possible blood

group of the parents could be

A. A and AB

B. B and AB

C. AB and O

D. A and O

**Answer: C**



**Watch Video Solution**

**24.** In which of these options, the plants are correctly matched with the modification seen in them ?

A. (i)

B. (ii)

C. (iii)

D. (iv)

**Answer: A**



**Watch Video Solution**

**25.** Which of these statements is correct about the five kingdom given by Whittaker ?

A. Most of the kingdoms have organisms with a poorly defined nucleus .

B. Most of the kingdoms have organisms with a cell wall.

C. Most of the kingdoms have organisms with only one cell .

D. Most of the kingdoms have organisms with RNA as the genetic material

**Answer: B**



**Watch Video Solution**

**26.** The short repeating sequence of DNA useful in DNA fingerprinting are

A. VNTR

B. Codons

C. Introns

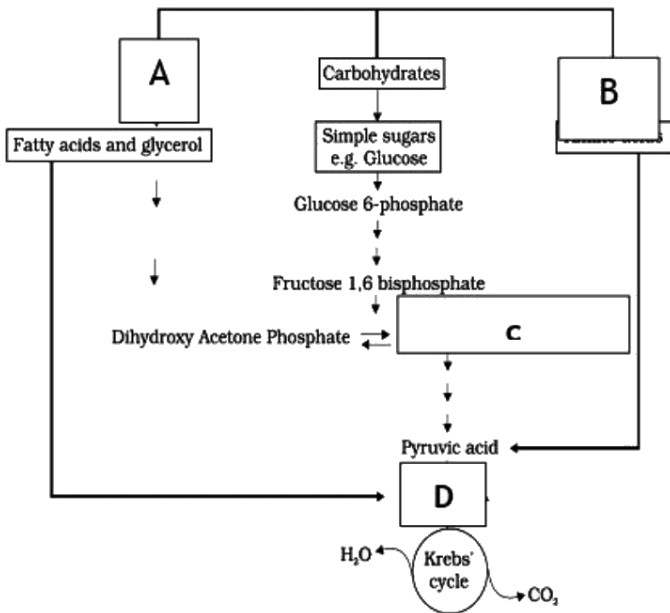
D. Exons

**Answer: A**



**Watch Video Solution**

27. Select the correct option for A, B, C & D



A. A - Fats ,B - Proteins , C - PEP ,D - Acetyl CoA

B. A - Proteins ,B - Fats ,C - 3 - PGAL ,D - Acetyl CoA

C. A - Fats , ,B -Proteins ,C - PGAL ,D - Acetyl CoA

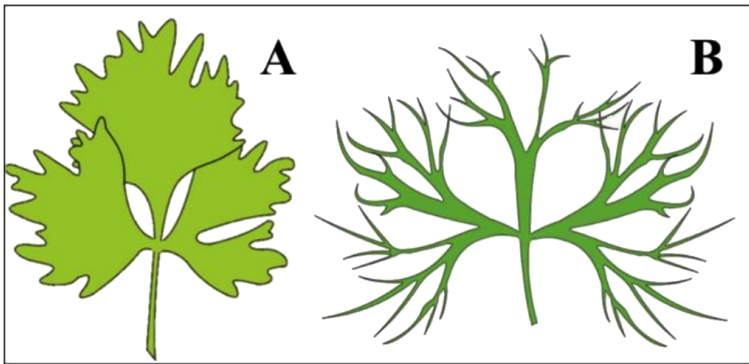
D. A - Proteins ,B -Fats ,C - PGAL,D - DHAP

**Answer: C**



Watch Video Solution

28. Observe the following image and choose the option which correctly describes A and B



A. A is the juvenile leaf while B is the mature leaf in larkspur

B. A is the mature leaf while B is the juvenile leaf in larkspur



C. A is the leaf in terrestrial habitat while B is the leaf in aquatic habitat in buttercup

D. A is the leaf in aquatic habitat while B is the leaf in terrestrial habitat in buttercup

**Answer: C**



**Watch Video Solution**

**29.** The quietest sound that the ear of a man can detect is known as

A. Acoustic zoning

B. Threshold of hearing

C. Threshold of pain

D. Green muffler

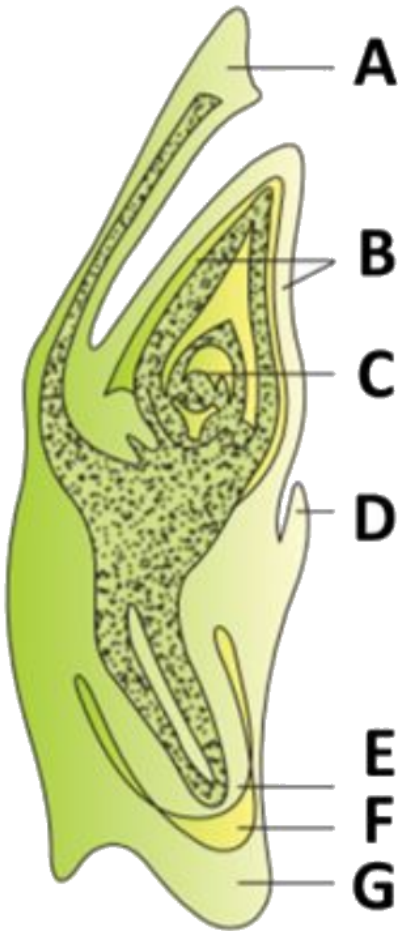
**Answer: B**



**Watch Video Solution**

**30.** Observe this diagram of L.S. of embryo of grass which of these labels represents the functional cotyledon and

# Rudimentary cotyledon ?



A. Functional cotyledon : A Rudimentary cotyledon : B

B. Functional cotyledon : A Rudimentary cotyledon : C

C. Functional cotyledon : G Rudimentary cotyledon : D

D. Functional cotyledon : A Rudimentary cotyledon : D

**Answer: D**

 [Watch Video Solution](#)

**31. Endemic species are**

- A. Rare species
- B. Species localised in a region
- C. Cosmopolitan in distribution
- D. Critically endangered species

**Answer: B**

 [Watch Video Solution](#)

32. Which of the following microbe is widely used in the removal of industrial wastes ?

- A. *Trichoderma* sp
- B. *Aspergillus niger*
- C. *Pseudomonas putida*
- D. All of these

**Answer: D**



**Watch Video Solution**

**33.** A patient has developed a clot in his heart. Which of these enzymes can be used to bust this clot ?

A. Amylase

B. Streptokinase

C. Pectinase

D. Protease

**Answer: B**



**Watch Video Solution**

**34.** The transforming principal in Griffith's experiment was established

A. When live S-strain of *S. Pneumoniae* was injected into mice .

B. When live R-strain of *S. Pneumoniae* was injected into mice .

C. When heat killed R-strain of *S. Pneumoniae* was injected into mice

D. When mixture of heat killed S-strain and live R - strain of *S. Pneumoniae* was injected into mice

**Answer: D**



**Watch Video Solution**

**35.** The Indian government has set up an organization that will make decisions regarding the validity of GM research and the safety of introducing GM organisms for public services, that organization is called

A. GAEC

B. GEAC

C. GCAE

D. GCEA

**Answer: B**



**Watch Video Solution**



**36.** Find the CORRECT match from the following .

A. Cry I Ab - Cotton bollworms

B. RNAi - *Meloidegryne incognita*

C. First transgenic cow- Dolly

D. Eli Lilly and company - Gene therapy

**Answer: B**



**Watch Video Solution**

**37.** Eutrophication occurs because of :

A. Calcium and Magnesium

B. Nitrogen and phosphorus

C. Carbon and oxygen

D. Mercury and DDT

**Answer: B**



**Watch Video Solution**

**38.** In human beings , the plasma membrane of the erythrocytes has approximately ....protein and ..... lipids

A. 40 percent , 52 percent

B. 52 percent , 40 percent

C. 80 percent , 20 percent

D. 20 percent , 80 percent

**Answer: B**

 [Watch Video Solution](#)

**39.** A bacteriophage  $\phi \times 174$  has

A. 3826 bp

B. 5386 bp

C. 5385 nucleotides

D. 3826 nucleotides

**Answer: C**

 [Watch Video Solution](#)

40. Identical A, B and C shown in this table :

Property	Simple Diffusion	Facilitated Transport	Active Transport
Requires special Membrane proteins	A	Yes	Yes
Highly selective	No	Yes	Yes
Transport Saturates	No	B	Yes
Uphill transport	No	No	C
Requires ATP energy	No	No	Yes

A. A - yes , B - yes , C - yes

B. A -yes B - No C - yes

C. A - No B - yes C -yes

D. A - No B - No C - yes

**Answer: C**

 [Watch Video Solution](#)

**41. Ureides have**

- A. high N/C ratio
- B. low N/C ratio
- C. high  $NH_2/C$  ratio
- D. low  $NH_2/C$  ratio

**Answer: A**

 [Watch Video Solution](#)

42. After poaching 3 lions in a certain forest of Gujarat , only 15 are left in a year . Determine in the death rate per capita .

A. 5.000

B. 0.200

C. 0.166

D. 0.800

**Answer: C**



[Watch Video Solution](#)

43. The genetic instructions for forming a polypeptide chain are carried to the ribosomes by the

A. tRNA

B. mRNA

C. rRNA

D. DNA

**Answer: B**



**Watch Video Solution**

**44.** In a DNA molecule , if the number of phosphodiester bonds is 198, it has ..... bases .

A. 150

B. 100

C. 300

D. 400

**Answer: B**



**Watch Video Solution**

**45. Which of the following pairs is not correctly matched**

A. Vitamin B3 -Pellagra

B. Vitamin B12 - Pernicious anemia

C. Vitamin C - scurvy

D. Vitamin B6 - Beriberi

**Answer: D**





46. Match the columns.

Column I	Column II
P Zygotene i	Chromosomes become gradually visible under the light microscope
Q Diakinesis ii	Bivalents clearly appear as tetrads
R Pachytene iii	Terminalisation of chiasmata
S Leptotene iv	Synapsis

A. P - iv , Q - iii , R - ii, S -i

B. P - i, Q - ii, R - iii, S -iv

C. P - ii, Q - iii , R - iv ,S -i

D. P - iv, Q - i , R - iii ,S -ii

**Answer: A**

 [Watch Video Solution](#)

47. .... concluded that the presence of cell wall is a unique character of plant cells .

A. T . Schwann

B. M. Schleiden

C. R. Virchow

D. R. Brown

**Answer: A**

 [Watch Video Solution](#)

48. All are in situ conservation efforts , except

- A. National parks
- B. Sanctuaries
- C. Herb gardens
- D. Biosphere reserves

**Answer: C**



**Watch Video Solution**

49. Identify the INCORRECT statement.

- A. In asexual reproduction , the offsprings produced are morphologically and genetically identical to the parent .
- B. Zoospores are sexual reproductive structures .
- C. In asexual reproduction , a single parent produces offsprings .
- D. Conidia are asexual structures in penicillium.

**Answer: B**

 [Watch Video Solution](#)

**50. Which of the following statements are CORRECT ?**

(a) Rum, Beer and Brandy are produced without

distillation.

(b) Roquefort cheese has large holes.

(c) some microbes can be observed at  $100^{\circ}C$

(d) Methanogen is an example of Methanobacterium belonging to groups of eubacteria .

A. a and b

B. only c

C. c and d

D. only d

**Answer: B**



**Watch Video Solution**

**51.** Protein synthesis in an animal cell occurs

A. Only on the ribosomes present in Castrol

B. Only on the ribosomes attached to the nuclear envelope and endoplasmic reticulum

C. On ribosomes present in the nucleolus as well as in cytoplasm

D. On ribosomes present in Cytoplasm as well as in mitochondria

**Answer: D**



**Watch Video Solution**

52. The principle of competitive exclusion was given by

A. Lindeman

B. Bates

C. Gause

D. Grinnel

**Answer: C**



**Watch Video Solution**

53. Hot spots are regions of high

A. Temperature

B. Endemism

C. critically endangered population

D. Exploitation

**Answer: B**



**Watch Video Solution**

**54.** Given below are some step for slicing foreign DNA into a plasmid and then inserting the plasmid into a bacterium.

(i) Transform bacteria with recombinant

(ii) Cut the plasmid DNA using restriction enzyme .

(iii) Extract plasmid DNA to - DNA fragments DNA

(iv) Bind the plasmid DNA to non-plasmid DNA fragments .

(v) Use ligase to seal plasmid DNA to non- plasmid DNA



Arrange the above steps in the right sequence and select the CORRECT option

- A. iv, v, ii, iii , iv
- B. iii , ii , iv ,v, i
- C. iii, iv , v, i, ii
- D. ii, iii, v, iv ,i

**Answer: B**

 [Watch Video Solution](#)

55. The order of Homo sapiens is

- A. Primata

B. diptera

C. hominidae

D. Poales

**Answer: A**



**Watch Video Solution**

**56.** Duplication of centrioles is observed during

A. S - Phase

B.  $G_2$  - Phase

C.  $G_1$ - Phase

D. both (B) and ( C )

**Answer: A**



**Watch Video Solution**

**57. MOET means**

- A. Multiple ovulation Embryo Transfer Technology
- B. Mature ovulation Embryo Transfer Technology
- C. Multiple ovulation Embryo Transplant Technology
- D. Multiple ovulation Energy Transfer Technology

**Answer: A**



**Watch Video Solution**

**58.** Chilled ethyl alcohol is used during DNA technology for

- A. Precipitation of histones
- B. Precipitation of DNA
- C. Removal of enzymes
- D. Precipitation of cell fragments .

**Answer: B**



**Watch Video Solution**

**59.** Individuals of one kind (species) occupying a particular geographic area at a given time form

- A. Community

B. Population

C. Species

D. Biome

**Answer: B**



**Watch Video Solution**

**60.** Each of the following statements concerning Fasciola is  
CORRECT , except

A. It has dorsoventrally flattened body

B. It has bilateral symmetry

C. Snails are intermediate host in its life cycle

D. It is diploblastic

**Answer: D**

 **Watch Video Solution**

**61.** Match the columns A with B and choose the CORRECT option from below .

Column A	Column B
(1) Skeletal Muscles	(P) Interrupts dark band
(2) Z line	(Q) Autonomic nervous system
(3) Henson zone	(R) Striated
(4) Visceral muscles	(S) Seen in light band

A. 1 - R , 2 - P , 3 - Q , 4 - S

B. 1 - R ,2 - Q, 3 - P, 4 - S

C. 1 - Q ,2 - P , 3 - S , 4 - R,

D. 1 - R ,2 - S , 3 - P, 4 - Q ,

**Answer: D**



**Watch Video Solution**

**62.** Which of the following will not cause hallucinations at high doses ?

A. Coke

B. Barbiturates

C. Datura extract

D. Extract of *Atropa belladonna*

**Answer: B**

 [Watch Video Solution](#)

**63.** Which of the following is a Co-factor for the proteolytic enzyme carboxypeptidase ?

A. Iron

B. Zinc

C. Copper

D. Manganese

**Answer: B**





[Watch Video Solution](#)

**64.** In which of the following pairs , is the ear represented by tympanum ?

- A. Fishes and amphibians
- B. Amphibians and reptiles
- C. Reptiles and birds
- D. Amphibians and mammals

**Answer: B**



[Watch Video Solution](#)

**65.** Which of the following cranial nerve controls the movement of tongue ?

- A. V cranial nerve
- B. X cranial nerve
- C. XII cranial nerve
- D. VIII cranial nerve

**Answer: C**



**Watch Video Solution**

**66.** In which of the following assisted reproductive technology , sperm is inserted into the egg with the help

of microscopic needle ?

A. GIFT

B. ZIFT

C. ICSI

D. IVF

**Answer: C**



**Watch Video Solution**

**67.** Cell junctions are present in :

A. Epithelial tissue

B. Smooth tissue

C. Cardiac tissue

D. All of these

**Answer: D**



**Watch Video Solution**

**68.** Through all persons are vulnerable to STDs, their incidences are reported to be very high among persons in the age group of

A. the age group of 24-30 years .

B. Person having sex with single partner .

C. Person using injectable drugs frequently .

D. More than one option is correct .

**Answer: C**

 [Watch Video Solution](#)

**69.** Which of the following is CORRECT about amino acid ?

- A. It is a compound containing amino ( $-NH_2$ ) and acidic group ( $-COOH$ )
- B. It is a substituted methane.
- C. Based on nature of 'R' group they are of many types
- D. All of these

**Answer: D**

 [Watch Video Solution](#)

70. In a population of 100 cats, 36 were white and 64 were black. If the black allele is dominant over white allele, what is the frequency of black allele in this population of cats?

A. 0.64

B. 0.4

C. 0.6

D. 0.48

**Answer: B**



**Watch Video Solution**

71. Find the INCORRECT match between the disease listed and its mode of transmission .

A. Typhoid : feco-oral route

B. Pneumoniae : droplet infection

C. Malaria : female Anopheles

D. Elephantiasis : sharing towels , cloths , comb of infected individual

**Answer: D**



**Watch Video Solution**

72. Which of the following type of joint does not allow any movement ?

- A. Shoulder joint
- B. Joint between parietal bone and temporal bone .
- C. joint between carpals
- D. Joint between sternum and ribs

**Answer: B**

 [Watch Video Solution](#)

73. Semicircular canals exhibit all these features except :

- A. They form part of the vestibular apparatus



B. They are set at right angles to one another

C. Both ends of each canal swell to form ampullae

D. Each ampulla is concerned with maintenance of balance and posture of the body

**Answer: C**



**Watch Video Solution**

**74.** Which of the following is not an aerial adaptation in birds

A. Pneumatic bone

B. Atrophied right ovary and oviduct

C. Sternum with keel

D. Crop and gizzard in the alimentary canal

**Answer: D**



**Watch Video Solution**

**75.** Select the INCORRECT statement .

A. Neuroglial cells provide support to o the neurons .

B. Neurons cells are capable of conduction .

C. They are capable of regeneration .

D. Glial cells provide protection by phagocytosis .

**Answer: B**



[Watch Video Solution](#)

76. What is the chemical nature of lecithin ?

- A. Steroid
- B. Glycolipid
- C. Carbohydrate
- D. Phospholipid

**Answer: D**



[Watch Video Solution](#)

77. During each cardiac cycle , two prominent sound are produced which can be easily heard through a stethoscope . The second heart sound is associated with :

- A. Closure of the bicuspid valves
- B. Closure of the tricuspid valves
- C. Closure of the semilunar valves
- D. Opening of the semilunar valves

**Answer: C**



**Watch Video Solution**

**78.** Which of the following is the correct Statement about spermatogenesis ?

- A. spermatogenesis have 46 chromosomes and always undergo meiotic cell division .
- B. Primary spermatocytes divide by mitosis .
- C. Secondary spermatocytes have 23 chromosomes and undergo second meiotic division
- D. Spermatozoa are transformed into spermatids .

**Answer: C**

 [Watch Video Solution](#)

79. The primary target of the hormones of hypothalamus is

A. Pineal gland .

B. thymus .

C. Pituitary .

D. testis .

**Answer: C**



[Watch Video Solution](#)

80. Which of the following is not a secondary metabolite?

A. Glycerol

B. Morphine

C. Cellulose

D. Ricin

**Answer: A**



**Watch Video Solution**

**81.** Genetic drift occurs when a few individuals of a species colonise an island. This particular phenomenon is known as

A. the bottleneck effect .

B. the founder effect .

C. assortative mating

D. random mating .

**Answer: B**

 [Watch Video Solution](#)

**82.** Which of the following is found in succus entericus ?

A. Enterokinase and nucleosidase

B. Trypsinogen and lactase

C. Nucleosidase and amylopsin

D. Carboxypeptidase and amylase

**Answer: A**

 [Watch Video Solution](#)



83. Which one of the following is not the function of placenta?

A. Facilitates removal of  $CO_2$  and waste material from embryo .

B. Secretes oxytocin during parturition.

C. Facilitates supply of oxygen and nutrients to embryo .

D. Secretes estrogen .

**Answer: B**



**Watch Video Solution**

**84.** What will be the  $pO_2$  the atmosphere to facilitate inspiration ?

A. 116 mm Hg

B. 159 mm Hg

C. 104 mm Hg

D. 95 mm Hg

**Answer: B**

 [Watch Video Solution](#)

**85.** Dwarfism is a hormonal disorder due to

A. Deficiency of thyroxine secreted by the thyroid

B. Excess of thyroxine

C. Deficiency of STH produced by the pituitary

D. Deficiency of FSH and LH

**Answer: C**



**Watch Video Solution**

**86.** The renal tubular of the uriniferous tubule is mainly made up to .... epithelium.

A. Squamous

B. Cuboidal

C. Columnar

D. Ciliated

**Answer: B**

 [Watch Video Solution](#)

**87.** Select the incorrect statement.

A. During inspiration intra-pulmonary volume decreases .

B. During expiration intra-pulmonary pressure increases.

C. Contraction of diaphragm increases the volume of thoracic chamber in the antero - posterior axis .

D. Contraction of internal intercostal muscles increases the volume of thoracic chamber in the dorso-ventral axis .

**Answer: D**



**Watch Video Solution**

**88.** Which of the following layers in the wall of uterus does not undergo cyclical changes ?

A. Perimetrium only

B. Myometrium only

C. Perimetrium and Myometrium

D. Endometrium only

**Answer: C**

 [Watch Video Solution](#)

**89.** Which of the following is correctly matched ?

A. Darwin : use and discus of organs

B. Hugo de Vries : Mutation theory

C. Lamarck : Origin of life

D. Haldane : Law of heredity

**Answer: B**

 [Watch Video Solution](#)

90. The surgical removal of the thymus of a newborn will result in the failure of development of

- A. anti-allergic granulocyte.
- B. Phagocytic agranulocytes.
- C. humoral immunity.
- D. cell-mediated immunity .

**Answer: D**



**Watch Video Solution**