



## BIOLOGY

### BOOKS - NTA MOCK TESTS

#### NTA NEET SET 75

#### Biology

1. Which of the following groups of organisms have kidneys as their excretory organs ?

A. Tunicates, Lancelets Cyclostomes , chondrichthyes, Osteichthyes and Amphibians

B. Cyclostomes , chondrichthyes, Osteichthyes and Amphibians

C. Lancelets Cyclostomes , chondrichthyes, Osteichthyes and Amphibians

D. Tunicatse Cyclostomes , chondrichthyes, Osteichthyes and  
Amphibians

**Answer: B**

 [Watch Video Solution](#)

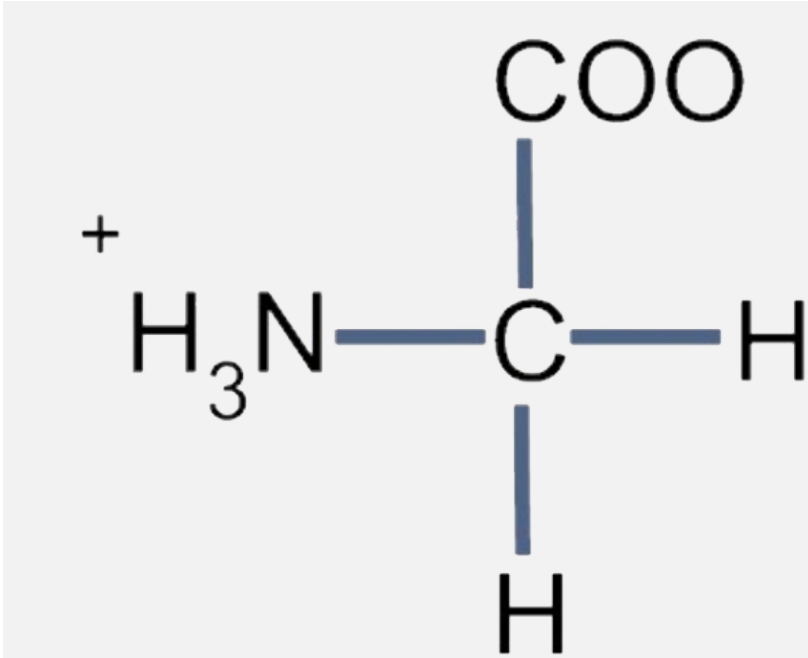
2. Choose the INCORRECT statement.

- A. All protozoans are heterotrophs
- B. All protists are autotrophs
- C. Pellicle is present in euglenoids
- D. both (B) &(C)

**Answer: B**

 [Watch Video Solution](#)

3. Identify the amino acid represented in the diagram below.



- A. Glycine
- B. Tryptophan
- C. Serine
- D. Alanine

**Answer: A**

 [Watch Video Solution](#)

4. The main collecting duct of the lymphatic system , the thoracic dut, receives lymph from the

A. left side of the head , neck , chest , left upper extremity and the left side of the body below the ribs

B. right side of the head , neck , chest , left upper extremity and the left side of the body below the ribs

C. right side of the head , neck , chest , left upper extremity and the left side of the body below the ribs

D. left side of the head , neck , chest , left upper extremity and the entire body below the ribs

**Answer: D**



**Watch Video Solution**

5. Trachea is a straight tube extending up to the mid-thoracic cavity, which divides at the level of

- A. 3 th cervical vertebrae
- B. 5th cervical vertebrae
- C. 5th thoracic vertebrae
- D. 12th thoracic vertebrae

**Answer: C**



[Watch Video Solution](#)

6. ' Contractile vacuole ' play important role in excretion in

- A. Amoeba
- B. Paramecium
- C. Hydra
- D. both (A)&(B)

**Answer: D**

 [Watch Video Solution](#)

7. In Whittaker's five kingdom system , the viruses are given the place in

A. Monera

B. Protista

C. Fungi

D. They do not have any place in 5 kingdom system

**Answer: D**

 [Watch Video Solution](#)

8. Which of the following conditions are correct ?



A. (a)

B. (b)

C. (c)

D. (d)

**Answer: B**



[Watch Video Solution](#)

9. A patient's blood report reads eosinophilia . He must be suffering from

A. a bacterial infection of some kind

B. a viral infection of some kind

C. an allergy of some kind

D. an immunodeficiency of some kind

**Answer: C**



[Watch Video Solution](#)

10. Each of the following statements has 2 blanks . Mark the statement in which both the blanks can't be filled with the same data.

A. The contraction of diaphragm causes.....in the volume of thorax and the contraction of external intercostal muscles causes .... in the volume of thorax.

B.  $pO_2$  in deoxygenated blood of .....mm Hg and  $pCO_2$  in Oxygenated blood is ....mm Hg.

C. About .....% of carbon dioxide is carried by hemoglobin is carbaminhaemoglobin and solubility of carbon dioxide is ..... times higher than that of oxygen.

D. High  $pCO_2$  shifts the oxygen dissociation curve to the .....and high pH shifts the oxygen dissociation curve to the ..... .

Answer: D



Watch Video Solution



11. An example of syncytium is

- A. Pollen grain formation after meiosis
- B. Any normal cell division
- C. liquid endosperm in coconut
- D. Human zygote

**Answer: C**



[Watch Video Solution](#)

12. The proteins after other normal proteins with the living cells are termed as

- A. Plasmids
- B. Phages

C. Prions

D. Virioids

**Answer: C**



[Watch Video Solution](#)

**13. Which of the following IS INCORRECT about glycogen ?**

A. It is a stored form of glucose in animals

B. In glycogen , right end is reducing and left end is non-reducing

C. It is a branched polymer of glucose

D. It is a good reducing agent

**Answer: D**



[Watch Video Solution](#)

14. The 'Fluid Mosaic Model' of plasma membrane was proposed by

A. Schleiden & Schwann

B. Rodlf Virchow

C. Singer & Nicolson

D. Schwann & Nicolson

**Answer: C**



[Watch Video Solution](#)

15. The complex formed by a pair of synapsed homologous chromosomes is called

A. kinetochore

B. bivalents

C. axoneme

D. equatorial plate

**Answer: B**



**Watch Video Solution**

**16. Insulin cannot be orally administered to a diabetic patient because**

- A. It is bitter in taste
- B. It is a glycoprotein
- C. It is proteinaceous
- D. It is very expensive to get oral form of insulin

**Answer: C**



**Watch Video Solution**

**17. Which one of the following statements is true regarding digestion and absorption of food in humans?**

- A. Oxytocin cells in our stomach secrete the proenzyme pepsinogen
- B. About 60% of starch is hydrolyzed by salivary amylase in our mouth
- C. Chylomicrons are small lipoprotein particles that are transported from intestine into blood capillaries
- D. Fructose and amino acids are absorbed through intestinal mucosa with the help of carrier ions like  $Na^+$

**Answer: D**



**Watch Video Solution**

**18. Juxta glomerular apparatus is formed by**

- A. Modified cuboidal cells of DCT
- B. Modified cuboidal cells of thick segment of descending limb of loop of Henle
- C. Smooth muscle cells of vasa recta

D. Cellular modifications in the distal convoluted tubule and the afferent arterioles at the location of their contact

**Answer: D**



**Watch Video Solution**

19. A middle aged woman visits a doctor complaining of irregular menses , weight loss, and recurrent diarrhea . On testing , a certain hormone comes out to be elevated . On questioning why she is experiencing such symptoms, the doctor informs that basal metabolic rate and also water and electrolyte imbalance cycle . Which hormone is the doctor talking about ?

A. Cortisol

B. Aldosterone

C. Melatonin

D. Thyroid hormone

**Answer: D**



**Watch Video Solution**

**20.** Which of the following is INCORRECT with respect to bone and its associated part ?

A. Atlas vertebra - Odontoid process

B. Pectoral girdle - Acromion process

C. Humans - Trochlea

D. Ulna - styloid process

**Answer: A**



**Watch Video Solution**

**21.** During which phase(s) of cell cycle amount of DNA in a cell remains at 4C level if the initial amount is denoted as 2C

A.  $G_0$  and  $G_1$

B.  $G_1$  and  $S$

C. Only  $G_2$

D.  $G_2$ , and  $M$

**Answer: C**



**Watch Video Solution**

**22.** The coloured part of the eye which controls the amount of light of light entering the eye is a modified part of the

A. Sclerotic and choroid

B. retina

C. Choroid

D. Choroid and retina

**Answer: C**



 [Watch Video Solution](#)

23. Which of the following structure is are not present in the male genital part of a cockroach ?

(i) Ejaculatory duct (ii) Vasa differentia (iii) seminal vesicle (iv) Vestibulum  
(v) Phallomere of

A. i,ii, iii,iv,v

B. i iii only

C. Only iv

D. i , iii, iv,v

**Answer: C**

 [Watch Video Solution](#)

24. Reena was experiencing headache and dizziness for the last few days .  
When visited a clinic, the doctor informed that her blood pressure is high.

Which of the following hormones will be secreted in body to reduce the blood pressure ?

I. Aldosterone

II. Cortisol

III. Atrial Natriuretic factor

IV. Erythropoietin

A. I only

B. I and II

C. III only

D. I and III

**Answer: D**



**Watch Video Solution**

**25.** In a sarcomere , the H - zone is paler than the rest of A-band because it consists of

- A. Only myosin filaments
- B. Only actin filaments
- C. both actin and filaments
- D. filaments are absent

**Answer: A**

 [Watch Video Solution](#)

**26.** A boy learns typewriting and harmonium at the same time. He finds harmonium more easy to learn. This is

- A. Conditioned reflex
- B. Short term homeostasis
- C. Long term homeostasis
- D. Residual learning

**Answer: A**

27. Read the following statements and select the correct option

- (i) Blood cells secrete fibres of structural proteins called collagen and elastin
- (ii) Neuroglial cells protect and support the nephrons
- (iii) Osteocytes are present in spaces called lacunae
- (iv) Striated muscle fibres are bundled together in a parallel fashion
- (v) Biceps are involuntary and striated.

A. c and d

B. b and d

C. a and c

D. a,d and e

**Answer: D**

28. Match the following.

Column I	Column II
(P) Flora	(I) Information for identification of names of species found in an area.
(Q) Manuals	(II) Provides an index to plants species found in an area
(R) Monograph	(III) Information of one taxon
	(IV) Contains an actual account of habitat and distribution of plants of a given area.

- A. (P)– ( II,IV), (Q) –(I) , (R) – (III)
- B. (P)– ( I), (Q) –(II) , (R) – (III,IV)
- C. (P)– ( I, II ), (Q) –(IV) , (R) – (III)
- D. (P)– ( IV), (Q) –( II ,III) , (R) – (I)

**Answer: A**



**Watch Video Solution**

29. Identify the incorrect character related to the human female reproductive system .

A. Menstruation lasts for 3 – 5 days.

B. Menstruation is repeated at an average interval of about 28/29 days.

C. Menopause occurs around 50 years of age .

D. Ovulation occurs during the pregnancy period as well

**Answer: D**



**Watch Video Solution**

30. Which of the following will occur in the vertebrae host with respect to plasmodium ?

(a) Formation of the motile zygote

(b) Maturation of gametocytes (c) Formation of Sporozoites

(d) Release of homozoin

(e) Recurrent fever

A. a,c,d

B. a,b,c,d,e

C. b,d and e

D. d and e only

**Answer: D**



**Watch Video Solution**

**31.** Choose the right one among the statements given below .

A. IUDs are generally inserted by the user herself

B. IUDs increase phagocytosis reaction in the uterus

C. IUDs suppress gametogenesis

D. IUDs once inserted need not be replaced

**Answer: B**



**Watch Video Solution**

**32.** Physiological barriers that prevent microbial growth exclude

- A. Mucus in urogenital tract
- B. Acid in stomach
- C. Saliva in mouth
- D. Tears in eyes

**Answer: A**



**Watch Video Solution**

**33.** In human, placental villi are derived from

- A. Chorion



B. Allantois

C. Yolk sac

D. Amnion

**Answer: A**



[Watch Video Solution](#)

**34.** Which of the following not a characteristic feature of nematodes ?

A. Sexes are separated

B. Alimentary canal is complete

C. Bilateral symmetary

D. They are always endoparasitic

**Answer: D**



[Watch Video Solution](#)

35. In Basidiomycetes , the site for meiosis is

- A. Basidium
- B. Basidiospores
- C. Basidiocarp
- D. Conidium

**Answer: A**



[Watch Video Solution](#)

36. If the menstrual cycle of a female is 28 days , what will be the time period of periodic abstinence (avoiding a sex) as natural method of contraception ?

- A. 13th to 20th day of menstrual cycle
- B. 5th to 12th day of menstrual cycle
- C. 17th to 24th day of menstrual cycle

D. 10th to 17th day of menstrual cycle

**Answer: D**



[Watch Video Solution](#)

**37.** Select the incorrect statement about external fertilisation.

- A. Origin is showing external Fertilization product a large number of male gametes only .
- B. External fertilization is very uncertain and requires synchrony between release of male and female gametes .
- C. It is replaced by internal fertilization in higher organisms as it wastes energy and requires external medium like water.
- D. It occurs in most of the fish and Amphibians.

**Answer: A**



[Watch Video Solution](#)

**38.** A factory worker has been dealing with severe internal bleeding , muscular pain and blockage of the intestine along with a high fever . While explaining his symptoms to the doctor , the man also mentions that he had a tendency of consuming vegetables without washing them. Which of the following properties is responsible for this disease ?

A. Plasmodium

B. Ascaris

C. Wuchereria

D. Entamoeba

**Answer: B**



**Watch Video Solution**

**39.** Which of the following can't be taken as the character/function of the sertoli cell ?

- A. Release of ABP
- B. Contribute of major part of seman
- C. Nourishment to spermatids
- D. Formation of blood testes barrier

**Answer: B**

 [Watch Video Solution](#)

**40.** In a dicot root , vascular cambium is

- A. completely primary
- B. partially primary and partially secondary
- C. completely secondary
- D. Sometimes primary something secondary

**Answer: C**

 [Watch Video Solution](#)

41. Why is vivipary an undesirable character for annual crop plants ?

- A. It reduces the vigour of the plant
- B. It adversely affects the fertility of the plat
- C. The seed exhibit long dormancy
- D. The seed cannot be stored under normal conditions for the next season

**Answer: D**



[Watch Video Solution](#)

42. If the number of chromosomes present in the egg of a gymnosperms plant is 10 , then the number of chromosomes present in the endosperm of the same plant is

A. 30

B. 20

C. 10

D. 40

**Answer: C**



**Watch Video Solution**

**43. Match the following.**

Column I

Column II

(1)  $Mg^{2+}$ , (i) Chlorophyll

(2) P (ii) *ATP*

(3) *Zn* (iii) Alcohol dehydrogenase

(4) *Mo* (iv) Nitrogenase

A. (1)–(ii) ,(2)–(i),(3) –(iii), (4)– (iv)

B. (1)–(i) ,(2)–(ii) ,(3) –(iii), (4) – (iv)

C. (1)– (iv) , (2)–(i) ,(3) –(ii), (4)–(iii)

D. (1)– (iv) ,(2)–(iii) , (3) – (ii), (4)– (i)

**Answer: B**



**Watch Video Solution**

**44.** Find out correct order of vegetative propagules of plants like potato, ginger Agave, Bryophyllum and water hyacinth.

- A. Rhizome, offset , eyes, leaf bud
- B. Eyes, rhizome , offsets , leaf bud
- C. Eyes, rhizome ,leaf bud , offsets
- D. leaf bud , Rhizome, offset , eyes

**Answer: C**



**Watch Video Solution**

**45.** During photosynthesis , the oxygen from  $CO_2$  is incorporated into



A. Oxygen gas

B. Water

C. Carbohydrates

D.  $NADPH_2$

**Answer: C**



**Watch Video Solution**

**46.** In Krebs cycle, the FAD participates as electron acceptor during the conversion of

A. Succinyl CoA to succinic acid .

B. alpha -ketoglutarate to succinyl CoA.

C. fumaric acid to malic acid .

D. Succinic acid to fumaric acid.

**Answer: D**

 [Watch Video Solution](#)

47. What will be the direction of movement of water , when solution X having water potential of 12 - bars and another solution Z to -8 bars is separated by a semipermeable membrane ?

- A. Z to X
- B. X to Z
- C. Both direction
- D. There will be no movement

**Answer: A**

 [Watch Video Solution](#)

48. Biosphere reserves are different from National Park as

- A. Plants and animals are protected in biosphere reserves .

- B. humans are an integral part of biosphere reserves .
- C. humans are not involved in biosphere reserves .
- D. More than one option is correct

**Answer: B**



[Watch Video Solution](#)

**49.** The plasmid pUC derives its name from

- A. the researchers who discovered it
- B. the source it was discovered from .
- C. the place it was discovered at.
- D. the role it was discovered for

**Answer: C**



[Watch Video Solution](#)

50. If 20kj energy is available at the producer level , then how much energy will be transferred to the lion in the food chain : producer → deer rarr` lion ?

- A. 0.2 kj
- B. 0.02 kj
- C. 0.002 kj
- D. 2 kj

**Answer: A**



[Watch Video Solution](#)

51. Which plant is generally called " terror of Bengal "?

- A. Water lettuce
- B. Eicchornia crassipes
- C. Hydrilla

D. Vallisneria

**Answer: B**



**Watch Video Solution**

**52.** Operin 's theory of chemical was written in the book :

A. Origin of species bu natural selection

B. Genetics and origin of species

C. Origin of life

D. Philososphiezoologique

**Answer: C**



**Watch Video Solution**

**53.** Bacutoviruses based insecticide has been found to eliminate

A. Arthropods.

B. Annelids .

C. Platyhelminthes.

D. Aschelminthes.

**Answer: A**



**Watch Video Solution**

**54.** Which of the following Proteins helps in holding DNA together in eukaryotes ?

A. Negatively charged proteins

B. Acidic proteins

C. Amphioteric Proteins

D. Histone proteins

**Answer: D**

 [Watch Video Solution](#)

55. The interdependent evolution of flowering plants and pollinating insects together is known as

- A. Predation .
- B. co-evolution .
- C. Commensalism.
- D. Proto-cooperation

**Answer: B**

 [Watch Video Solution](#)

56. When closely placed genes on the same chromosomes are inherited together the phenomenon is known as

- A. linkage

B. Crossing

C. gene interaction .

D. multiple allelism .

**Answer: A**



**Watch Video Solution**

57. Seeds offer several advantages to angiosperms, one of them is that seed formation is more dependable . This is because :

A. Being products of sexual reproduction they generate new genetic combinations leading to variations.

B. They have sufficient food reserves to nourish young seedlings.

C. They have better strategies for dispersal to new habitats help the species colonize new areas.



D. Reproductive processes such as pollination and fertilization are independent of water .

**Answer: D**



**Watch Video Solution**

**58. CORRECT** sequence of evaluation and release of new cultivars is .....

- (i) growing plants in natural fields in different agro-climatic zones .
- (ii) growing plants in research fields under controlled conditions.
- (iii) released of improved variety under a new name .

A. (i)– (ii) – (iii)

B. (ii)– (iii) – (i)

C. (ii)– (i) – (iii)

D. (i) – (iii) only

**Answer: C**



**Watch Video Solution**

59. What is true about cuticle in plants ?

- A. It is always associated with epidermal cells.
- B. It is always associated with ground tissue.
- C. Cuticle is absent in roots.
- D. Both (A) & (C)

**Answer: D**



Watch Video Solution

60. A diagnostic trait for identification of fabaceous flower is

- A. tetradynamous androecium
- B. Inferior ovary.
- C. Perianth.

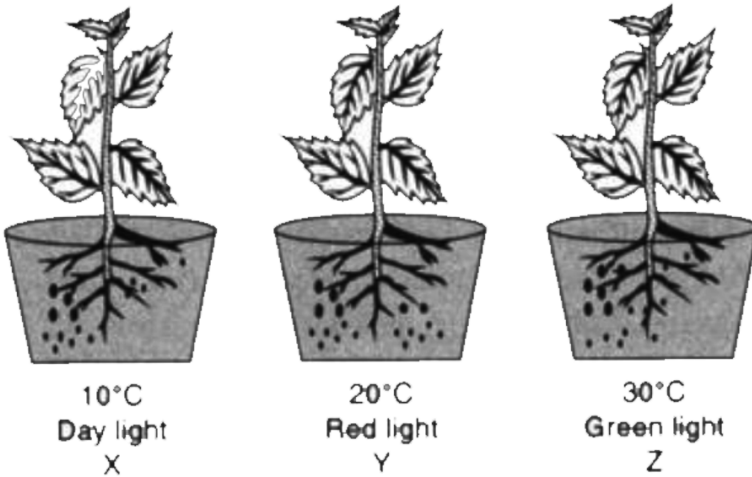
D. vexillary aestivation in corolla .

Answer: D

 [Watch Video Solution](#)

61. The diagram below shows three plants with identical leaf surface area

:



Assuming all other conditions were identical for all three plants , which of the plants would likely to photosynthesize slowest and fastest.

A. Y : slowest , Z : fastest

B. Z : slowest , X : fastest

C. X : slowest , Z : fastest

D. Z : slowest , Y : fastest

**Answer: D**



[Watch Video Solution](#)

**62. What is the meaning of bolting ?**

A. Internode elongation just after flowering

B. Internode elongation just prior to flowering

C. Removal of dicot weeds

D. To include parthencarpy

**Answer: B**



[Watch Video Solution](#)

**63.** Select the CORRECT statements.

(I) In Volvox, sexual reproduction involves the fusion of one large , static male gamete and a smaller motile female gamete.

(II) In Spirogyra , fusing gametes are non-flagellated and dissimilar in size.

(III) In Ullothrix , fusing gametes are flagellated and similar in size .

(IV) In Fucus, the female gamete is large and non-motile whereas male gamete is small and motile .

A. I, III

B. II, III

C. III, IV

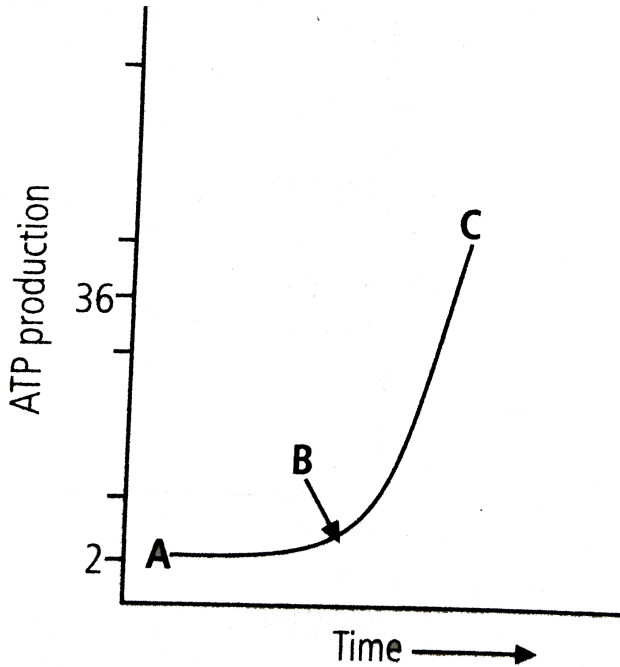
D. I, II

**Answer: C**



**Watch Video Solution**

64. Animal cells are suspended in a culture medium that contains excess glucose. The graph below shows glucose utilisation under different growth conditions (A),(B), and (C) in the graph indicate



A. X – Anaerobic respiration

Y - Introduction of  $O_2$  to the culture medium

Z - Aerobic respiration

B. X – Anaerobic respiration

Y - Introduction of  $CO_2$  to the culture medium

Z - Aerobic respiration

C. X – Anaerobic respiration

Y - Supply of organic triphosphate

Z - Aerobic respiration

D. X – Anaerobic respiration

Y - Introduction of CO to the culture medium

Z - Aerobic respiration

**Answer: A**



[Watch Video Solution](#)

**65.** For frugivorous birds and mammals in the tropical forests of different continents the slope is found to be

A. 0.6

B. 1.3

C. 1.15

D. 1

**Answer: C**



**Watch Video Solution**

66. In Ell Lily's method of inulin production , which of the following is correct ?

- A. A peptide and B peptide were produced from the same host cell
- B. A peptide and B peptide were produced from different host cells.
- C. A peptide and B peptide C peptide were produced from the same host cell
- D. A peptide and B peptide C peptide were produced from different host cell s.

**Answer: B**



 [Watch Video Solution](#)

67. Which of the following is one - way flow rather than a two way or cyclic flow ?

- A. Carbon
- B. Nitrogen
- C. Potassium
- D. Free energy

**Answer: D**

 [Watch Video Solution](#)

68. Greenhouse gases are :

- A. Absorbers of long - wave radiations from earth

B. Transparent to both solar radiations and long wave radiations from earth

C. Absorbers of solar radiations for warming the atmosphere

D. Transparent to emissions from earth for passage into outer space

**Answer: A**

 [Watch Video Solution](#)

**69.** The deletion in chromosomes number 16 results in

A. Pleiotropy.

B. quantitative problem of RBC's

C. quantitative problem of RBC's

D. hypertrichosis .

**Answer: B**

 [Watch Video Solution](#)

70. In a famous experiment, A Weismann cutt off tails of newborn mice generation after generation. At the end of experiment, tails of mice neither disappeared nor shortened. This experiment

- A. Supports Darwin's theory of natural selection
- B. Proves that tails is an essential organ of vertebraes
- C. Disproves de Varies mutation theory
- D. Show that Lamarch was wrong in his theory of inheritance of acquired characters

**Answer: D**



[Watch Video Solution](#)

71. Which of the following is the correct pairing of characteristics about anther wall ?

A.

Hygroscopic nature	Innermost layer	Fibrous thickening of cellulose
Epidermis	Tapetum	Endothecium

B.

Hygroscopic nature	Innermost layer	Fibrous thickening of cellulose
Endothecium	Tapetum	Middle layer

C.

Hygroscopic nature	Innermost layer	Fibrous thickening of cellulose
Middle layer	Tapetum	Endothecium

D.

Hygroscopic nature	Innermost layer	Fibrous thickening of cellulose
Endothecium	Tapetum	Endothecium

**Answer: D**



[Watch Video Solution](#)

72. The technology of biogas production from cow dung was developed in india largely due to the efforts of

A. Gas Authority of India

B. Oil and Natural Gas commission

C. Indian Agricultural Research Institute and khadi and Village

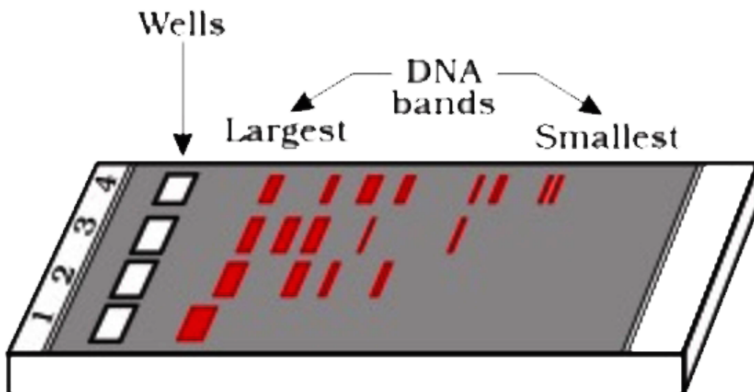
Industries Commission

D. Indian Oil Corporation .

**Answer: C**

[▶ Watch Video Solution](#)

73. Given diagram showing a typical agarose gel electrophoresis showing migration of DNA fragments . The undigested DNA fragment will be present in the lane



A. 4

B. 3

C. 2

D. 1

**Answer: D**



**Watch Video Solution**

**74.** The part of a gene which codes for an enzyme is called

A. Cistron.

B. Codon .

C. exon.

D. intron .

**Answer: A**



**Watch Video Solution**

75. If a black man marries a white skin female, the mulattoes are born. If such mulattoes intermarry, are born. If such mulattoes intermarry, the progeny will show a gradual gradation of skin colour in the ratio of

A. 9: 3: 3: 1

B. 1: 4: 6: 4: 1

C. 1: 4: 6: 15: 20: 15: 6: 4: 1

D. 1: 6: 15: 20: 15: 6: 1

**Answer: D**



[Watch Video Solution](#)

76. Floral formula of cabbage is

A. 

B. 

C. 

D. 

**Answer: B**

 [Watch Video Solution](#)

77. While isolating DNA from bacteria, which of the following enzymes is not used ?

A. Lysozyme

B. Ribonuclease

C. Deoxyribonuclease

D. Protease .

**Answer: C**

 [Watch Video Solution](#)



78. Which of the following is correct about the given pedigree chart ?



- A. Inheritance of a condition like phenylketonuria as an autosomal recessive trait .
- B. The pedigree chart is wrong as this is not possible .
- C. Inheritance of a recessive sex - linked disease like haemophilia .
- D. Inheritance of a sex - linked inborn error of metabolism like phenylketonuria.

**Answer: A**



**Watch Video Solution**

79. A tetraploid female flowering plant and a hexaploid male flowering plant are crossed , endosperm will be

- A. heptaploid .

B. triploid.

C. hexaploid.

D. Pentaploid.

**Answer: A**



[Watch Video Solution](#)

**80.** In wheat and rice :

A. Pericarp is fused with seed coat

B. Perisperm is fused with seed coat

C. Seed coat and pericarp are separate

D. Fruit is multiseeded

**Answer: A**



[Watch Video Solution](#)

81. Which of the following group exhibit more species diversity

A. Angiosperm

B. Algae

C. Bryophytes

D. Fungi

**Answer: A**



[Watch Video Solution](#)

82. About (X) recombinant therapeutics have been approved for human use the world over out of which (Y) are presently being marketed in India

A. X - 25 , Y - 12

B. X - 30 , Y - 12

C. X - 25 , Y - 10

D. X - 30 , Y - 10

**Answer: B**



**Watch Video Solution**

**83.** Bacteria attacking the dead animals , represents ,

- A. First link of the food chain and are known as primary producers
- B. Second link of the food chain and are herbivorous
- C. Third link of the food chain and are tertiary consumers
- D. The end of food chain and are decomposers

**Answer: D**



**Watch Video Solution**

**84.** What type of gametes will be formed by genotype RrYy ?

- A. RY, Ry ,rY, ry

B. RY, Ry, ry, ry

C. Ry,Ry,Yy,ry

D. Rr,RR,Yy,YY

**Answer: A**



**Watch Video Solution**

**85. Cross - pollinating plants**

- (i) produce offsprings having variation among themselves .
- (ii) Reduces inbreeding depression .
- (iii) Results in the production of pure line homozygous offsprings.
- (iv) Having bisexual flowers or have monoecious conditions.

- A. (i), (ii) and (iv) are correct
- B. (ii), (iii) and (iv) are correct
- C. (i) and (ii) are correct
- D. (ii) and (iii) are correct

**Answer: C**



**Watch Video Solution**

**86.** The most apparent change during the evolutionary history of Homo sapiens is traced in

- A. remarkable increase in the brain size
- B. bipedal locomotion .
- C. Shortening of jaws.
- D. All of these

**Answer: D**



**Watch Video Solution**

**87.** Which of the following is not a property of the genetic code ?

A. Non-overlapping

B. Degeneracy

C. Universal

D. Ambiguous

**Answer: D**



**Watch Video Solution**

**88.** Gause's Competitive exclusion principle states that :

A. Two unrelated genus competing for the same resources cannot co-exist indefinitely and Competitively superior one will get eliminated eventually

B. Two closed related species competing for the same resources cannot co-exist indefinitely and Competitively inferior one will get eliminated eventually

C. Two unrelated species competing for the same workshops resources can co-exist indefinitely and can grow

D. Two closely related species competing for the same resources cannot co - exist indefinitely but can grow together

**Answer: B**

 [Watch Video Solution](#)

**89.** From a single ear of corn, a farmer planted 200 kernels which produced 140 tall and 40 short plants. The genotypes of these offspring are most likely

A. TT and Tt only

B. TT, Tt and ty

C. Tt and tt only

D. TT and tt only



**Answer: B**



**Watch Video Solution**

**90.** The arrangement of the nuclei in a normal embryo sac in the dicot plants is-

A. 3+2+3

B. 2+3+3

C. 3+3+2

D. 2+4+2

**Answer: A**



**Watch Video Solution**