



BIOLOGY

BOOKS - NTA MOCK TESTS

NTA NEET SET 86

Biology

1. Match the following.

	Column I		Column II
A	Epinephrine	i	Stimulates muscle growth
B	Testosterone	ii	The decrease in blood pressure
C	Glucagon	iii	Breakdown of liver glycogen
D	Atrial natriuretic factor	iv	Increases heartbeat

A. A - ii, B - i, C - iii , D - iv

B. A - iv, B - i , C - iii , D - ii

C. A - i , B - ii, C - iii, D - iv

D. A - i, B - iv , C - ii, D - iii

Answer: B



[Watch Video Solution](#)

2. Development of a sporophyte directly from the gametophytic tissue is called

A. Apospory

B. Apogamy

C. Adventive embryony

D. Parthenogenesis

Answer: A



[Watch Video Solution](#)

3. Which type of movement is shown by macrophages ?

- A. Ciliary
- B. Amoeboid
- C. Flagellar
- D. Muscular .

Answer: B

 Watch Video Solution

4. In which of the following fungi , the plasmogamy is followed by karyogamy, immediately?

- A. Mucor

B. Aspergillus

C. Ustilago

D. Puccinia

Answer: A



Watch Video Solution

5. Identify in order, the plants showing alternate, opposite and whorled phyllotaxy

A. China rose , Calotropis and Nerium

B. China rose, Nerium and Calotropis

C. Nerium , Calotropis and China rose

D. Calotropis , China rose and Nerium

Answer: A



Watch Video Solution

6. Which of the following is only present in RNA

- A. 5-methyl uracil
- B. 2,4 dioxo uridylate
- C. 6-amino purine
- D. 2 -amino 6-oxy purine

Answer: B



Watch Video Solution

7. How many of the following features are applicable to the hormones ?

- i. The non-nutrient chemicals
- ii. Intracellular messengers
- iii. Released in blood or open spaces
- iv. Produced in trace amounts

A. None

B. One

C. Two

D. Three

Answer: C



Watch Video Solution

8. Calcitonin is

- A. Protein hormone
- B. increases blood calcium level
- C. Secreted from parathyroid gland
- D. both 'a' and 'b'

Answer: B



[Watch Video Solution](#)

9. The lysosome contains hydrolytic enzymes. For the functioning of enzymes, the pH inside the lysosome is

- A. independent of the H^+ ion concentration.
- B. decreased by active pumping of H^+ to the cytoplasm.

C. increased by. Simple diffusion of H^+ from the cytoplasm.

D. dependent on the K^+ ion concentration of the cytoplasm .

Answer: A



[Watch Video Solution](#)

10. Nuclear DNA exists as complete of nucleoprotein called ...A.. that condenses into ...B.. during ...C... These A, B,C are respectively

A. Chromatids , chromosomes,Interkinesis .

B. chromosomes Chromatids , S-phase.

C. Chromatin , Chromosome , Interphase .

D. Chromatin , Chromosome , M - phase .

Answer: D



[Watch Video Solution](#)

 [Watch Video Solution](#)

11. The part of internal ear not responsible for dynamic balancing is

- A. cochlea
- B. Semicircular canal
- C. Utriculus
- D. Sacculus

Answer: A

 [Watch Video Solution](#)

12. Select the incorrect match from the options given below.

- A. Incomplete dominance -Dog flower

B. Pleiotropy - *Pisum sativum*.

C. Female heterogamety - Grasshopper

D. Klinefelter's syndrome - XXY

Answer: C



Watch Video Solution

13. Select the incorrect statement from the following .

A. During oxidation within a cell all the energy contained in respiratory substrate is released free into the cell.

B. Energy is released in a series of slow step wise reactions controlled by enzymes.

C. Energy is trapped as chemical energy in the form of ATP.

D. Energy released by oxidation, in respiration is not used directly.

Answer: A

 [Watch Video Solution](#)

14. Select the incorrect statement from the following.

- A. Characters are controlled by discrete unit called factors
- B. Factors occurs in pair
- C. In a similar part of factors one member of the pair dominates (dominant) the other (recessive)
- D. homozygous parent produces all gametes they are similar

Answer: C

15. Read the statements :

A. Dura mater is a thick inner meninge .

B. The medulla is an important center for both respiration and circulation .

C. Cyton possesses Nissl's granules but these are absent in dendrites.

How many of the given Statements are correct ?

A. None

B. One

C. Two

D. All

Answer: B

16. Identify the incorrect statement.

- A. In asexual reproduction, the offspring produced are morphologically and genetically identical to the parent.
- B. Zoospores are sexual reproductive structures.
- C. In asexual reproduction, a single parent produces offsprings with or the formation of gemmates.
- D. Conidia are asexual structures in structures.

Answer: B



Watch Video Solution

17. Why Mendel's work was not recognized till 1900?

- A. His work could not be widely published.
- B. His concept of factor (stable and discrete units that control expression of trait) was not accepted by his contemporaries.
- C. His approach of using mathematics to explain biological phenomenon was new to the biologists of his time.
- D. All of these

Answer: D

 [Watch Video Solution](#)

18. Select the option which gives the correct information about the white muscle fiber .

- A. The amount of endoplasmic reticulum is high and the number of Mitochondria is low
- B. The amount of endoplasmic reticulum is high and the number of Mitochondria is also high
- C. The amount of endoplasmic reticulum is low and the number of Mitochondria is high
- D. The amount of endoplasmic reticulum is low and the number of Mitochondria is low

Answer: A



Watch Video Solution

19. Adaptation is , an attribute of the organism (morphological , physiological and behavioral) that enables the organism to

- A. Survive in its habitat
- B. to reproduce in his habitat
- C. Survive and reproduce in its habitat
- D. evolve in its habitual

Answer: C

 [Watch Video Solution](#)

20. How many of the following statements are correct regarding properties of enzyme ?

- (i) It lowers down the activation energy of the reaction .
- (ii) An active site of the enzyme is the pocket into which the substrate fits .
- (iii) The catalytic structure of most of the enzyme is globular and primary .

(iv) Carbonic anhydrase enzyme is considered as the fastest enzyme.

A. 2

B. 3

C. 4

D. 1

Answer: D



Watch Video Solution

21. Which of the following structure is not related to the life cycle of Funaria ?

A. Protonema

B. Spore

C. Prothallus

D. Antheridia

Answer: C



Watch Video Solution

22. List some of the plants are given below. How many plant /s/is/ are vascular and monoecious ?

Chara, pinus , Cycas , Sphagnum , Maize, Papaya

A. One

B. Two

C. Four

D. Three

Answer: B



[Watch Video Solution](#)

23. Which of the following 'suffixes' is used for "family " in classification ?

- A. — Ales
- B. — One
- C. — Aceae
- D. — Ae

Answer: C



[Watch Video Solution](#)

24. Lateral roots and vascular cambium originates due to the activity of which tissue in dicot root ?

- A. Endodermis
- B. Pericycle
- C. Casparian strip
- D. Periderm

Answer: B

 [Watch Video Solution](#)

25. In animal and plant cell the division of Cytoplasm is respectively

- A. Centripetal and centripetal
- B. Centrifugal and centripetal
- C. Centripetal and centrifugal
- D. Centrifugal and centrifugal

Answer: C



Watch Video Solution

26. These floral characters are of a specific family . Identify the plant which shows the following characters.

- 1 . Flower-bisexual , zygomorphic
2. Corolla - vexillary aestivation
3. Androecium - diadelphous
4. Gynoecium - ovary superior
5. Seed-Non-endospermic

- A. Petunia
- B. Colchicum
- C. Indigofera
- D. Belladonna

Answer: C



Watch Video Solution

27. Which of the plant shows clear cut vegetative, reproductive, and senescent phases ?

A. Pea

B. Mango

C. Orange

D. Plum

Answer: A



Watch Video Solution

28. COP -21 is also known as

- A. The Earth summit
- B. The paris agreement
- C. The Montreal protocol
- D. The Kyoto protocol

Answer: B



Watch Video Solution

29. Regarding mutation select how many points are correct ?

- (i) Random
- (ii) Discontinuous
- (iii) Continuous
- (iv) Directionless

- A. Two
- B. Three
- C. Four
- D. Five

Answer: B



Watch Video Solution

30. Which of the following hormones plays an important role in seed maturation ?

- A. ABA
- B. Ethylene
- C. Cytokinin
- D. Auxin

Answer: B

 [Watch Video Solution](#)

31. Choose the incorrect match from the following.

- A. Salt area - Halophiles
- B. Hot spring - Eubacteria
- C. Marshy area - Methanogens
- D. Both (B) and (C)

Answer: B

 [Watch Video Solution](#)

32. How many plants in the list given below are insect - pollinated plants ?

Sunflower , Coconut , water lily, water hyacinth , Vallisneria , Ophrys , papaya , cotton , Banana, Adansonia , Bombax ,Bamboo , wheat , Hydrilla .

A. Seven

B. Ten

C. Eleven

D. Five

Answer: A



[Watch Video Solution](#)

33. Which of the following is not a feature of typical r-selected species ?

- A. On-time big bang reproduction
- B. Large number of offsprings in a single mating
- C. Small - sized offsprings
- D. Long life span

Answer: D

 [Watch Video Solution](#)

34. In a population of 1000 individuals , 500 individuals have Aa genotype and 500 have AA genotype. What will be the proportion of a and A alleles in their gametes ?

A. 1 : 1

B. 1 : 2

C. 1 : 3

D. 3 : 1

Answer: C



Watch Video Solution

35. Match the sites in column-I with process column-II and choose the correct combination b: -

Column I

A Grana of chloroplast

B Mitochondrial matrix

C Cytoplasm of cell

D Stroma of chloroplast

Column II

I light reaction

II dark reaction

III kreb's cycle

IV EMP pathway

A. A - II , B - III, C - IV , D - I

B. A - I , B - III, C - IV , D - II

C. A - IV , B - III, C - I , D - II

D. A - I , B - IV, C - III , D - II

Answer: D



Watch Video Solution

36. Mark the incorrect statement with respect to single -cell protein .

A. It is one of the alternate source of protein for animal and human nutrition

B. It involves growing of unicellular microbes only on industrial scale

C. They can be easily grown on materials like waste water.

D. Such utilisation also reduces environmental pollution .

Answer: B



Watch Video Solution

37. Select the correct match the following.

Column I	Column II
i Phosphorus	a Nitrogenase
ii Magnesium	b Water splitting
iii Sulphur	c Nucleic acids
iv Chlorine	d Thiamine
	e Ribosome structure

A. i - e , ii - a , iii - c , iv - d

B. i - c , ii - e , iii - d , iv - b

C. i - b , ii - c , iii - a , iv - e

D. i - c , ii - a , iii - d , iv - b

Answer: B



Watch Video Solution

38. The first organisms which released oxygen in the environment by its photosynthesis were :

- A. Cyanobacteria
- B. Sulphur bacteria
- C. Iron bacteria
- D. Planktonic sulphur bacteria

Answer: A



Watch Video Solution

39. Read the following four statements (A -D):

(i) The outer wall of the pollen grain is pecto - cellulosic in nature.

(ii) In pollen grain, the generative cell is bigger and contains abundant food reserve.

(iii) In all angiosperm , pollen grains are always shed at the 2-celled stage.

(iv) Usually , sporogenous cell directly behaves as the megaspore mother cell.

How many of the above statements are wrong ?

A. Four

B. One

C. Two

D. Three

Answer: A



[Watch Video Solution](#)

40. Identify the wrong statement/s regarding post-fertilization development .

- A. The ovary wall develops into pericarp
- B. The outer integument of the ovule develops into tegmen
- C. The triple fusion nucleus develops into endosperm
- D. The ovule develops into seed

Answer: B



[Watch Video Solution](#)

41. Select the events that occur in the interphase stage of cell-cycle .

(a) RNA and protein synthesis.

(b) Cytoplasmic growth.

(c) Synthesis of spindle fibres protein.

(d) Disappearance of Golgi body and ER.

A. a and d only

B. a , b and c only

C. b, c and d only

D. c and d only

Answer: B



Watch Video Solution

42. Which of the following filamentous structure are a structural component of the centriole ?

A. Endoplasmic reticulum

B. Microfilament

C. Microtubule

D. Golgi body

Answer: C



Watch Video Solution

43. During light reaction in a chloroplasts , the highest number of protons are found in

A. Stroma

B. Lumen of thylakoids

C. Inter membrane space

D. Antennae complex

Answer: B

 [Watch Video Solution](#)

44. Moll's Half leaf experiment proves that

- A. light is essential for photosynthesis
- B. CO_2 is essential for photosynthesis
- C. O_2 is released during photosynthesis
- D. Chlorophyll is essential for photosynthesis

Answer: B

 [Watch Video Solution](#)

45. Under given suitable conditions, the DPD will be more than OP

- A. OP is equal to TP
- B. OP is less than TP
- C. OP is greater than TP
- D. TP is negative

Answer: D

 [Watch Video Solution](#)

46. In PS I, the reaction centre chl a has absorption maxima at ___ whereas in PS II, the reaction centre Chl a has absorption maxima at ___

- A. 700 nm , 680 nm
- B. 680 nm, 700 nm
- C. 400 nm, 500 nm

D. 700 nm , 800 nm

Answer: A



Watch Video Solution

47. One glucose on complete oxidation yields 36 ATP . During this oxidation of glucose , what is the contribution of the Krebs cycle via oxidative phosphorylation ?

A. 11 ATP

B. 12 ATP

C. 22 ATP

D. 24 ATP

Answer: C



Watch Video Solution

48. Select the incorrect statement from the following.

- A. Flower with inferior ovary is called epigynous flower.
- B. free central and axile placentations are found in primrose and Dianthus , respectively
- C. Sunhemp is a fibre yielding plant consists of diadelphous stamens
- D. In castor and maize seeds are endospermic .

Answer: B



[Watch Video Solution](#)

49. Pith is absent in

- A. Dicot stem
- B. Dicot root
- C. Monocot stem
- D. Monocot root

Answer: C



Watch Video Solution

50. Select the correct option in which all plants belongs to same angiospermic family.

- A. Aloe, Petunia , Lupin
- B. Atropa , Mulatthi, Asparagus
- C. Sesbania , Trifolium , Lupin
- D. Sesbania , Indigofera , Colchicum

Answer: C



Watch Video Solution

51. How many gametes are produced by a plant with genotype AABbCcDd ?

A. 4

B. 8

C. 16

D. 32

Answer: B



Watch Video Solution

52. In an ecosystem,

- (1) cycling of energy and nutrients is a coupled process.
- (2) cycling of energy is an independent process.
- (3) movement of energy is unidirectional.
- (4) both macro and micro consumers are necessary .

Choose the correct option for statement/s which complete / s the above statement.

A. only 1

B. only 3

C. 1 and 3 both

D. only 4

Answer: C



Watch Video Solution

53. Which statement is not true for the base ratio of DNA ?

- A. Base ratio is constant for a given species.
- B. Base ratio is variable for different species.
- C. Base ratio does not depend on age of organism .
- D. Base ratio is different for different tissues of organism.

Answer: D



[Watch Video Solution](#)

54. All of the following are found in a prokaryotic cell, except

- A. mRNA
- B. rRNA
- C. snRNA

D. Simultaneous transcription and translation.

Answer: C



Watch Video Solution

55. The size of VNTRs varies between

A. 0.2 to 0.4 kbp

B. 0.2 to 10 kbp

C. 0.1 to 20 kbp

D. 0.2 to 20 kbp

Answer: C



Watch Video Solution

56. The method in which recombinant DNA is directly injected into the nucleus of an animal cell using microneedle is known as

- A. Gene gun
- B. Microinjection
- C. Biologtics
- D. Direct DNA injection.

Answer: B



[Watch Video Solution](#)

57. In gel electrophoresis, differential mobility of DNA depends upon

- A. helical nature of DNA
- B. double - stranded nature of DNA

C. size of DNA

D. hydrogen bonding between bases

Answer: C



[Watch Video Solution](#)

58. The supernatant left after sedimentation of sewage water during primary treatment is known as

A. affluent

B. flocs

C. sludge

D. effluent

Answer: D



[Watch Video Solution](#)

59. Identify the incorrect statement regarding ecotone.

- A. It is the transition zone between two communities
- B. It contains few species from both the community
- C. The total number of species is less in the ecotone than in its adjoining communities.
- D. All of the above

Answer: C

60. Biological equilibrium is maintained with the help of

- A. producers and consumers
- B. consumers and decomposers
- C. photosynthesis and transpiration
- D. photosynthesis and respiration

Answer: D



Watch Video Solution

61. Choose CORRECT statements from the following.

(P) The western Ghats have greater amphibian species diversity than the Eastern Ghats

(Q) Diversity exist at all levels of biological organization ranging from macromolecules within cells to biomes.

(R) Rauwolfia vomitoria show the genetic variation in terms of

potency and concentration of the reserpine produced.

(S) Norway has a greater ecosystem diversity than India .

A. A and B only

B. B and D only

C. A,B and C only

D. A,B,C and D

Answer: C



Watch Video Solution

62. Biosphere reserves differ from national parks and wildlife sanctuaries because in the former

A. Human beings are not allowed to enter

B. People are an integral part of the system

C. Plants are paid greater attention than the animals

D. Living organisms are brought from all over the world and preserved for posterity

Answer: B



[Watch Video Solution](#)

63. The graph formed by plotting species richness against area for a wide variety of taxa (angiosperm plants, birds , bats , fresh water fishes , etc) turns out to be a

A. parabola

B. straight line

C. Rectangular hyperbola

D. Any of the above

Answer: C



Watch Video Solution

64. In which of the following tissue, cells of the tissue are enclosed in small cavities within the solid and pliable matrix secreted by them ?

- A. Dense connective tissue
- B. Loose connective tissue
- C. Bone
- D. Cartilage

Answer: D



Watch Video Solution

65. Which of the following is not a part of the respiratory system of *Periplaneta americana* ?

A. Trachea

B. Sclerites

C. Spiracles

D. Both 'B' and 'C'

Answer: B



[Watch Video Solution](#)

66. Harmful effects of air pollutant is dependent on

A. concentration of pollutants .

B. duration of exposure

C. type of organism

D. All of these

Answer: D



Watch Video Solution

67. A. The pollen grain is generally spherical measuring about 25 - 50 μ m in diameter.

B. In over 60% of angiosperms , pollen grains are shed at 2 celled stage.

Select the statement that holds true for the above statement .

A. Both 'A' and 'B' are correct

B. Only 'B' is correct

C. Only 'A' is correct

D. Both 'A' and 'B' are incorrect

Answer: B



[Watch Video Solution](#)

68. How many plants given below possesses unisexual flowers ?

Cucumber , maize, papaya , castor , Cycas, date palm.

A. 4

B. 5

C. 6

D. 3

Answer: C



[Watch Video Solution](#)

69. How many of the following features are applicable to the hormones ?

- i. The non-nutrient chemicals
- ii. Intracellular messengers
- iii. Released in blood or open spaces
- iv. Produced in trace amounts

A. None

B. One

C. Two

D. Three

Answer: C



Watch Video Solution

70. Choose the correct answer among the following options:

A Epinephrine

i Increase in muscle growth

V Testosterone

ii Decrease in blood pressure

C Glucagon

iii) Decrease in liver glycogen content

D Atrial natriuretic factor

iv Increase heart beat

A. A - ii, B - i , C - iii , D - iv

B. A - iv, B - i , C - iii , D - ii

C. A - i, B - ii , C - iii , D - iv

D. A - i, B - iv , C - ii , D - iii

Answer: B



Watch Video Solution

71. Which of the following incorrect about Ichthyophis ?

A. External fertilization

- B. Oviparous nature
- C. Two pairs of limbs
- D. Absence of exoskeleton

Answer: C

 [Watch Video Solution](#)

72. Radula and water vascular system are found in organism A and organism B respectively. Identify A and B.

- A. A - Locusta, B - Chiton
- B. A - Sea hare , B - Betta
- C. A - Tusk shell , B - Sea urchin
- D. A - Apis , B - Bombyx

Answer: C

 [Watch Video Solution](#)

73. The first site for observing chyme in the human gut is

A. buccal cavity

B. duodenum

C. stomach

D. colon

Answer: C

 [Watch Video Solution](#)

74. If Expiratory Reserve Volume = a , Residual Volume = B , Tidal Volume = C and Inspiratory Reserve Volume = D, then Functional Residual Capacity (FRC) is equal to

- A. $A + B$
- B. $A + B + C$
- C. $B + D$
- D. $A + B + D$

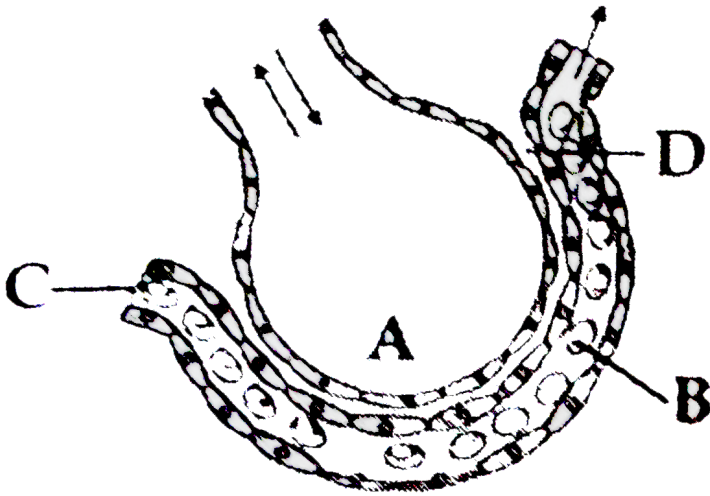
Answer: A



[Watch Video Solution](#)

75. The figure given below shows a small part of human lung where exchange of gases takes place. In which one of the option given below, the one part A, B, C or D is correctly identified along

with its functions



A. A - Alveolar cavity - main site of exchange of respiratory gases

B. D - Capillary wall - mainly made up of cuboidal epithelium

C. B - Red blood cell - transport of mainly carbaminohaemoglobin

D. C - Arterial capillary - passes oxygen to tissues

Answer: A



76. Identify the diagram and select the correct option:

A

Phagocytic WBC	Least abundant
3, 6	1

B

Phagocytic WBC	Least abundant
1, 3	1

C

Phagocytic WBC	Least abundant
1, 3	5

D

Phagocytic WBC	Least abundant
3, 4	2

A. Phagocytic WBC Least abundant
3,6 1

- | | | |
|----|----------------|----------------|
| B. | Phagocytic WBC | Least abundant |
| | 1,3 | 1 |
| C. | Phagocytic WBC | Least abundant |
| | 1,3 | 5 |
| D. | Phagocytic WBC | Least abundant |
| | 3,4 | 2 |

Answer: D



Watch Video Solution

77. Select the correct statement.

- A. Inter - atrial septum is a thick partition while atrio - ventricular partitions are thin.
- B. Mitral valve is having 2 fibrous non - muscular cusps.
- C. Size of heart is equivalent to the size of clenched fist.
- D. All of the above

Answer: C



Watch Video Solution

78. Select the option with the correct match.

Column - I

Column - II

A. GFR

1. 1100 mL/min.

B. Renal Blood flow

2. 125 mL/min.

C. Urine formation rate

3. 60 mL/hour

A. A - 2, B - 1, C - 3

B. A - 3, B - 2, C - 1

C. A - 3, B - 2, C - 1

D. A - 2, B - 3, C - 1

Answer: A



Watch Video Solution

79. At menopause there is rise in urinary excretion of

- A. Estrogen
- B. Progesterone
- C. MSH
- D. FSH

Answer: D



Watch Video Solution

80. Read the following statements -

P . Each female foetus ovary possess a couple of billion gamete mother cells.

Q. Spermatogenesis starts at puberty

R. In semen, at least 40% sperms should have a normal shape for

fertility.

How many of given statements are not true?

A. None

B. One

C. Two

D. Three

Answer: C



Watch Video Solution

81. Which of the following is not part of the vulva ?

A. Hymen

B. Cervix

C. Mons pubis

D. Labia majora

Answer: B



[Watch Video Solution](#)

82. The ART technique that is also termed as a test - tube baby programme:

A. ZIFT

B. IUI

C. IVF-ET

D. GIFT

Answer: C



[Watch Video Solution](#)

83. Select the correct statement.

- A. Pelvic inflammatory diseases doesn't occur in STDs.
- B. MTP was legalised in India is 1951.
- C. Saheli is an weekly non - steroidal oral contraceptive pill.
- D. Genital herpes is curable

Answer: C



Watch Video Solution

84. Vertebrate hearts and brains shows

- A. analogy
- B. atavism
- C. homology.

D. adaptive radiation

Answer: A



Watch Video Solution

85. In England , in 1920 (after industrialization) when a collection of moths was made, it was observed that:

- A. White winged moths were dominant
- B. Dark winged moths were dominant
- C. Dark winged moths became extinct
- D. Dark and white winged moths were equal in number

Answer: B



Watch Video Solution

86. Jawless fish probably evolved around

A. 350 mya

B. 500 mya

C. 320 mya

D. 200 mya

Answer: A



Watch Video Solution

87. Select the set of correct statements.

P. Metastasis is not the property of benign tumours

Q. Cancer cannot be induced by chemical agents.

R. Biopsy and histopathological studies are important tools for the diagnosis of cancer.

A. P,Q

B. Q,R

C. P,R

D. All

Answer: C



Watch Video Solution

88. Select the incorrect match.

A. Disease - Malaria , Causative organisms - A protozoan ,

Insect - Anopheles

B. Disease - Chikungunya, Causative organism - A bacteria,

Insect - Culex

C. Disease - Filariasis , Causative organism - An annelid , Insect

- Culex

D. Disease - Dengue, Causative organism - A virus, Insect -

Aedes

Answer: A



Watch Video Solution

89. Given leaves are of a plant which is a source of :



A. Heroin

B. Morphine

C. Marijuana

D. Cocaine.

Answer: C



Watch Video Solution

90. Select the mismatch.

A. Fungal disease - black rot of crucifers

B. Viral disease - Turnip mosaic

C. Variety of Wheat - Himgiri

D. Taichung Native -1 - Variety of rice from Taiwan.

Answer: A



Watch Video Solution

