



BIOLOGY

BOOKS - NTA MOCK TESTS

NTA NEET SET 88

Biology

1. Find out the correct Statement .

- A. Genetic makeup of the egg determines sex of the child in human
- B. Genetic makeup of the sperm determines sex of the child in human
- C. XO and XY type of sex determination is an example of female heterogeneity
- D. Mendel could trace a specific nuclear structure all through oogenesis of few insects

Answer: B



[Watch Video Solution](#)

2. During phylogenetic study, which is sequenced?

A. rRNA

B. mRNA

C. mitochondrial RNA

D. tRNA

Answer: A



[Watch Video Solution](#)

3. Angiosperms have dominated the land flora primarily by their

A. Property of producing large number of seeds

B. Nature of self pollination

C. Domestication by man

D. Power of adaptability in diverse habitat

Answer: D



[Watch Video Solution](#)

4. Mycorrhizal associations plays an important role in which of the following bio-geochemical cycle ?

A. Carbon cycle

B. Sulphur cycle

C. Nitrogen cycle

D. Phosphorus cycle

Answer: D



[Watch Video Solution](#)

5. Choose the correct statement regarding the catalytic converters.

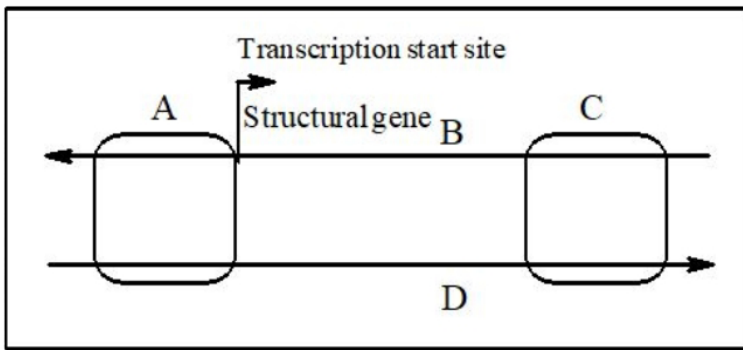
- A. Motor vehicles equipped with catalytic converter should use leaded petrol
- B. catalytic converter have expensive metals namely platinum - palladium and rhodium as catalyst
- C. catalytic converter help in reducing particulate matter
- D. As the exhaust passes through the catalytic converter nitrogen gas is converted into nitric oxide

Answer: B



[Watch Video Solution](#)

6. Refer to the given figure and consider the following statements regarding it .



I. A is present at the 5' end of the template strand .

II. B is antisense strand having $3' \rightarrow 5'$ polarity

III. C may have AT rich region or palindromic sequence

IV. D acts as a non-template strand

Select the option with the incorrect pair of Statements .

A. I and IV

B. II and III

C. I and III

D. III and IV

Answer: C

 [Watch Video Solution](#)

7. A gene is said to be dominant, if

- A. It is expressed only in heterozygous combination
- B. It is expressed only in homozygous combination
- C. It is expressed only in both homozygous heterozygous combination
- D. It is expressed only in second generation

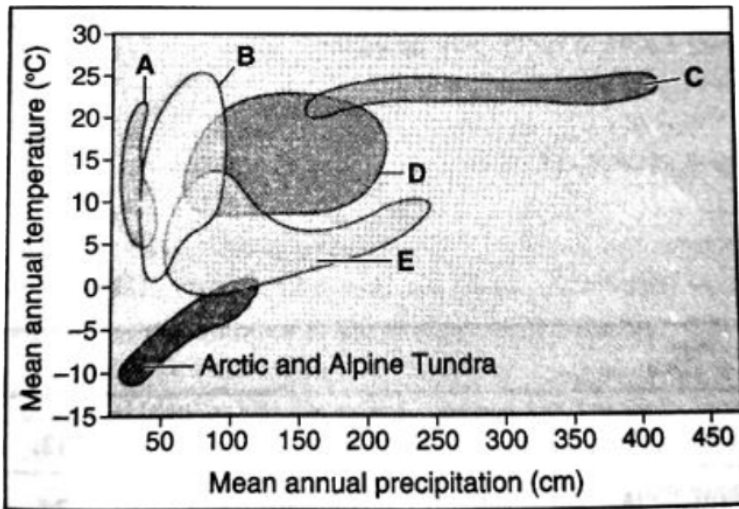
Answer: C



[Watch Video Solution](#)

8. Biome distribution with respect to annual temperature and precipitation is given below. Identify grassland and coniferous forest by

selecting the CORRECT option .



- A. A and B
- B. B and E
- C. B and D
- D. C and D

Answer: B



[Watch Video Solution](#)

9. A character in human beings is being controlled by 5 polygenes. The possible phenotypes are

A. 11

B. 10

C. 9

D. 25

Answer: A



[Watch Video Solution](#)

10. Purkinje cells are found in

A. cerebral cortex

B. cerebellar cortex

C. mammalian heart

D. Semicircular canal

Answer: B



Watch Video Solution

11. At the end of glycolysis, X is the net energy gain from one molecule of glucose via Y, but there is also energy stored in the form of Z. Identify X, Y and Z.

- | | | | |
|----|--------|---------------------------|--------------|
| A. | X | Y | Z |
| | $1ATP$ | Oxidative phosphorylation | $NADH + H^+$ |
| B. | X | Y | Z |
| | $2ATP$ | Oxidative phosphorylation | $NADH + H^+$ |
| C. | X | Y | Z |
| | $1ATP$ | Oxidative phosphorylation | $FADH + H^+$ |
| D. | X | Y | Z |
| | $2ATP$ | Oxidative phosphorylation | $FADH + H^+$ |

Answer: D



Watch Video Solution

12. David Tilman's experiment is related to ?

- A. Role of species diversity in ecosystem stability.
- B. Role of dominant species in stability of ecosystem.
- C. Role of human being in maintaining of ecosystem.
- D. More than one option is correct .

Answer: A

 [Watch Video Solution](#)

13. Consider the following statements and select the correct option that fills in the blanks.

I. Afood chain being with dead organic matter .

II. In xerach succession the series progress from conditions .

III Breking down of detritus into small particles by earthworm is called

A. *I* *II* *III*
 Grazing Xeric to mesic Catabolism

B. *I* *II* *III*
 Detritus Xeric to mesic Fragmentation

- | | | | |
|----|-----------|----------------|----------------|
| | <i>I</i> | <i>II</i> | <i>III</i> |
| C. | Detritus | Mesic to xeric | Mineralization |
| | <i>I</i> | <i>II</i> | <i>III</i> |
| D. | Parasitic | Mesic to xeric | Humification |

Answer: B

 [Watch Video Solution](#)

14. Which of the following plant species you would select for the production of bioethanol ?

- A. Zea mays
- B. Pongamia
- C. Jatropha
- D. Brassica

Answer: C

 [Watch Video Solution](#)

15. The non-sense codons are

- A. UUC ,UGG, UGA
- B. UGG ,UAA, UGA
- C. UUA ,UGA, UAG
- D. UAG ,UGA, UAA

Answer: D



Watch Video Solution

16. Ecotone is :

- A. A polluted area
- B. The bottom of a lake
- C. A zone of developing community
- D. A zone of transition between two communities

Answer: D



Watch Video Solution

17. Two traits that is starch Synthesis and shape of seed in pea is

- A. Two effects of same gene
- B. Two different effects of group of genes
- C. case of epistasis
- D. Two different effects of group of genes

Answer: A



Watch Video Solution

18. Leaf helps in vegetative propagation in

- A. Arabidopsis

B. Bryophyllum

C. Sensevieria

D. Brassica

Answer: B



[Watch Video Solution](#)

19. The medulla contains centre which control respiration , cardiovascular reflexes , and gastric secretions are related to

A. midbrain

B. forebrain

C. spinal chord

D. hindbrain

Answer: D



[Watch Video Solution](#)

20. Instantaneous source of energy is

- A. Proteose
- B. fructose
- C. sucrose
- D. glucose

Answer: D



[Watch Video Solution](#)

21. When heterozygous tall plants are self - pollinated , then tall and dwarf plants are obtained . This explains

- A. Law of dominance
- B. Law of segregation
- C. division in spores

D. independent assortment

Answer: B



[Watch Video Solution](#)

22. Which one of the following statements is totally wrong about greater biological diversity in tropics?

- A. Tropical latitude have remained relatively undisturbed for millions of years.
- B. Tropical environment is more or less constant and predictable.
- C. Soil here is very fertile.
- D. More solar energy is available.

Answer: C



[Watch Video Solution](#)

23. Which of the following is not a characteristic feature of the humus?

- A. It is a dark coloured, amorphous substance
- B. Highly resistant to microbial action
- C. It is reservoir of nutrients
- D. Cannot be degraded further

Answer: D



[Watch Video Solution](#)

24. mRNA directs building of protein through a sequence of

- A. Exons
- B. Anticodons
- C. Introns
- D. Codons

Answer: D



Watch Video Solution

25. Which is not a character of klinefelter's syndrome ?

- A. Trisomy
- B. Gynaecomastia
- C. Mental retardation
- D. Sterile individual

Answer: C



Watch Video Solution

26. The CORRECT order of duration of various phases of the cardiac cycle is

- A. Atrial systole > Ventricular diastole > Joint diastole >
Ventricular systole > Atrial diastole
- B. Atrial systole > Ventricular systole > Joint diastole >
Ventricular diastole > Atrial diastole
- C. Atrial diastole > Ventricular diastole > Joint diastole <
Ventricular diastole < Atrial diastole
- D. Joint diastole < Ventricular diastole < Atrial diastole

Answer: A

 [Watch Video Solution](#)

27. Hamburger's phenomenon involves

- A. the influx of chloride ions into erythrocytes in response to efflux of bicarbonate ions from erythrocytes

- B. efflux of chloride ions from erythrocytes in response to the influx bicarbonate ions from erythrocytes
- C. the influx of chloride ions into erythrocytes in response to the influx bicarbonate ions from erythrocytes
- D. efflux of chloride ions from erythrocytes in response to the efflux bicarbonate ions from erythrocytes

Answer: A



Watch Video Solution

28. Match the hormone of in the List I with function in the List-II and choose the correct option .

List-I (Hormone)	List-II (Function)
Vasopressin	1. Stimulation of uterine contraction
ACTH	2. Testosterone production
Oxytocin	3. Antidiuresis
Prolactin	4. Stimulation of milk production
ICSH	5. Adrenal cortex stimulation

A. A = 1, B = 3 , C = 4 , D = 2 , E = 5

B. A = 3, B = 5, C = 1, D = 4, E = 2

C. A = 3, B = 2, C = 1, D = 5 , E = 4

D. A = 4 , B = 5, C = 2, D = 1 , E = 3

Answer: B



Watch Video Solution

29. Match the following.

	Column I		Column II
(a)	Rheumatoid arthritis	(i)	Rapid spasm in muscle due to low Ca^{+2} in body fluid
(b)	Tetany	(ii)	Degeneration of skeletal muscle mostly due to a genetic disorder
(c)	Muscular dystrophy	(iii)	Autoimmune disorder affecting synovial membrane
(d)	Poliomyelitis	(iv)	A viral disease that weakens muscles

A. (a) - (iii) , (b) - (i) , (c) - (ii) , (d) - (iv)

B. (a) - (i) , (b) - (iii) , (c) - (ii) , (d) - (iv)

C. (a) - (iii) , (b) - (ii) , (c) - (i) , (d) - (iv)

D. (a) - (i) , (b) - (ii) , (c) - (iv) , (d) - (iii)

Answer: A



[Watch Video Solution](#)

30. Suspension of attenuated pathogen that stimulates antibody formation is:

A. antitoxin

B. Vaccine

C. antibiotic

D. Serum

Answer: B



[Watch Video Solution](#)

31. The secretions of the male sex accessory glands constitute the

- A. Seminal plasma
- B. Serum
- C. Semen
- D. Urine

Answer: A



[Watch Video Solution](#)

32. In the production of the test-tube baby ,

- A. fertilization is internal and development is external .
- B. fertilization is external and development is internal .
- C. fertilization and development external .
- D. fertilization and development are internal .

Answer: B



Watch Video Solution

33. Brunner 's glands are

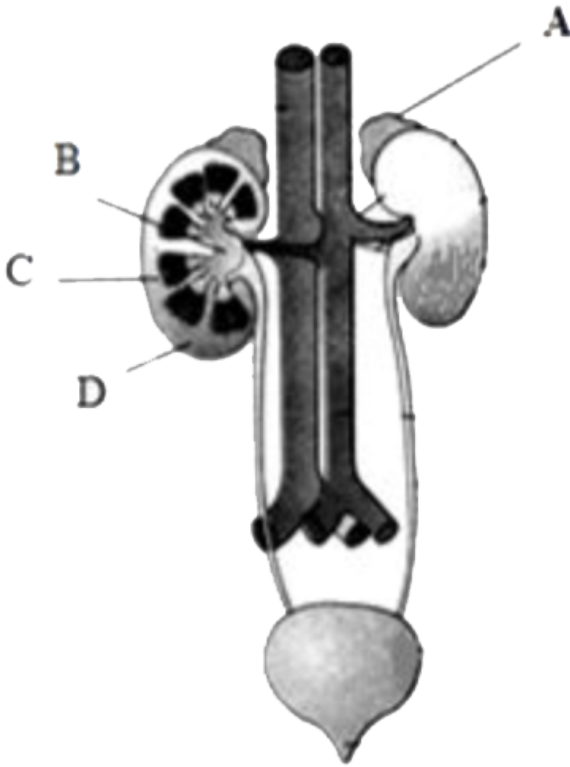
- A. Present in the ileum and is a secondary lymphatic tissue storing lymphocytes.
- B. Present in the duodenum and is a secondary lymphatic tissue storing lymphocytes.
- C. Present in the ileum and secrete an alkaline mucous fluid .
- D. Present in the duodenum and secrete an alkaline mucous fluid .

Answer: D



Watch Video Solution

34. Identify the INCORRECT statement about the labelled parts .



- A. A produces steroid hormone and catecholamines
- B. Part B is the funnel shape
- C. C is made up of pyramid and contains PCT and DCT
- D. D is shown extensions called columns of Bertini

Answer: C



35. Which of the following statements about conducting system of the heart is INCORRECT ?

I. Mass of nodal tissue seen in the lower-left corner of the right atrium is the sinoatrial node.

II. The nodal musculature can generate action potentials only in response to external stimuli .

III. The number of action potential that could be generated in a minute varies at different parts of the nodal system .

IV. The SAN can generate the maximum number of action potential , i.e., $80-85 \text{ min}^{-1}$

A. I, II , III and IV

B. I, II and IV

C. II, III and IV

D. I,II and III

Answer: B



Watch Video Solution

36. The option depicting the correct partial pressure (in mm Hg) is :

A.

pO_2 in alveolar air	pCO_2 deoxygenated blood	pO_2 in oxygenated blood
104	40	94

B.

pO_2 in alveolar air	pCO_2 deoxygenated blood	pO_2 in oxygenated blood
94	45	104

C.

pO_2 in alveolar air	pCO_2 deoxygenated blood	pO_2 in oxygenated blood
104	40	45

D.

pO_2 in alveolar air	pCO_2 deoxygenated blood	pO_2 in oxygenated blood
104	45	94

Answer: D



Watch Video Solution

37. Complete the analogy :

Ectoderm : Somatotropin :: Endoderm :

- A. Estrogen
- B. Thyroxine
- C. Epinephrine
- D. Cortisol

Answer: B



Watch Video Solution

38. Read the given Statements for skeletal muscles

- (i) Thin filaments are firmly attached to the Z - line .
- (ii) The light band is also called the I - band and contains mostly actin.
- (iii) A sarcomere is the functional unit of a myofibril between two adjacent A - bands .

(iv) The central part of the thick filament , not overlapped by the thin filament is called the H - zone

Which of these is/are CORRECT ?

A. i, ii, iii, iv

B. i, ii, iii

C. i, ii, iv

D. i, ii

Answer: C



[Watch Video Solution](#)

39. Symptoms of an allergy can be readily reduced by the use of all , except

A. histamine

B. cortisol

C. adrenaline

D. anti-histamine

Answer: A



Watch Video Solution

40. The scrotum help in maintaining the low temperature of the testes, necessary for

A. spermatogenesis .

B. Oogenesis

C. insemination.

D. Spermiation.

Answer: A



Watch Video Solution

41. Which of the following is a major component of oral contraceptive pills ?

- A. HCG
- B. LH
- C. FSH
- D. Progesterone

Answer: D



Watch Video Solution

42. Which of the following substances can be reabsorbed the DCT

- A. Na^+ , water and HCO_3^-
- B. Na^+ , H^+ , K^+ , water and HCO_3^-
- C. Na^+ , H^+ , water and HCO_3^- .
- D. Na^+ , H^+ , water and HCO_3^-

Answer: A



[Watch Video Solution](#)

43. Steroid hormones are similar in structure to

- A. tyrosine
- B. Cholesterol
- C. triglycerides
- D. coenzyme A

Answer: B



[Watch Video Solution](#)

44. An antibody molecule is represented as H_2L_2 . This implies that

- A. each antibody has four antigen-binding sites.

- B. each antibody molecule has four peptide chains , two small called light and two longer called heavy chains
- C. there are 2 interchain disulphide bonds .
- D. there are 2 intrachain disulphide bonds .

Answer: B

 [Watch Video Solution](#)

45. The Graafian follicle contains

- A. many oocytes
- B. many sperms
- C. a single oocyte
- D. the site for egg fertilisation

Answer: C

 [Watch Video Solution](#)

46. Which of the following is a nucleoside

- A. Adenylic acid
- B. Cytosine
- C. Uridine
- D. Thiamine

Answer: C



[Watch Video Solution](#)

47. Read the following statements and find out the INCORRECT statement

.

- A. In an animal cell, cytokines is achieved by the appearance of a furrow in the plasma membrane .

B. Furrow formation starts in the center of cell and grows outward to meet the existing lateral walls

C. Cell plate represents the middle lamella between the walls of two adjacent plant cells.

D. During cytokinesis, organelles like mitochondria and plastids get distributed between the two daughter cells.

Answer: B



Watch Video Solution

48. Read the statements given below with regard to the function performed by the Golgi apparatus.

I. Transport and chemically modified the material contained within it .

II. Secrete mucin in the respiratory tract.

III. Secrete mucin in the respiratory tract.

Which of the following is the CORRECT answer ?

A. I is wrong but II and III are correct

B. II is wrong but I and III are correct

C. II and III are wrong but I is correct

D. I, II and III are correct

Answer: D



Watch Video Solution

49. The processes which are collectively referred to as downstream processing are used for

A. identification and purification

B. separation and purification

C. selection and separation

D. identification and separation

Answer: B

 [Watch Video Solution](#)

50. Rosie' a transgenic cow is known to produce a type of milk which has all the following characteristics, except

- A. has protein content of 2.4 g/lit
- B. has human α -lactalbumin
- C. has more balanced diet than normal cow milk for babies
- D. has first produced in 2001

Answer: D

 [Watch Video Solution](#)

51. An antibody contains light and heavy chains interconnected by disulphide bonds. These disulphide bonds can be formed between

- A. serine, theonine

B. methionine, cysteine

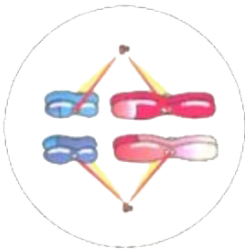
C. methionine, methionine

D. cysteine, cysteine

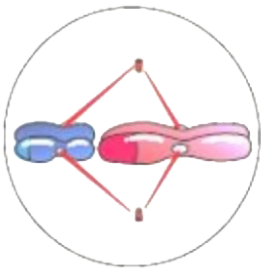
Answer: D

 [Watch Video Solution](#)

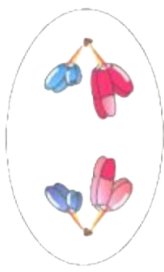
52. Choose the diagram which correctly depicts anaphase I



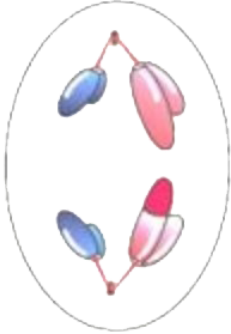
A.



B.



C.



D.

Answer: C

 [Watch Video Solution](#)

53. The special arrangement of the lipids in the cell membrane ensures that the

A. polar tail of saturated hydrocarbons is protected from the aqueous environment.

B. non-polar tail of unsaturated hydrocarbons is protected from the aqueous environment.

C. polar tail of unsaturated hydrocarbons is protected from the aqueous environment.

D. non-polar tail of saturated hydrocarbons is protected from the aqueous environment.

Answer: B



[Watch Video Solution](#)

54. The separated DNA fragment can be visualized only after staining the DNA with

A. ethidium sulphide

B. ethidium bromide

C. ethidium sulphide

D. ethidium bromide

Answer: C



[Watch Video Solution](#)

55. The first transgenic plant developed was a

- A. herbicide-resistant potato
- B. virus-resistant tomato
- C. antibiotic-resistant tobacco
- D. salt-tolerant maize

Answer: C



[Watch Video Solution](#)

56. Which of the following can't be included under glucan?

- A. Starch
- B. Cellulose
- C. Pectin
- D. Glycogen

Answer: C

 [Watch Video Solution](#)

57. Which of the following is not a connection between the plasma membrane of adjacent cells ?

- A. Desmosomes
- B. Tight junction
- C. Gap junctions
- D. Transverse junction

Answer: D

 [Watch Video Solution](#)

58. The slow ripening transgenic tomato was developed in USA by using

- A. antisense RNA technology
- B. ribozyme technology
- C. co-suppression silencing approach
- D. transgene silencing approach

Answer: A

 [Watch Video Solution](#)

59. Mark the INCORRECT statement regarding connective tissue .

- A. Most abundant and widely distributed body tissue
- B. Highly vascular
- C. Arise from the endoderm

D. Abundant intercellular matrix

Answer: C



Watch Video Solution

60. Which one provides correct sequence of events in origin of species according to Darwinism ?

1. Natural selection
2. Variations and their inheritance ?
3. Survival of fittest
4. Struggle for existence

A. 1,2,3,4

B. 2,3,1,4

C. 3,4,1,2

D. 4,2,3,1

Answer: D



[Watch Video Solution](#)

61. Amphibians share with reptiles all of the following characters except

- A. Ventral heart.
- B. indirect development.
- C. dioecious , oviparous .
- D. Poikilothermic .

Answer: B



[Watch Video Solution](#)

62. Select the incorrect statement .

- A. The Neanderthal man used hides to protect their body and buried their dead.

B. During ice age between 75,000-10,000 years ago modern Homo sapiens arose.

C. Homo erectus had a brain size around 650-800 cc.

D. Homo habilis were not carnivores .

Answer: C



Watch Video Solution

63. The organism where the adult shows pentaradial symmetry , while the larval forms shows biradial symmetry is

A. Apis.

B. Pleurobranchia.

C. Antedon.

D. Adamsia .

Answer: C

64. Which of the following is INCORRECT about a cockroach ?

- A. In females , a pair of spermatheca is present in the 6.. segment which opens into the genital chamber .
- B. Male genital pouch is present dorsal to anus and contain male genital pore and gonapophysis.
- C. The heart is differentiated into funnel shaped chambers with Ostia on either side .
- D. Blood vascular system is open type in which blood from sinuses enter heart through ostia and pumped anteriorly.

Answer: B

65. Hardy and Weinberg proposed a principal for

- A. Founder's effect .
- B. Sewell Wright effect .
- C. Genetic drift
- D. Non-evolving population .

Answer: D



[Watch Video Solution](#)

66. If the endosperm cells of an angiosperm seed are pentaploid , the such a seed may have been formed by which of the following parents ?

- A. Triploid female and diploid male.
- B. Diploid male and tetraploid female.
- C. Both parents are tetraploid.
- D. Triploid male and diploid female.

Answer: B



Watch Video Solution

67. Vascular bundle is enclosed within a well developed sclerechymatous sheath in

- A. monocot stem
- B. dicot stem
- C. monocot root
- D. dicot root

Answer: A



Watch Video Solution

68. The theory given by Schleiden and Schwann and modified by Virchow is not applicable to :

A. Bacteria

B. Fungus

C. Algae

D. Viruses

Answer: D



Watch Video Solution

69. An example of a seed with endosperm, perisperm and caruncle is

A. lily .

B. castor.

C. cotton.

D. coffee.

Answer: B



Watch Video Solution

70. In which of the following algae, motile colonies are found ?

- A. Volvox
- B. Spirogyra
- C. Ulothrix
- D. All of the above

Answer: A



[Watch Video Solution](#)

71. Select the incorrect statement about megaspore mother cell.

- A. It undergoes mitotic division
- B. It undergoes meiotic division.
- C. It is a large cell containing dense

D. Generally, a single functional megaspore is produced from it.

Answer: A



Watch Video Solution

72. Aquatic fern which is an excellent biofertilizer

A. Salvinia

B. Azolla

C. Marselia

D. Pteridium

Answer: B



Watch Video Solution

73. The concentration of the essential element below which plant growth is retarded is termed as

- A. Toxic concentration
- B. Super - optimum concentration
- C. Critical concentration
- D. Optimum concentration

Answer: C



[Watch Video Solution](#)

74. Which of the following statements incorrect about photorespiration ?

- A. In C_4 plants, photorespiration does not occur.
- B. In C_3 plants, some O_2 does not bind to *RuBisCO* , and hence CO_2 fixation is decreased.

C. In the photorespiratory pathway , there is neither synthesis of sugars, nor of ATP

D. The biological function of photorespiration is not known yet.

Answer: B



Watch Video Solution

75. Which of the following is not a function of cytokinin ?

A. Delay in senescence

B. Breaking seed dormancy

C. Promoting bud dormancy

D. Counteracting to apical dominance

Answer: C



Watch Video Solution

76. Grapes immersed in water would shrink if

- A. water containing a good amount of salts
- B. water containing starch
- C. water is cold
- D. water is hot.

Answer: A



[Watch Video Solution](#)

77. In tissue culture, callus can be induced to form shoot or root by altering the ratio of:

- A. Auxin to cytokinin
- B. Cytokinin to ethylene
- C. Auxin to gibberellin
- D. Gibberellin to cytokinin

Answer: A



Watch Video Solution

78. Sclereids are present in

- A. fruit walls of nuts.
- B. grit of guava and pear.
- C. seed coats of legumes.
- D. all of these

Answer: D



Watch Video Solution

79. Which of the following statement is true about fungi imperfecti

- A. They do not have sexual phase.

- B. They include species that prey only on nematodes.
- C. They include toadstools, puffballs and stinkhorns.
- D. They include *Aspergillus* , *Colletotrichum*, etc.

Answer: A



[Watch Video Solution](#)

80. Monocarpellary ovary, diadelphous androecium and marginal placentation is found in

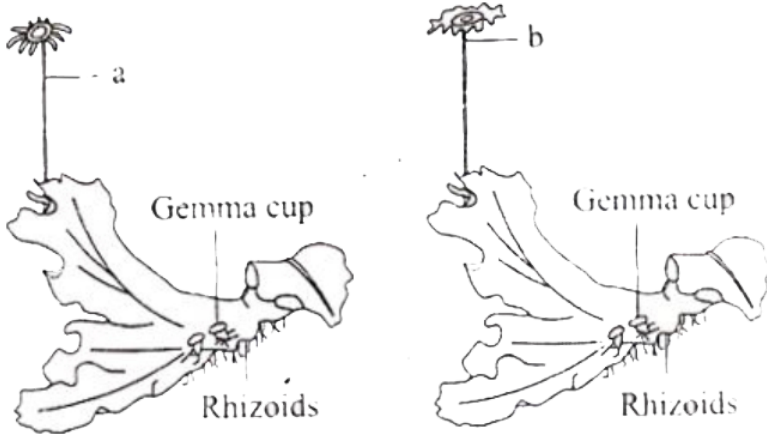
- A. Cruciferae.
- B. Solanaceae.
- C. Liliaceae.
- D. Papilionaceae.

Answer: D



[Watch Video Solution](#)

81. Recognise the figure and find out the CORRECT matching .



A. a - archegonia, b - antheridia

B. a - antheridia, b - archegonia

C. a - antheridophore , b - archegoniphore

D. a - archegoniphore , b - antheridiophore

Answer: D



Watch Video Solution

82. Maximum nutritional diversity is found in group

- A. Fungi
- B. Animalia
- C. Monera
- D. Plantae

Answer: C



Watch Video Solution

83. A parent with an S_1S_2 genotype exhibiting sporophytic self - incompatibility . Which of the following plant genotypes of the pollen grains of the same species it can fertilize ?

- A. S_1S_3
- B. S_2S_3
- C. S_3S_4

D. S_1S_4

Answer: C



Watch Video Solution

84. What is the purpose of synergids in an embryosaac ?

- A. They divide meiotically to produce antipodal cells.
- B. They contribute towards the formation of polar nuclei.
- C. Synergids function in the guidance of the pollen tube to enter the embryo sac.
- D. Synergids provide nourishment to the cells of embryosac.

Answer: C



Watch Video Solution

85. A good producer of citric acid is

- A. Clostridium
- B. Saccharomyces.
- C. Aspergillus.
- D. Pseudomonas

Answer: C



Watch Video Solution

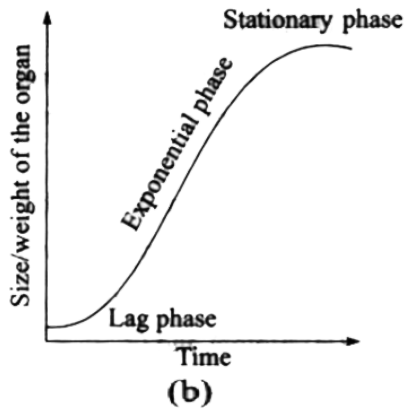
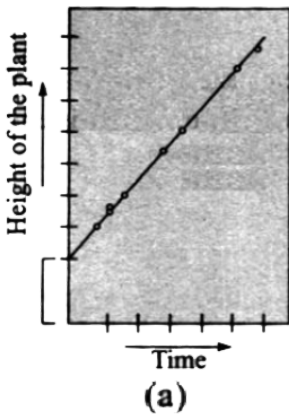
86. Which of the following is called the fret membrane ?

- A. Thylakoids
- B. Quantasomes
- C. Stromal lamellae
- D. Grana

Answer: C

 [Watch Video Solution](#)

87. Recognize the figure and find out the CORRECT labeling



A. a - linear curve in geometric growth , b - sigmoid or S - curve in arithmetic growth

B. a - linear curve in arithmetic growth ,b - sigmoid or S - curve in geometric growth

C. a - sigmoid or S - curve in geometric growth , b - linear curve in arithmetic growth

D. a - sigmoid or S - curve in arithmetic growth , b - linear curve in geometric growth

Answer: B

 [Watch Video Solution](#)

88. How many organism in the list given below are autotrophs
Lactobacillus, Nostoc, Chara, Nitrosomonas, Nitrobacter, Streptomyces,
Sacharomyces, Trypanosoma, Porphyra Wolfia

A. Four

B. Five

C. Six

D. Three

Answer: C

 Watch Video Solution

89. Identify the type of root given in the figure, from the given options .



(A)



(B)



(C)

A. A - Fusiform , radish , B - Napiform turmeric , C - Tuberous , Sweet potato

B. A - Conical, Turnip , B - Nodulated , sweet potato , C - Tuberous , Curcuma amada

C. A - Conical , carrot, B - Tuberous , sweet potato, C - Fasciculated , Dahlia

D. A - Napiform , carrot , b - Nodulated, Tamarind, C - Tuberous ,
turmeric

Answer: C

 [Watch Video Solution](#)

90. Male and female flowers are present on same plant in all of these ,
except:

A. Fig

B. Coconut

C. Maize

D. Date palm

Answer: D

 [Watch Video Solution](#)