

BIOLOGY

BOOKS - NTA MOCK TESTS

NTA NEET SET 90

Biology

1. The probable reason for the greyish appearance of cerebral cortex is

- A. Presence of bundles of axons in this region
- B. the cell body of neuron possess myelin sheath
- C. the cell bodies of neuron concentrate here

D. all of the above

Answer: C



Watch Video Solution

2. Select the incorrect statement for vexillary or papilionaceous aestivation ?

- A. Two lateral petals are found which are termed as wing.
- B. The standard petal is posterior .
- C. The largest petal is anterior and overlaps wing .
- D. Two smallest anterior petals are present known as keel.

Answer: D



Watch Video Solution

3. Select the number of plants having epipetalous stamens .

Moong , Sesbania , Lupin, Tomato , Muliathi , Soyabean , Petunia ,
Gram , Arhar , Tobacco , Tulip Aloe, Colchicum , Asparagus , Chills
, Sunhemp

A. 3

B. 6

C. 5

D. 4

Answer: D



Watch Video Solution

4. Theis considered as age old cottage industry andis the its real product .

- A. beekeeping , honey
- B. beekeeping , beeswax
- C. fisheries , shagreen
- D. fisheries , isinglass

Answer: B



[Watch Video Solution](#)

5. Which of pair is not having similar types of roots ?

- A. Mustard , Maize
- B. Mustard , Grass

C. Mustard , Bean

D. Jowar , wheat

Answer: A



Watch Video Solution

6. What is incorrect about the pteridophyta ?

A. Well differentiated with vascular tissue

B. Small and undifferentiated

C. Gametophytic phase

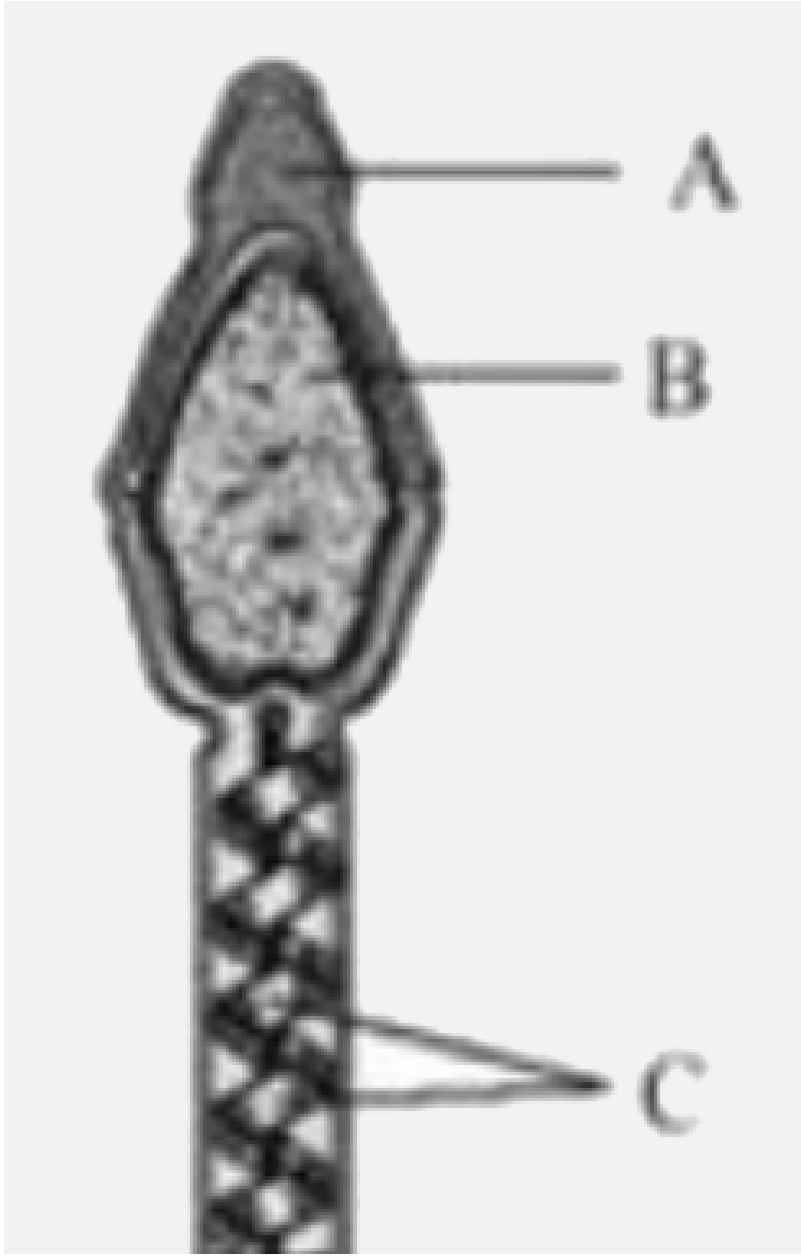
D. (No Suggestions) and free living

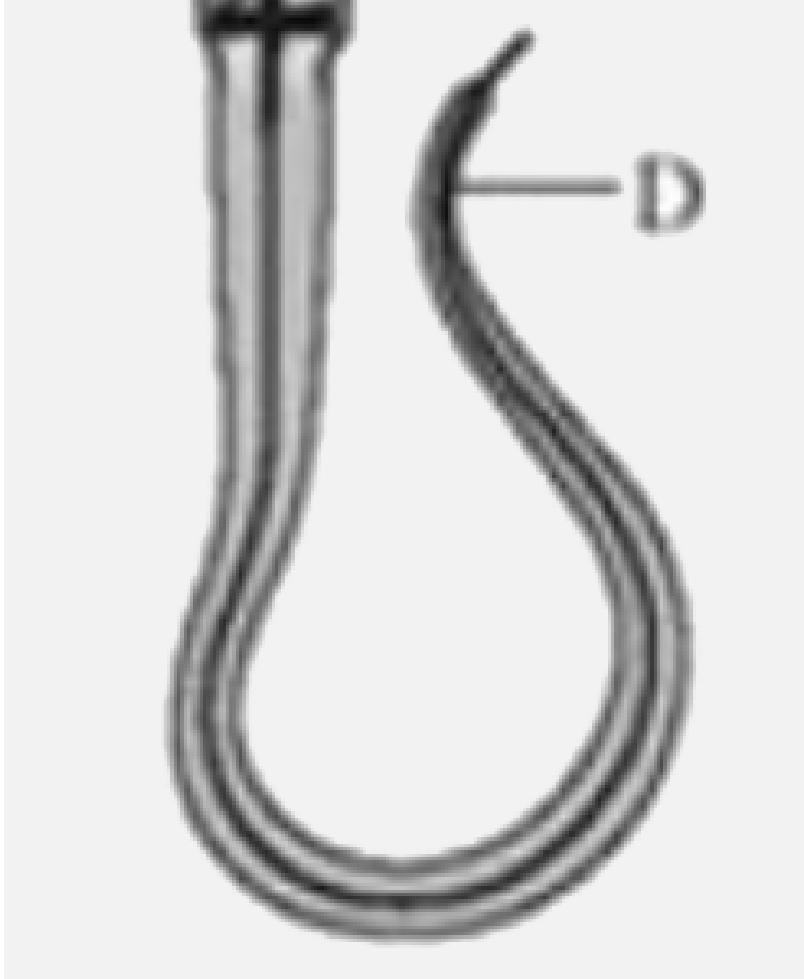
Answer: A



Watch Video Solution

7. Structure of human sperm is given . Identify the part which possess enzymes that help in fertilization.





A. B

B. C

C. A

D. D

Answer: C



Watch Video Solution

8. Which set of plants represents gymnosperms which grow in a temperate area with a branched stem and are having needle-like leaves to reduce the surface area ?

A. Cedrus , Eucalyptus

B. Cycas, wolffia

C. Cycas, Ginkgo

D. Pinus, Cedrus

Answer: D



Watch Video Solution

9. Which of the following is not a property of an ideal contraceptive ?

- A. User-friendly
- B. Should not given privacy to the user
- C. Effective
- D. Reversible

Answer: B



Watch Video Solution

10. Which of the following is not according to the Binomial nomenclature ?

- A. The first word represents the genus and the second represents species.
- B. The name are writing in Latin and are italicized
- C. Biological names can be written in any language
- D. If the name is hand written , it has to be underlined separately .

Answer: C



Watch Video Solution

11. Identify the foeto-maternal organ

- A. Embryo
- B. Uterus

C. Placenta

D. Blastocyst

Answer: C



Watch Video Solution

12. I. ER is also called the control center of the cell.

II. It modifies chemicals that are toxin to the cell.

III. SER is a major site for the synthesis of proteins.

IV. ER is a network of interconnected cisternae , tubules, and vesicles present in the endoplasm.

Which of the following statements is /are not true about the ER.

A. None

B. I and III

C. All except III

D. All

Answer: B



Watch Video Solution

13. In which stage does the embryo differentiate into trophoblast and an inner group of cells ?

A. Gastrula

B. Neural

C. Blastula

D. Morula

Answer: C



Watch Video Solution

14. Match the columns :-

Column - I		Column -II	
(A)	Telophase	(i)	Spindle grows between the centrosomes
(B)	Anaphase	(ii)	Formation of opposite spindle poles
(C)	Metaphase	(ii)	Sister chromatids are broken down
(D)	Prophase	(iv)	Reformation of ER

A. (A) – (i), (B) – (ii), (C) – (iii), (D) – (iv)

B. (A) – (iv), (B) – (iii), (C) – (ii), (D) – (i)

C. (A) – (ii), (B) – (iii), (C) – (iv), (D) – (i)

D. (A) – (iii), (B) – (iv), (C) – (i), (D) – (ii),

Answer: B



Watch Video Solution

15. The enzymes which convert glucose into ethyl alcohol is

A. Diastase

B. Maltase

C. Zymase

D. Invertase

Answer: C



Watch Video Solution

16. Select the correct match .

A. Pyrenoid - store protein

B. Liver - cellulose

C. Tuber - store lipids

D. Aleuroplast - store Protein

Answer: D



Watch Video Solution

17. Select the incorrect statement about MALT.

- A. It constitutes about 20% of lymphoid tissue in human body.
- B. It doesn't produces enzymes .
- C. it stands for Mucosa Associated Lymphoid Tissue.
- D. It is present in respiratory tract .

Answer: A



Watch Video Solution

18. Chlorophyceae appears grass green. due to the pigments

- A. Chlorophyll b, a
- B. Chlorophyll d, c
- C. Chlorophyll e
- D. Chlorophyll a, c

Answer: A



Watch Video Solution

19. The blood stem cells are related to which among the following options

- A. Liver

B. Spleen

C. Kidney

D. Bone marrow

Answer: D



Watch Video Solution

20. Statement I : Diplo-haplontic or haplo-diplontic life cycle is characterized by the existence of a sporophyte as well as a gametophyte.

Statement II : Fungi have a haplo-diplontic life cycle .

A. Both the statements are correct

B. Both the statements are wrong

C. Statement I is correct and Statement II is wrong

D. Statement II is correct and Statement I is wrong

Answer: C



Watch Video Solution

21. Azidothymidine (AZT) drug is useful in the treatment of

- A. an RNA containing the viral borne disease
- B. anaphylactic stock
- C. autoimmune disorders
- D. calcium deficiency disease

Answer: A



Watch Video Solution

22. Select the incorrect statement .

- A. 'Hb' is an example of quaternary structure of protein
- B. In the primary structure of protein , the left hand is C - terminal and the right hand is N-terminal.
- C. In protein or polypeptide , the amino acids are linked by peptide bond.
- D. Most of the enzyme are Protein in nature.

Answer: A



[Watch Video Solution](#)

23. Which type of natural selection in a population is rare in occurrence than others ?

A. Directional selection

B. Disruptive selection

C. Stabilizing selection

D. Balancing selection

Answer: B



Watch Video Solution

24. The haploid content of human DNA is

A. 1.3×10^9 bp

B. 3.3×10^9 bp

C. 3.3×10^6 bp

D. 5.3×10^6 bp

Answer: B



Watch Video Solution

25. Malonate is inhibited by succinate dehydrogenase. This is a type of

- A. non-competitive inhibition
- B. competitive inhibition
- C. negative feed back
- D. allosteric inhibition

Answer: B



Watch Video Solution

26. Tasmanian wolf resembles the placental wolf, this represents

- A. parallel evolution
- B. divergent evolution
- C. co-extinction
- D. atavism

Answer: A



Watch Video Solution

27. Select the incorrect statement.

- A. Vascular bundle of dicot stem said to be open
- B. Intrafascicular cambium is primary lateral meristem.

C. All tissues lying inside the vascular cambium are called bark.

D. In dicot stem endodermis is referred as starch sheath

Answer: C



Watch Video Solution

28. The shows adaptive radiation resulting from competition for food in a population.

A. Sickle cell anaemia

B. Peppered moth of England

C. DDT resistant mosquitoes

D. Darwin finches

Answer: D



Watch Video Solution

29. Which one of the following is an example of ex-situ conservation?

A. Seed bank

B. Zoo

C. Sanctuaries

D. Botanical Gardens

Answer: C



Watch Video Solution

30. Which of the following epithelium is most suitable for the quick exchange of materials through membranes via filtration or diffusion?

A. Simple squamous epithelium

B. Simple cuboidal epithelium

C. Simple columnar epithelium

D. All of the above

Answer: A



[Watch Video Solution](#)

31. Statement A: Polyblend is used for making roads.

Statement B: sanitary landfills are provided with a good solution for the management of garbage, especially in big cities.

Choose the correct option with respect to the statements above.

- A. Only statement A is correct
- B. Only statement B is correct
- C. Both statements A and B are correct
- D. Both statements A and B are incorrect.

Answer: A



Watch Video Solution

32. If a cell receives a signal to contract, then its neighbours are also stimulated to contract. This is due to the presence of-

- A. tight junctions
- B. sarcoplasm

C. desmosomes

D. intercalated disc

Answer: D



Watch Video Solution

33. Friends of the Arcata March organization are associated with which of the following?

A. Noise control

B. Integrated wastewater treatment

C. Hiroshima disaster

D. Terror of Bengal.

Answer: B

 [Watch Video Solution](#)

34. Which of the following animals is not a pair of poikilotherms?

- A. Rana, Trygon
- B. Labeo, Pteropus
- C. Pristis, Carcharodon
- D. Scoliodon, Naja

Answer: B

 [Watch Video Solution](#)

35. Which of the following is the first phase to occur in a sigmoid growth curve?

- A. Log phase
- B. Lag phase
- C. Exponential phase
- D. Deceleration phase

Answer: B



Watch Video Solution

36. In which of the following organisms the regulation of blood flow cannot be precisely regulated?

- A. Pheretima
- B. Mosquito
- C. Labeo

D. Cuttlefish

Answer: B



Watch Video Solution

37. Following are the roles of predation, except

- A. it helps in maintaining species diversity in a community.
- B. it is a potent force of organic evolution.
- C. predators act as 'conduits' of energy transfer across trophic levels.
- D. the population of prey is kept under control by the predators.

Answer: B



[Watch Video Solution](#)

38. Which factor/s is responsible for controlling the rate of decomposition?

- A. Climatic factor
- B. Chemical composition of detritus
- C. Both (A) and (B)
- D. Nature of detritivores

Answer: C



[Watch Video Solution](#)

39. In which part of the alimentary canal the negligible amount of absorption of substance take place?

A. mouth

B. oesophagus

C. stomach

D. small intestine

Answer: B



Watch Video Solution

40. The species composition that invades a barren area and drives the succession is called

A. a climax community

B. a pioneer community

C. the keystone species

D. the standing crop

Answer: B



Watch Video Solution

41. 23% amount of CO_2 is transported in the blood as

- A. bicarbonate ions
- B. carbaminohaemoglobin
- C. carboxyhaemoglobin
- D. carbonates

Answer: B



Watch Video Solution

42. Which of the following statements is incorrect?

- A. All animals do not depend directly on plants for their food needs.
- B. The death of the organism is the beginning of the grazing food chain.
- C. Those animals that depends on the primary carnivores for food are labeled as tertiary consumers.
- D. Primary producers in an aquatic ecosystem are various species like phytoplanktons, algae and higher plants.

Answer: B



Watch Video Solution

43. Select the correct match from the following.

- | | | |
|----|-------------|------------|
| A. | Aestivation | Example |
| | Imbricate | Gulmohar |
| B. | Aestivation | Example |
| | Vexillary | Aloe |
| C. | Aestivation | Example |
| | Valvate | Cassia |
| D. | Aestivation | Example |
| | Twisted | Calotropis |

Answer: A



Watch Video Solution

44. Carbonic anhydrase enzyme exists

- A. mainly in plasma
- B. only in plasma
- C. mainly in RBC

D. only in RBC

Answer: C



Watch Video Solution

45. Select the incorrect matching.

A. NACO → National AIDS Control Organisation

B. ELISA → Enzyme Linked Immunosorbent Assay

C. SCID → Stress Combined Immunodeficiency

D. PKU → Phenyl Ketonuria

Answer: C



Watch Video Solution

46. Which blood vessel ends in an organ other than the heart?

- A. Pulmonary vein
- B. Pulmonary artery
- C. Hepatic portal vein
- D. Hepatic vein

Answer: C



Watch Video Solution

47. Which of the following is the site for oxidative decarboxylation?

- A. Cytosol
- B. Outer membrane of mitochondria

C. Matrix of mitochondria

D. Both (A) and (C)

Answer: C



Watch Video Solution

48. The pericardial fluid is a protective fluid found between the two layers of the

A. endocardium

B. pericardium

C. myocardium

D. epicardium

Answer: B

 [Watch Video Solution](#)

49. A single turn of the citric acid cycle yields

A. $2FADH_2$, $2NADH_2$, $2GTP$

B. $1FADH_2$, $2NADH_2$, $1GTP$

C. $1FADH_2$, $3NADH_2$, $1GTP$

D. $1FADH_2$, $4NADH_2$, $1GTP$

Answer: C

 [Watch Video Solution](#)

50. What is incorrect about leghaemoglobin?

A. Synthesized by host cell

B. Oxygen scavenger

C. It makes nodules blue coloured.

D. It reduces the enzyme nitrogenase

Answer: C



Watch Video Solution

51. Which phenomenon is related to the epithem tissue in the tip of grass blades?

A. Exudation

B. Guttation

C. Transpiration

D. Bleeding

Answer: B



Watch Video Solution

52. Mitral valve is present between

- A. Right atria and right ventricle
- B. Left atria and left ventricle
- C. Right atria and left ventricle
- D. Left atria and right ventricle

Answer: B



Watch Video Solution

53. Identify the correct sequence of flow of electrons in the light reaction.

- A. PS I, plastoquinone, cytochromes, PS II, ferredoxin
- B. PS I, ferredoxin, PS II
- C. PS I, plastoquinone, cytochromes
- D. PS II, plastoquinone, cytochromes, PS I, ferredoxin

Answer: D



Watch Video Solution

54. Which set of ions/solutes is responsible for maintaining the gradient of the medullary interstitium?

- A. Urea and HCl

B. HCl and uric acid

C. Urea, uric acid and hydrogen ion

D. NaCl and urea

Answer: C



Watch Video Solution

55. In photosynthesis, the light-independent reactions take place in

A. Grana of chloroplast

B. interregnal lamella of chloroplast

C. Stroma of chloroplast

D. In the lumen of thylakoid

Answer: D



Watch Video Solution

56. Which of the following is not a function of angiotensin II?

- A. Vasoconstriction
- B. Increase the glomerular blood pressure
- C. Decreases the GFR
- D. Increases the blood pressure

Answer: C



Watch Video Solution

57. The cut flowers and vegetables can be kept fresh for a long period with the help of:

- A. Cytokinin
- B. Ethylene
- C. Auxin
- D. Gibberellin

Answer: A



[Watch Video Solution](#)

58. Maturation phase of cell is characterised by:

- A. Modification of protoplasm
- B. Thickening of walls

C. Both (A) and (B)

D. None of these

Answer: C



[Watch Video Solution](#)

59. Identify the incorrect pair.

A. Puccinia - Causative organism of wheat rust.

B. Aspergillus - Production of citric acid.

C. Ustilago - it is also known as rust fungi.

D. Neurospora - Extensively used in genetics.

Answer: C



[Watch Video Solution](#)

60. During the mechanism of vision, the cells which generate the first potential on stimulation by light is/are:

- A. Rods and cones
- B. Bipolar neurons
- C. Optic nerve
- D. Ganglion cells

Answer: A



[Watch Video Solution](#)

61. Gonyaulax belongs to :

- A. Dinoflagellates

B. Chrysophytes

C. Euglenoids

D. Algae

Answer: A



Watch Video Solution

62. Which of the following structure is centre for body temperature , thirst and appetite ?

A. Hypothalamus

B. Cerebral cortex

C. Thalamus

D. Piamater

Answer: A



Watch Video Solution

63. In a experiment , in pBR322 an alien DNA is introduced using sal I. The transformant will grow on

- A. Tetracycline
- B. Ampicillin
- C. Both (A) and (B)
- D. None of these

Answer: B



Watch Video Solution

64. Most suitable method of introducing alien DNA into a plant cell is

- A. Gene gun
- B. Microinjection
- C. Heat shock
- D. $CaCl_2$

Answer: A



[Watch Video Solution](#)

65. In a functional breast, milk is temporarily stored in:

- A. Mammary duct
- B. Mammary alveoli

C. Mammary ampullae

D. Lactiferous duct

Answer: B



Watch Video Solution

66. The nematode that infects the root of tobacco plants and causes a great reduction in its yield is:

A. *Ancylostoma duodenale*

B. *Meloidogyne incognita*

C. *Wuchereria bancrofti*

D. *Ascaris lumbricoides*

Answer: B

 [Watch Video Solution](#)

67. Choose the incorrect match .

- A. Primary messenger : Calcium ion
- B. Insulin : Peptide hormone
- C. Erythropoietin : Formation of RBC
- D. Aldosterone : Steroid

Answer: A

 [Watch Video Solution](#)

68. Which of the following is a mismatch ?

- A. Air (Prevention and Control of pollution) Act - 1984

B. Concept of joint Forest movement - Introduced by government in 1980

C. Ramesh Chandra Dagar - Worked on Integrated organic farming

D. Water (Prevention and Control of pollution) Act - 1986

Answer: D



Watch Video Solution

69. Gastrin and secretin are separated respectively by :

A. Stomach and small intestine

B. Stomach and stomach

C. Small intestine and small intestine

D. Small intestine and stomach

Answer: A



[Watch Video Solution](#)

70. How many types of gametes will be formed by genotype $XxYyZZ$?

A. Two

B. Four

C. Six

D. Eight

Answer: B



[Watch Video Solution](#)

71. Which of the following are dominant characters according to Mendel?

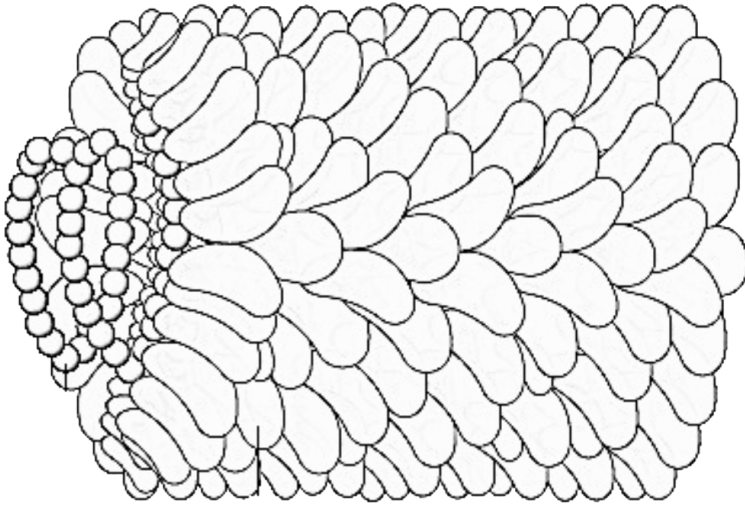
- A. Terminal flower and wrinkled seed
- B. White flower and yellow pod
- C. Tall plant and rounded seed
- D. Dwarf plant and yellow seed

Answer: C



Watch Video Solution

72. Identify the virus and select the correct statement about it.



- A. It is an animal virus
- B. Genetic material is single - stranded DNA.
- C. Genetic material is single - Stranded RNA.
- D. More than one option is correct.

Answer: C



Watch Video Solution

73. Select the incorrect statement about the methanogens.

- A. These belong to archaebacteria
- B. These live in marshy areas.
- C. It produces biogas which is purely methane
- D. These are found in the gut of ruminants

Answer: C



Watch Video Solution

74. In E.coli replication starts at :

- A. Replication fork
- B. Template strand

C. Promoter region

D. Origin of replication

Answer: D



Watch Video Solution

75. Lactose is the substrate for the enzyme β -galactosidase and it regulates switching on and off of the operon. Hence it is termed as

A. inducer

B. repressor

C. aporepressor

D. co - repressor

Answer: A



Watch Video Solution

76. Enzyme peptidyl transferase can be located in :

- A. Larger subunit of ribosome
- B. mRNA catalyses peptide bond formation
- C. Central part of transfer RNA
- D. Smaller subunit of ribosome

Answer: A



Watch Video Solution

77. The largest cell among the following is

- A. cell the morula.
- B. cell of the blastula
- C. cell of the gastrula.
- D. zygote.

Answer: D



Watch Video Solution

78. Select the incorrect statement.

- A. Typical angiospermic anther is tetrasporngiate.
- B. Usually one microspore mother cell gives rise to two functional microspore.
- C. Tapetal cells have two or more nuclei.

D. Sporopollenin in exine is one of the most resistant material.

Answer: B



[Watch Video Solution](#)

79. When the pollen tube enters the embryo sac, which of the following cell usually gets burst on its entry:

- A. Both synergids
- B. Central cell
- C. Antipodals
- D. One of the two synergids

Answer: D

 [Watch Video Solution](#)

80. Stalk with which ovules remain attached to placenta is called

- A. Funicle
- B. Integuments
- C. Hilum
- D. Chalaza

Answer: A

 [Watch Video Solution](#)

81. Select the incorrect statement.

- A. Apomixis is observed in grasses.

B. Mango is one seeded fruit.

C. Hard seed coat is meant for protection.

D. Most of the fruits are parthenocarpic fruits.

Answer: D



Watch Video Solution

82. The part of the embryonal axis that remains above the level of attachment of scutellum is

A. plumule

B. coleoptile.

C. hypocotyl.

D. epicotyl

Answer: D



Watch Video Solution

83. The set enzymes used clarification of fruit juices are "

- A. Cellulase and protease
- B. Protease and pectinase
- C. Pectinase and cellulase
- D. Hydrolase and protease

Answer: B



Watch Video Solution

84. Consider the following disorders:

Colourbliness, Thanlassemia, Klinefelter's syndrome , Myotonic dystrophy, Sickle cell anaemia, Phenylketonuria, Turner's syndrome

How many of the above disorders are Mendelian autosomal disorders ?

A. Six

B. Two

C. Five

D. Four

Answer: D



Watch Video Solution

85. The condition in which the number of chromosomes changes in multiples of the genome is

- A. Polyploidy
- B. Trisomy
- C. Monosomy
- D. Nullisomy

Answer: A



Watch Video Solution

86. Select the incorrect statement .

- A. Unto 900 restriction enzymes have been isolated from over 230 strains of bacteria.

B. In the year 1963, the two enzymes responsible for restricting the growth of bacteriophage in *Escherichia coli* were isolated.

C. Polymerase enzyme is one of the key tools for recombinant DNA technology.

D. EcoRI cut the DNA between bases G and A producing blunt ends, when the sequence GAATTC is present in the DNA.

Answer: D



Watch Video Solution

87. Which of the following xylem elements lack lignified cell wall?
?

A. Vessels

B. Xylem parenchyma

C. Xylem fibres

D. Both (A) and (B)

Answer: B



Watch Video Solution

88. The region of the biosphere reserve, where human activity is restricted is :

A. Restoration zone

B. Core zone

C. Buffer zone

D. Transition zone

Answer: B



Watch Video Solution

89. According to 'Rivet Popper hypothesis' , the popping of rivets means :

- A. Origin of species
- B. Extinction of species
- C. Environmental factors
- D. Replacement of one species by another

Answer: B



Watch Video Solution

90. Considered the following four conditions (A-D) and select the correct pair of them as adaptation to environment in desert lizards. The conditions

(a) Burrowing in soil to escape high temperature

(b) Losing heat rapidly from the body during high temperature

(c) Bask in sun when temperature is low

(d) Insulating body due to thick fatty dermis options

A. (iii) , (iv)

B. (i) , (iii)

C. (ii),(iii), (iv)

D. (i),(ii)

Answer: B



Watch Video Solution

