



# BIOLOGY

## BOOKS - NTA MOCK TESTS

### NTA NEET SET 91

#### Biology

1. How many post-meiotic meiotic division will be required to produce 100 zygotes in a flowering plants ?

A. 100

B. 125

C. 500

D. 250

**Answer: C**



**Watch Video Solution**

2. A gene has two alleles B and b. B is responsible for the expression of character x .  
b. is responsible for the expression of character

y. B. is completely dominant over b. Another gene A is epistatic on gene B. When A is in the dominant condition it suppress the expression of B and b and gives rise to character z. In recessive condition (allele a) allows expression of B and b. When an organism with genotype AaBb is crossed with another organism with genotype AbBb, the ratio of characters x,y and z seen in its offsprings is

A. 3: 4: 9

B. 3: 1: 12

C. 1: 12: 3

D. 9: 4: 3

**Answer: B**



**Watch Video Solution**

**3.** Read the following paragraph about an organism .

These organisms are unicellular eukaryotes .

Their body moves along decaying twigs and

leaves engulfing organic material . Under

suitable conditions, they form an aggregation

called plasmodium which may grow and spread

over several feet . During unfavorable conditions, the plasmodium differentiates and forma fruiting bodies bearing spores at their tips

Which of the following organism does it ?

- A. Protozoa
- B. Euglenoids
- C. Fungi
- D. Slime moulds

**Answer: D**



**Watch Video Solution**

4. Mark the correct option about prosthetic group and co-enzyme .

A. i

B. ii

C. iii

D. iv

**Answer: C**



**Watch Video Solution**

5. Blastocyst stage can be located in

A. Ampulla

B. Isthmus

C. Infundibulum

D. Uters

**Answer: D**



**Watch Video Solution**

6. Sacred groves are seen in sarguja , Chanda and Bastar areas in

A. Madhya Pradesh

B. Maharashtra

C. Meghalaya

D. Rajasthan

**Answer: A**



**Watch Video Solution**



7. Which of the following statements are correct ?

1. PCR is now routinely used to detect HIV in suspected AIDS patients.

2. A single - stranded DNA or RNA , tagged with a radioactive molecule (probe) is allowed to hybridize to its complementary DNA in a clone of cells followed by detection using autoradiography.

3. ELISA is based on the principle of antigen - antibody interaction.

4. Today transgenic models exist for many

human diseases such as cancer , cystic fibrosis ,  
rheumatoid arthritis, and Alzheimer's

A. 1 and 3

B. 2 and 4

C. 1,3 and 4

D. 1,2,3 and 4

**Answer: D**



**Watch Video Solution**

8. Which one of the following is a correct statement ?

A. Dominant trait can be expressed in homozygous condition only

B. Recessive condition is expressed in homozygous condition only

C. Dominant condition cannot be expressed in homozygous condition

D. All of the above

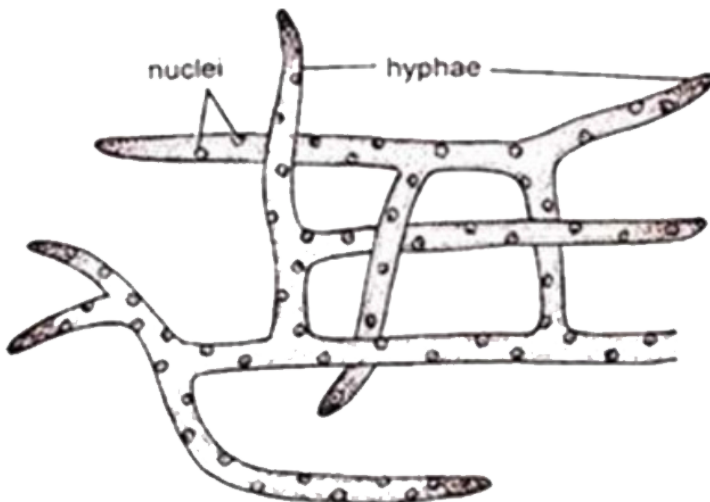
**Answer: B**



**Watch Video Solution**

**9.** Which of the following organisms will show a condition as depicted in the following diagram

?



A. Penicillium

B. Alternaria

C. Albugo

D. Ustilago

**Answer: C**



**Watch Video Solution**

**10.** In a pea plant , the genotype Rr will expressed as

A. round seed with large starch grain

B. round seed with intermediate starch grain

C. round seed with small starch grain

D. Wrinkled seed with small starch grain

**Answer: B**



**Watch Video Solution**

**11.** As each cell of the sporogenous tissue is capable of giving rise to .....

- A. a megaspore diad
- B. a megaspore tetrad
- C. a microspore diad
- D. a microspore tetrad

**Answer: D**



**Watch Video Solution**

**12.** Mendel law of independent assortment does not hold true for the genes that are located closely on

A. same chromosome

B. non-homologous chromosomes

C. X - chromosome

D. autosomes

**Answer: A**



**Watch Video Solution**

**13.** Area of retina in human eye containing only  
cone cells is called



A. Optic disc

B. tapetum lucidum

C. macula lutea

D. fovea centralis

**Answer: D**



**Watch Video Solution**

**14. Seedless fruits are produced from:**

A. Cleistogamous flowers

B. unpollinated ovary

C. unfertilized ovary

D. fertilized ovary

**Answer: C**



**Watch Video Solution**

**15.** The SAN generates an action potential which stimulates both the atria to undergo a simultaneous contraction and this is know as the .....

- A. the atrial diastole
- B. the atrial systole
- C. the Ventricular systole
- D. the Ventricular diastole

**Answer: B**



**Watch Video Solution**

**16.** Which of the following association fix nitrogen through non-nodulation?

A. Roots of leguminous plants associated with Rhizobium.

B. Coralloid roots of cycas in association with Anabaena.

C. Both a and b

D. None

**Answer: B**



**Watch Video Solution**

17. Osmoreceptors in the body are activated by changes in

- A. blood volume
- B. body fluid volume
- C. ionic concentration
- D. all of these

**Answer: D**



**Watch Video Solution**

**18.** Read the following statements:

- i. 51 % of carbon is found dissolved in oceans.
- ii. The oceanic reservoir regulated the amount of carbon dioxide in the atmosphere.
- iii. Some amount of the fixed carbon is lost to sediments and removed from circulation.
- iv. Carbon constituents 49% of the dry weight of an organism and it is next only to water.

A. i and ii are true but iii and iv are false

B. i and iii are true but ii and iv are false

C. ii and iii are true but i and iv are false

D. i and iv are correct but ii and ii are false

**Answer: C**



**Watch Video Solution**

**19.** Lyases catalyze through

A. removal of groups from substrates by mechanisms other than hydrolysis leaving double bonds .

B. linking together of two compounds

C. transfer of a group , other than hydrogen

, between a pair of substrates

D. inter-conversion of optical, geometric or

positional isomers .

**Answer: A**



**Watch Video Solution**

**20.** Species having exclusive areas of the geographic distribution are



A. sibling species

B. morphospecies

C. sympatric species

D. allopathic species

**Answer: D**



**Watch Video Solution**

**21. Which Statement among the following are CORRECT ?**

I. The upper surface of the tongue has small

projections called papillae, some of which bear taste buds.

II. The serosa is the innermost layer of the alimentary canal and is made up of a thin mesothelium ( epithelium of visceral organs ) with some connective tissue .

III. The liver is the largest glands of the body weighing about 4.3 to 5 kg in an adult human.

IV. During the process of digestion, the stomach stores the food for 2 - 3 hours.

A. I and III

B. II and IV

C. I and IV

D. II and III

**Answer: C**



**Watch Video Solution**

**22.** The extra volume of air that can be inspired forcibly after normal inspiration is

A. Tidal volume

B. Inspiratory Reserve Volume

C. Vital capacity

D. Inspiratory Capacity

**Answer: D**



**Watch Video Solution**

**23.** Which of the following steps is associated with ATP formation (substrate level phosphorylation)?

A. Succinyl CoA - succinic acid

B. 1,3 diPGA  $\rightarrow$  3 PGA

C. PEP  $\rightarrow$  Pyruvate

D. All of these

**Answer: D**



**Watch Video Solution**

**24.** Industrial melanism in peppered moth occurred due to natural selection . The significant reason for this is

A. the light coloured white moths could not be noticed by predatory birds after deposition of soots on bark of trees

B. mutation in light coloured moths due to increase in industrial pollution

C. advantageous selection of black moths on tree in polluted areas, resulting in increase population of black moths

D. advantageous selection of white moths on tree in polluted areas, resulting in

increased population of white moths

**Answer: C**



**Watch Video Solution**

25. In general , species diversity ...ae we move away from the equator towards the poles and with very few exceptions, tropics harbor ... species than temperature or polar areas.

A. a -increases , b-less

B. a -decreases , b-more

C. a -increases , b-more

D. a -decreases, b- less

**Answer: B**



**Watch Video Solution**

**26.** In the year 1963, the two enzymes responsible for restricting the growth of bacteriophage in *E. coli* were isolated. One of these added methyl groups to DNA, while the other cut DNA. The latter was called



A. Ligase, Restriction endonuclease

B. Helicases , Restriction endonuclease

C. Methylase Restriction endonuclease

D. DNA polymerase , Restriction  
endonuclease

**Answer: C**



**Watch Video Solution**

**27. Colchicine is obtained from :-**

A. rhizome of *Colchicum autumnal*

B. corms of *Colchicum autumnale*

C. bulbs of *Colchicum autumnal*

D. root tubers of *Colchicum autumnal*

**Answer: B**



**Watch Video Solution**

**28.** Find out the **MISMATCHED** pair.

A. Haemophilia - Sex linked recessive

B. Cystic fibrosis - Autosomal dominant

C. Down's syndrome - Trisomy 21

D. Turner's syndrome - X-linked

**Answer: B**



**Watch Video Solution**

**29.** The "nervous system " of Hydra consists of

A. Polarized nerve cells

B. nonpolarized nerve cells

C. well defined nerves

D. ganglionated nerve cord

**Answer: B**



**Watch Video Solution**

**30.** Number of microsporangia in a dithecous anther is:

A. Only one

B. Two

C. Four

D. Many

**Answer: C**



**Watch Video Solution**

**31.** Column I list the parts of the human brain and column II lists the functions. Match the two columns and identify y CORRECT choice from

those given.

Column I	Column II
A. Cerebrum	p. Controls the pituitary
B. Cerebellum	q. Controls vision and hearing
C. Hypothalamus	r. Controls the rate of heartbeat
D. Midbrain	s. Seat of intelligence
	t. Maintains body posture

A.  $A = t, B = s, C = q, D = p$

B.  $A = s, B = t, C = q, D = p$

C.  $A = t, B = s, C = p, D = q$

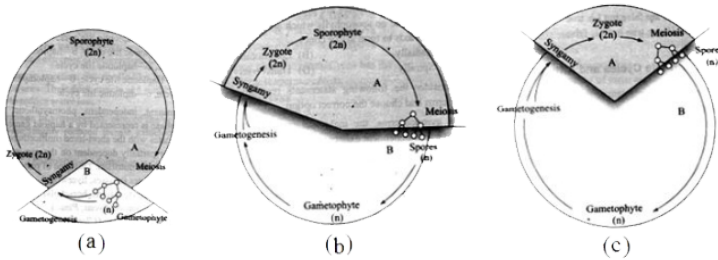
D.  $A = s, B = t, C = p, D = q$

**Answer: D**



**Watch Video Solution**

32. Recognise the figure and find out the  
CORRECT matching :



A. a-Haplontic life cycle , b-diplontic life cycle  
, c-haplodiplontic life cycle

B. a-Haplodiplontic life cycle , b-diplontic life  
cycle , c-haplontic life cycle

C. a - Diplontic life cycle , b - haplodiplontic  
life cycle, c- haplontic life cycle

D. a - Haplontic life cycle , b - haplodiplontic  
life cycle , c - diplontic life cycle

**Answer: C**



**Watch Video Solution**

**33. What is FALSE ?**



A. Menarche is the beginning of menstruation.

B. menstruation. is the shedding of the endometrial lining.

C. Menopause occurs at the beginning of puberty .

D. Ovulation occurs under a high titre of LH.

**Answer: C**



**Watch Video Solution**

34. Naked (wall-less) , multinucleated and saprophytic organisms are grouped as .....

A. monerans

B. Protists

C. euglenoids

D. slime moulds

**Answer: D**



**Watch Video Solution**

**35.** Where will you look for the gametes of a malaria parasite ?

A. Red blood corpuscles of humans suffering from malaria

B. Salivary of infected female mosquito

C. Salivary glands of freshly moulted infected female mosquito

D. Gut of infected female mosquito that can act as vector for malaria parasite

**Answer: D**



**Watch Video Solution**

**36.** If in a photosynthetic system  $H_2O^{18}$  type is provided, what will be the type of oxygen released in the process ?

A.  $O^{18}$

B.  $O^{16}$

C. normal  $O_2$

D.  $O^{14}$

**Answer: A**



**Watch Video Solution**

**37.** Glomerular area of adrenal cortex is mainly responsible for

- A. maintaining glucose levels
- B. carbohydrate metabolism
- C. water and electrolyte balance
- D. steroid and hormone secretion

**Answer: C**



**Watch Video Solution**

**38.** In a mature dicot stem which has undergone secondary growth, youngest layer of secondary xylem is situated

- A. in between pith and primary xylem
- B. just outside the vascular cambium
- C. just inner to the Vascular cambium
- D. just inner to the phellogen

**Answer: C**



**Watch Video Solution**

**39. 8th , 9th and 10th pair of ribs**

A. articulate with the sternum anteriorly

B. articulate with 7th rib with the help of a  
hyaline cartilage

C. articulate with 7th rib with the help of a  
fibrocartilage

D. do not articulate anteriorly

**Answer: B**



**Watch Video Solution**

**40.** In unilocular ovary with a single ovule the placentation is

A. axile

B. marginal

C. basal



D. free central

**Answer: C**



**Watch Video Solution**

**41. Which of the following is/are called morning after pills**

A. i-pill

B. unwanted 72

C. Pill-72

D. All of these

**Answer: D**



**Watch Video Solution**

**42.** Ribosomes are CORRECTLY characterized by which of the following statements ?

A. They are composed entirely of r-RNA

B. They are composed of two equal subunits.

C. They differ in response to antibiotics depending on whether they are eukaryotic or prokaryotic in origin .

D. They are composed of three equal subunits .

**Answer: C**



**Watch Video Solution**

**43.** Which one of the following is a WRONG statements ?

A. Ozone in the upper part of the atmosphere is harmful to animals.

B. The greenhouse effect is a natural phenomenon.

C. Eutrophication is a natural phenomenon in freshwater bodies.

D. Most of the forests have been lost in tropical areas.

**Answer: A**



**Watch Video Solution**

**44.** Match Column I with column II and select the CORRECT option from the codes given below.

Column I		Column II	
(i)	Nitrogen	(a)	Interveinal chlorosis
(ii)	Iron	(b)	Rossetting of leaves
(iii)	Boron	(c)	Wrinkling of cereal grains
(iv)	Chlorine	(d)	Bronze colour in leaves

A. (i)- a , (ii)- d , (iii)- c, (iv)- b

B. (i)- c , (ii)- a , (iii)- b, (iv)- d

C. (i)- a , (ii)- c , (iii)- d, (iv)- b

D. (i)- d , (ii)- a , (iii)- b, (iv)- c

**Answer: B**



**Watch Video Solution**

**45.** A virus with ssDNA is discovered. Its DNA is amplified by running 19 cycles of PCR. How many dsDNA strand will be formed at the end ?

A. 10

B. 512

C. 1024

D. 102

**Answer: B**



**Watch Video Solution**

**46.** In sickle-cell anaemia , the shape of RBCs under oxygen tension becomes.....

- A. biconcave disc like
- B. elongated and curved
- C. circular
- D. spherical

**Answer: B**



**Watch Video Solution**

**47.** Increase in temperature by  $2^{\circ}C$  scrotum would

- A. reduce the fertility by impairment of spermatogenesis
- B. have no effect on fertility
- C. reduces blood supply to scrotum
- D. pull the testes towards abdomen



**Answer: A**



**Watch Video Solution**

**48.** Virus-mediated transfer of DNA from one bacterium to another is called

A. transduction

B. transformation

C. transversion

D. translation

**Answer: A**



**Watch Video Solution**

**49.** Which of these symptoms is associated with the hyposecretion of thyroid hormones ?

A. Decreased pulse rate

B. Hypertension

C. Diarrhoea

D. Weight loss with a normal or increased food intake

**Answer: A**



**Watch Video Solution**

**50.** The suction pressure of the cell is

- A. equal to wall pressure
- B. equal to turgor pressure
- C. equal to DPD
- D. Osmotic pressure

**Answer: C**

 [Watch Video Solution](#)

51. All of the following can be found in the female cockroach , except

- A. fat body
- B. gonapophyses
- C. anal styles
- D. vestibulum

**Answer: C**

 [Watch Video Solution](#)

52. During which phase(s) of cell cycle amount of DNA in a cell remains at 4C level if the initial amount is denoted as 2C

A.  $G_0$  and  $G_1$

B.  $G_1$  and  $S$

C. Only  $G_2$

D.  $G_2$  and M

**Answer: D**



**Watch Video Solution**

**53.** Select the disease which is NOT an auto - immune disorder .

- A. Myasthenia gravis
- B. Rheumatoid arthritis
- C. Muscular dystrophy
- D. Grave's disease

**Answer: C**



**Watch Video Solution**

**54.** Match Column - I with Column - II and Select the CORRECT option from the codes given below .

Column I		Column II	
1	Monera	(i)	Chlamydomonas Solanum
2	Protista	(ii)	Bacillus, Ocillatoria
3	Fungi	(iii)	Euglena, Trypanosome
4	Plantae	(iv)	Mucor, Penicillium
5	Animalia	(v)	Felis , Panthera

A. 1 - (iii) , 2 - (ii) , 3 - (iv) , 4 - (i) , 5 - (v)

B. 1 - (ii) , 2 - (iii) , 3 - (iv) , 4 - (i) , 5 - (v)

C. 1 - (ii) , 2 - (iii) , 3 - (i) , 4 - (iv) , 5 - (v)

D. 1 - (ii) , 2 - (v) , 3 - (i) , 4 - (iv) , 5 - (iii)

**Answer: B**



**Watch Video Solution**

**55. Single step large mutation is called**

A. speciation

B. saltation

C. genetic drift

D. Sewall Wright effect

**Answer: B**



56. Which of the following physiological effects is caused in plants by gibberellic acid ?

- A. Shortening of genetically tall plants
- B. Elongation of genetically dwarf plants
- C. Rooting in stem cuttings
- D. Yellowing of young leaves

**Answer: B**

57. Onion is propagated through its

A. tubers

B. bulb

C. seeds

D. rhizomes

**Answer: B**



**Watch Video Solution**

58. Match the organisms with their excretory organs:

Organism	Excretory organ
<i>a.</i> Earthworm	<i>p.</i> Protonephridia
<i>b.</i> Cockroach	<i>q.</i> Green glands
<i>c.</i> Rotifers	<i>r.</i> Nephridia
<i>d.</i> Prawn	<i>s.</i> Malpighian tubule

A. a-q,b-p,c-r,d-s

B. a-r,b-q,c-s,d-p

C. a-r,b-s,c-p,d-q

D. a-r,b-s,c-q,d-p

**Answer: C**



Watch Video Solution

59. Which of the following pairs consists of false fruits ?

- A. Apple and Cashewnut
- B. Pineapple and Mulberry
- C. Pear and Strawberry
- D. All the above

**Answer: D**



[Watch Video Solution](#)

**60.** Which of the following can be used as a bioweapon in wars ?

A. A pathogen

B. Toxin from a pathogen

C. A deliver system for the bioweapon agent

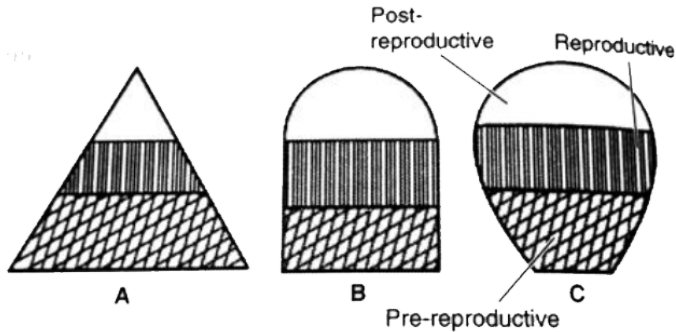
D. All of the above

**Answer: D**



**Watch Video Solution**

61. The following diagrams are the age pyramids of different populations.



Select the CORRECT statement regarding the above.

A. A - It is a pyramid - shaped age pyramid indicating decreasing population growth.

B. B - It is a bell - shaped pyramid indicating stable population.

C. C - It is an urn - shaped pyramid indicating increased populating growth.

D. All statement are correct.

**Answer: B**



**Watch Video Solution**

**62.** Primates called Dryopithecus and Ramapithecus existed nearly:

A. 5 mya

B. 15 mya

C. 1 mya

D. 2 mya

**Answer: B**



**Watch Video Solution**

**63.** Which of the following is closest to the plasma membrane ?



A. Tonoplast

B. Middle lamella

C. Primary cell wall

D. Secondary cell wall

**Answer: D**



**Watch Video Solution**

**64.** Which of the following is correct about *Atropa belladonna* ?

- A. Family Plant type  
Solanaceae Ornamental plant
- B. Family Plant type  
Solanaceae Hallucinogenic plant
- C. Family Plant type  
Fabaceae Immunomodulator plant
- D. Family Plant type  
Fabaceae Depressant plant

**Answer: B**



**Watch Video Solution**

**65.** How many of the following statement are TRUE ?

(i) 6 turns of B - DNA has 120 nucleotides.

(ii) In prokaryotes , gene regulation generally occurs at transcriptional level.

(iii) Operon concept was given by Jacob and Monod while working on yeast.

(iv) The enzyme required for peptide chain synthesis is a ribozyme in bacteria and lies in 50S subunit.

(v) A small segment of RNA synthesized during replication of DNA is "Okazaki segment".

A. 2

B. 3

C. 1

D. 5

**Answer: B**



**Watch Video Solution**

**66.** Find out the CORRECT Statement.

A. Ciliated epithelium present in convoluted parts of nephric tubule absorb only has striated involuntary muscles.

B. Haversian canals are interconnected by canaliculi and lacunae.

C. Abdominal wall in our body has striated involuntary muscles.

D. Elastic cartilage is present in the tip of our nose

**Answer: D**



**Watch Video Solution**

**67.** The main cause of extinction of species from tropical area is :

A. Over - exploitation

B. Deforestation

C. Alien species invasion

D. More than one option is correct

**Answer: B**



**Watch Video Solution**

**68.** Which one of the following statements about all the four of spongilla, leech, dolphin and penguin is correct ?

A. Penguin is homoeothermic while the remaining three are poikilothermic.

B. Leech is a freshwater form while all others are marine.

C. Spongilla has special collared cells called choanocytes, not found in the remaining three.

D. All of them shows bilateral symmetry.

**Answer: C**



**Watch Video Solution**

**69.** After the reduction in BOD of waste water, the bacterial flocs are allowed to sediment. This sediment is called

A. Primary sludge

B. Activated sludge



C. Effluent

D. Grit

**Answer: B**



**Watch Video Solution**

**70.** Read the following statements and find out the incorrect statements.

a. Mons pubis is a cushion of fatty tissue covered by skin and pubic hair.

b. The labia minora are fleshy folds of tissue,

which extend down from the mons pubis and surround the vaginal opening.

c. The opening of the vagina is often covered partially by a membrane called hymen.

d. The clitoris lies at the upper junction of two labia majora above the urethral opening .

e. The presence or absence of hymen is a reliable indicator of virginity or sexual experience.

A. b,d and e

B. b,c and d

C. b,c and d

D. a, c and e

**Answer: A**



**Watch Video Solution**

**71. Fill in the blanks**

Qualitative comparisons between the growth of the living system can be in two ways:

(i) Measurement and the comparison of total growth per unit time is called the ..a...growth rate.

(ii) The growth of the given system per unit

time expressed on a common basis, eg. per unit

initial parameter is called...b.... growth rate

A. a - absolute , b - relative

B. a - relative , b - absolute

C. a - arithmetic , b - geometric

D. a - geometric , b - arithmetic

**Answer: A**



**Watch Video Solution**

72. Which of the following gas in the atmosphere is not considered as a pollutant ?

A. Hydrocarbons

B. Carbon dioxide

C. Carbon monoxide

D. Sulphur dioxide

**Answer: B**



**Watch Video Solution**

**73.** A protozoan reproduces by binary fission.

What will be the number of protozoans in its population after six generations ?

A. 64

B. 128

C. 24

D. 32

**Answer: A**



**Watch Video Solution**

74. Which of the following is not correct about acetabulum ?

A. It is a part of pectoral girdle.

B. It articulates with the head of femur to form the hip joint.

C. It is formed by the fusion of ilium, ischium and pubis.

D. It is a part of pelvic girdle.

**Answer: A**





Watch Video Solution

75. The rate at which light energy is converted into chemical energy of organic molecules, is the ecosystem's

- A. Net primary productivity
- B. Gross primary productivity
- C. Net secondary productivity
- D. Gross secondary productivity

**Answer: B**







**76.** Which of the following statement is true for lymph ?

- A. All components of blood except WBCs and serum
- B. All components of blood except RBCs and some proteins
- C. RBCs, WBCs and plasma
- D. RBCs proteins and platelets

**Answer: B**



**Watch Video Solution**

**77. Match column -I with column -II and select the CORRECT option from codes given below**

	Column-I		Column-II
((1))	Meristem	(i)	Photosynthesis, storage
(2)	Parenchyma	(ii)	Living mechanical tissue
((3))	Collenchyma	(iii)	Actively dividing cells
(4)	Sclerenchyma	(iv)	Stomata
(5)	Epidermal tissue	(v)	Sclereids

A. 1 - (i) , 2 - (iii) , 3 - (v) , 4 - (ii) , 5 - (iv)

B. 1 - (iii) , 2 - (i) , 3 - (ii) , 4 - (v) , 5 - (iv)

C. 1 - (ii) , 2 - (iv) , 3 - (v) , 4 - (i) , 5 - (iii)

D. 1 - (v) , 2 - (iv) , 3 - (iii) , 4 - (ii) , 5 - (i)

**Answer: B**



**Watch Video Solution**

**78.** Which of the following statements are false

/ true

(A) Calcitonin regulates the metabolism of calcium

(B) Oxytocin stimulates contraction of uterine

muscles during birth

(C ) Grave's disease is caused by malfunctioning of adrenal gland

(D) ADH stimulates absorption of water and increase the urine productions

A. A,B and C are true, D only false

B. A only true , B,C and D are false

C. A and D are false , B and C are true

D. A and B are true , C and D are false

**Answer: D**



**Watch Video Solution**

79. Ulothrix and Spirogyra are :

- A. Colonial and branched
- B. Solitary and branched
- C. Filamentous and unbranched
- D. Filamentous and branched

**Answer: C**



**Watch Video Solution**

**80.** Which of these is a non - steroidal contraceptive pill ?

A. Mala D

B. Mala L

C. Saheli

D. Progestogens

**Answer: C**



**Watch Video Solution**

**81.** The chemiosmotic theory of ATP synthesis in the chloroplast and mitochondria is based on

A. membrane potential.

B. proton gradient

C. accumulation of  $Na^+$

D. accumulation of  $K^+$

**Answer: B**



**Watch Video Solution**

**82.** Which one of the following is not a plastid ?

A. Aleuroplast

B. Chromoplast

C. Chloroplast

D. Aleurone

**Answer: D**



**Watch Video Solution**



**83.** The most commonly used bioreactor is of stirring type . The stirrer facilitates.

- A. Temperature control
- B. pH control
- C. Oxygen availability
- D. Product removal

**Answer: C**



**Watch Video Solution**

**84.** During somatic hybridisation in plants

A. Somaclones are produced in large

B. Apical meristems are cultured to get virus

- free plants

C. Cell wall and middle lamella are digested

before fusing the cells.

D. Crop plants with higher levels of vitamins ,

proteins and minerals are hybridised

**Answer: C**



Watch Video Solution

**85.** How much oxygen is supplied to tissues under normal physiological conditions by the oxygenated blood ?

- A. 5 ml oxygen/ 100 ml of blood
- B. 4 ml oxygen/ 100 ml of blood
- C. 15 ml oxygen/ 100 ml of blood
- D. 20 ml oxygen/ 100 ml of blood

**Answer: A**



[Watch Video Solution](#)

**86.** Pronoba moth is specific pollinator of:

A. Evening primrose.

B. Ophrys.

C. Yucca

D. Commelina

**Answer: C**



[Watch Video Solution](#)

**87. GLUT - 4 is**

A. a protein which enables glucose transport in cells

B. a carbohydrate which enables glucose transport in cells

C. a protein which enables glucose transport .

D. a lipid which allows transport of hormone.

**Answer: A**



**Watch Video Solution**

**88. Match the column :**

	Column-I		Column-II
a.	Prophase	(i)	Nucleolus reappears.
b.	Metaphase	(ii)	Division of protoplast.
c.	Anaphase	(iii)	Chromosome completes its condensation.
d.	Telophase	(iv)	Spindle fibres start appearing near the nucleus.
e.	Cytokinesis	(v)	Chromosomes appear V, L, J and I shaped.

**A. a - (ii) , b - (v) , c - (i) , d - (iii) e - (iv)**

**B. a - (iv) , b - (iii) , c - (v) , d - (i) e - (ii)**

C. a - (v) , b - (iv) , c - (iii) , d - (ii) e - (i)

D. a - (i) , b - (ii) , c - (iii) , d - (iv) e - (v)

**Answer: B**



**Watch Video Solution**

**89.** Pyruvic acid, the key product of glycolysis can have many metabolic fates. Under aerobic condition it forms

A. lactic acid

B.  $CO_2 + H_2O$

C. acetyl  $CoA + CO_2$

D. ethanol +  $CO_2$

**Answer: C**



**Watch Video Solution**

**90.** Arrange the following in descending order of their size.

A.  $DNA \rightarrow tRNA \rightarrow mRNA \rightarrow rRNA$



B.  $DNA \rightarrow mRNA \rightarrow rRNA \rightarrow tRNA$

C.  $DNA \rightarrow rRNA \rightarrow mRNA \rightarrow tRNA$

D.  $DNA \rightarrow rRNA \rightarrow tRNA \rightarrow mRNA$

**Answer: B**



**Watch Video Solution**