



## BIOLOGY

### BOOKS - NTA MOCK TESTS

#### NTA NEET SET 92

#### Biology

1. Match the columns I, II and III , and choose the CORRECT combination from the options given regarding Cockroach

	Column I		Column II		Column III
a.	Testes	K.	2 <sup>nd</sup> – 6 <sup>th</sup> segments	w.	1 pair
b.	Ovaries	L.	4 <sup>th</sup> – 6 <sup>th</sup> segments	x.	8 ovarioles
c.	Spermathecae	M.	6 <sup>th</sup> – 7 <sup>th</sup> segments	y.	bilobed
d.	Mushroom	N.	6 <sup>th</sup> segment	z.	single

A. a-L-y, b-K-x, c-M-z, d-N-w

B. a-L-w, b-K-x, c-N-y, d -M-z

C. a-k-x,b-L-w,c-N-y,d-M-z

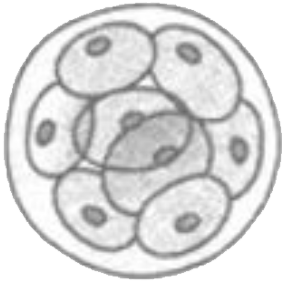
D. a-N-x,b-M-w,c-K-z,d-L-y

**Answer: B**



**Watch Video Solution**

2. Recognize the figure and find out the CORRECT matching.



a



b

- A. a-morula , b-blastocyst
- B. a-blastocyst , b-morula
- C. a-blastocyst , b-gastrula
- D. a-morula , b-gastrula

**Answer: A**



**Watch Video Solution**

3. A droplet infection is

A. Tetanus

B. Pneumonia

C. Syphilis

D. Typhoid

**Answer: B**



**Watch Video Solution**

**4. Find the odd one.**

A. Sea lily

B. Sea fan

C. Sea cucumber

D. Sea urchin

**Answer: B**



**Watch Video Solution**

5. The ..... relays impulses from the CNS to skeletal muscles .

- A. Somatic neural system
- B. automatic neural system
- C. the central neural systems
- D. the vertebral system

**Answer: A**



**Watch Video Solution**

6. Disease caused by undersecretion of adrenal cortex

- A. Sterility
- B. Cretinism
- C. Cushing disease

D. Addison's disease

**Answer: D**



[Watch Video Solution](#)

7. Fatigue is mostly associated with

- A. repeated stimulation of muscles
- B. excessive work load on muscles
- C. anaerobic respiration in muscles
- D. all of these

**Answer: D**



[Watch Video Solution](#)

8. Abortions are much riskier

A. before second trimester

B. after conception

C. at second trimester

D. After gastrulation

**Answer: C**



[Watch Video Solution](#)

**9. Find the ODD one out.**

A. Eye of Octopus and mammals

B. Flippers of penguin and dolphins

C. Sweet potato and potato

D. Upper limb of man and forelimbs of cheetah .

**Answer: D**



[Watch Video Solution](#)

10. Flowers are always wind pollinated in family:

- A. Compositae
- B. Brassicaceae
- C. Solanaceae
- D. Poaceae

**Answer: D**



[Watch Video Solution](#)

11. The plants growing in dark show yellowing in leaves and elongated internodes, this condition is called as

- A. Etiolation
- B. Chlorosis
- C. Dechlorosis



D. Dark effect

**Answer: A**



**Watch Video Solution**

12. Which of the following is not one of the prime health risks associated with greater UV radiation through the atmosphere due to depletion of stratospheric ozone?

- A. reduced immune system
- B. damage of eyes
- C. increased liver cancer
- D. increased skin cancer

**Answer: C**



**Watch Video Solution**

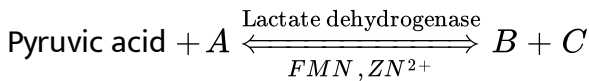
13. Ornamental belonging to family Liliaceae are

- A. tulip and Petunia
- B. glorioas and tulip
- C. glorioas and lupin
- D. lupin and Sesbania

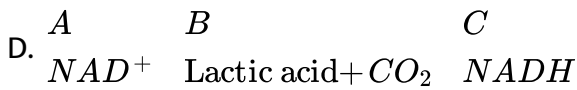
Answer: B

 Watch Video Solution

14. Identify A,B and C in the given reaction of lactic acid fermentation and select the correct option.



- A.  $A$        $B$        $C$   
 $NADH$    Lactic acid +  $CO_2$     $NAD^+$
- B.  $A$        $B$        $C$   
 $NADH$    Lactic acid    $NAD^+$
- C.  $A$        $B$        $C$   
 $NAD^+$    Lactic acid    $NADH$



**Answer: B**



**Watch Video Solution**

**15.** Read the following statements regarding methanogens and select the correct option.

- (i) They are included in the group Archaeobacteria.
- (ii) They are responsible for the production of biogas in gobar gas plants.
- (iii) They live in hot sulphur springs.
- (iv) They are strictly anaerobic.

- A. Statements (i) and (ii) are correct
- B. Statements (i),(ii) and (iv) are correct
- C. Statements (ii),( iii) and (iv) are correct
- D. All Statements are correct

**Answer: B**



Watch Video Solution

16. Match the columns I and II , and choose the correct combination from the options given .

Column I

(a) Chlorophyceae

(b) Phaeophyceae

(c) Rhodophyceae

Column II (Major pigments)

(i) Chlorophyll a,c fucoxanthin

(ii) Chlorophyll a,d, phycoerythrin

(iii) Chlorophyll a,b

A. a-iii, b-i, c-ii

B. a-iii, b-ii, c-i

C. a-ii, b-i, c-iii

D. a-i, b-iii, c-ii

Answer: A



Watch Video Solution

17. Phagocytosis may be characterized by which of the following statements ?

- A. It is a constitutive process
- B. It involves fluid uptake by small vesicles
- C. It is important in digestive processes in mammals
- D. It involves the uptake of cellular debris in large endocytic vesicles.

**Answer: D**



[Watch Video Solution](#)

18. Identify CORRECTLY matched pair.

- A. Zygotene -Pairing of homologous chromosomes
- B. Pachytene-Disjunction of hi homologous chromosomes
- C. Diakinesis-Recombination of non sister chromatids of homologous chromosomes

D. Diplotene-Nucleolus disappears

**Answer: A**



**Watch Video Solution**

**19.** The perigynous ovary will be seen in

A. Peach

B. Cucumber

C. cotton

D. Guava

**Answer: A**



**Watch Video Solution**

20. Match Column - I with column -II and select the CORRECT option from the codes given below.

Column – I	Column – II
(1) Bulliform cells	(i) Regulate the opening and closing of stomata
(2) Guard cells	(ii) Aerating pores in the bark of the plant
(3) Lenticels	(iii) Rolling in and out of leaves
(4) Subsidiary cells	(iv) Accessory cells

A. 1-(iii) , 2 -(i), 3-(ii) , 4-(iv)

B. 1-(i) , 2 -(ii), 3-(iii) , 4-(iv)

C. 1-(iv) , 2 -(iii), 3-(i) , 4-(ii)

D. 1-(ii) , 2 -(iv), 3-(iii) , 4-(i)

**Answer: A**



**Watch Video Solution**

21. Exudation and guttation are due to

- A. OP
- B. root pressure
- C. diffusion pressure
- D. transportation pull

**Answer: B**



[Watch Video Solution](#)

22. Soybean transport ureides from root nodules to various plant parts as fixed nitrogen , which

- A. is a nitrogen and phosphorus rich compounds
- B. carries high  $NO_3$  than carbohydrates
- C. carries high N : C ratio



D. Is highly soluble in organic compounds so , transported through xylem.

**Answer: C**

 [Watch Video Solution](#)

23. Choose the CORRECT one for photorespiration that  $CO_3$  compensation point

A. Photorespiration is common in plants having high  $CO_2$

Compensation point

B. Photorespiration is caused by high  $CO_2$  and low  $O_2$

C. It is not affected by light , temperature All of the above

D. All of the above

**Answer: A**

 [Watch Video Solution](#)

24. Two organisms with different correlated morphological characters belong to

- A. One biological species
- B. One taxonomic species
- C. Two biological species
- D. Two taxonomic species

**Answer: D**



[Watch Video Solution](#)

25. Electron Transport System (ETS) is located in mitochondrial

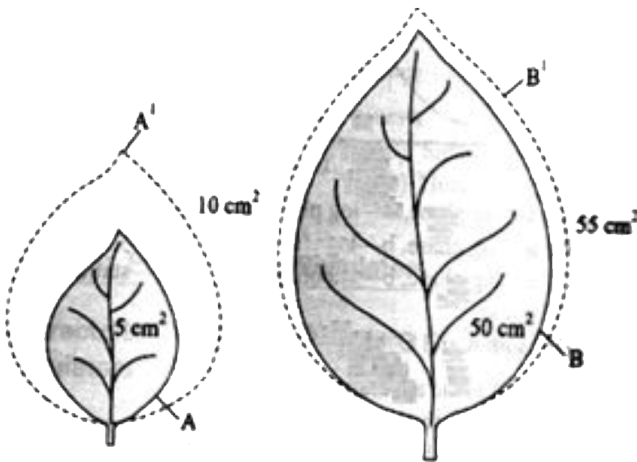
- A. Outer membrane
- B. inter membrane space
- C. inner membrane

D. matrix

Answer: C

 Watch Video Solution

26. Two levels, A and B of different sizes but shown absolute increase in the unit time to given leaves  $A^1$  and  $B^1$  Find out the absolute growth and relative growth rate of both the leaves.



A.

absolute Growth of  
 $5mc^2$

absolute Growth of B  
 $10cm^2$

Relative Growth Rate  
10 %

B.

absolute Growth of  
 $10mc^2$

absolute Growth of B  
 $5cm^2$

Relative Growth Rate  
5 %

C.

absolute Growth of  
 $5mc^2$

absolute Growth of B  
 $5cm^2$

Relative Growth Rate  
10 %

D.

absolute Growth of  
 $5mc^2$

absolute Growth of B  
 $5cm^2$

Relative Growth Rate  
100 %

**Answer: D**



**Watch Video Solution**

**27. Which of the following is not a process of asexual reproduction?**

A. Budding

B. Syngamy

C. Gemmulation

D. Fragmentation

**Answer: B**



**Watch Video Solution**

**28.** Protandry and protogyny help in

- A. Quick fertilization
- B. Self fertilization
- C. Cross fertilization
- D. Delayed fertilization

**Answer: C**



**Watch Video Solution**

**29.** Match Column -I with column-II and select the CORRECT option from the codes given below .

Column - I	Column - II
(P) Autopolypoidy	(i) $2n + 1$
(Q) Trisomy	(ii) AAAA
(R) Allopolyploidy	(iii) AABB
(S) Nullisomy	(iv) $2n - 2$

A. P-(ii), Q-(i), R-(iii), S-(iv)

B. P-(iv), Q-(i), R-(ii), S-(iii)

C. P-(ii), Q-(iv), R-(iii), S-(i)

D. P-(ii), Q-(i), R-(iv), S-(iii)

**Answer: A**



**Watch Video Solution**

**30.** Enzyme required for transcribing genetic information of DNA into RNA is

A. DNA dependent DNA polymerase

B. DNA dependent RNA polymerase

C. RNA dependent RNA polymerase

D. Both (a) and (b)

**Answer: B**



[Watch Video Solution](#)

**31.** Match the columns I and II, and choose the correct combination from the options given.

Column I	Column II
a. Brassica	1. Pusa Sawani
b. Cauliflower	2. Pusa Sadabahar
c. Chilli	3. Pusa Shubhra
d. Okra	4. Pusa Swarnim

A. a-1, b-2, c-3, d-4

B. a-3, b-4, c-2, d-1

C. a-4, b-3, c-2, d-1

D. a-4, b-3, c-1, d-2

**Answer: C**



[Watch Video Solution](#)

32. The ..... is a non-edible fungus.

- A. Agaricus
- B. Morels
- C. Baffles
- D. Toadstools

**Answer: D**



[Watch Video Solution](#)

33. The ..... means the number of birth per ..... in a particular area for a particular time.

- A. productivity, 100
- B. mortality, 1000
- C. natality, 1000



D. natality, 100

**Answer: C**



[Watch Video Solution](#)

**34.** XO type of sex determination and XY type of sex determination are the examples of

- A. male heterogamety
- B. female heterogamety
- C. male homogamety
- D. both (b) and (c)

**Answer: A**



[Watch Video Solution](#)

35. Consider the following statements (A-D) and select the option which correctly fills the blanks.

A. A group of species belonging to a trophic level that exploits a common resources base in a similar fashion is known as (i).

B. (ii) reduces decomposition and causes the Pilling up of detritus.

C. In oceans, productivity is limited by (iii) and (iv).

D. The largest reservoir of calcium is (v).

- A. (i) Guild (ii) Oxygen (iii) Nitrogen (iv) Light (v) Rocks
- B. (i) Guild (ii) Anaerobic condition (iii) Light (iv) Nitrogen (v) Rocks
- C. (i) Guild (ii) Anaerobic condition (iii) Phorphorus (iv) Dark (v) Soil
- D. (i) Guild (ii) Anaerobic condition (iii) Nitrogen (iv) Light (v) Soil

**Answer: B**



**Watch Video Solution**

36. Clones are

- A. only morphologically alike
- B. only genetically alike
- C. morphologically as well as genetically alike
- D. occasionally genetically alike

**Answer: C**

 [Watch Video Solution](#)

**37. Fill in the blanks :**

1. More than ...a... per cent of all species recorded are animals, while plants (including algae, fungi, bryophytes, gymnosperms and angiosperms) comprise no more than ...b.... Per cent of the total.
2. Among animals, insects making up more than ...c... per cent of the total.
3. Out of every 70 animals on this planet, ....d.... are insects.
4. The number of .....e..... species in the world is more than all the ....f... species combined.

A. a - 70, b - 12 , c - 22 , d - 7 , e- vertebrate , f - fungi

B. a - 70 , b - 22 , c - 70 , d - 7 , e - fungi , f - vertebrate

C. a - 70 , b - 22 , c - 70 , d - 49 , e - fungi , f - vertebrate

D. a - 67, b - 12 , c- 70 , d - 49 , e- vertebrate f - fungi

**Answer: C**



**Watch Video Solution**

**38.** All the given statement are true, except

A. DNA is more stable the RNA because DNA contains 5 methyl uracil  
and deoxyribose

B. DNA replication is semi-conservation bidirectional and semi-  
discontinuous

C. Taylor proved semi-conservative replication of DNA by working on E.  
Coil bacteria

D. Klenow fragment' is a part of DNA polymerase.

**Answer: C**



**Watch Video Solution**

**39.** Green muffler is meant for

- A. reducing smog
- B. sound insulation
- C. preventing haze formation
- D. reducing ground frost

**Answer: B**



**Watch Video Solution**

**40.** Select the CORRECT sequence of events with respect to the fungal sexual cycle.

A. Karyogamy, plasmogamy and meiosis

B. Meiosis, plasmogamy and karyogamy

C. Plasmogamy, karyogamy and meiosis

D. Meiosis, karyogamy and plasmogamy

**Answer: C**



[Watch Video Solution](#)

**41.** In fun aria, meiosis occurs in

A. Protonema

B. Prothallus

C. Spore mother cells

D. Spore

**Answer: C**



[Watch Video Solution](#)

**42.** The vacuole in the plant cell contains

- A. Stroma
- B. Matrix
- C. tonoplast
- D. Cell sap

**Answer: D**



**Watch Video Solution**

**43.** Syncytium condition can be observed in

- A. Liquid endosperm of coconut
- B. Solid endosperm of coconut
- C. Both liquid as well as solid endosperm of coconut

D. Embryo of coconut

**Answer: A**



[Watch Video Solution](#)

**44.** Monocot plants are characterized by the presence of how many of the following characters?

Scutellum, Reticulate venation, Fibrous roots, stilt roots, Pulvinous leaf base, isobilateral leaves

A. two

B. three

C. four

D. all of these

**Answer: B**



[Watch Video Solution](#)



45. Cells of ..... tissue are living, show angular wall thickenings and provide mechanical support.

- A. xylem
- B. sclerenchyma
- C. Collenchymas
- D. Epidermis

**Answer: C**



[Watch Video Solution](#)

46. Apical dominance is caused by

- A. Absciscic acid in lateral bud
- B. Cytokinin in leaf tip
- C. Gibberellin in lateral buds
- D. Auxin in shoot tip

**Answer: D**

 [Watch Video Solution](#)

**47.** In a cereal grain, the single cotyledon of an embryo is represented by the

- A. coleoptile
- B. coleorhiza
- C. prophyll
- D. scutellum

**Answer: D**

 [Watch Video Solution](#)

**48.** Select the WRONG statements regarding carbon cycle.

- A. Oceanic water can retain upto 50 time the  $CO_2$  levels in the air
- B. The only major reservoir of carbon in the biosphere is the lake
- C. Volcanic eruptions, hot springs, burning of fossil fuel and weathering add carbon dioxide into the atmosphere .
- D. The recycling of carbon is a self regulating feedback system.

**Answer: D**



**Watch Video Solution**

**49. Which is the CORRECT match ?**

- A. CrylAb - Cotton bollworms
- B. CrylAc - Cotton bollworms
- C. CrylAc - Corn borer
- D. CrylAb - corn borer

**Answer: B**



[Watch Video Solution](#)

50. The difference between oogenesis and spermatogenesis is

- A. oogenesis begins at puberty and spermatogenesis during embryonic development .
- B. oogenesis results in formation of four haploid ova from a primary oocyte, while during spermatogenesis only one sperm is formed from a primary spermatocyte.
- C. the Cytoplasmic division is unequal in oogenesis and equal in spermatogenesis .
- D. spermatogenesis is not completed until after fertilization occurs, but oogenesis is completed at the time of birth.

**Answer: C**



[Watch Video Solution](#)

51. The pathogen Epidermophyton responsible for ringworm disease in humans belongs to the same kingdom disease in humans belongs to the same kingdom of organisms as that of the same kingdom of organisms as that of

- A. Wuchereria , a roundworm
- B. Entamoeba , a protozoan
- C. Mucor, a mould
- D. Taenia, a tapeworm

**Answer: C**



**Watch Video Solution**

52. Which of the following hormones has no control over gluconeogenesis ?

- A. Insulin

B. Glucagon

C. Vasopressin

D. Corticosterone

**Answer: C**



**Watch Video Solution**

53. 'Ontogeny recapitulates phylogeny' is the statement related to

A. morphology

B. physiology

C. taxonomy

D. embryology

**Answer: D**



**Watch Video Solution**

54. Approximately how many restriction enzymes have been isolated from the different (over 230) strains of bacteria:

A. A - 900 , B - 230

B. A - 600 , B - 230

C. A - 230 , B - 900

D. A - 900 , B - 600

**Answer: A**



[Watch Video Solution](#)

55. The first clinical gene therapy was given for treating :

A. diabetes mellitus

B. chicken pox

C. rheumatoid arthritis

D. adenosine deaminase deficiency

**Answer: D**



**Watch Video Solution**

**56.** Which of the following organisms do not show male heterogamety ?

- A. hens
- B. humans
- C. fruit flies
- D. grasshoppers

**Answer: A**



**Watch Video Solution**

**57.** In IUCN Red list (2004), extinction of 784 species includes:

- A. 338 vertebrates , 359 invertebrates and 78 plants



B. 359 vertebrates , 33.8 invertebrates and 87 plants

C. 338 vertebrates , 359 invertebrates and 87 plants

D. 359 vertebrates , 338 invertebrates and 78 plants

**Answer: C**



[Watch Video Solution](#)

**58.** The five kingdom system of classification was proposed by.....,in the year.....

A. Whittaker, 1960

B. Whittaker, 1969

C. John Ray, 1975

D. de Candole , 1978

**Answer: B**



[Watch Video Solution](#)

59. All of the following processes occur in the endomembrane system ,  
except

- A. aerobic respiration
- B. protein glycosylation
- C. excretion
- D. synthesis of lipid - like steroidal hormones

**Answer: A**



**Watch Video Solution**

60. After fertilization, in the embryo sac which will grow faster?

- A. Nucellus
- B. Endosperm
- C. Pollen tube

## D. Synergids

**Answer: B**

 [Watch Video Solution](#)

61. The disease sickle-cell anaemia is caused by the substitution of (i) by (ii) at the (iii) position of (iv) globin chain of haemoglobin molecule

Which of the following correctly fills the blanks in the above statements ?

- A. (i) valine , (ii) glutamic acid , (iii) sixth , (iv) beta
- B. (i) glutamic acid , (ii) valine , (iii) sixth , (iv) beta
- C. (i) glutamic acid , (ii) valine , (iii) fifth , (iv) beta
- D. (i) valine , (ii) glutamic acid , (iii) fifth , (iv) beta

**Answer: B**

 [Watch Video Solution](#)

62. Identify the sequence of mRNA from the given sequence of coding strand of DNA.

5' T A C G T A G 3'

A. 5' U T G C U T C 3'

B. 3' U A C G U A G 5'

C. 3' U G C U T C 5'

D. 5' U A C G U A G 3'

**Answer: D**



[Watch Video Solution](#)

63. Find out the pairs which are correctly matched

- |                           |                                |
|---------------------------|--------------------------------|
| a. Cyanobacteria          | 1. Biopesticide                |
| b. Mycorrhiza             | 2. Solubilisation of phosphate |
| c. Bacillus thuringiensis | 3. Cry protein                 |
| d. single cell protein    | 4. Rhizobia                    |

A. A with 2

B. B with 2

C. C with 2

D. D with 2

**Answer: C**



**Watch Video Solution**

**64.** Consider the following statement.

- A. Temperature is the most ecologically relevant environmental factor.
- B. Temperature increases progressively from the equator towards the poles and from plains to the mountain tops.
- C. Diversity is not an important characteristic of living organisms .
- D. Mongo trees do not and cannot grow in temperate countries like Canada and Germany.

Of the above statements:

A. B and D are correct

B. A and B are correct

C. A and C are correct

D. A and D are correct

**Answer: D**



**Watch Video Solution**

**65.** What is the probability of production of homozygous tall offsprings in a cross between two heterozygous tall pea plants ?

A. Zero

B. 50 %

C. 75 %

D. 100 %

**Answer: C**



**Watch Video Solution**

66. The rate of conversion of light energy into chemical energy of organic molecules in an ecosystem is

- A. Gross primary productivity
- B. Net primary productivity
- C. Net secondary productivity
- D. Gross secondary productivity

**Answer: A**



[Watch Video Solution](#)

67. \_\_\_\_ is a parasite of large intestine of human beings and causes the disease \_\_\_\_

- A. Escherichia coli, amoebic dysentery
- B. Entamoeba histolytica, amoebic dysentery
- C. Plasmodium vivax, malaria

D. *Teypanosoma gambiense* , sleeping sickness

**Answer: B**



[Watch Video Solution](#)

**68.** Mendel formulated the law of purity of gametes on the basis of:

A. monohybrid cross

B. dihybride cross

C. test cross

D. back cross

**Answer: A**



[Watch Video Solution](#)



69. Which of the below mentioned regions exhibit less seasonal variations ?

- A. Tropics
- B. Temperates
- C. Alpines
- D. Both (A) and (B)

**Answer: A**



[Watch Video Solution](#)

70. Read the following matches

- (i) Datura- Actinomorphic flower
- (ii) Canna - Zygomorphic flower
- (iii) Gulmohur - Zygomorphic flower
- (iv) Cassia - Asymmetric flower

Which of these are correct ?

A. (i) , (ii) and (iii)

B. (i), (ii)

C. (ii) and (iv)

D. (ii), (iii) and (iv)

**Answer: B**

 [Watch Video Solution](#)

71. Which of the following is the CORRECT sequence of PCR ?

A. Denaturation → Annealing → Extension

B. Extension → Denaturation → Annealing

C. Annealing → Extension → Denaturation

D. Denaturation → Extension → Annealing

**Answer: A**

 [Watch Video Solution](#)

72. The following biomolecules are arranged in increasing order of their average percentage composition of the total cellular mass . Which of these orders is correct ?

A. Ions < Lipids < Carbohydrates < Nucleic acid < Proteins

B. Lipids < Ions < Carbohydrates < Nucleic acids < Proteins

C. Ions < Carbohydrates < Lipids < Nucleic acids < Proteins

D. Ions < Nucleic acids < Carbohydrates < Lipids < Proteins

**Answer: A**



[Watch Video Solution](#)

73. Which of the following statements about the human respiratory system are INCORRECT ?

I. During swallowing , glottis can covered by a thin elastic cartilaginous flap called epiglottis to prevent the entry of food into the larynx.

II. The trachea is a straight tube extending up to the mid- thoracic cavity, which divides at the level of the fourth thoracic vertebra into a right and left primary bronchi.

III. The trachea , primary secondary and tertiary bronchi, and initial bronchioles are supported by incomplete cartilaginous rings made up of hyaline cartilage.

IV. The respiratory part transports the atmospheric air to the alveoli, clear it from foreign particles, humidifies and also brings the air to body temperature.

A. I and III

B. II and IV

C. I and II

D. II,III and IV

**Answer: B**



**Watch Video Solution**

74. While recording ECG , the electrical lead is not attached to the

- A. right wrist
- B. left wrist
- C. right ankle
- D. left ankle

**Answer: C**



[Watch Video Solution](#)

75. There is a valve present at the junction of

- A. esophagus and stomach
- B. stomach and duodenum
- C. ileum and caecum
- D. ileum and jejunum

**Answer: C**



**Watch Video Solution**

**76.** In Henle's loop were absent from mammalian nephron , which of the following is to be expected

- A. There will be no urine formation
- B. There will be hardly any change in the quality of urine formation.
- C. The urine will be more concentrated
- D. The urine will be more dilute

**Answer: D**



**Watch Video Solution**

**77.** Match the columns I,II and III and choose the CORRECT combination, from the options given.

	Column I		Column II		Column III
a.	Tall and slender cells	1.	Cuboidal epithelium	K.	Bronchioles
b.	Flattened cells with irregular boundaries	2.	Columnar epithelium	L.	Tubular parts of nephrons
c.	Cilia on their free surface	3.	Squamous epithelium	M.	Lining of intestine
d.	Cube like cells	4.	Ciliated epithelium	N.	Wall of blood vessels

A. a - 2 - M, b - 3 - N , c - 4 - K, d - 1 - L

B. a - 2 - K, b - 1 - L , c - 4 - M, d - 3 - N

C. a - 4 - M, b - 3 - L , c - 1 - K, d - 1 - N

D. a - 2 - M, b - 3 - N , c - 4 - L, d - 1 - K

**Answer: A**



**Watch Video Solution**

78. The cells of the mammary gland that secrete and store milk are called

- A. alveoli
- B. ampulla
- C. areole
- D. adipose

**Answer: A**



[Watch Video Solution](#)

79. Which of the following antibody present in colostrum and provide passive immunity to the infant ?

- A. IgM,IgG
- B. IgG,IgA
- C. IgA only
- D. IgG only



**Answer: C**



**Watch Video Solution**

**80.** Which one of the following groups of three animals each are correctly matched with their characteristic morphological feature ?

- |    |  |                                      |
|----|--|--------------------------------------|
| A. | Animals                                  | Morphological feature                |
|    | Centipede , prawn , Sea urchin           | Joined appendages                    |
| B. |  |                                      |
|    | Animals                                  | Morphological feature                |
|    | Scorpion, Spider, Cockroach              | Ventral solid central nervous system |
| C. | Animals                                  | Morphological feature                |
|    | Cockroach, Locust, Taenia                | Metameric segmentation               |
| D. | Animals                                  | Morphological feature                |
|    | Liver fluke , sea anemone , Sea cucumber | Bilateral symmetry                   |

**Answer: B**



**Watch Video Solution**

81. Which of the following is a characteristic feature of the human cornea ?

- A. It is secreted by the conjuction and glandular cells.
- B. It is also called a lacrimal gland , which secretes tears.
- C. Blood circulation is absent in the cornea
- D. In old age, the cornea hardens and a white layer is deposited over it which leads to the formation of a cataract.

**Answer: C**



[Watch Video Solution](#)

82. Estrogen and testosterone are steroid hormones, which most likely bind to

- A. membrane ion channels
- B. cytoplasmic receptors

C. enzyme - linked membrane receptors

D. G - Protein linked membrane receptors

**Answer: A**



[Watch Video Solution](#)

**83.** Which of the following can be categorised as an age - related disorder

?

A. Myasthenia gravis

B. Tetany

C. Muscular dystrophy

D. Osteoporosis

**Answer: D**



[Watch Video Solution](#)

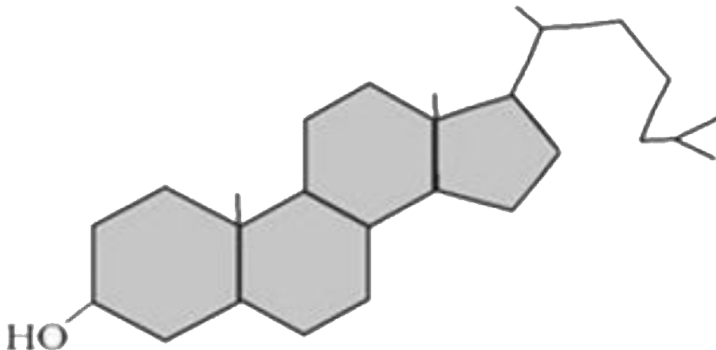
84. Which of the following is used as an emergency contraceptive ?

- A. Administration of progestogens
- B. Administration of progestogens - estrogen combinations
- C. IUDs
- D. All of the above

Answer: D

 [Watch Video Solution](#)

85. The following organic compound in living tissue is



A. carbohydrate

B. protein

C. lipid

D. nucleic acid

**Answer: C**



[Watch Video Solution](#)

**86.** The solubility of oxygen is

A. 20 - 25 times higher than carbon dioxide

B. 20 - 25 times lower than carbon dioxide

C. 10 - 15 times higher than carbon dioxide

D. 10 - 15 times lower than carbon dioxide

**Answer: B**



[Watch Video Solution](#)

87. Congestion of the lungs is one of the main symptoms in

- A. angina pectoris
- B. heat block
- C. heart failure
- D. cardiac arrest

**Answer: C**



**Watch Video Solution**

88. The muscularis layer of alimentary canal has

- A. inner circular and outer longitudinal muscles
- B. inner longitudinal and outer circular muscles
- C. inner smooth and outer skeletal muscles

D. inner skeletal and outer smooth muscles

**Answer: A**

 [Watch Video Solution](#)

**89.** Which of the following statements are CORRECT ?

I. Amino acids are organic compounds containing an amino group and an acidic group as substituents on the same carbon i.e., the  $\alpha$  - carbon

II. Primary metabolites have identifiable functions and play known roles in normal physiological processes.

III. Ribulose Bisphosphate Carboxylase - Oxygenase (RUBISCO) is the most abundant protein in the whole of the biosphere .

IV. Starch forms helical primary structures and it can hold  $I_2$  molecules in the helical portion.

A. I and III

B. II and IV

C. I,II, III and IV

D. I,II and III

**Answer: D**



**Watch Video Solution**

**90.** Refer to the events given below and arrange them in the CORRECT chorological order.

- (A) Invertebrates formed and active
- (B) First cellular forms of life
- (C) Existence of seaweeds and few plants
- (D) Appearance of reptiles on earth
- (E) Appearance of shrew - like mammals.

A.  $B \rightarrow A \rightarrow C \rightarrow D \rightarrow E$

B.  $B \rightarrow C \rightarrow A \rightarrow D \rightarrow E$

C.  $B \rightarrow A \rightarrow D \rightarrow C \rightarrow E$

D.  $B \rightarrow A \rightarrow C \rightarrow E \rightarrow D$



**Answer: A**



**Watch Video Solution**