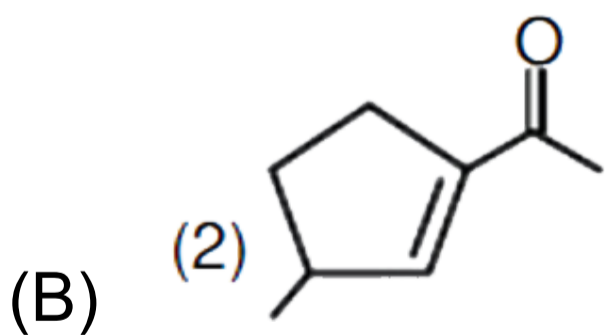
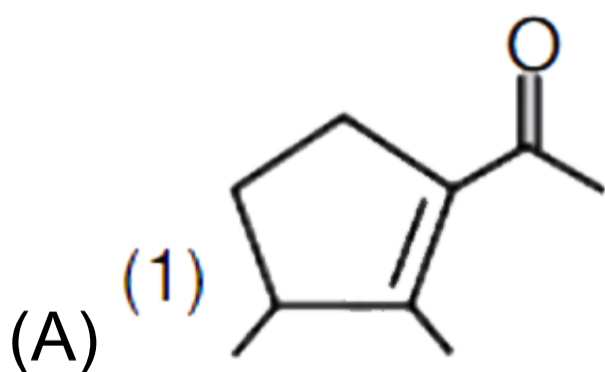
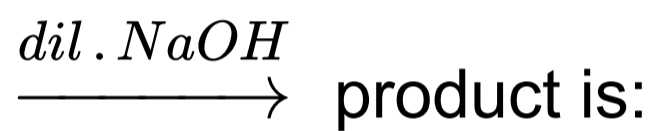
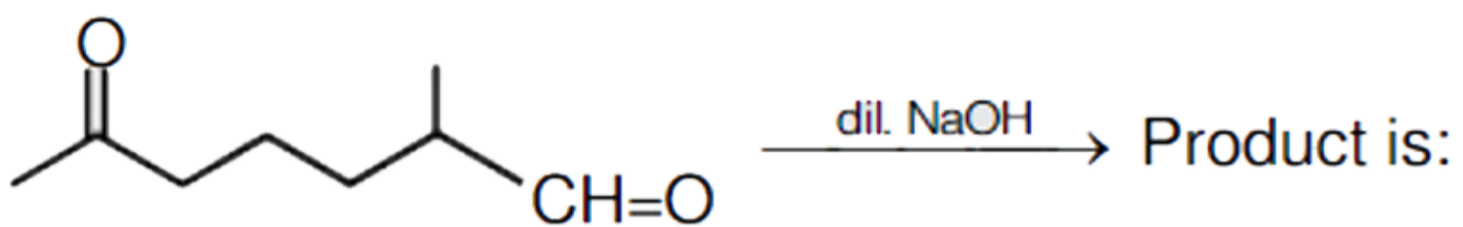


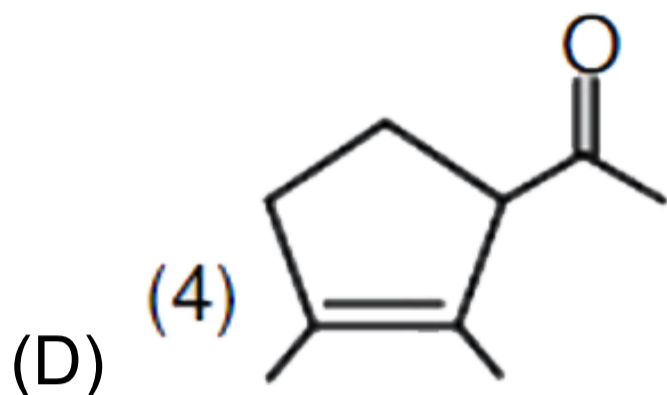
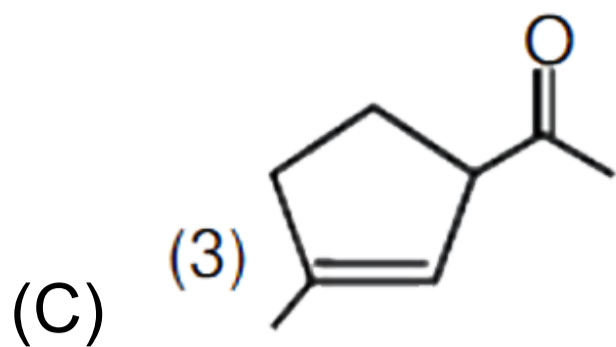
Ques No.

Question

1 - 9407431

JEE MAINS 08 APRIL 2019 - PAPER 1 SHIFT 2 - MEMORY BASED - CHEMISTRY





CORRECT OPTION: B

[Watch Free Video Solution on Doubtnut](#)

2 - 9407432

**JEE MAINS 08 APRIL 2019 - PAPER 1 SHIFT 2 -
MEMORY BASED - CHEMISTRY**

Maximum concentration of copper in drinking water is

(A) 5

(B) 3

(C) 0.5

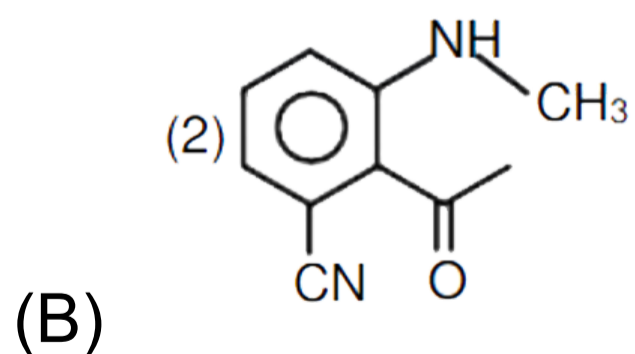
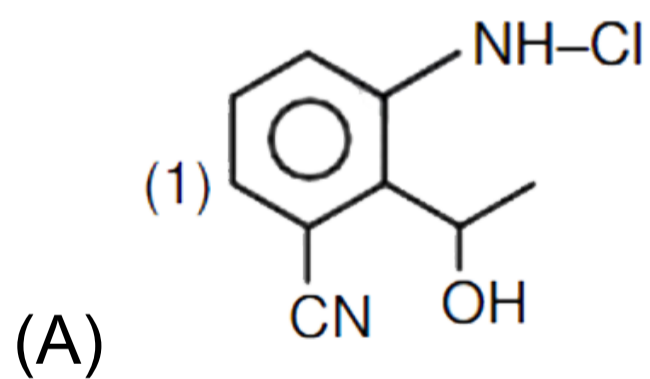
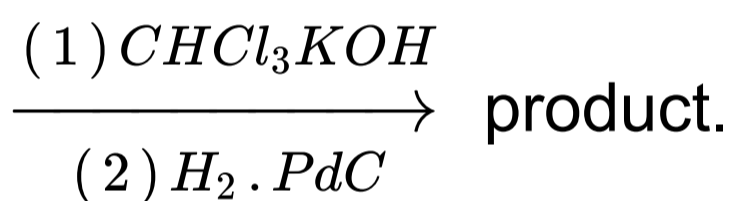
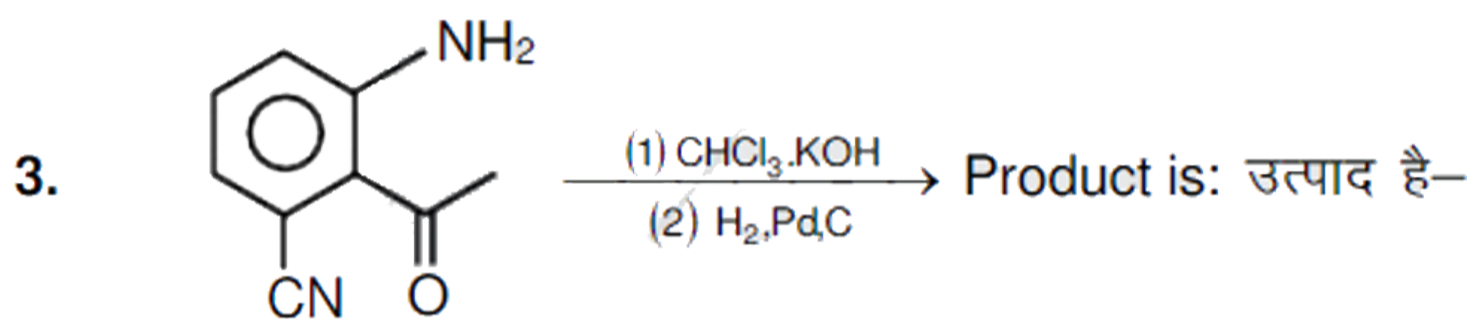
(D) 0.05

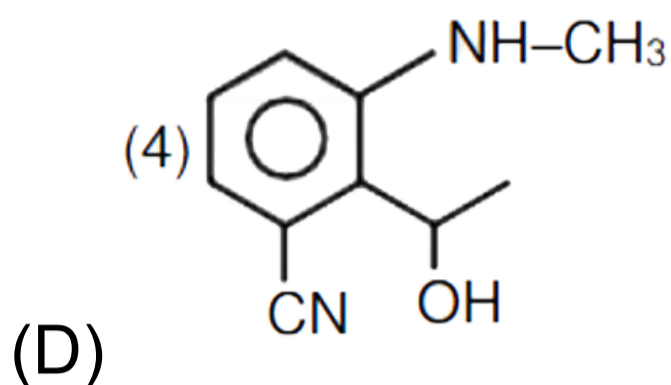
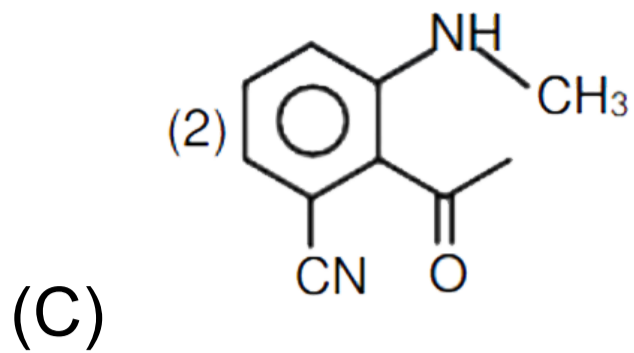
CORRECT OPTION: B

[Watch Free Video Solution on Doubtnut](#)

3 - 9407433

**JEE MAINS 08 APRIL 2019 - PAPER 1 SHIFT 2 -
MEMORY BASED - CHEMISTRY**





CORRECT OPTION: C

[Watch Free Video Solution on Doubtnut](#)

4 - 9407434

**JEE MAINS 08 APRIL 2019 - PAPER 1 SHIFT 2 -
MEMORY BASED - CHEMISTRY**

Glucose and fructose can be distinguished by

- (A) Barford's tests
- (B) Fehling solution
- (C) Bendict
- (D) Saliwanoff's test

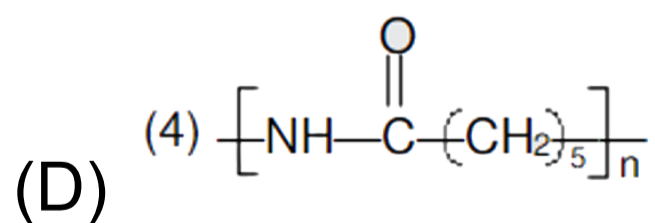
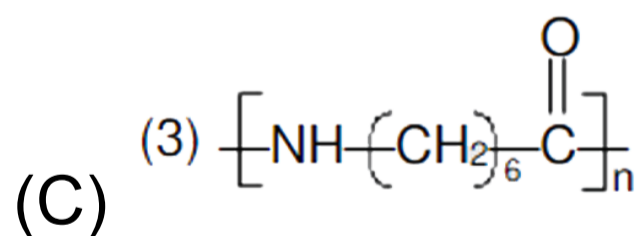
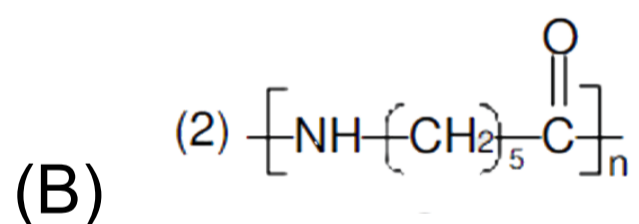
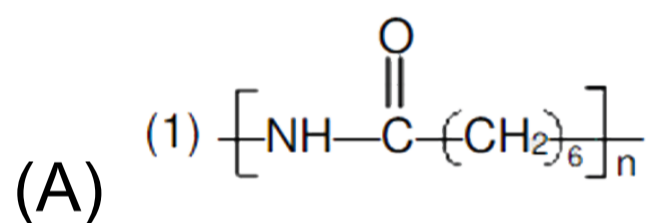
CORRECT OPTION: D

[📺 Watch Free Video Solution on Doubtnut](#)

5 - 9407435

**JEE MAINS 08 APRIL 2019 - PAPER 1 SHIFT 2 -
MEMORY BASED - CHEMISTRY**

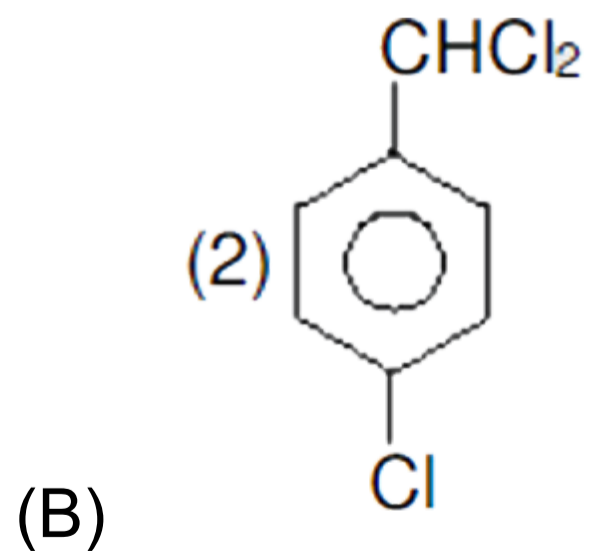
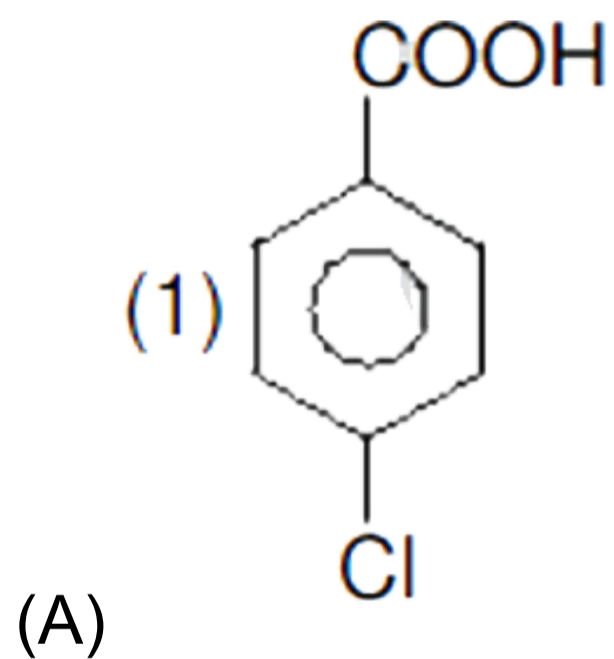
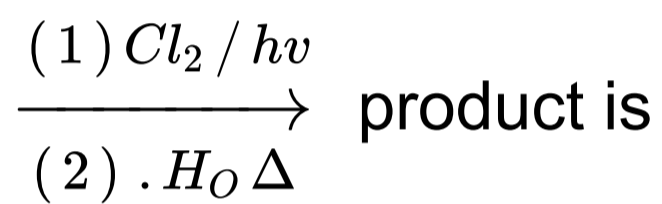
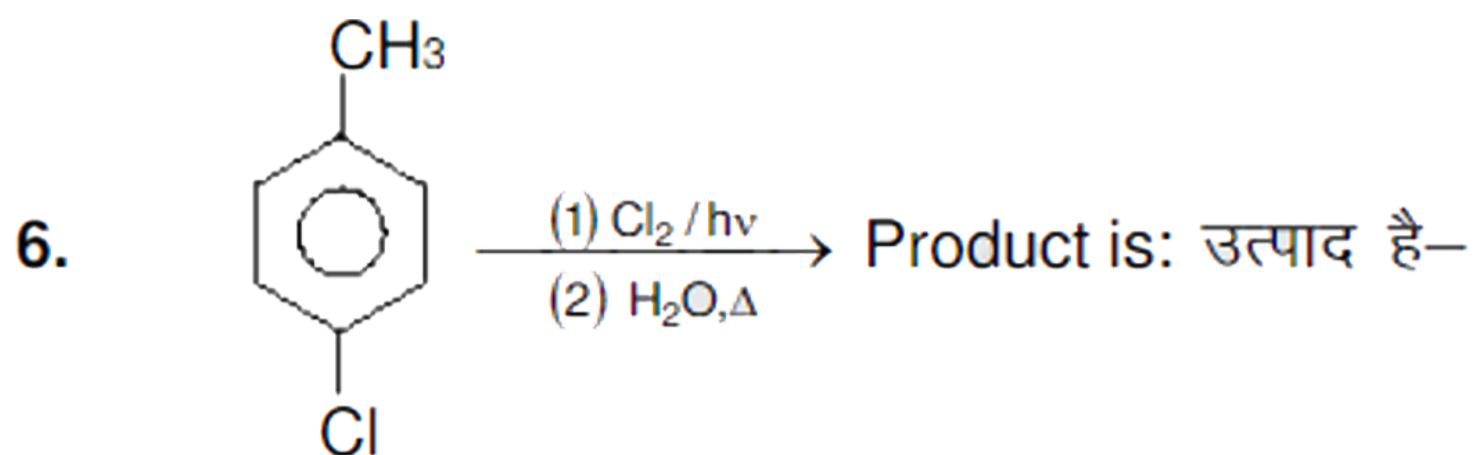
Which is the correct structure of Nylon-6

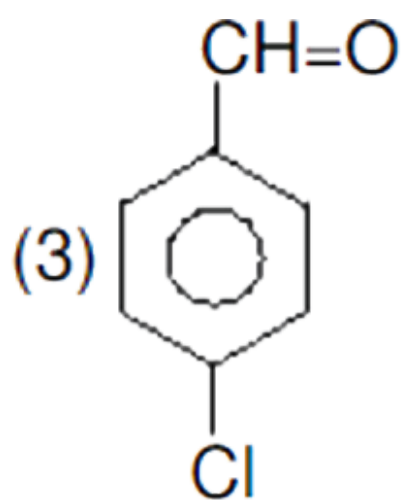


CORRECT OPTION: B

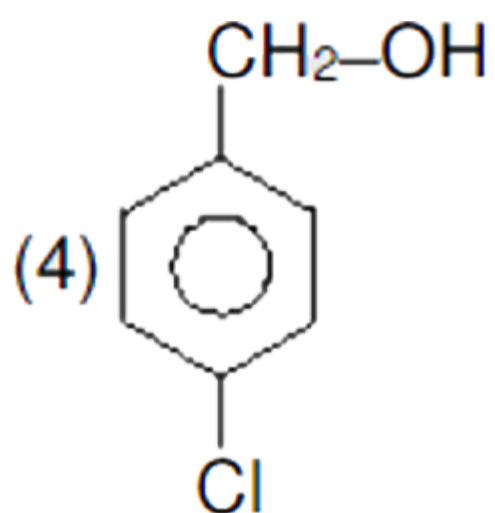
6 - 9407436

JEE MAINS 08 APRIL 2019 - PAPER 1 SHIFT 2 - MEMORY BASED - CHEMISTRY





(C)



(D)

CORRECT OPTION: D

[© Watch Free Video Solution on Doubtnut](#)

7 - 9407438

**JEE MAINS 08 APRIL 2019 - PAPER 1 SHIFT 2 -
MEMORY BASED - CHEMISTRY**

Polysubstitution is drawback of which reaction

(A) friedel craft alkylation

(B) friedel craft acylation

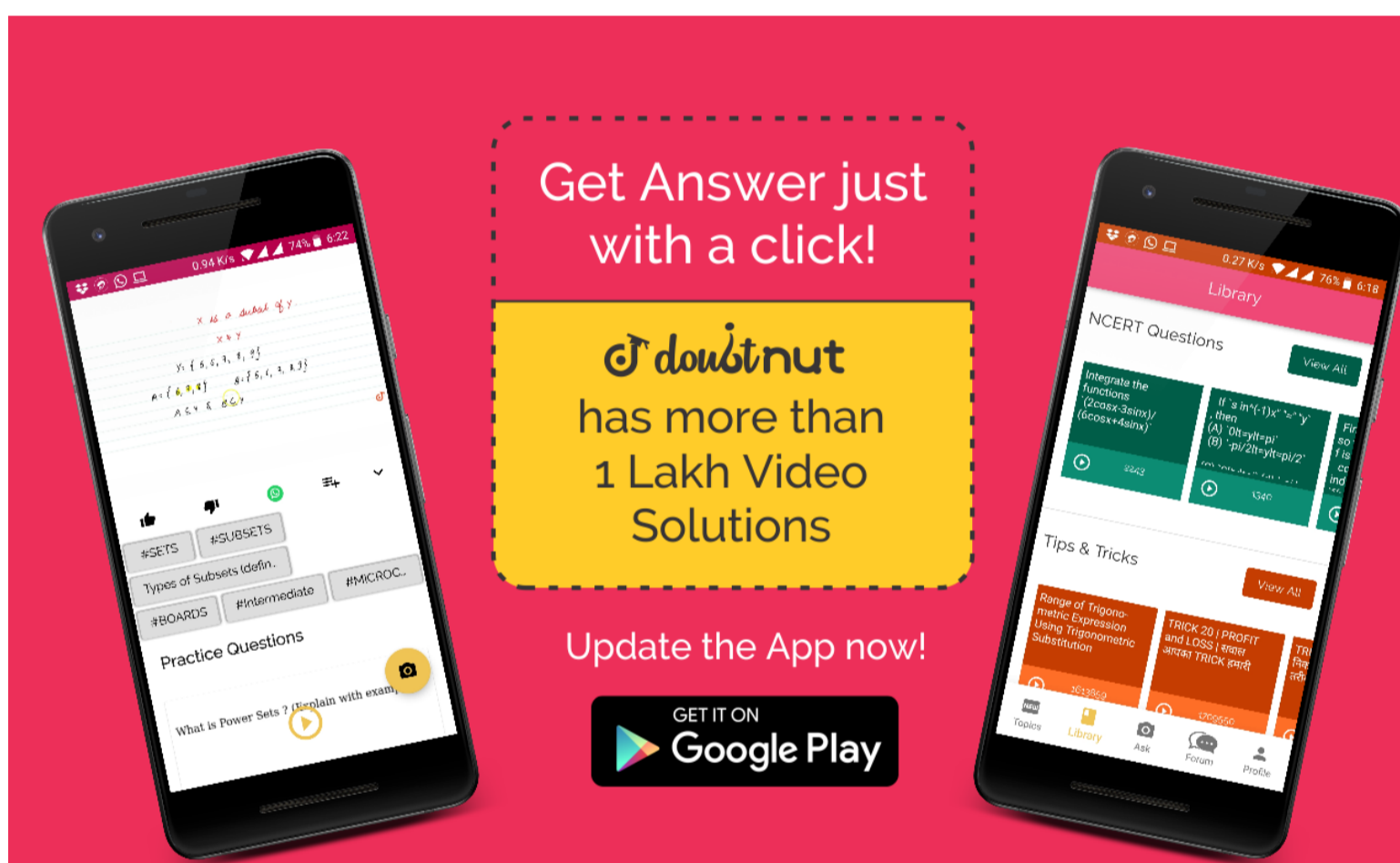
(C) nitration on aromatic ring

(D) chlorination on aromatic ring

CORRECT OPTION: A

[Watch Free Video Solution on Doubnut](#)

 **doubnut**
पढ़ना हुआ आसान



Get Answer just with a click!

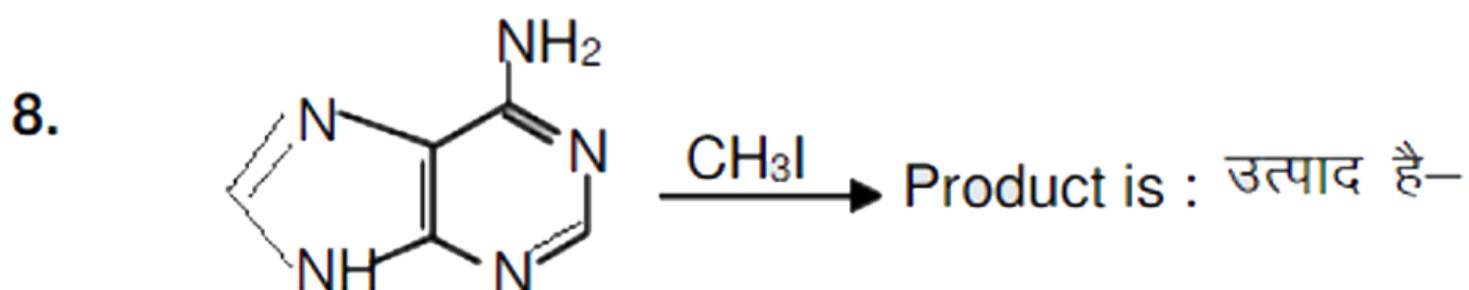
doubnut
has more than
1 Lakh Video
Solutions

Update the App now!

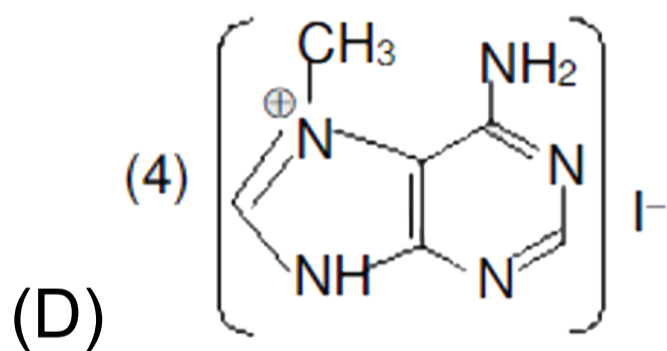
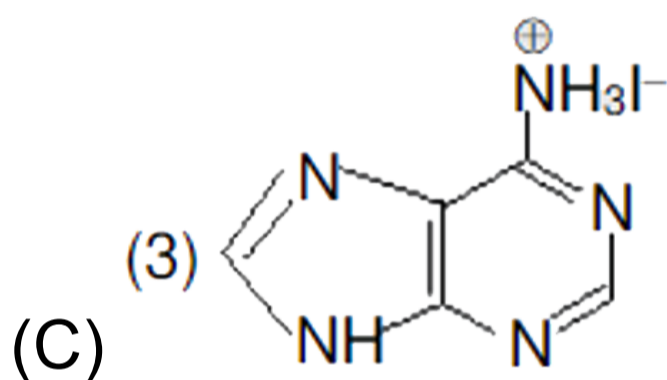
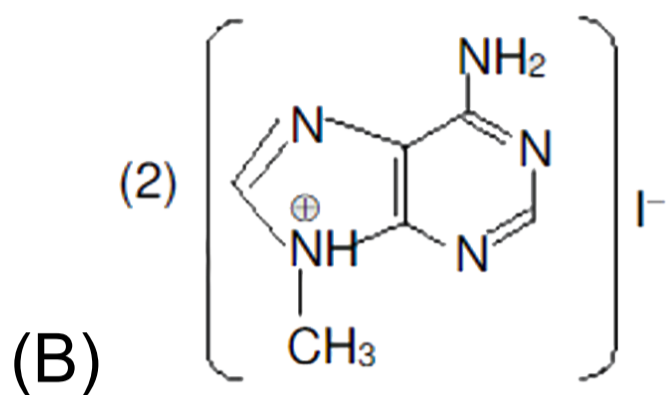
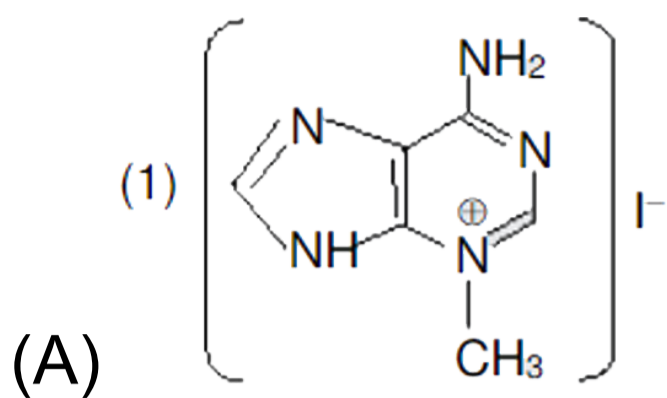
GET IT ON
Google Play

8 - 9407439

**JEE MAINS 08 APRIL 2019 - PAPER 1 SHIFT 2 -
MEMORY BASED - CHEMISTRY**



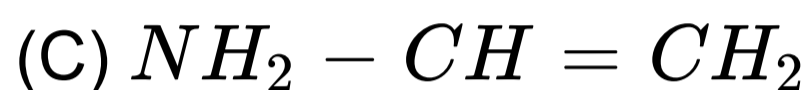
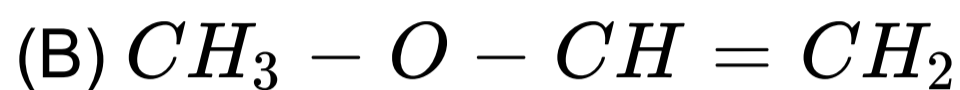
$\xrightarrow{\text{CH}_3\text{I}}$ product is



CORRECT OPTION: A

[© Watch Free Video Solution on Doubnut](#)

Which of the following alkenes will give anti-markownikoff's product as major product.



CORRECT OPTION: D

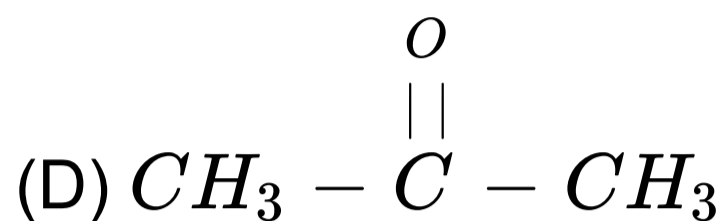
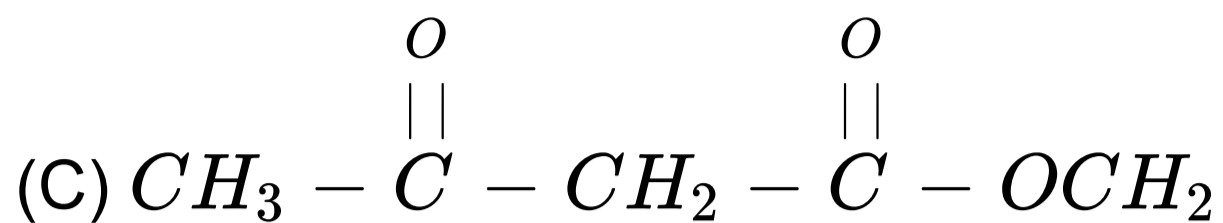
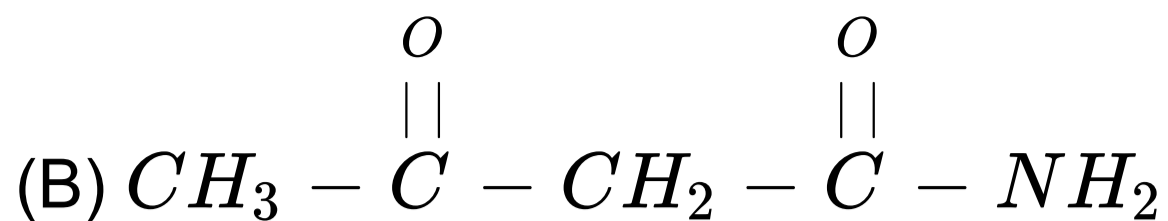
[📺 Watch Free Video Solution on Doubtnut](#)

10 - 9407441

**JEE MAINS 08 APRIL 2019 - PAPER 1 SHIFT 2 -
MEMORY BASED - CHEMISTRY**

Enol content is maximum in





CORRECT OPTION: A

[📺 Watch Free Video Solution on Doubtnut](#)

11 - 9407442

**JEE MAINS 08 APRIL 2019 - PAPER 1 SHIFT 2 -
MEMORY BASED - CHEMISTRY**

0.027 g of fatty acid is dissolved in 100 ml of solvent, 10 ml such solution is taken & placed over round plate. Distance from the centre of edge of round plate is 10 cm. Now solvent is evaporated & only fatty acid is remained. Density of fatty acid is 0.9 g/c . Determine height of fatty acid layer. ($\pi = 3$)

(A) 10^{-4} cm

(B) 10^{-6} cm

(C) 10^{-8} cm

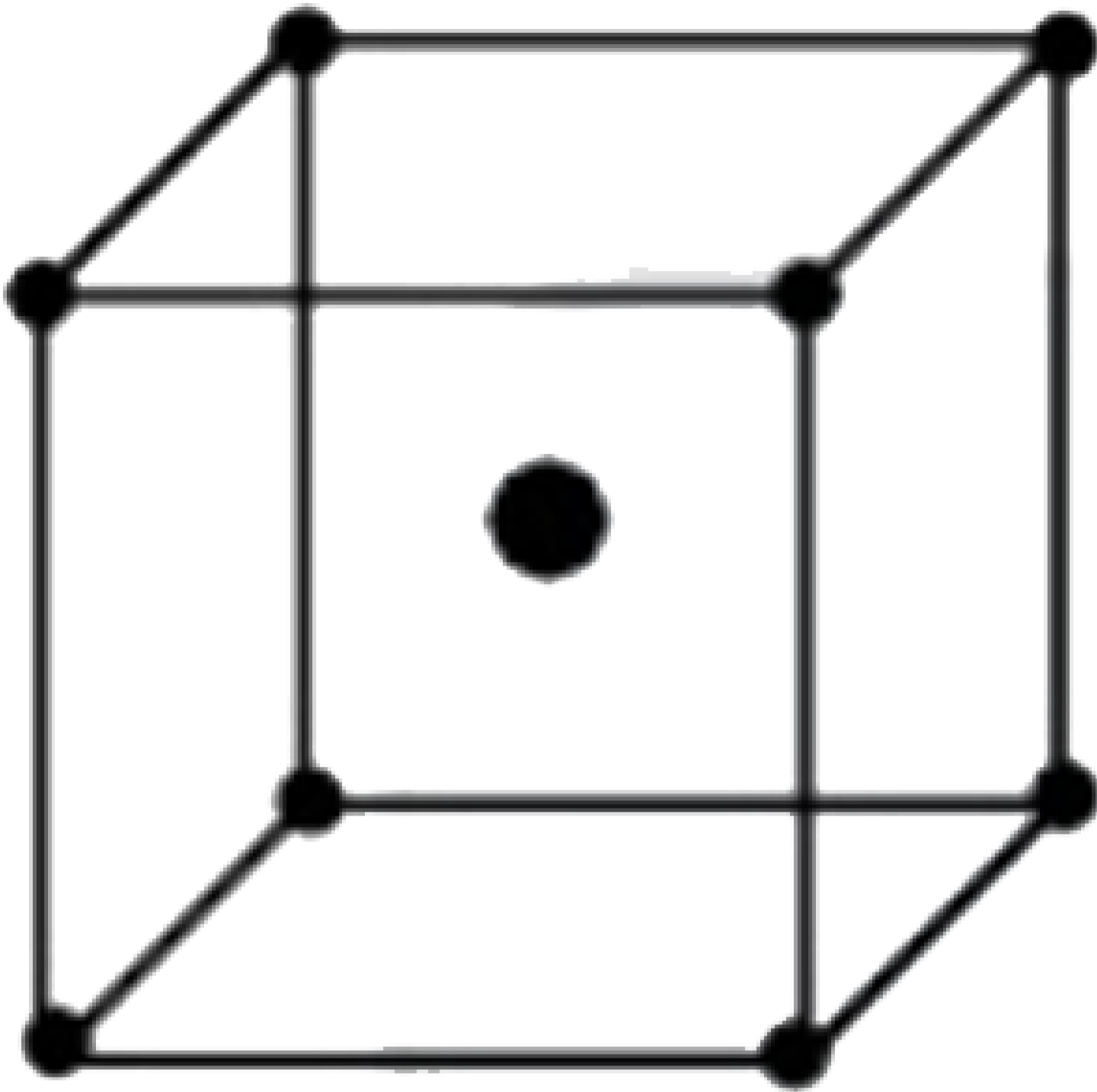
(D) 10^{-2} cm

CORRECT OPTION: A

[© Watch Free Video Solution on Doubtnut](#)

12 - 9407443

**JEE MAINS 08 APRIL 2019 - PAPER 1 SHIFT 2 -
MEMORY BASED - CHEMISTRY**



When radius of central atom is double with respect to corner atoms, then find out % packing efficiency

- (A) 75 %
- (B) 90 %
- (C) 60 %
- (D) 65 %

CORRECT OPTION: B

[📺 Watch Free Video Solution on Doubtnut](#)

**JEE MAINS 08 APRIL 2019 - PAPER 1 SHIFT 2 -
MEMORY BASED - CHEMISTRY**

If wavelength of particle moment P is equal to λ , then what will be its wavelength for momentum $1.5P$

(A) $\frac{2}{3}\lambda$

(B) $\frac{4}{3}\lambda$

(C) $\frac{3}{2}\lambda$

(D) λ

13 - 9407445

CORRECT OPTION: A

[📺 Watch Free Video Solution on Doubtnut](#)

14 - 9407446

**JEE MAINS 08 APRIL 2019 - PAPER 1 SHIFT 2 -
MEMORY BASED - CHEMISTRY**

$A \xrightarrow{K_1} B \xrightarrow{K_2} C$ if all the reaction are 1^{st} order and $\frac{d[B]}{dt} = 0$. Determine $[B]$.

(A) $(K_1 + K_2)[A]$

(B) $(K_1 - K_2)[A]$

(C) $(K_1 \times K_2)[A]$

(D) $\frac{K_1}{K_2} \times [A]$

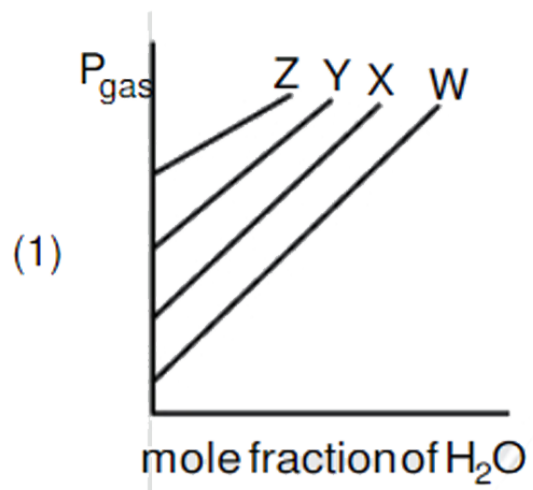
CORRECT OPTION: D

[© Watch Free Video Solution on Doubtnut](#)

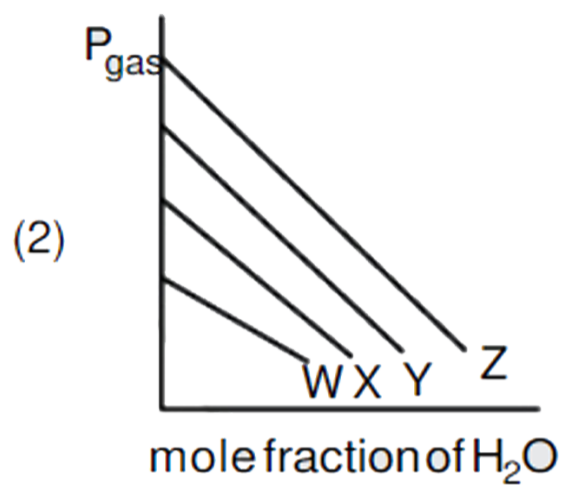
15 - 9407447

**JEE MAINS 08 APRIL 2019 - PAPER 1 SHIFT 2 -
MEMORY BASED - CHEMISTRY**

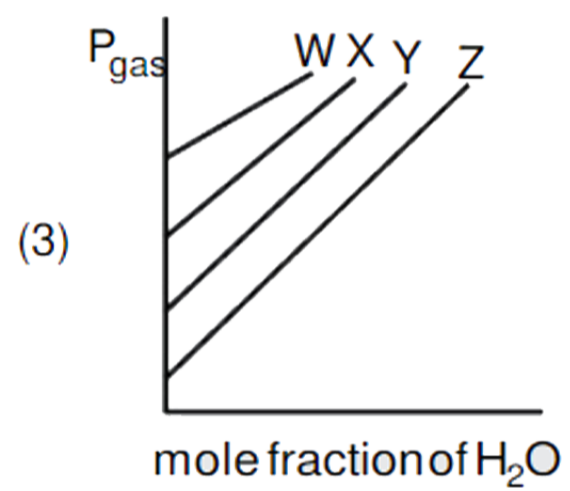
Henry's constant for the gases. W,X,Y and Z are 0.5 , 2, 35
and 40 bar repectively then select correct graph



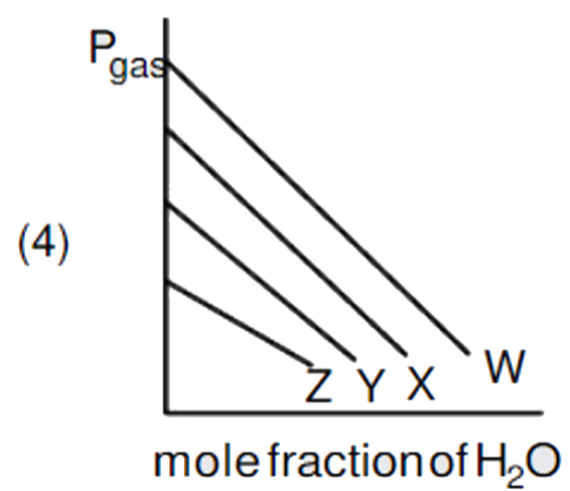
(A)



(B)



(C)



(D)

CORRECT OPTION: D

© Watch Free Video Solution on Doubtnut



16 - 9407448

JEE MAINS 08 APRIL 2019 - PAPER 1 SHIFT 2 - MEMORY BASED - CHEMISTRY

Which of the following metal is purified by using moonds process.

- (A) Ni
- (B) Zr
- (C) Ti
- (D) Cu

CORRECT OPTION: A

**JEE MAINS 08 APRIL 2019 - PAPER 1 SHIFT 2 -
MEMORY BASED - CHEMISTRY**

Find out % strength of 11.2V H_2O_2

- (A) 34 %
- (B) 3.4 %
- (C) 1.7 %
- (D) 13.8 %

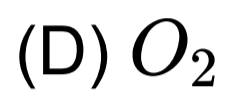
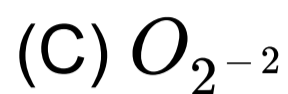
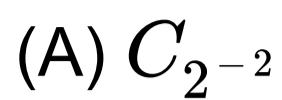
17 - 9407449

CORRECT OPTION: B

18 - 9407450

**JEE MAINS 08 APRIL 2019 - PAPER 1 SHIFT 2 -
MEMORY BASED - CHEMISTRY**

Which species is diamagnetic and have shortest bond length?



CORRECT OPTION: B

[📺 Watch Free Video Solution on Doubtnut](#)

19 - 9407451

**JEE MAINS 08 APRIL 2019 - PAPER 1 SHIFT 2 -
MEMORY BASED - CHEMISTRY**

What is the value of spin only magnetic moment of anionic

and cationic part of complex $[Fe(H_2O)_6]_2$

$[Fe(CN)_6]$

(A) $4.9B. M$ & zero

(B) zero and $4.9 B.M$

(C) 2.9 B.M. and 0

(D) 0 and 2.9 B.M.

CORRECT OPTION: B

[📺 Watch Free Video Solution on Doubtnut](#)

20 - 9407452

**JEE MAINS 08 APRIL 2019 - PAPER 1 SHIFT 2 -
MEMORY BASED - CHEMISTRY**

Which compound to use for treatment of tumor?

(A) *Cis* $[PdCl_2(NH_3)_2]$

(B) *Trans* $[PdCl_2(NH_3)_2]$

(C) *Cis* $[PtCl_2(NH_3)_2]$

(D) *Trans* $[PtCl_2(NH_3)_2]$

CORRECT OPTION: C

[📺 Watch Free Video Solution on Doubtnut](#)

**JEE MAINS 08 APRIL 2019 - PAPER 1 SHIFT 2 -
MEMORY BASED - CHEMISTRY**

Find out mole % of C in CH_4

(A) 80 %

(B) 20 %

(C) 25 %

(D) 75 %

21 - 9407453

CORRECT OPTION: B

[📺 Watch Free Video Solution on Doubtnut](#)

22 - 9407454

**JEE MAINS 08 APRIL 2019 - PAPER 1 SHIFT 2 -
MEMORY BASED - CHEMISTRY**

Which of the following is covalent in nature
($X = Cl, Br, I$)



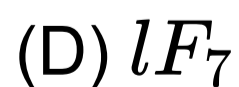
CORRECT OPTION: A

[© Watch Free Video Solution on Doubtnut](#)

23 - 9407455

**JEE MAINS 08 APRIL 2019 - PAPER 1 SHIFT 2 -
MEMORY BASED - CHEMISTRY**

Which of the following compound have sp^3d^2 hybridisation



CORRECT OPTION: B

📺 Watch Free Video Solution on Doubtnut



Get Solutions as YOU TYPE

Click Here to TYPE & ASK

find the equation of tangent a

Find the equation of tangent to the curve 'x=a(th...

Find the equation of tangent to the curve 'x=a(th...

Find the equation of tangent to the curve 'y=sin^(-1...

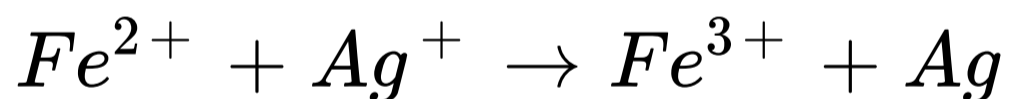
If '3x+y-9' is a tangent to a circle whose center is ...

Find the equation of tangent to 'y=int_(x^2)(x^3)(...

doubtnut

24 - 9407456

JEE MAINS 08 APRIL 2019 - PAPER 1 SHIFT 2 - MEMORY BASED - CHEMISTRY



if E° of $Ag^+ / Ag = x$

E° of $Fe^{2+} / Fe = y$

E° of $Fe^{3+} / Fe = z$

Determine std. EMF of given cell reaction.

(A) $x + 2y - 3z$

(B) $x - y$

(C) $x - z$

(D) $2x + y - 3z$

CORRECT OPTION: A

[📺 Watch Free Video Solution on Doubtnut](#)

25 - 9407457

**JEE MAINS 08 APRIL 2019 - PAPER 1 SHIFT 2 -
MEMORY BASED - CHEMISTRY**

Which of the following is incorrect about interstitial compounds.

(A) very reactive

(B) high metallic conductivity

(C) very hard

(D) high melting point.

CORRECT OPTION: A

[📺 Watch Free Video Solution on Doubtnut](#)

**JEE MAINS 08 APRIL 2019 - PAPER 1 SHIFT 2 -
MEMORY BASED - CHEMISTRY**

IUPAC symbol of atomic number 119.

(A) Uuh

(B) Uun

(C) Uue

(D) Uub

26 - 9407458

CORRECT OPTION: C

[📺 Watch Free Video Solution on Doubtnut](#)

27 - 9407459

**JEE MAINS 08 APRIL 2019 - PAPER 1 SHIFT 2 -
MEMORY BASED - CHEMISTRY**

Which of the following correct about $[Icl_4]^-$ and iCl_4 compound

(A) both isostructural

(B) $[ICl_4]^-$ is square planar and ICl_5 is square pyramidal.

(C) $[ICl_4]^-$ is square pyramidal and ICl_5 is square planar.

(D) $[ICl_4]^-$ is tetrahedral and ICl_5 is pentagonal bipyramidal.

CORRECT OPTION: B

[© Watch Free Video Solution on Doubtnut](#)

28 - 9407460

JEE MAINS 08 APRIL 2019 - PAPER 1 SHIFT 2 - MEMORY BASED - CHEMISTRY

5 mole of ideal gas at $100K$ ($C_{v.m} = 28J / mol / K$). It is heated upto $200 K$. calculate ΔU and $\Delta (PV)$ for the process ($R = 8J / mol - K$)

(A) $\Delta U = 28KJ, \Delta (PV) = 8KJ$

(B) $\Delta U = 14KJ, \Delta (PV) = 4KJ$

(C) $\Delta U = 14KJ: \Delta (PV) = 8KJ$

(D) $\Delta U = 28KJ, \Delta (PV) = 4KJ$

CORRECT OPTION: B

[© Watch Free Video Solution on Doubnut](#)

29 - 9407461

**JEE MAINS 08 APRIL 2019 - PAPER 1 SHIFT 2 -
MEMORY BASED - CHEMISTRY**



Calculate $K_{\text{equilibrium}}$ for

(A) 10^{25}

(B) 10^{77}

(C) 10^{70}

(D) 10^{40}

CORRECT OPTION: A

[👁 Watch Free Video Solution on Doubtnut](#)

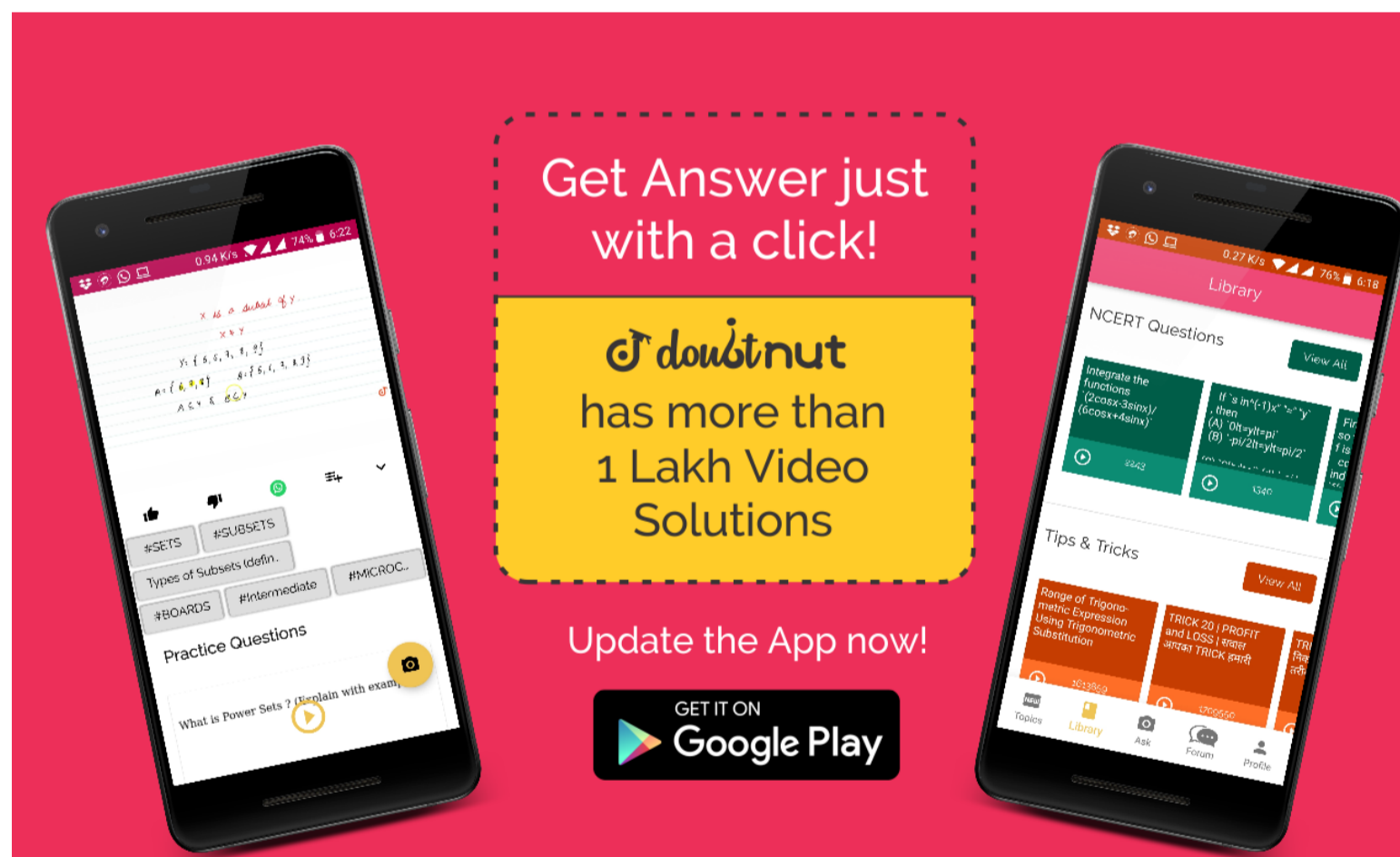
📲 Download Doubtnut to Ask Any Math Question By just a click

📲 Get A Video Solution For Free in Seconds

📲 Doubtnut Has More Than 1 Lakh Video Solutions

📲 Free Video Solutions of NCERT, RD Sharma, RS Aggarwal, Cengage (G.Tewani), Resonance DPP, Allen, Bansal, FIITJEE, Akash, Narayana, VidyaMandir

📲 Download Doubtnut Today



Get Answer just with a click!

doubtnut has more than 1 Lakh Video Solutions

Update the App now!

GET IT ON Google Play

The advertisement features two smartphones. The left phone displays a handwritten math problem: "x is a subset of y", with sets $X = \{1, 2, 3, 4, 5\}$ and $Y = \{1, 2, 3, 4, 5, 6, 7, 8, 9\}$. Below the problem are tags like #SETS, #SUBSETS, and #MICROC... and a "Practice Questions" section with a video player. The right phone shows a "Library" screen with "NCERT Questions" and "Tips & Tricks" sections, including a video titled "TRICK 20 | PROFIT and LOSS | smart TRICK part 1". A central yellow box contains the text "Get Answer just with a click!" and "doubtnut has more than 1 Lakh Video Solutions". Below this is a red button that says "Update the App now!" and a "GET IT ON Google Play" logo.