

[Download Doubtnut Now](#)

Q-1 - 10761403

Identify the cells whose secretion protects the lining of gastrointestinal tract from various enzymes

(A) Duodenal Cells

(B) Chief Cells

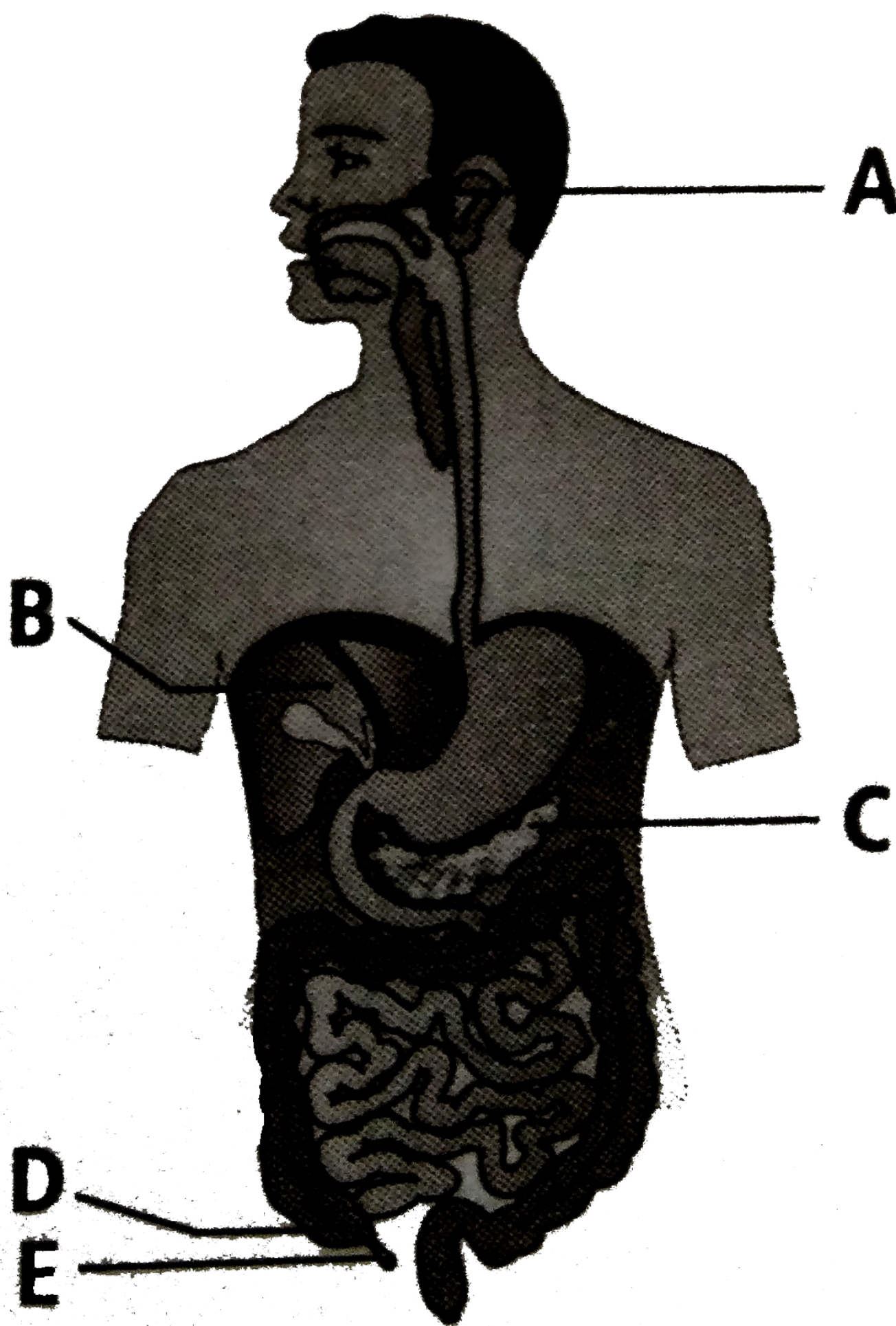
(C) Goblet Cells

(D) Oxyntic Cells

CORRECT ANSWER: C

[Watch Video Solution On Doubtnut App](#) 

The given figure represents the human digestive system. Identify A,B,C D and E.



(A) A-Parotid gland, B-Lvier, C-Pancreas, D-Caecu, E-

Vermiform appendix

(B) A-Parotid gland, B-Pancereas, C-Liver, D-Aecum, E-

Vermiform appendix

(C) A-Parotid gland, B-Caecum, C-Pancreas, D-Liver, E-

Vermiform appendix

(D) A-Parotid galnd, B-Liver. C-Caecu, D-

Pancreas,E=Vermiform appendix

CORRECT ANSWER: A

Watch Video Solution On Doubtnut App 

Q-3 - 13956520

Read the following statements and select the correct option.

Statement 1: Dental formula gives the number of teeth in the half of each jaw.

Statement 2: Dental formula can be xpressed for insectivorous

mammals as well as for the nonmammalian vertebrates.

(A) Both statements 1 and 2 are correct

(B) Statement 1 is correct but statement 2 is incorrect

Statement 1 is incorrect but statement 2 is correct.

(C) Statement 1 is incorrect but statement 2 is correct.

(D) Both statements 1 and 2 are incorrect.

CORRECT ANSWER: B

SOLUTION:

Dental formula is a representation of the dentition of an animal. A dental formula consists of eight numbers, four above and four below a horizontal line. The numbers represent (from left to right) the number of incisors, canines, premolars and molars in either half of the upper and lower jaws e.e., the dental formula of man is $\frac{2123}{2123}$

Dental formula is used to represent heterodont teeth which are present in mammals only. It cannot be used to represent dentition of vertebrates other than mammals as they have homodont teeth.

Watch Video Solution On DoubtNut App 

Q-4 - 17934580

Bile salts are poured into the alimentary canal where they are necessary for the absorption of

- (A) Na^{+} and Ca^{++}
- (B) Fat soluble vitamins
- (C) Amino acids and monosaccharides
- (D) All the nutrients are emulsified in chyme

CORRECT ANSWER: B

SOLUTION:

(b) Bile salt hep in the absorption of fats and fat soluble vitamin such as A,D,E and K in intestine.

Watch Video Solution On Doubtnut App 

Q-5 - 17934379

"Chief cells" or "Zymogen cells"

- (A) Isthmus of th gland
- (B) Neck of the tabular gland
- (C) Base of the tubular reigon
- (D) All the above

CORRECT ANSWER: C

Watch Video Solution On Doubtnut App 

When breast feeding is replaced by less nutritive food low in proteins and calories, the infants below the age of one year are likely to suffer from

- (A) Marasmus
- (B) Rickets
- (C) Kwashiorkor
- (D) Pellagra

CORRECT ANSWER: A

SOLUTION:

(a) Marasmus occurs due to prolonged malnutrition and deficiency of proteins and calories.

Epiglottis is meant for protecting

- (A) Oesophagus from entry of air
 - (B) Nasal chambers from entry of food
 - (C) Larynx from entry of food
 - (D) Teeth from caries
-

CORRECT ANSWER: C

Watch Video Solution On Doubtnut App 

The process involved in passage of food in the alimentary canal is

- (A) work

(B) Egestion

(C) Digestion

(D) Peristalsis

CORRECT ANSWER: C

Watch Video Solution On Doubtnut App 

Q-9 - 30696289

Zymogen cells of gastric glands produce

(A) Chymotrypsin

(B) Pepsin

(C) Pepsinogen

(D) Trypsin

CORRECT ANSWER: C

Watch Video Solution On Doubtnut App 

Q-10 - 30696305

Oxyntic cells in stomach secrete

(A) Pepsin

(B) Mucus

(C) HCL

(D) Rennin

CORRECT ANSWER: C

Watch Video Solution On Doubtnut App 

Q-11 - 30696663

Match the columns and find the correct combination

- | | |
|--------------|--------------|
| (a) Ptyalin | (i) Lipids |
| (b) Pepsin | (ii) Starch |
| (c) Steapsin | (iii) DNA |
| (d) Nuclease | (iv) Protien |

(A) a-I,b-iii,c-ii,d-iv

(B) a-I,b-iv,c-iii,d-ii

(C) a-ii,b-iv,c-I,d-iii

(D) a-ii,b-iii,c-I,d-iv

CORRECT ANSWER: C

Watch Video Solution On Doubtnut App 

Q-12 - 30696879

Peristalsis occurs in

(A) Urethra

(B) Trachea

(C) Blood vessels

(D) Alimentary canal.

CORRECT ANSWER: D

Watch Video Solution On Doubtnut App 

Q-13 - 30970617

Phagocytic cells of liver are

(A) Acinar cell

(B) Deiter cells

(C) Kupffer's cells

(D) Hensen cells

CORRECT ANSWER: B

SOLUTION:

Phagocytic cells of liver are kupffer's cells

Watch Video Solution On Doubtnut App 

Q-14 - 30970633

The food mixed thoroughly with the acidic gastric juice of the stomach by the churning movements of its muscular wall. What do we call the food then?

- (A) Bolus
- (B) Chyle
- (C) Chyme
- (D) Chylomicron

CORRECT ANSWER: C

SOLUTION:

The food mixes thoroughly with the acidic gastric juice of the stomach by the churning movements of its muscular wall and is called the chyme.

Watch Video Solution On DoubtNut App 

Q-15 - 30970642

The undigested and unabsorbed substances called faeces enter into the caecum of large intestine through

- (A) Pyloric sphincter
- (B) Gastro-oesophageal sphincter
- (C) Ileocaecal valve
- (D) Sphincter of Oddi

CORRECT ANSWER: C

SOLUTION:

The undigested and unabsorbed substances called faeces enters into the caecum of large intestine through ileo-caecal valve.

Watch Video Solution On Doubtnut App 

Q-16 - 30696301

Germes entering the body alongwith food are killed is alimentary canal where pH is

(A) 10

(B) 7

(C) 3

(D) 11

CORRECT ANSWER: C

Watch Video Solution On Doubtnut App 

In gluconeogenesis

- (A) Glucose is converted into glycogen
 - (B) Glucose is converted into glucose
 - (C) Sugar are converted into fats
 - (D) Glucose is formed from noncarbohydrates
-

CORRECT ANSWER: D

Watch Video Solution On Doubtnut App 

Bile can be prevented to pass into duodenum by

- (A) Pyloric valve

(B) Sphincter of Boyden

(C) Sphincter of Oddi

(D) Cardiac sphincter

CORRECT ANSWER: C

Watch Video Solution On Doubtnut App 

Q-19 - 17934663

Glucose and amino acids are absorbed in the intestine by

(A) Active transport

(B) Passive transport

(C) Selective absorption

(D) Osmosis

CORRECT ANSWER: A

Q-20 - 13956623

Which of the following statements are incorrect about chylomicrons?

- (i) Chylomicrons are produced in the epithelial cells of small intestine.
- (ii) It contains triglycerides, cholesterol and phospholipids.
- (iii) They are protein coated small vesicles.
- (iv) Chylomicrons are released from the epithelial cell into lacteals/

(A) i and iv

(B) ii and iii

(C) i,ii,iii and iv

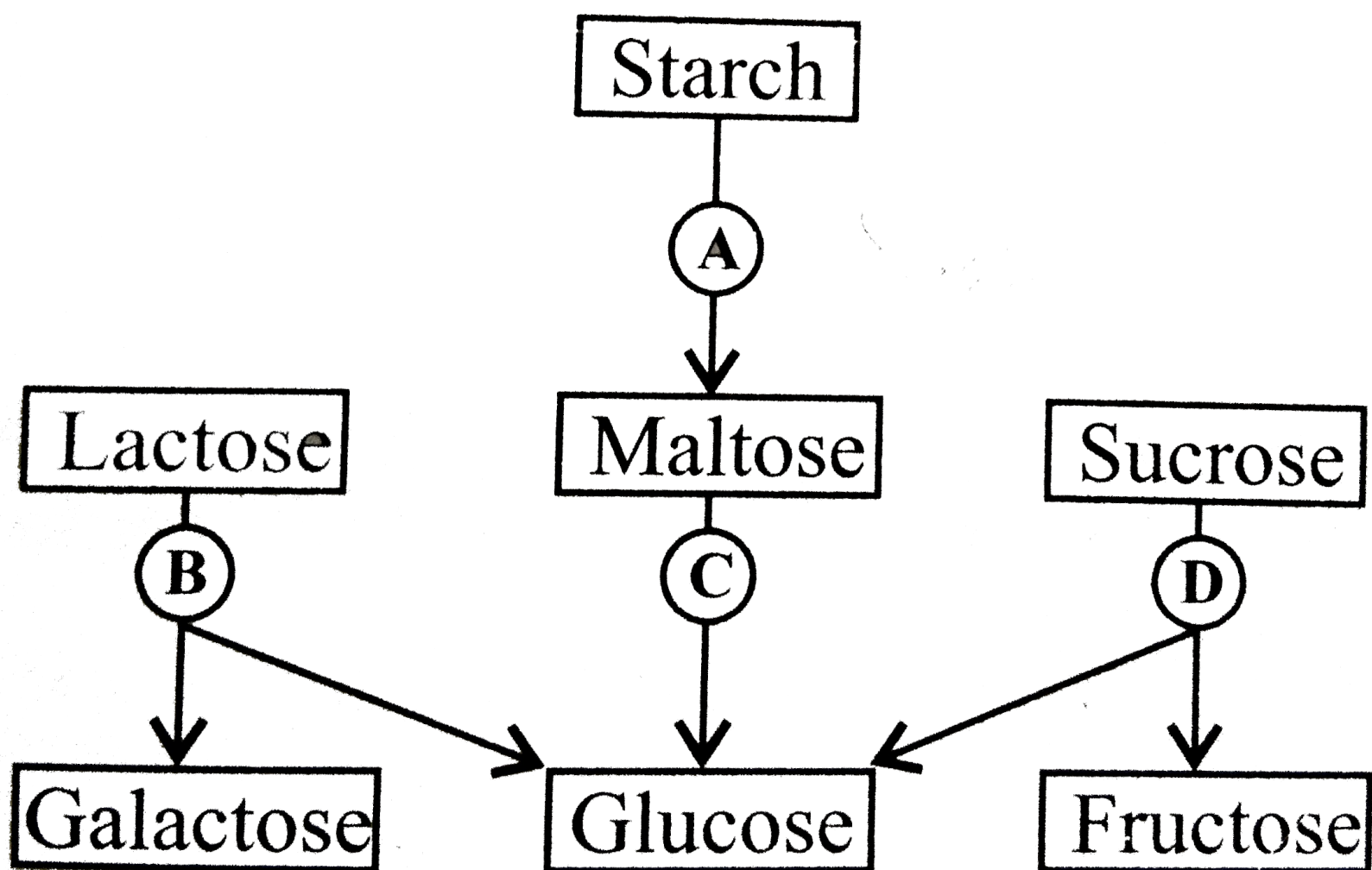
(D) none of these

CORRECT ANSWER: D

Watch Video Solution On Doubtnut App 

Q-21 - 17934563

The given flowchart shows the fate of carbohydrates during digestion in the human alimentary canal. Identify the enzymes acting at stages indicated as A,B,C and D and select the correct option.



(A) A = amylase, B= maltase, C= lactase, D= invertase

(B) A = amylase, B= maltase , C= inbvertase , D= lactase.

(C) A= amylase, B= invertase, C= maltase , D= lactase

(D) A = amylase, B= lactese, C= maltase, D= invertase

CORRECT ANSWER: D

Watch Video Solution On Doubtnut App 

Q-22 - 30696231

Marasmus is due to deficieny of

(A) vitamin Pyridoxine

(B) Vitamin D/Calcium /Phosphorus

(C) Food

(D) Fat

CORRECT ANSWER: C

Watch Video Solution On Doubtnut App 

Q-23 - 30696300

Succes entericus is

- (A) Swollen area between ileum and rectum
 - (B) Intestine juice
 - (C) Any swelling in gut
 - (D) Vermiform appendix
-

CORRECT ANSWER: B

Watch Video Solution On Doubtnut App 

Q-24 - 30970648

Absence of enterokinase will affect the following process

(A) Amylose \rightarrow Maltose

(B) Proteoses \rightarrow Dipeptide

(C) Lipid \rightarrow Fatty acid + Glycerol

(D) Dipeptide \rightarrow amino acid

CORRECT ANSWER: B

Watch Video Solution On Doubtnut App 

Q-25 - 30696512

Dental formula shwos

(A) Structure of teeth

(B) Monophyodont or diphyodont condition

(C) Number and type of teeth in both jaws

(D) Number and type of teeth in one half of both jaws.

CORRECT ANSWER: D

Watch Video Solution On Doubtnut App 

Q-26 - 30696668

Lysozymes are found in

(A) Saliva

(B) Tears

(C) Both saliva and tears

(D) Mitochondria

CORRECT ANSWER: C

Watch Video Solution On Doubtnut App 

Q-27 - 30696691

Nutrition involving engulfment of whole or parts of a plant or

animal in solid of liquid state is known as

(A) Holozoic

(B) Saprozoic

(C) Parasite

(D) Symbiotic

CORRECT ANSWER: A

Watch Video Solution On Doubtnut App 

Q-28 - 30970653

Carbohydrate digestion beings in

(A) Stomach

(B) Mouth

(C) Intestine

(D) All of the above

CORRECT ANSWER: B

SOLUTION:

Carbohydrate digestion begins in mouth by salivary amylase.

Watch Video Solution On Doubtnut App 

Q-29 - 30696260

The swallowing of food from buccopharyngeal cavity to stomach is called

(A) Deglutition

(B) Mastication

(C) Peristalsis

(D) non of the above

CORRECT ANSWER: A

Watch Video Solution On Doubtnut App 

Q-30 - 17934551

Trypsin differs from pepsin in that

(A) It digest protein in alkaline medium while pepsin does so in acidic medium

(B) Both (a) and (b)

(C) None of these

CORRECT ANSWER: A

SOLUTION:

(c) Bile juice constant bile salts and bile pigments.

Q-31 - 17934583

Which of the following option best represents the enzyme composition of pancreatic juice

- (A) Amylase, peptidase , trypsinogen,rennin
- (B) Amylase, pepsin, trypsinogen ,maltase
- (C) Peptidase, amylase, pepsin, rennin
- (D) Lipase, amylase , trypsinogen, procarboxypeptidase

CORRECT ANSWER: D

Q-32 - 17934657

What is the common between amino acids, fatty acids and glycerol

(A) These are all rich source of calories

(B) These are the builders of protoplasm

(C) These are the end products of digestion of two categories of food constituents

(D) These can be stored in the form of fat

CORRECT ANSWER: C

SOLUTION:

(c) Proteins are broken down into amino acids during the process of digestion and finally all fats are converted into fatty acid, glycerol and monoglycerides.

Watch Video Solution On Doubtnut App 

(A) Bile

(B) Pancreatic juice

(C) Succus entericus

(D) Gastric jucie

CORRECT ANSWER: B

Watch Video Solution On Doubtnut App 

Q-34 - 30696520

Animals do not synthesis

(A) Protien

(B) Vitamins

(C) Glycogen

(D) Phospholipids

CORRECT ANSWER: B

Watch Video Solution On Doubtnut App 

Q-35 - 30696699

A patient is advised to specially consume more meat ,lentil ,milk and eggs in diet when the patient suffers from

(A) Kwashiorkor

(B) Scurvy

(C) Rickets

(D) Anaemia

CORRECT ANSWER: A

Watch Video Solution On Doubtnut App 

Q-36 - 30970636

Among the following, how many enzymes are present in pancreatic juice: Trypsinogen, amylases, lipases, nucleosidases, nucleases, chymotrypsinogen, enterokinase, procarboxy peptidase

(A) 5

(B) 6

(C) 7

(D) 8

CORRECT ANSWER: B

SOLUTION:

Enzymes present in pancreatic juice are :

Trypsinogen , amylases , lipases , nucleases ,
chymotrypsinogen and procarboxy-peptidase.

Watch Video Solution On Doubtnut App 

Food bolus after passing through alkaline medium in the alimentary canal is

(A) Chylomicron

(B) Chyme

(C) Chyle

(D) Fat body

CORRECT ANSWER: C

SOLUTION:

Food bolus after passing through alkaline medium in the alimentary canal is chyle.

Watch Video Solution On Doubtnut App 

Cellulose digestion in ruminants occurs in

- (A) Rumen
- (B) Omasum
- (C) Abomasum
- (D) Reticulum

CORRECT ANSWER: A

SOLUTION:

Cellulose digestion in ruminants (cud-chewing animals) occurs in rumen.

Watch Video Solution On Doubtnut App 

A person with bleeding gums should add to his daily diet

(A) Vitamin A

(B) Vitamin B

(C) Vitamin C

(D) Vitamin D

CORRECT ANSWER: C

Watch Video Solution On DoubtNut App 

Q-40 - 13956626

Which of the following statements is/are incorrect?

(i) Absorption of simple sugar, alcohol, some water and medicines takes place in stomach.

(ii) Maximum water absorption occurs in large intestine.

(iii) Small intestine is the major site of digestion and absorption of

food.

(iv) Fatty acid and glycerol are absorbed by lacteals.

(v) Nothing is absorbed in mouth and large intestine.

(A) i,iv and v

(B) v only

(C) iv only

(D) ii and iii

CORRECT ANSWER: B

SOLUTION:

In the mouth certain drugs are absorbed. In the large intestine, water, some minerals and drugs are absorbed.

Watch Video Solution On Doubtnut App 

HCl is secreted by

(A) Zymogen cells

(B) Oxyntic cells

(C) Kupffer cells

(D) Mucous cells

CORRECT ANSWER: B

SOLUTION:

(b) The fundic part of stomach consists of 2 types of cells, chief or zymogenic cell secretes pepsin and oxyntic or parietal cell secretes HCl.

Watch Video Solution On DoubtNut App 

What will happen if the secretion of parietal cells of gastric glands is blocked with an inhibitor?

- (A) In the absence of HCl secretion , inactive pepsinogen is not converted into the active enzyme pepsin
- (B) Enterokinase will be not be released from the duodenal mucosa and so trypsinogen is not converted to trypsin
- (C) Gastric juice will be deficient in chymosin
- (D) Gastric juice will be deficient in pepsinogen

CORRECT ANSWER: A

Watch Video Solution On Doubtnut App 

Q-43 - 30696239

Digestion is completed in

(A) Duodenum

(B) Ileum

(C) Stomach

(D) Cloaca

CORRECT ANSWER: B

Watch Video Solution On Doubtnut App 

Q-44 - 30696296

Stimulation of acid secretion of stomach is due to

(A) Gastrin

(B) Histamine

(C) vagal activation

(D) All the above

CORRECT ANSWER: D

Watch Video Solution On Doubtnut App 

Q-45 - 30696309

Emulasification of fat is carried out by

- (A) Bile pigments
 - (B) Bile salts
 - (C) HCL
 - (D) Pancreatic juie
-

CORRECT ANSWER: B

Watch Video Solution On Doubtnut App 

Q-46 - 30696696

Read the following statements and select the correct option.

Statement 1 : The human small intestine is the longest portion in the alimentary canal.

Statement 2: Absorption of digested food requires a very large surface area.

- (A) Statement a is correct ,b is wrong
 - (B) Statement a as well as statement b are correct
 - (C) Statement b is correct a is wrong
 - (D) Both statement are wrong
-

CORRECT ANSWER: B

Watch Video Solution On Doubtnut App 

Q-47 - 30970655

Prorennin is produced by

(A) Islets of Langerhans

(B) Zymogen cells

(C) Sertoli cells

(D) Hepatocytes

CORRECT ANSWER: B

SOLUTION:

Prorennin is produced by zymogen or chief or peptic cells.

[Watch Video Solution On Doubtnut App](#) 

Q-48 - 30970668

DNase and RNase enzymes produced by

(A) Salivary glands

(B) Pancreas

(C) Stomach

(D) Intestine

CORRECT ANSWER: B

SOLUTION:

DNA- ase and RNA - ase (nucleases) enzymes
produced by pancreas.

Watch Video Solution On DoubtNut App 

Q-49 - 30696243

Pancreas has double role of

(A) Storage and digestion

(B) Digestion and absorpton

(C) Digestion and endocrine activity

(D) None of the above

CORRECT ANSWER: C

Watch Video Solution On DoubtNut App 

Q-50 - 17934545

Rennin acts on milk proteins and converts

(A) Caseinogen into casein

(B) Casein into paracasein

(C) Caseinogen into paracasein

(D) Paracasein into caseinogen

CORRECT ANSWER: B

SOLUTION:

(c) The trypsin enzyme is present in pancreatic juice which is secreted by pancreas.

Watch Video Solution On DoubtNut App 

Q-51 - 13956636

Anxiety and eating spicy food together in an otherwise normal human, may lead to

(A) indigestion

(B) jaundice

(C) diarrhoea

(D) vomiting.

CORRECT ANSWER: A

SOLUTION:

Indigestion is a disorder in which the food is not properly digested in the body leading to a feeling of fullness. The causes of this are inadequate enzyme secretion, anxiety. Food poisoning, over eating and spicy food.

Watch Video Solution On DoubtNut App 

Q-52 - 13956536

Which of the following is not a salivary gland?

- (A) Sublingual
- (B) Submaxillary
- (C) Lacrimal
- (D) Parotid

CORRECT ANSWER: C

SOLUTION:

Lacrimal gland is present in the eye and secretes tears.

It is not a salivary gland.

Watch Video Solution On Doubtnut App 

Q-53 - 17934362

The type of muscle present in the alimentary canal is

(A) Smooth muscle fibre

(B) Striped muscle fibre

(C) Cardiac muscle fibre

(D) Both a and b

CORRECT ANSWER: A

Watch Video Solution On Doubtnut App 

Q-54 - 17934696

A pregnant female delivers a baby who suffers from stunted growth, mental retardation, low intelligence quotient and abnormal skin.

This is the result of

- (A) Over secretion of pars distalis
- (B) Deficiency of iodine in diet
- (C) Low secretion of growth hormone
- (D) Cancer of the thyroid gland

CORRECT ANSWER: B

Watch Video Solution On Doubtnut App 

Q-55 - 30696189

Monophyodont teeth occur in

- (A) Humans

(B) Forg

(C) Whale

(D) Rat

CORRECT ANSWER: C

Watch Video Solution On Doubtnut App 

Q-56 - 30696198

Cardiac sphincter protects back flow of

(A) Food into esophagus

(B) Blood into heart

(C) Blood into auricle

(D) Blood into vena cava

CORRECT ANSWER: A

Q-57 - 30696211

Mumps is infection of salivary glands

(A) Submandibular

(B) Submaxillary

(C) Sublingual

(D) Parotid

CORRECT ANSWER: D

Q-58 - 17934653

Liver necrosis and muscular dystrophy are caused by the lack of this trace element

(A) Arsenic

(B) Molybdenum

(C) Zinc

(D) Selenium

CORRECT ANSWER: D

Watch Video Solution On Doubtnut App 

Q-59 - 17934385

Which of the following is correct pairing of the site of action and the substrate of renin

(A) Stomach-Casein

(B) Stomach-Fat

(C) Small Intestine-Protein

(D) Mouth-Starch

CORRECT ANSWER: A

SOLUTION:

(a) Casein is a phosphoprotein found in milk. It is digested by renin enzyme.

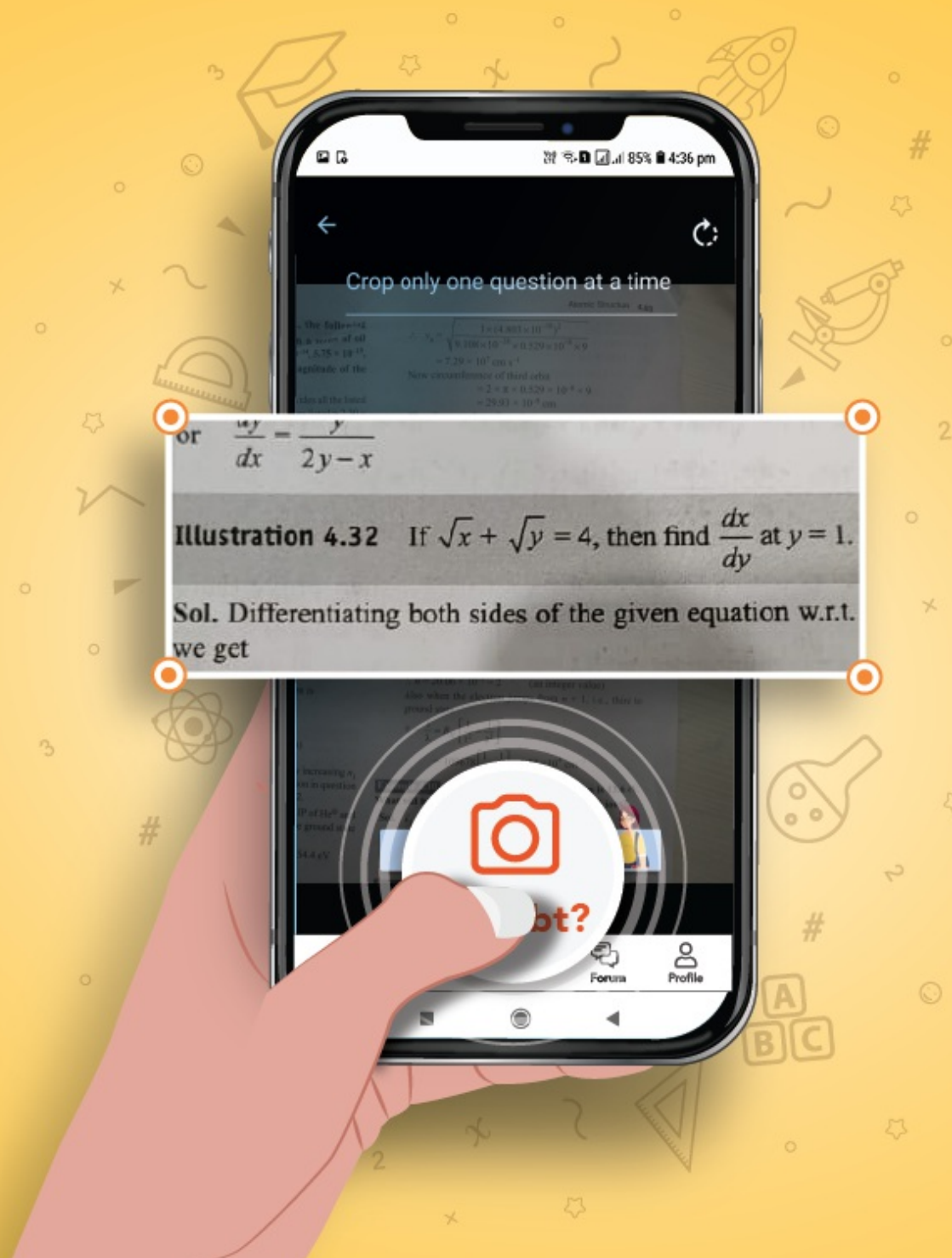
Watch Video Solution On Doubtnut App 

Apne doubts ka Instant video solution paayein

Abhi Doubtnut try karein!



Whatsapp your doubts on
 **8400400400**



 doubtnut