

[Download Doubtnut Now](#)

Q-1 - 10761360

Which of the following contraceptive methods Involve a role of hormone ?

- (A) Pills, Emergency contraceptives, Barrier methods
- (B) Lactational amenorrhea, Pills, Emergency contraceptives
- (C) Barrier method, Lactational amenorrhoea, Pills
- (D) CuT, Pills, Emergency contraceptives

CORRECT ANSWER: B

[Watch Video Solution On Doubtnut App](#) 

Which one of the following causes population explosion ?

(A) Decrease in death rate , maternal mortality rate
infant mortality rate

(B) Decrease in death rate and increase in maternal
mortality rate

(C) Decrease in infant mortality rate and increase in
death rate

(D) Decrease in infant mortality rate and decrease in the
number of people in reproductive age .

CORRECT ANSWER: A

Watch Video Solution On DoubtNut App 

Medical Termination of pregnancy (MTP) is considered safe up to how many weeks of pregnancy

(A) Six weeks

(B) Eight weeks

(C) Twelve weeks

(D) Eighteen weeks

CORRECT ANSWER: C

SOLUTION:

(c) MTPs are considered as safe upto twelve week of pregnancy.

Watch Video Solution On DoubtNut App 

Which of the following cannot be detected in a developing foetus
baby amniocentesis

- (A) Jaundice syndrome
 - (B) Klinefelter's
 - (C) Sex of foetus
 - (D) Down's syndrorome.
-

CORRECT ANSWER: A

Watch Video Solution On Doubtnut App 

Q-5 - 23780628

Amniocentesis is a process to

- (A) hereditary abnormality in enbryo
- (B) Cardiac ailments of embryo

(C) Errors in amino acid metabolism in embryo

(D) All the above .

CORRECT ANSWER: A

Watch Video Solution On DoubtNut App 

Q-6 - 17935631

Amniocentesis involves the analysis of

(A) Amnion

(B) Body fluid of amniotes

(C) Amino acids of protein

(D) Amniotic fluid

CORRECT ANSWER: D

SOLUTION:

(d) Amniocentesis involves the analysis of Amniotic fluid is withdrawn. It contains foetal skin cells and a number of proteins especially enzymes. The cells can be cultured in vitro for further examination.

Watch Video Solution On DoubtNut App 

Q-7 - 17935688

What is false for ZIFT

- (A) ZIFT-Zygote intra Fallopian Transfer
- (B) It follow IVF
- (C) Zygote early embryo
- (D) Embryos with more than 8 blastomers are transferred to the uterus

CORRECT ANSWER: D

Q-8 - 17935654

The method of directly injecting a sperm into ovum in assisted reproductive technology is called

(A) GIFT

(B) ZIFE

(C) ICSI

(D) ET

CORRECT ANSWER: C

Q-9 - 17935639

The technique called Gamete intra Fallopian Tranfer (GIFT) is

recommended for those females

(A) Whose cervical canal is too narrow to allow passage

for the sperms

(B) Who can not provide suitable environment for

fertilisation

(C) Who can not produce an ovum

(D) Who can not retain the foetus inside uterus

CORRECT ANSWER: C

Watch Video Solution On DoubtNut App 

Q-10 - 17935614

Assisted reproductive technology. IVF involves transfer of

(A) Zygote into the uterus

(B) Embryo with 16 blastomers into the fallopin tube

(C) Ovum into the fallopian tube

(D) Zygote into the fallopian tube

CORRECT ANSWER: D

SOLUTION:

(d) In IVF, zygote or the embryo upto 8-celled stage is transferred into the fallopian tube.

Watch Video Solution On Doubtnut App 

Q-11 - 17935620

Test tube baby means a baby born when

(A) It develops from a non-fertilized egg

(B) It developed in a test tube

(C) It is developed through tissue culture method

(D) The ovum is fertilised externally and thereafter
implanted in the uterus

CORRECT ANSWER: D

SOLUTION:

Test tube baby means ovum fertilised outside the mother
body and then implanted in uterus for growth and
development.

Watch Video Solution On Doubtnut App 

Q-12 - 17935624

Which of the following birth control measures can be considered as
the safest ?

(A) The rhythm method

(B) The use of physical barriers

(C) Termination of unwanted pregnancy

(D) Sterllization techniques

CORRECT ANSWER: D

Watch Video Solution On Doubtnut App 

Q-13 - 17935643

Which of the following is the most widely accepted method of contraception in india at present ?

(A) IUDs (Intra uterine devices)

(B) Cervical caps

(C) Tubectomy

(D) Diphrangms

CORRECT ANSWER: A

SOLUTION:

(a) The most widely accepted method of contraception in India is IUDs. Intra uterine device (Copper MiT) inhibit fertilization and help in birth control.

Watch Video Solution On DoubtNut App 

Q-14 - 23780746

In case of a couple where the male is having a very low sperm count, which technique will be suitable for fertilisation

- (A) Intrauterine transfer
 - (B) Gamete intracytoplasmic fallopian transfer
 - (C) Artificial insemination
 - (D) Intracytoplasmic sperm injection
-

CORRECT ANSWER: D

Watch Video Solution On Doubtnut App 

Q-15 - 17935622

Surrogate mother is used for

- (A) Induction of lactation
- (B) Artificially inseminated female
- (C) Future mother with transplanted embryo
- (D) Artificial insemination

CORRECT ANSWER: C

SOLUTION:

(c) Surrogate mother is women who bears a baby for another couple

Watch Video Solution On Doubtnut App 

Q-16 - 23780753

Implanon is

- (A) Morning -after pill
- (B) Contraceptive pill
- (C) Injectable contraceptive
- (D) Contraceptive implant

Watch Video Solution On Doubtnut App 

Q-17 - 23780748

Oilgospermia is caused by

- (A) Alcohloism

(B) STD

(C) Damage to prosate or seminal vesicles

(D) All the above .

Watch Video Solution On Doubtnut App 

Q-18 - 55656868

Government of india legalised MTP in

(A) 1971

(B) 1998

(C) 2001

(D) 2006

CORRECT ANSWER: A

Watch Video Solution On Doubtnut App 

Progestasert is

- (A) IUD
- (B) Oral pill
- (C) Male condom
- (D) female condom.

Watch Video Solution On Doubtnut App 

Artificial insemination means

- (A) Introduction of sperms of a healthy donor directly into the ovary
- (B) Transer of sperms of a healthy donor to a test tube

containing ova

(C) Transfer of sperms of husband to a test tube

containing ova

(D) Artificial introduction of sperm of a healthy donor into the vagina

CORRECT ANSWER: D

Watch Video Solution On Doubtnut App 

Q-21 - 55656854

Incubation period in AIDS is:-

(A) 4 months to 8 years

(B) 5 months to 9 years

(C) 6 months to 10 years

(D) 7 months to 11 years

CORRECT ANSWER: C

Watch Video Solution On Doubtnut App 

Q-22 - 55656836

Coitus interruptus method of birth control involves

(A) uterus

(B) vesdeferens

(C) withdrawal of penis just before male ejaculates

(D) barrier method

CORRECT ANSWER: C

Watch Video Solution On Doubtnut App 

Q-23 - 55656870

HIV attacks

- (A) RBCs
 - (B) blood platelets
 - (C) helper T cells
 - (D) B-cells
-

CORRECT ANSWER: C

Watch Video Solution On Doubtnut App 

Q-24 - 55656857

Study of population trends is

- (A) kalography
- (B) phychobiology
- (C) biography

(D) demography

CORRECT ANSWER: D

Watch Video Solution On Doubtnut App 

Q-25 - 55656841

Spermicides kill the sperms in the

(A) vagina

(B) cervix

(C) fallopian tubes

(D) both (1) and (2)

CORRECT ANSWER: D

Watch Video Solution On Doubtnut App 

Q-26 - 23780754

Fem shield is a

- (A) Barrier contraceptive
- (B) chemical contraceptive
- (C) Emergency contraceptive
- (D) Injectable contraceptive

Watch Video Solution On Doubtnut App 

Q-27 - 17935629

Daily oral contraceptive pill is

- (A) Mala C
 - (B) Mala N and Mala D
 - (C) Mala A
 - (D) Mala D
-

CORRECT ANSWER: B

Watch Video Solution On Doubtnut App 

Q-28 - 17935628

Trade name of weekly oral contraceptive pill is

- (A) Mala
 - (B) Saheli
 - (C) Mala A
 - (D) Mala D
-

CORRECT ANSWER: B

Watch Video Solution On Doubtnut App 

Q-29 - 23780749

Elevation of prolactin level in normal female causes

(A) Non-implantion

(B) Non- ovulation

(C) Oligo- ovulation

(D) Ovarian cysts.

Watch Video Solution On DoubtNut App 

Q-30 - 55656882

Which of the following is antifertility vitamin?

(A) Vitamin A

(B) Vitamin C

(C) Vitamin E

(D) Vitamin D

CORRECT ANSWER: C

Q-31 - 23780705

Oral contraceptive pill females developed at CDRI lucknow is

(A) male -D

(B) LNG-20

(C) Saheli

(D) Mala-A

CORRECT ANSWER: C

Q-32 - 23780687

Which of the following is hormone releasing IUD ?

(A) CU-T

(B) Cu 7

(C) LNG -20

(D) Multiload 475

CORRECT ANSWER: C

Watch Video Solution On Doubtnut App 

Q-33 - 17935637

Cu ions released from copper releasing intrauterine devices (IUDs)

(A) Prevent ovulation

(B) Make uterus unsuitable for implantation

(C) Increase phagocytosis of sperms

(D) Supperss sperm motility

CORRECT ANSWER: C,D

SOLUTION:

(cd) Intra Uterine Devices (IUDs) are inserted by doctors in the uterus through Vagina. These intra Uterine Devices are available as the non-medicated IUDs (e.g. Lippes loop) copper releasing IUDs (C μ T, Cu7, multiload 375) and the hormone releasing phagocytosis of sperms within the uterus and the Cu ions released suppress sperm motility and the fertilizing capacity of sperms.

Watch Video Solution On DoubtNut App 

Q-34 - 34596855

Which of the following is incorrect regarding vasectomy?

(A) no sperm occurs in seminal fluid

(B) no sperm occurs in epididymis

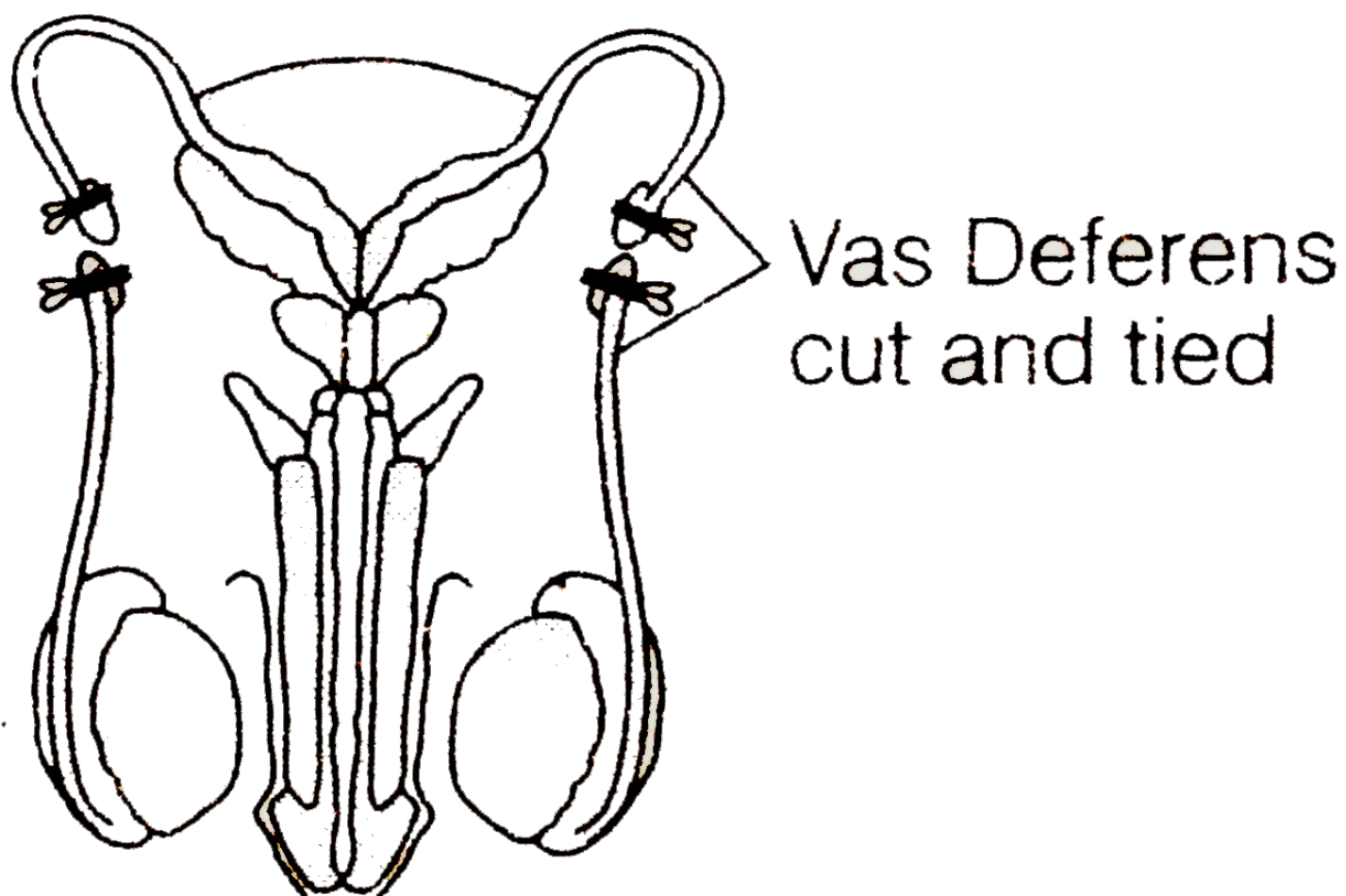
(C) vasa deferentia is cut and tied

(D) Irreversible sterility

CORRECT ANSWER: B

SOLUTION:

Epididymis is an accessory duct present in the male reproductive system.



Vasectomy

Sperms produced by testes are sent here by

vasa deferentia and are temporarily stored here. These sperms do not reach to seminal vesicle when vas deferens is cut and tied in vasectomy.

Watch Video Solution On DoubtNut App 

Q-35 - 23780646

The non-medicated IUD is :

- (A) Copper-T
- (B) Progestasert
- (C) Lippes loop
- (D) LNG-20

CORRECT ANSWER: C

Watch Video Solution On DoubtNut App 

Progesterone pill helps in preventing pregnancy by allowing

(A) Ova formation

(B) Fertilization

(C) Implantation

(D) None of these

CORRECT ANSWER: A

Watch Video Solution On DoubtNut App 

Sequential pills contain

(A) a high dose of oestrogen

(B) moderate dose of progesterone

(C) both (1) and (2)

(D) high dose of FHS and LH

CORRECT ANSWER: C

Watch Video Solution On Doubtnut App 

Q-38 - 34596912

In a population, unrestricted reproductive capacity is called

(A) biotic potential

(B) fertility

(C) carrying capacity

(D) birth rate

CORRECT ANSWER: A

SOLUTION:

The biotic or innate capacity to increase of a population refers to the maximum rate of increase in the population that can possibly occur under ideal conditions (unlimited resources, no hindrances).

Watch Video Solution On Doubtnut App 

Q-39 - 23780606

A steritisation technique is

- (A) Loop
- (B) Disphragm
- (C) Tubectomy
- (D) Cervical cap.

CORRECT ANSWER: D

Q-40 - 23780696

which contraceptive device makes uterus unsuitable for
implantation

(A) Progestasert

(B) CuT

(C) Lippe's loop

(D) Multiload.

CORRECT ANSWER: A

Q-41 - 17935623

Surgical removal of uterus is called

(A) Vasectomy

(B) Tubectomy

(C) Hysterectomy

(D) Anantomy

CORRECT ANSWER: C

SOLUTION:

(c) Surgical removal of unerus is called hysterectomy.

Vasectomy is surgery of seminl tube or tubectomy is surgenry of fallopian tube. Aantomy is the internal structure.

Watch Video Solution On Doubtnut App 

Q-42 - 17935617

Surgical removal of testes is known as

(A) Testectomy

(B) Gonadectomy

(C) Castration

(D) None

CORRECT ANSWER: C

SOLUTION:

(c) Permanent method of birth control in which either testes are surgically removed, called castration.

Watch Video Solution On Doubtnut App 

Q-43 - 17935680

Surgical methods of contraception prevent

(A) Gamete formation

(B) Gamete motility

(C) Both (a) and (b)

(D) Spermatogenesis only

CORRECT ANSWER: B

Watch Video Solution On Doubtnut App 

Q-44 - 23780756

Toxic cytokines are produced by

(A) Oral pill

(B) CU-T

(C) Saheli

(D) Sponge

Watch Video Solution On Doubtnut App 

A population 'crash' is called catastrophic control of population. It was termed positive check by an economist

(A) Malthus

(B) Darwin

(C) Lamarch

(D) Mendel

CORRECT ANSWER: A

Watch Video Solution On Doubtnut App 

Lactational amenorrhoea prevents

(A) Secretion of milk from breast

(B) Conception

(C) secretion of prolactin

(D) Spermatogenesis

CORRECT ANSWER: B

Watch Video Solution On Doubtnut App 

Q-47 - 23780735

Match and find the correct option

I

(a) Contraceptive

(b) Condom

(c) Vasectomy

(d) Copper-T

II

(i) prevents sperms reaching female

(ii) inhibits ovulation and imp

(iii) Increase phagocytosis of

(iv) Blocks gamete transport

(A)

$a - iv, b - i, c - ii, d$
 $- iii$

(B)

$a - i, b - ii, c - iii, d$
 $- iv$

(C)

$a - ii, b - i, c - iii, d$
 $- iv$

(D)

$a - ii, b - i, c - iv, d$
 $- iii$

CORRECT ANSWER: D

Watch Video Solution On Doubtnut App 

Q-48 - 17935681

Birth control pills check ovulation in female by inhibiting the secretion of

(A) Follicle stimulating hormone

(B) Luteinizing hormone

(C) Both

(D) None

CORRECT ANSWER: C

Watch Video Solution On Doubtnut App 

Q-49 - 34596926

Human population growth in India.

(A) tends to follow a sigmoid curve as in case of many other animal species

(B) tends to reach zero population growth as in case of some animal species

(C) can be reduced by permitting natural calamities and enforcing birth control measures

(D) can be regulated by following the national programme of family planning

CORRECT ANSWER: D

SOLUTION:

Through India is very crowded and over populated country but still human population can be regulated by following the National programme of family planning.

Watch Video Solution On Doubtnut App 

Q-50 - 23780750

Chancroid is a sexually transmitted disease caused by

(A) Trichomanas

(B) Treponema

(C) Haemophilus

(D) Neisseria

Watch Video Solution On DoubtNut App 

Q-51 - 23780728

match and choose the correct option

I

(*p*) Gonorrhoea

(*q*) trichomoniasis

(*r*) Hepatitis B

(*s*) syphilis

II

(*i*)

Loss of appetite, pain upper right

(*ii*)

white patches on tongue or roof of l

(*iii*)

Pain while passing urine

(*iv*)

Itching in and around v

(A)

$p - i, q - iv, r - ii, s$
 $- iii$

(B)

$p - iv, q - iii, r - ii, s$
 $- i$

(C)

$p - iii, q - iv, r - i, s$
 $- ii$

(D)

$p - iii, q - i, r - ii, s$
 $- iv$

CORRECT ANSWER: C

Watch Video Solution On Doubtnut App 

Q-52 - 17935659

Intensity lactating mothers do not generally conceive due to the

- (A) Suppression of gonadotropins
 - (B) Hyper secretion of gonadotropins
 - (C) Suppression of gametic transport
 - (D) Suppression of fertilization
-

CORRECT ANSWER: A

Watch Video Solution On Doubtnut App 

In which technique, the donor semen is artificially introduced in to the uterus?

- (A) Intravaginal insemination
 - (B) Intrauterine insemination
 - (C) Gamete intrafallopian transfer
 - (D) interacytoplasmic sperm injection
-

CORRECT ANSWER: B

Watch Video Solution On Doubtnut App 

At what stage the embryo is implanted in the uterus

(A) Immediate after fertilization

(B) After 16 cells stage

(C) After 64 cells stage

(D) After 32 cells stage

CORRECT ANSWER: D

Watch Video Solution On Doubtnut App 

Q-55 - 23780724

match the following and find the correct combination

- | | |
|-------------------|---------------------------------|
| (a) syphilis | (i) human papilloma virus |
| (b) genital warts | (ii) <i>HBV</i> |
| (c) Hepatitis -B | (iii) <i>treponema pallidum</i> |
| (d) Gonorrhoea | (iv) <i>HSV</i> |
| | (v) <i>Neisseria</i> |

(A)

$a - ii, b - i, c - iv, d$
 $- v$

(B)

$a - iii, b - i, c - iv, d - v$

(C)

$a - iii, b - i, c - ii, d - v$

(D)

$a - ii, b - iii, c - iv, d - v$

CORRECT ANSWER: C

Watch Video Solution On Doubtnut App 

Q-56 - 23780694

The appearance of rashes all over the body are the symptoms of:

(A) Gonorrhoea

(B) AIDS

(C) Syphilis

(D) Fever

CORRECT ANSWER: C

Watch Video Solution On Doubtnut App 

Q-57 - 23780698

which of the following sexually transmitted disease is caused by yeast

(A) Candidasis

(B) Scabies

(C) Enterbisisis

(D) Syphilis

CORRECT ANSWER: A

Watch Video Solution On Doubtnut App 

Profuse, yellowish, greenish frothy smelling discharge from vagina is due to infection of

- (A) *Troponema pallidum*
- (B) *Chlamydia*
- (C) *Trichomonas vaginalis*
- (D) *Neisseria*

CORRECT ANSWER: C

SOLUTION:

(C) Trichomoniasis is caused by *Trichomonas vaginalis*. The parasite affects both males and female. In females it causes vaginitis with foul smelling. Yellowish vaginal discharge and during sensation. In males it

causes urethritis epididymitis and prostatitis resulting in pain and burning sensation. It is transmitted through sexual intercourse.

Watch Video Solution On DoubtNut App 

Q-59 - 23780684

Which one of the following statements is correct regarding sexually Transmitted Diseases (STD)

- (A) Haemophilia is one of the STD
 - (B) Genital herpes and sickle cell anaemia are both STD
 - (C) Chances of a five years old boy contracting a STD are very little
 - (D) A Person may contract syphilis by sharing milk with one already suffering from disease .
-

CORRECT ANSWER: C

Watch Video Solution On Doubtnut App 

Q-60 - 17935596

Genital warts are due to sexually transmitted disease spread by

- (A) Herpes virus
- (B) Papilloma virus
- (C) Hepatitis A
- (D) Trichomonas

CORRECT ANSWER: B

SOLUTION:

- (b) Genital Warts is caused by human papilloma virus.
- Symptoms include benign, hard outgrowths with horny

surface (warts) on over the skin and mucosal surface of external genitalia and perianal area. It spreads through sexual intercourse with carriers of the viruses of this disease.

Watch Video Solution On DoubtNut App 

Q-61 - 23780655

If for some reason, the vesiciferentia in the human reproductive system get blocked, the gametes will not be transported from

- (A) Ovary to uterus
- (B) Vagina to uterus
- (C) Testis to epididymis
- (D) Epididymis to vas deferens

CORRECT ANSWER: C

Apne doubts ka Instant video solution paayein

Abhi Doubtnut try karein!



Whatsapp your doubts on
 **8400400400**

