

[Download Doubtnut Now](#)

Q-1 - 12979964

Which of the classifications of drugs is useful for doctors?

- (A) On the basis of molecular targets
- (B) On the basis of chemical structure
- (C) On the basis of drug action
- (D) On the basis of pharmacological effect

---

CORRECT ANSWER: D

---

SOLUTION:

Classification based on pharmacological effect of the drugs is useful for doctors because it provides them thw

whole range of drugs available for the treatment of a particular type of problem.

Watch Video Solution On Doubtnut App 

Q-2 - 12980025

Which of the following is an analgesic?

(A) Chloromycetin

(B) Novalgin

(C) Penicillin

(D) Streptomycin

---

CORRECT ANSWER: B

---

SOLUTION:

Novalgin (analgin) is a well known non-narcotic (non-

addictive) analgesics. It also acts as antipyretic. Others are antibiotics. Penicillin is the first antibiotic.

Streptomycin is specifically used for tuberculosis.

Watch Video Solution On DoubtNut App 

Q-3 - 12581031

Which of the following is analgesic ?

(A) Chloramphenicol

(B) Novalgin

(C) Penicillin

(D) Streptomycin

---

CORRECT ANSWER: B

---

SOLUTION:

Novalgin is an analgesic. It is a fact.

Watch Video Solution On Doubtnut App 

Q-4 - 12580864

Which of the following is a non-narcotic analgesic ?

(A) Morphine

(B) Codeine

(C) Heroin

(D) aspirin

---

CORRECT ANSWER: D

---

SOLUTION:

Aspirin is a non-narcotic analgesic.

Watch Video Solution On Doubtnut App 

Bithional is generally added to the soaps as an additive to function as a / an

(A) buffering agent

(B) antiseptic

(C) softener

(D) dryer

---

CORRECT ANSWER: B

---

SOLUTION:

Antiseptic

Watch Video Solution On DoubtNut App 

Artificial sweetener which is stable under cold conditions only is

(A) Saccharine

(B) Sucrolose

(C) Aspartame

(D) Alitame

---

CORRECT ANSWER: C

---

SOLUTION:

It decomposes at baking or cooking temperatures and hence can be used only in cold food and soft drinks

Further more, people suffering from the disease phenyl ketoneurea cannot use aspartame because their metabolism causes the conversion of aspartame to phenylpyruvic acid, Accumulation of phenylpyruvic acid is harmful especially to infants due to brain damage and

mental retardation. Phenylketoneurea is a genetically determined defect in the metabolism of phenylalanine (an amino acid contained in protein). Phenylalanine accumulates in the body, and may cause mental deficiency.

Watch Video Solution On Doubtnut App 

Q-7 - 12580702

Artificial sweetener used in soft drinks is:

- (A) glucose
- (B) fructose
- (C) Cellulose
- (D) aspartame

---

CORRECT ANSWER: D

---

## SOLUTION:

It is 160 times sweeter than sucrose.

Watch Video Solution On Doubtnut App 

Q-8 - 19124525

Which artificial sweetener contains chlorine?

(A) Aspartame

(B) Saccharin

(C) Sucralose

(D) Alitame

---

CORRECT ANSWER: C

Watch Video Solution On Doubtnut App 

Q-9 - 12581029



Antiseptics and disinfectants either kill or prevent growth of microorganism. Identify which of the following statements is not true :

- (A) Chlorine and iodine are used as strong disinfectants
- (B) Disinfectants harm the living tissues
- (C) Dilute solutions of boric acid and hydrogen peroxide are strong antiseptics
- (D) A 0.2 % solution of phenol is an antiseptic while 1 % solution acts as a disinfectant

---

CORRECT ANSWER: C

---

SOLUTION:

Dilute solutions of boric acid and hydrogen peroxide are weak antiseptics.

---

Q-10 - 12980029

Chloramphenicol is an

- (A) Antibiotic - broad spectrum
  - (B) antifertility drug
  - (C) antihistamine
  - (D) antiseptic and disinfectant
- 

**CORRECT ANSWER: A**

---

**SOLUTION:**

Chloramphenicol is a broad spectrum antibiotic. It is rapidly absorbed from the gastrointestinal tract and hence can be given orally in case of typhoid, dysentery, acute fever, certain forms of urinary infections,

meningitis, and pneumonitis.

Watch Video Solution On DoubtNut App 

Q-11 - 12581027

Which one of the following is employed as antihistamine ?

- (A) Omeprazole
- (B) Chloramphenicol
- (C) Diphenylhydramine
- (D) Norfloxacin

---

CORRECT ANSWER: C

---

SOLUTION:

Commonly used antihistamines are promethazine, chlorpheniramine and diphenylhydramine.

---

Q-12 - 12581113

Which one of the following is employed as a tranquilizer ?

- (A) Naproxen
- (B) Tetracycline
- (C) Chlorpheniramine
- (D) Equanil

---

CORRECT ANSWER: D

---

SOLUTION:

Equanil is used for the treatment of stress and mental diseases i.e., as a tranquilizer.

Which one of the following is employed as a tranquilizer ?

(A) Chlorpheninamine

(B) Equanil

(C) Naproxen

(D) Tetracycline

---

CORRECT ANSWER: B

---

SOLUTION:

Chlorpheninamine is an antihistamine.

Naproxen is an analgesic.

Tetracycline is an antibiotic.

Equanil is a tranquilizer.

Aspirin is an acetylation product of

- (A) *m* — hydroxybenzoic acid
- (B) *o* — hydroxybenzoic acid
- (C) *p* — dihydroxybenzene
- (D) *o* — dihydroxybenzene

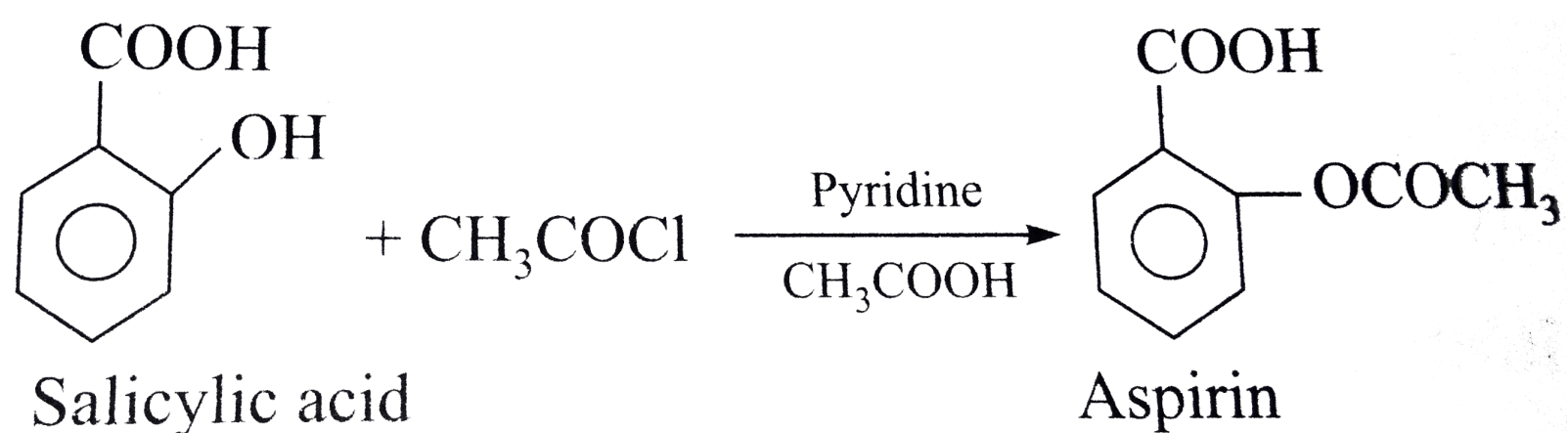
---

CORRECT ANSWER: B

---

SOLUTION:

Aspirin ( acetyl salicylic acid ) is obtained by heating salicylic acid (*o* — hydroxybenzoic acid) with acetyl chloride and glacial acetic acid.



Q-15 - 12980035

Which of the following can possibly be used as analgesic without causing addiction and mood modification?

- (A) Morphine
- (B) Diazepam
- (C) Tetrahydrocannabinol
- (D) N-acetyl-para-aminophenol

---

CORRECT ANSWER: D

---

SOLUTION:

*N*-acetyl-para-aminophenol (paracetamol) is a non-narcotic (non-addictive) analgesic:

Learn the structure of paracetamol. It has been asked in

various exams.



Watch Video Solution On Doubtnut App 

Q-16 - 12980036

Commonly used Dettol' is mixture of

(A) o-Chlorophenoxylenol + terpineol



(B) o-Cresol + terpineol

(C) phenol + terpineol

(D) chloroxylenol + terpineol

---

CORRECT ANSWER: D

---

SOLUTION:

Dettol, a well known antiseptic is a mixture of chloroxylenol and  $\alpha$ - terpineol in a suitable solvent



Watch Video Solution On Doubtnut App 

Q-17 - 12581032

Mixture of chloroxylenol and terpineol acts as :

(A) antiseptic

(B) antipyretic

(C) antibiotic

(D) analgesic

---

CORRECT ANSWER: A

---

SOLUTION:

Antiseptic ( dettol )

Watch Video Solution On Doubtnut App 

Q-18 - 12980038

Which of the following proteins destroy the antigen when it enters in body cell?

(A) Antibiotic

(B) Insulin

(C) Chromoprotein

(D) Phosphorprotein

---

CORRECT ANSWER: A

---

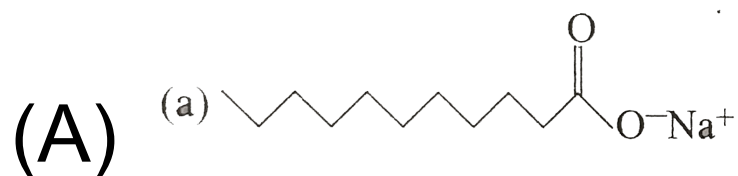
SOLUTION:

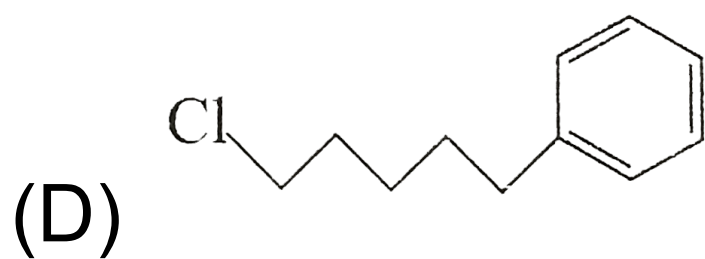
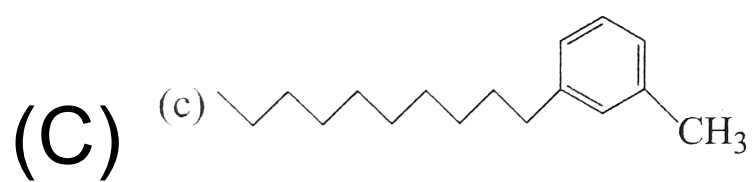
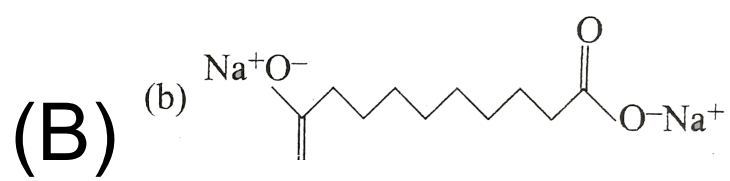
Antibiotics (anti = against, biotic = life) are chemical substances (prepared wholly or partially by chemical synthesis), which in low concentration, either kill or inhibit the growth of microorganisms by intervening in their metabolic processes.

Watch Video Solution On DoubtNut App 

Q-19 - 19124493

Which of the following can disperse benzene in water?





---

CORRECT ANSWER: C

Watch Video Solution On Doubtnut App 

Q-20 - 12980021

The oxidant which is used as an antiseptic is



CORRECT ANSWER: C

---

SOLUTION:

Potassium permanganate, a powerful antiseptic, is used as an antiseptic in dilute solutions.

Watch Video Solution On Doubtnut App 

Q-21 - 12980022

Antiseptic Chloroxylenol is

- (A) 4 - chloro - 2,5 - dimethylphenol
  - (B) 3 - chloro - 4,5 - dimethylphenol
  - (C) 4 - chloro - 3,5 - dimethylphenol
  - (D) 5 - chloro - 3,4 - dimethylphenol
- 

CORRECT ANSWER: C

---

SOLUTION:

Chloroxylenol has the following structure

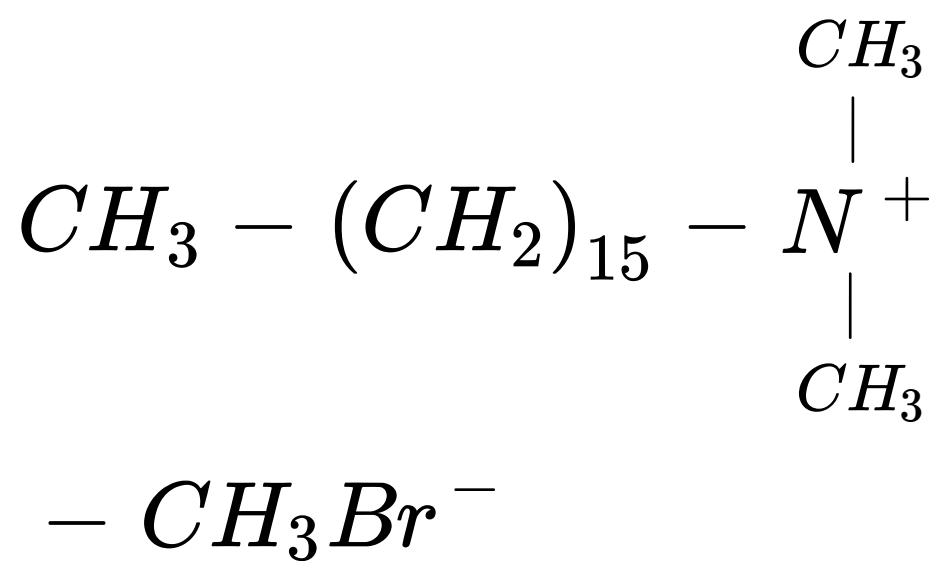


Watch Video Solution On Doubtnut App 

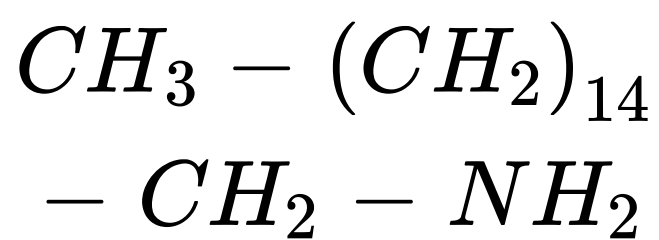
Q-22 - 12659978

Which one of the following is not a surfactant?

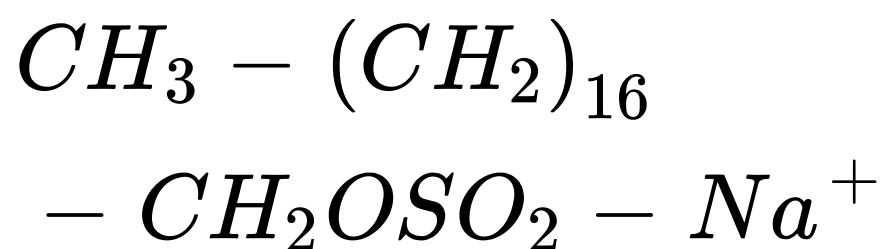
(A)



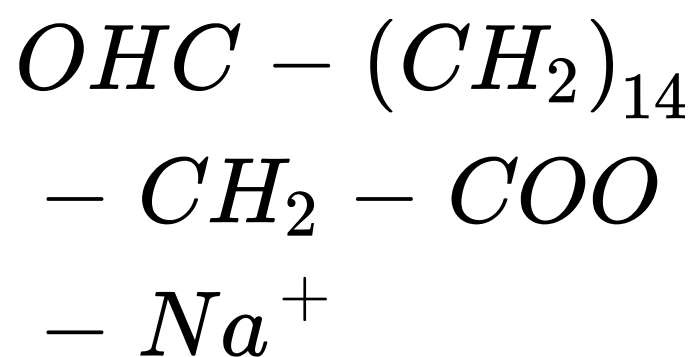
(B)



(C)



(D)



---

CORRECT ANSWER: B

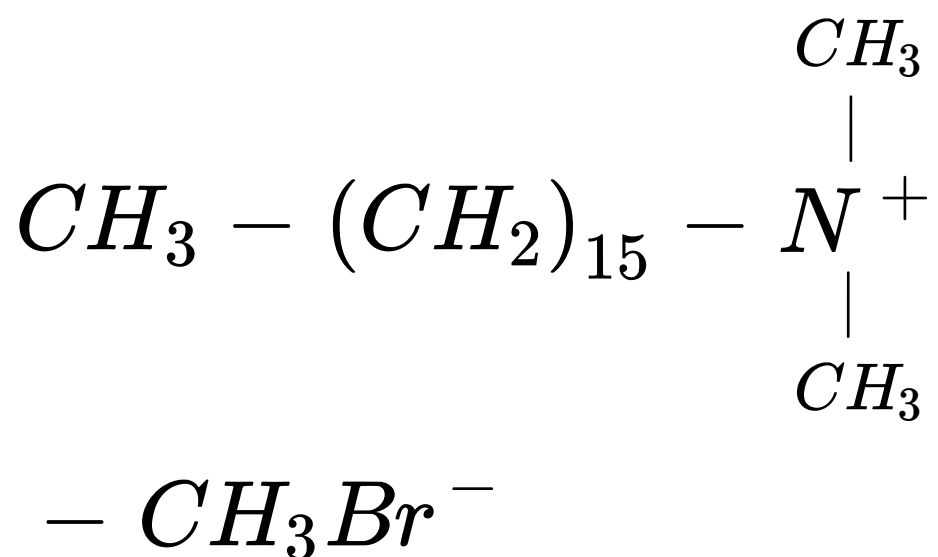
---

SOLUTION:

Surfactant are those which have charge on their tail e.g.



cetyltrimethyl ammonium bromide.



Surfactants are those, which dissociate in water to yield positively charge ion.

Watch Video Solution On Doubtnut App 

Q-23 - 19124496

Which of the following is bacteriostatic?

- (A) Penicillin
- (B) Erythromycin
- (C) Aminoglycoside
- (D) Ofloxacin

CORRECT ANSWER: B

Watch Video Solution On Doubtnut App 

Q-24 - 12980015

The role of phosphate in detergent powder is to

- (A) provide whiteness to the fabric
- (B) remove  $Ca^{2+}$  and  $Mg^{2+}$  ions from the water that cause the hardness of water
- (C) Control pH level of the detergent water mixture.
- (D) form solid detergent as phosphate less detergent are liquid in nature.

---

CORRECT ANSWER: C

---

SOLUTION:

Phosphates were added to commercial detergents for various purposes. They complexed the metal ions that contributed to water hardness and kept them dissolved, controlled acidity and influenced microbial formation. The eutrophication in rivers and streams that receive sewage. This is a condition (not related to coliforms) in which an overgrowth of vegetation is caused by the high concentration of phosphorus, a plant nutrient. This overgrowth and the subsequent decay of the dead plants lead to decreased dissolved  $O_2$  in the water, which causes the gradual elimination of marine life.

Watch Video Solution On DoubtNut App 

Column I	Column II
(a) Pencillin	<i>p.</i> Antiseptic
(b) Chloramphenicol	<i>q.</i> Antibiotic
(c) Phenol	<i>r.</i> Bactericidal
(d) Chloroxylenol	<i>s.</i> Disinfectant

CORRECT ANSWER:

(A)  $RA\mathbb{R}Q, R$ ; (B)  $RA$

$\mathbb{R}Q$ ; (C)  $RA\mathbb{R}P, S$ ;

(D)  $RA\mathbb{R}P$ ;

Watch Video Solution On Doubtnut App 

Q-26 - 20599795

Name a substance which can be used as an antiseptic as well as disinfectant.

SOLUTION:

Phenol can be used as an antiseptic as well as a disinfectant. 0.2 percent solution of phenol is used as an

antiseptic, while 1 per cent of its solution is used as a disinfectant.

Watch Video Solution On Doubtnut App 

Q-27 - 14947909

Which statement comparing the soap sodium stearate, and the detergent sodium lauryl sulfate is not true ?

- (A) both form micelles in water dispersion
- (B) at  $pH$  below 6.5 the soap precipitates, the detergent does not
- (C) the soap is less alkaline ( basic ) than the detergent
- (D) calcium salts of the soap are relatively insoluble

---

CORRECT ANSWER: 3

---

SOLUTION:

Hydrolysis of carboxylate ion makes the solution strongly alkaline.

Watch Video Solution On DoubtNut App 

Q-28 - 12980013

Heroin is a derivative of morphine. Chemically, it is

(A) morphine monoacetate

(B) morphine diacetate

(C) morphine triacetate

(D) morphine tetracetate

---

CORRECT ANSWER: B

---

SOLUTION:

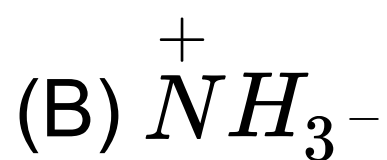
Morphine ( $C_{17}H_{19}NO_3$ ) is the principal alkaloid of

opium. It acts both as a base and as a phenol and reacts to form methyldmorphine (codeine and diacetylmorphine (diamorphine or heroin)).

Watch Video Solution On DoubtNut App 

Q-29 - 12980012

Which of the following functional groups of the amino acid residue L - serine of the protein present on the active site of enzyme attacks the substance molecule to carry out the chemical reaction?



---

CORRECT ANSWER: C

---

## SOLUTION:



The part of the amino acid which lies outside the box acts as a nucleophile in enzyme catalyzed reactions but the part of the amino acid which is enclosed in the box is involved in the formation of peptide bond in protein molecules.

Watch Video Solution On Doubtnut App 



Which of the following sweeteners has the lowest sweetness value

- (A) Alitame
  - (B) Sucrolose
  - (C) Sacchrin
  - (D) Aspartame
- 

CORRECT ANSWER: D

---

SOLUTION:

Aspartame is 100 times sweeter than sources.

Saccharin is 550 times sweeter then sources.

Sucrolose is 600 times sweeter than sources.

Alitame is 2000 times sweeter than sucrose.

Detergents are known to pollute rivers and water ways. However, detergents can be made biodegradable and pollution free by taking :

- (A) cyclic hydrocarbon chain
  - (B) shorter hydrocarbon chain
  - (C) unbranched hydrocarbon chain
  - (D) hydrocarbon with more branching
- 

**CORRECT ANSWER: B**

Watch Video Solution On Doubtnut App 

Most commonly used tranquillizers are derivatives of

(A) barbituric acid

(B) hippuric acid

(C) sorbic acid

(D) salicylic acid

---

CORRECT ANSWER: A

---

SOLUTION:

Barbituric acid and its derivatives are well known as tranquilizers which we are used for the treatment of mental disease.

Watch Video Solution On Doubtnut App 

Q-33 - 12980006

The active chemical present in Iodex which gives relief from pain in sciatica and rheumatism is

(A) phenyl salicylate

(B) methyl salicylate

(C) ethyl salicylate

(D) salicylic acid

---

CORRECT ANSWER: D

---

SOLUTION:

Methyl salicylate has the general medicinal properties of the salicylates, and is applied either alone or with other analgesics for easing the pain of lumbago, rheumatism and sciatica.

Phenyl salicylate (commonly called solol) is used as an internal antiseptica.

Watch Video Solution On Doubtnut App 

Which of the following antibiotics is effective in treatment of pneumonia, and bronchitis?

(A) Chloramphenicol

(B) Penicillin

(C) Amoxycillin

(D) Chloromycetin

---

CORRECT ANSWER: D

---

SOLUTION:

Chloromycetin is a broad spectrum antibiotic.

Watch Video Solution On DoubtNut App 

Which of the following is used as an antiulcer drug?

(A) Pamaquine

(B) Pethidine

(C) Renitidine

(D) Sulphadizine

---

CORRECT ANSWER: C

---

SOLUTION:

Over production of hydrochloric acid (required for digestion) in the stomach causes irritation and pain. In severe cases, ulcers are developed in the stomach.

Histamine (a chemical substance) stimulates the recreation of hydrochloric acid in the stomach.

Renitidine, an anitulcer drgu. prevets the interaction of histamine with the receptors present in the stomach wall.

The this results in release of lesser amount of  $HCl$ .

Watch Video Solution On DoubtNut App 

Q-36 - 12979999

Which of the following interactions bind the substrate molecules to the amino acid residues of the protein present on the active site of the enzyme?

- (i) Hydrogen bonding
- (ii) ionic, bonding
- (iii) Dipole, dipole interaction
- (iv) van der Waals interaction

(A) (ii),(iii)

(B) (iii),(iv)

(C) (i),(ii),(iii)

(D) (i),(ii),(iii),(iv)

CORRECT ANSWER: D

---

SOLUTION:

A variety of interactions are involved. The binding forces should be strong enough to hold the substance, long enough so that enzyme can catalyze the reaction, but weak enough to allow the products to depart after their formation.

[Watch Video Solution On DoubtNut App](#) 

Q-37 - 12979988

Which of the following sweetening agents is used in the preparation of sweets for a diabetic patient?

(A) Cyclamate

(B) L-Glucose



(C) Aspartame

(D) Saccharin

---

CORRECT ANSWER: D

---

SOLUTION:

It is not biodegradable than sugar on mass to mass basis. It is not biodegradable and does not have any calorific value. It is excreted as such in urine.

Watch Video Solution On DoubtNut App 

Q-38 - 12979990

Which of the following food preservatives is metabolized to hippuric acid?

(A) Sodium propionate

(B) Sodium carbonate

(C) Sodium benzoate

(D) All of these

---

CORRECT ANSWER: C

---

SOLUTION:

The most common preservative, sodium benzoate

( $C_6H_5CO_2Na$ ) is metabolized by conversion to

hippuric acid,

$C_6H_5CONHCH_2CO_2H$

which ultimately is excreted in the urine. It is also used

as corrosion inhibitor and medicinally as an antiseptic

and for gout and rheumatism.

Watch Video Solution On DoubtNut App 

Q-39 - 12979992

Anionic detergents are

(A) Sodium alkanesulphonates

(B) Sodium alkyl sulphates

(C) Sodium alkylbenzene sulphonates

(D) All of these

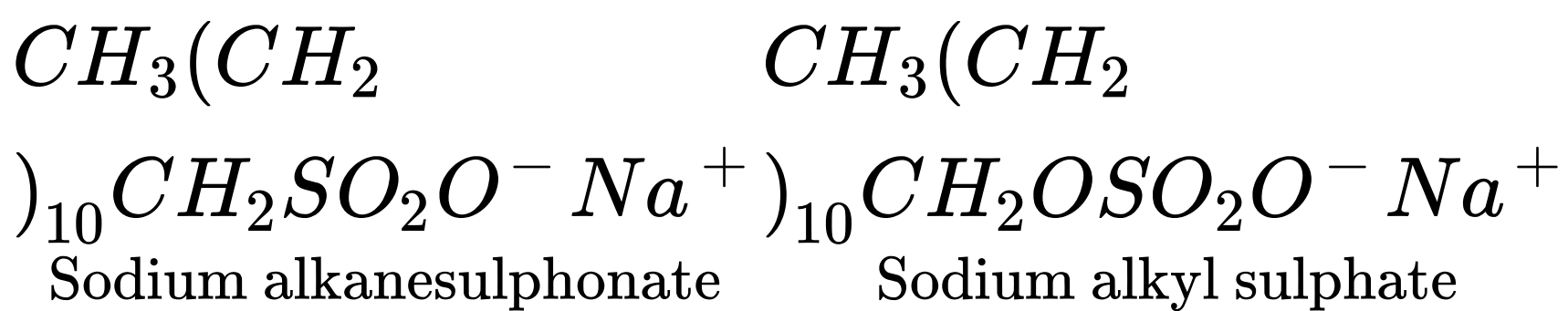
---

CORRECT ANSWER: D

---

SOLUTION:

Anionic detergents are sodium salts of sulphonated long chain alcohols or hydrocarbons:





Watch Video Solution On Doubtnut App 

Q-40 - 12979994

Non-ionic detergent can be prepared by reaction of \_\_\_\_\_ with ethylene oxide

(A) aldehydes

(B) ketones

(C) carboxylic

(D) alcohols

---

**CORRECT ANSWER: D**

---

**SOLUTION:**

Treatment of alcohols with ethylene oxide yields a non-ionic detergent:

Hydrogen bonding to the numerous oxygen atoms makes the polyether end of the molecule water soluble.

Alternatively, the ethoxylates can be converted into sulphates and used in the form of the Na salts.



Watch Video Solution On Doubtnut App 

Q-41 - 12979970

Which of the following antacids treats only the symptoms but not the cause?

(A) Cimetidine

(B) Ranitidine

(C) Zantac

(D) Magnesium hydroxide

---

CORRECT ANSWER: D

---

SOLUTION:

Our stomach produces hydrochloric acid, which helps in the digestion of food without harming the stomach.

During indigestion the stomach produces, too much acid and this causes pain and irritation. To get rid of the pain, people use base called antacids.

Antacids, which neutralise the excess acid treat only the symptoms but not the cause. Magnesium hydroxide (milk of magnesia), a mild base, is often used for this purpose. On the other hand, cimetidine and ranitidine prevent the release of excess hydrochloric acid in the

stomach. Earlier, cimetidine (Tegamet) was the largest selling drug in the world but these days the most widely used drug of this type is ranitidine (Zantac).

[Watch Video Solution On DoubtNut App](#) 

Q-42 - 19124589

Amongst the following the maximum number of antacids is \_\_\_\_\_.

Ranitidine, cimetidine, omeprazole, chloramphenicol, chlorpheniramine.

---

**CORRECT ANSWER: 3**

[Watch Video Solution On DoubtNut App](#) 

Q-43 - 12979971

Which of the following is not an antiallergic drug?



(A) Promethazine

(B) Chlorpheniramine

(C) iproniazid

(D) Diphenylhydramine

---

CORRECT ANSWER: C

---

SOLUTION:

Anti-allergic drugs are used to treat allergy such as skin rashes. These drugs are also called antihistamines because the allergic reactions are caused due to liberation of histamine in the body i.e histamine cause allergy.

Common drugs of this group are diphenylhydramine.

Chlorpheniramine and promethazine. On the other hand. iproniazide is antidepressant drug.

---

Q-44 - 12662689

Which of the following is an addictive drug?

(A) serotonin

(B) Codeine

(C) Barbituric acid

(D) Sucrose

---

CORRECT ANSWER: B

---

SOLUTION:

Markownikoff's rule application

Q-45 - 12580870

Which of the following is hypnotic drug?

(A) Luminal

(B) Salol

(C) Piperazine

(D) Novalgin

---

CORRECT ANSWER: A

---

SOLUTION:

Luminal is hypnotic drug since it produces sleep.

Watch Video Solution On Doubtnut App 

Q-46 - 19038278

Which of the following statements is not true about the drug  
barbital ?

(A) It is used in sleepin pills

(B) It is a non-hypnotic drug

(C) It is trauquilliser

(D) It causes addiction

---

CORRECT ANSWER: B

---

SOLUTION:

Barbital is a sleep-producing drug , i.e. hypnotic tranquiliser. If causes addiction .

Watch Video Solution On Doubtnut App 

Q-47 - 12979973

Drugs which inhibit the enzymes that catalyse the degradation of noradrenaline are called?

(A) Tranquilizer

(B) antidepressant drugs

(C) antistatic agents

(D) Both (1) and (2)

---

CORRECT ANSWER: D

---

SOLUTION:

Noradrenaline is one of the neurotransmitters that plays a significant role in mood changes. The person suffers from depression if the level of noradrenaline is low. In such situations, antidepressant drugs are required.

These drugs are also called tranquilizers as they induce tranquility in an individual. Iproniazide and phenelzine.

Antistatic agents are compounds which are added to materials (particularly fibres, plastics) to reduce charge

accumulation with resultant hygroscopic salts.

Watch Video Solution On DoubtNut App 

Q-48 - 12979967

Drugs which inhibit the attachment of substrate on active site of enzymes by binding to allosteric site are called

- (A) Enzyme inhibitors
- (B) Noncompetitive inhibitors
- (C) Both (1) and (2)
- (D) Competitive inhibitors

---

CORRECT ANSWER: C

---

SOLUTION:

All the enzymes inhibitors (competitive as well as

noncompetitive inhibitors) inhibit the catalytic activity of the enzyme by inhibiting the attachment of natural substrate on active site of enzymes. However, only non-competitive inhibitor changes the shape of the active site of enzyme after binding at allosteric site.

Watch Video Solution On DoubtNut App 

Q-49 - 12580912

Arsenic drugs are mainly used in the treatment of

(A) jaundice

(B) typhoid

(C) syphilis

(D) cholera

---

CORRECT ANSWER: C

---

SOLUTION:

Arsenic drugs are used in the treatment of syphilis

Watch Video Solution On DoubtNut App 

Q-50 - 12580899

Oral contraceptive drugs contain

- (A) Mestranol
- (B) Norethindrone
- (C) Both (a) and (b)
- (D) None of these

---

CORRECT ANSWER: C

---

SOLUTION:

Oral contraceptive contain both mestranol and



norethindrone.

Watch Video Solution On DoubtNut App 

Q-51 - 12979975

Paracetamol is used as

- (A) an antimalarial
- (B) both analgesic and antipyretic
- (C) an analgesic
- (D) an antipyretic

---

CORRECT ANSWER: B

---

SOLUTION:

Paracetamol (4- acetamidophenol) is a non-narcotic analgesic. It is used to reduce or abolish pain (analgesic)

as well as to reduced fever (antipyretic),

It is one of the most widely used antipyretics.

Aspirin can also act both as an analgesic and antipyretic.



Watch Video Solution On Doubtnut App 

Q-52 - 12979978

Which of the following is an antimicrobial?

(i) Antibacterial drug Itbr. (ii) Anitfungal agent

(iii) Antiviral agent

(iv) Anitparasitic drug

(A) (i),(iii)

(B) (ii),(iii)

(C) (i),(ii),(iii),(iv)

(D) (i),(ii),(iii)

---

CORRECT ANSWER: C

---

SOLUTION:

Drugs which are used to cure caused by microbes or microorganism such as bacteria, viruses, fungi ete, are called antimicrobials.

An anitmicrobial tents to destroy/prevent development or inhibit the pathogenic action of microbes such as

bacteria (antibacterial drugs), fungi (antifungal agents)., virus (antiviral agents), or other parasites (antiparasitic drugs) selectively.

Watch Video Solution On DoubtNut App 

Q-53 - 12979979

Salvarsan, an organic arsemic derivative, used in the treatment of

- (A) cholera
- (B) syphilis
- (C) typhoid
- (D) jaundice

---

**CORRECT ANSWER: B**

---

**SOLUTION:**

Paul Ehrlich (a German bacteriologist) investigated arsenic based structures in order to produce less toxic substance for the treatment of syphilis. He developed the medicine, arsphenamine, known as salvarsan. It was the first effective treatment discovered for syphilis.

Watch Video Solution On DoubtNut App 

Q-54 - 19124534

The antibiotic used for the treatment of typhoid is :

- (A) penicillin
- (B) chloramphenicol
- (C) terramycin
- (D) sulphadiazine

---

CORRECT ANSWER: B

---

Q-55 - 12580836

The drug used for the treatment of throat infection is

- (A) quinine
- (B) piperazine
- (C) sulpha drug like sulphamylamide
- (D) isonictin hydrazide

---

CORRECT ANSWER: C

---

SOLUTION:

Sulpha drug is used for the treatment of throat infection.

Q-56 - 12979980

The first effective antibacterial agent prepared was

(A) prontosil

(B) alizarin

(C) phenolphthalein

(D) methyl orange

---

CORRECT ANSWER: A

---

SOLUTION:

The bright red dye that became the first sulphonamide drug to treat bacterial infection was prontosil. It resembles in structure to the compound, salvarsan. It must be noted that in the body prontosil is converted to a compound called sulphaniamide, which is the real active compound.

---

Q-57 - 12979981

Sulpha drugs used as antibiotics are derivatives of

- (A) suophanilic acid
- (B) salicylic acid
- (C) Sulphanilamide
- (D) benzene sulphonamide

---

CORRECT ANSWER: C

---

SOLUTION:

All the sulpha drugs are derived from sulphnialimide :

Sulphayridine is used for the treatment of pneumonia while sulphaguanidine is used in the treatment of bacillary dysentery.





Watch Video Solution On Doubtnut App 

Q-58 - 12003377

Sulphanilic acid is a/an:

(A) Arrhenius acid

(B) Lewis base

(C) neither (a) nor (b)

(D) either (a) or (b)

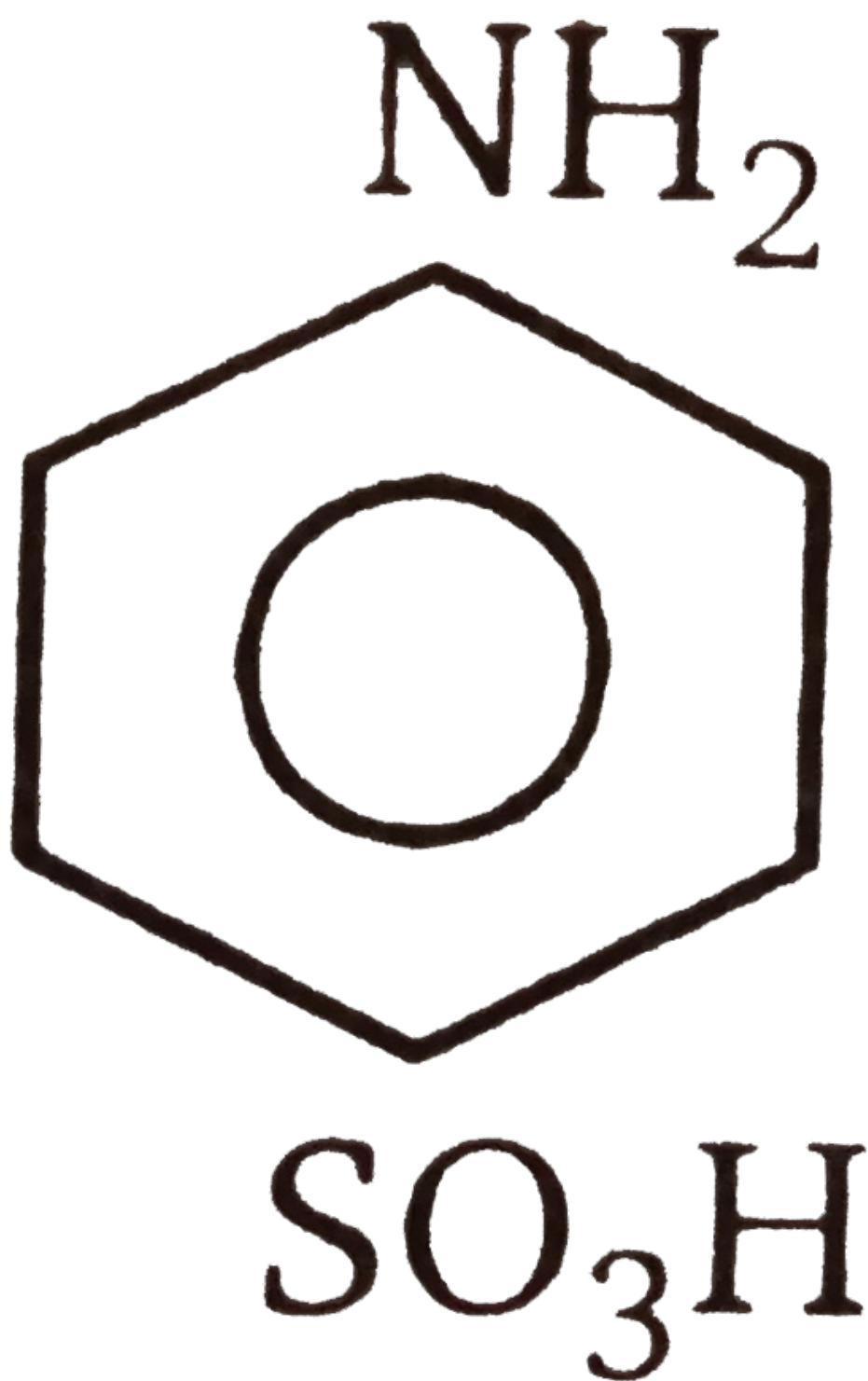
---

CORRECT ANSWER: D

---

SOLUTION:

Sulphanilic acid has basic as well as acidic gp.in



it.

---

Q-59 - 19124566

Tranquillizers are drugs that reduce emotional instability, tension, fear, anxiety and induce sleep. They are also used in relieving stress, anxiety and irritability-Barbituric acid and its derivatives, known as barbiturates (veronal, amytal, nembutal, luminal) serve as good tranquillizers. Other tranquillizers which are not barbituric acid derivatives are chlordi-azepoxide, equanilmeprobamate, valium (diazepam), etc. Opium alkaloids such as morphine and codeine are powerful analgesics (reduce pain). Morphine is a very potent narcotic analgesic that is known to act on the central nervous system. Antimicrobials are substances that either kill microbes (microbiocidal) or prevent their growth (microbiostatic). These may be either sulpha drugs such as sulphapyridine, sulphadiazine, sulphaguanidine or antibiotics such as erythromycin, tetracycline,

chloramphenicol which inhibit or arrest the growth of microbes.

Which of the following are non-narcotic analgesics?

(A) Aspirin

(B) Acetaminophen

(C) Naproxen

(D) All of these

---

CORRECT ANSWER: D

Watch Video Solution On Doubtnut App 

Q-60 - 12979985

Which of the following is used as a "morning after pill" in many countries

(A) Mifepristone

(B) Ethyhyalestradiol

(C) Norethindrone

(D) Both (2) and (3)

---

CORRECT ANSWER: A

---

SOLUTION:

Mifepristone is a synthetic steroid that blocks the effects of progesterone and is used as a "morning after pill" in many countries.

Some of the commonly used pills contains a combination of northinfrone and ethylestradiol.

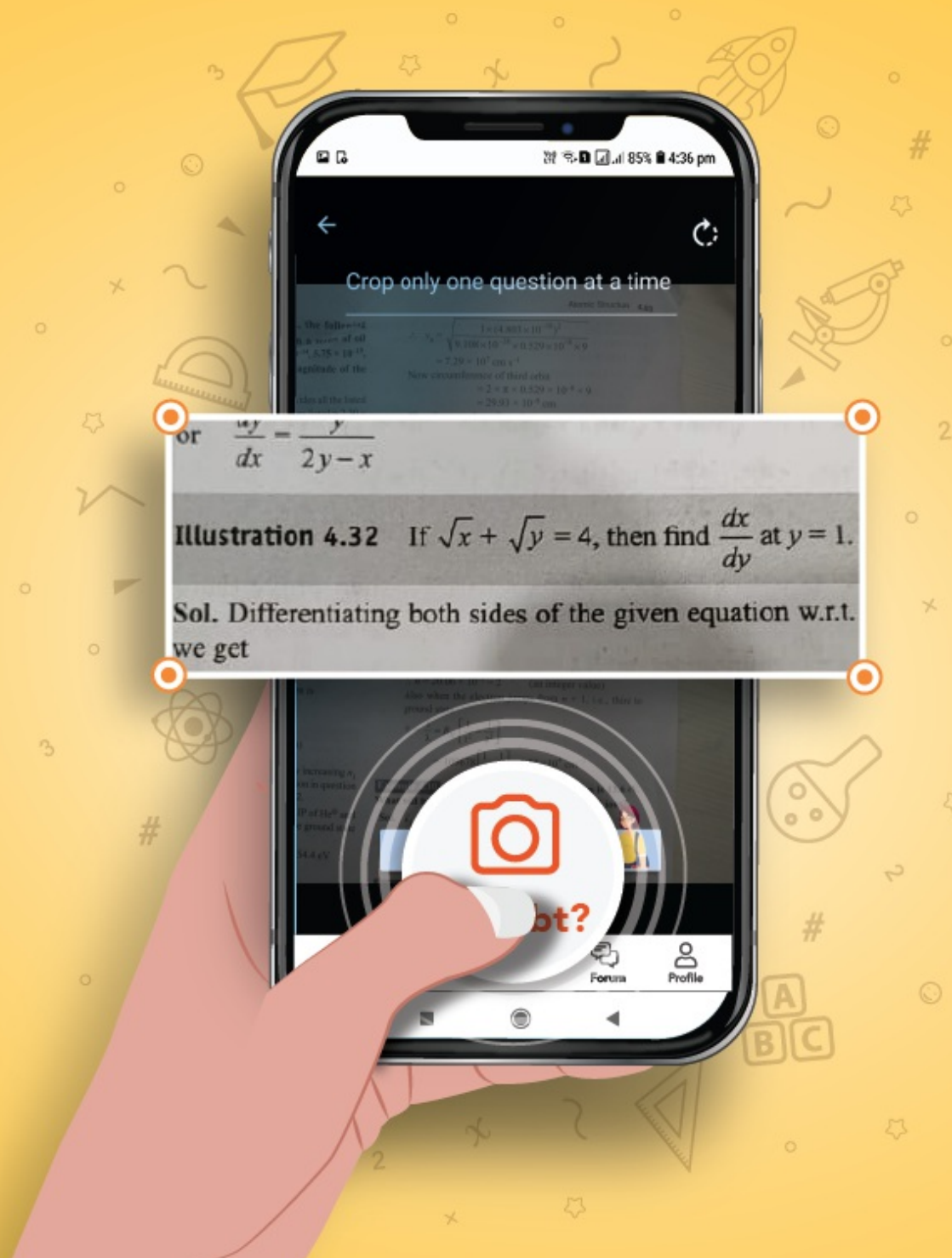
Watch Video Solution On Doubtnut App 

# Apne doubts ka Instant video solution paayein

Abhi Doubtnut try karein!



Whatsapp your doubts on  
 **8400400400**



 doubtnut